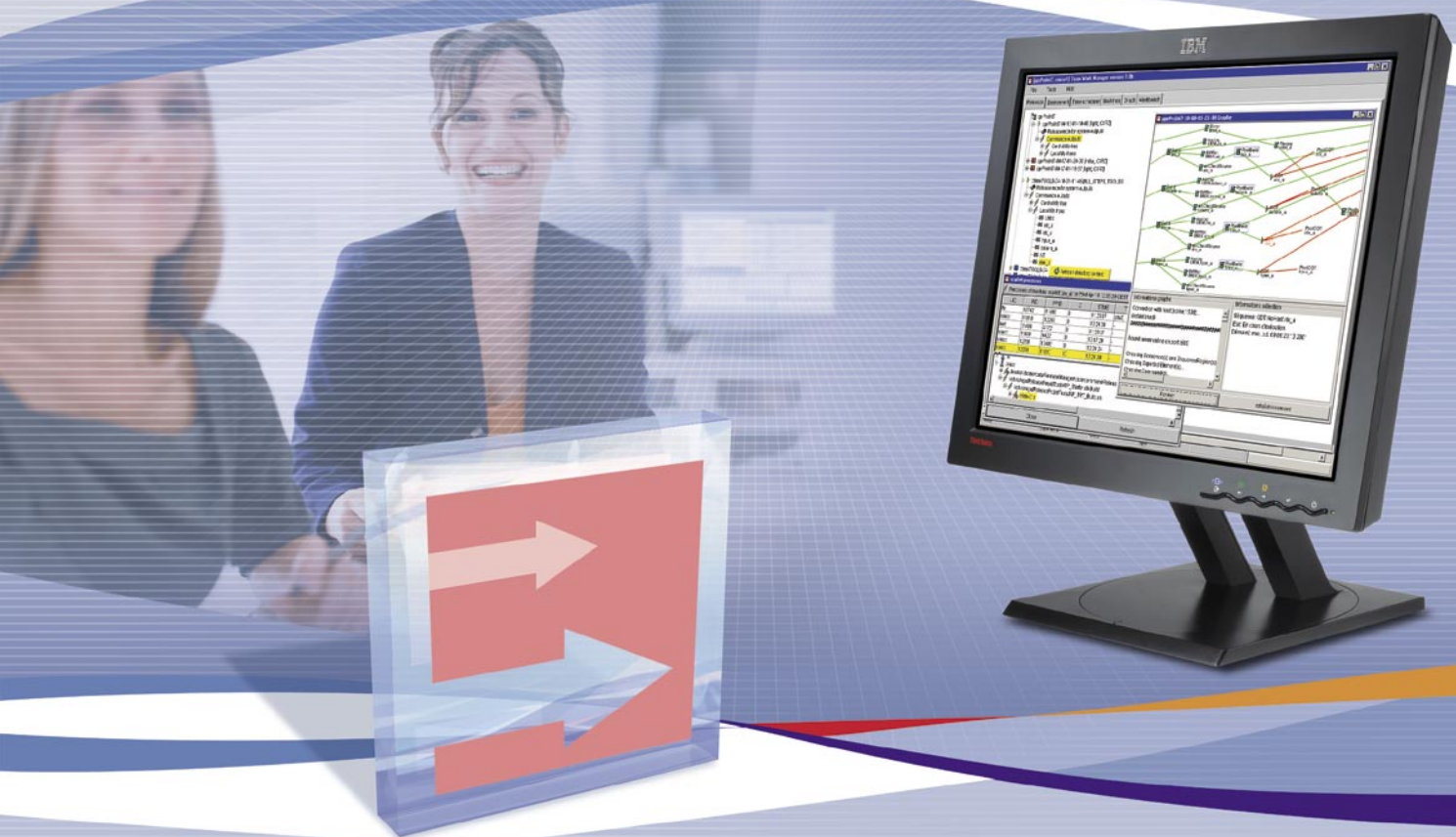


CAA Rade solutions



CAA Rade solutions

CAA V5 provides the most complete set of tools, guides and API's to support the application development process from the very start of the requirement specification to the final product packaging.

As CATIA Version 5 and ENOVIA Version 5 Solutions, CAA Version 5 is positioned as a leading 'process centric' system for developing CAD/CAM/CAE/PDMII applications.

CAA V5 includes design modeling, development coding, build, quality test, source code and configuration control and release management. The tools are available for Java™ and C++ and are operating with CATIA and ENOVIA V5 on both UNIX® and Windows® platform.

CAA V5 is not only the CAA V5 – C++/Java programming offering but does also include CAA V5 – CATIA VB Automation that represents the first level of openness within CATIA V5. This first level is provided with CATIA Version 5 and has been part of it since its first release.

Moreover, CAA V5 is within the scope of the V5 architecture native openness level and usage. In this respect CAA V5 is not the only way to fill the gap between off-the-shelf V5 product and customer processes.

V5 architecture offers multiple alternatives ranging from productivity tools to capability tools.



Products

CAA – Data Model Customizer (DMC)

CAA – Data Model Customizer (DMC) provides design-modeling tools for customising or extending modeling objects in both CATIA V5 and ENOVIA V5 LCA. Using the same interface, developers can create and extend objects from different ENOVIA and CATIA modelers, operating in a standard and productive graphical environment thanks to best-in-class UML industry standard design modeling tool.

As a result, C++ developers can easily embed company knowledge into CATIA V5 and ENOVIA V5 LCA.

It also provides to business analyst and software architects the ability to create and modify Business Object description used to federate data from multiple applications and databases with the same technique as those provided for designing V5 modeling objects.

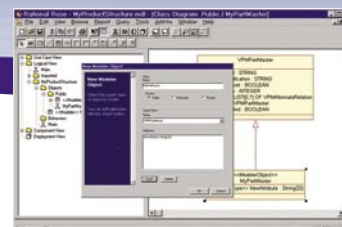
CAA – Data Model Customizer (DMC) capabilities and commands access are provided through CAA – C++ Interactive Dashboard (CID) product or directly from Rational Rose.

This product relies upon Rational Rose product from Rational Software Corporation, which must be purchased separately.

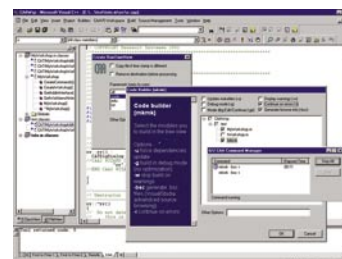
CAA – Multi-Workspace

Application Builder (MAB)

CAA – Multi-Workspace Application Builder (MAB) delivers a consistent and integrated environment in which to compile, link-edit and build a V5 application, using the same methods and tools that Dassault Systemes uses to create its V5 products. Industry standard compilers and linkers for languages such as C, C++ and Java are used with consistent processes and methods, which are independent of the target platform. With its ability to handle multiple workspace compilation, link and run time creation, it provides the most efficient way to manage dependencies between separate workspaces.



CAA – Data Model Customizer (DMC)



CAA – Multi-Workspace Application Builder (MAB)

Products

CAA – C++ Interactive Dashboard (CID)

CAA – C++ Interactive Dashboard (CID) is a Rapid Application Development Environment (RADE) on Windows platform for building C++ applications. It provides a single point access to the C++ development tools that support the full development cycle, from design and development through test, deployment and maintenance. Its tight integration with Microsoft Visual Studio C++ or Microsoft Visual .NET C++ makes it easy to learn and master. While operating on Windows platform, CAA – C++ Interactive Dashboard Product allows automatic code building for UNIX platforms.

Providing the same robust development methodology used by Dassault Systemes, the software development community can take advantage of years of expertise in design, development, test and release which goes into every CATIA and ENOVIA product.

CAA – C++ Interactive Dashboard (CID) e.g. allows the customisation of C++ components provided by the ENOVIA APIs deliveries. This makes it possible to customise the ENOVIA V5 application server.

CAA – C++ Unit Test Manager (CUT)

CAA – C++ Unit Test Manager (CUT) enables users to check C++ development compliance with design scenarios and to ensure regression-free modifications, scenarios pertinence, including numerous feature such as debug/non debug replay, replay environment concatenation, etc.

CAA – C++Unit Test Manager (CUT) capabilities and commands access are embedded within the integrated CAA – C++ Interactive Dashboard (CID) product.

On Windows platforms – working with the Rational Purify product from Rational Software Corporation – it also enables memory management test replay to help finding memory leaks and to ensure leak-free code and avoid run time errors. With the Rational PureCoverage product from Rational Software Corporation it facilitates coverage tests ensuring that the whole code is tested during automatic test replays.

The products from Rational Software Corporation must be purchased separately.

CAA – C++ Source Checker (CSC)

CAA – C++ Source Checker (CSC) contributes to enhance the global quality objective of CAA V5 applications. Operating at the source stage in the application development cycle, early checking against C++ coding rules will ensure better stability and reduce defects. As for the other RADE products, it operates on both Windows and UNIX platforms with the same characteristics.

CAA – C++Source Code Checker (CSC) capabilities and commands access are embedded within the integrated CAA – C++ Interactive Dashboard (CID) product

CAA – Java Interactive Dashboard (JID)

CAA – Java Interactive Dashboard (JID) provides a Rapid Application Development Environment (RADE) for customising ENOVIA 3d com product on Windows and UNIX. Running under Windows, CAA – Java Interactive Dashboard (JID) together with CAA – Multi-Workspace Application Builder (MAB), CAA – Java Unit Test Manager (JUT) and CAA – Source Code Manager (SCM), provides a high technology environment to support large scale Java application development with a high degree of security and industrial robustness.

CAA – Java Interactive Dashboard (JID) extends IBM Websphere Studio Application Developer product for ENOVIA 3D COM. It makes it easier to learn and faster to master, thus reducing drastically the learning curve. It also provides a single access to the RADE products for Java development delivered within Component Application Architecture (CAA).

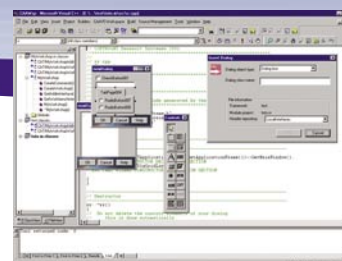
CAA – Java Unit Test Manager (JUT)

CAA – Java Unit Test Manager (JUT) enables users to check Java development compliance with design scenarios and to ensure regression-free modifications, scenarios pertinence, including replay environment concatenation for different Java Virtual Machine, automatic result comparisons, timeout and structure file results for WEB publication.

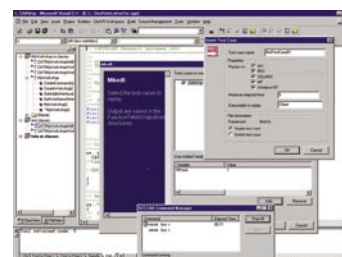
CAA – Java Unit Test Manager (JUT) capabilities and commands access are embedded within the integrated CAA – Java Interactive Dashboard (JID) product.

CAA – Source Code Manager (SCM)

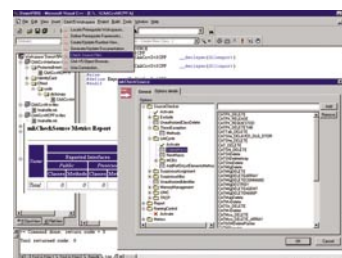
CAA – Source Code Manager (SCM) provides a software version and configuration management tool to support CAA V5 application development. Information Technology departments and software companies are provided with organisational and control tools to facilitate the management of coding source for team development on Windows and UNIX through a permanent, secure data repository for source components based on state-of-art Database technology (Oracle or DB2).



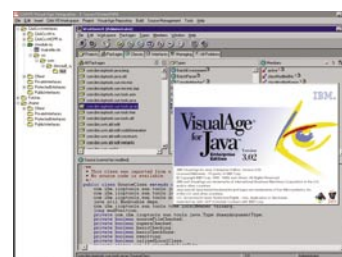
CAA C++ Interactive Dashboard (CID)



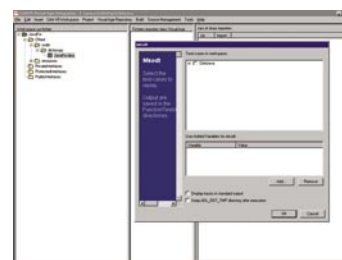
CAA C++ Unit Test Manager (CUT)



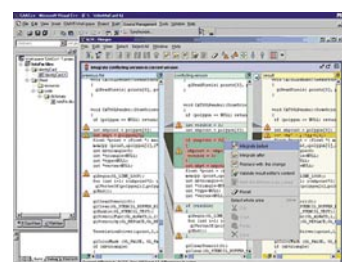
CAA C++ Source Checker (CSC)



CAA Java Interactive Dashboard (JID)



CAA Java Unit Test Manager (JUT)



CAA Source Code Manager (SCM)

Products

CAA – Teamwork Release Manager (TRM)

CAA – Teamwork Release Manager (TRM) provides the management of the release task of complex software. It delivers a client workbench where IT and QA people can automate and schedule the different tasks belonging to their project release. These tasks span the compiling, link editing, replaying code scenario and controlling quality activities. UNIX and Windows releases are performed from the same workbench. CAA – Teamwork Release Manager (TRM) incorporates a visual tool that displays the release graph associated with these tasks.

CAA – Teamwork Release Manager (TRM) can launch tasks at the same time and distribute them across the network, thus improving dramatically the overall time spent to build the release. Beyond the system infrastructure provided, CAA – Teamwork Release Manager (TRM) gives the ability to IT and QA organisations to greatly optimise the life cycle of a release.

CAA – C++ API Documentation Generator (CDG)

CAA – C++ API Documentation Generator provides a single command that can be integrated to the release process driven by CAA – Teamwork Release Manager product for generating the C++ API reference documentation. The result is a set of HTML files directly integrated in the V5 project development tree and composed of the framework list, interfaces and classes list leading to the documentation page.

The generated documentation is in the same format as the CAA V5 API documentation.

CAA – Interactive Test Capture (ITC)

CAA – Interactive Test Capture (ITC) provides unique capabilities for recording and replaying test scenarios in a WINtop environment (CATIA, DELMIA and ENOVIA DMU).

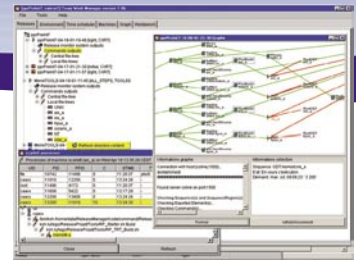
Record operations are done interactively within the usual V5 frame, thus, improving usability and decreasing time for testing the CAA application.

Any scenario recorded on Windows can be replayed on UNIX and vice versa.

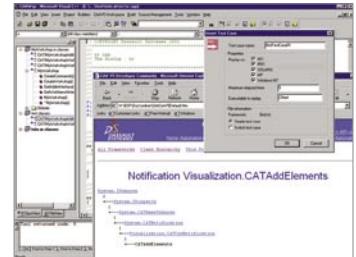
CAA – Web Application Composer (WAC)

CAA – Web Application Composer (WAC) introduces a new set of interactive tools that enable business analyst to quickly build user interfaces for composite e-application that involve multiple disparate information resources. It provides the capabilities to create the presentation layout as well as the business logic hidden behind it.

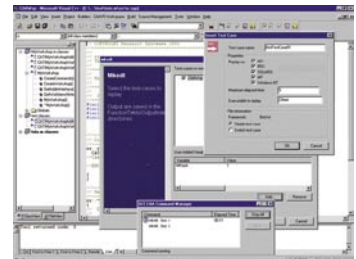
CAA – Web Application Composer (WAC) is relying upon IBM Websphere Studio Application Developer (WSAD) middleware, thus, providing to the users a standard development platform. User benefits from many advantages that include direct widgets drag and drop on the page layout, interactive construction of the business logic, instant testing of the result page, etc.



CAA – Teamwork Release Manager (TRM)



CAA – C++ API Documentation Generator (CDG)



CAA – Interface Test Capture (ITC)



CAA – Web Application Composer (WAC)



For more information contact your IBM Marketing Representative, IBM Business Partner, or call one of the numbers below:

AMERICAS

USA	Toll-free 1 800 395 3339
Canada	(514) 938 6718
Argentina	(54) 11 4319 6594
Brazil	(55) 11 3050 5542
Mexico	(1) (52) 5 270 64 25

ASIA / PACIFIC

Australia	02 9842 9555
China	86 10 6539 1188 ext. 4774
Hong Kong	2825 7614
India	91 20 649724 / 649621
Indonesia	021 5238622
Japan	3 3808 8510
Korea	822 3781 7583
Malaysia	(603) 7720 2069
New Zealand	+64 9 359 8785
Philippines	2 819 2345
Singapore	65 320 1234
Taiwan	02 725 9493
Thailand	2 273 4406

EUROPE / MIDDLE EAST / AFRICA

Austria	1 211 45 2273
Belgium	2 225 2901
CEMA	+42 12 4954 1225
Czech Republic	420 272 131 742
Denmark	45 233000
Egypt	539 2539
Finland	(0) 9 459 4151
France	01 49 05 70 64
Germany	01 805 426 756
Greece	1 688 14 76
Hungary	36 1 382 5503
Israel	(972) 3 697 8586
Italy	800 753 196
Netherlands	020 513 3769
Norway	66 99 9361
Poland	48 22 8786969
Portugal	21 7915005
Romania	40 21 224 1372
Russia	7 095 9402000
Slovakia	421 2 4954 1455
Slovenia/Croatia/ Serbia/Bosnia and Hercegovina	386 1 479 6676
South Africa	0860 788 788
Spain	(34) 91 397 66 11
Sweden	8 763 4394
Switzerland	+41 58 333 5370
Turkey	0212 317 1305
United Kingdom	0870 010 2510

IBM Eurocoordination

Product Lifecycle Management
Tour Descartes
La Defense 5
2, avenue Gambetta
92066 Paris La Defense Cedex
France

The IBM home page can be found at ibm.com

IBM, the IBM logo, ibm.com and the On Demand Business logo are registered trademarks of International Business Machines Corporation in the United States, other countries, or both.

CATIA® and ENOVIA® are registered trademarks of Dassault Systèmes.

Microsoft and Windows are trademarks of Microsoft Corporation in the United States, other countries, or both.

Java is a trademark of Sun Microsystems, Inc. in the United States, other countries, or both.

UNIX is a registered trademark of The Open Group in the United States and other countries.

Other company, product and service names may be trademarks, or service marks of others.

References in this publication to IBM products, programs or services do not imply that IBM intends to make these available in all countries in which IBM operates. Any reference to an IBM product, program or service is not intended to imply that only IBM products, programs or services may be used. Any functionally equivalent product, program or service may be used instead.

IBM hardware products are manufactured from new parts, or new and used parts. In some cases, the hardware product may not be new and may have been previously installed. Regardless, IBM warranty terms apply.

This publication is for general guidance only. Information is subject to change without notice. Please contact your local IBM sales office or reseller for latest information on IBM products and services.

Photographs may show design models.

© Copyright IBM Corporation 2005.
All Rights Reserved.

ibm.com/solutions/plm