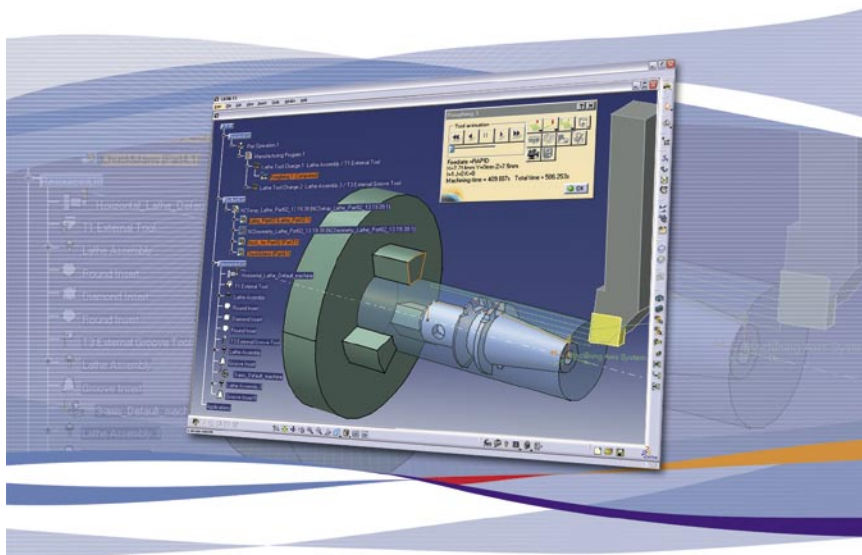


Grow with PLM Manufacturing Profile Pack

Part of IBM's express portfolio of offerings for medium-sized businesses



Focus Industries

- **Tooling**
- **Industrial Products**
- **Electrical and Electronics**
- **Consumer Goods**

Few manufacturing companies have not been impacted by the trend toward increasing globalisation. Competition from developing countries in South America, Asia and Eastern Europe is very aggressive on price and quality. More and more manufacturing projects are now outsourced to these countries.

Moreover, most of your customers are looking for collaboration capabilities that will help them deliver the right product on time. Your ability to react

quickly to your customers' changing requirements has become a mandate to stay ahead of the competition.

The Manufacturing Profile Pack, built with CATIA V5 applications, delivers unique and powerful capabilities to help manufacturers reduce costs and improve profitability. It offers the most complete, end-to-end Product Lifecycle Management (PLM) NC machining tools – helping you to deliver parts faster, and optimally re-use your company assets within a fully collaborative environment. It includes capabilities to create NC programmes for a diverse set of machining requirements: everything from 2.5 axis milling and drilling operations, to prismatic machining, 3-axis surface machining, and lathe operations using 2-axis turning and drilling.

The Manufacturing Profile Pack helps you to:

- *Provide complete coverage of your end-to-end machining process – from process planning and NC programming to NC simulation and post processing – within a single integrated solution set.*
- *Support the manufacturing of prototypes, tooling and parts.*
- *Become productive quickly because it is easy to use, allowing your organisation to quickly become compliant with industry practices and machining techniques for milling, drilling and turning.*
- *Optimise collaboration and concurrent engineering between product engineering, manufacturing departments and suppliers by maintaining associativity between product data, manufacturing processes and resources.*
- *Provide a high level of automation and standardisation by capturing and reusing engineering intent and your company's proven machining know-how and best practices.*

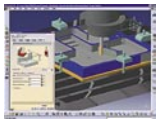
Manufacturing Products

These are the products available to be included in the Manufacturing Profile Pack. Optionally, additional profile packs can be ordered for any users who may perform a broader role in the organisation or individual products can be added from the standard PLM software catalogue as long as all pre-requisite products are also included in the order.



CATIA – NC Review (NCG)*^M

Access, visualise, and browse 3D NC Manufacturing data from CATIA V5 and previous versions.



CATIA – Prismatic Machining (PMG)

Easily define NC programs dedicated to machining tooling, prototypes and parts using advanced 2.5-axis milling and drilling operations. It also provides high-level automation and knowledge re-use capabilities.



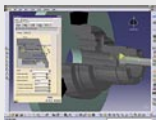
CATIA – Prismatic Machining Preparation Assistant (MPA)

Automatically create machining features for prismatic machining using advanced feature recognition techniques.



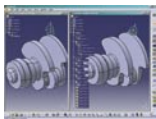
CATIA – 3 Axis Surface Machining (SMG)

Easily define NC programs dedicated to machining tooling, prototypes and parts using 3-axis surface machining operations.



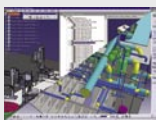
CATIA – Lathe Machining (LMG)

Easily define NC programs dedicated to machining cylindrical parts on a lathe using 2-axis turning and drilling operations. It also provides high-level automation and knowledge reuse capabilities.



CATIA – Part Design Feature Recognition (FR1)

Recognise and manipulate feature history like holes, pads, and fillets, within an isolated boundary representation, to retrieve a comprehensive tree structure of a selected area in a CATIA part.



CATIA – COM 1 to 2 Extension (C12)

Give access to CATIA P2 products on a CATIA P1 configuration for broad scalability and wider business process coverage.

** Requires CATIA – COM 1 to 2 Extension (C12)*

^M Mandatory, must be included in this profile pack



IBM Eurocoordination

Product Lifecycle Management
Tour Descartes
La Defense 5
2, avenue Gambetta
92066 Paris La Defense Cedex
France

The IBM home page can be found at ibm.com

IBM, the IBM logo and the On Demand Business logo are registered trademarks of International Business Machines Corporation in the United States, other countries, or both.

CATIA® is a registered trademark of Dassault Systèmes.

SMARTEAM® is a registered trademark of SmarTeam Corporation Ltd.

Other company, product and service names may be trademarks, or service marks of others.

Any reference to an IBM product, program or service is not intended to imply that only IBM products, programs or services may be used. Any functionally equivalent product, program or service may be used instead.

This publication is for general guidance only. Information is subject to change without notice. Please contact your local IBM sales office or reseller for latest information on IBM products and services.

IBM does not represent or warrant that its products or services ensure compliance with laws. Clients are responsible for compliance with applicable securities laws and regulations, including national laws and regulations.

Photographs may show design models.

© Copyright IBM Corporation 2005
All Rights Reserved.