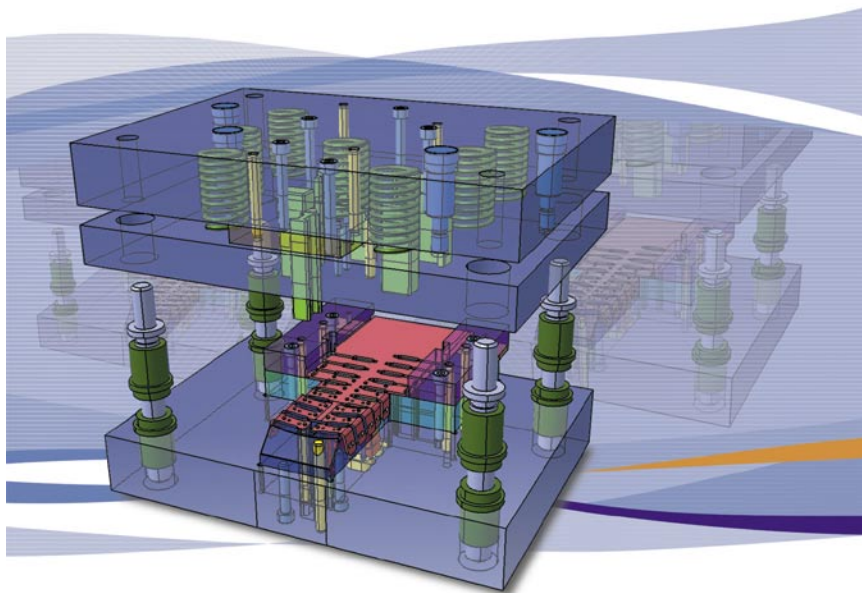


Grow with PLM

Die & Progressive Die Design Profile Pack

Part of IBM's express portfolio of offerings for medium-sized businesses



Focus Industries

- **Tooling**
- **Industrial products**
- **Consumer goods**
- **Electrical and Electronics**

As a tool maker you are impacted by ever growing competition that has been created by globalisation.

This increased competitive pressure forces you to lower prices and offer extra services. You also have to contend with delayed payment terms from your customers who will want to put the tool through their own internal quality assurance process once the tool is built and before you get paid.

Moreover, you have to cope with poor quality data as input and must deliver quotations rapidly. Once the project is started, you will often have to adapt to several geometry modifications on the part your tool is to produce. Your ability to react to these constant changes quickly and efficiently is more than ever a way to stay ahead of the competition.

The Die & Progressive Die Design Profile Pack helps you to address these challenges. It includes a rich suite of CATIA V5 applications specifically suited to the needs of your tooling designers including catalogues of standard tooling components, specialised sheetmetal processing and advanced styling capabilities.

The Die & Progressive Die Design Profile Pack offers the most complete end-to-end Product Lifecycle Management (PLM) solution to help you deliver tools faster, making an optimal re-use of your company assets within a fully collaborative environment.

The Die & Progressive Die Design Profile Pack helps you to:

- *Dramatically reduce design and manufacturing costs through the capture and re-use of company know-how and standard components. Limiting the number of customised parts and automating the non-value added tasks facilitates cost reduction.*
- *Cover the entire tooling design and manufacturing process allowing the die and the component design to be delivered at the same time thanks to a common V5 architecture and integrated applications.*
- *Embed and re-use your company rules and know-how and share best practices throughout your company.*
- *Propagate design changes easily throughout your process since part design features are automatically associated with the manufacturing processes and resources required.*
- *Be flexible and design both simple or complex tools thanks to the easy-to-use interface and strong capabilities.*

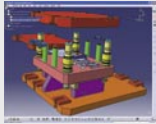
Die & Progressive Die Design Products

These are the products available to be included in the Die & Progressive Die Design Profile Pack. Optionally, additional Profile Packs can be ordered for any users who may perform a broader role in the organisation or individual products can be added from the standard PLM software catalogue as long as all pre-requisite products are also included in the order.



IBM Eurocoordination

Product Lifecycle Management
Tour Descartes
La Defense 5
2, avenue Gambetta
92066 Paris La Defense Cedex
France



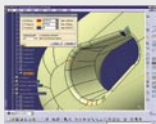
CATIA – Tooling Design (TG1)

Deliver to tooling designers an ideal set of generic tooling design applications including rich content libraries and catalogues of standard components.



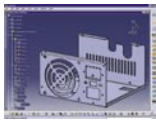
CATIA – Freestyle Shaper (FS1)

Help designers create styled shapes and surfaces while ensuring the manufacturability of a plastic part by digitally simulating whether or not the part can be easily removed from the mold.



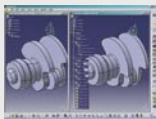
CATIA – Healing Assistant (HA1)

Check the validity of imported geometry against CATIA V5 modelling criteria and improve the topology and geometry of analysed objects.



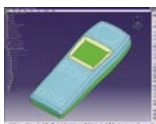
CATIA – Sheetmetal Design (SM1)

Design sheet metal parts in an intuitive and productive environment.



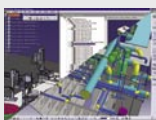
CATIA – Part Design Feature Recognition (FR1)

Recognise and manipulate feature history like holes, pads, fillets, etc., within an isolated boundary representation, to retrieve a comprehensive tree structure of a selected area in a CATIA part.



CATIA – Generative Shape Design (GS1)

Create in-context, specification-driven shapes based on a combination of wireframes and extensive multiple surface features.



CATIA – COM 1 to 2 Extension (C12)

Give access to CATIA P2 products from a CATIA P1 configuration for broad scalability and wider business process coverage.

The IBM home page can be found at ibm.com

IBM, the IBM logo and the On Demand Business logo are registered trademarks of International Business Machines Corporation in the United States, other countries, or both.

CATIA® is a registered trademark of Dassault Systèmes.

SMARTEAM® is a registered trademark of SmarTeam Corporation Ltd.

Other company, product and service names may be trademarks, or service marks of others.

Any reference to an IBM product, program or service is not intended to imply that only IBM products, programs or services may be used. Any functionally equivalent product, program or service may be used instead.

This publication is for general guidance only. Information is subject to change without notice. Please contact your local IBM sales office or reseller for latest information on IBM products and services.

IBM does not represent or warrant that its products or services ensure compliance with laws. Clients are responsible for compliance with applicable securities laws and regulations, including national laws and regulations.

Photographs may show design models.

© Copyright IBM Corporation 2005
All Rights Reserved.