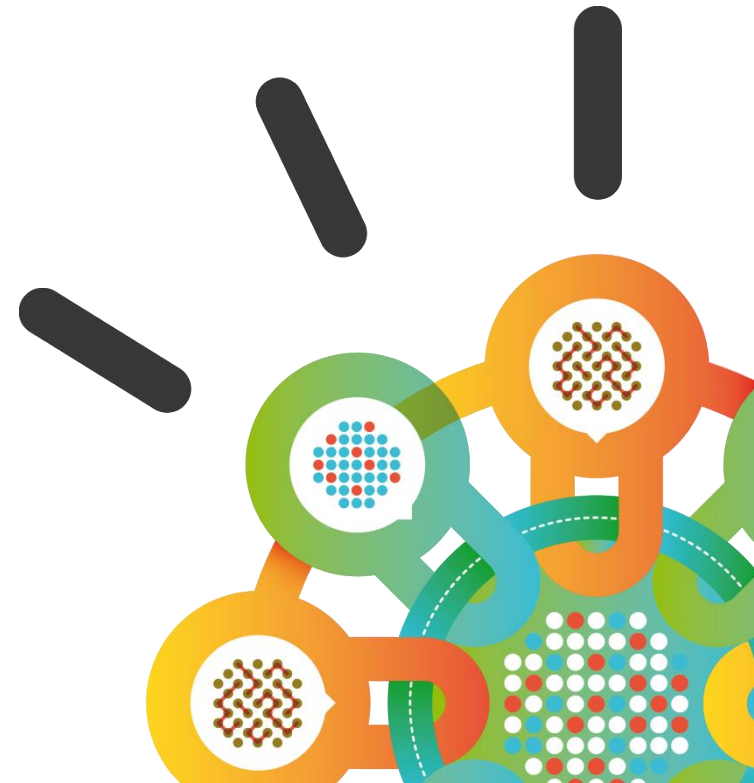


Security Intelligence.  
Think Integrated.

## IBM Cybersecurity: Before, During & After the Attack..

*Powered by IBM X-Force*

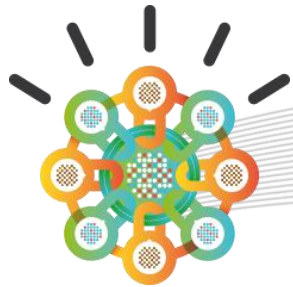
- **October 8** – Chicago
- **October 9** – Philadelphia
- **October 23** – Miami
- **November 12** – Boston
- **November 20** – Seattle



# AGENDA

- IBM Security Strategy
- IBM X-Force on the Threat Landscape – Long Term Impacts of Heartbleed
- Keynote: Security in the Spotlight – Use it to your Advantage
- Disrupt the Lifecycle of Lifecycle of Advanced Threats
- Under the Hood – The Nuts and Bolts of the Dynamic Attack Chain
- QRadar Incident Forensics Workshop

# IBM Security invests in best-of-breed technologies

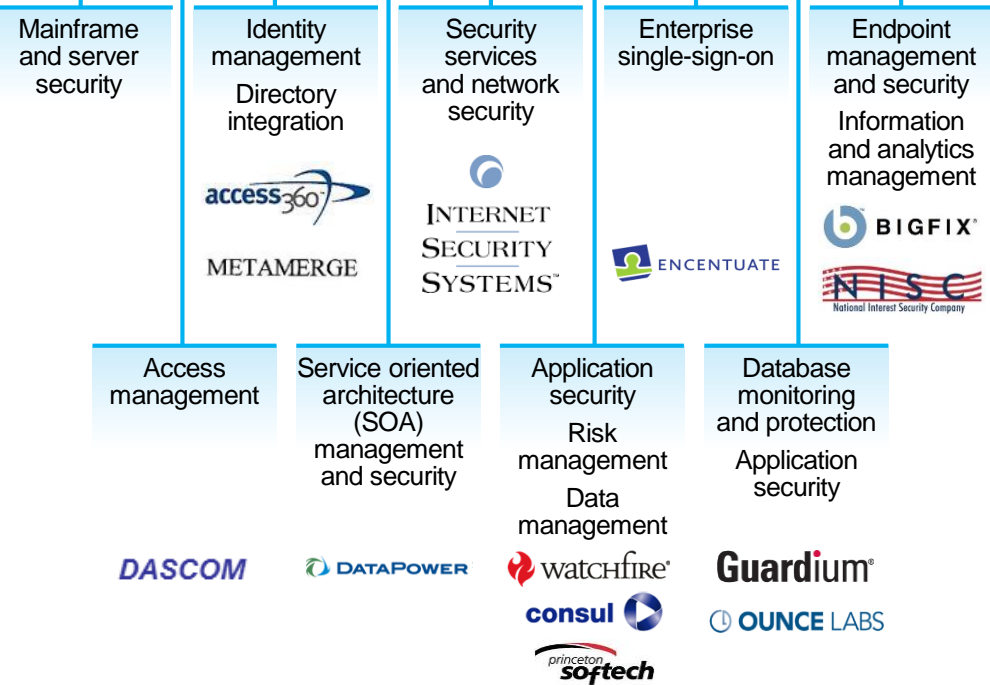


**1 Labs**  
Security intelligence

**IBM Security is created**

**Trusteer**  
**MaaS360**  
by Fiberlink  
Advanced fraud protection  
Mobile security and management

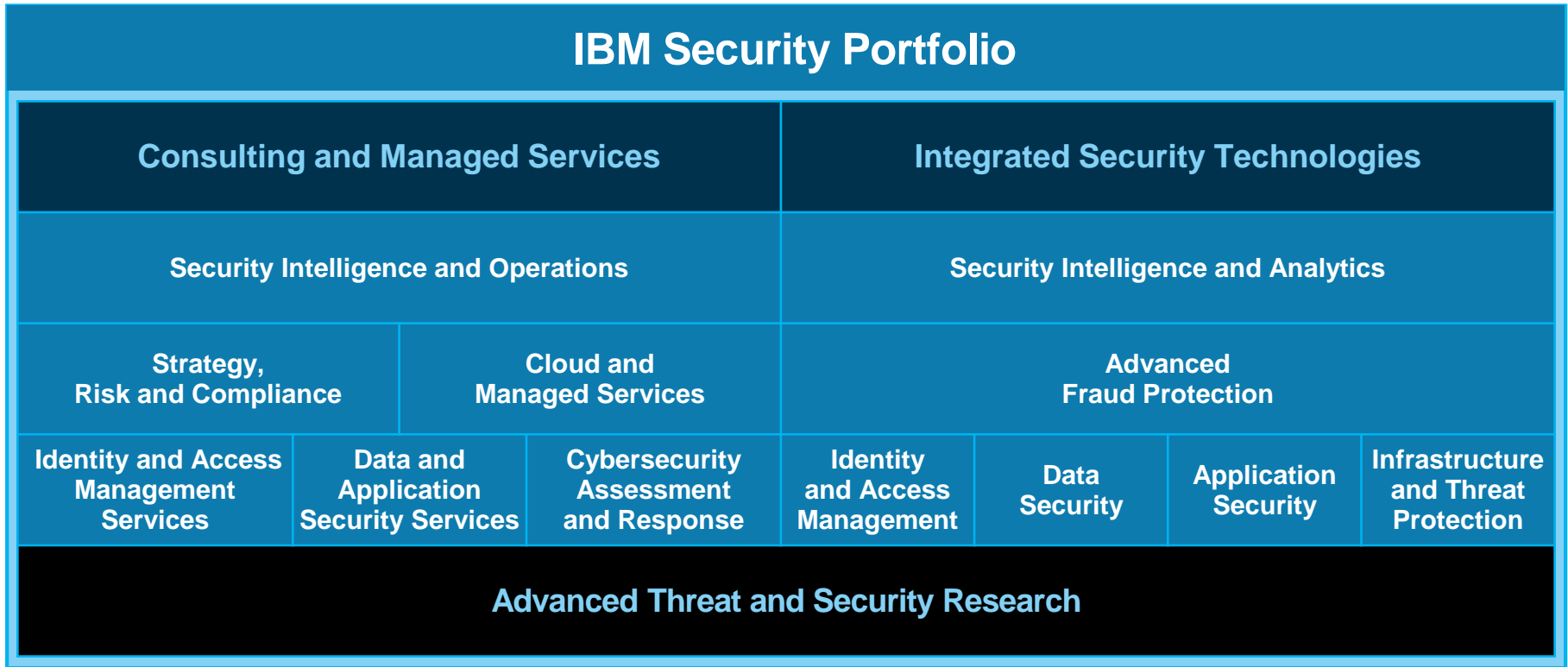
**LIGHTHOUSE SECURITY GROUP**  
**CrossIdeas**  
Cloud-enabled identity management  
Identity governance



### IBM Security Investment

- 6,000+ IBM Security experts worldwide
- 1,700+ IBM Security patents
- 4,000+ IBM Managed Security Services clients worldwide
- 25 IBM Security labs worldwide

# IBM has the world's broadest and deepest security portfolio



## Key Security Trends



**Advanced Threats**



**Cloud Adoption**



**Mobile Concerns**



**Compliance Mandates**



**Skills Shortage**

# IBM helps protect against new, complex security challenges



**TOP 3** enterprise security software vendor in total revenue

**13** industry analyst reports rank IBM Security as a **LEADER**

**133** countries where IBM delivers managed security services

**10K+** clients protected *including...*

**24** of the top 33 banks in Japan, North America, and Australia

## IBM helps clients...

- 1 Optimize the security program**  
*Integrate security silos, reduce complexity, and lower costs*
- 2 Stop advanced threats**  
*Use analytics and insights for smarter integrated defense*
- 3 Protect critical assets**  
*Use context-aware and role-based controls to help prevent unauthorized access*
- 4 Safeguard cloud and mobile**  
*Employ cloud and mobile initiatives to build a new, stronger security posture*