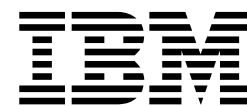




Configuring IBM MobileFirst Protect for Apple DEP

Version 2 Release 4



Configuring IBM MobileFirst Protect for Apple DEP

Version 2 Release 4

Note

Before using this information and the product it supports, read the information in "Notices" on page 11.

This edition applies to version 2, release 4, modification level 0 of IBM MobileFirst Protect (program number 5725-R11) and to all subsequent releases and modifications until otherwise indicated in new editions.

© **Copyright IBM Corporation 2014, 2016.**

US Government Users Restricted Rights – Use, duplication or disclosure restricted by GSA ADP Schedule Contract with IBM Corp.

Contents

Chapter 1. About Apple DEP Settings . . . 1	Terms and conditions for product documentation. . . 13
Chapter 2. Configuring the DEP options with the IBM MobileFirst Protect On-Premise Portal 3	
Chapter 3. Downloading an MDM token from the Apple DEP Portal. 5	
Chapter 4. Uploading the token to the IBM MobileFirst Protect On-Premise Portal. 7	
Notices 11	
Trademarks 13	

Chapter 1. About Apple DEP Settings

Both IBM® MaaS360® SaaS and On-Premise offerings fully support DEP.

The Apple Device Enrollment Program (DEP) provides a fast, streamlined way to deploy your corporate-owned Mac or iOS devices, whether purchased directly from Apple or through participating Apple Authorized Resellers.

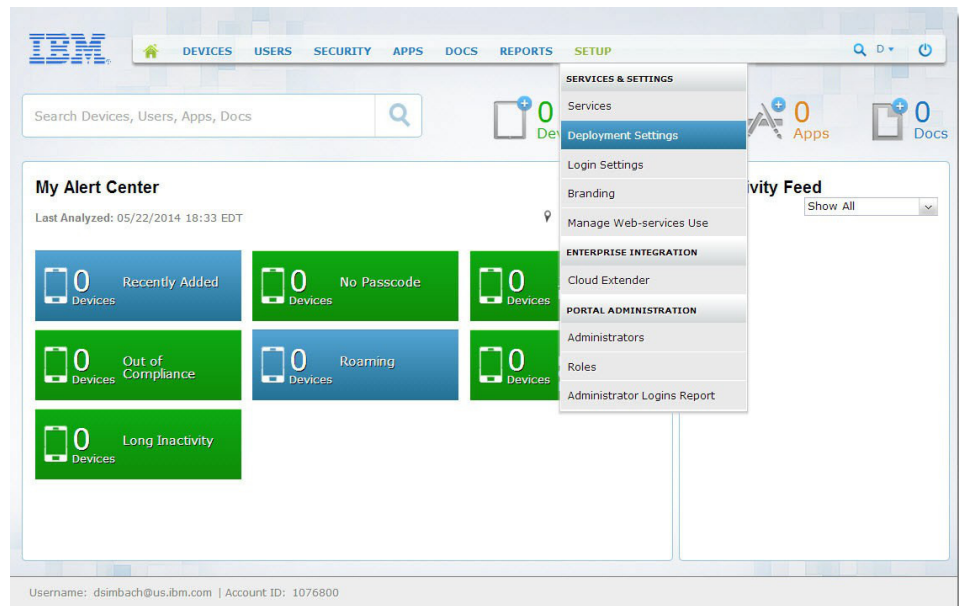
For more information about Apple's DEP, visit <https://www.apple.com/business/dep/>.

To log in to Apple's DEP portal, visit <https://deploy.apple.com>.

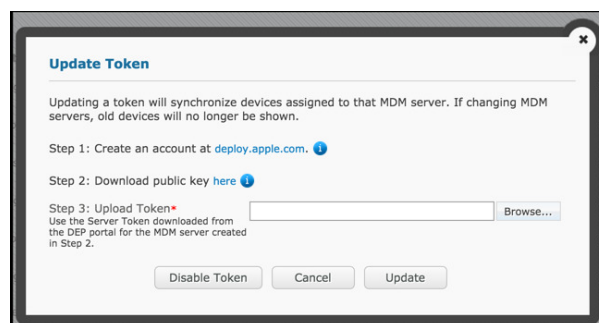
Chapter 2. Configuring the DEP options with the IBM MobileFirst Protect On-Premise Portal

Procedure

1. Log in to the main portal.
2. From the top navigation bar, go to **Setup > Deployment Settings**.



3. Select **Use Apple's Device Enrollment Program for Corporate iOS Devices** under **Advanced Management for Corporate iOS Devices**.
4. If desired, enter custom Authentication Screen Header Text. The enrollment screen shows the header text to the user during activation.
5. From the navigation bar, select **Devices > Enrollments**.
6. On the **Enrollments (Add Device Requests)** screen, click **Streamlined Enrollment**.
7. Follow the steps to download and save the IBM MobileFirst™ Protect public key. Apple uses the public key to generate an MDM token to link the IBM MobileFirst Protect MDM server with Apple.
8. Keep this window open.



The next set of steps gives you a token that you upload via this window.

Chapter 3. Downloading an MDM token from the Apple DEP Portal

Before you begin

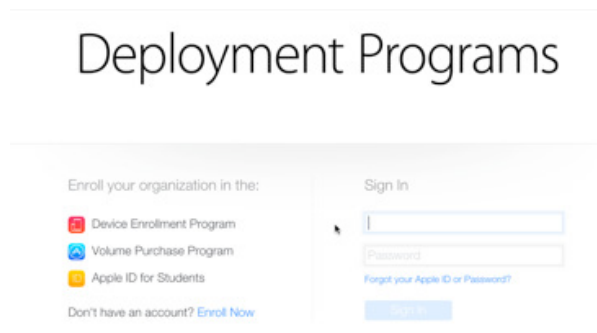
This step requires enrollment in the Apple Deployment Program. If you are not enrolled in Apple Deployment Program, see Apple's DEP home page, and Apple's DEP Guide. Enrolling takes up to 5 days.

About this task

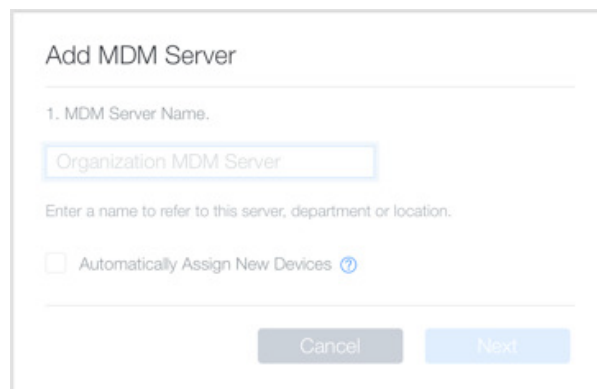
Perform the following steps in the Apple DEP Portal at <https://deploy.apple.com>.

Procedure

1. Log in to the Apple DEP Portal.



2. On the next screen, select **Add MDM Server** and enter the MDM server name. The name is an internal identifier and does not have to be specifically for a particular MDM solution vendor. Click **Next**.



3. Upload IBM MobileFirst Protect Public Key downloaded from the IBM MobileFirst Protect Administration Portal previously. Click **Next**.

Add "Demo Server"

2. Upload Your Public Key.

[Choose File...](#) No file selected

The public key certificate is used to encrypt the Authentication Token file for secure transfer to your MDM Server.

[Previous](#) [Cancel](#) [Next](#)

4. Download the MDM Server token and select **Done**.

Add "Demo Server"

3. Download and Install your Server Token.

[Your Server Token](#)

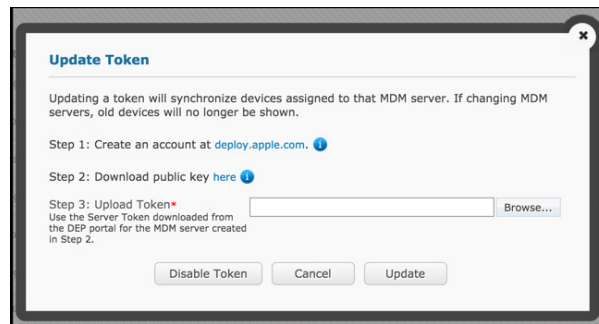
Contact your MDM vendor for installation instructions.

[Previous](#) [Done](#)

Chapter 4. Uploading the token to the IBM MobileFirst Protect On-Premise Portal

Procedure

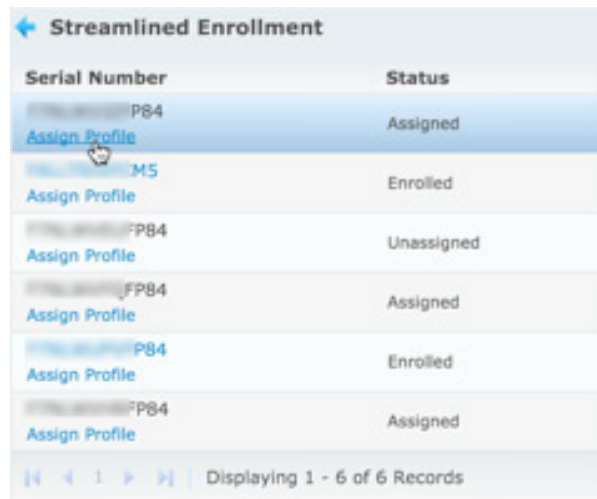
1. Upload the Server token to the deployment from the open window of the IBM MobileFirst Protect On-Premise Portal.



As soon as you upload the token, the deployment uses the token to find all the devices available for DEP. The IBM MobileFirst Protect On-Premise Portal displays a list of associated device serial numbers. IBM MobileFirst Protect refreshes serial numbers automatically every 4 hours, or on demand by clicking refresh.

You need to assign a profile to each device, which defines the initial setup experience.

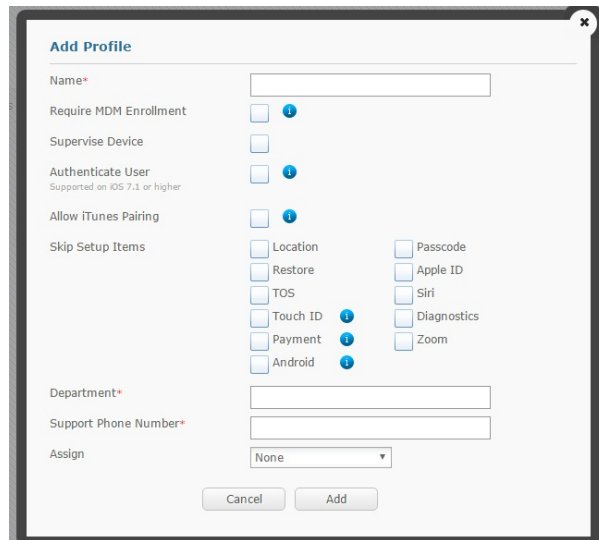
2. To assign a DEP profile to a device manually, click **Assign Profile**.



Serial Number	Status
[redacted] P84	Assigned
[redacted] M5	Enrolled
[redacted] P84	Unassigned
[redacted] FP84	Assigned
[redacted] P84	Enrolled
[redacted] P84	Assigned

3. To create a profile for the streamlined enrollment, click the **Profiles** option, and then **Add Profile**.

This profile becomes the default, and is synchronized to Apple's servers.



To see information about an option and the operating system it supports, put the mouse pointer over the option's information graphic.

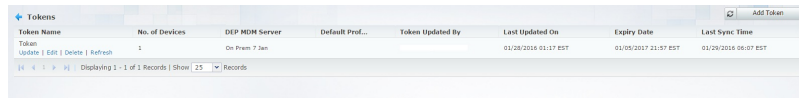
Option	Description
Profile Name.	Display name of the profile.
Set as Default Profile.	The default profile overrides an existing default. New devices and devices without an assigned profile get this profile.
Require MDM Enrollment.	This option requires users to enroll their device with IBM MobileFirst Protect during setup.
Supervise Device.	This option enables supervised policy options available in IBM MobileFirst Protect. When this option is enabled, you can prevent the device users from removing the MDM profile.
Authenticate User (iOS 7.1 or later).	This option prompts the user to authenticate during setup. After setup, they receive their assigned settings and content, like policies, rules, apps, and docs. Note: If you enable AD/LDAP integration through the Cloud Extender, the user name format is <i>domain\username</i> .
Allow iTunes Pairing.	This option allows the user to sync their device to iTunes.
Skip Setup Items.	Skip items such as Location, Apple ID, Siri, Touch ID, Restore, TOS, and Diagnostics.
Set Assignment.	A profile can be assigned to None , All Devices , or All unassigned devices .

4. Set a Department name and a support phone number, then click **Add**.
5. To change profiles for streamlined enrollments, click **Profiles**.



- To update, edit, delete, or replace tokens, click **Tokens**, then click **Update**, **Edit**, **Delete**, or **Refresh**.

You might have to enlarge the **Token Name** column to see all the options.



Token Name	No. of Devices	DEP MDM Server	Default Prof...	Tokens Updated By	Last Updated On	Expiry Date	Last Sync Time
Token Update Edit Delete Refresh	1	On Prem 7 Jan			01/28/2016 01:17 EST	01/05/2017 21:57 EST	01/29/2016 06:07 EST

Displaying 1 of 1 Records | Show | 25 | Records

- To add more tokens, click **Tokens**, then **Add Token**.

Notices

This information was developed for products and services that are offered in the USA.

IBM may not offer the products, services, or features discussed in this document in other countries. Consult your local IBM representative for information on the products and services currently available in your area. Any reference to an IBM product, program, or service is not intended to state or imply that only that IBM product, program, or service may be used. Any functionally equivalent product, program, or service that does not infringe any IBM intellectual property right may be used instead. However, it is the user's responsibility to evaluate and verify the operation of any non-IBM product, program, or service.

IBM may have patents or pending patent applications covering subject matter described in this document. The furnishing of this document does not grant you any license to these patents. You can send license inquiries, in writing, to:

*IBM Director of Licensing
IBM Corporation
North Castle Drive, MD-NC119
Armonk, NY 10504-1785
United States of America*

For license inquiries regarding double-byte character set (DBCS) information, contact the IBM Intellectual Property Department in your country or send inquiries, in writing, to:

*Intellectual Property Licensing
Legal and Intellectual Property Law
IBM Japan Ltd.
19-21, Nihonbashi-Hakozakicho, Chuo-ku
Tokyo 103-8510, Japan*

The following paragraph does not apply to the United Kingdom or any other country where such provisions are inconsistent with local law:

INTERNATIONAL BUSINESS MACHINES CORPORATION PROVIDES THIS PUBLICATION "AS IS" WITHOUT WARRANTY OF ANY KIND, EITHER EXPRESS OR IMPLIED, INCLUDING, BUT NOT LIMITED TO, THE IMPLIED WARRANTIES OF NON-INFRINGEMENT, MERCHANTABILITY OR FITNESS FOR A PARTICULAR PURPOSE. Some states do not allow disclaimer of express or implied warranties in certain transactions, therefore, this statement may not apply to you.

This information could include technical inaccuracies or typographical errors. Changes are periodically made to the information herein; these changes will be incorporated in new editions of the publication. IBM may make improvements and/or changes in the product(s) and/or the program(s) described in this publication at any time without notice.

Any references in this information to non-IBM websites are provided for convenience only and do not in any manner serve as an endorsement of those

websites. The materials at those websites are not part of the materials for this IBM product and use of those websites is at your own risk.

IBM may use or distribute any of the information you supply in any way it believes appropriate without incurring any obligation to you.

Licensees of this program who wish to have information about it for the purpose of enabling: (i) the exchange of information between independently created programs and other programs (including this one) and (ii) the mutual use of the information which has been exchanged, should contact:

*IBM Corporation
2Z4A/101
11400 Burnet Road
Austin, TX 78758 U.S.A.*

Such information may be available, subject to appropriate terms and conditions, including in some cases, payment of a fee.

The licensed program described in this document and all licensed material available for it are provided by IBM under terms of the IBM Customer Agreement, IBM International Program License Agreement or any equivalent agreement between us.

Any performance data contained herein was determined in a controlled environment. Therefore, the results obtained in other operating environments may vary significantly. Some measurements may have been made on development-level systems and there is no guarantee that these measurements will be the same on generally available systems. Furthermore, some measurements may have been estimated through extrapolation. Actual results may vary. Users of this document should verify the applicable data for their specific environment.

Information concerning non-IBM products was obtained from the suppliers of those products, their published announcements or other publicly available sources. IBM has not tested those products and cannot confirm the accuracy of performance, compatibility or any other claims related to non-IBM products. Questions on the capabilities of non-IBM products should be addressed to the suppliers of those products.

All statements regarding IBM's future direction or intent are subject to change or withdrawal without notice, and represent goals and objectives only.

This information is for planning purposes only. The information herein is subject to change before the products described become available.

This information contains examples of data and reports used in daily business operations. To illustrate them as completely as possible, the examples include the names of individuals, companies, brands, and products. All of these names are fictitious and any similarity to the names and addresses used by an actual business enterprise is entirely coincidental.

COPYRIGHT LICENSE:

This information contains sample application programs in source language, which illustrate programming techniques on various operating platforms. You may copy, modify, and distribute these sample programs in any form without payment to

IBM, for the purposes of developing, using, marketing or distributing application programs conforming to the application programming interface for the operating platform for which the sample programs are written. These examples have not been thoroughly tested under all conditions. IBM, therefore, cannot guarantee or imply reliability, serviceability, or function of these programs. The sample programs are provided "AS IS", without warranty of any kind. IBM shall not be liable for any damages arising out of your use of the sample programs.

Each copy or any portion of these sample programs or any derivative work, must include a copyright notice as follows:

Portions of this code are derived from IBM Corp. Sample Programs.

© Copyright IBM Corp. 2016. All rights reserved.

Trademarks

IBM, the IBM logo, and ibm.com are trademarks or registered trademarks of International Business Machines Corp., registered in many jurisdictions worldwide. Other product and service names might be trademarks of IBM or other companies. A current list of IBM trademarks is available on the web at www.ibm.com/legal/copytrade.shtml.

BYOD360™, Cloud Extender™, Control360®, E360®, Fiberlink®, MaaS360®, MaaS360® and device, MaaS360 PRO™, MCM360™, MDM360™, MI360™, Mobile Context Management™, Mobile NAC®, Mobile360®, Secure Productivity Suite™, Simple. Secure. Mobility.®, Trusted Workplace™, Visibility360®, and We do IT in the Cloud.™ and device are trademarks or registered trademarks of Fiberlink Communications Corporation, an IBM Company.

Linux is a trademark of Linus Torvalds in the United States, other countries, or both.

Microsoft, Windows, Windows NT, and the Windows logo are trademarks of Microsoft Corporation in the United States, other countries, or both.



Java™ and all Java-based trademarks and logos are trademarks or registered trademarks of Oracle and/or its affiliates.

UNIX is a registered trademark of The Open Group in the United States and other countries.

Terms and conditions for product documentation

Permissions for the use of these publications are granted subject to the following terms and conditions.

Applicability

These terms and conditions are in addition to any terms of use for the IBM website.

Personal use

You may reproduce these publications for your personal, noncommercial use provided that all proprietary notices are preserved. You may not distribute, display or make derivative work of these publications, or any portion thereof, without the express consent of IBM.

Commercial use

You may reproduce, distribute and display these publications solely within your enterprise provided that all proprietary notices are preserved. You may not make derivative works of these publications, or reproduce, distribute or display these publications or any portion thereof outside your enterprise, without the express consent of IBM.

Rights

Except as expressly granted in this permission, no other permissions, licenses or rights are granted, either express or implied, to the publications or any information, data, software or other intellectual property contained therein.

IBM reserves the right to withdraw the permissions granted herein whenever, in its discretion, the use of the publications is detrimental to its interest or, as determined by IBM, the above instructions are not being properly followed.

You may not download, export or re-export this information except in full compliance with all applicable laws and regulations, including all United States export laws and regulations.

IBM MAKES NO GUARANTEE ABOUT THE CONTENT OF THESE PUBLICATIONS. THE PUBLICATIONS ARE PROVIDED "AS-IS" AND WITHOUT WARRANTY OF ANY KIND, EITHER EXPRESSED OR IMPLIED, INCLUDING BUT NOT LIMITED TO IMPLIED WARRANTIES OF MERCHANTABILITY, NON-INFRINGEMENT, AND FITNESS FOR A PARTICULAR PURPOSE.



Product Number: 5725-R11

Printed in USA