

# Business Transformation & Information Applications

Chih-Feng Ku

Technical Manager, Asia Pacific

Analytics & Performance Management



IBM Information  
ON Demand 2010



INFORMATION-LED  
TRANSFORMATION

LEAD  
THE WAY



January 21 - SINGAPORE • January 26 – MALAYSIA • January 28 - THAILAND

# Transform Your Organization with Information



Volume of Digital Data



Variety of Information



Velocity of Decision Making

## Lack of Insight

1 in 3 managers frequently make critical decisions without the information they need

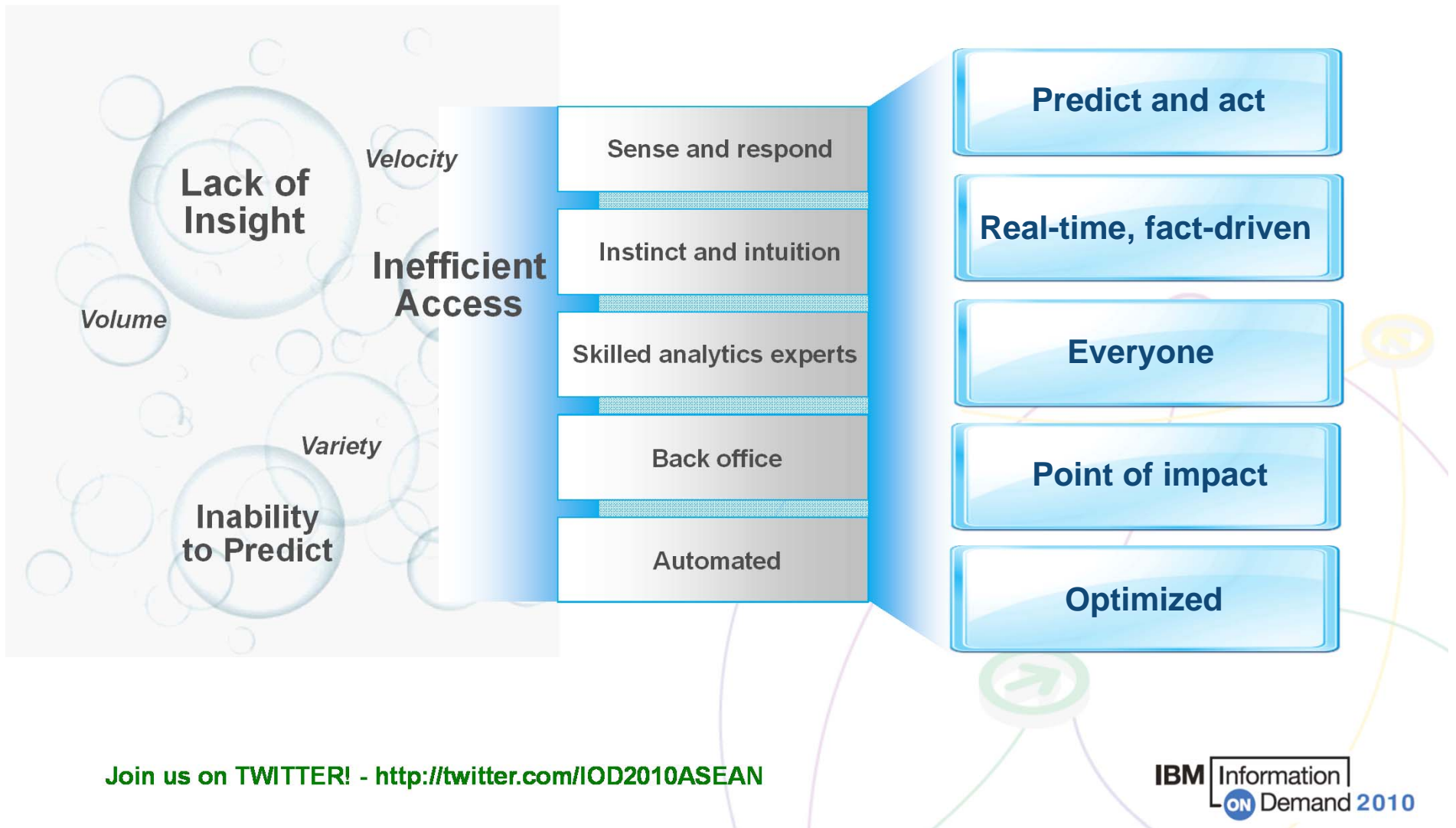
## Inefficient Access

1 in 2 don't have access to the information across their organization needed to do their jobs

## Inability to Predict

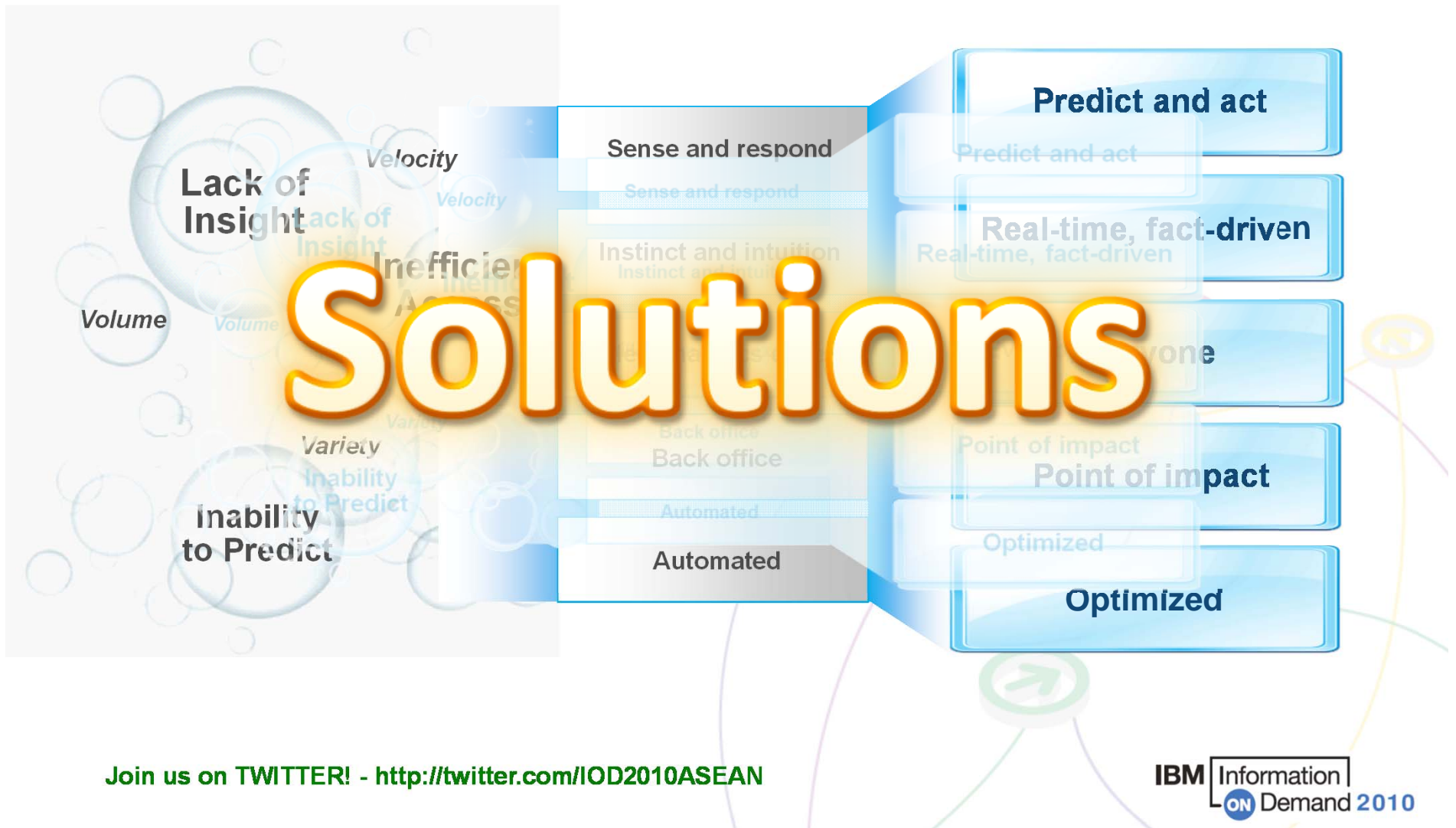
3 in 4 business leaders say more predictive information would drive better decisions

# New ways of working to optimize decisions and actions



Join us on TWITTER! - <http://twitter.com/IOD2010ASEAN>

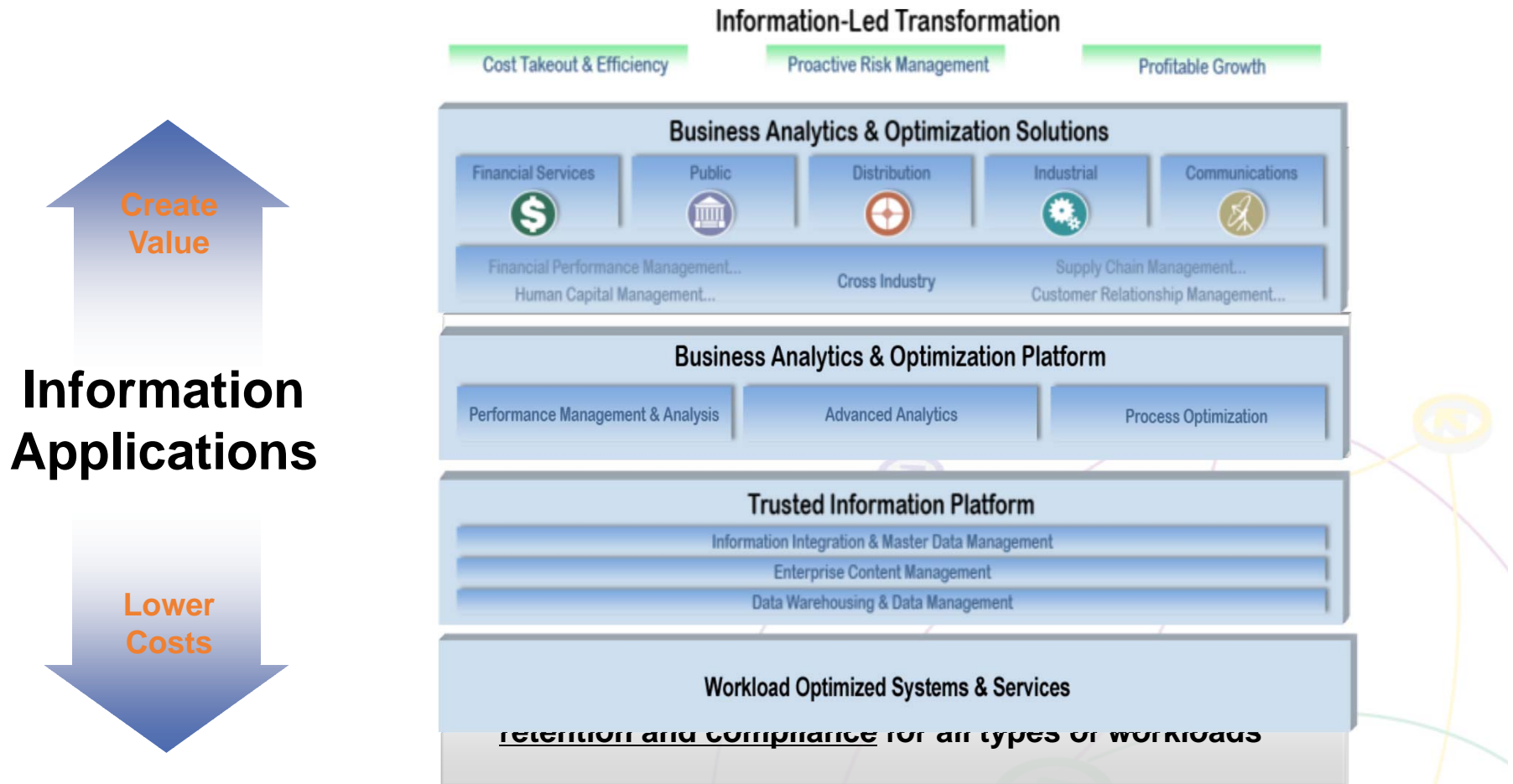
## New ways of working to optimize decisions and actions



Join us on TWITTER! - <http://twitter.com/IOD2010ASEAN>

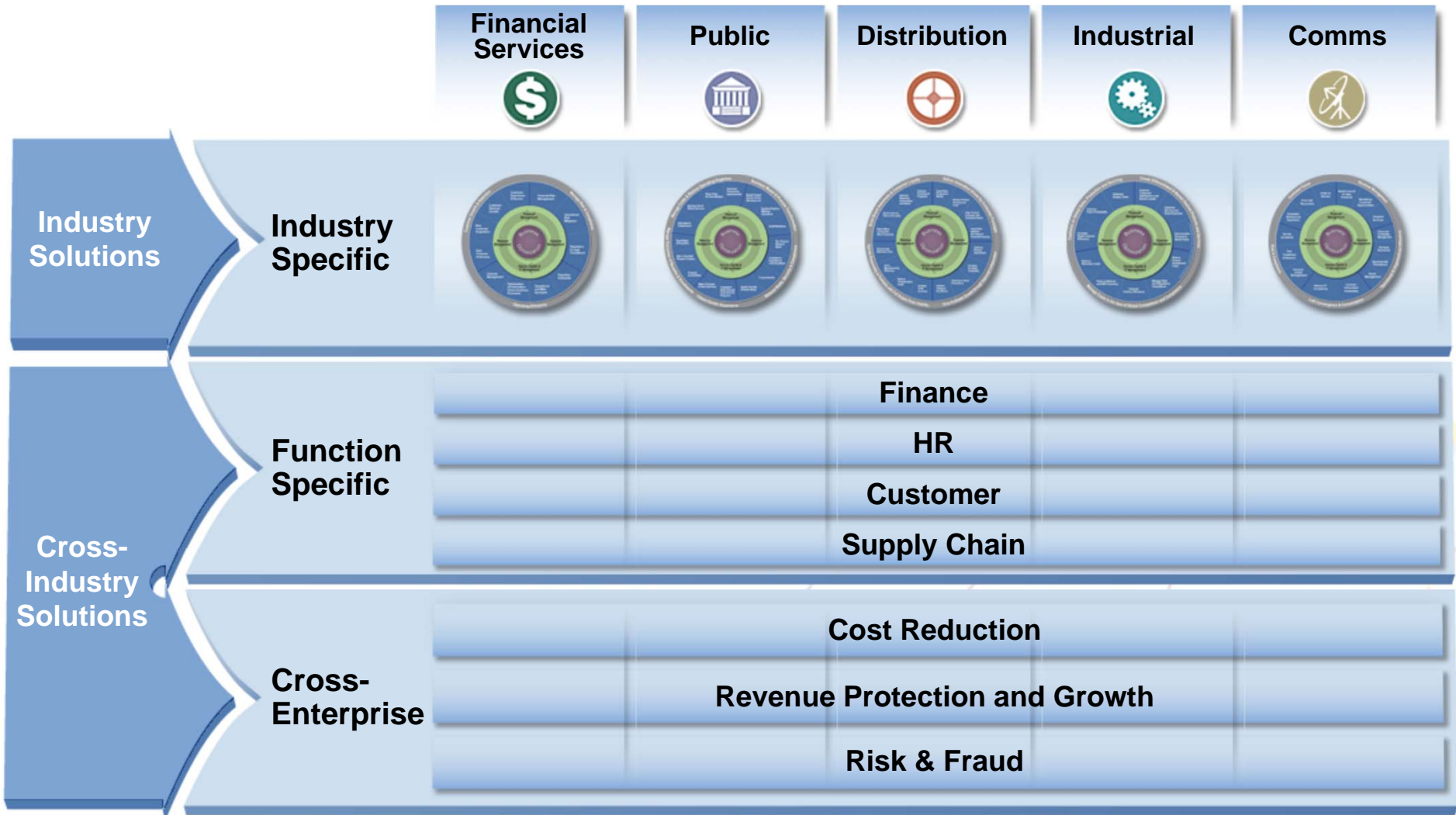


# Accelerating information-led transformation



Join us on TWITTER! - <http://twitter.com/IOD2010ASEAN>

# Accelerating information-led transformation



Join us on TWITTER! - <http://twitter.com/IOD2010ASEAN>

## Finance

### Performance Management Applications

- Enterprise Planning, Budgeting, and Forecasting
- Consolidation and Corporate Reporting
- Financial Analytics (e.g., profitability)
- Strategy Management & Scorecarding

### Performance Process

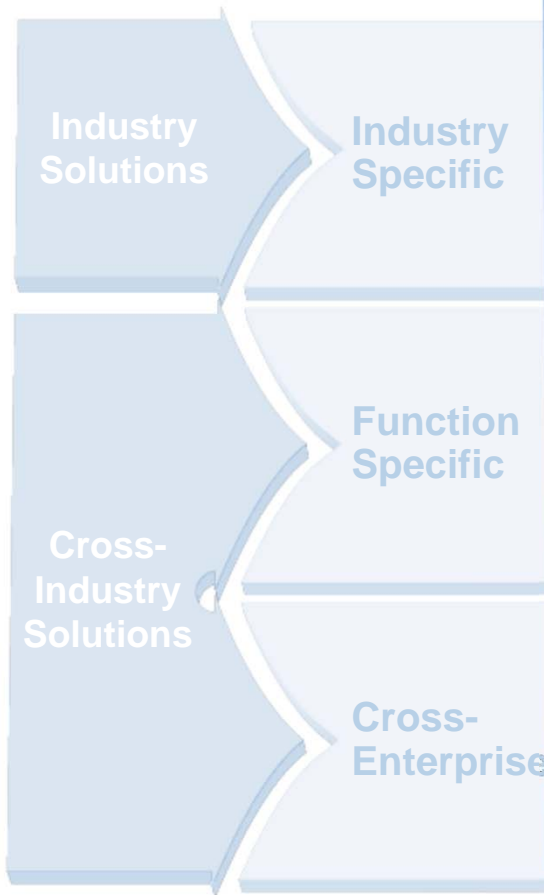


### Analytic Applications

#### Financial Performance

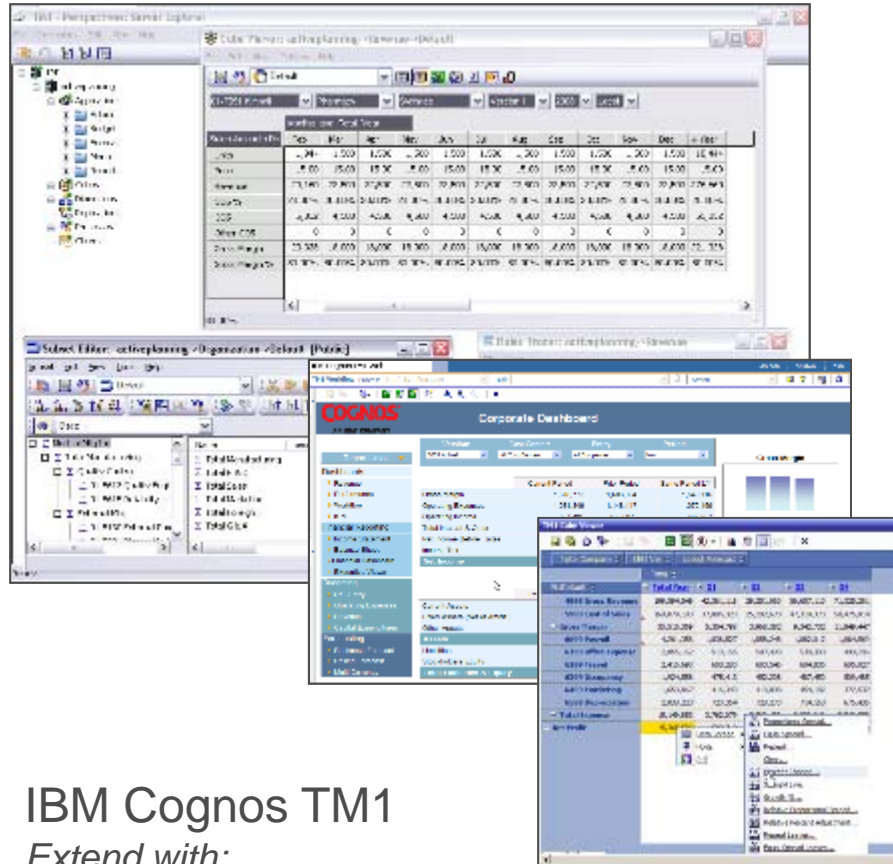
- General Ledger Analytics
- Accounts Receivable Analytics
- Accounts Payable Analytics

### Industry Frameworks



# Plan, Forecast, and Control

## IBM Cognos TM1



IBM Cognos TM1  
Extend with:  
IBM Cognos 8 BI  
Performance Blueprints

- A patented 64-bit read-write in-memory planning and analytic engine
- Multidimensional and Multi-cube
- Excel-based Modeling experience
- Familiar Excel & Web contribution interfaces
- Sophisticated spreading Input Methods
- Real-time Analytics

- High Data and User Scalability
- Model-Based Approach
- Supports Best Practices
- Fusion of Analysis & Planning
- Owned by Finance

Join us on TWITTER! - <http://twitter.com/IOD2010ASEAN>



# Advancing TM1 Capabilities

## IBM Cognos TM1 9.5

The screenshot displays the IBM Cognos TM1 9.5 interface. The top window shows a financial table with columns for various months and a 'Total' column. The bottom window shows a 'Scenario Editor' with a list of items and their associated expense accounts and total costs.

Item	Expense Account	Total Cost	
1	Report/Mkt Research	Overhead	\$64.0
2	Notes	Overhead	\$38.0
3	Assess for Trade Show	Computers & Technical Equip Rental	\$5.0
4	Bring client to program	Overhead	\$25.0
5	Assess for Trade Show	Office & Studio Equip Rental	\$3.0
6	Corporate follow-up	Travel & Entertainment	\$128.0
7	Team Dinner	Travel & Entertainment	\$128.0

**NEW**

- Personal Scenarios
- Contribution and Workflow
- Easier, Quicker Solution Deployment

Unmatched blend of high contribution planning and forecasting, scenario analytics and flexibility

# Blue Mountain

A diversified, year-round resort



- ROI: 1822% within one month
- Reduced labor costs by \$2.5 million/year
- Fast adjustments to inventories year-to-year

## Performance Pain

- Slow budgeting – delayed data/slow processes
- Data spread across 13 units from a multiplicity of systems
- Difficult maintenance for thinly stretched IT Staff

## IBM Solution Impact

- Faster, simplified budgeting process
- Access to daily reports that directly support profitability
- Advanced analytics to identify staffing levels and drive marketing campaigns
- Improved inventory management

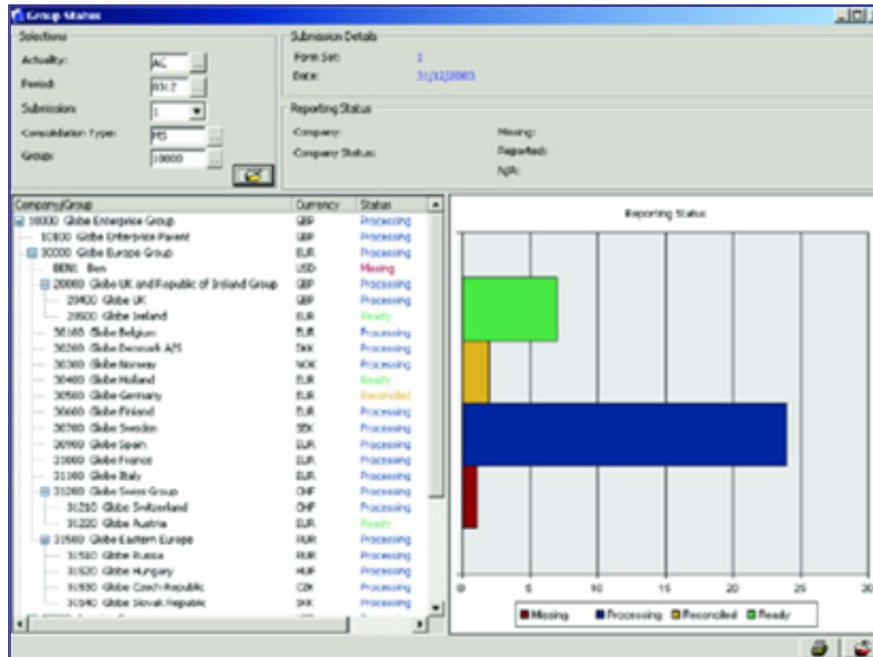


Nucleus Research  
[www.nucleusresearch.com](http://www.nucleusresearch.com)

Join us on TWITTER! - <http://twitter.com/IOD2010ASEAN>

# Close, Consolidate and Report

## IBM Cognos 8 Controller



IBM Cognos 8 Controller

Extend with:

IBM Cognos TM1

IBM Cognos 8 BI

Performance Blueprints

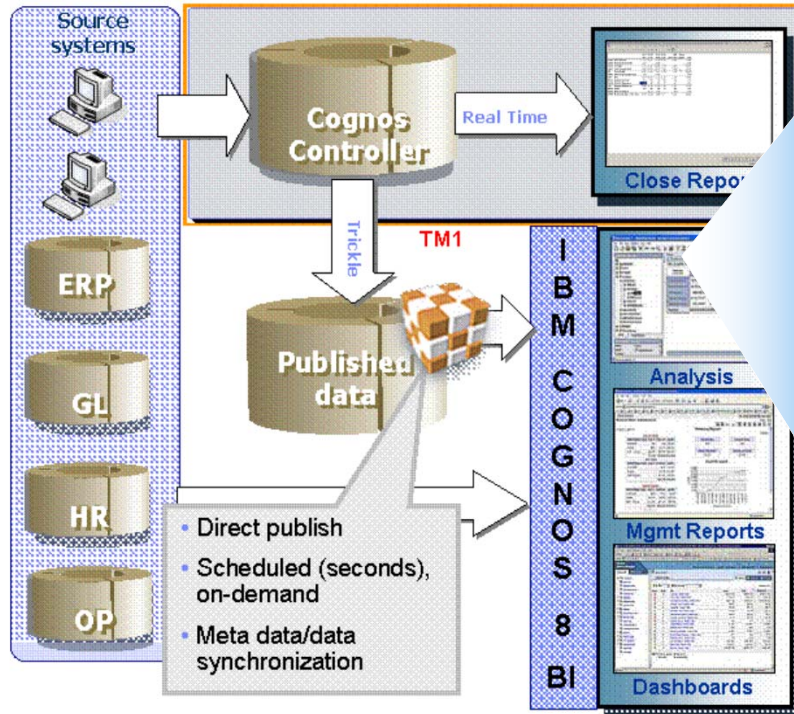
Join us on TWITTER! - <http://twitter.com/IOD2010ASEAN>

- Application Framework
- Close Cycle Management
- Integrated Consolidation Processes
- Publish Financial Statements
- Management Reporting & Analytics

- Finance-Managed
- Global and Local Consolidation Best Practices
- Financial Reporting & Analytic Standardization

# Advancing Controller Capabilities

## IBM Cognos 8 Controller 8.5



- Enhanced Global Consolidation
- Enhanced User Experience
- Extended Financial Analytics

**NEW**

Best-in-class, built-for-purpose engine; unmatched financial analytics powered by TM1



# TeliaSonera



Leading Telco in  
Nordic & Baltic Region  
with over 9.2 Billion  
Euro in Revenue and  
Employees numbering  
28,500, 400 entities,  
350 Named users, and  
7,000 Accounts



## Performance Pain

- Unable to deliver both statutory deadlines and management reporting views of the business
- Coordinate a single view across multiple currencies and legal entities
- Inability to deal with the complexity of multi-currency consolidation and reporting in multiple legal jurisdictions

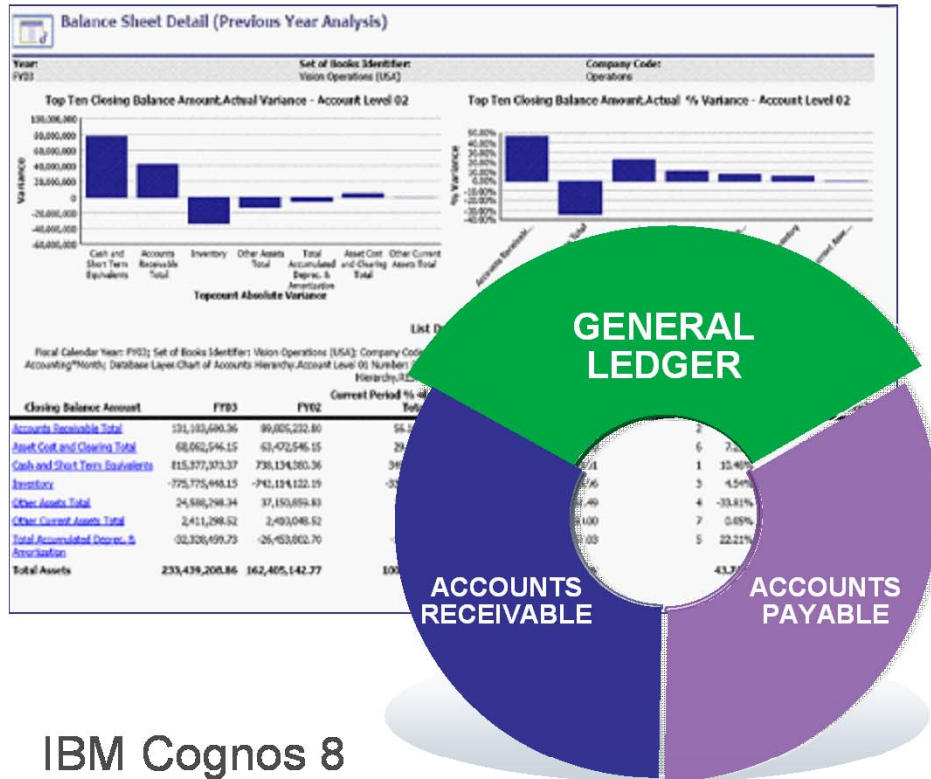
## IBM Solution Impact

- Implemented legal and management rollup in more than 20 currencies and 100's of intercompany transactions
- Complex ownership with minority interests, associated companies and cross ownership
- Complex legal consolidation: Inflation reporting, IAS 39 (IFRS), multiple GAAP's
- Mgmt views: Mobility, Broadband, Integrated Enterprise Service and Eurasia

Join us on TWITTER! - <http://twitter.com/IOD2010ASEAN>

# Analyze & Optimize

## IBM Cognos 8 Financial Performance Analytics



IBM Cognos 8  
Financial Performance Analytics

Extend with:

IBM Cognos TM1

IBM Cognos 8 BI

Join us on TWITTER! - <http://twitter.com/IOD2010ASEAN>

### → Packaged Reporting & Analytics

- Predefined content
- Connectors to sources

### → Adaptable to change in content & context

### → Extendable platform

- Rapid ROI
- Configurable & Adaptable
- GL/AR/AP Performance Visibility

# Cartus



“...using Financial Performance Analytics to provide executives and LOB managers a unified financial view to ... help them drive smarter financial decisions across the enterprise.”

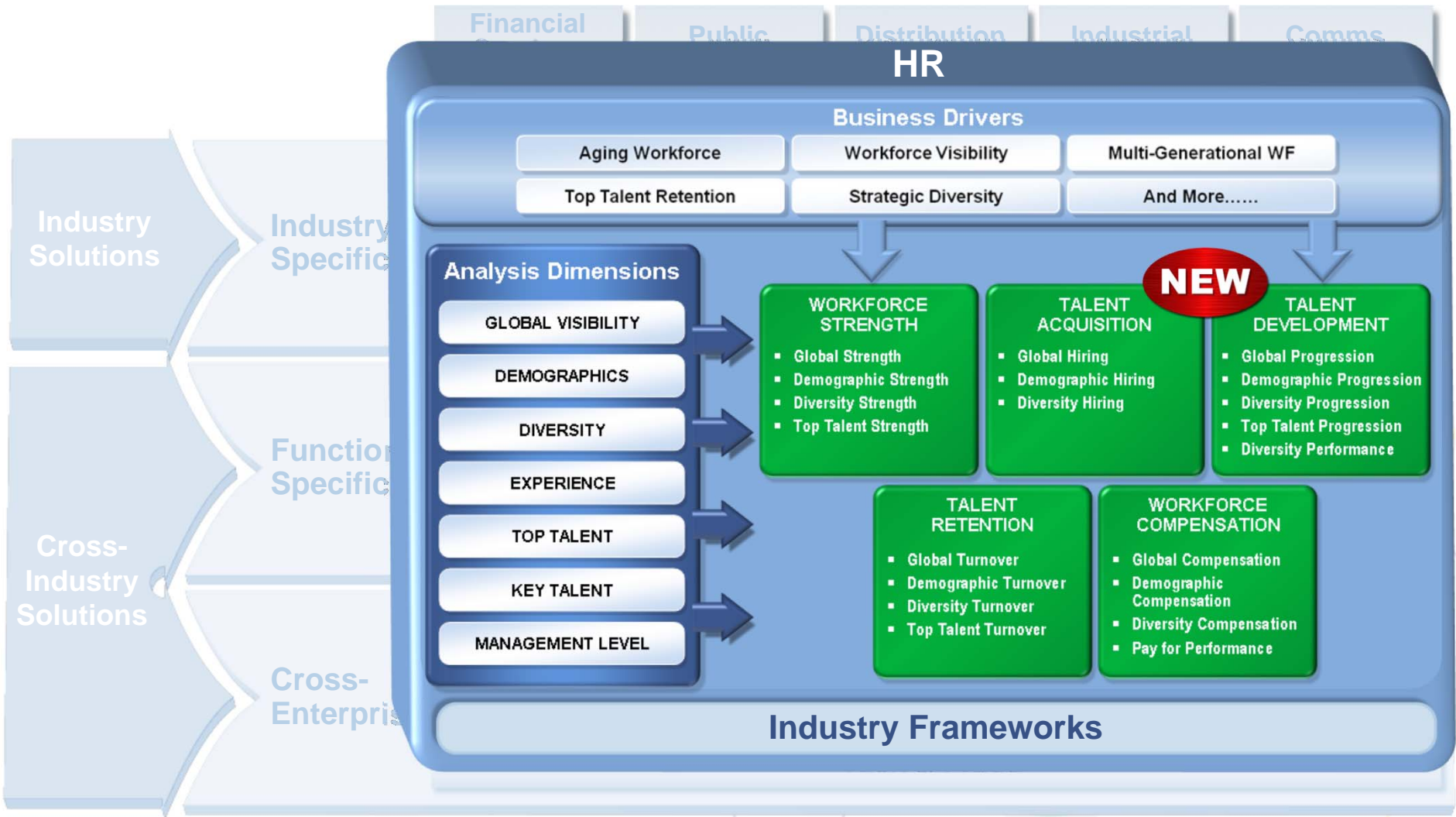
*Greg McMahon, Director BI*

## Performance Pain

- Inconsistent financial view for all operating units
- Cumbersome month- and quarter-end financial reporting

## IBM Solution Impact

- Executives have access to unified view of financial performance
- Consistent financial metrics enterprise wide
- More accurate financial management reporting





## Arthur J. Gallagher



“... ready access to strategic information and professional-development tools that will support growth ... [with] analytical capabilities they need to identify trends early on and make informed decisions.”

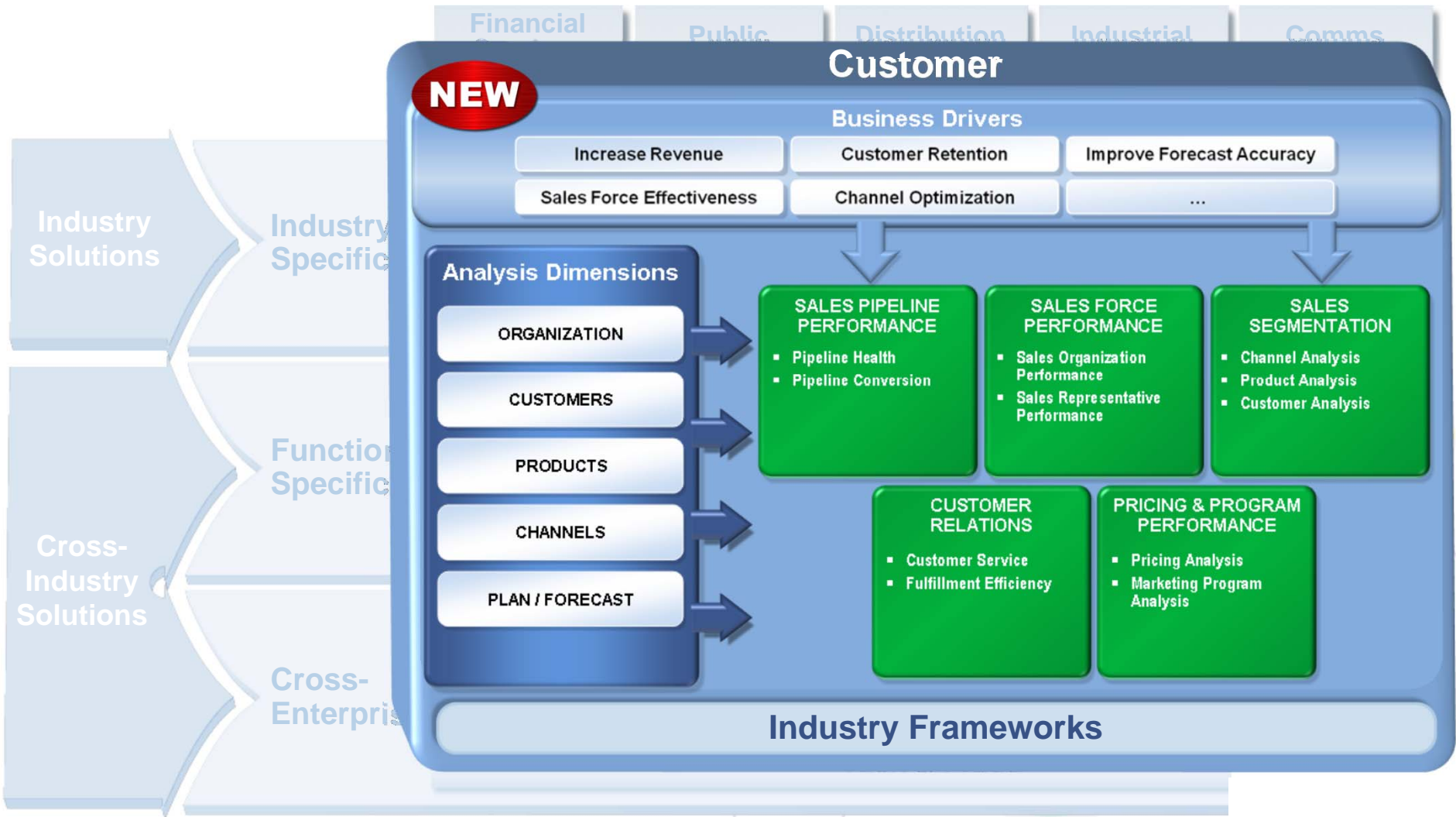
*Pam Wilfong, VP HR, A.J.G*

## Performance Pain

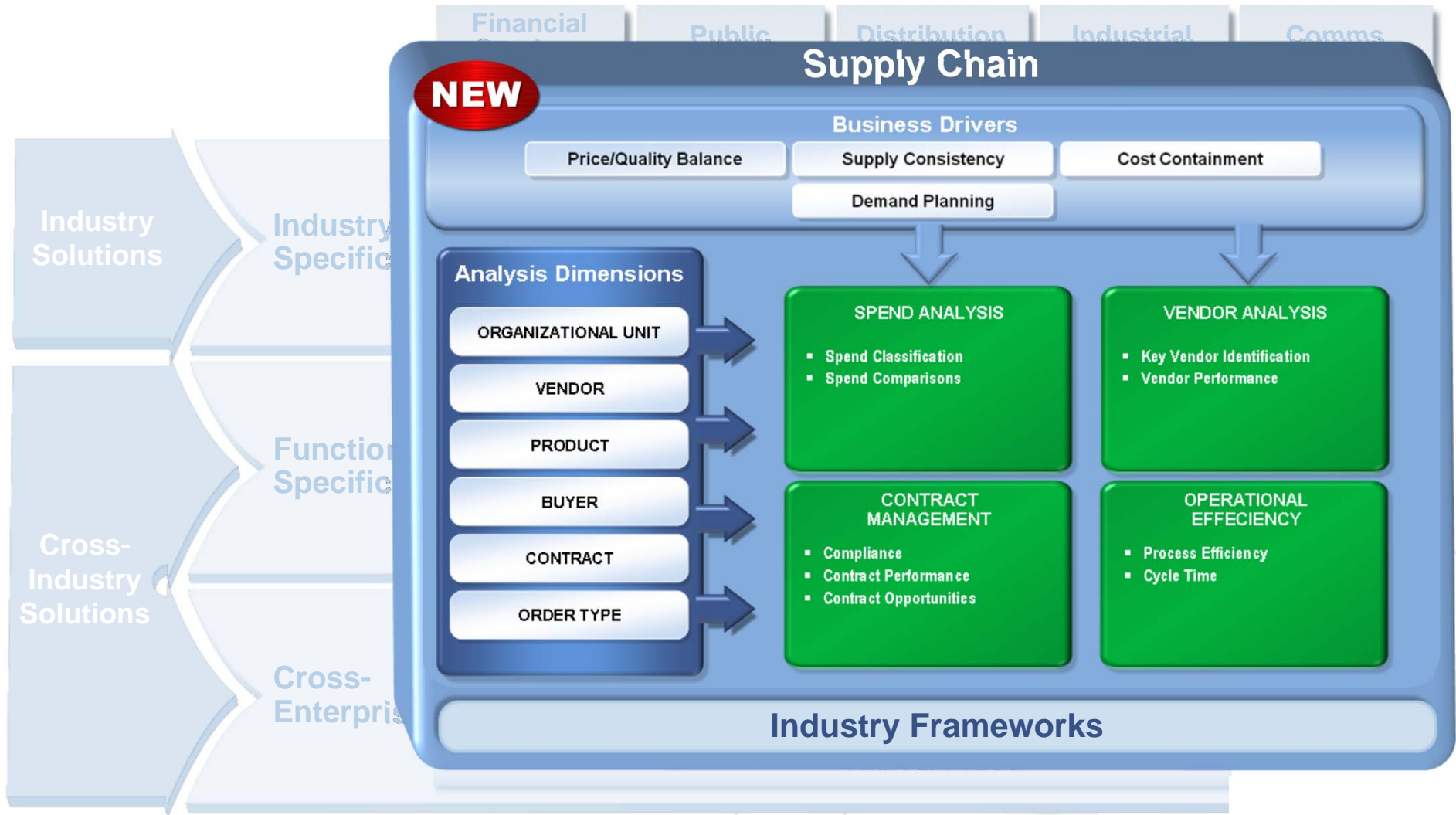
- Small team of HR professionals supporting 9000 employees - highly distributed offices
- Need a standardized assessment of cost and management of compensation and talent acquisition.

## IBM Solution Impact

- Standard workforce measurement metrics deployed through the organization
- Ability to measure and assess talent and HR needs against aggressive business objectives



Join us on TWITTER! - <http://twitter.com/IOD2010ASEAN>



Join us on TWITTER! - <http://twitter.com/IOD2010ASEAN>

# When Selling Harder Isn't Working Smarter



Finance



Sales



Procurement



HR

## Why is revenue for our marquee product off vs. plan?

### *Enterprise Planning & Forecasting with IBM Cognos FPM*

- Rolling Revenue Plans & Forecasts at any level of detail

### *IBM Cognos 8 Financial Performance Analytics*

- Revenue by Account Trend & vs. Plan

### *IBM Cognos 8 Customer Performance Sales Analytics*

- Sales Segmentation Dashboard
- Sales and Margin by Customer
- Item Quality Report & Item Return Reason Report

### *IBM Cognos 8 Supply Chain Procurement Analytics*

- Item Quality Issue
- Vendor Performance Dashboard & Vendor Profile Dashboard

### *IBM Cognos 8 Workforce Performance and Talent*

- Workforce Performance Dashboard
- Stage Cycle Times by Region for New Hires



## Summary

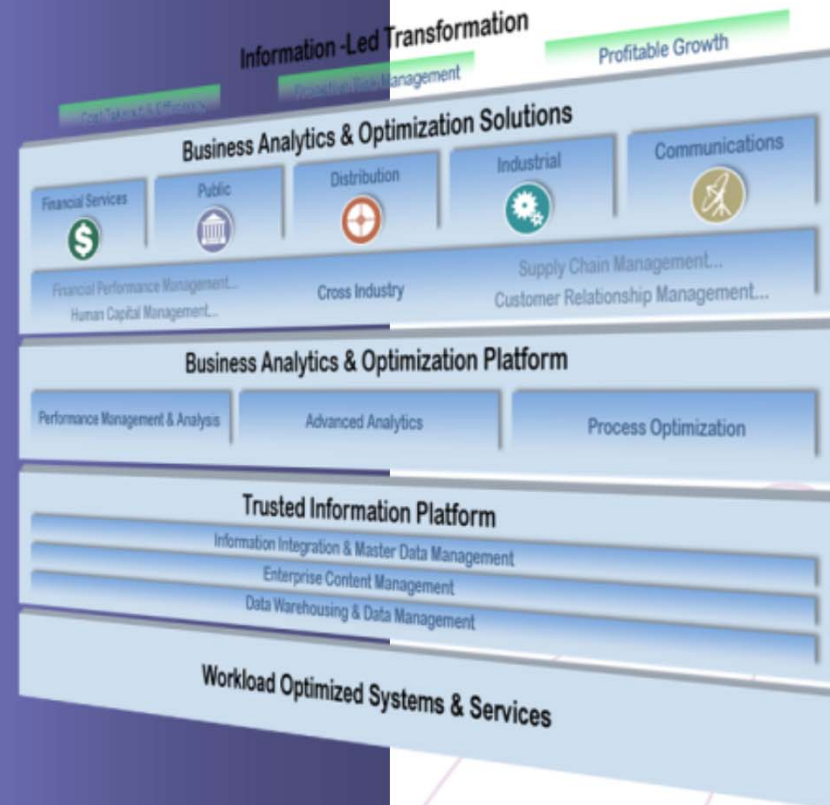
Information Applications can dramatically accelerate your transformation

With new and improved applications across financial, supply chain, sales and workforce ...

...there has never been a better time to learn more

...leverage know-how you already have

...and access the expertise to accelerate your success



ovum

Join us on TWITTER! - <http://twitter.com/IOD2010ASEAN>

“...Since 2006, IBM has deliberately & doggedly constructed an unparalleled portfolio... it's difficult to see how any competitors will be able to compete anytime soon...”

# Thank You



IBM Information  
ON Demand 2010



INFORMATION-LED  
TRANSFORMATION

LEAD  
THE WAY



January 21 - SINGAPORE • January 26 – MALAYSIA • January 28 - THAILAND