

IBM Datacap

A cluster of overlapping, semi-transparent geometric shapes in various colors including blue, green, yellow, and purple, arranged in a roughly triangular pattern pointing towards the top right.

Viktor BEŇO, ECM Solution Consultant

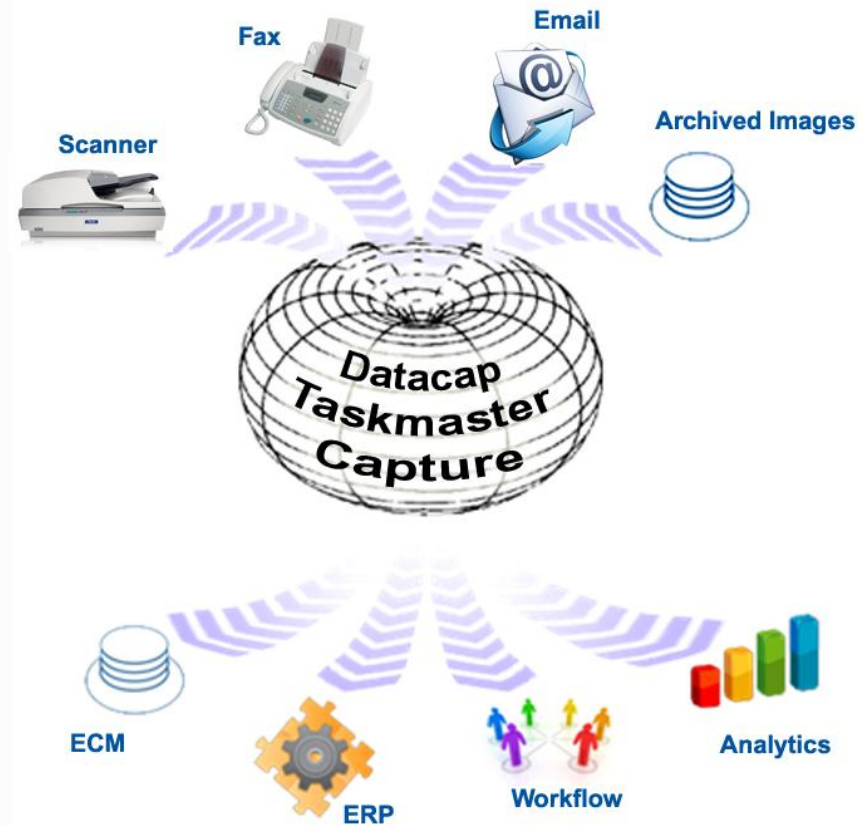
viktor.beno@sk.ibm.com



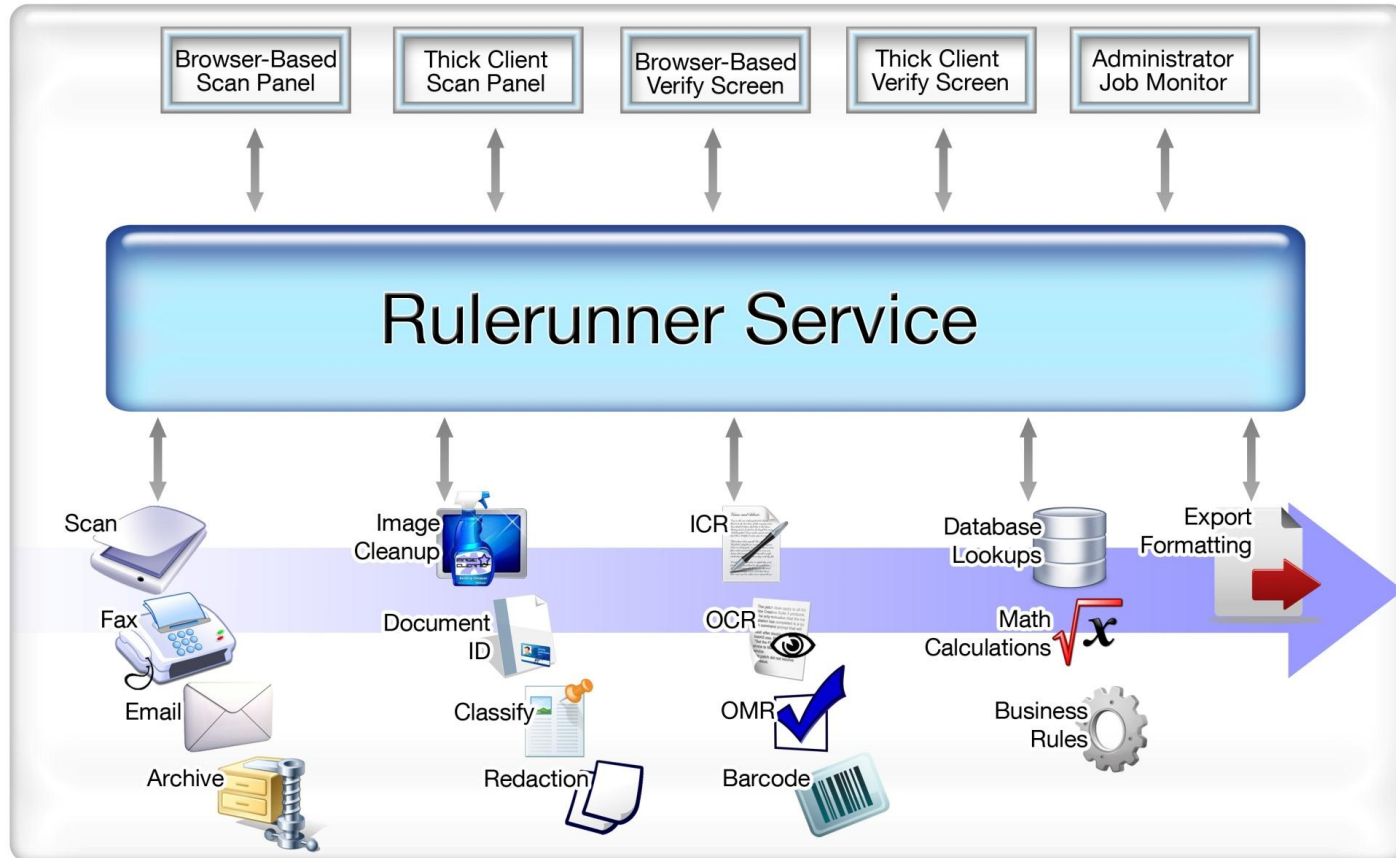
Enterprise Capture

“Enterprise capture uses common software to capture and extract information from documents enterprise-wide, either for a single business function in multiple locations, or for multiple business functions across the enterprise” -

Harvey Spencer, “Business Empowerment Through Enterprise Capture”

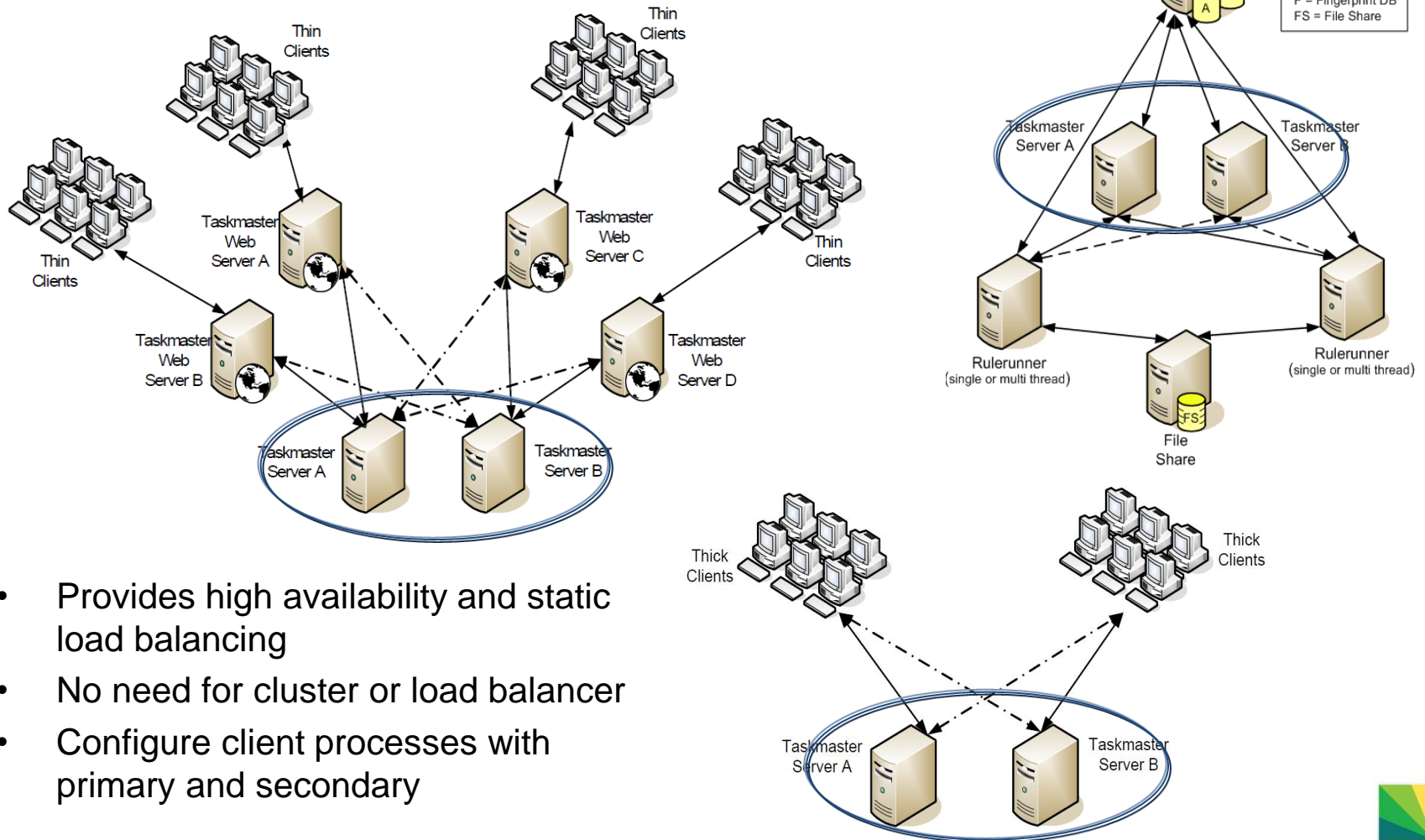


Taskmaster Architecture: Robust, Flexible, Scalable



Availability, scalability, configurability, manageability

Active-active support of Taskmaster Server



- Provides high availability and static load balancing
- No need for cluster or load balancer
- Configure client processes with primary and secondary



Typical Performance of Common Actions

Action	Second per Page
Read barcodes (depending on number and method)	0.50
Enhance image	0.40
Analyze image & find fingerprint	0.80
Rotate page	0.10
Recognize a page using OCRS (varies)	1.50 to 10
Convert MS Word Document to single page TIFF files	0.40
Convert gray-scale or color TIFF to BW TIFF	0.75
Create PDF image only using DC PDF	0.05
Create PDF with text using OCRS	1.50

The typical values are based on testing with sample applications and documents that are not representative of all situations. Actual values vary based upon customer-specific images, data, and environment. Testing using customer sample documents is highly recommended.



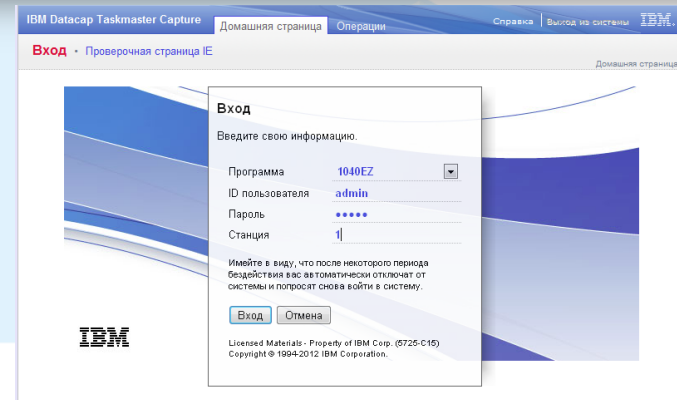
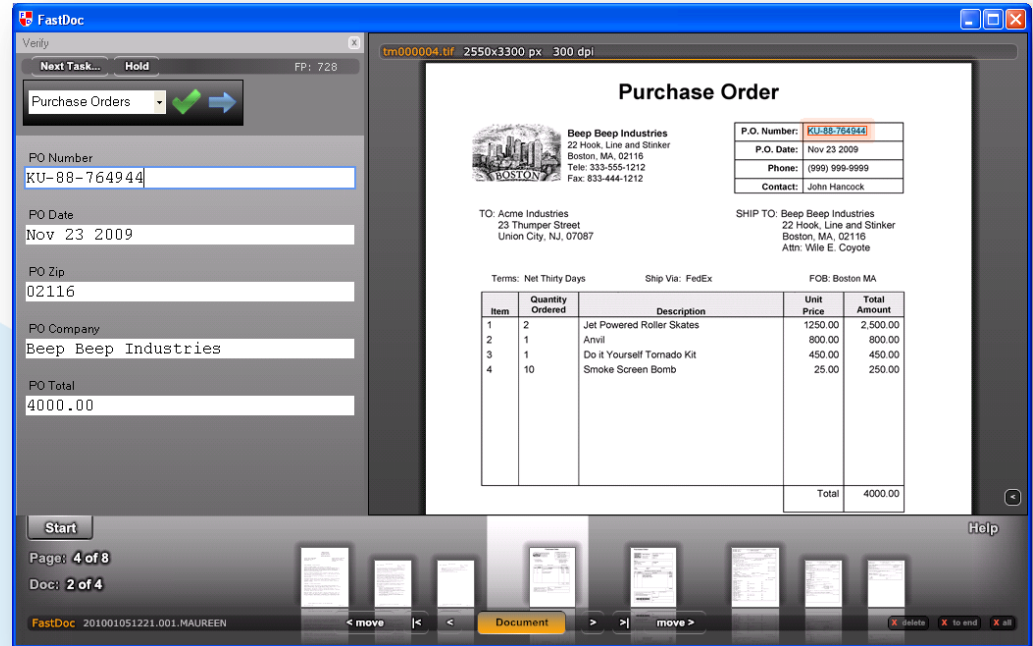
IBM Datacap

WHAT'S NEW



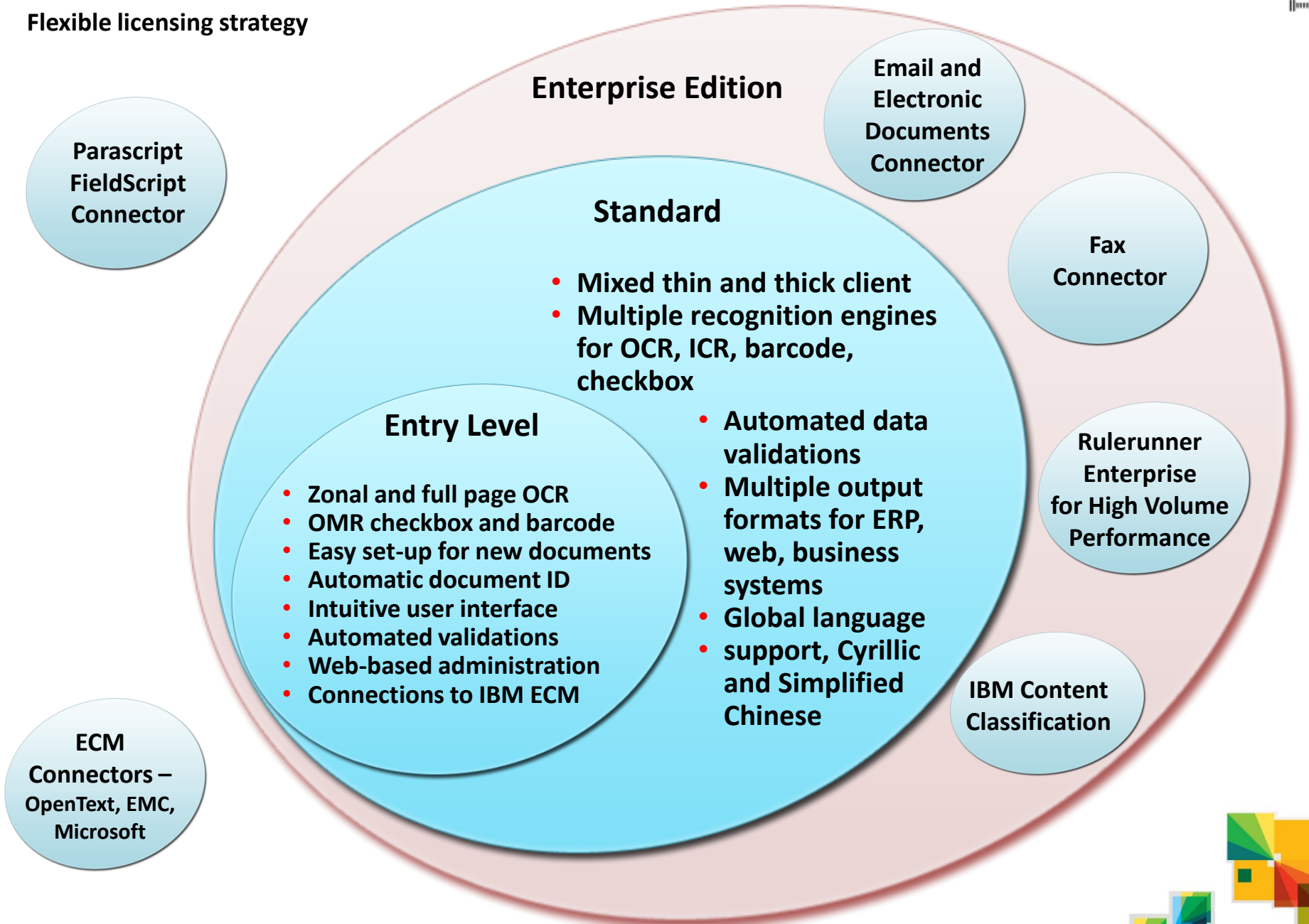
What's New In Datacap Taskmaster 8.1?

- **New User Interface for Scan and Verify**
- Highly customizable, feature-rich environment
- **Smart Fields**
 - Database lookups,
 - math calculations,
 - business rules



Datacap Taskmaster Capture

Flexible licensing strategy



Packaging and Pricing

IBM Product Name	Pricing Metric*	Comments
IBM Datacap Taskmaster Capture (Base)	AUVU* EUVU*	Includes Web and Windows clients, rules engine, recognition software for machine print (OCR), handprint (ICR), bar codes and optical marks (OMR), export to FileNet P8, Content Manager, FileNet Image Services, more.
IBM Datacap Taskmaster Entry Level	AUVU* EUVU*	Licensee is not authorized to use any of the following components/functions: (Similar functionality to FastDoc Capture) <ul style="list-style-type: none"> ● DotScan or DotEdit User Interfaces ● TaskMaster Web Scanning and Verification User Interfaces ● Program functions that execute on Web Server or a Web client other than for administration of the Program ● Nuance ScanSoft OCR ● OpenText Recostar ICR ● Rulerunner in multi-thread mode
Trade Up from Taskmaster Entry Level	AUVU* EUVU*	
Datacap Enterprise Edition	AUVU* EUVU*	Bundle of: <ul style="list-style-type: none"> ● IBM Datacap Taskmaster Capture Connector for eMail and Electronic Documents 8.1 ● IBM Datacap Taskmaster Capture Connector for Fax 8.1 ● IBM Datacap Rulerunner Enterprise 8.1 ● IBM Content Classification 8.8



What's New In Datacap - part 2

- System monitor support
 - Display Taskmaster usage data in System Dashboard for ECM
- Archive enhancement
 - Active – Active support of Taskmaster
 - Rullerunner enhancement
- REST Web Service API
- Security and network support enhancements
- Pricing



Language Support Enhancements

- Double-byte Unicode for globalization support
 - GUI/display, entry/processing/DB, recognition, actions
- Simplified Chinese support
- Cyrillic (Russian) support
- Multi-cultural/lingual support
- Language support matrix

English, Simplified Chinese, Cyrillic, Portuguese (Brazilian), French, Spanish (Castilian), German, Italian, Swedish, Dutch, Polish, Czech, Slovak, Romanian, Croatian, Hungarian and Turkish

Datacap Taskmaster Connector to Classification Module

- Taskmaster
 - Extracts text using OCR – Optical Character Recognition
 - Calls Classification Module to identify the page
- Classification Module analyzes the text content
 - Uses natural language processing and semantic analysis
 - Assigns confidence score to each category suggestion (0 – 100)
 - Returns the classification results to Taskmaster



Why is IBM Datacap Better?

- **Tight Integration with ECM Suite**
 - Repository, Workflow, Analytics, Defensible Disposal, Governance, Advanced Case Management
- **Superior Architecture**
 - Single highly scalable product (thick or thin clients)
 - Single product
- **Rules Orchestration**
- **User based licensing model**
- **New Competitive Trade-Up Pricing**



Online Resources: Where to find documentation

- Information center
 - <http://pic.dhe.ibm.com/infocenter/datacap/v8r1m0/index.jsp>
- What 's new in version 8.1:
 - http://pic.dhe.ibm.com/infocenter/datacap/v8r1m0/topic/com.ibm.datacapture.doc/dc_whats_new.htm
- Information Roadmap :
 - <http://www-01.ibm.com/support/docview.wss?uid=swg27035746>
- Publication library
 - <http://www-01.ibm.com/support/docview.wss?uid=swg27035774>



THANKS



IBM Case Manager

BACKUP SLIDES



Language Mat

Language	Data Entry	User Interface	OCR-S	OCR-S Legal Dict.	OCR-S Financial Dict.	OCR-S Medical Dict.	OCR-A	OCR-C	OCR-P	Classification Module	Admin/ins tall doc...	Online Help
	Recognition									Doc		
Afrikaans	x	x					x	x				
Albanian	x	x					x	x				
Bosnian (Latin)	x							x				
Catalan	x	x					x	x				
Chinese (Simplified)	x	x	x									
Croatian	x	x	x				x	x				
Czech	x	x	x				x	x				
Danish	x	x	x				x	x				
Dutch	x	x	x	x		x	x	x		x		
Dutch (Belgium)	x						x					
English	x	x	x	x	x	x	x	x	x	x	x	x
Esperanto	x		x				x					
Estonian	x		x				x	x				
Faroese	x		x				x	x				
Finnish	x		x				x	x				
French	x	x	x	x		x	x	x		x		
Gaelic (Ireland)	x		x				x	x				
Gaelic (Scotland)	x		x				x					
German	x	x	x	x		x	x	x		x		
Hungarian	x	x	x				x	x				
Icelandic	x		x				x	x				
Italian	x	x	x				x	x		x		
Latvian	x		x				x	x				
Lithuanian	x		x					x				
Maltese	x		x				x					
Norwegian	x		x				x	x		x		
Polish	x	x	x				x	x				
Portuguese (Brazil)	x	x	x				x	x		x		
Portuguese (Standard)	x		x				x	x		x		
Rhaeto-Romanic	x		x				x	x				
Romanian	x	x	x					x				
Russian	x	x	x				x					
Sami	x		x									
Sami Northern	x		x									
Sami Southern	x		x									
Serbian (Latin)	x		x					x				
Slovak	x	x	x				x	x				
Slovenian	x		x				x	x				
Spanish	x	x	x				x	x		x		
Swahili	x		x				x	x				
Swedish	x	x	x				x	x		x		
Turkish	x	x	x				x	x				

