



IBM Software Group

Deploying and Modernizing Core System z Applications with CICS Tools



ON DEMAND BUSINESS™

Preface

The following are trademarks of International Business Machines Corporation in the United States, other countries, or both:

IBM, CICS, CICS/ESA, CICS TS, CICS Transaction Server, CICSplex, DB2, MQSeries, OS/390, S/390, WebSphere, z/OS, zSeries, Parallel Sysplex.

Java, JavaBeans, and all Java-based trademarks and logos are trademarks of Sun Microsystems, Inc. in the United States, other countries, or both.

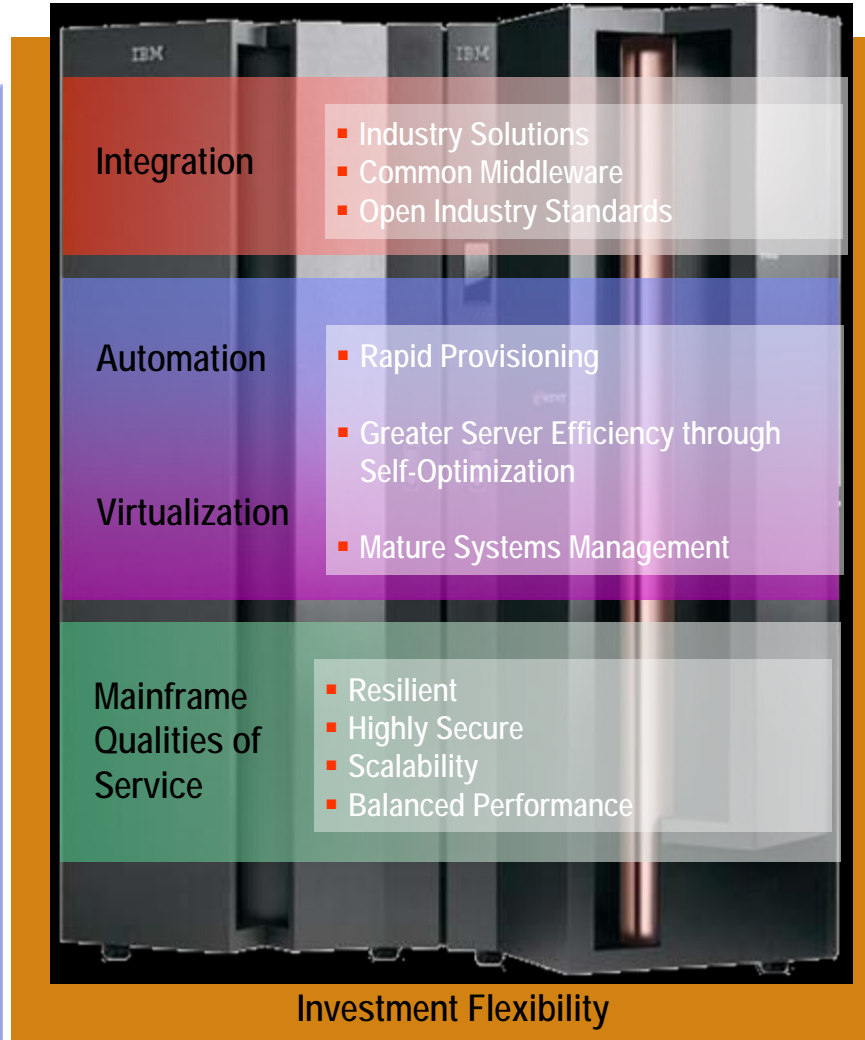
Microsoft, Windows, Windows NT, and the Windows logo are trademarks of Microsoft Corporation in the United States, other countries, or both.

Other company, product, and service names and logos may be trademarks or service marks of others.

System z core values – Built upon a 40-year heritage. . . And still relevant

Business Challenges

- Financial Pressures
- Security and Operational Resiliency
- Simplify Infrastructure Complexity
- Accelerate Time-to-Market
- Increase Revenues
- Deploy New Capabilities



IT Challenges

- Be responsive to changing business needs
- Meet service level agreements
- Increase server and IT resource utilization
- Help reduce IT Costs
- Develop new applications while mitigating risk



Business challenges you are facing today

- **Sarbanes-Oxley**

- ▶ Audit Requirements
- ▶ Change Control Requirements
- ▶ More Work with less people

- **Budgets**

- ▶ Work may have moved to a remote location
- ▶ New applications from a merger or acquisition
- ▶ Documentation or lack of documentation



Business challenges you are facing today

- **Disaster recovery and other outages**
 - ▶ VSAM and DB2 integration
 - ▶ CICS and batch integration

- **Performance and Tuning**
 - ▶ CICS Region Level
 - ▶ Application Level

- **Service Level Agreements**
 - ▶ 24 x 7 is applying to more applications
 - ▶ Raising the bar again



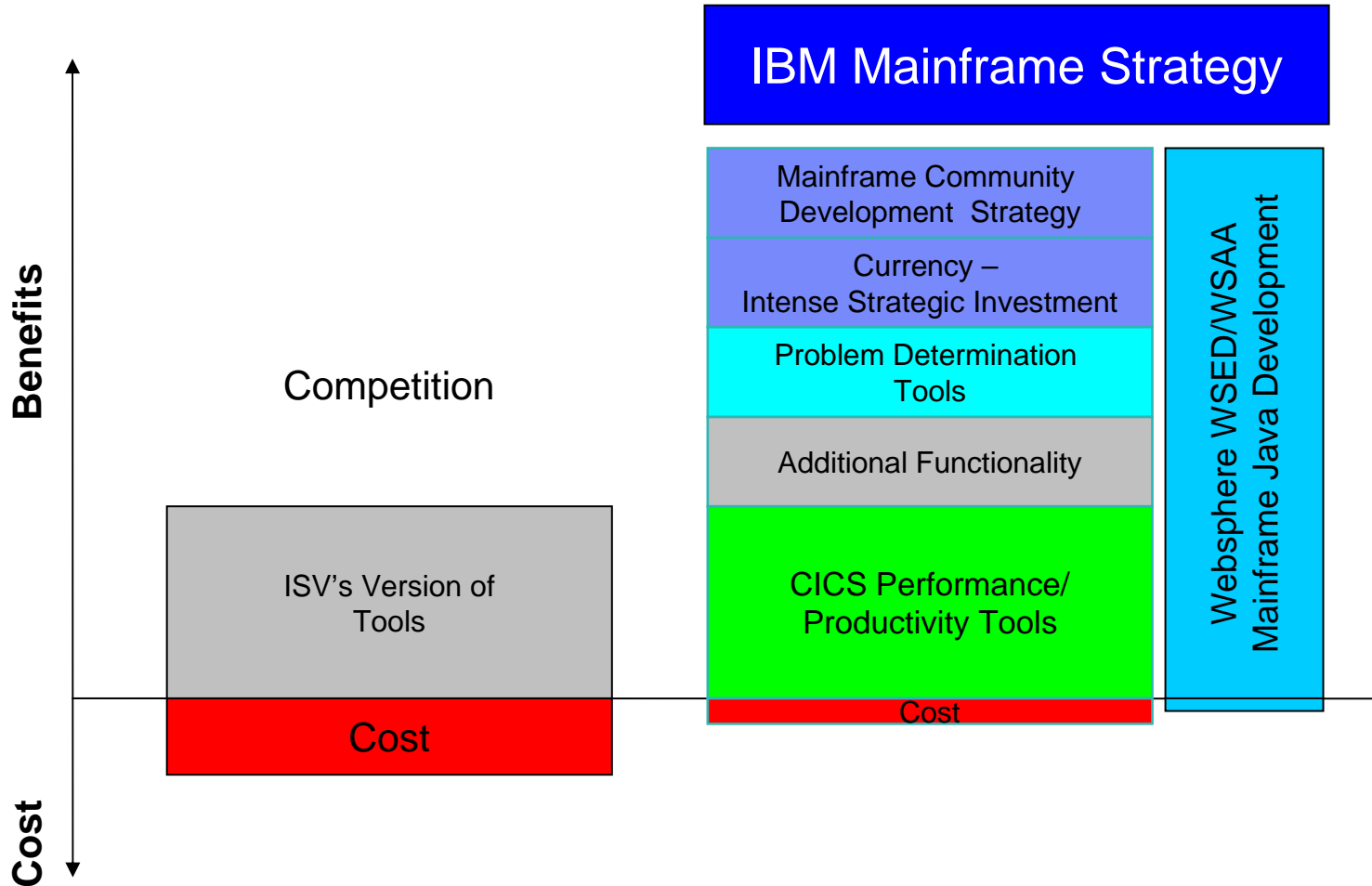
Business challenges you are facing today

- **Service Oriented Architecture (SOA)**
 - ▶ **Legacy green screen applications – How to find:**
 - Presentation logic
 - Integration logic
 - Business logic
 - Data access logic

- **Web Access to CICS**
 - ▶ Transaction scope
 - ▶ Performance
 - ▶ Granularity
 - ▶ State management



IBM Tools Focus - Increase Productivity - Decrease Expense



System z IBM Application Development

Application Reuse / Data Migration

CICS Interdependency Analyzer
CICS VSAM Transparency

Application / Performance Management

CICS Performance Analyzer
Application Performance Analyzer

Operational Efficiency

IBM Session Manager
CICS Batch Application Control
CICS OTTO

Resource Recovery

CICS VSAM Recovery

COBOL Modernization

Debug Tool Utilities Adv Funct
Migration Utility

Software Configuration Management

SCLM Advanced Edition
Rational ClearCase, ClearQuest

Test, Deploy, Manage Data Environment

Fault Analyzer
File Manager
File Export
Debug Tool Utilities Adv Funct
WDDz

CICS V2V

CICS Interdependency Analyzer
CICS Configuration Manager
CICS Performance Analyzer

Testing

Workload Simulator
Rational Performance Tester z/OS
Rational Functional Tester
Terminal Based Apps

Core COBOL, PL1, Assembler, C++, HP Java, DB2, IMS, CICS Applications

CICS Interdependency Analyzer

Understand Relationships in your CICS Environment



CICS Interdependency Analyzer

- **What does it do?**

- ▶ Real-time capture of CICS application calls (API)
- ▶ Query facility from both Windows / CICS / Batch
- ▶ Document application affinities to facility Dynamic Transaction Routing
- ▶ Identify application programs that are ThreadSafe / Open TCB
- ▶ Creates and updates CPSM affinities rules database

- **Benefits**

- ▶ Eliminate manual documentation of application systems
- ▶ Quickly identify application scope
- ▶ Verify the application code via call path tracing
- ▶ Automatically maintains CPSM rules
- ▶ Helps you lower the total cost of ownership of your zSeries platform



CICS Interdependency Analyzer for z/OS (CICS IA)

■ Key features

- ▶ Captures resource relationships
- ▶ Programs with potential affinities
- ▶ Run-time and batch reporting tool
- ▶ Relationship data loaded onto a DB2 database
- ▶ Query interface and sample queries provided for comprehensive analysis

■ CICS Support

- ▶ CICS Transaction Server for z/OS, V2 and V3
- ▶ CICS Transaction Server for OS/390 V1.3

New in CICS IA V2.1

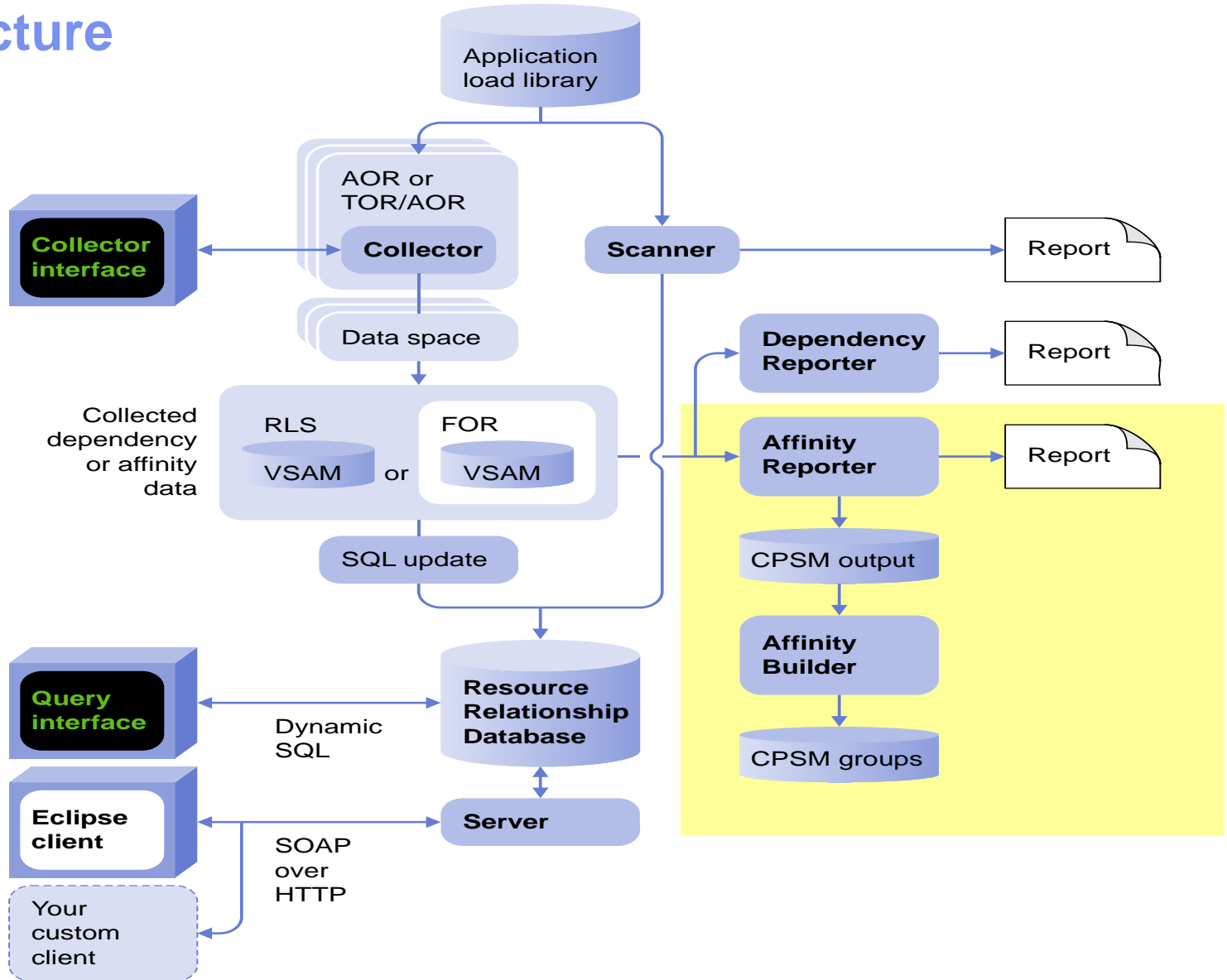
- CICS TS V3.2 toleration PTF
- Sample queries to highlight applications that are most sensitive to CICS version changes

Coming soon

- Powerful new Eclipse-based UI
- Sample queries to identify applications suitable for use as Web services
- Support for Natural 4GL
- Exploitation PTF for CICS TS V3.2
- DB2 UDB support



Architecture



CICS IA – Business Value

- **Understand active application inventory quickly and efficiently**
 - ▶ Understand cross-system applications and dependencies
 - ▶ Know the resource topology within a particular CICS region
 - ▶ Understand the where and how resources are used
 - ▶ Know the last time a particular resource was used

- **Maintain or enhance applications more quickly and efficiently**
 - ▶ Identify the scope of a change
 - ▶ What resources that are affected directly and indirectly
 - *Transactions, programs, data elements: files, queues, screens, ...*
 - ▶ What to change, what to build, what to test, what needs to be communicated to roles involved
 - ▶ Look across boundaries, including shared data



Use CICS IA to exploit CICS TS 3.x

Has every program been tested?

- ▶ Each program entry has a timestamp and region information
- ▶ Run queries to produce reports of testing by application
 - Queries can check for positive or negative results
- ▶ Easy sign-off of testing by AD managers

Are your programs threadsafe ?

- ▶ Run queries to see if your applications using shared resources
- ▶ Check to see which TCBs your applications are using

Are your programs LE Enabled ?

- ▶ Identifies whether your COBOL or PLI programs are LE enabled
- ▶ Reports on the version of your COBOL programs

Are you positioned to WEB enable your applications?

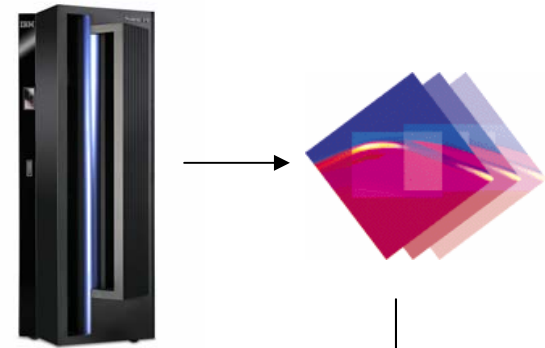
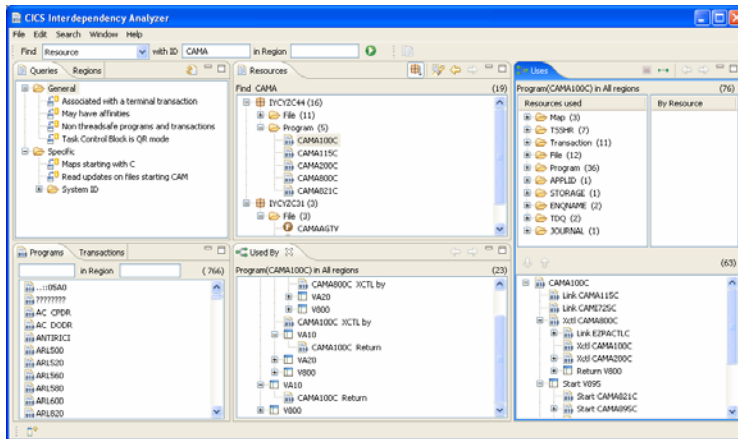
- ▶ Identify entry points to presentation logic
- ▶ Identify service flow components



CICS IA Explorer Architecture

CICS IA **Explorer** is a stand alone PC application that includes an Eclipse Rich Client platform and Java Runtime Environment. Saved queries and query results are stored locally on the PC

CICS IA **Collector** runs in regions and writes data about Interactions between Transactions, Programs and other resources to DB2 tables



JDBC type 4 driver accesses DB2 Tables on System z



Find Resource with ID * in Region

Queries Regions (12)

- IICYZC3A
- IICYZC3C
- IICYZC3D **Show Resources**
- IICYZC3E
- IICYZC3F
- IICYZC3G
- IICYZC3H
- IICYZC3I
- IICYZC3J
- IICYZC3K
- IICYZC3L
- IICYZC3M

Resources Resource for IICYZC3D (64)

- Transaction (3)
 - EQAC
 - VA10
 - V800
- STORAGE (1)
 - ADDR
- EXIT (30)
- TD (1)
- Program (19)
- File (4)
 - CAMASWIT
 - EQZLOGB
 - EQZTRCB
 - EQZTRFB
- ENQNAME (1)
- APPLID (1)
- Map (4)

Uses

Resources used	By Resource

↓ ↑

Programs Transactions (27)

CAM in Region

- CAMA100C
- CAMA115C
- CAMA200C
- CAMA800C
- CAMA821C
- CAMA884C
- CAMA895C
- CAMA900C
- CAMIMROC
- CAMI710C
- CAMI715C

Find Resource with ID in Region

Queries Regions

- General
 - Associated with a terminal transaction
 - Non threadsafe programs and transactions
 - Programs that may have affinities
 - Before migration to version 2.1 : 2007-
 - Task Control Block is QR mode
- Specific
 - Maps starting with C
 - Payroll Application
 - Read updates on files starting CAM
 - System ID
 - Home System IDs like T50%
 - Before Fix ABC1 : 2007-04-17 10:5
 - Baseline 2.1 : 2007-04-17 10:51:4

Programs Transactions

- CAM in Region (27)
- CAMA100C
 - CAMA115C
 - CAMA200C
 - CAMA800C
 - CAMA821C
 - CAMA884C
 - CAMA895C
 - CAMA900C
 - CAMTMROC

Resources

- Non threadsafe programs and transactions (54)
- IICYZC37 (10)
 - Transaction (5)
 - TSTS
 - TSTA
 - TSTH
 - TSTJ
 - TSTI
 - Program (5)
 - EMSTESTS
 - EMS1XT23
 - EMS2XT23
 - EMS3XT23
 - EMS4XT23
 - IICYZC44 (30)
 - Transaction (10)
 - Program (20)
 - CAMA800C
 - CAMA
 - EQZ1I
 - EQZ1INIT
 - EQZ1IPGV
 - EQZ1MON
 - EQZ1MONS
 - EQZ1RCV
 - EQZ1REL
 - EQZ1SET

- Used By
- Uses Resources
 - All regions
 - IICYZC3D
 - IICYZC44

Uses

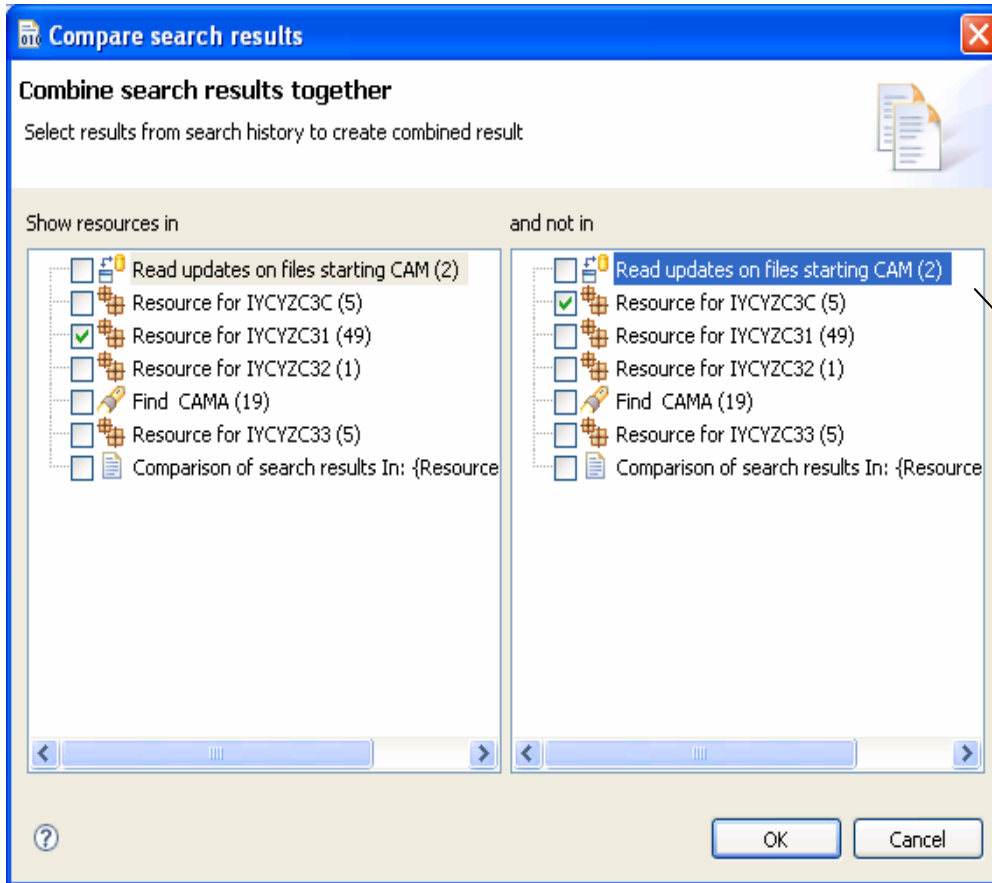
Program(CAMA800C) in All regions (79)

Resources used	By Resource
Transaction (11)	
Program (38)	
TSSHR (7)	
APPLID (2)	
Map (3)	
STORAGE (1)	
File (12)	
ENQNAME (2)	
TD (2)	
JOURNAL (1)	

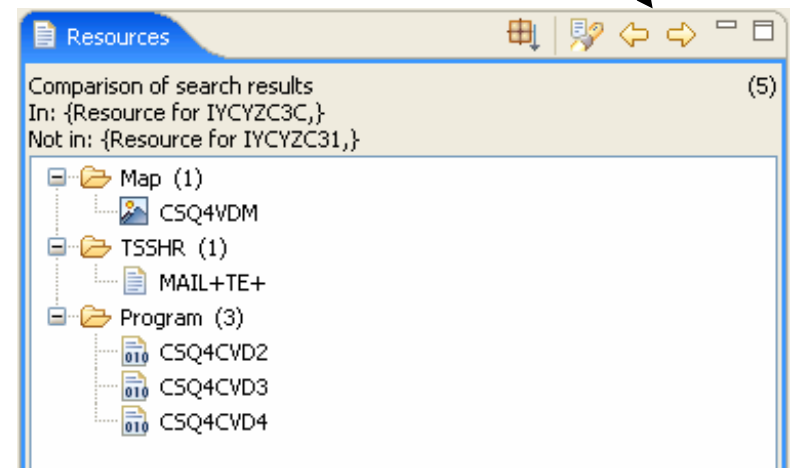
(63)

- CAMA800C
 - Link EZPACTLC
 - Link EZPSSMHC
 - Xctl CAMA100C
 - Link CAMA115C
 - Link CAMI725C
 - Xctl CAMA800C
 - Start V895
 - Return VA10
 - Xctl CAMA200C
 - Link CAMI725C
 - Link CAMTSWAN

Compare results to see intersections of resources

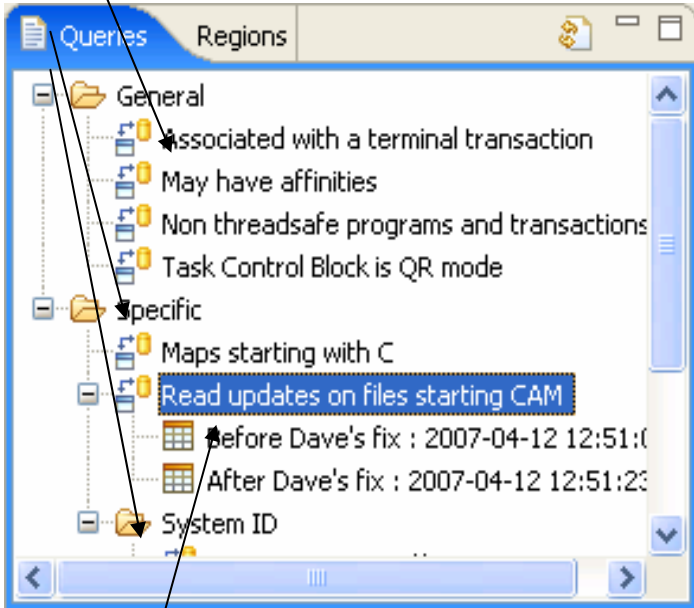


Result history can be navigated back and forward

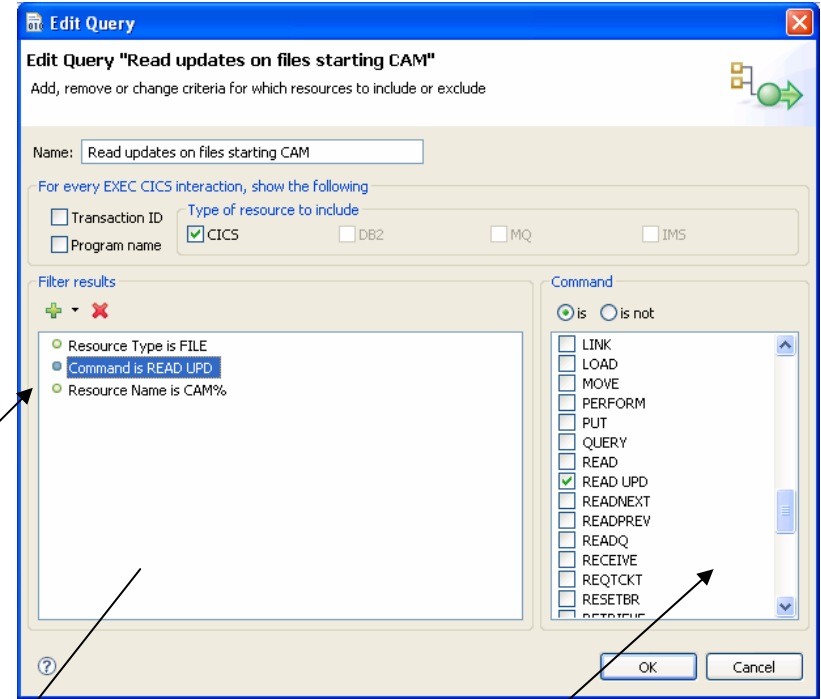


Create queries with complex expressions

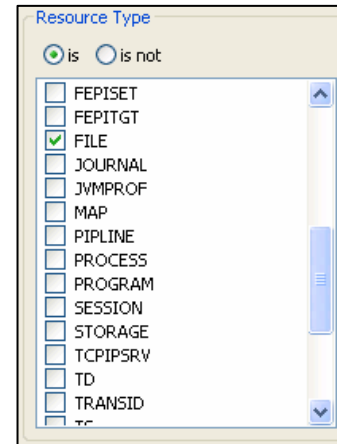
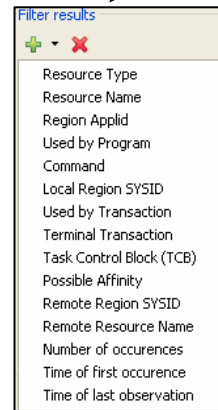
Queries can be organized into folders



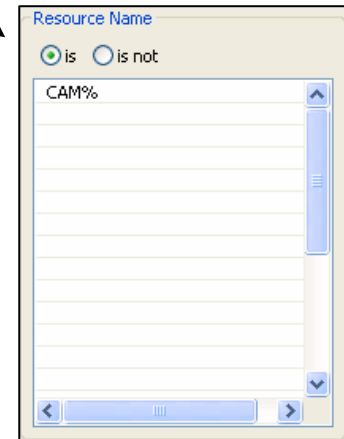
Results of queries can be saved for later comparison to see changes over time



Expression filters



Expression values



Summary – CICS Interdependency Analyzer

- Collect and store resource relationship information from running CICS environment
- Automate CPSM rules definitions with the affinity reporter and builder.
- Understand your applications for SOA enablement
- Extensive query capabilities (CICS interface, desktop IA Explorer, user defined queries)
- Exploit Features of CICS TS 3.x (threadsafe, LE enablement, and WEB enablement)
- Reduce time and effort for application maintenance activities
- Supports CICS TS, version 3, version 2, and 1.3
- Program product – 5697-J23

CICS Performance Analyzer

CICS Historical Analysis for solving today's business problems



CICS Performance Analyzer

- **What does it do?**

- ▶ ISPF Dialog to build, maintain and submit reports
- ▶ Extensive Tabular Reports and Graph Reports
- ▶ Create Historical Databases that include trend and capacity information
- ▶ Comprehensive Batch Reporting and Analysis from SMF data
- ▶ Online Statistics Reporting Capability

- **Benefits**

- ▶ Improves tuning and capacity planning analysis
- ▶ Improve transaction response time
- ▶ Provides detailed performance bottleneck analysis
- ▶ Uncovers trends leading to poor CICS performance or even outages
- ▶ Helps plan capacity for optimal performance



CICS Performance Analyzer for z/OS (CICS PA)

Key features

- ▶ Comprehensive Performance Reporting and Analysis for CICS
- ▶ Including DB2, WebSphere MQ, and MVS System Logger
- ▶ Extensive Tabular Reports and Extract Data Sets
- ▶ Historical Database (HDB)
- ▶ Trending and Capacity Planning
- ▶ ISPF Dialog to build, maintain, and submit reports and extracts
- ▶ Comprehensive reporting of CICS Statistics data
- ▶ Ease of Use

CICS Support

- ▶ CICS TS V2,V3, and V1.3

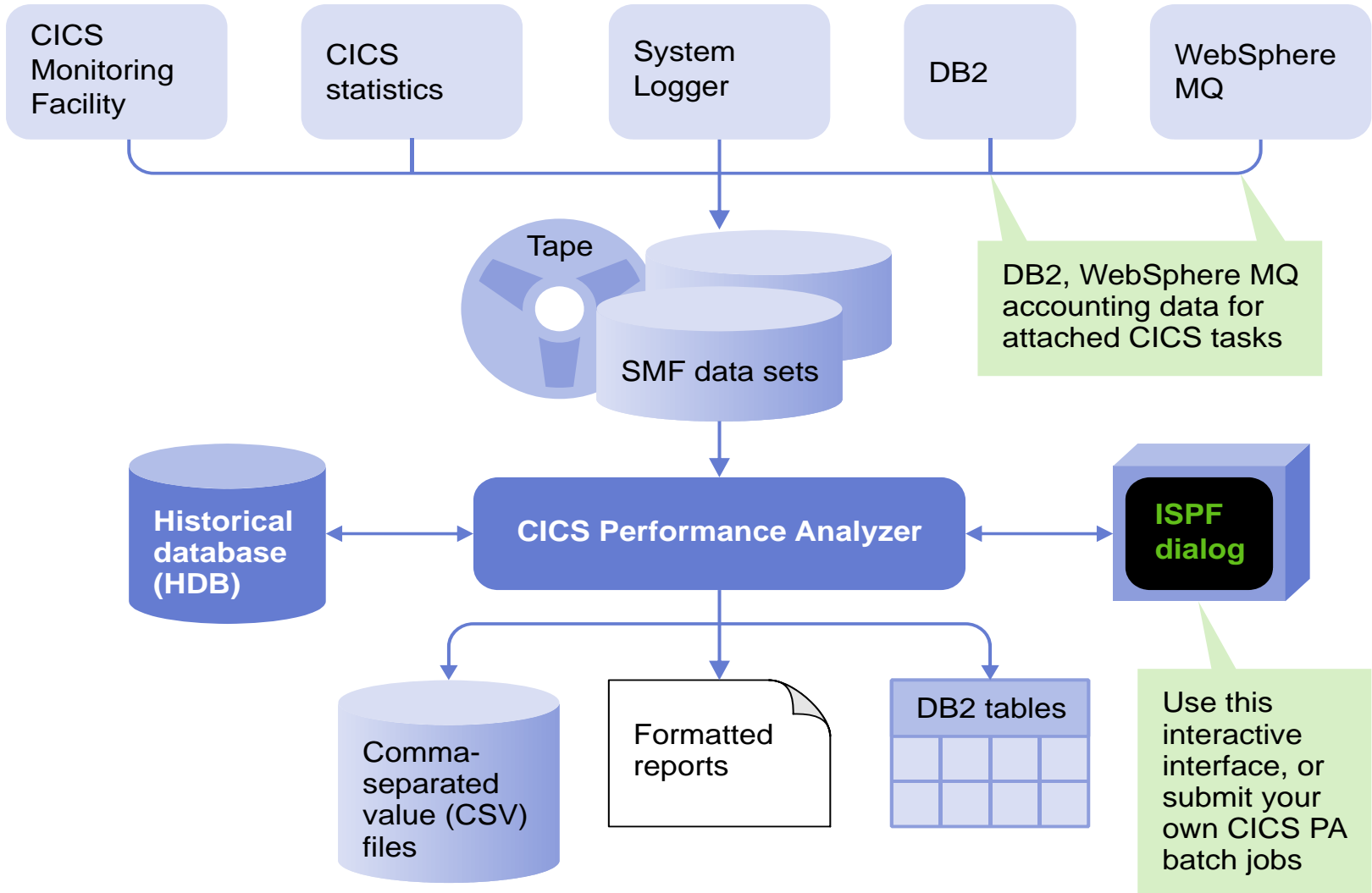
New in CICS PA V2.1

- **CICS TS V3.2 support including:**
 - **Compressed SMF type 110 records**
 - **Higher precision (12-byte) clock fields**
 - **New and updated statistics fields and records**
- **Extended integration with OMEGAMON XE for CICS**
- **New Transaction Profiling reports**
- **New and updated sample reports**
- **Historical Reporting using SupportPac CP12**

What SMF Data does CICS PA use?

- Comprehensive Performance Reporting and Analysis for CICS
- CICS Monitoring Facility (CMF) data (SMF 110)
- CICS Statistics data (SMF 110)
- CICS Server Statistics data (SMF 110)
- DB2 Accounting records (SMF 101)
- WebSphere MQ Accounting records (SMF 116)
- z/OS System Logger records (SMF 88)
- Tivoli OMEGAMON XE for CICS on z/OS (SMF 112)

Architecture

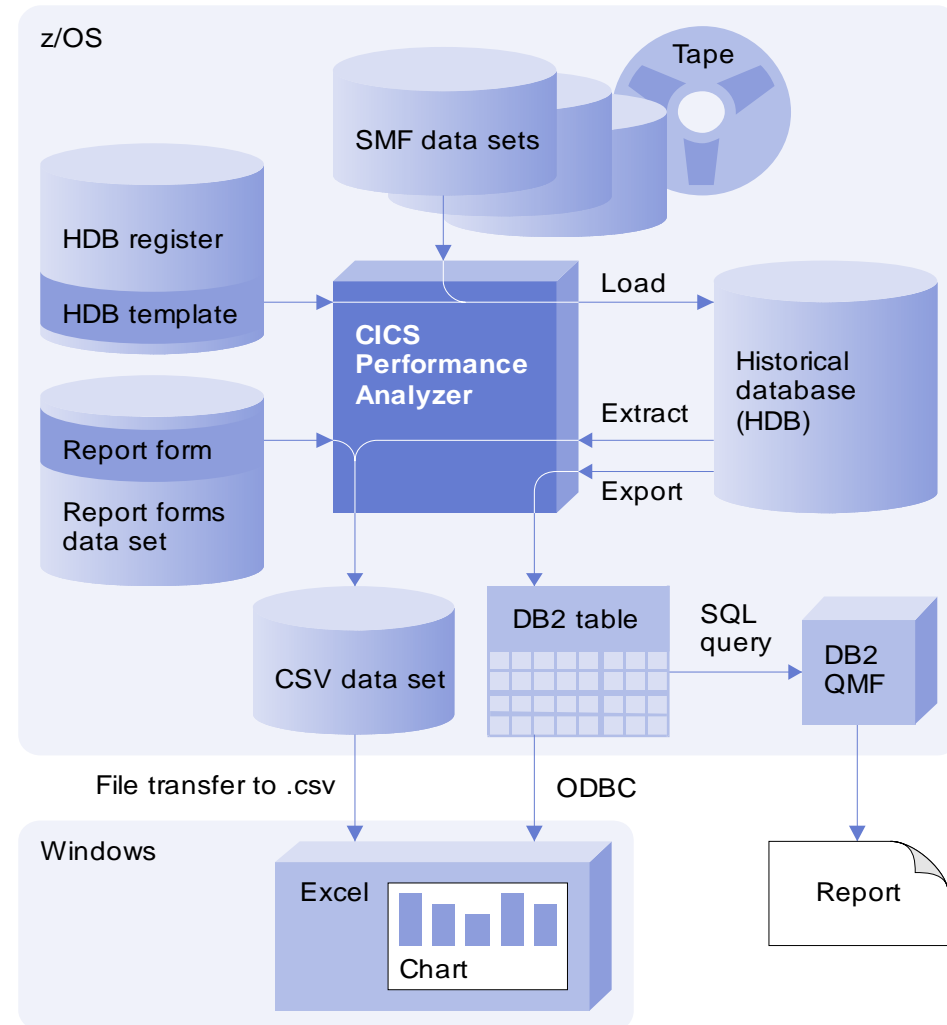


CICS Performance Analyzer – SupportPac CP12

Reporting using DB2 / Exporting data for use in PC based applications

HDB Reporting ...

- **Step-by-step procedure ...**
 - ▶ From SMF to HDB
 - ▶ From HDB to DB2 or CSV
- **Reporting Tools ...**
 - ▶ QMF and Excel
- **Example Scenarios**
 - ▶ Are we meeting service-level agreements?
 - ▶ Why is a transaction slow?
 - ▶ Tuning LSR buffer pools
- **Custom Reports**
- **Automating Tasks**



CICS PA - Business values

- **Plan capacity to reduce MIPS cost**
 - ▶ Trend analysis for capacity planning
- **Proactively analyze performance trends to reduce down time and increase customer satisfaction**
 - ▶ Ensure quick response to performance issues identified by an online monitor
- **Reduce cost of outages**
 - ▶ Enables performance reviews before applications go into production
 - ▶ Identification of usage trends leading to reduced CICS performance or even outages
- **Reduce risk of missing service level commitments**
- **Reduce time and cost of managing system performance and availability**
 - ▶ CICS PA also complements the enterprise-wide historical performance capabilities of IBM Tivoli ® Decision Support for z/OS

CICS PA - Complements Omegamon XE or any online monitor

OMEGAMON XE for CICS Online Monitoring

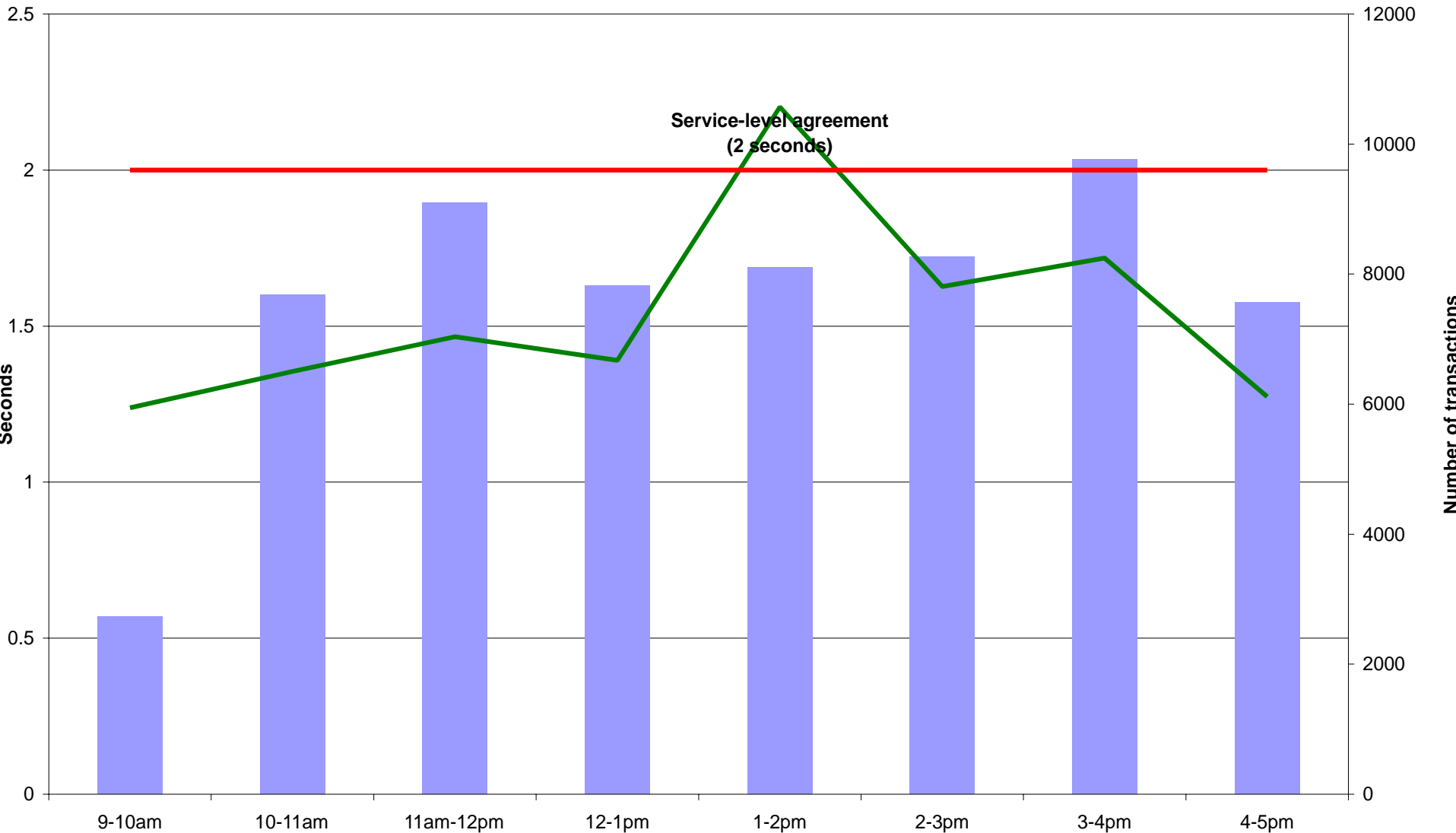
- Provides real-time performance management, monitoring and troubleshooting for CICS
- Helps detect performance problems early, identify cause and avoid problems

CICS Performance Analyzer for 'Offline' Analysis

- Provides ongoing system management and measurement reports on all aspects of CICS application performance
- Enables deep-dive CICS performance analysis and understanding of usage trends
- Aids capacity planning and tuning
- Helps quickly identify and eliminate trends leading to online performance problems
- Complements IBM online monitors for a complete solution
- IBM's statement of direction for CICS historical analysis

ORDR transaction: Wednesday, September 27, 2006

Transactions Average response time SLA



Cross-System Work Report – Default ...

V1R2M0														CICS Performance Analyzer		
														Cross-System Work		
CROS0001 Printed at 12:09:28 1/24/2002 Data from 11:10:51 2/04/1999 to 08:10:28 2/16/1999														Page	3	
Tran	Userid	SC	TranType	Term	LUName	Request Type	Program	Fcty T/Name	Conn Name	NETName	UOW Seq	APPLID	Task T	R Stop Time	Response Time	A B
ABRW	BRENNER	TP	U	S23D	IGCS23D	AP:	DFHÚABRW	T/S23D		GBIBMIYA.IGCS23D	1	IYK2Z1V1	61	T	11:13:20.275	.0080
CMSI	CBAKER	TO	UM	R11	IYK2Z1V1	FS:F---	DFHMIRS	T/R11	CJB1	GBIBMIYA.IGCS23D	1	IYK2Z1V3	57	T	11:13:20.274	.0044
ABRW	BRENNER	TP	U	S23D	IGCS23D	AP:	DFHÚABRW	T/S23D		GBIBMIYA.IGCS23D	1	IYK2Z1V1	62	T	11:13:21.332	.0064
CMSI	CBAKER	TO	UM	R11	IYK2Z1V1	FS:F---	DFHMIRS	T/R11	CJB1	GBIBMIYA.IGCS23D	1	IYK2Z1V3	58	T	11:13:21.331	.0039
CEDA	BRENNER	TO	U	S23D	IGCS23D	AP:	DFHEDAP	T/S23D		GBIBMIYA.IGCS23D	3	IYK2Z1V1	72	T	11:16:28.284	1.1025
CEDA	BRENNER	TO	U	S23D	IGCS23D	AP:	DFHEDAP	T/S23D		GBIBMIYA.IGCS23D	1	IYK2Z1V1	72	C	11:16:27.181	3.0046
CEDA	BRENNER	TO	U	S23D	IGCS23D	AP:	DFHEDAP	T/S23D		GBIBMIYA.IGCS23D	1	IYK2Z1V1	72	C	11:16:24.177	2.2127
CEDA	BRENNER	TO	U	S23D	IGCS23D	AP:	DFHEDAP	T/S23D		GBIBMIYA.IGCS23D	1	IYK2Z1V1	72	C	11:16:21.964	46.5125
CEDA	BRENNER	TO	U	S23D	IGCS23D	AP:	DFHEDAP	T/S23D		GBIBMIYA.IGCS23D	1	IYK2Z1V1	72	C	11:15:35.451	.6794
CEMT	BRENNER	TO	U	S23D	IGCS23D	AP:	DFHEMTP	T/S23D		GBIBMIYA.IGCS23D	1	IYK2Z1V1	140	T	11:21:24.062	51.3442
CEMT	BRENNER	TO	U	S23D	IGCS23D	AP:	DFHEMTP	T/S23D		GBIBMIYA.IGCS23D	1	IYK2Z1V1	140	C	11:20:32.718	8.3481
CEMT	BRENNER	TO	U	S23D	IGCS23D	AP:	DFHEMTP	T/S23D		GBIBMIYA.IGCS23D	1	IYK2Z1V1	140	C	11:20:24.370	.0042
CEMT	BRENNER	TO	U	S23D	IGCS23D	AP:	DFHEMTP	T/S23D		GBIBMIYA.IGCS23D	1	IYK2Z1V1	174	T	11:21:28.662	1.1930
CEMT	BRENNER	TO	U	S23D	IGCS23D	AP:	DFHEMTP	T/S23D		GBIBMIYA.IGCS23D	1	IYK2Z1V1	174	C	11:21:27.469	.0041
RMST	BRENNER	TO	U	S23D	IGCS23D	TR:CJB3		T/S23D		GBIBMIYA.IGCS23D	1	IYK2Z1V1	178	T	11:22:38.447	48.9210
STAT	CBAKER	TO	U	R11	IYK2Z1V1	AP:	DFH0STAT	S/S23D	CJB1	GBIBMIYA.IGCS23D	1	IYK2Z1V3	349	T	11:22:38.433	66.7720
RMST	BRENNER	TO	U	S23D	IGCS23D	TR:CJB3		T/S23D		GBIBMIYA.IGCS23D	1	IYK2Z1V1	178	C	11:21:49.526	10.0524
RMST	BRENNER	TO	U	S23D	IGCS23D	TR:CJB3		T/S23D		GBIBMIYA.IGCS23D	1	IYK2Z1V1	178	C	11:21:39.473	7.8027
RMST	BRENNER	TO	U	S23D	IGCS23D	TR:CJB3		T/S23D		GBIBMIYA.IGCS23D	1	IYK2Z1V1	178	C	11:21:31.671	.0110
STAT	BRENNER	TO	U	S23D	IGCS23D	AP:	DFH0STAT	T/S23D		GBIBMIYA.IGCS23D	1	IYK2Z1V1	195	T	11:22:52.663	2.0203
STAT	BRENNER	TO	U	S23D	IGCS23D	AP:	DFH0STAT	T/S23D		GBIBMIYA.IGCS23D	1	IYK2Z1V1	195	C	11:22:50.642	8.9745



DB2 Reports – List

V1R2M0 CICS Performance Analyzer
DB2 - List

DB2R0001 Printed at 10:14:46 2/13/2002 Data from 13:31:17 1/24/2002 to 13:32:08 1/24/2002 Page 1

Tran/SSID	Userid/Authid	Program/Planname	APPLID	UOW Task	R Seq	T Term	LUName	..DB2 Wait Time.. Connect	DB2 Thread	User CPU ReqCnt	Time	Start Time	Stop Time	Response Time	A B
WROS	RAIMAN	CRWWPPOS	STM4IRA1	34695	1	T	<ADQ STM4IRT1	.0000	.0000	18	.3112	13:31:23.053	13:31:34.349	11.2956	

CH1G STM4IRA1 CRWWPPOS STM4IRA1 34695 Thread Identification ID=ENTRWROS0037 NETName=USIBMSY.LE000081 UOWID=16372A6C7E14
Begin Time: 13:31:23.056 1/24/02 End Time: 13:31:35.378 1/24/02

CMF performance data

Class1: Thread Time	Elapsed= 12.3218	CPU= .310480
Class2: In-DB2 Time	Elapsed= 11.2359	CPU= .309914
Class3: Suspend Time	Total = 6.5988	I/O= 2.3726 Lock/Latch= 4.2262 Other= .0000
Buffer Manager Summary	GtPgRq= 8120	SyPgUp= 8
Locking Summary	Suspnd= 11	DeadLk= 0 TmeOut= 0 MxPgLk= 1
SQL DML Query/Update	Sel= 2	Ins= 0 Upd= 0 Del= 0
SQL DML 'Other'	Des= 0	Pre= 0 Ope= 3 Fet= 13 Clo= 0

WRNO	RAIMAN	CRWWPPNO	STM4IRA1	34869	1	T	<ACY STM4IRT1	.0000	.0000	67	.0114	13:31:38.853	13:31:45.875	7.0220	
------	--------	----------	----------	-------	---	---	---------------	-------	-------	----	-------	--------------	--------------	--------	--

CH1G STM4IRA1 CRWWPPNO STM4IRA1 34869 Thread Identification ID=ENTRWRO0051 NETName=USIBMSY.LE000081 UOWID=1637397E8927
Begin Time: 13:31:38.854 1/24/02 End Time: 13:31:45.808 1/24/02

Associated DB2 Accounting data

Class1: Thread Time	Elapsed= 6.9534	CPU= .010208
Class2: In-DB2 Time	Elapsed= 6.8909	CPU= .008283
Class3: Suspend Time	Total = 6.3783	I/O= .0000 Lock/Latch= 6.3783 Other= .0000
Buffer Manager Summary	GtPgRq= 173	SyPgUp= 36
Locking Summary	Suspnd= 2	DeadLk= 0 TmeOut= 0 MxPgLk= 15
SQL DML Query/Update	Sel= 1	Ins= 12 Upd= 11 Del= 0
SQL DML 'Other'	Des= 0	Pre= 0 Ope= 12 Fet= 21 Clo= 10

Summary - CICS Performance Analyzer

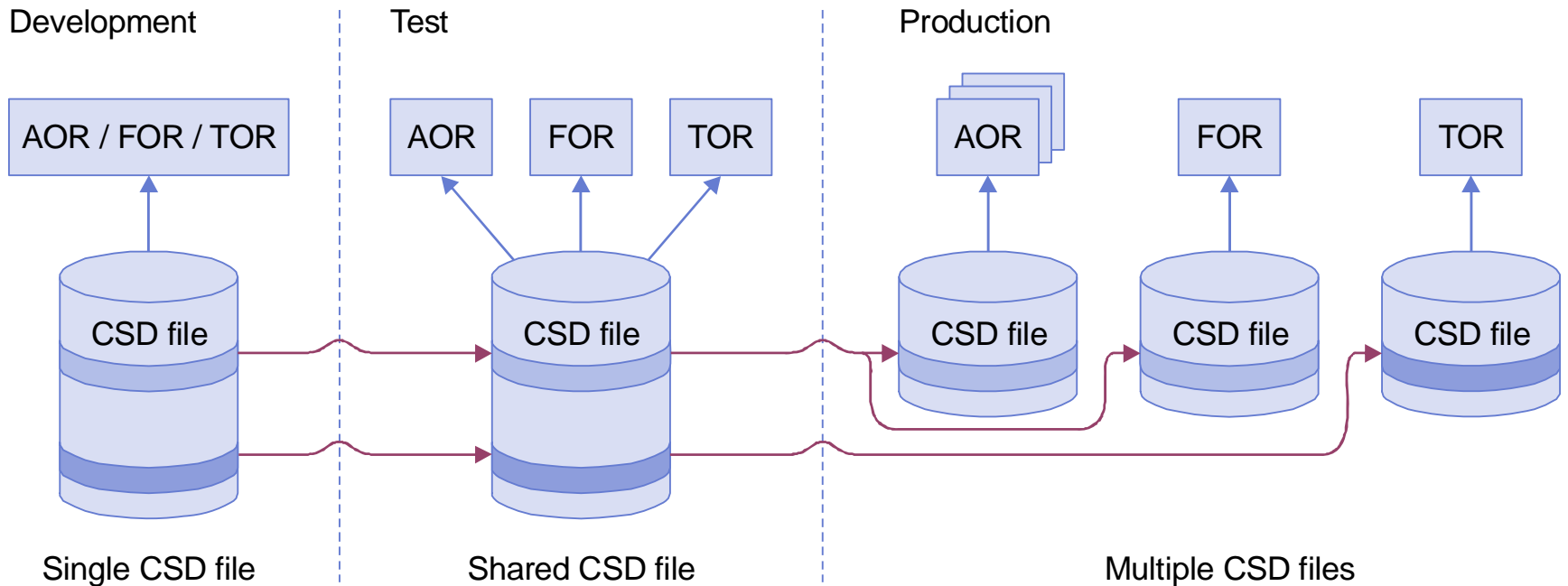
- Analyzes SMF records to produce a wide range of reports and extracts
- Extensive Tabular Reports and Extract Data Sets
- Historical Database
 - ▶ Trending and Capacity Planning
- ISPF Dialog to build, maintain, and submit reports and extracts
- Supports CICS TS, Version 3, Version 2, and 1.3
- Program Product – 5697-N40

CICS Configuration Manager

A single point of control for CICS resource definitions across your enterprise



Management of CICS Resource Definitions



CICS Configuration Manager

- **What does it do?**

- ▶ Simplifies and automates the management of your CICS resources in both CSD and CPSM BAS environments
- ▶ Enables migration of CICS resources from different environments under a structured change control process
- ▶ Tracks resource history as well as provides back-out to previous change level
- ▶ Provides detailed reports of CICS resources

- **Benefits**

- ▶ Helps reduce errors and abends related to incorrect resource changes
- ▶ Minimizes manual work by operators and system programmers
- ▶ Provides complete audit history of all CICS resource modifications
- ▶ Helps you lower the total cost of ownership of your zSeries platform



CICS Configuration Manager for z/OS (CICS CM)

■ Key features

- ▶ Create, update, delete, copy, replicate CICS resource definitions
- ▶ Change management through the life-cycle stages, e.g. development, test, production
- ▶ Create customized reports to identify redundant definitions, show resource relationships and change management history
- ▶ Audit, back-out and change authorization capabilities

■ CICS Support

- ▶ CICS Transaction Server for z/OS, V2 and V3
- ▶ CICS Transaction Server for OS/390 V1.3

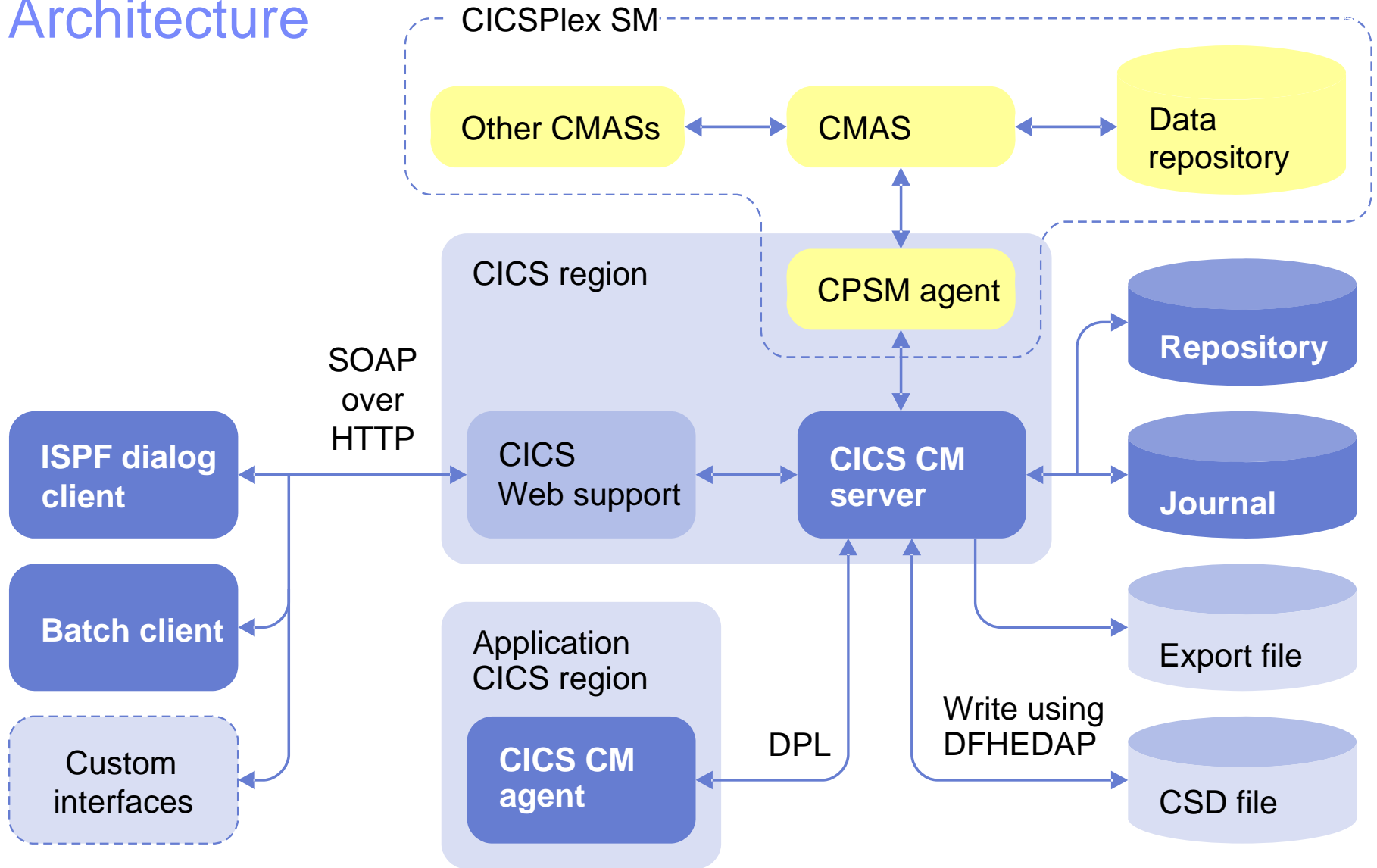
New in CICS CM V1.2

- CICS TS V3.2 support PTF
- Migration of resource definitions between partitioned environments
- Integration with change management solutions
- Mixed RLS and non-RLS CSDs

Coming soon

- Improved CSD clean-up capabilities.
- Identification of resources updated outside of CICS CM
- Improved identification of orphaned resources
- Usability and reporting enhancements

Architecture



Business Values

Reduce CICS system administration overhead

- ▶ Single point of control (access) to all CICS resources
- ▶ Share responsibility between technical & application groups
- ▶ Extensive resource analysis capability (compare, search, history)
- ▶ Audit Trail of all resource modifications

Improve Speed of Implementation

- ▶ Associate resource modifications to AD change package
- ▶ Build and reuse migration schemes
- ▶ Use transformation rules to modify attributes
- ▶ Automate repetitive change activities

Reduce the chance of outages

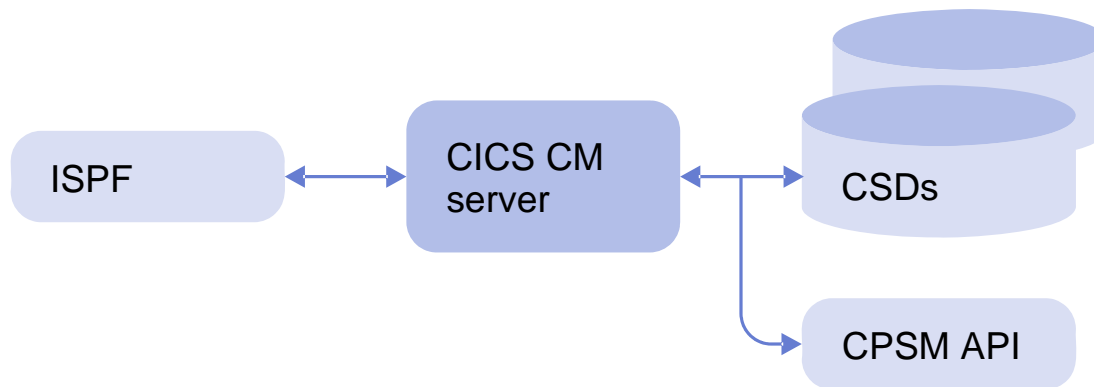
- ▶ Enforce naming standards
- ▶ Less manual intervention
- ▶ Signoff for migrations
- ▶ Backout facility



CICS CM Services

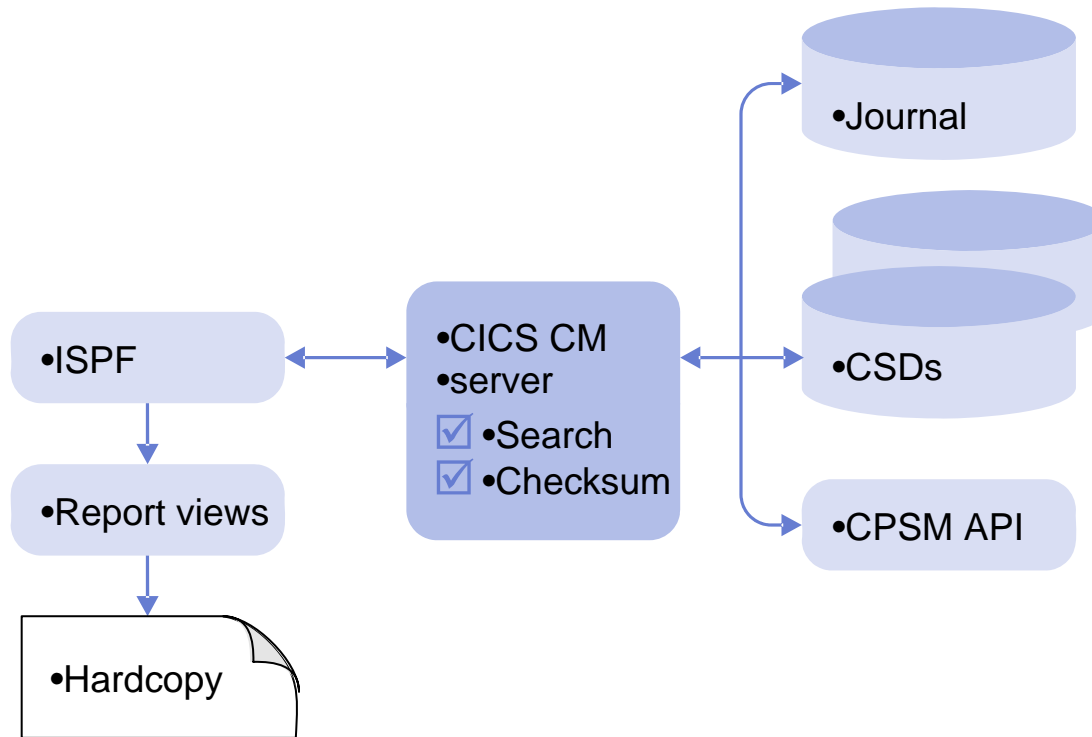
- **Centralized definition management**
- **Reporting and analysis**
- **Change control enablement**

CICS CM Services: Centralized Definition Management



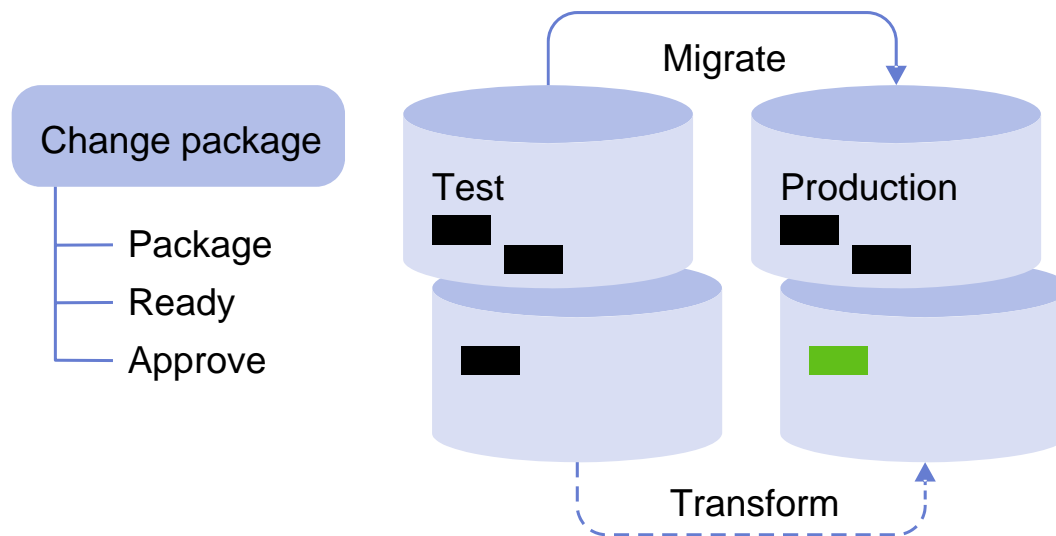
- **Native repositories**
- **CSDs or CICSplex SM BAS**
- **CICS TS 1.3 to 3.1**
- **Access when CICS is down**

CICS CM Services: Reporting & Analysis



- **Resource histories**
- **Audit reporting**
- **Comparative analysis**
- **Search analysis**
- **Cross CSD/CPSM views**

CICS CM Services: Change Control Enablement



- **Change packages**
- **Ready, approve**
- **Detection of compromise**
- **Migration schemes**
- **Transformation rules**
- **Back-out capability**
- **SCM integration exits**

Summary – CICS Configuration Manager

- Facilitate responsibility sharing between CICS sys-progs, application development and system administration
- Central point of control of CICS resource definitions
- End-to-end accountability and control
- Automate application-definition delivery and deployment
- Integrate change management and CICS administration strategies
- Reduce CICS system administration overheads
- Supports CICS TS, Version 3, Version 2, and 1.3
- Program Product – 5697-I78



CICS VSAM Recovery

Risk Management for Your Mission Critical VSAM Data



CICS VSAM Recovery

■ What does it do?

- ▶ Recovers lost or damaged VSAM data
- ▶ Recovers updates made to data by CICS and/or batch applications
- ▶ Provides assistance and processes for VSAM Disaster Recovery
- ▶ Automates VSAM backup and restore processes
- ▶ Provides intelligent decision automation for certain VSAM error conditions
- ▶ Fully supports log records written by Transactional VSAM (DFSMStvs)

Benefits

- ▶ Automates recovery for physically or logically damaged or lost VSAM files
- ▶ Quickens recovery from batch window errors
- ▶ Reduces overall VSAM recovery time
- ▶ Provides database type recovery for your VSAM files
- ▶ Reduce outages for certain VSAM errors



CICS VSAM Recovery for z/OS (CICS VR)

▪ Key features

- ▶ Automated recovery
- ▶ Extensive functionality and authorization management the from ISPF panel interface
- ▶ Provide test-only forward recovery and backout
- ▶ Disaster recovery report
- ▶ Export and Import commands
- ▶ Change accumulation
- ▶ Batch support including logging
- ▶ NOTIFY support for IBM and non-IBM backups

▪ CICS Support

- ▶ CICS Transaction Server for z/OS, V2 and V3
- ▶ CICS Transaction Server for OS/390 V1.3

New in CICS VR V4.2

• CICS TS V3.2 support

- **Extended addressability Entry Sequenced Data Sets (ESDSs)**

- **Backout failure detection operates in a thread-safe mode**

- **Integration with external backup products, including IBM ABARS**

- **Enhanced logging support**

Coming Soon

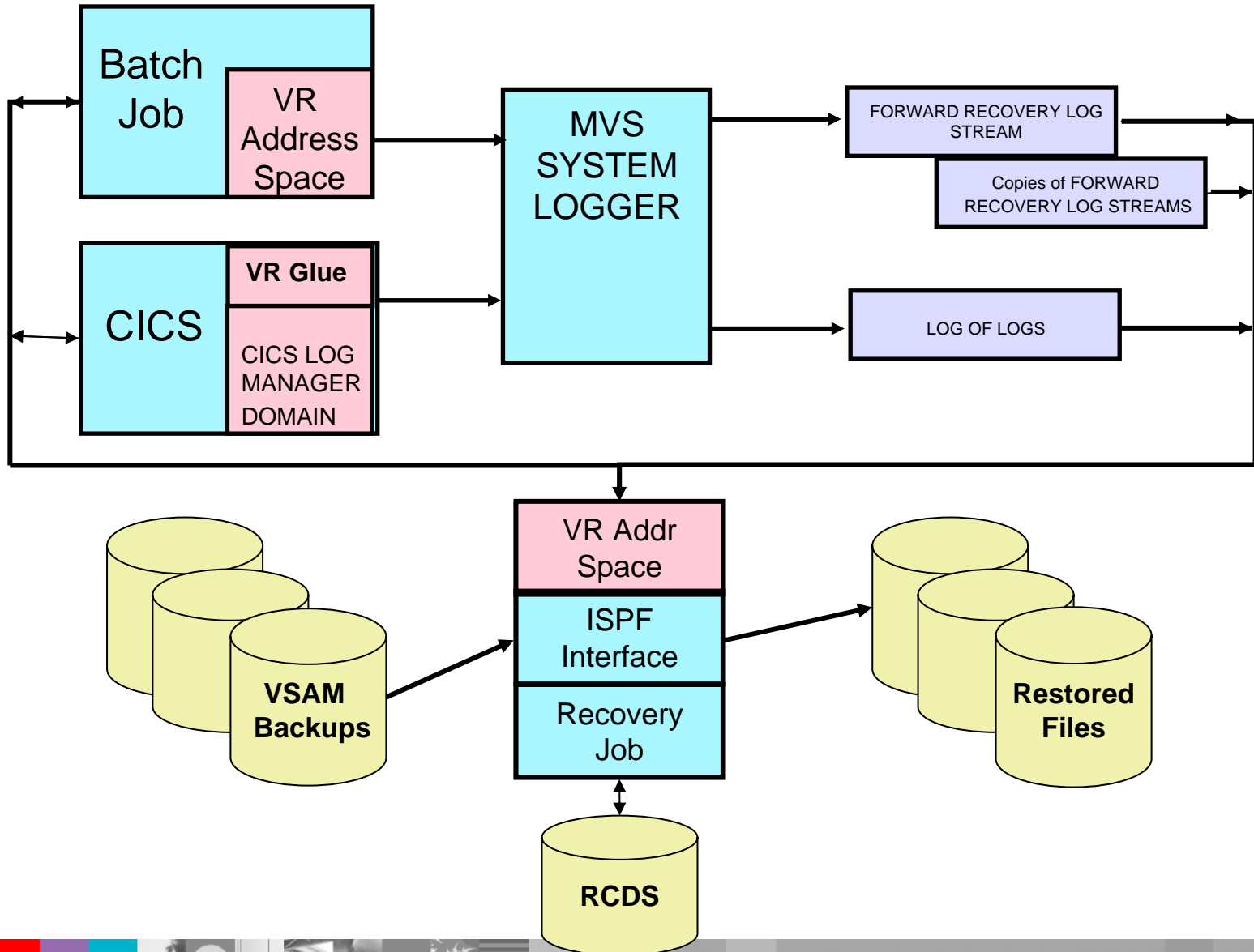
- ***Additional functionality for the ISPF dialog***

- ***Automation enhancements***

- ***Extend support for non IBM backups***



Architecture



CICS VR – Business Value

- Insurance protection for your mission critical VSAM files
- Use familiar database recovery techniques reducing the learning curve for implementation
- Provide consistency for all VSAM processing types
- Reduce cost of operator intervention and on call support with automation of VSAM file error detection
 - ▶ Detect VSAM errors and take corrective action
- Potential savings in the batch cycle by reducing number of backups
- Assistance at Disaster Recovery with exported RCDS and quicker automated recovery
- Reduce human errors with automated recovery processes

CICSVR and Disaster recovery

■ CICSVR disaster recovery utilities

- ▶ Log stream copy
 - Create sequential data set copy of a forward recovery log stream
- ▶ RCDS import/export
 - Create sequential data set that contains essential recovery information
 - Includes information related to logstreams, backups and change accumulation data sets
- ▶ Remote site change accumulation
 - Create change accumulation data sets for use at a remote recovery site
 - Will accumulate latest unread portion of forward recovery log stream
- ▶ Shadow recovery
 - Maintain updated copies of VSAM spheres at a remote recovery site
 - Batch job set up once and submitted during regular intervals



CICSVR Summary

- Helps automate recovery in the following scenarios
 - ▶ Recover physically damaged or lost VSAM files at the primary site
 - ▶ Recover VSAM files in a disaster recovery scenario (at a remote site)
 - ▶ “Logically” recover VSAM files from particular updates
 - ▶ Remove updates made by failed batch jobs steps
- Helps quicken recovery from batch window errors
- Eliminates possible user errors with the ISPF panel interface
- Reduces recovery time
- Recovers from updates made by CICS, batch, or both
- Supports CICS TS, Version 3, Version 2, and 1.3
- Program Product - 5655-P30

CICS VSAM Transparency

Exploit the Value of Your Business Data that Resides on VSAM



CICS VSAM Transparency

- **What does it do?**

- ▶ Move your data from VSAM to DB2 without application program changes
- ▶ Eliminates VSAM files
- ▶ Clean data via utilities to eliminate bad data “surprises”
- ▶ Re-engineer data to increase corporate value

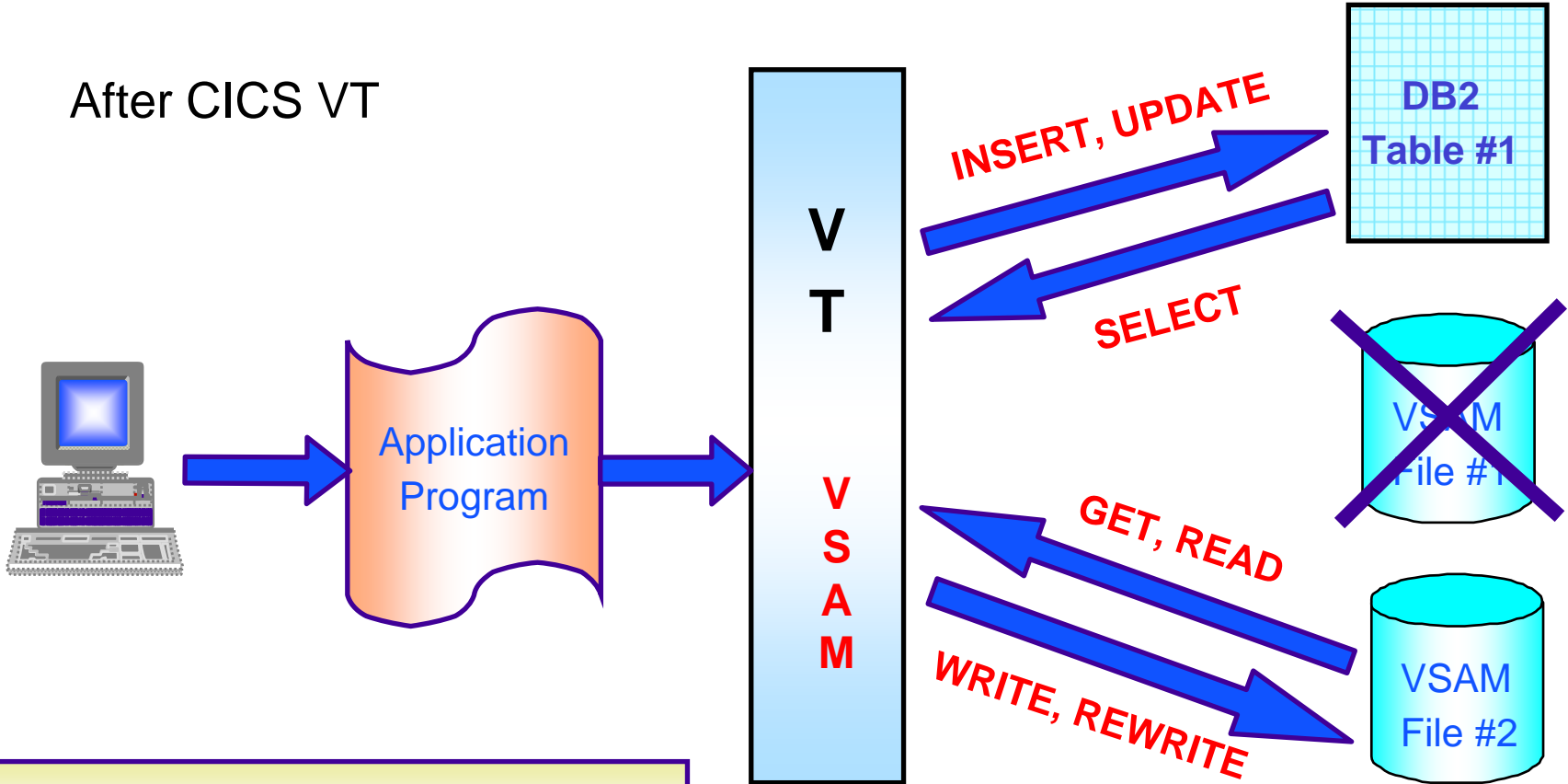
- **Benefits**

- ▶ Low Risk migration strategy
- ▶ Fast path to move VSAM data to DB2
- ▶ Modify application programs at a controlled pace
- ▶ Helps you lower the total cost of ownership of your zSeries platform



WHAT EXACTLY IS CICS VT?

After CICS VT



Application programs unchanged

CICS VSAM Transparency for z/OS (CICS VT)

■ Key features

- ▶ Migrate VSAM files to DB2
 - without changing application programs
 - single copy of the data
- ▶ CICS programs access data via GLUE/TRUE access
- ▶ Batch programs access DB2 via CICS VT
- ▶ Cleansing migration utilities
- ▶ Add SQL to existing programs
- ▶ No additional region / STC required
- ▶ Lower risk migration strategy

■ CICS Support

- ▶ CICS Transaction Server for z/OS, V2 and V3
- ▶ CICS Transaction Server for OS/390 V1.3

New in CICS VT V1.2

- **CICS TS V3.2 support without modification**
- **CICS TS V3.2 threadsafe File Control API performance benefits**
- **Dual Mode Facility assists with testing of migrated data**
- **Automated Mapping Facility now supports PL/I and Assembler**
- **Re-entrant SQL driver modules**



CICS Batch Application Control

Reduce the Impact of Your Batch Window



CICS Batch Application Control

- **What does it do?**

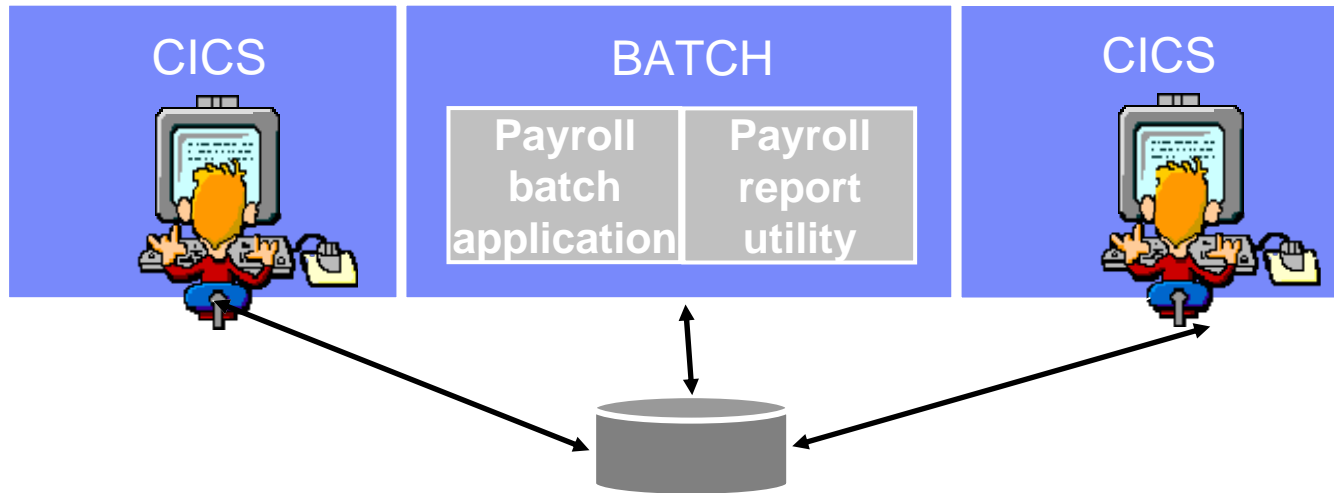
- ▶ Simplifies and automates the transitions between batch and CICS application access to the same resources
- ▶ Enables a batch-job step to change the state of relevant CICS resources
- ▶ Tracks resource state change requests across CICS systems and batch streams and helps ensure each resource is in its correct state when CICS regions start

- **Benefits**

- ▶ Helps reduce errors and abends related to batch processing
- ▶ Minimizes manual interventions by operators and system programmers
- ▶ Moves your CICS applications closer to 24x7 availability
- ▶ Helps you lower the total cost of ownership of your zSeries platform



Need for improved resource control



- **Objective**
 - ▶ Need a way to quickly change resource state to prevent
 - CICS from allocating a resource that is being used by batch
 - Batch from allocating a resource that is being used by CICS
- **Incorrect or inefficient resource control could cause**
 - ▶ Failure of applications
 - ▶ Incorrect changes to data
 - ▶ Incorrect results from application processing
 - ▶ Reduced online CICS availability

CICS Batch Application Control for z/OS (CBAC)

▪ Key features

- ▶ Enables batch to change the state CICS resources
- ▶ Audit history of change requests
- ▶ Ensures same state at CICS region start
- ▶ Powerful “group” feature
 - Set CICS region name at the system level
 - Change all resources associated with an application

▪ CICS Support

- ▶ CICS Transaction Server for z/OS, V2 and V3
- ▶ CICS Transaction Server for OS/390 V1.3

New in CICS BAC V1.1.1

- **CICS TS V3.2 support PTF**
- **Security enhancements**
- **ISPF-based administration interface**

CICS Online Transmission Time Optimizer

Reducing Response Time



ON DEMAND BUSINESS™

CICS Online Transmission Time Optimizer for z/OS

■ Key features

- ▶ Identifies and removes repetitive data
- ▶ Compresses 3270 data streams
- ▶ Only changed data sent to the terminals
- ▶ Optimizes messages to increase printer speed
- ▶ Include/Exclude of terminals and transactions
- ▶ Optional exit to change the data stream
- ▶ Compression status monitoring

■ CICS Support

- ▶ CICS Transaction Server for z/OS, V2 and V3
- ▶ CICS Transaction Server for OS/390 V1.3

New in CICS OTTO V1.2

- **CICS TS V3.2 support without modification**
- **Improved compression status management**
- **Improvements in viewing trace data**
- **New system options to exclude transactions and terminals from optimization more easily**
- **Additional end-user help**
- **Improved documentation**



IBM Session Manager

Improving User Access



ON DEMAND BUSINESS™

IBM Session Manager for z/OS (Session Manager)

■ Key features

- ▶ Access multiple z/OS systems from a single 3270 terminal - SNA and TCP/IP
- ▶ Session recovery across the Sysplex
- ▶ Centralized administration
- ▶ Provided Rexx like scripting language
 - Log-off procedures
 - Security checking
 - Audit logging
- ▶ Benefits to helpdesk and operations
 - Spy function
 - Broadcast messages
- ▶ Benefits in training remote staff – Demo function

New in Session Manager V1.3

- **CICS TS V3.2 support without modification**
- **Workload balancing and shared configurations**
- **User customization**
- **System management menu**
- **Improvements in Online Administration usability**

Coming soon in Session Manager V2.1

- **High application availability and near-continuous operations in a Parallel Sysplex environment**



CICS Tools Summary



CICS Tools and your business challenges

- **Sarbanes-Oxley**
- **Budgets**
- **Disaster recovery and other outages**
- **Performance and Tuning**
- **Service Level Agreements**
- **Service Oriented Architecture (SOA)**
- **Web Access to CICS**



Why CICS Tools from IBM?

- **Increase** CICS systems efficiency and flexibility
- **Improve** system integrity
- **Control** your MIPS cost
- **Leverage** your investment in the latest releases of CICS TS
- **Minimize** your time to exploitation
 - ▶ easy to learn and use
 - ▶ migration support is available

IBM offers a comprehensive portfolio of zSeries tools to help IBM customers significantly reduce the total cost of ownership of zSeries platform



For more information

Tools WEB sites

- ▶ CICS tools, including library: www.ibm.com/cics/tools
- ▶ WebSphere zSeries tools:
www.ibm.com/software/websphere/zadportal
- ▶ Try CICS tools for free for 60 days
www.ibm.com/software/os/zseries/trials/cicstools

Support Pacs

- ▶ CP12: CICS PA Historical Database Reporting
www.ibm.com/support/docview.wss?uid=swg24011321
- ▶ CA5D: CICS IA V2.1 – New Explorer (Client Replacement)
<http://www.ibm.com/support/docview.wss?uid=swg24015901>

Business Article

- ▶ The Wall Street Journal, June 24, 2007. *The Dinosaurs That Won't Die*: <http://blogs.wsj.com/biztech/2007/07/24/the-dinosaurs-that-wont-die/>

Program numbers (licence):

5697-J23: CICS Interdependency Analyzer
5697-N40: CICS Performance Analyzer
5697-I78: CICS Configuration Manager
5655-P30: CICS VSAM Recovery
5697-I76: CICS VSAM Transparency
5697-I94: CICS Batch Application Control
5655-K01: IBM Session Manager
5655-I05: CICS OTTO

Bibliography

CICS Interdependency Analyzer

- ▶ CICS Interdependency Analyzer for z/OS V2.1 User Guide and Reference SC34-6685
- ▶ CICS Interdependency Analyzer for z/OS V2.1 Program Directory GI10-2598
- ▶ DB2 Application Programming and SQL Guide, SC26-4377
- ▶ DB2 Administration Guide, SC26-4374
- ▶ Redbook: CICS Interdependency Analyzer, SG24 -6458-00
- ▶ Redbook: Migration Considerations for CICS Using CICS CM, CICS PA, and CICS IA, SG24-7294-00
- ▶ White paper: CICS Interdependency Analyzer for z/OS V1.3 - Discovering resource relationships and affinities within your CICS environment, G224-9129



Bibliography (continued)

CICS Performance Analyzer

- ▶ CICS Performance Analyzer for z/OS V2.1 User's Guide SC34-6799
- ▶ CICS Performance Analyzer for z/OS V2.1 Report Reference SC34-6800
- ▶ CICS Performance Analyzer for z/OS V2.1 Program Directory GI13-0517
- ▶ Redbook: CICS Performance Analyzer Release 3, SG24-6063
- ▶ Redbook: Migration Considerations for CICS Using CICS CM, PA and IA, SG24-7294
- ▶ Redbook: Systems Programmer's Guide to: z/OS System Logger, SG24-6898
- ▶ Red Paper: Performance Considerations and Measurements for CICS and System Logger, REDP-3768
- ▶ z/OS MVS System Management Facilities (SMF), SA22-7630
- ▶ CICS Performance Guide, SC33-1699
- ▶ CICS DB2 Guide, SC33-1939



Bibliography (continued)

CICS Configuration Manager

- ▶ CICS Configuration Manager for z/OS V1.2 User's Guide GC34-6777
- ▶ CICS Configuration Manager for z/OS V1.2 Program Directory GI10-2588
- ▶ Redbook - Migration Considerations for CICS Using CICS CM, CICS PA, and CICS IA, *SG24-7294-00*

CICS VSAM Recovery

- ▶ CICS VR V4.2 User's Guide and Reference, SC34-6804
- ▶ CICS VR V4.2 Implementation Guide, SC34-6802
- ▶ CICS VR V4.2 Program Directory, GI10-2599
- ▶ CICS VR V4.2 Messages and Problem Determination, SC34-6803
- ▶ Redbook: CICSVR Usage Guide, SG24-6563-00



Bibliography *(continued)*

CICS Online Transmission Time Optimizer:

- ▶ CICS Online Transmission Time Optimizer for z/OS User's Guide, SC34-6782
- ▶ CICS Online Transmission Time Optimizer for z/OS Compatibility Mode Guide, SC34-6780
- ▶ CICS Online Transmission Time Optimizer for z/OS Message Guide, SC34-6781
- ▶ CICS Online Transmission Time Optimizer for z/OS Program Directory, GI10-2549
- ▶ Systems Network Architecture: Sessions Between Logical Units, GC20-1868

CICS VSAM Transparency:

- ▶ CICS VSAM Transparency for z/OS V1.2 Program Directory, GI10-2581
- ▶ CICS VSAM Transparency for z/OS V1.2 User Guide and Reference, SC34-6679
- ▶ CICS DB2 Guide, SC33-1939

CICS Batch Application Control

- ▶ CICS Batch Application Control for z/OS V1.1.1 Program Directory, GI10-2574
- ▶ CICS Batch Application Control for z/OS V1.1.1 User's Guide, SC34-6321



Bibliography (*continued*)

IBM Session Manager

- ▶ Session Manager for z/OS - Program Directory, GI13-0504
- ▶ Session Manager for z/OS - Installation and Getting Started, GC34-6692
- ▶ Session Manager for z/OS - Technical Reference, SC34-6693
- ▶ Session Manager for z/OS - Facilities Reference, SC34-6694
- ▶ Session Manager for z/OS - Panels, Scripts and Variables, SC34-6695
- ▶ Session Manager for z/OS - Messages and Codes, GC34-6696
- ▶ Session Manager for z/OS – Online and Batch Administration, GC34-6697
- ▶ Session Manager for z/OS - Quick Reference, SC34-6698

