



IBM Software Group

SOA Application Development Lifecycle Tools for z/OS

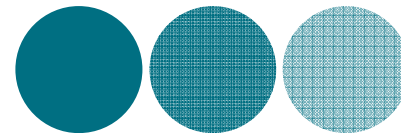
Name
Title
Email address

Rational software



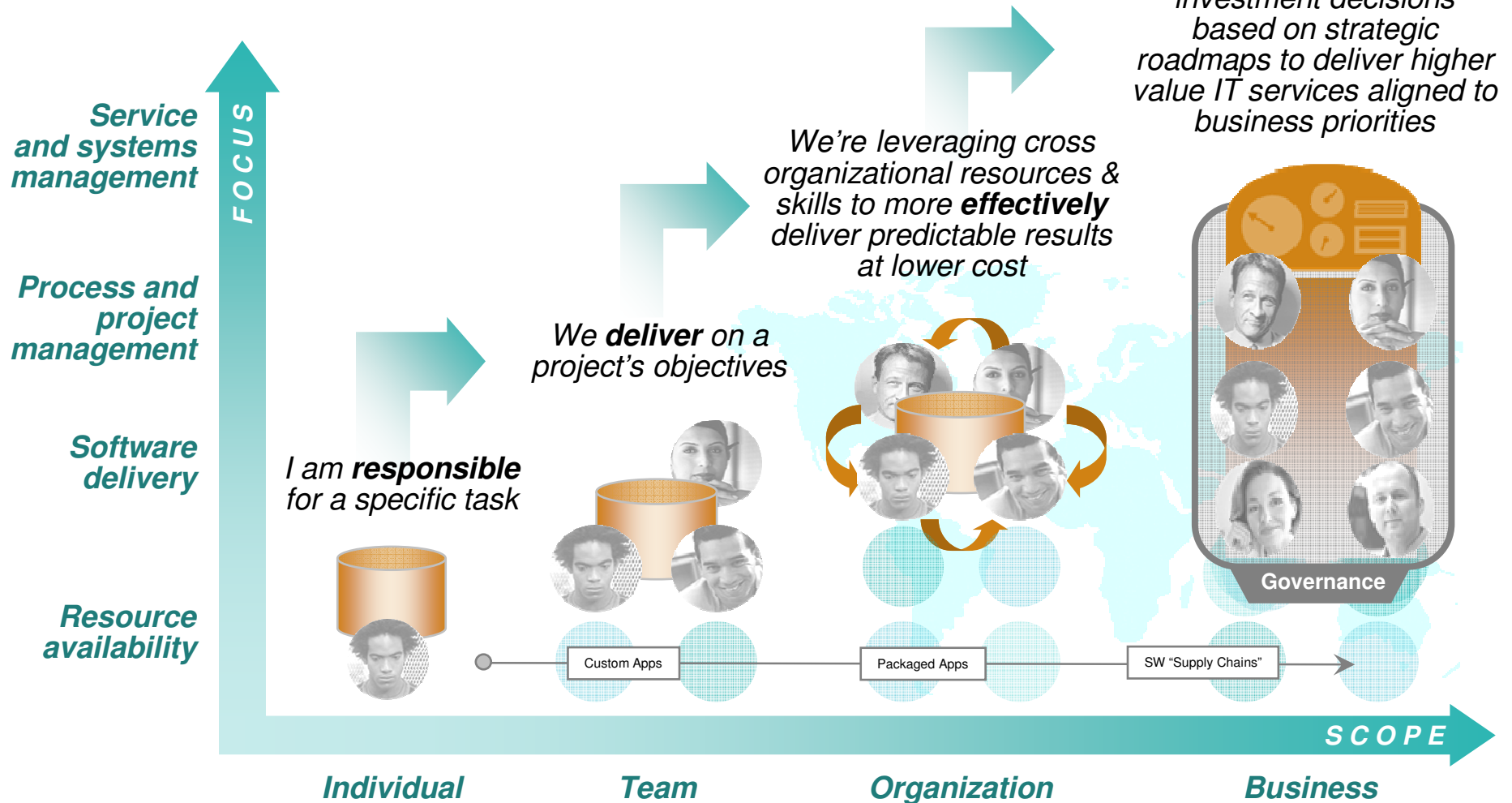
Agenda

- Today's Realities and challenges
- Overview of Rational Enterprise Modernization solutions
- Summary
- Q&A



The evolution of software delivery

Governing delivery in the context of the business



IT Challenges and the need for Modernization

- Businesses need to change to stay viable, and IT must enable this flexibility
- IT must overcome challenges to enable flexibility, such as:
 - ▶ No inventory of current IT assets
 - ▶ Complex, tightly coupled architectures
 - ▶ Skills lock-in
 - ▶ Islands of development
 - ▶ No flexibility for new investments
- The IBM Rational Software Delivery Platform helps companies overcome these challenges with comprehensive support for enterprise modernization



Enterprise modernization challenges

“Legacy modernization is morphing into a strategic function. IT can't afford to toss away reliable application transactions indiscriminately.”

-- Phil Murphy, Forrester Research, April 2007

Assets

Layer of disjointed, poorly understood enterprise assets, preventing reuse

Architectures

Tightly-coupled architectures hindering IT flexibility

Skills

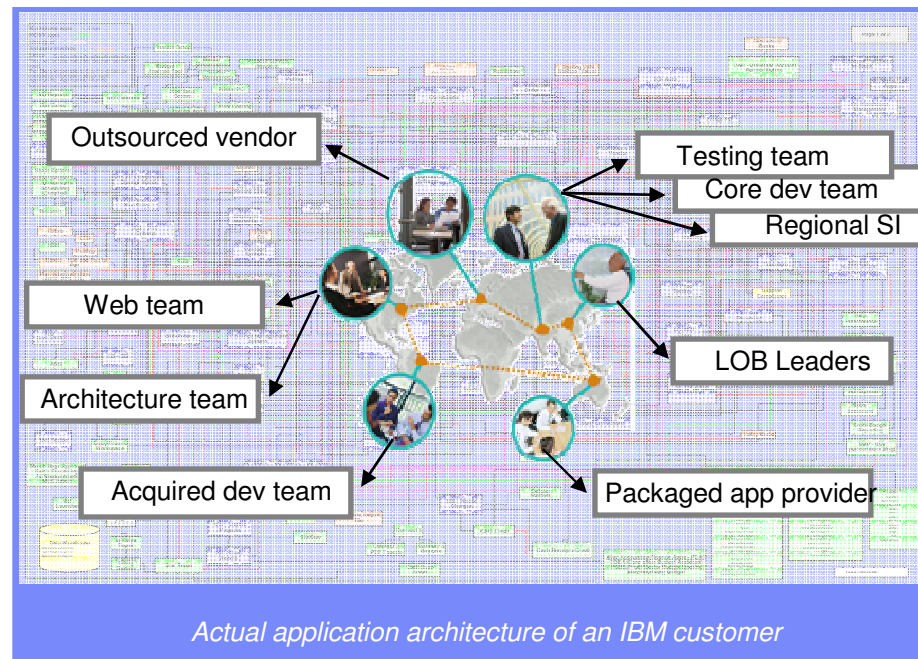
IT skills shortage and silos limiting staff productivity and mobility

Processes and tools

Duplicate processes, tools and infrastructures limiting collaboration

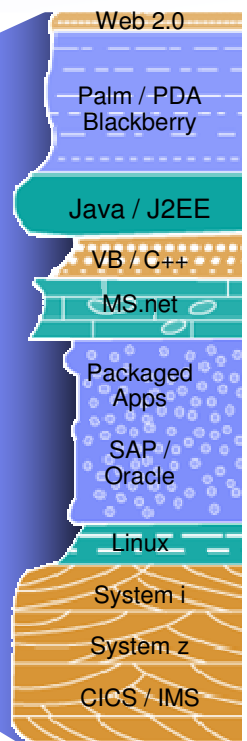
Investments

Increasing maintenance costs limiting flexibility for new investments



Actual application architecture of an IBM customer

Software archeology



Asset modernization

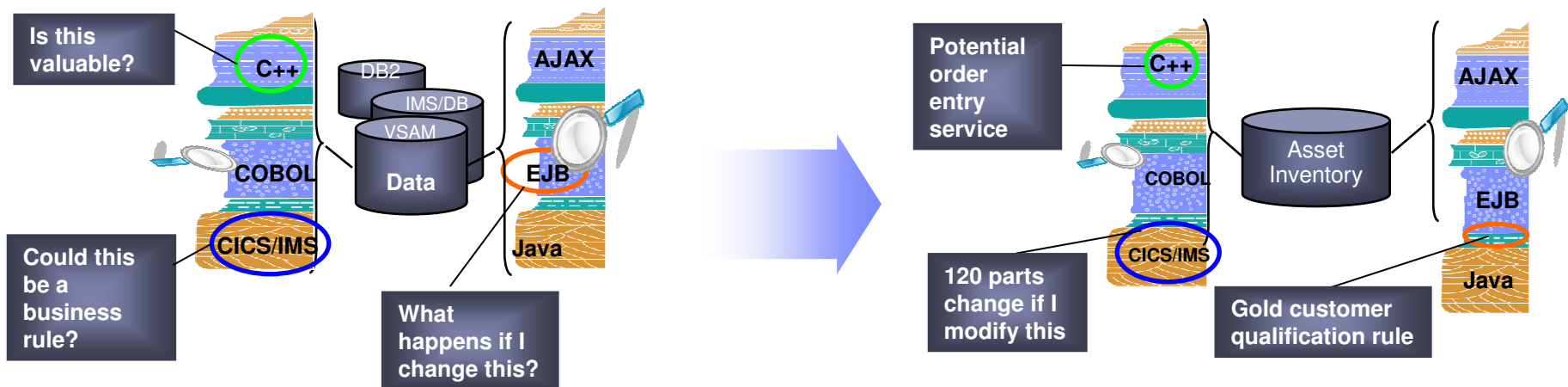
Challenge of managing knowledge assets

What you have...

- **A diverse application portfolio** evolved over many years and understood by few
- **Complexity** hindering the ability to gauge the impact of code changes resulting from new requirements
- **A lack of documentation** that limits reuse of existing business rules embedded within code

What you want...

- **An inventory** of existing highly stable code that embodies enterprise business intelligence
- **Ability to understand and manage** application complexity and change by making dependencies visible
- **Identify and document** existing business rules and business processes



Analyst studies have found it 5x less expensive to re-use existing applications than to write new applications.

Architecture modernization

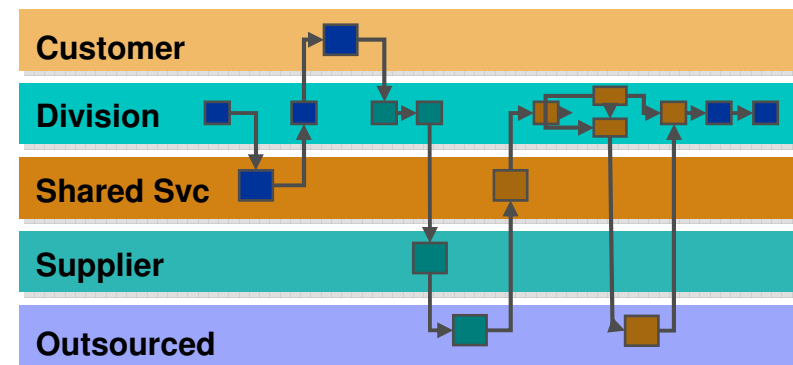
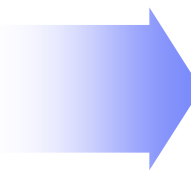
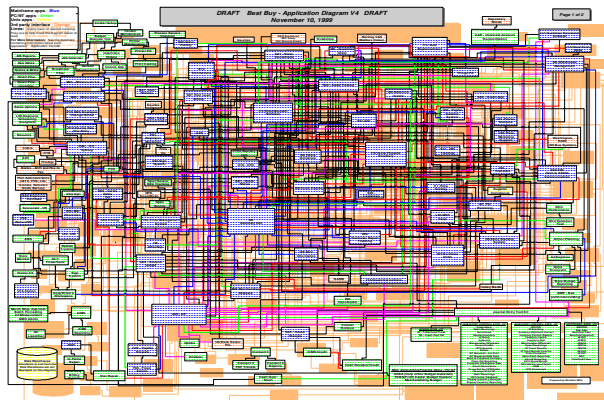
Challenge of tightly-coupled application architectures

What you have...

- **Tightly-coupled architectures** reducing flexibility and speed in moving to new technologies
- **Complexity** that hampers the ability to reuse existing code for new projects
- **Multiple implementation technologies** and incompatible middleware limiting code mobility

What you want...

- **Services created** from existing business logic or user interfaces for wider use and value
- **Increased reuse** of existing highly stable code that embodies enterprise business intelligence
- **Service design separated from service implementation** to attain optimal flexibility



“SOAs cost 20% less to implement and saves 50% more with each reuse than traditional component-based development... the level of reuse in SOA development averages 2.5 times more than non-SOA development”
Jeffrey Poulin, PH.D. and Alan Himler, MBA, 2006 “The ROI of SOA – Based on Traditional Component Reuse”

“Today’s IT architectures, arcane as they may be, are the biggest roadblocks most companies face when making strategic moves.” *The McKinsey Quarterly Special to CNET News.com, “Flexible IT, Better Strategy”, January 24, 2004*

Skills modernization

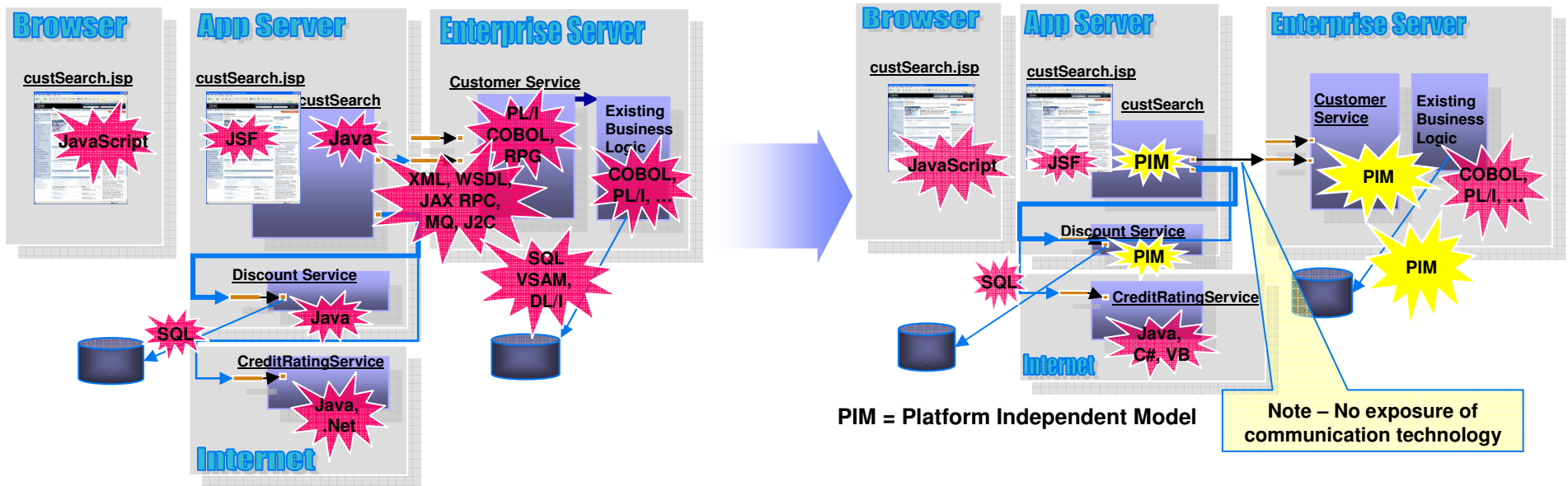
Challenge of IT skills shortage and silos

What you have...

- **Skills islands** preventing staff mobility and constrains IT flexibility resulting in application backlogs
- **Reduced capacity** due to dwindling IT skills and difficulty in attracting new development talent
- **Limited ability** to exploit technology innovations without retraining traditional developers to Java

What you want...

- **Increased mobility** of existing “business-knowledgeable” staff on multi-platform projects
- **Increased capacity** by deploying new employees on any project independent of target platform
- **Increased productivity** by leveraging solutions that hide underlying platform and technology complexity



Processes and tools modernization

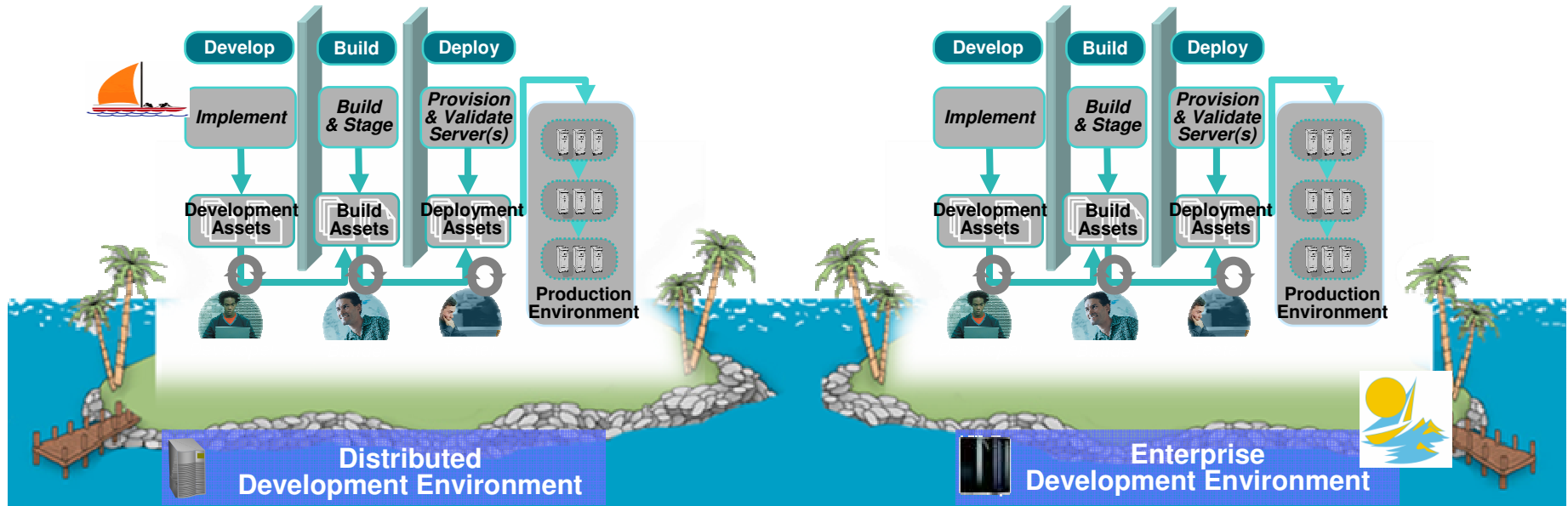
Challenge of IT development islands

What you have...

- **Different infrastructures** for host and distributed development limiting IT and staff flexibility
- **Increased costs** to support multiple infrastructures, with less capital available to invest in new projects
- **Lack of traceability** inhibiting end-to-end governance

What you want...

- **Consolidated** towards a single infrastructure for host and distributed development environments
- **Improved efficiency** and reduced costs by eliminating duplicate tools and processes
- **Improved governance** and traceability across the entire software lifecycle



Processes and tools modernization

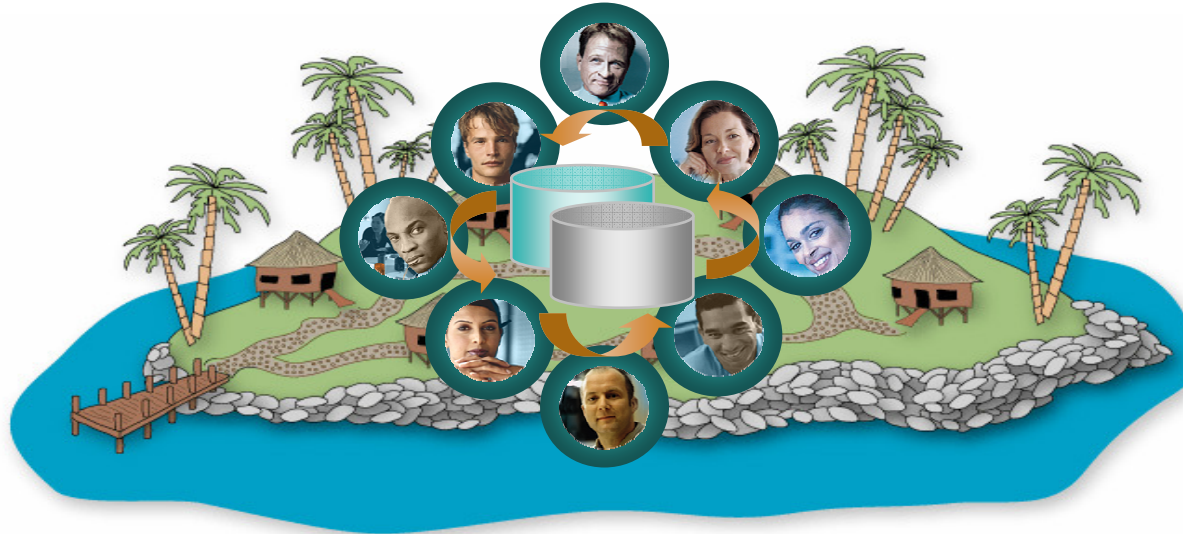
Challenge of IT development islands

What you have...

- **Different infrastructures** for host and distributed development limiting IT and staff flexibility
- **Increased costs** to support multiple infrastructures, with less capital available to invest in new projects
- **Lack of traceability** inhibiting end-to-end governance

What you want...

- **Consolidated** towards a single infrastructure for host and distributed development environments
- **Improved efficiency** and reduced costs by eliminating duplicate tools and processes
- **Improved governance** and traceability across the entire software lifecycle



 **Consolidated Development Environment** 

Investment modernization

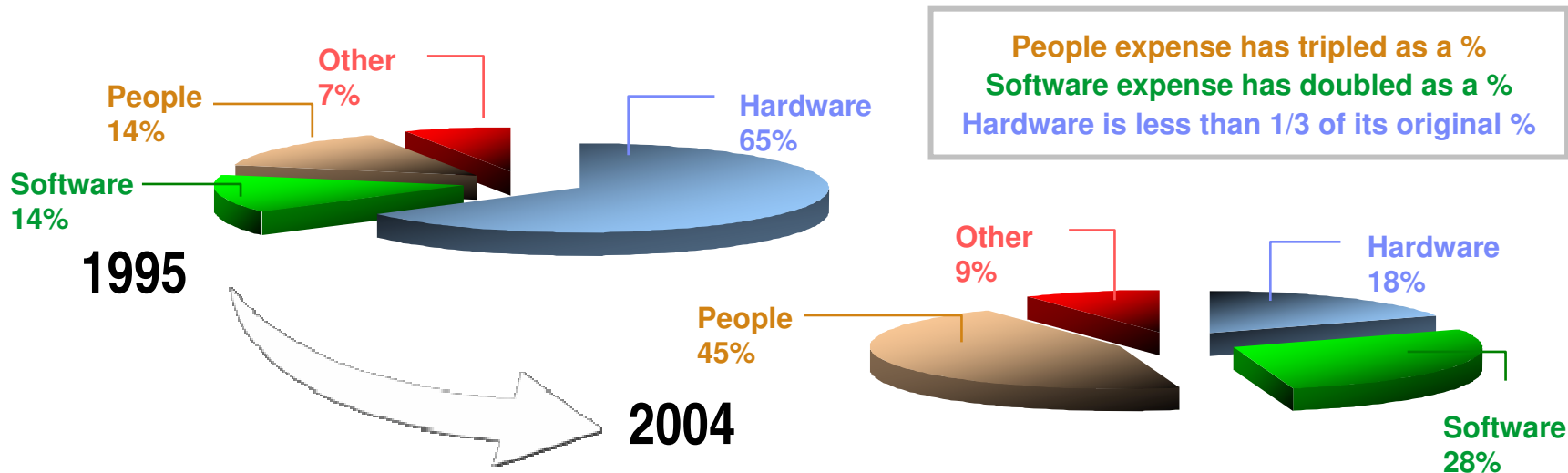
Challenge of lack of flexibility for new investments

What you have...

- **Shrinking IT budgets** with a significant % (~75-80) being applied towards maintaining existing systems
- **Outdated application development platforms** which cannot leverage modern technologies and middleware advances
- **An increasing application backlog** that limits ability to incrementally improve overall modernization posture

What you want...

- **Freed-up IT budgets** to help devote resources to new development rather than maintenance
- **Move to standard development platforms** that support enterprise as well as distributed teams
- **Make incremental improvements** within the context of a long-term strategic modernization plan



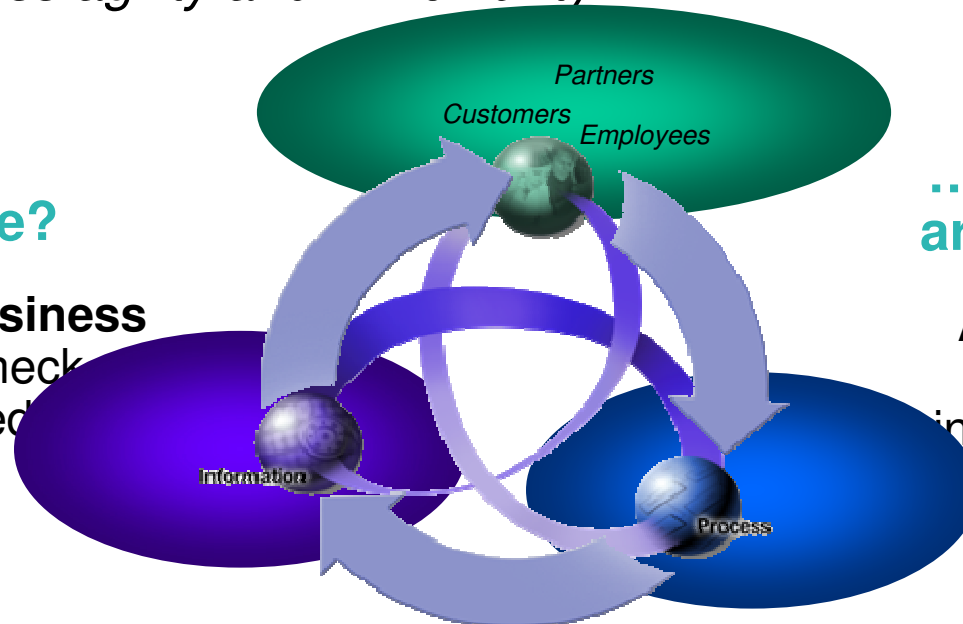
Over the past 10 years, the cost dynamics in IT has changed significantly. Page 11

Services Oriented Architectures (SOA)

Enabling business agility and IT flexibility

... a service?

A **repeatable business task** – e.g., check customer credit

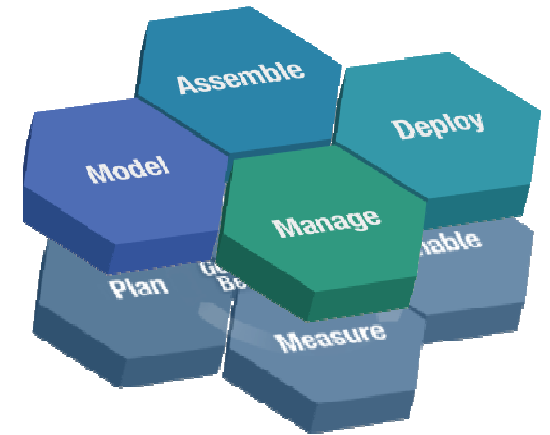
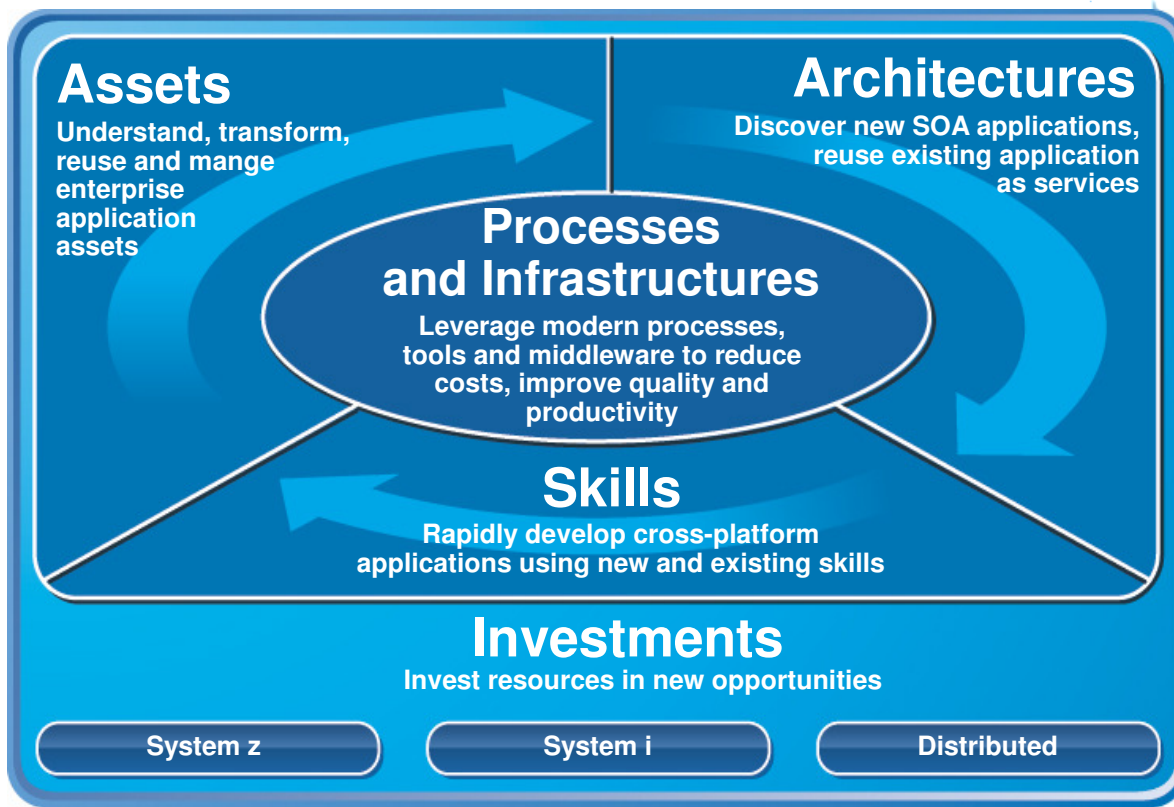


... service oriented architecture (SOA)?

An IT **architectural style** that supports integrating businesses as linked services

- ✓ **Enables business flexibility**
- ✓ **Better aligns *IT* & business investments**
- ✓ **Enables Adaptive business processes**
- ✓ **Lowers cost of *IT***

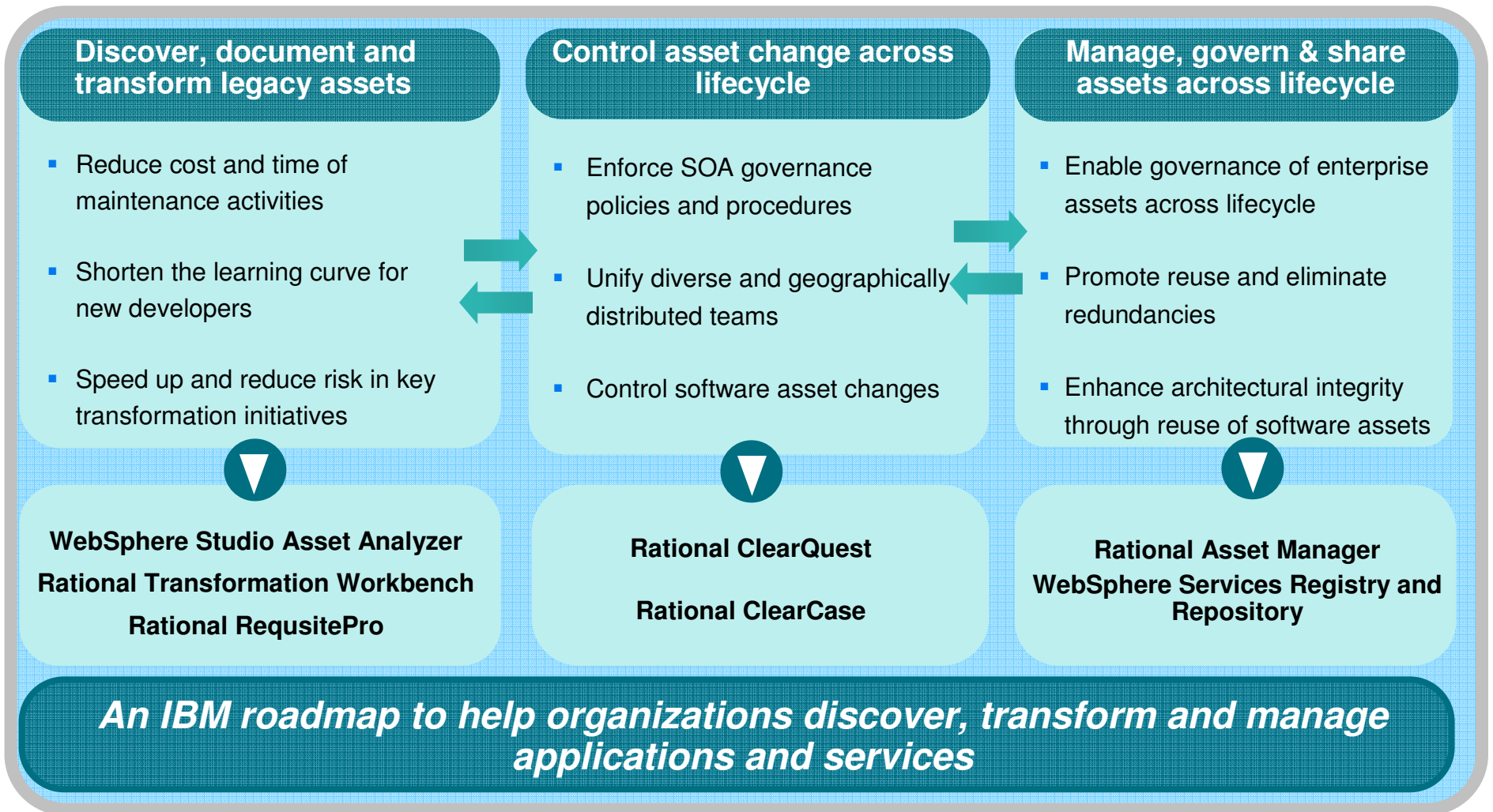
Accelerating Enterprise Modernization towards SOA



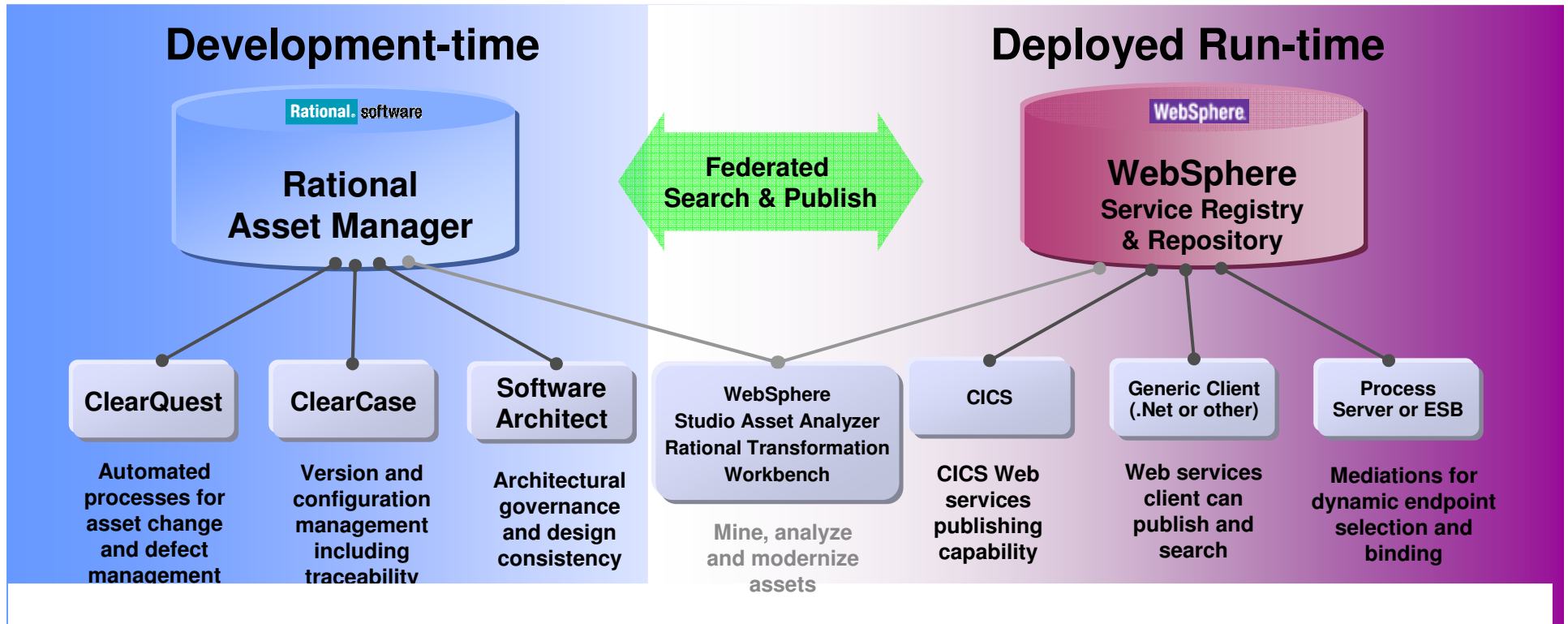


Asset modernization

Comprehensive inventory of assets for reuse and modernization



A comprehensive IBM solution to SOA asset discovery, transformation and management



CREATION

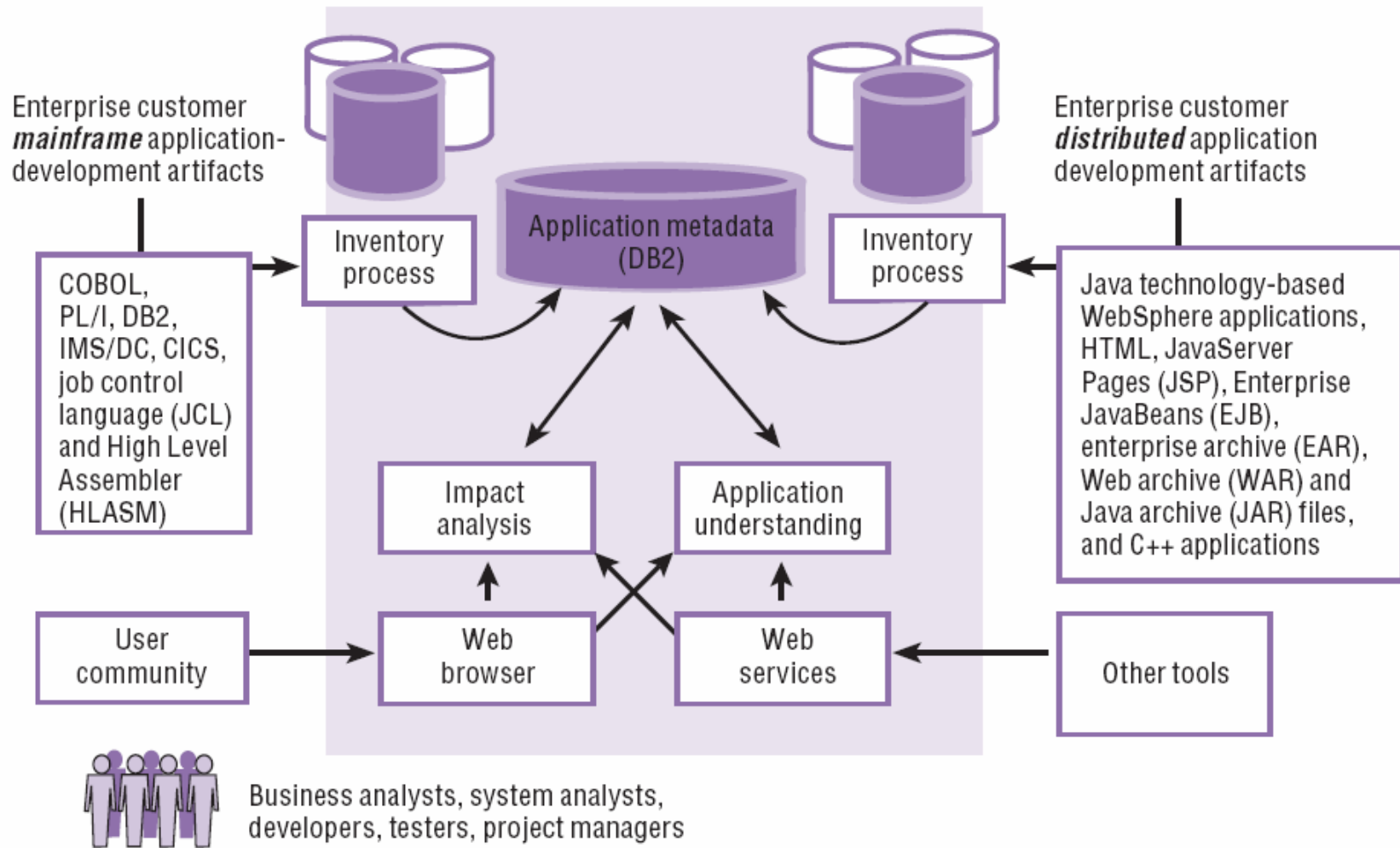
Manages information that is useful for the creation and reuse of all types of reusable assets

CONSUMPTION

Manages information that is useful for the discovery and consumption of operational runtime services



WebSphere Studio Asset Analyzer V5.1



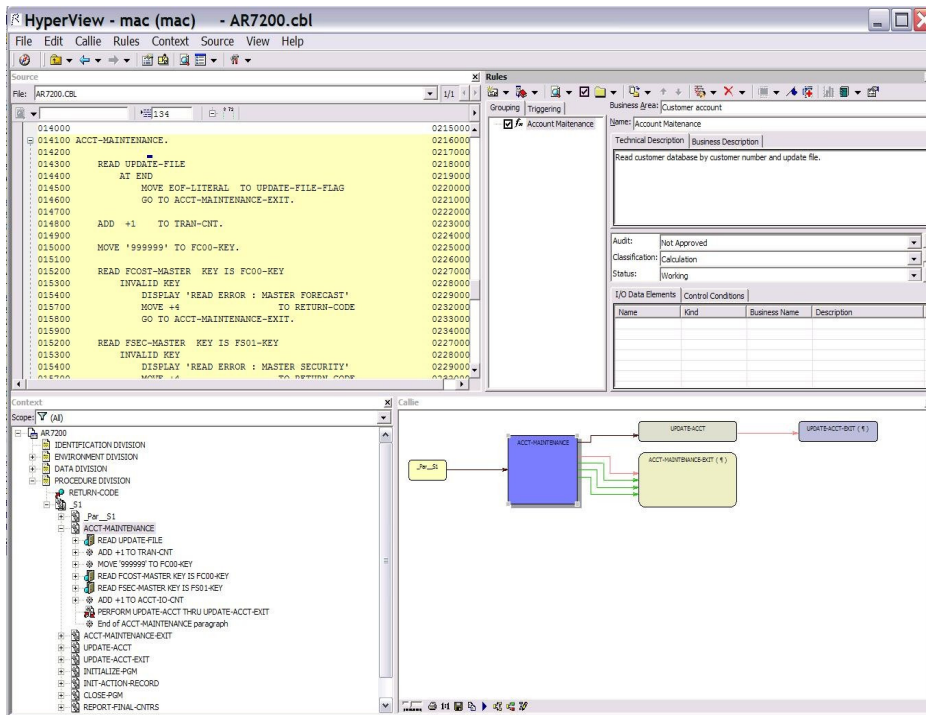
IBM Rational Transformation Workbench V3.1

Accelerate your path to reuse and SOA-readiness



Rational Transformation Workbench v3.1 – helps collect and abstract business and technical knowledge from highly complex systems for better understanding

- Demystify enterprise applications and their inter- and intra-relationships
- Gain intellectual control; make fact-based decisions; develop transformation roadmap.
- Identify key assets and restructure for reuse in SOA; reduce cost and time of modernization projects
- Reduce cost and time of on-going application maintenance
- New in 3.1
 - ▶ New system level, source level and application glossary information to users
 - ▶ Business rule extension improved usability, productivity, automation, auto-detection, visualization, reporting, abstraction and analytics
 - ▶ Improved executive reports and additional report customization. Key reports available in batch mode



The new business rules extension can help speed the identification of your company valuable business rules

Modernizing existing systems to offer more higher-margin accessories



Multinational auto manufacturer

Challenge

- Expand existing systems to offer more higher-margin accessories; requires change to field used by >1300 programs
- Identify obsolete code within their automotive systems and begin a “decommissioning” process

Solution

- Performed impact analysis with WSAA, coupled with GBS Test Environment Builder to accelerate system verification
- Now employing RTW to start decommissioning” process

Products include:

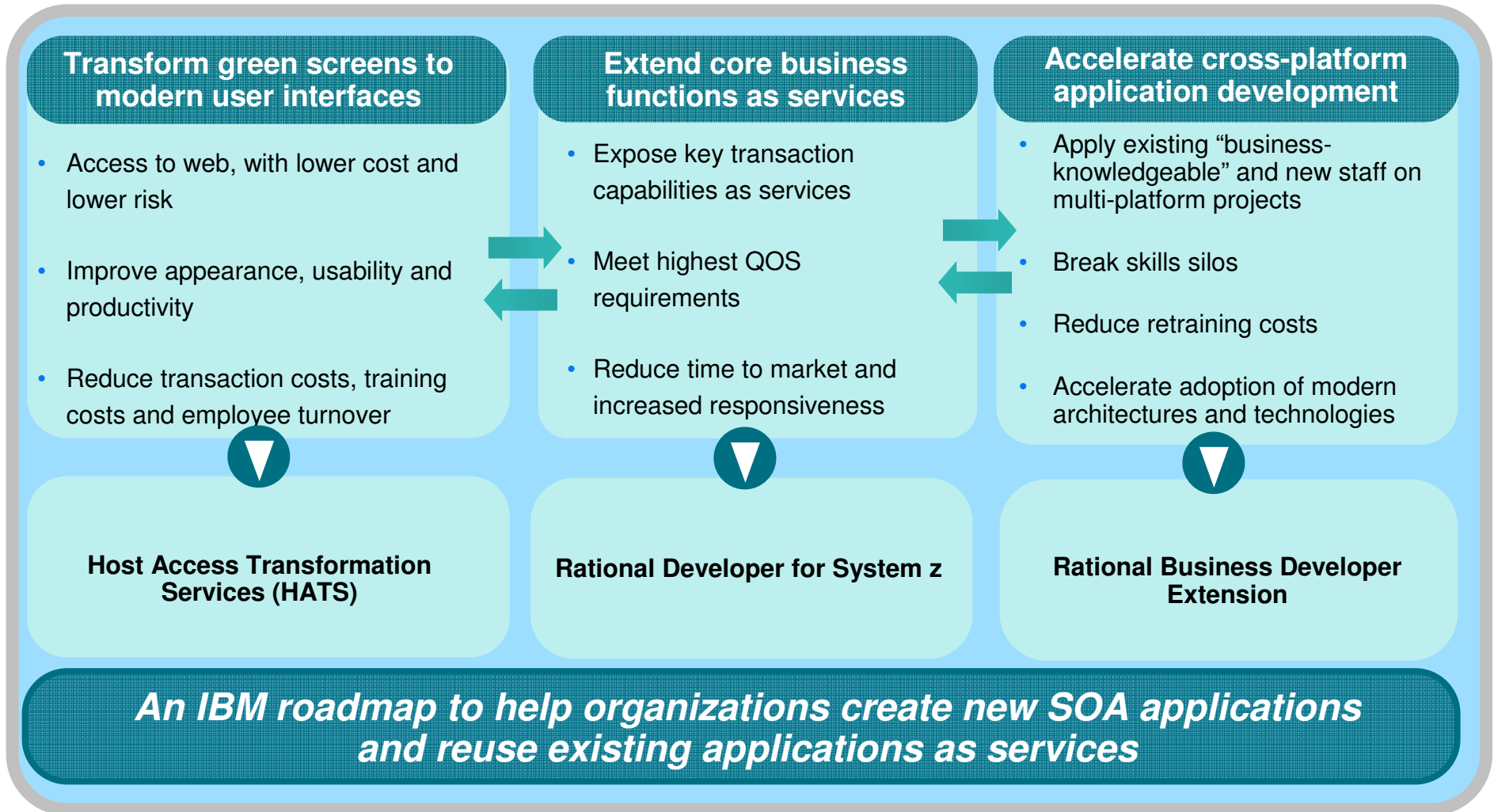
- WebSphere Studio Asset Analyzer
- IBM Rational Transformation Workbench



“We are very pleased with WSAA. It is doing just what we want and need it to do.” - AD manager

Architecture & skills modernization

Accelerate your path to reuse and service-oriented architectures



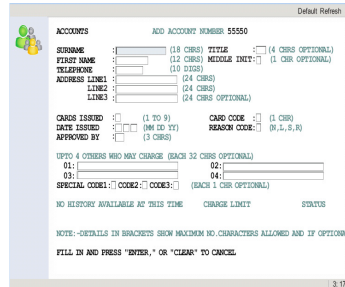


Host Access Transformation Services

Modernize user interfaces and create Web Services

- Modernize and streamline “green screen” applications
- Combine data from multiple screens, applications and databases
- Non-invasive

Rich Client



- Integration at the desktop with other Eclipse applications
- Client side processing
- Rich set of user interface widgets
- Built on the standard, open Eclipse foundation
- 3270e print directly to end user’s printer

Example: CICS App

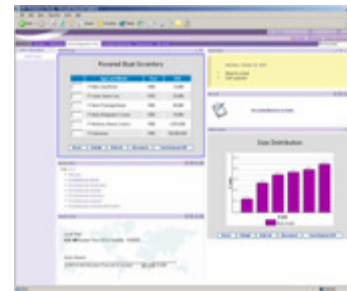
3270 or 5250 Data stream

Web Service



- Build self-service transactions

Portal



- Integration at the glass
- Click-to-Action support

Web



- Zero footprint
- View through your favorite browser



Improving customer satisfaction and reducing costs

Mercantil do Brasil



Challenge

- Help developers integrate the bank's .NET applications with its OS/390 environment.

Solution

- Use IBM modernization tools to effectively bridge the gap between Mercantil do Brasil's .NET applications and its OS/390 operating environment.

Products include:

- WebSphere Host Access Transformation Services (HATS)
- WebSphere Application Server for z/OS



"Beyond the financial benefits, this new solution gave us speed and quality in the execution of our services."

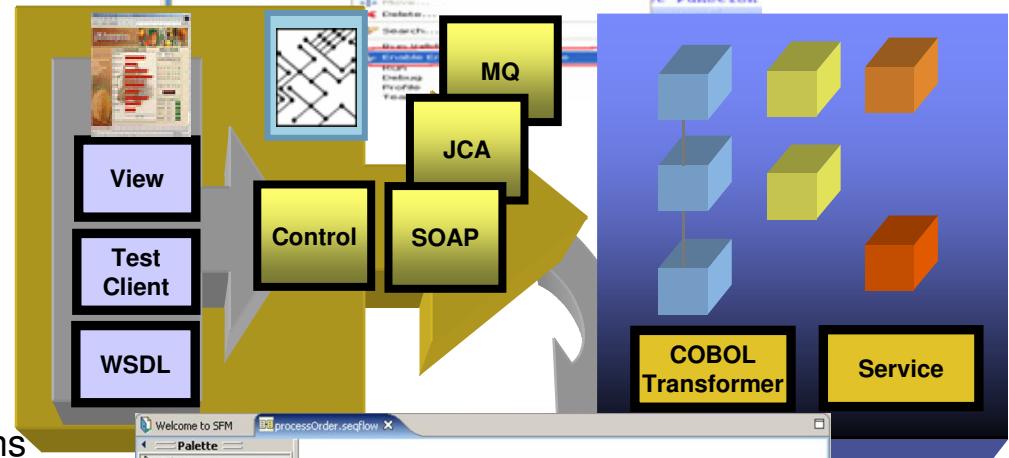
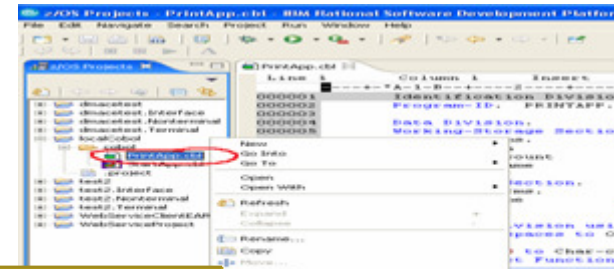
-- Jaime Herrera,
technical support
manager, Mercantil do
Brasil

IBM Rational Developer for System z V7.1

Preserve System z investment – and leverage existing assets

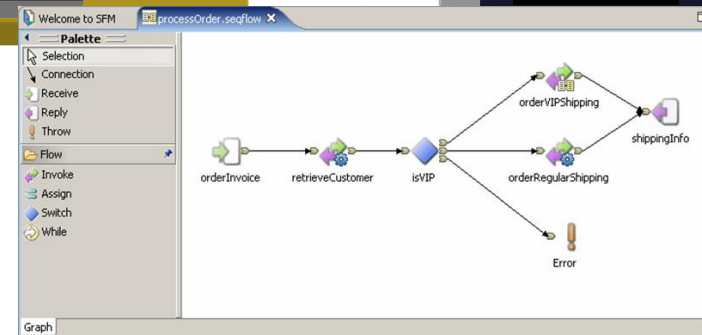


- An intuitive, visual construction based on open standards (J2ee, Java Server Faces)
- Broad SOA support through Web Services and JCA with specialized System z capabilities
- Build Web services from existing CICS applications
- Comprehensive state-of-the-art facilities for developing, debugging and deploying COBOL, PL/I, C, Java, CICS, IMS, Batch, DB2 processing



Service Flow Feature and Modeler for CICS v3.2

- Build Web services from existing CICS applications
 - ▶ Aggregates multiple CICS transactions into high-level business processes through visual modeling
 - ▶ Supports BMS (terminal-based), CICS COMMAREA, and CICS Channel/Container, and CICS Web Service applications
 - ▶ Highly optimized CICS runtime supporting Web services and XML interfaces



Extending COBOL applications for online banking

Commerzbank



Challenge

- Upgrade teller workstations and ensure they continue to work with an existing third-party COBOL run-time environment

Solution

- Develop new application framework based on IBM COBOL
- Leverage single development that support both host and distributed platforms

Products include:

- IBM Rational Developer for System z

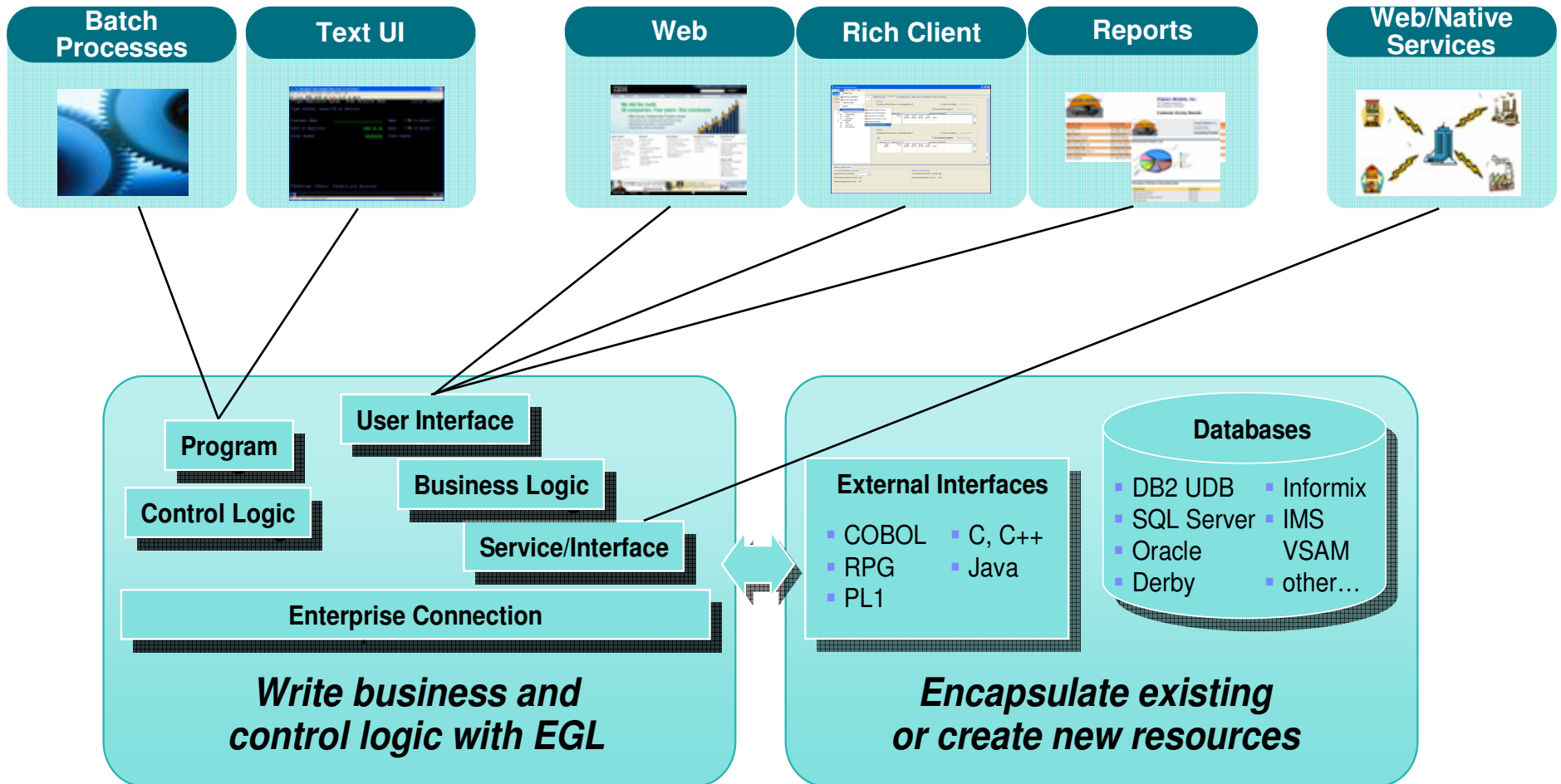


“In one tool, we have a single development environment for multiple environments. I don’t have to jump between different tools to do different tasks. The tool is very complete.”

Armin Schiller, transaction banking payments and cash transactions, Commerzbank AG

IBM Rational Business Developer Extension V7.0

Unified approach to end-to-end construction that shields developers from intricacies of runtimes and middleware



Improving productivity by breaking skills silos

KBC



Challenge

- Leverage existing “business-knowledgeable” IT staff to create business services without dealing with platform and technology complexities

Solution

- Unify application development across all platforms and transaction managers (e.g. WAS, IMS)

Products include:

- IBM Rational Business Developer Extension
- IBM Rational Developer for System z

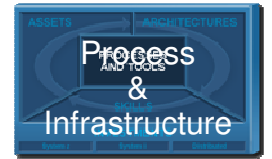


“We want to avoid the ‘skill silos’; what we really need is a large group of general developers who should not worry about target platforms and focus on developing business components, and only a small number of technology specialists, so that we can swiftly allocate general developers to upcoming business needs. . . . EGL is helping us achieve this goal.” -

*Lieven Gouwy, IT architect,
KBC*

Processes and tools modernization

Shared development platform enterprise and distributed teams



Manage application portfolio, requirements and processes

- Align organizational and business needs to prioritize investments
- Ensure modernization efforts align with business goals and requirements
- Govern service lifecycle within a clearly articulated decision framework



Rational Portfolio Manager
Rational RequisitePro
Rational Method Composer

Enhance collaboration and traceability across teams

- Enforce development processes for better insight and predictability
- Establish shared repository for asset reuse and traceability
- Automate build management across platforms



Rational ClearQuest
Rational BuildForge
Rational ClearCase
SCLM Advanced Edition for z/OS

Test service functionality and scalability

- Save time and guarantee repeatability by automating tests
- Validate the scalability and reliability of services before deployment
- Manage service test scenarios for multiple projects and teams



Rational Functional Tester
Rational Performance Tester

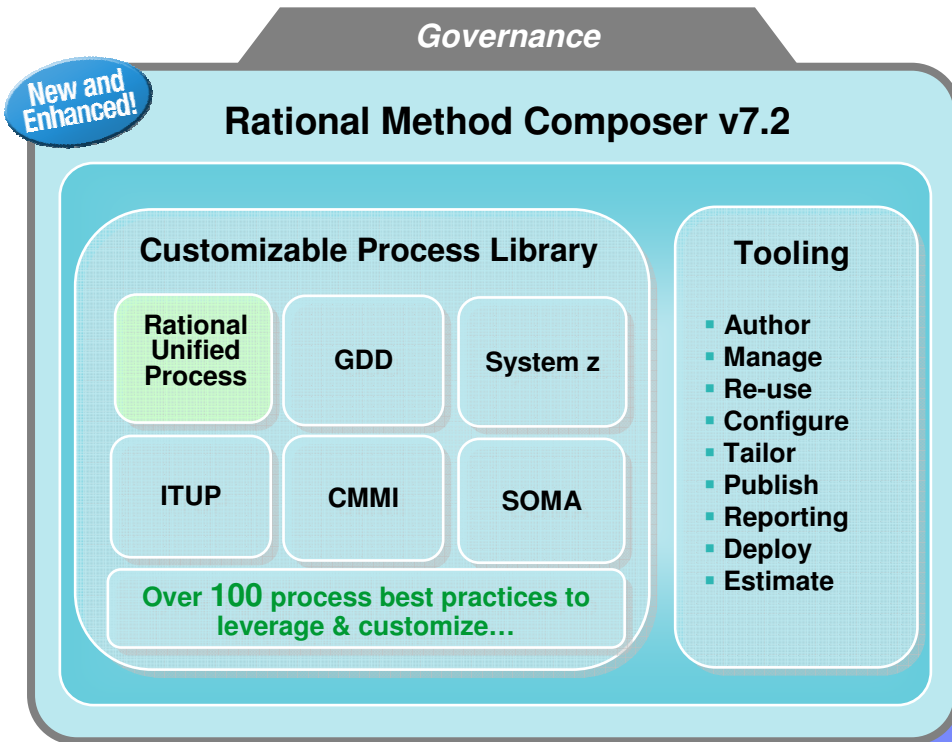
An IBM roadmap to help organizations enhance team productivity and collaboration by sharing a common development platform across teams

Rational Process and Portfolio Management

Putting process best practices to work



Now a library of over 100 !



Examples of process best practices

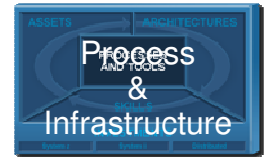
- Rational Unified Process for System z
- IBM Tivoli Unified Process (ITUP) & Rational Unified Process (RUP) integration
- RUP for global distributed development
- CMMI level 2 with CMMI & RUP mapping
- Asset Based Development (ABD) process for producing and consuming assets
- Plug-in to govern asset investments
- SOA design and construction

Result: Easier, more effective deployment of customized and adaptable process best practices for enterprise-wide application development

WebSphere

WebSphere Business Modeler integration to analyze & simulate processes

Managing Requirements with IBM Rational RequisitePro



- Keep your team on track with interface of your choice
- Organizing and reporting on requirements
- Managing changing requirements for traceability
- Communicating changes and their impact

Requirements	Type	Priority	Status
FEAT1: Secure payment method Secure payment method	Functional	Must	Incorporated
FEAT2: Easy browsing Easy browsing for available titles	Functional	Should	Proposed
FEAT3: Search by multiple criteria Ability to search for CDs by multiple criteria	Functional	Must	Approved
FEAT4: Ability to check status of an order Ability to check the status of an order	Functional	Should	Validated
FEAT5: E-mail notification of new titles of interest E-mail notification for Shoppers when new titles that may interest them are added to the collection.	Functional	Could	Proposed
FEAT6: Highly scalable Highly scalable to include many titles and effective searching through those titles	Non-Functional	Must	Proposed
FEAT7: Ability to customize the Web site Shoppers should be able to customize the Web site.	Functional	Should	Proposed
FEAT8: User registration good for future purchases Shoppers should be able to register once for all purchases; they should not be asked to re-enter personal information.	Functional	Should	Incorporated
FEAT9: Shipping Status Shoppers should be able track any package that has been shipped to them.	Functional	Should	Approved
FEAT10: Ability to add/remove offerings to add/remove CDs available for sale	Functional	Should	Proposed
1.1 Ability to check on customer orders to check on Shopper orders	Functional	Must	Incorporated
1.2 Maintain customer information gain Shopper information	Functional	Must	Proposed
1.3 Generate reports rate reports	Functional	Should	Incorporated
1.4 Use Legacy System existing legacy Warehouse System for shipping orders.	Functional	Must	Proposed

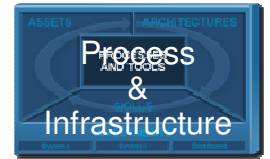
UC4: Purchase CD	FEAT1: Secure Payment method	FEAT2: Easy Browsing for available titles	FEAT3: Search capabilities	FEAT4: Ability to check the status of an order.	FEAT5: E-mail notification of new titles of interest
UC4.1: BRIEF DESCRIPTION The Shopper has already selected CDs he/she is...					
UC4.2: BEGIN REQN. The use case ends when the Shopper...					
UC4.3: IDENTIFY SHOPPER IDENTIFY SHOPPER. The system requests...					
UC4.4: GET PROJECTED SHIP DATES GET PROJECTED SHIP DATES. The system...					
UC4.5: SUMMARY SUMMARY. The system displays a summary of...					
UC4.6: COMPLETE ORDER COMPLETE ORDER. The Shopper completes...					
UC4.7: END END. The use case ends when the new order has...					
UC4.8: INVALID SHOPPER ID					

“With Rational RequisitePro's suspect links, my team members and I can immediately see changes that are made...”

Jason Oliver, Kodak

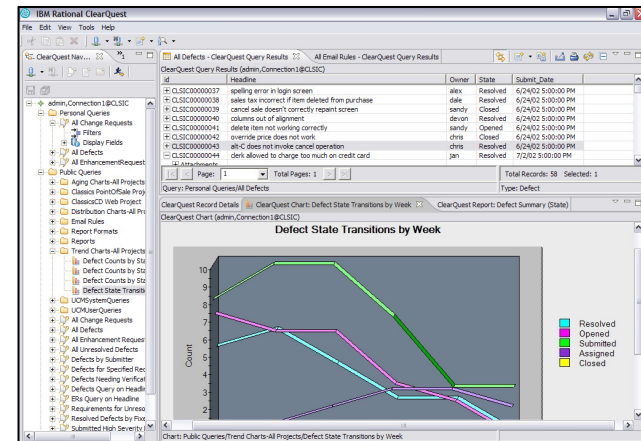
IBM Rational ClearQuest

Single solution to manage change across your project

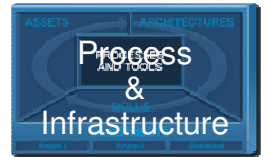


Governs, integrates, and automates your global development processes and workflow between your global teams IBM Rational ClearQuest orchestrates collaboration and work transfer between distributed team members.

- Consolidated, real-time view of the entire project status
- Traceable, auditable relationships between development, testing, building and project artifacts
 - ▶ Comprehensive quality metrics in project dashboards and reports
 - ▶ Manage test planning, test results, quality metrics, and defects
 - ▶ Secure, central repository
 - ▶ Integrations with version control, build management and requirements management



- Integration with Rational Asset Manager (RAM)
 - ▶ maximizes asset reuse
- Enhanced integration with Rational Portfolio Manager
 - ▶ maximizes project management

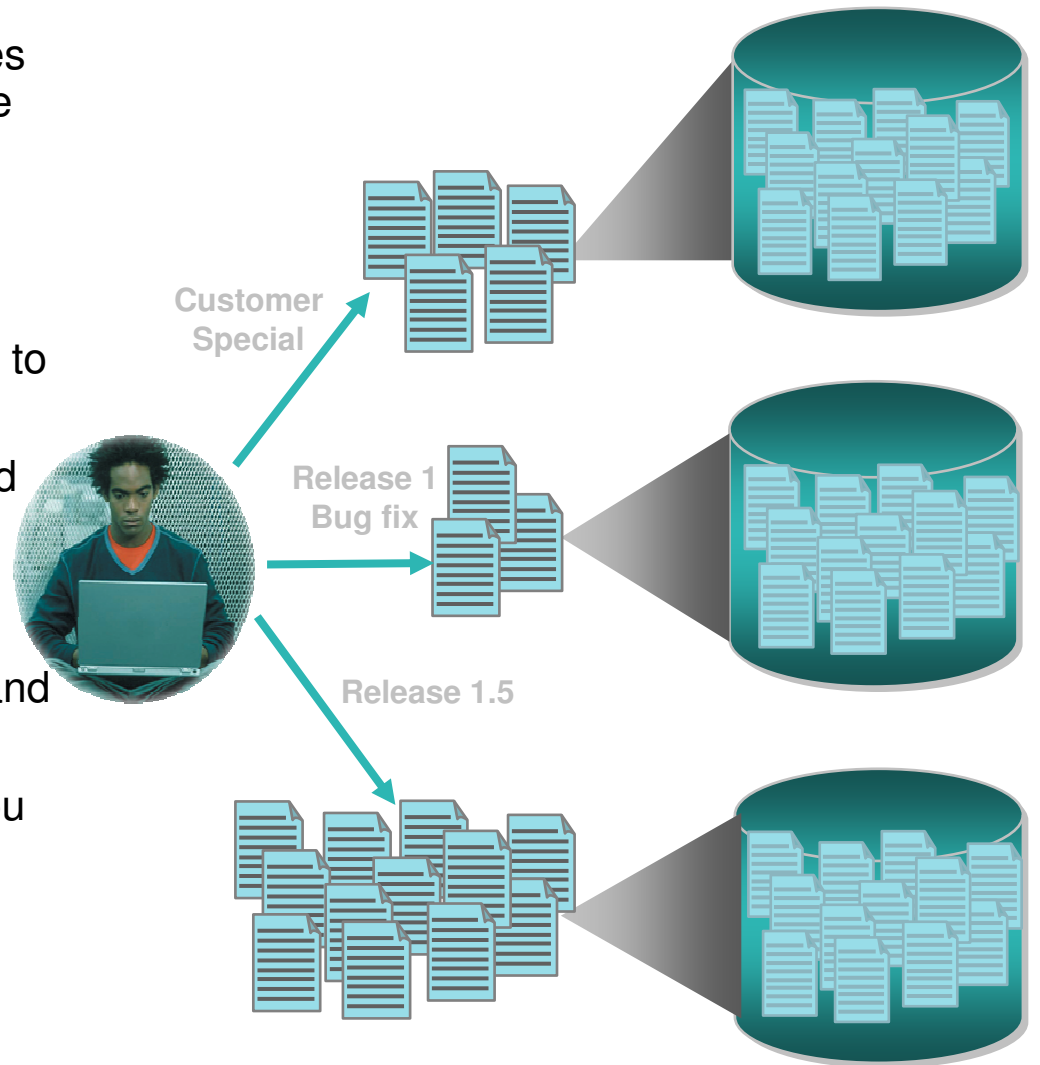


IBM Rational ClearCase

Complete Software Configuration Management

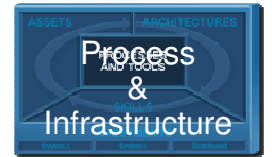
An industry-leading solution that provides sophisticated version control, workspace management, parallel development support and build auditing to improve productivity

- Integration with leading IDEs allows you to work in your preferred environment
- Transparent real-time access to files and directories virtually anywhere in your organization
- Sophisticated branching and graphical merge tools enable concurrent access and efficient use of time
- Light-weight feature-rich clients allow you to work locally or remotely.
- Support for open source environments provides added workspace flexibility



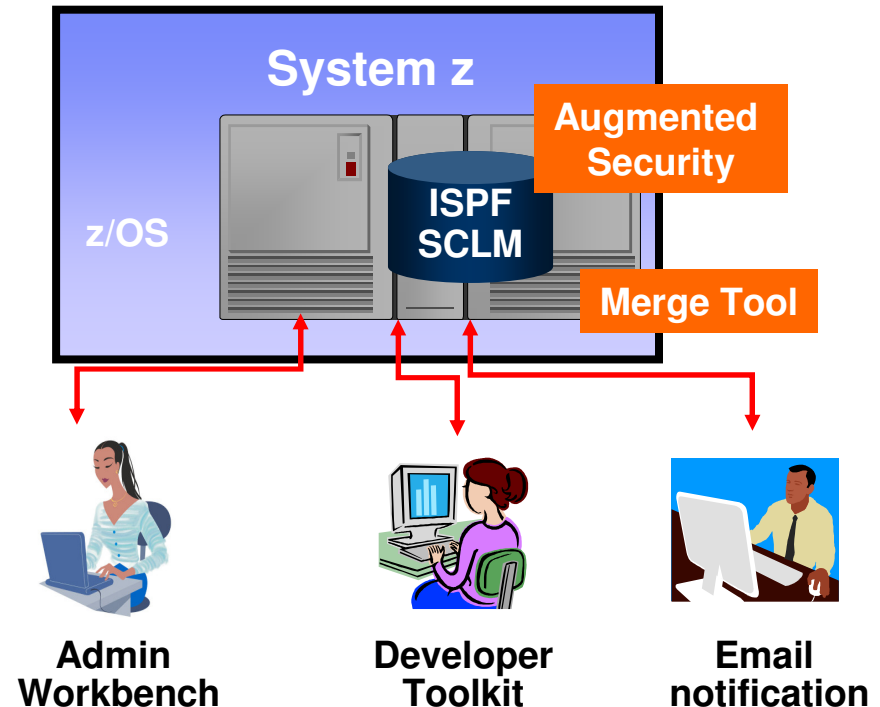
IBM SCLM Advanced Edition

Managing the application development process



■ Provides

- ▶ Library and configuration management
- ▶ Package approval processing
- ▶ Granular security controls
- ▶ Easy-to-use three-way merge tool
- ▶ Easy-to-use GUI interface to ease administration tasks
- ▶ Source code management of Eclipse based IDE projects



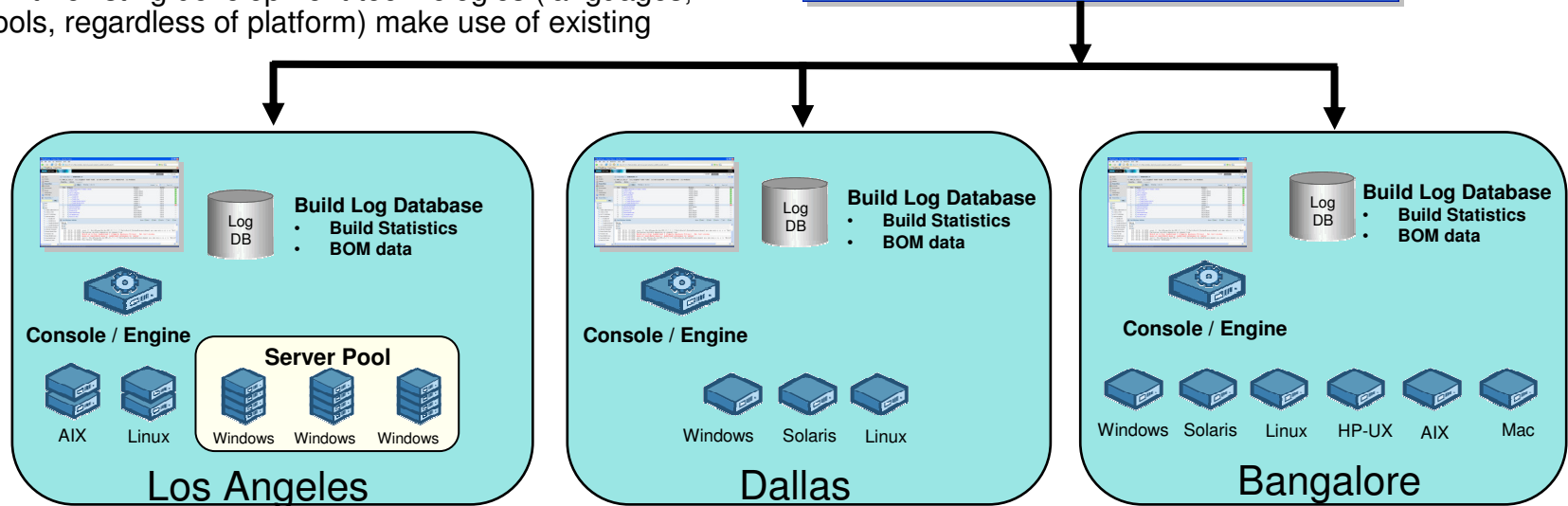
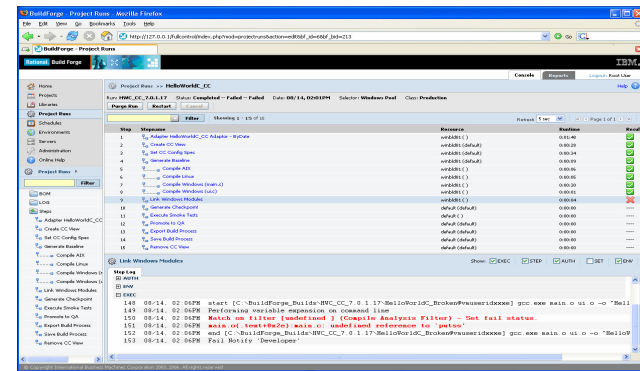


IBM Rational Build Forge

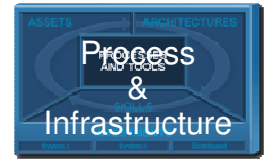
Centralized management across geographically distributed teams

A process execution framework that automates and accelerates build and release processes for Agile development and streamlined software delivery

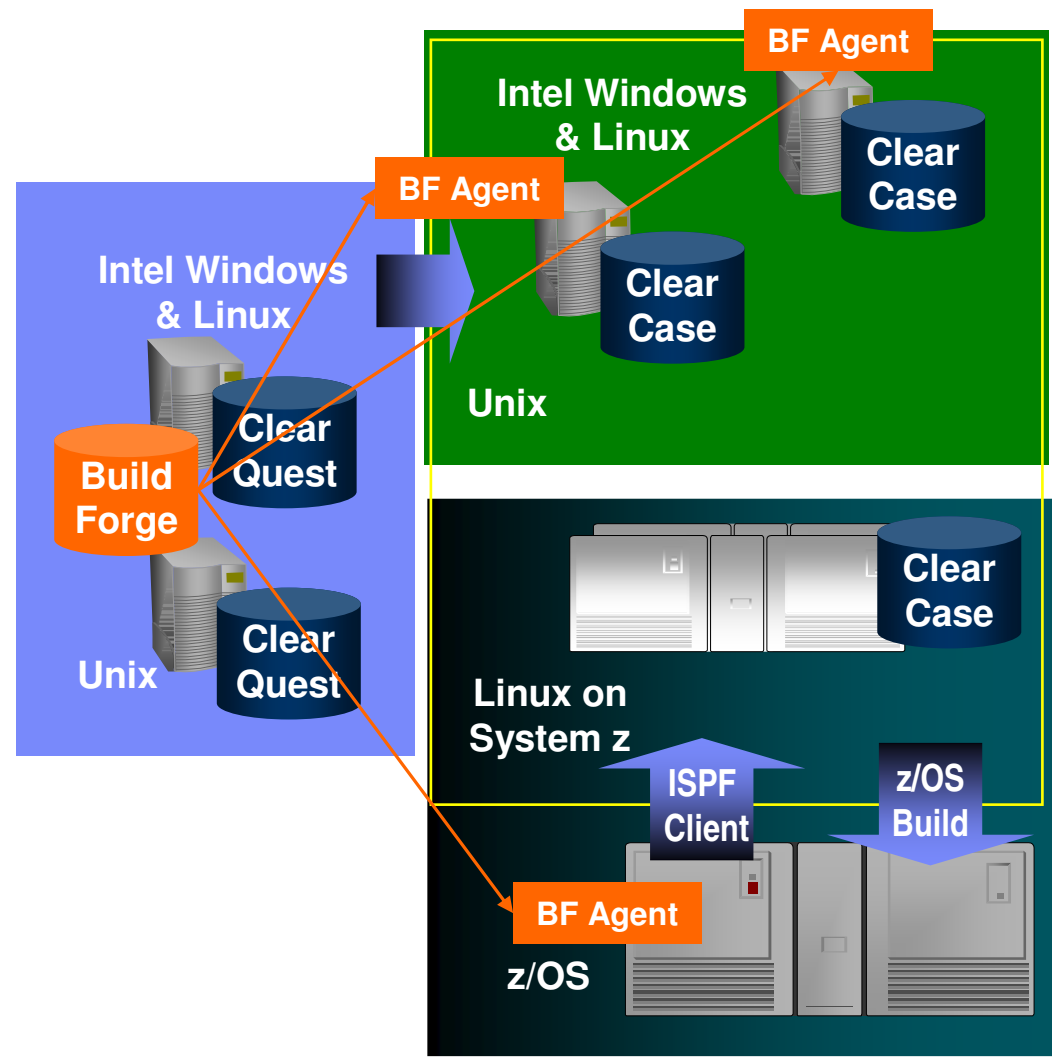
- Quick builds using pre-configured build processes and environments automates tasks for increased efficiency
- A complete bill-of-materials list changes and the contents of each build for more accurate testing and problem resolution
- Enterprise reporting improves visibility into the build and release processes and helps to meet compliance mandates
- Integration with leading IDEs provides controlled, self service access to production build processes and allows you to work in your preferred environment
- Integration with existing development technologies (languages, scripts and tools, regardless of platform) make use of existing investments



ClearCase/ClearQuest/Build Forge for the Enterprise

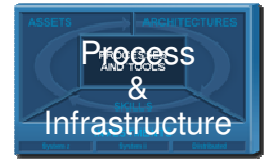


- Extends ClearCase/ClearQuest/Build Forge to manage both distributed and z/OS assets
- Provides single point of control, single artifact repository, single set of user interfaces
- Provides consistent process paradigm across platforms
- Extends the power of the Software Delivery Platform and ClearQuest/ClearCase UCM to z/OS development



Functional Testing with IBM Rational Functional Tester

Test automation for the novice and the professional



■ IBM Rational Functional Tester

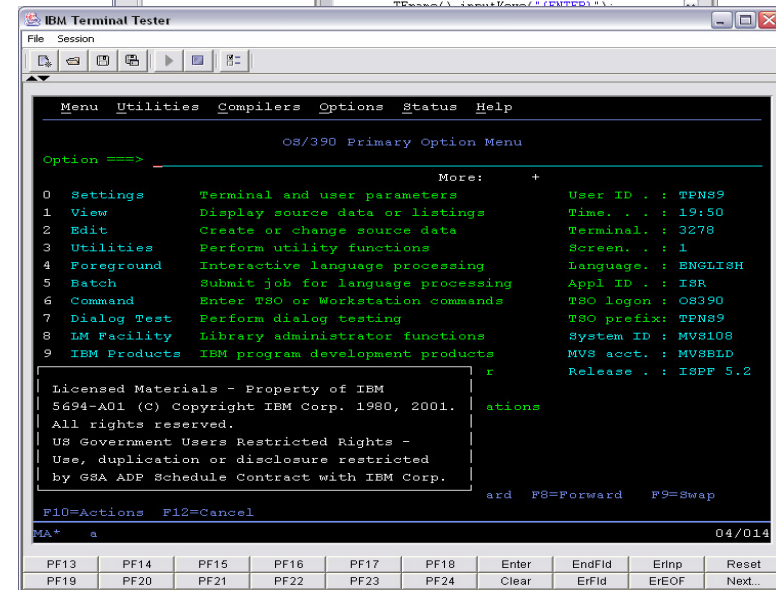
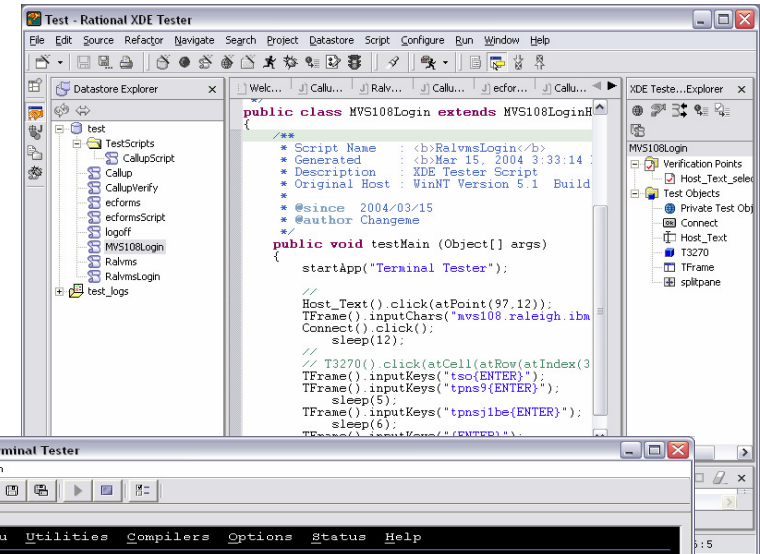
- ▶ Automated regression testing for Web, J2EE and .Net applications

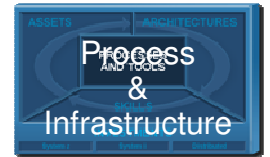
■ IBM Rational Functional Tester Extension for Terminal-based Applications

- ▶ lets you test your System z and System i terminal-based applications with the same tool – IBM Rational Functional Tester – used to test your Java, .NET and Web-based client server applications.

■ Key Benefits

- ▶ Minimize test maintenance with scripts resilient to application changes
- ▶ Wizard enhanced automation to speed test creation for the new user
- ▶ Powerful scripting language and IDE for the professional tester
- ▶ Supports Team oriented parallel development





IBM Rational Performance Tester

Test automation for the novice and the professional

- **IBM Rational Performance Tester**

- ▶ Performance problem identification and diagnosis for Web, SAP, Siebel, Oracle and Citrix based applications

- **Performance test automation**

- ▶ **Built for Day 1 Productivity**

- Mask complexity to get the job done

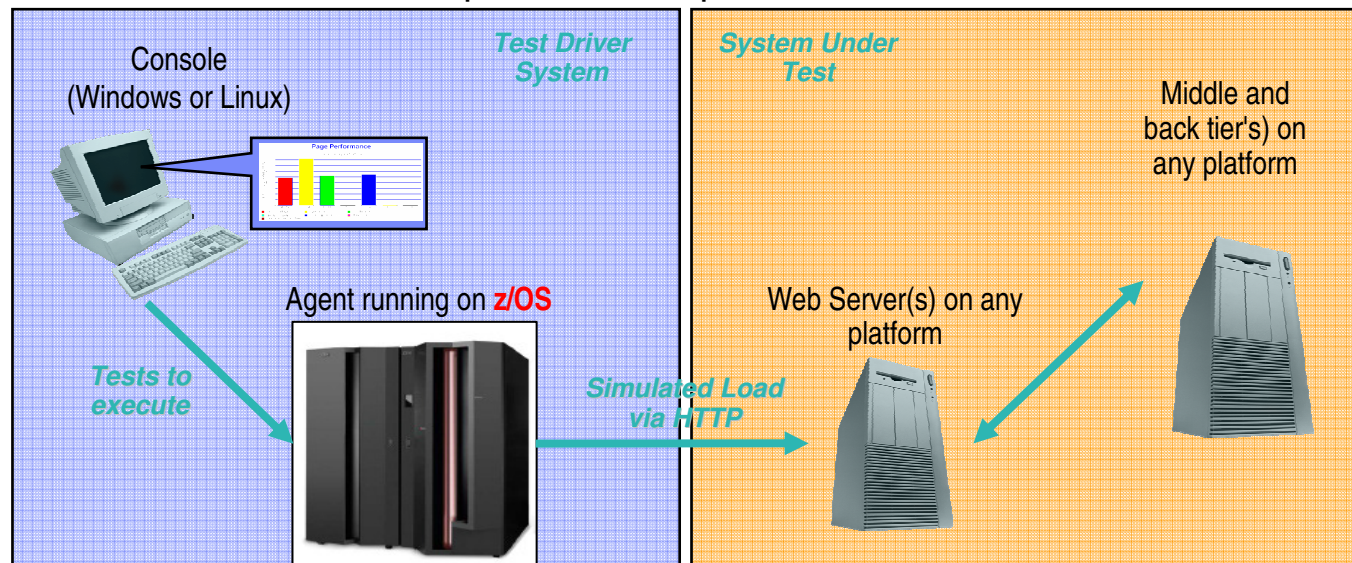
- ▶ **Advanced Data Access & Manipulation**

- Automated data variation and synchronization

- ▶ **Root Cause Analysis**

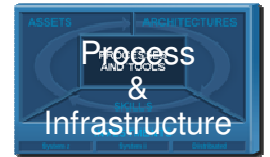
- Identifies location and **root cause** of performance problem in hardware and software

Topography of Rational Performance Tester for z/OS



Unifying enterprise and distributed teams

Generali



Challenge

- Spiraling maintenance and resource costs constrained the development organization

Solution

- Move to a standardized solution to improve developer productivity and flexibility for delivering software solutions

Products include:

- IBM Rational ClearCase



Highly automated cross-platform solution using **Rational ClearCase** to manage and support the software lifecycle for COBOL and Java development, from start to finish

Investments modernization

Redirect people and budget to pursue new opportunities



Take control of your assets

- Dramatically improve change estimate accuracy
- Reduce application maintenance time
- Reduce complexity and increase maintainability
- Componentization increases reusability, and enables SOA

Leverage modern architectures

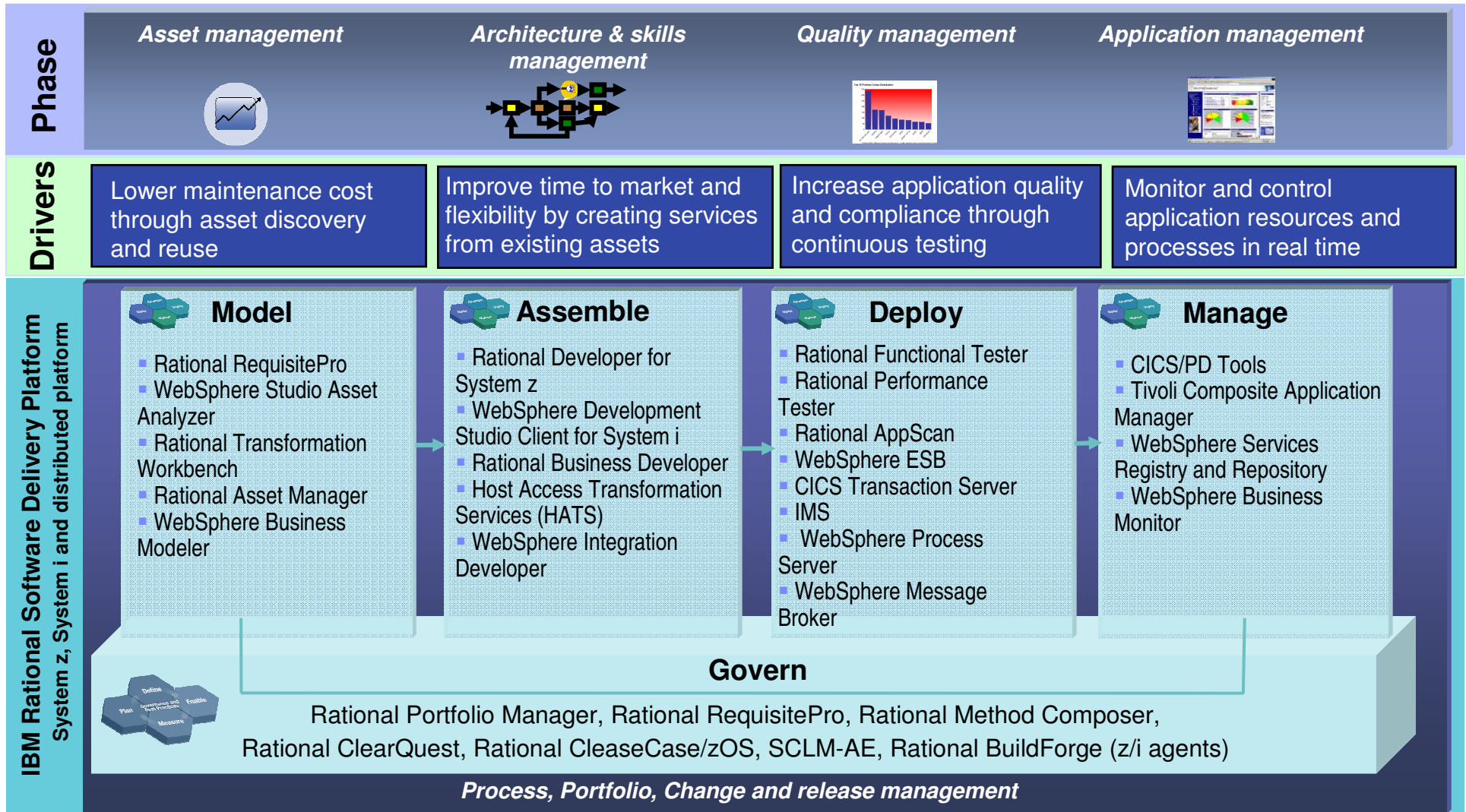
- Quickly extend existing applications to the web
- Increase developer productivity and reduce manual coding
- Save time by automating application testing
- Verify application scalability

Transition to a standard software delivery platform

- Reduce expenditure by eliminating obsolete technologies or platforms
- Reduce risk by reusing proven assets
- Leverage existing IT staff for new development
- Simplify application development

The IBM Rational Software Delivery Platform offers leading-edge, high-productivity solutions to address your enterprise modernization and SOA needs!

Accelerating Enterprise Modernization towards an SOA with the IBM Rational Software Delivery Platform



Want to learn more?

- Get this complimentary kit for mainframe developers for a practical, how-to guide for making the most of an existing development environment, including the skills and infrastructure already in place at an established enterprise.
 - ▶ Did you say mainframe? e-kit <http://www.ibm.com/developerworks/integrate/kits/mainframe/>
 - This kit contains the following:
 - **Podcast series:** Did you say mainframe?!
 - **Webcasts**
 - **Tutorials:**
 - **White and red papers:**
 - **Demos**
 - **developerWorks articles and other resources:**
- You can also find out more about other IBM Enterprise Modernization offerings at this site
 - ▶ <http://www.ibm.com/rational/modernization>



Learn more at:

- [IBM Enterprise Modernization Solutions](#)
- [IBM Rational Software Delivery Platform](#)
- [Process and portfolio management](#)
- [Change and release management](#)
- [Quality management](#)
- [Architecture management](#)
- [Rational trial downloads](#)
- [developerWorks Rational](#)
- [IBM Rational TV](#)
- [IBM Rational Business Partners](#)

© Copyright IBM Corporation 2008. All rights reserved. The information contained in these materials is provided for informational purposes only, and is provided AS IS without warranty of any kind, express or implied. IBM shall not be responsible for any damages arising out of the use of, or otherwise related to, these materials. Nothing contained in these materials is intended to, nor shall have the effect of, creating any warranties or representations from IBM or its suppliers or licensors, or altering the terms and conditions of the applicable license agreement governing the use of IBM software. References in these materials to IBM products, programs, or services do not imply that they will be available in all countries in which IBM operates. Product release dates and/or capabilities referenced in these materials may change at any time at IBM's sole discretion based on market opportunities or other factors, and are not intended to be a commitment to future product or feature availability in any way. IBM, the IBM logo, the on-demand business logo, Rational, the Rational logo, and other IBM products and services are trademarks of the International Business Machines Corporation, in the United States, other countries or both. Other company, product, or service names may be trademarks or service marks of others.

Questions

