



DEPARTMENT OF INFORMATION TECHNOLOGY

City and County



of Honolulu

The Mainframe is DEAD! Long Live the Enterprise Server

Gordon J. Bruce (MBA)
Director/CIO City and County of Honolulu

City and County of Honolulu



City and County of Honolulu
640+ Square Miles
Comprised of the Entire
Island of Oahu



- Population ~ 950,000
- 10th Largest County in U.S.A






1	New York	8,175,133
2	Los Angeles	3,792,621
3	Chicago	2,695,598
4	Houston	2,099,451
5	Philadelphia	1,526,006
6	Phoenix	1,445,632
7	San Antonio	1,327,407
8	San Diego	1,307,402
9	Dallas	1,197,816



10	Honolulu	953,207
-----------	-----------------	----------------



11	San Jose	945,942
12	Jacksonville	821,784
13	Indianapolis	820,445
14	San Francisco	805,235
15	Austin	790,390

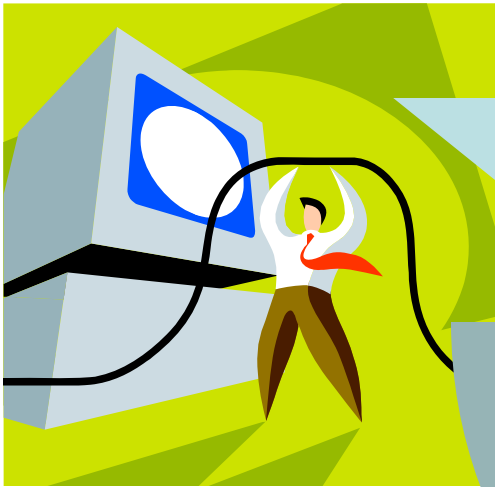
Census 2010

City & County of Honolulu Agencies

- Budget and Fiscal Services
- Community Services
- Corporation Counsel
- Customer Service
- Design & Construction
- Emergency Management
- Emergency Services
- Enterprise Services
- Environmental Services
- Facilities Maintenance
- Fire / Police
- Human Resources
- Information Technology
- **State of Hawaii Systems**
- Medical Examiner
- Parks and Recreation
- Planning and Permitting
- Prosecuting Attorney
- Royal Hawaiian Band
- Transportation Services
- Board of Water Supply
- **Honolulu Authority for Rapid Transit**
- Economic Development
- Office of Housing
- Neighborhood Commission
- Culture and the Arts

The Vision

Smarter Citizen



data

innovation

information = insight



Smarter City

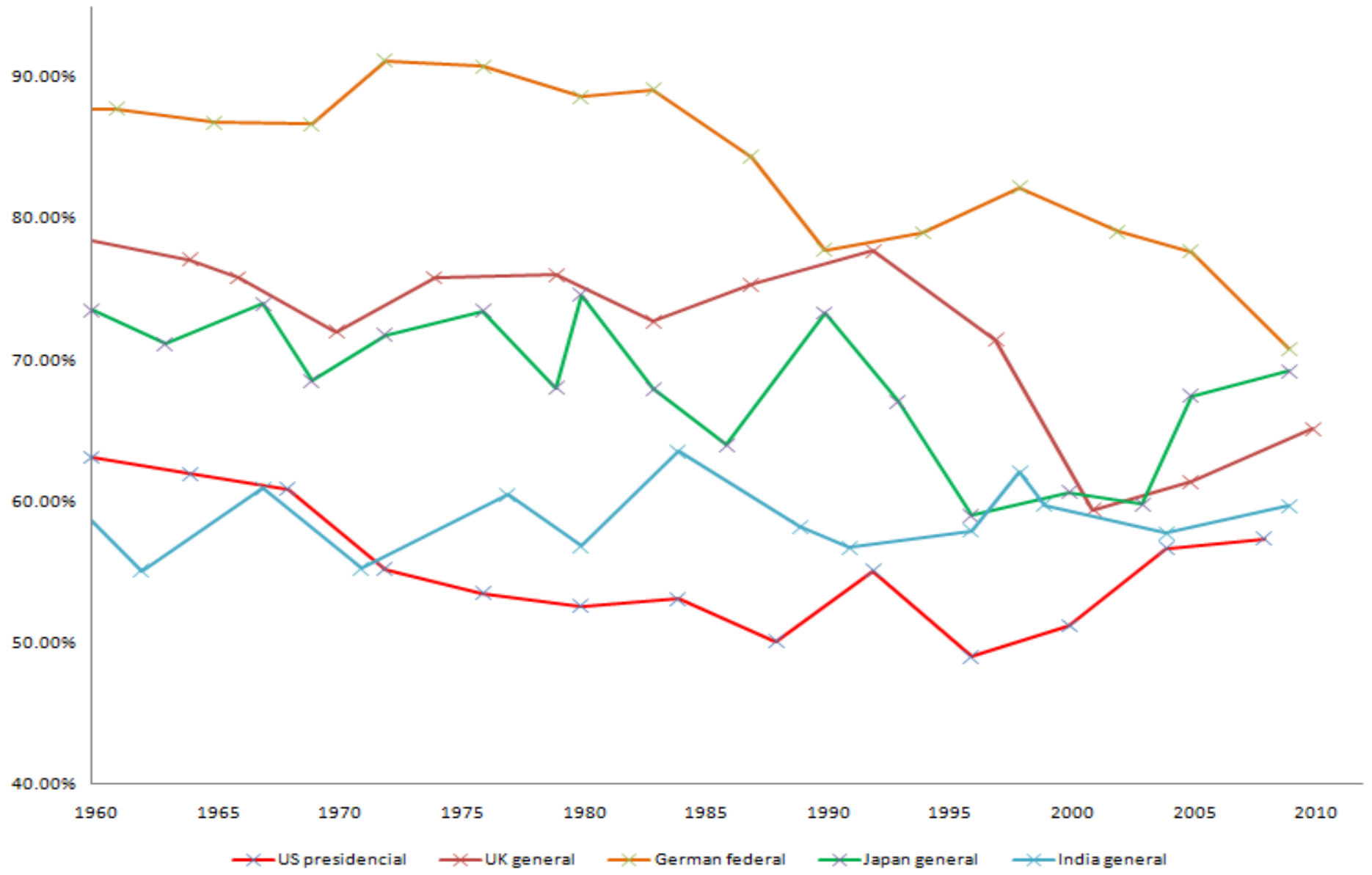
Trust in Government

Experience

“The Budget should be balanced!
The Treasury should be refilled!
Public Debt should be reduced!
The arrogance of officialdom should be
controlled...assistance to foreign lands
should be curtailed lest (we) become
bankrupt...”

~Cicero in Rome 55 B.C.

Government Metrics = Voter Turnout



Government: There is NO MORE Money!

SHERIFFS
Reolider Camera © 11/25/08
CREATORS SYNDICATE
www.sherrif.com



Honolulu City-Wide Debt Service

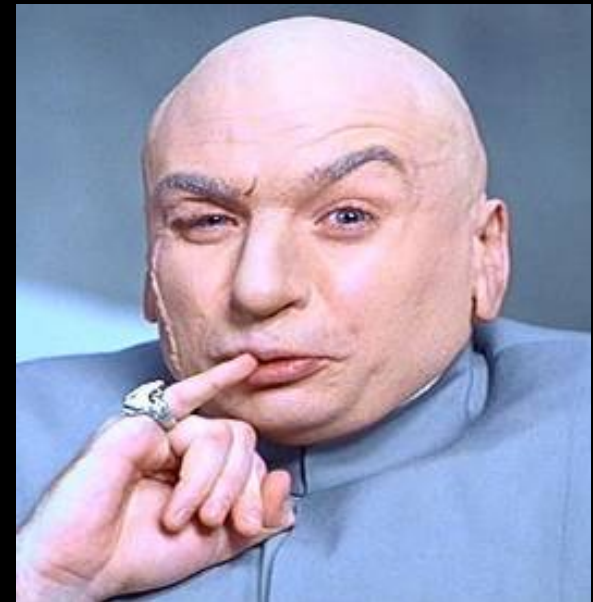
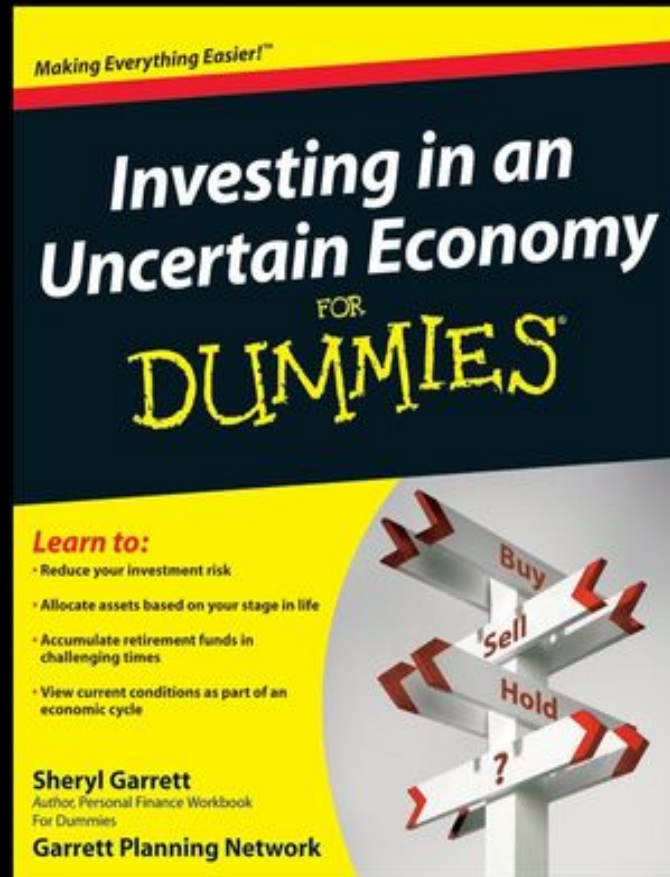
(Millions)



Today – Put it Simply

Economic Crisis

Loss of Confidence in Government/Business Leadership



From an IT Perspective

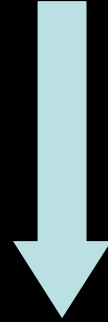
- Massive change for enterprises
- Implications for IT leaders is unsettling
- Opportunity: Smart IT = Smart Reuse



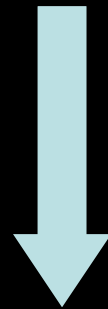
How Does IT Pull IT Off



(NY Yankees) Rich Teams (Private Sector)



Poor Teams
(50 Feet of CRAP)



Oakland A's (Government)

Geek Vision



“If we pull this off, we change the game. We change the game for Good.”

~ Billy Beane

Geek Execution



“ Your goal shouldn't be to buy players. Your goal should be to buy wins. In order buy wins, you need to buy runs.”

~ Peter Brand

Attain the Vision

7 Steps to Reduce the CRAP

- Change the CRAP out of how government conducts its business
- Risk the CRAP out of your political career as an appointee
- Antagonize the CRAP out of the Citizen to get them engaged
- Progress occurs and the CRAP starts to flow... if you get my drift

1. Leadership

“During my 14 years as Mayor of the City and County of Honolulu, I have watched this island experience an unparalleled population growth. I have had a deep and growing concern about the effects of this growth upon the operational and social responsibilities of our local government. No such government today, with its obligation to the taxpayer, can afford to be responsive to the needs of its constituents without the adoption of the newest and most modern technical innovations.

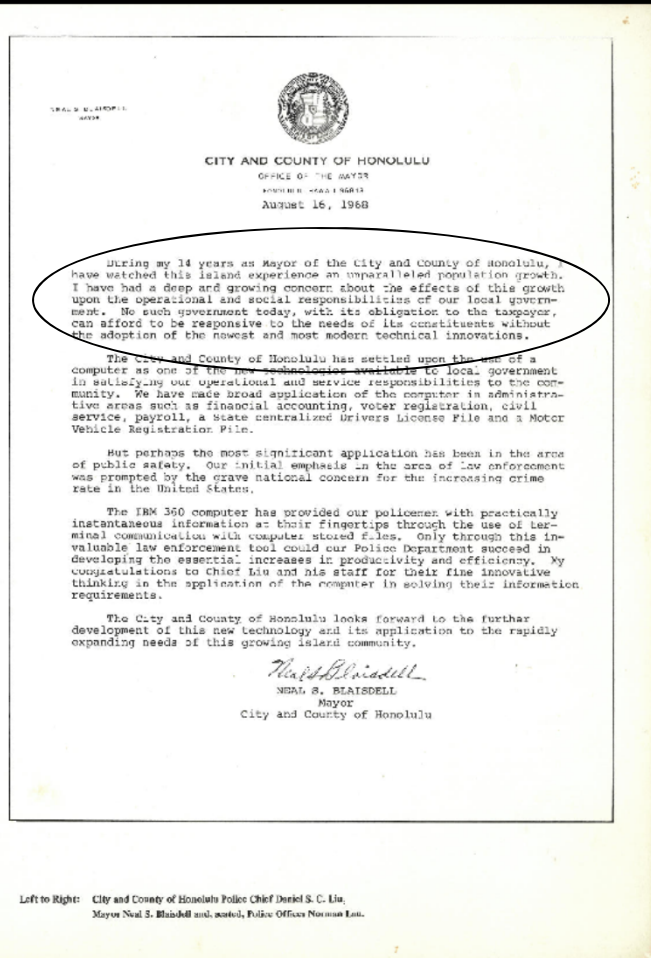
The City and County of Honolulu has settled upon the use of a computer as one of the new ~~techniques~~ ~~available~~ ~~to~~ local government in satisfying our operational and service responsibilities to the community. We have made broad application of the computer in administrative areas such as financial accounting, voter registration, civil service, payroll, a State centralized Drivers License File and a Motor Vehicle Registration File.

But perhaps the most significant application has been in the area of public safety. Our initial emphasis in the area of law enforcement was prompted by the grave national concern for the increasing crime rate in the United States.

The IBM 360 computer has provided our policemen with practically instantaneous information at their fingertips through the use of terminal communication with computer stored files. Only through this invaluable law enforcement tool could our Police Department succeed in developing the essential increases in productivity and efficiency. My congratulations to Chief Liu and his staff for their fine innovative thinking in the application of the computer in solving their information requirements.

The City and County of Honolulu looks forward to the further development of this new technology and its application to the rapidly expanding needs of this growing island community.

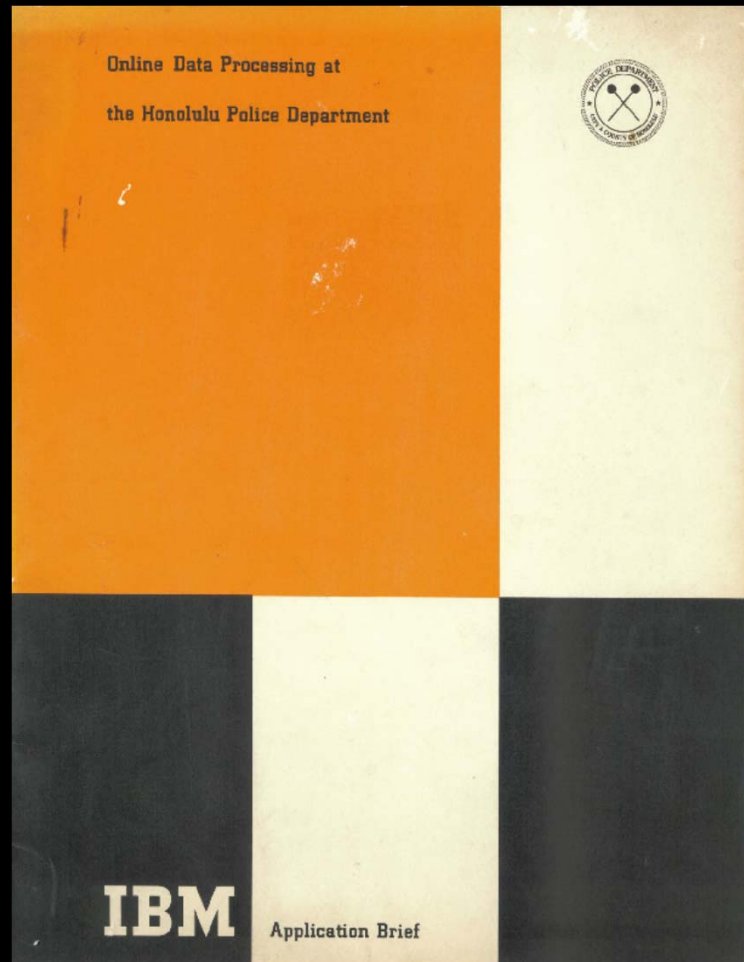
Mayor Blaisdell 1968



Left to Right: City and County of Honolulu Police Chief Daniel S. C. Liu, Mayor Neal S. Blaisdell and, seated, Police Officers Norman Lee.



Drivers Licensing / Motor Vehicle Registration IBM System 360



DEPARTMENT OF

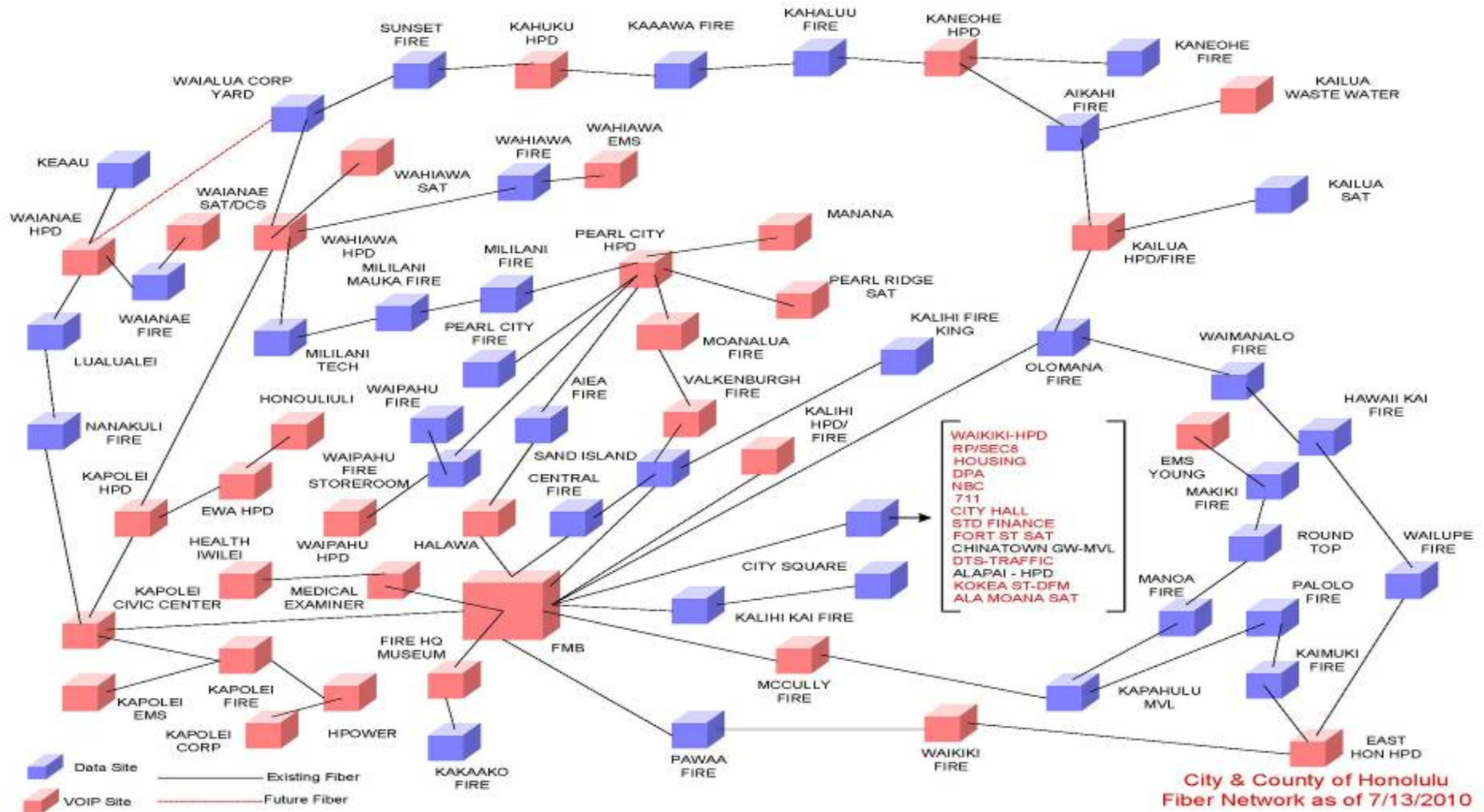


INFORMATION TECHNOLOGY

2. Re-evaluate Your Technology Architecture



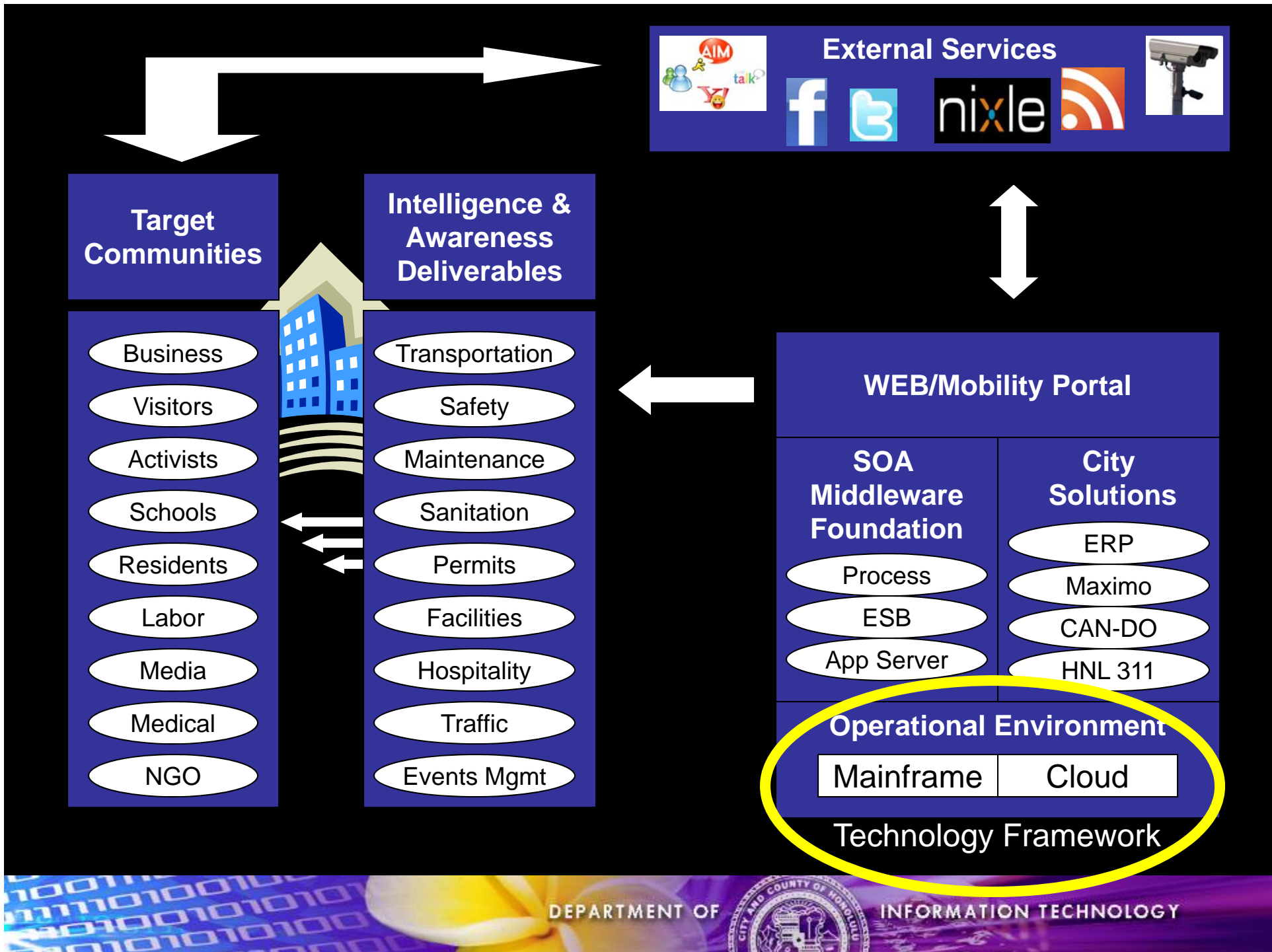
Network/Security Infrastructure Build on It – VOIP/VTC/Cloud



3. Determine What Drives Your Business

- **Dispersed Customer/Citizen Demand**
 - Drive to satisfy the need of dispersed customers/colleagues
 - Dispersed customers/colleagues use more than one company product
 - **Centralized IT provides coherent view**
 - Business Outcome: Increased revenue, reduced costs, high value





4. Exploit the Obvious



System Z
With IFL



DS8100



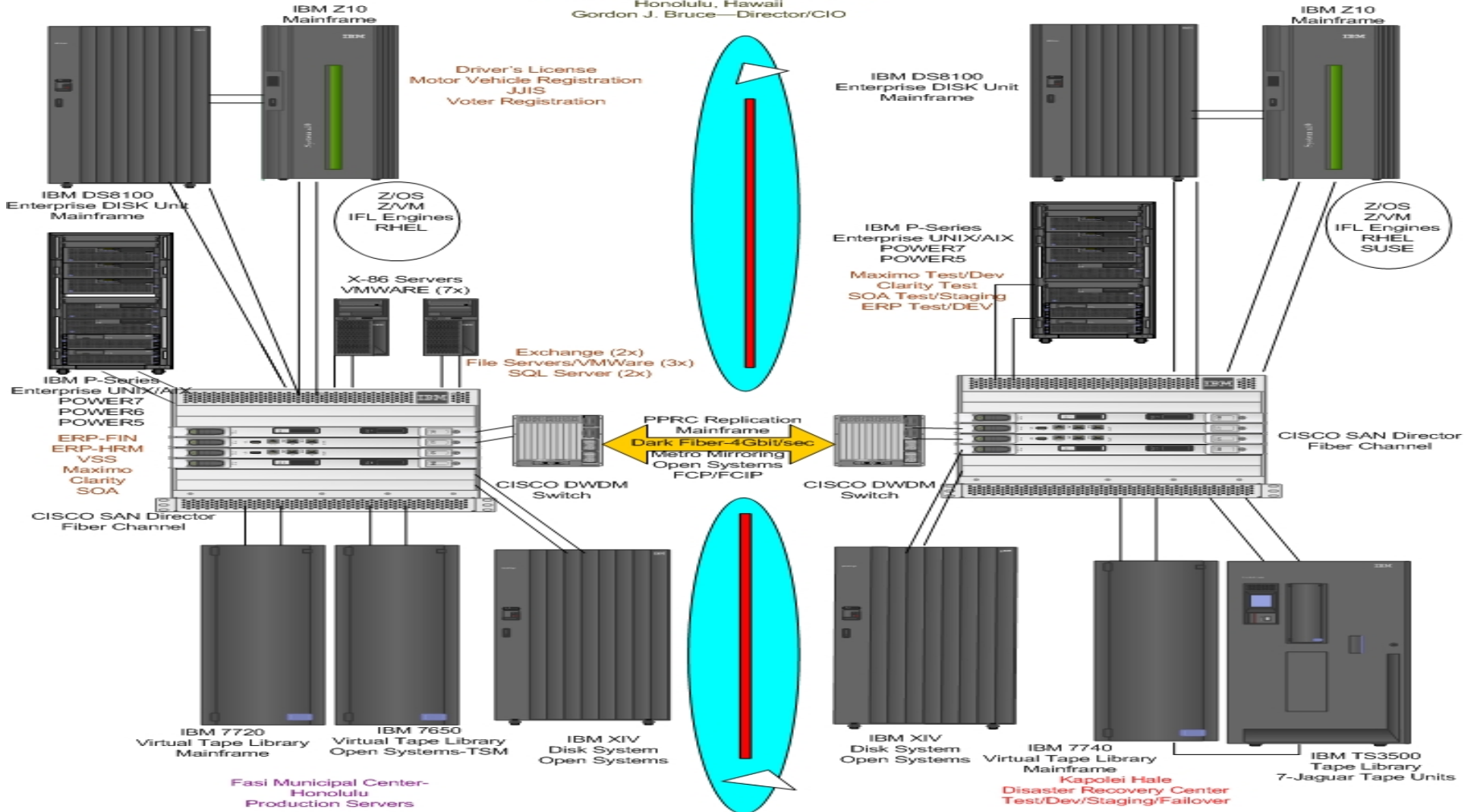
XIV SAN

- Evaluate MF Strategy
- Develop Migration Plan
- Partner IBM/Sirius
- Test
- Deploy (Z9 Lease)
- Upgrade (Z10 Lease)
- Enhance (IFL)
- Upgrade/Upgrade/Up

**Drivers Licensing / Motor
Vehicle Registration Since
1968... How's that ROI**

Architecture

City and County of Honolulu
 Department of Information Technology
 Honolulu, Hawaii
 Gordon J. Bruce—Director/CIO



5. Identify Waste

■ Efficiency

- Desire to reduce costs
- Standardize/Centralization of corporate and IT decisions
- Eliminate redundancies, conflicting processes and duplications
- Need to integrate business processes with centralized IT
- Maximize what you already have invested in
 - People/Hardware/Software



It's always comforting
seeing taxes well spent.

6. Be a Visionary

- Virtual Desktop
 - Successful Pilot
 - Apps Migrated
- Expand Use of IFL
 - Oracle
 - Maximo
 - Red Hat Linux
 - SUSE
- Open Source
 - Ruby on Rails
 - Cloud
 - Google Docs
 - Open Office
- Upgrade (AFM)
 - Enhance (X86)

The Twitter logo is displayed in its characteristic blue, lowercase font.

Login Join Twitter!

Welcome to Twitter, @Microsoft!

12:44 AM Jul 2nd from TwitterFox



Linux

© 2009 Twitter About Us Contact Blog Status Apps API Search Help Jobs Terms Privacy



7. Risk Adverse

- **Provide Better Information**
 - Allows people to make better decisions
 - Provides more accurate, more timely info
 - OR just more info than the business or client had before



<http://can-do.honolulu.gov/documents/search>

Citizen Engagement – Save \$/Find \$

Home Apps Documents About FAQ Find public documents SEARCH



CAN-DO HONOLULU.gov

Honolulu wants to hear from its citizens
Learn more about CAN-DO Honolulu »

Apps Docs

Discover CAN-DO



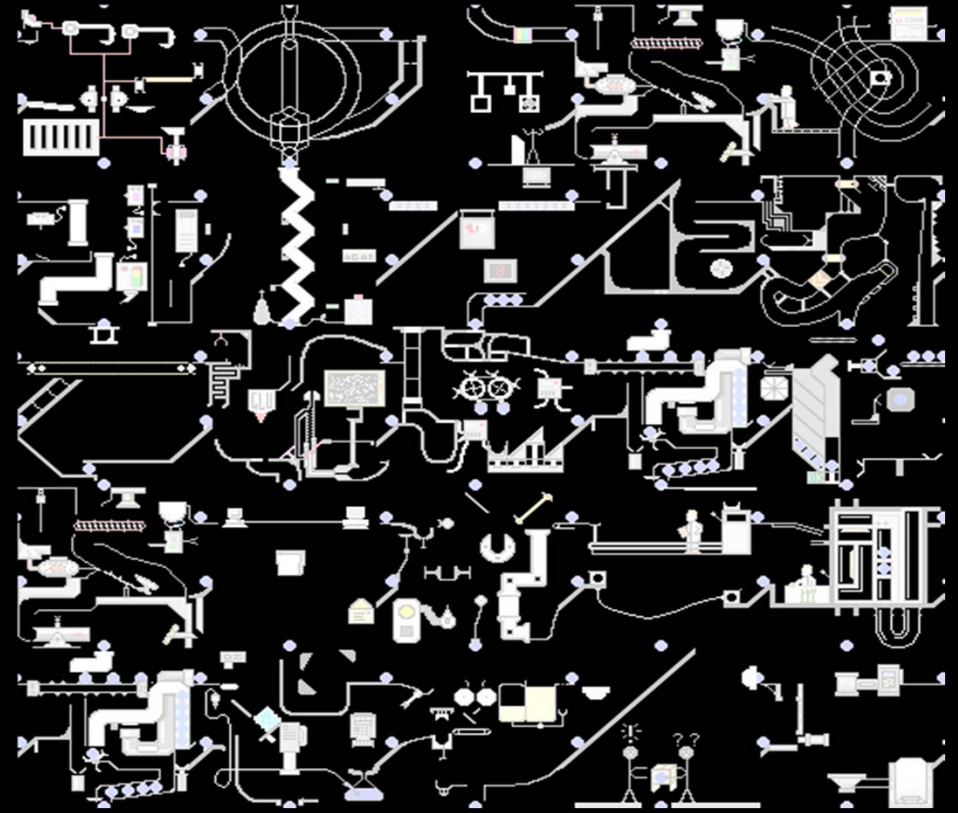
“We need to be a lean, clean, smart city that is looking to tomorrow.”

Mayor Peter Carlisle
Inauguration Speech - Oct 2010

Smarter Processes

■ Improve Processes

- Reduces costs
- Speed deliverables and output
- IT is used to overhaul the way you do business
- IT improves effectiveness, efficiencies



<http://can-do.honolulu.gov/apps>

Smarter Experience

- Enhance the Citizen Experience
 - Data can be used to cement a relationship
 - Personalize
 - IT has colleague (business) and customer data

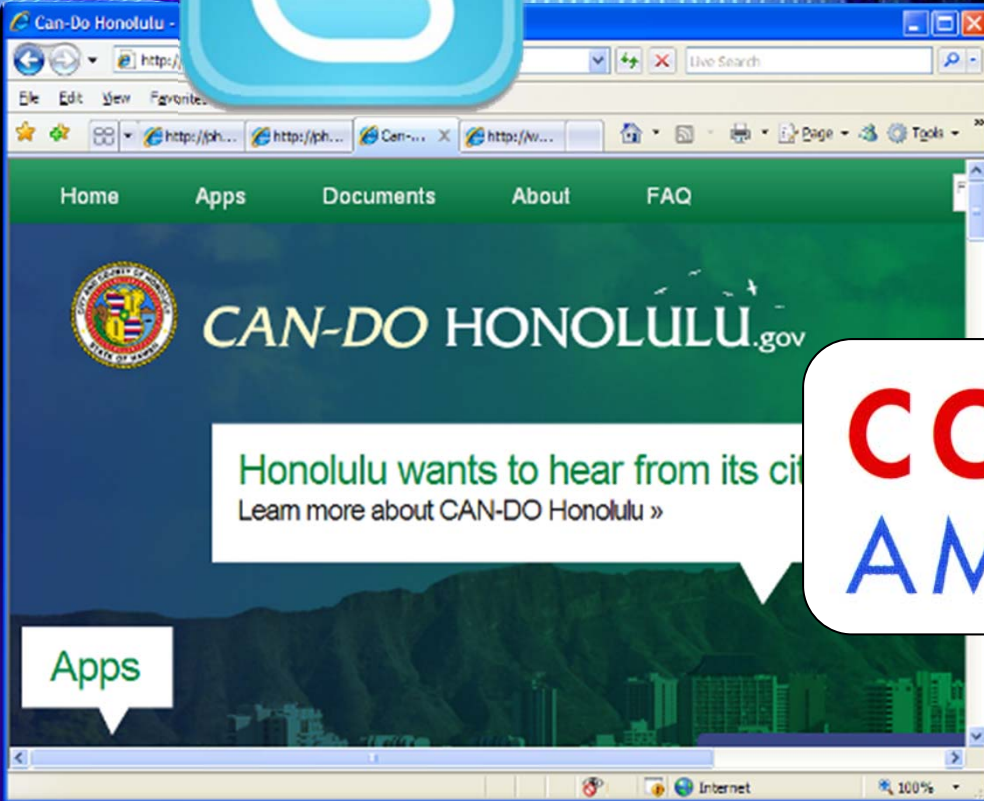


Deliver Measurable Improvements

- “We put a system in that turned....
- “We put this in and it drove more....
- “We put this in and it found....
- “We put this in and in enabled....
- “We put **your smart phrase here**
- DELIVERABLE and MEASURABLE!!!

Innovation

nixle



CODE for AMERICA



The Challenge/Opportunity

- No qualified staff
- No local training
- Train in house
- IBM Academic Initiative
- HPU – Master the Mainframe Competition



NO EXPERIENCE NECESSARY.
JUST A DESIRE TO WIN GREAT PRIZES!

MASTER THE MAINFRAME:

An Enterprise Systems Contest

No experience with mainframes is necessary. In fact, the contest is designed for students with little or no mainframe experience. You just need to bring drive and a competitive spirit.

PRIZES INCLUDE:

- Samsung Galaxy Tab 10.1
- \$100 pre-paid debit cards
- Trips to the mainframe lab in Poughkeepsie, NY
- Custom Master the Mainframe T-shirts



Enrollment begins: 9/6
Contest takes place: 10/3 – 12/28

To sign up, visit:
ibm.com/university/contest

DEPARTMENT OF



INFORMATION TECHNOLOGY



“Unlike many of its mainland peers, Honolulu remains financially strong due to its diversified economy, stable revenue base and proven conservative management.”





“The City’s continued success at controlling costs and its considerable financial flexibility underlie these strengths.”



November 2011



AA+
Bond Rating •
Outlook Stable



Work Magic With What You Have



MAHALO

- 71% Fortune 500 are System Z
- All 25 World Banks use Mainframe
- 9 out of 10 Health Ins. Providers use the Mainframe
- Many Governments – including ours