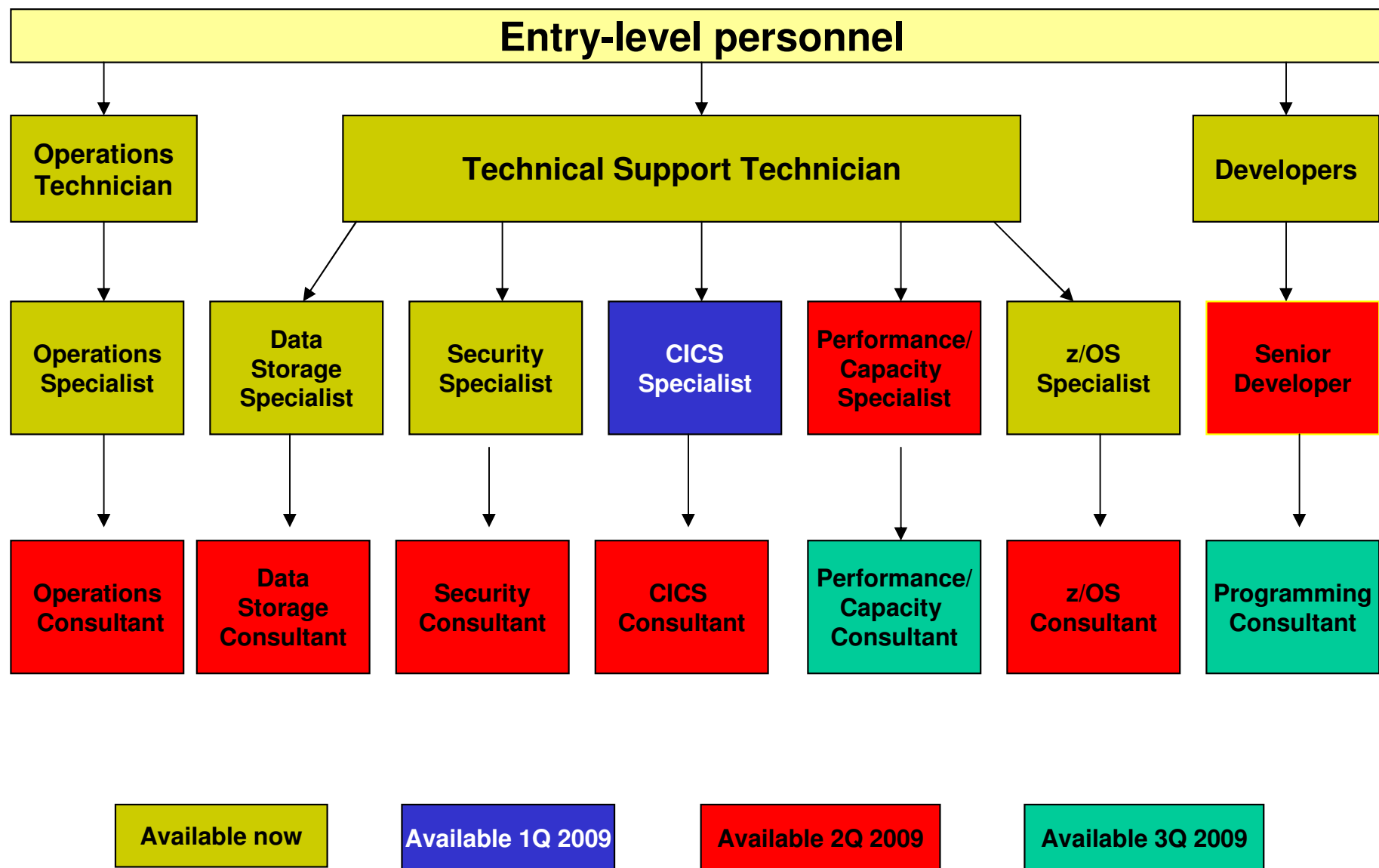
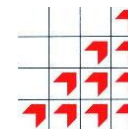
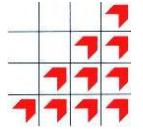


**BCS MTP™**  
**(Mainframe Technology Professional)**  
**certification & accreditation**  
**for IBM Mainframe Professionals**  
**([www.bcsmtp.com](http://www.bcsmtp.com))**

# BCS MTP development status



# Level 1 z/OS Support – Day 1

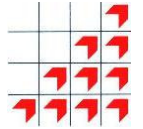


Day 1			
<u>Discipline</u>	<u>Duration</u>	<u>From</u>	<u>To</u>
Mainframe Computing	01:30	09 30	11 00
Break	00:20		
TSO	01:30	11 20	12 50
Lunch	01:00		
z/OS Concepts	01:15	13 50	15 05
Break	00:20		
REXX (Optional**)	02:00	15:25	17:25

Practical exam

\*\*Extra credits

# Level 1 z/OS Support – Day 2

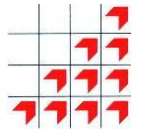


Day 2			
<u>Discipline</u>	<u>Duration</u>	<u>From</u>	<u>To</u>
JCL	02:15	09 30	11 45
Break	00:20		
RACF (Optional)	00:40	12 05	12 45
Lunch	00 45		
Debugging (Optional**)	01 30	13 30	15 00
break	00 15		
VSAM (Optional**)	02:00	15 15	17 15

Practical exam

\*\*Extra credits

# Level 2 z/OS Support – Day 1

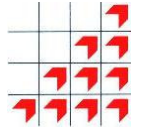


Day 1			
Discipline	Duration	From	To
z/OS Fundamentals	01:00	09 30	10 30
Break	00:20		
JCL adv. funct & Util	02:00	10 50	12 50
Lunch	00:40		
JES	00:45	13 30	14 15
Break	00:20		
Sysplex (mandatory)	00:45	14 35	15 20
Break	00:20		
HCD (Optional**)	01:45	15:40	17:15

**Practical exam**

\*\*At least two optional topics required

# Level 2 z/OS Support – Day 2

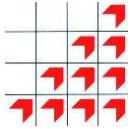


Day 2			
Discipline	Duration	From	To
SMP/E (Optional**)	02:00	09 30	11 30
Lunch	00:40		
Assembler (Optional**)	02:00	12 10	14 10
Break	00:20		
USS (Optional**)	02:00	14 30	16 30
Break	00:15		
Parallel Sysplex (optional)	00:45	16 45	17 30

**Practical exam**

\*\*At least two optional topics required

# 'Remote' Exam



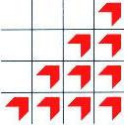
## 'Exam in a Box'

- Download to local server
- Exam taken on local server/secure local wireless network
- Manuals via IBM website
- Remote z/OS access
- Upload to BCS server on completion
- Pilot in Edinburgh successful

## 'Exam over Internet'

- Access server over secure Internet connection
- Remote z/OS access
- Manuals via IBM website
- IBM Hursley
- Preferred method

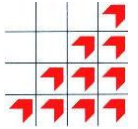
# Candidate online support



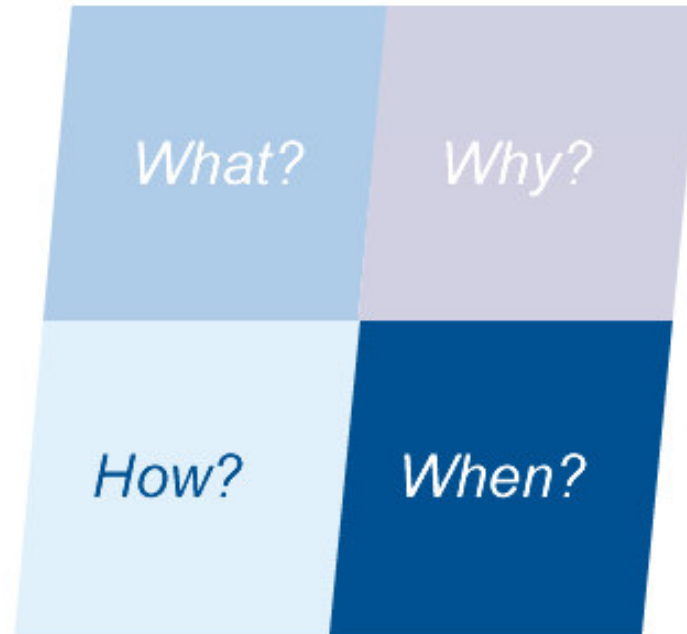
- Private section of website
- View previous results/certificates received



# Website & Exam Interface 'look'



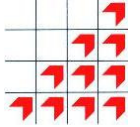
BCS Mainframe Technology  
Professional™ Qualifications



In the IT Services industry it is vital to not only have the right skills, but also to prove that you have them. These examinations do just that.

Alan Fretten,  
Head of Mainframes,  
BT Plc

# The examinations



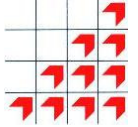
## The questions

- Multiple-choice in varied levels of difficulty
- Complex questions in varied levels of difficulty
- Practicals – hands on z/OS exercises

## The environment

- Secure
- Online marking
- Random checks on marking
- Independent non-technical invigilators

# The marking



## The marking

- Some automatic marking
- Some answer assessment (essay type)
- Some checking in z/OS

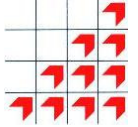
## The markers

- Subject specialists
- Accredited by BCS

## Marking objectives

- Reduce marking time without compromising MTP objectives

# Level 1 Developers



eSkills proposal for the MTP to be part of the QCF qualification, including proposed credit values

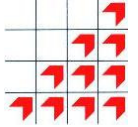
Discussions ongoing with Edexcel about how to include in their qualifications.

Natural /Adabas modules being developed for 'SSS Advanced IT Apprenticeship program'

Involvement of SSS/ Leeds College of Technology

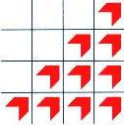
Selcopy module added

# New 'requested' exams ??

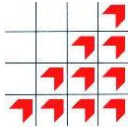


- Level 1 zAuditors
- Level 2 zAuditors
- Level 1 zArchitects [requested by IBM in USA)
- Level 2 zArchitects

# MTP Interface



# Log on



BCS MTP Examination - Microsoft Internet Explorer

File Edit View Favorites Tools Help

Back Forward Stop Refresh Home Search Favorites Recycle Bin Mail Print Taskbar

Address <http://exam.rsm.co.uk/>

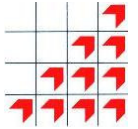
## BCS MTP Examination System

**SUBMIT**

Candidate ID

Password

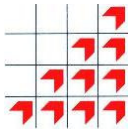
# Welcome screen



The screenshot shows a Microsoft Internet Explorer browser window. The title bar reads "MTP - Examination System - Microsoft Internet Explorer". The menu bar includes "File", "Edit", "View", "Favorites", "Tools", and "Help". The address bar shows "http://exam.rsm.co.uk/". The main content area has a yellow background with a red border. At the top, it says "MTP Examination System: welcome". Below this, there is a "Tutorial" section with the text "This module has:" followed by "4 multiple choice questions" and "2 complex questions". A red "BEGIN" button is located at the bottom of the tutorial section.



# Multiple choice



MTP - Multiple choice - Microsoft Internet Explorer

File Edit View Favorites Tools Help

Back Forward Stop Refresh Home Search Favorites Recycle Bin Mail Print

Address <http://exam.rsm.co.uk/display.php?i=0>

## BCS MTP Examination System: multiple choice

**SUBMIT**

**REVIEW**

**1** The following statements relates to the films of Alfred Hitchcock. Indicate which are true and which are false.:

Alfred Hitchcock was born in London. true  false

Alfred Hitchcock appeared in every film he directed. true  false

Frenzy was the last film directed by Alfred Hitchcock. true  false

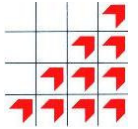
Alfred Hitchcock was born in 1870. true  false

The Man Who Knew Too Much (1956) starred James Stewart. true  false

**SUMMARY**

**NEXT**

# Multiple choice - review



MTP - Multiple choice - Microsoft Internet Explorer

File Edit View Favorites Tools Help

Back Search Favorites

Address <http://exam.rsm.co.uk/display.php?i=0>

## BCS MTP Examination System: multiple choice

**SUBMIT**

**REVIEW**

**SUMMARY**

1 The following statements relates to the films of Alfred Hitchcock. Indicate which are true and which are false.:

Alfred Hitchcock was born in London. true  false

Alfred Hitchcock appeared in every film he directed. true  false

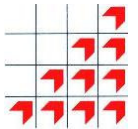
Frenzy was the last film directed by Alfred Hitchcock. true  false

Alfred Hitchcock was born in 1870. true  false

The Man Who Knew Too Much (1956) starred James Stewart. true  false

**NEXT**

# Multiple choice - summary



Untitled Document - Microsoft Internet Explorer

File Edit View Favorites Tools Help

Back Forward Stop Refresh Home Search Favorites

Address <http://exam.rsm.co.uk/summary.php>

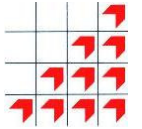
## MCP Examination System: multiple choice

**SHORT**

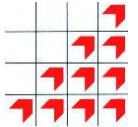
**COMPLEX**

Question Number	Marked for review	Status
1	<b>VIEW</b> <b>REVIEW</b>	<b>INCOMPLETE</b>
2	<b>VIEW</b>	<b>UN-ANSWERED</b>
3	<b>VIEW</b>	<b>UN-ANSWERED</b>
4	<b>VIEW</b>	<b>UN-ANSWERED</b>

# Section navigation



# Complex summary

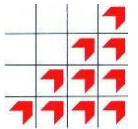


The screenshot shows a browser window titled "MTP - long questions Summary - Microsoft Internet Explorer". The address bar contains "http://exam.rsm.co.uk/summary-long.php". The page content includes a title "BCS MTP Examination System: complex questions" and a sidebar with "SHORT" and "COMPLEX" buttons. A table lists two questions, both marked as "ANSWERED".

Question Number	Marked for review	Status
1	<a href="#">VIEW</a>	<a href="#">ANSWERED</a>
2	<a href="#">VIEW</a>	<a href="#">ANSWERED</a>

[END](#)

# Complex questions



MTP Examination System - Long Questions - Microsoft Internet Explorer

File Edit View Favorites Tools Help

Back Forward Stop Refresh Home Search Favorites Recycle Bin Mail Print Window

Address <http://exam.rsm.co.uk/display-long.php?i=0>

## MTP Examination System: long questions

**SUBMIT**

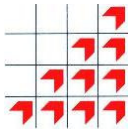
**REVIEW**

**SUMMARY**

1 Name three of the notorious Five Families of the mid-20th century New York Mafia.

**NEXT**

# Practical



MTP - Practical - Microsoft Internet Explorer

File Edit View Favorites Tools Help

Back Forward Stop Refresh Home Search Favorites Recycle Bin Mail Print Send To Favorites

Address <http://exam.rsm.co.uk/display-lab.php?i=5>

## BCS MTP Examination System: Practical

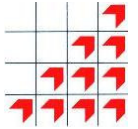
**SUBMIT**

**REVIEW**

7

1. Copy RSM00.ACCRED.UTIL into MTP<sub>xx</sub>.TOPDS1.DATA, specifying that you want all members copied, and REPLACE all like-named members. If this does not work rectify the problem and repeat the above copy. How many members were copied? Indicate your answer by selecting one of the following options:
  - 22
  - 27
  - 20
2. Copy RSM00.ACCRED.UTIL into MTP<sub>xx</sub>.TOPDS1.DATA again. Specify that ALL members are to be copied and that all like-named members are NOT to be REPLACED. How many members were copied this time? Indicate your answer by selecting one of the following:
  - 27
  - 22
  - 0

# Completing the module



MTP - long questions Summary - Microsoft Internet Explorer

File Edit View Favorites Tools Help

Back Search Favorites

Address <http://exam.rsm.co.uk/summary-long.php>

## BCS MTP Examination System: complex questions

**SHORT**

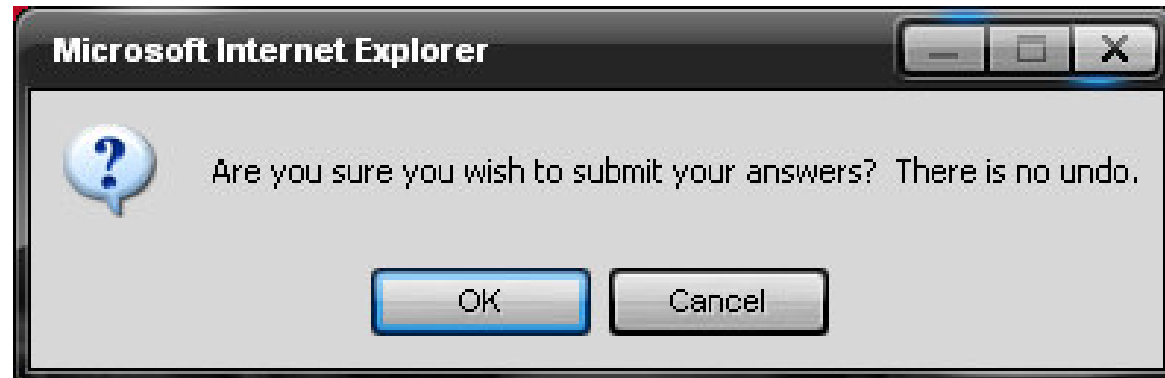
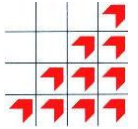
**COMPLEX**

Question Number	Marked for review	Status
1	<b>VIEW</b>	<b>ANSWERED</b>
2	<b>VIEW</b>	<b>ANSWERED</b>

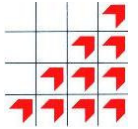
**END**



# Final submission



# Finish



Finished - Microsoft Internet Explorer

File Edit View Favorites Tools Help

Back Forward Stop Refresh Home Search Favorites

Address <http://exam.rsm.co.uk/fin.php>

## MCP Examination System

All answers submitted and recorded.