

IBM Software

Innovate2012

The Premier Event for Software and Systems Innovation

Next  NOW!

Mobile Application Development Track Keynote

*Leigh Williamson, IBM Distinguished Engineer
IBM Software Group, Rational CTO Team*



The *Mobile Shift* is what happens when people adopt and use mobile devices of their choice to engage with brands, employers, information, and each other.

Source: Forrester Research, Inc., June 2012 “Build Great Mobile Apps That Drive Engagement”



- Location becomes irrelevant.
- Customers expect to get their stuff anywhere.
- Multi-channel is the new normal.
- App intensity explodes.



Mobile is a mandatory transformation

10 Billion devices
by 2020

61% of CIOs put
mobile as priority

45% increased productivity
with mobile apps

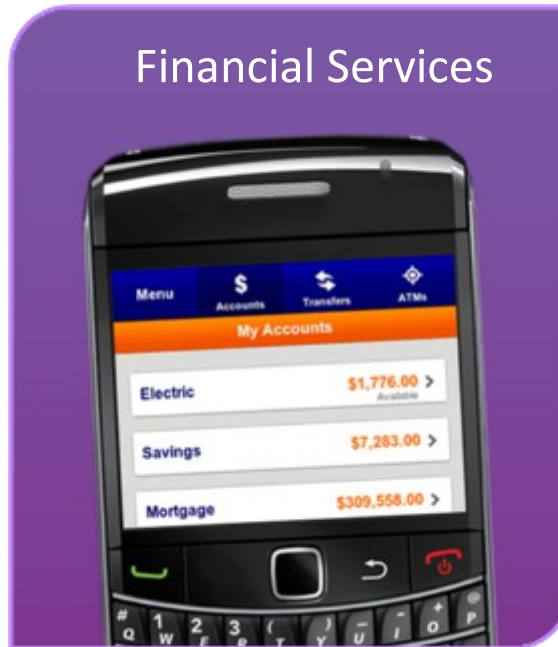


Fundamentally changing industries

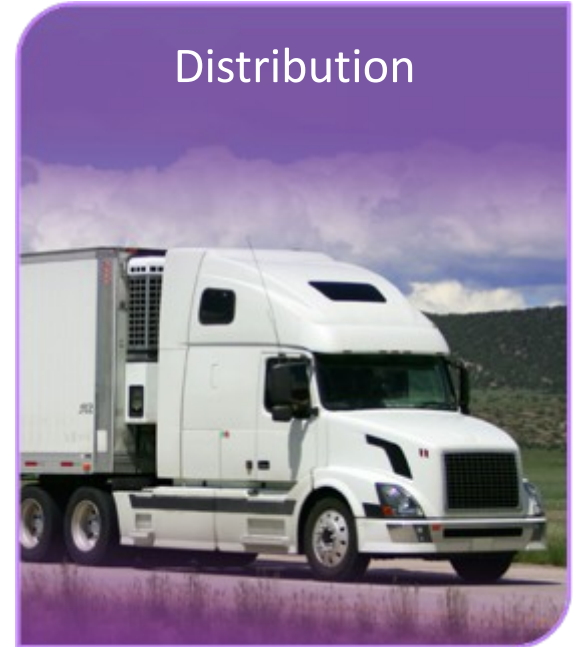
Retail



Financial Services



Distribution



Mobile banking will be the most widely used banking channel by 2020, if not sooner

Source: *Mobile banking: A catalyst for improving bank performance*, Deloitte, 2010



Augmented Reality, driven by mobile devices



360° experiences aren't just about retail and media...

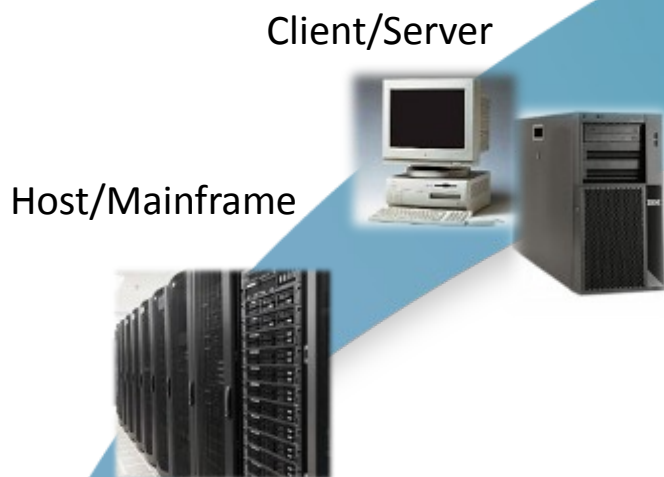
Sanofi Aventis iBG Star Blood Glucose Meter



Mobile is the NEXT dominant phase of computing

Mobile is different:

- Transformational business models
- Faster lifecycles
- More iterative



Mobile/Wireless/Cloud



IBM will play a significant part in this new era of mobile computing.

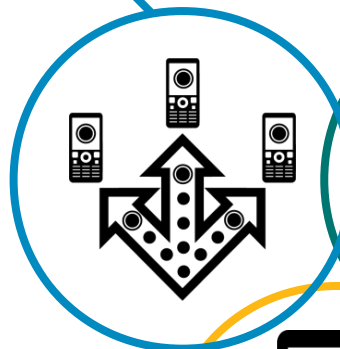


IBM's strategy addresses full range of mobile enterprise needs

Extend & Transform

Extend existing business capabilities to mobile devices

Transform the business by creating new opportunities



Build & Connect

Build mobile applications

Connect to, and *run* backend systems in support of mobile



Manage & Secure

Manage mobile devices, services and applications

Secure my mobile business

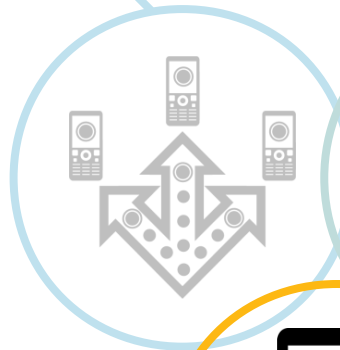


A deeper look at **Manage & Secure** capabilities

Extend & Transform

Extend existing business capabilities to mobile devices

Transform the business by creating new opportunities



Build & Connect

Build mobile applications

Connect to, and *run* backend systems in support of mobile



Manage & Secure

Manage mobile devices, services and applications

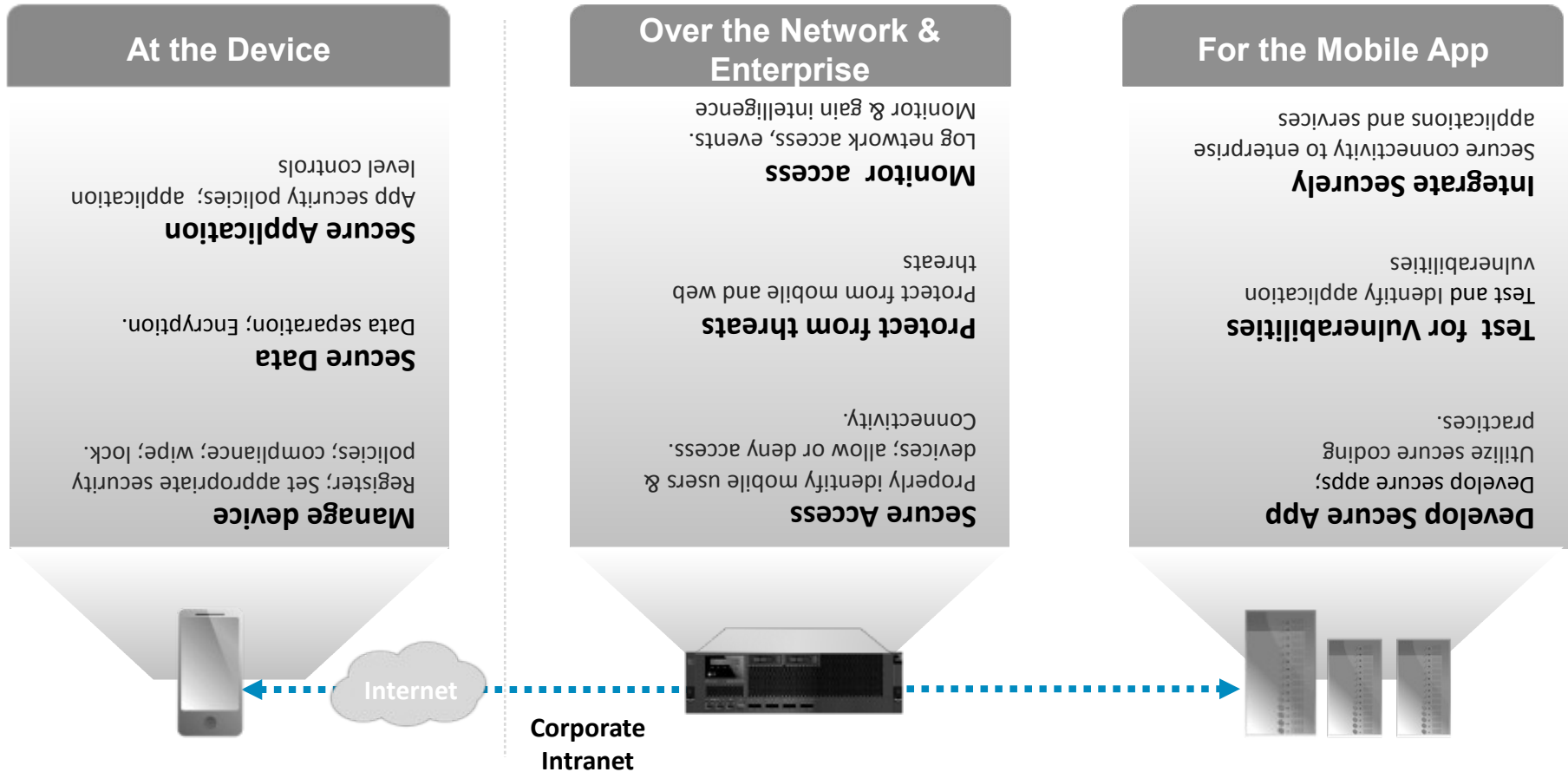
Secure my mobile business

Key Capabilities

- Mobile lifecycle management
- Device analytics and control
- Secure network communications & management



IBM Has Extensive Approach to Mobile Security



**IBM
 Mobile
 Security**

- Safe usage of smartphones and tablets in the enterprise
- Secure access to corporate data and supporting privacy
- Visibility and security of enterprise mobile platform

Strateg



A deeper look at **Extend & Transform** capabilities

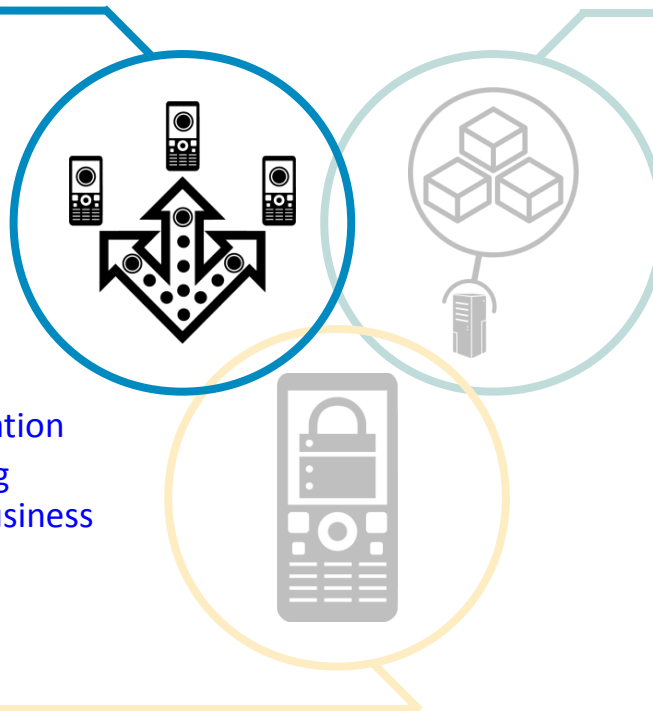
Extend & Transform

Extend existing business capabilities to mobile devices

Transform the business by creating new opportunities

Key Capabilities

- Strategy, planning and implementation
- Mobile-enabled solutions including analytics, commerce, and social business
- Mobile as a service



Build & Connect

Build mobile applications

Connect to, and *run* backend systems in support of mobile

Manage & Secure

Manage mobile devices, services and applications

Secure my mobile business

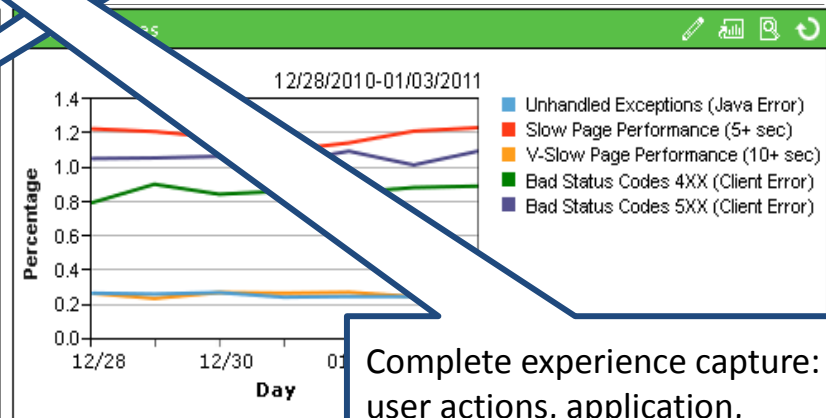
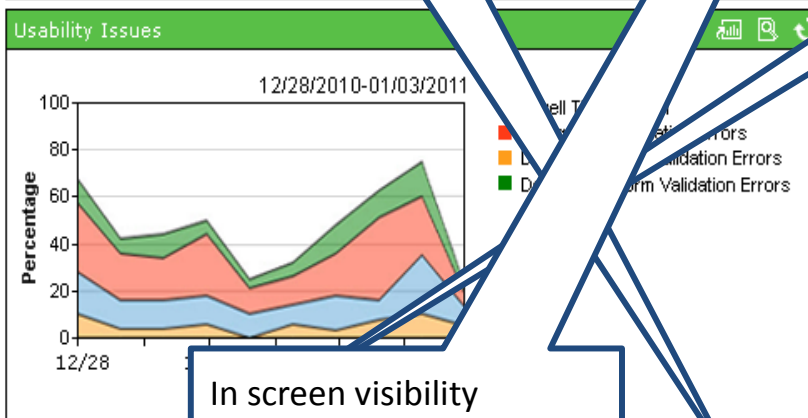
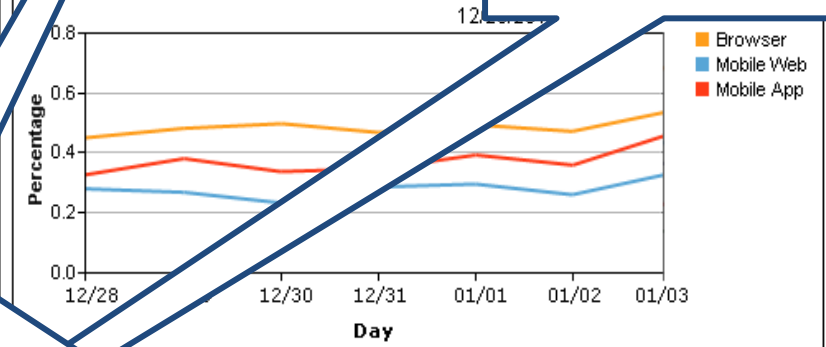
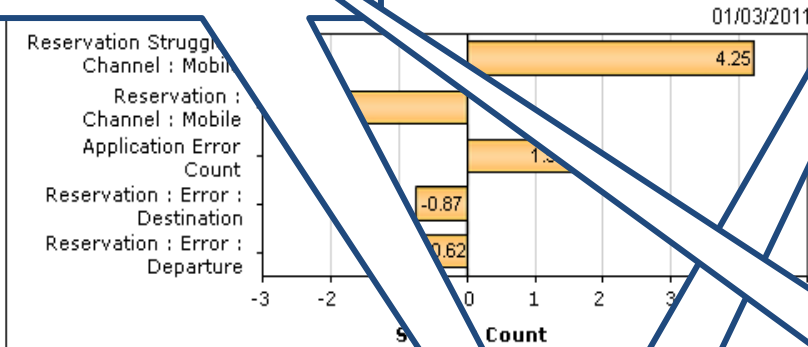


Tealeaf CX Mobile: Mobile dashboard

Discover what's working and what isn't – and WHY

Automatic detection of mobile customer struggle

Cross channel analytics: web, app, mobile site



In screen visibility (orientation, swipe, form entry, clicks) to track usability issues

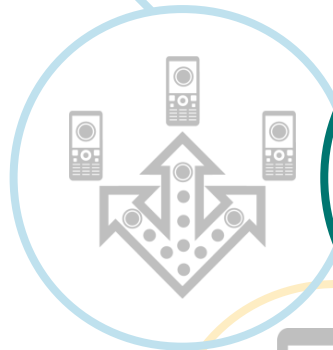
Complete experience capture: user actions, application, environmental and network data

A deeper look at Build & Connect capabilities

Extend & Transform

Extend existing business capabilities to mobile devices

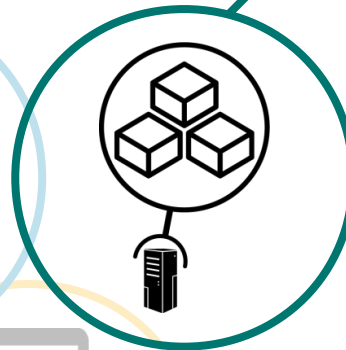
Transform the business by creating new opportunities



Build & Connect

Build mobile applications

Connect to, and *run* backend systems in support of mobile



Key Capabilities

- Mobile web, hybrid and native app development
- Enterprise data, service, and application integration
- Complete development project lifecycle management

Manage & Secure

Manage mobile devices, services and applications

Secure my mobile business



Developing for multiple mobile platforms

IBM Worklight Open, cost-effective, cross-platform mobile app development

App development using native and/or familiar web technologies:

- HTML5
- CSS3
- JavaScript



App delivery in variety of forms:

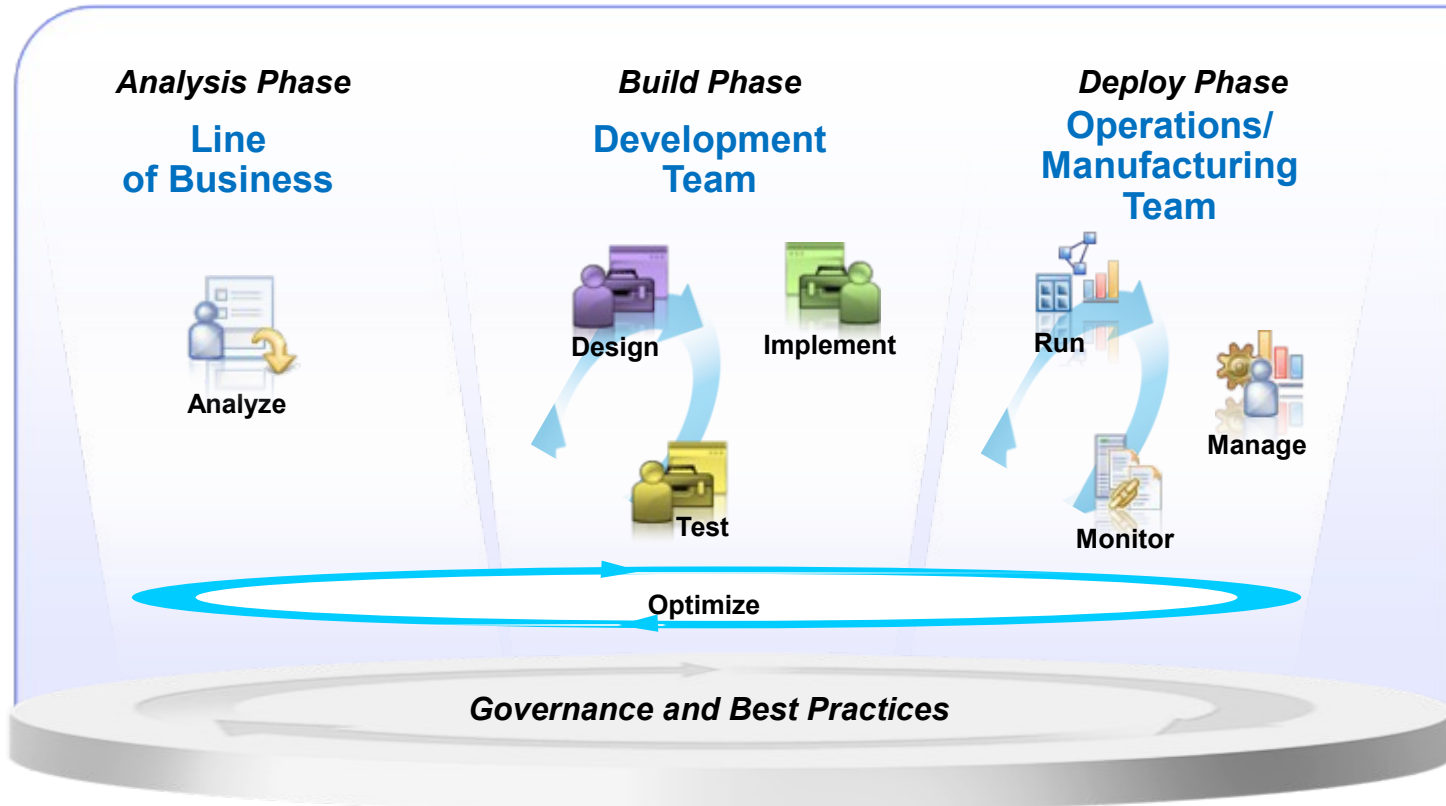
- Mobile Web app
- Hybrid app
- Native



Compatible with prominent HTML5 libraries and tools:



Mobile development is more than just coding ...



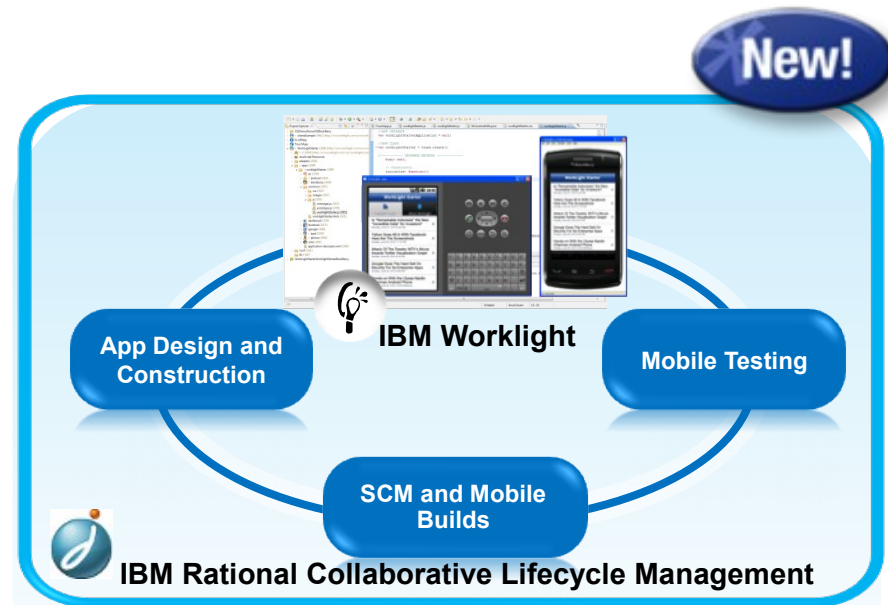
Coding is just one component of the mobile application development lifecycle



Enact a collaborative, multi-platform mobile development lifecycle

IBM Mobile Development Lifecycle Solution

- IBM plans to introduce a comprehensive mobile development solution in 4Q 2012 combining:
 - **Enterprise-grade, standard-based mobile application platform** supporting native, hybrid and mobile web programming models
 - **Best-of-class** collaborative mobile application development lifecycle capabilities



IBM Mobile Development Lifecycle Solution highlights:

- Advanced IDE for native, hybrid and mobile web applications
- Distributed team build and test integrations with the IBM Mobile Platform
- “Mobile device-cloud” service integration for on-device testing
- Mobile development best practices and tested integrations to accelerate productivity
- Support for Agile methodologies for dealing with fast-paced development for mobile

IBM's statements regarding its plans, directions, and intent are subject to change or withdrawal without notice at IBM's sole discretion. Information regarding potential future products is intended to outline our general product direction and it should not be relied on in making a purchasing decision. The information mentioned regarding potential future products is not a commitment, promise, or legal obligation to deliver any material, code or functionality. Information about potential future products may not be incorporated into any contract. The development, release, and timing of any future features or functionality described for our products remains at our sole discretion.



Focus on user experience first to achieve outside-in design

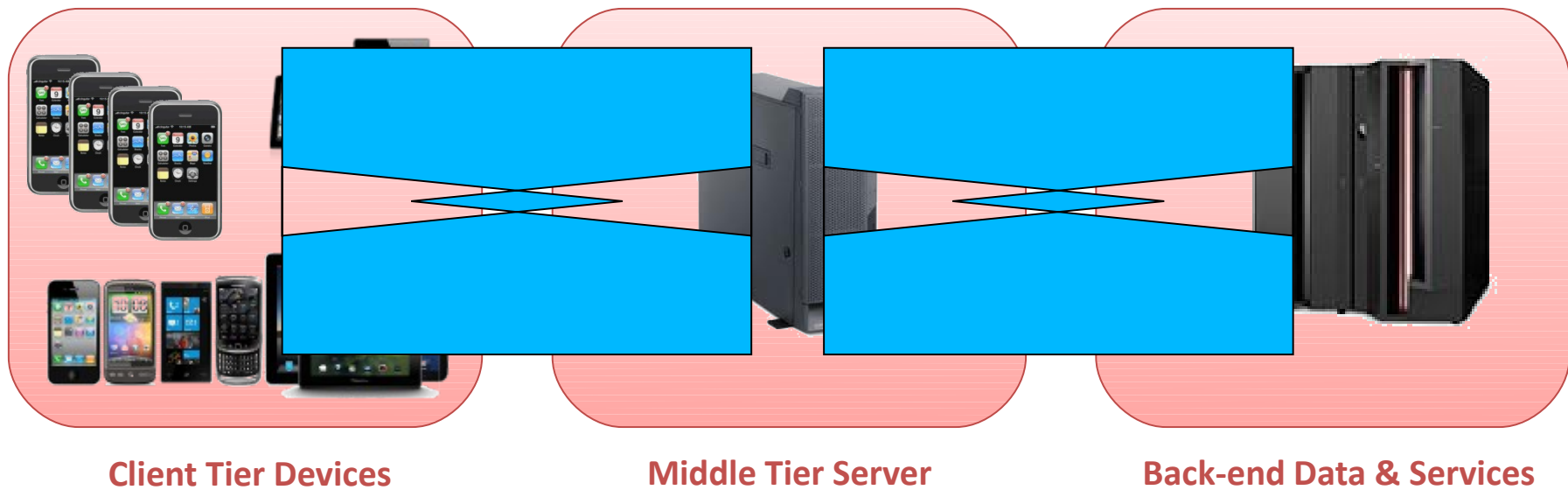
1 The app displays the Dividend Contribution screen

2 The user selects Choose an account to pay from

- ✓ Collaborate as a team using comments and annotations
- ✓ Get feedback from non-technical stakeholders



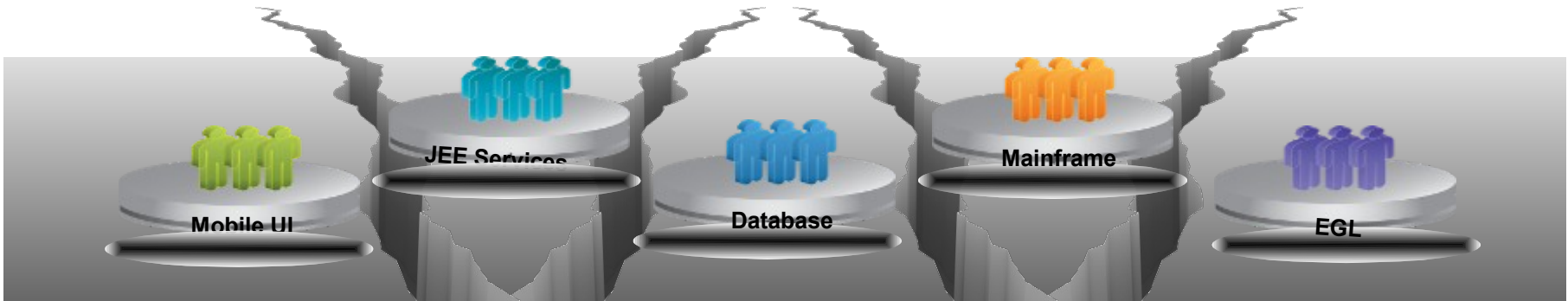
Testing the end-to-end mobile solution



Testing involves much more than just the mobile front-end



Integrating with existing systems



Mobile applications need to connect to enterprise back-end data and services

Existing programs and services may need to be modified for the mobile app

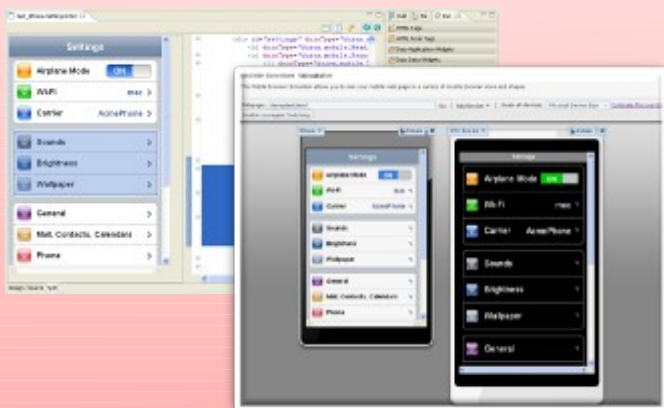
Multiple skills will be involved, responsible for different parts of the mobile application



IBM Integrated Development Environments with IBM Worklight

Extend existing back-end services and data to mobile apps

Integrated multi-platform development environments



Construct, debug, and test mobile user interfaces



Refactor and extend existing logic on enterprise platforms (System z, Power) as mobile-consumable services



Mobile software development is a team sport

- Software development **involves a team of people** with diverse skills using different tools
 - Design, development, test, operations, etc.
- Tools can make or break collaboration
 - Fragmented tools create silos
 - Integrated tools break down barriers
- Effective development depends on ...
 - Defined goals
 - Transparency of progress and quality trends
 - **Aligning teams across the entire application development lifecycle**



An integrated foundation for mobile development



Mobile Application Platform
Vendors



Application Lifecycle
Management Vendors

IBM provides the only integrated mobile development solution.
Mobile application platform construction tools and lifecycle management

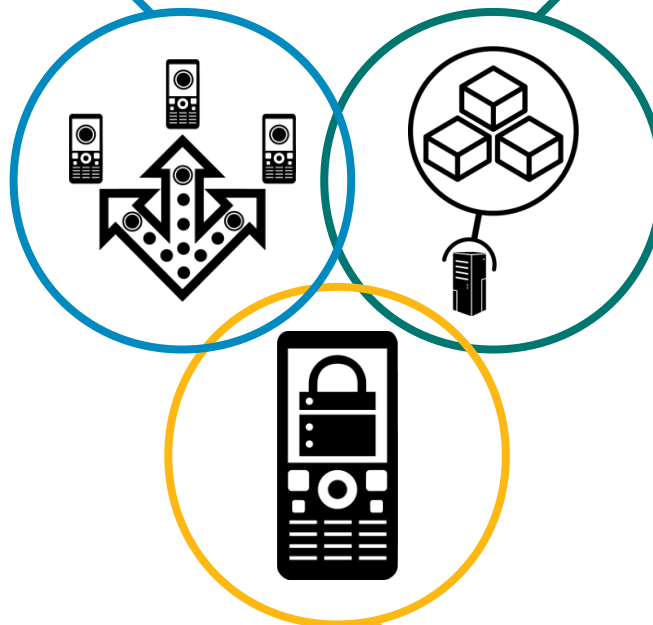


IBM can help you become a mobile enterprise

Extend & Transform

Key Capabilities

- Strategy, planning and implementation
- Mobile-enabled solutions including analytics, commerce, and social business
- Mobile as a service



Build & Connect

Key Capabilities

- Mobile web, hybrid and native app development
- Enterprise data, service, and application integration
- Enterprise wireless networking

Manage & Secure

Key Capabilities

- Mobile lifecycle management
- Device analytics and control
- Secure network communications & management



IBM®

Legal Disclaimer

- © IBM Corporation 2011. All Rights Reserved.
- The information contained in this publication is provided for informational purposes only. While efforts were made to verify the completeness and accuracy of the information contained in this publication, it is provided AS IS without warranty of any kind, express or implied. In addition, this information is based on IBM's current product plans and strategy, which are subject to change by IBM without notice. IBM shall not be responsible for any damages arising out of the use of, or otherwise related to, this publication or any other materials. Nothing contained in this publication is intended to, nor shall have the effect of, creating any warranties or representations from IBM or its suppliers or licensors, or altering the terms and conditions of the applicable license agreement governing the use of IBM software.
- References in this presentation to IBM products, programs, or services do not imply that they will be available in all countries in which IBM operates. Product release dates and/or capabilities referenced in this presentation may change at any time at IBM's sole discretion based on market opportunities or other factors, and are not intended to be a commitment to future product or feature availability in any way. Nothing contained in these materials is intended to, nor shall have the effect of, stating or implying that any activities undertaken by you will result in any specific sales, revenue growth or other results.
- If the text contains performance statistics or references to benchmarks, insert the following language; otherwise delete:
Performance is based on measurements and projections using standard IBM benchmarks in a controlled environment. The actual throughput or performance that any user will experience will vary depending upon many factors, including considerations such as the amount of multiprogramming in the user's job stream, the I/O configuration, the storage configuration, and the workload processed. Therefore, no assurance can be given that an individual user will achieve results similar to those stated here.
- If the text includes any customer examples, please confirm we have prior written approval from such customer and insert the following language; otherwise delete:
All customer examples described are presented as illustrations of how those customers have used IBM products and the results they may have achieved. Actual environmental costs and performance characteristics may vary by customer.
- Please review text for proper trademark attribution of IBM products. At first use, each product name must be the full name and include appropriate trademark symbols (e.g., IBM Lotus® Sametime® Unyte™). Subsequent references can drop "IBM" but should include the proper branding (e.g., Lotus Sametime Gateway, or WebSphere Application Server). Please refer to <http://www.ibm.com/legal/copytrade.shtml> for guidance on which trademarks require the ® or ™ symbol. Do not use abbreviations for IBM product names in your presentation. All product names must be used as adjectives rather than nouns. Please list all of the trademarks that you use in your presentation as follows; delete any not included in your presentation. IBM, the IBM logo, Lotus, Lotus Notes, Notes, Domino, Quickr, Sametime, WebSphere, UC2, PartnerWorld and Lotusphere are trademarks of International Business Machines Corporation in the United States, other countries, or both. Unyte is a trademark of WebDialogs, Inc., in the United States, other countries, or both.
- If you reference Adobe® in the text, please mark the first use and include the following; otherwise delete:
Adobe, the Adobe logo, PostScript, and the PostScript logo are either registered trademarks or trademarks of Adobe Systems Incorporated in the United States, and/or other countries.
- If you reference Java™ in the text, please mark the first use and include the following; otherwise delete:
Java and all Java-based trademarks are trademarks of Sun Microsystems, Inc. in the United States, other countries, or both.
- If you reference Microsoft® and/or Windows® in the text, please mark the first use and include the following, as applicable; otherwise delete:
Microsoft and Windows are trademarks of Microsoft Corporation in the United States, other countries, or both.
- If you reference Intel® and/or any of the following Intel products in the text, please mark the first use and include those that you use as follows; otherwise delete:
Intel, Intel Centrino, Celeron, Intel Xeon, Intel SpeedStep, Itanium, and Pentium are trademarks or registered trademarks of Intel Corporation or its subsidiaries in the United States and other countries.
- If you reference UNIX® in the text, please mark the first use and include the following; otherwise delete:
UNIX is a registered trademark of The Open Group in the United States and other countries.
- If you reference Linux® in your presentation, please mark the first use and include the following; otherwise delete:
Linux is a registered trademark of Linus Torvalds in the United States, other countries, or both. Other company, product, or service names may be trademarks or service marks of others.
- If the text/graphics include screenshots, no actual IBM employee names may be used (even your own), if your screenshots include fictitious company names (e.g., Renovations, Zeta Bank, Acme) please update and insert the following; otherwise delete: All references to [insert fictitious company name] refer to a fictitious company and are used for illustration purposes only.

