

An abstract graphic on the left side of the slide, composed of overlapping, semi-transparent geometric shapes in shades of blue, green, and yellow, creating a dynamic, layered effect.

HP Quality Center: Migrating to Jazz CLM

Louise Elliott

Migration Architect

IBM Software Services for Rational

Innovate2013

The IBM Technical Summit

Ready to migrate?



*HP
Quality
Center*

*IBM Rational solution
for
Collaborative
Lifecycle
Management*

Session overview

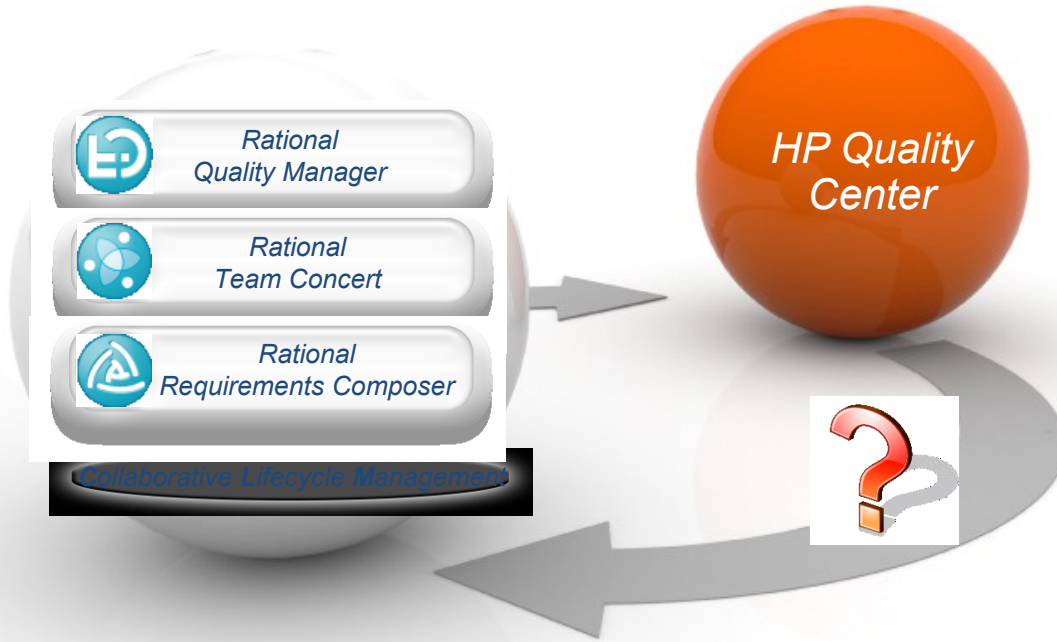
QC to Rational migration

- What to migrate?
- Mapping QC project data
- Migration process
- Migration approach
- What makes a migration challenging?
- How long will a migration take?

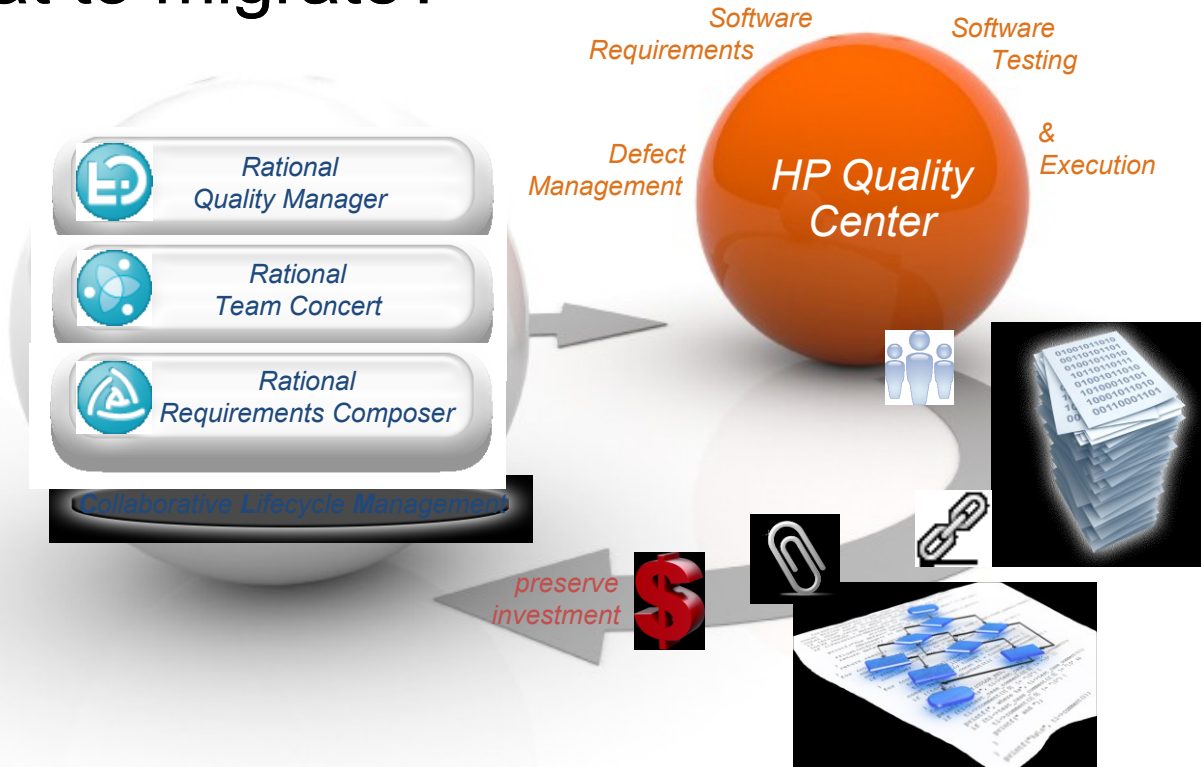
Developing a migration tool

- Client examples
 - Complex
 - Proof of Concept
 - Simple
- Demo

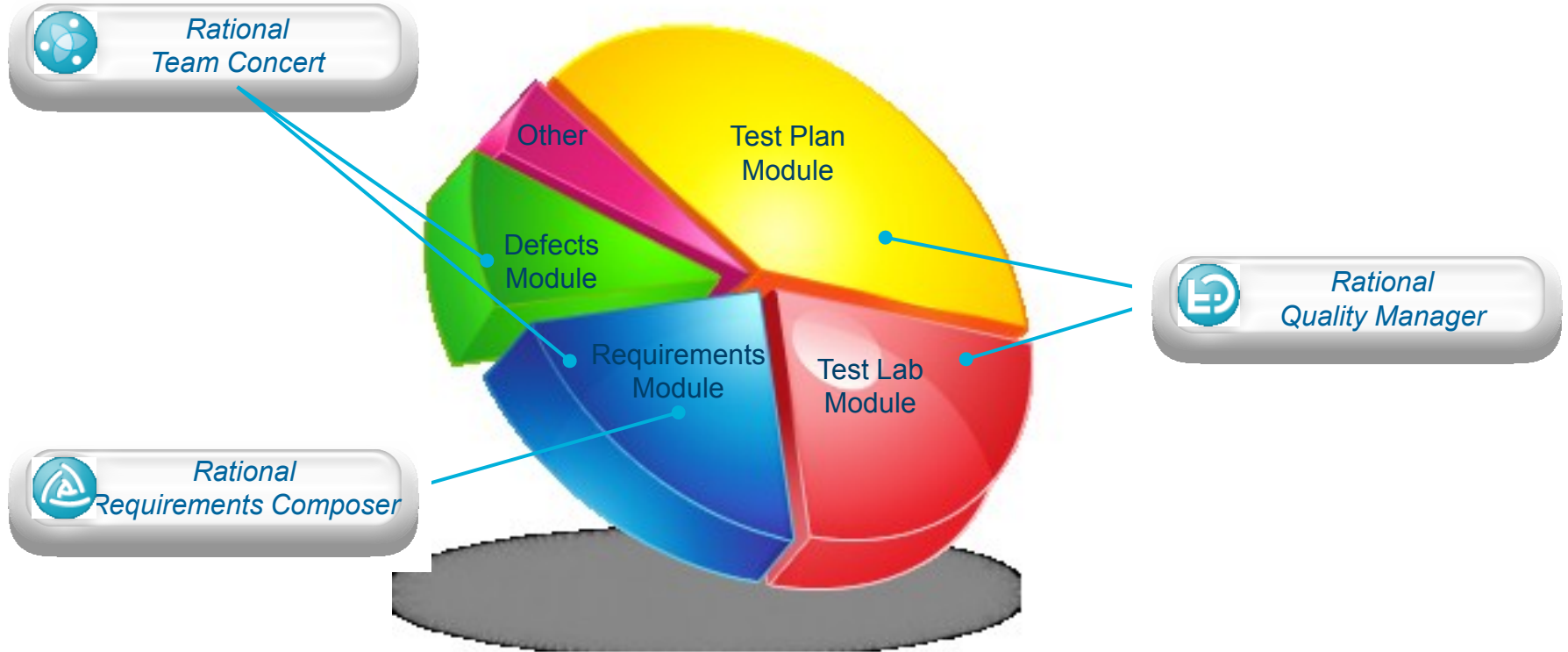
What to migrate?



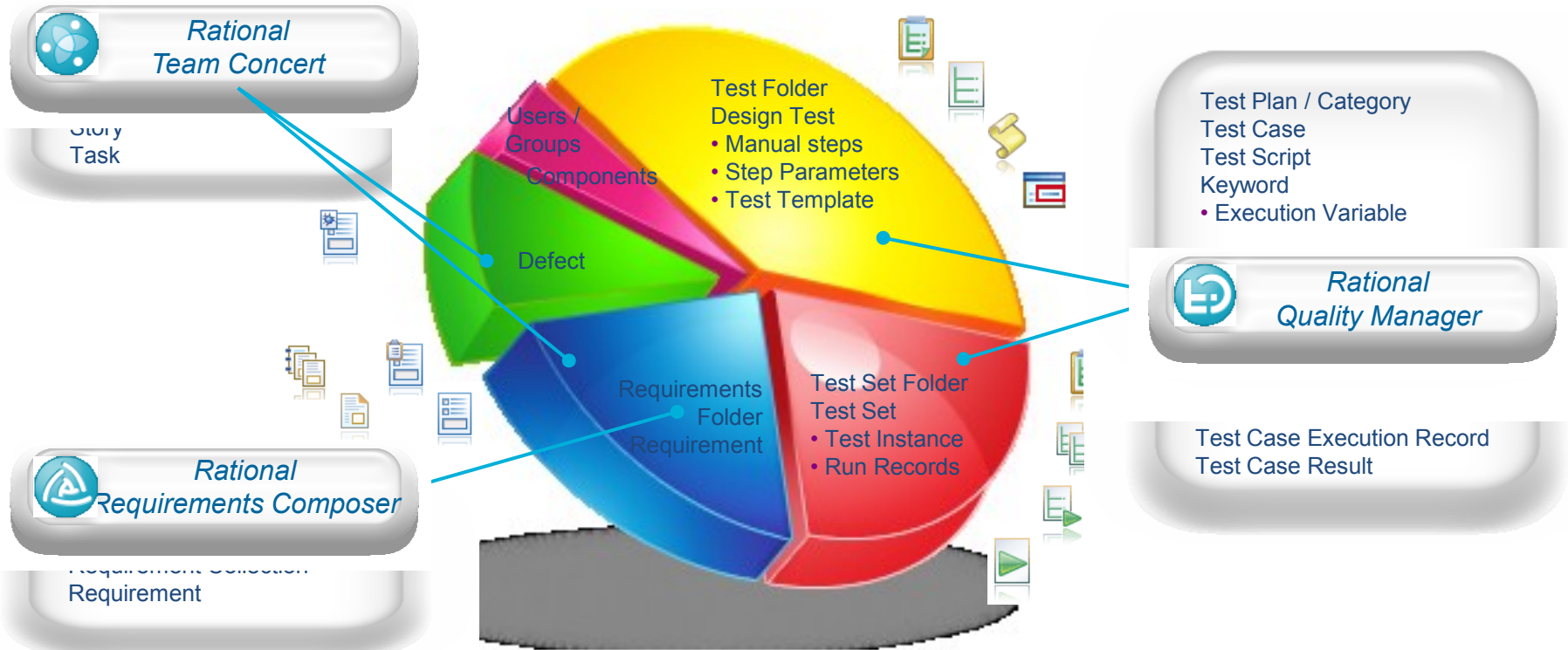
What to migrate?



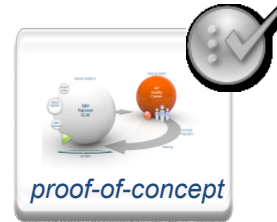
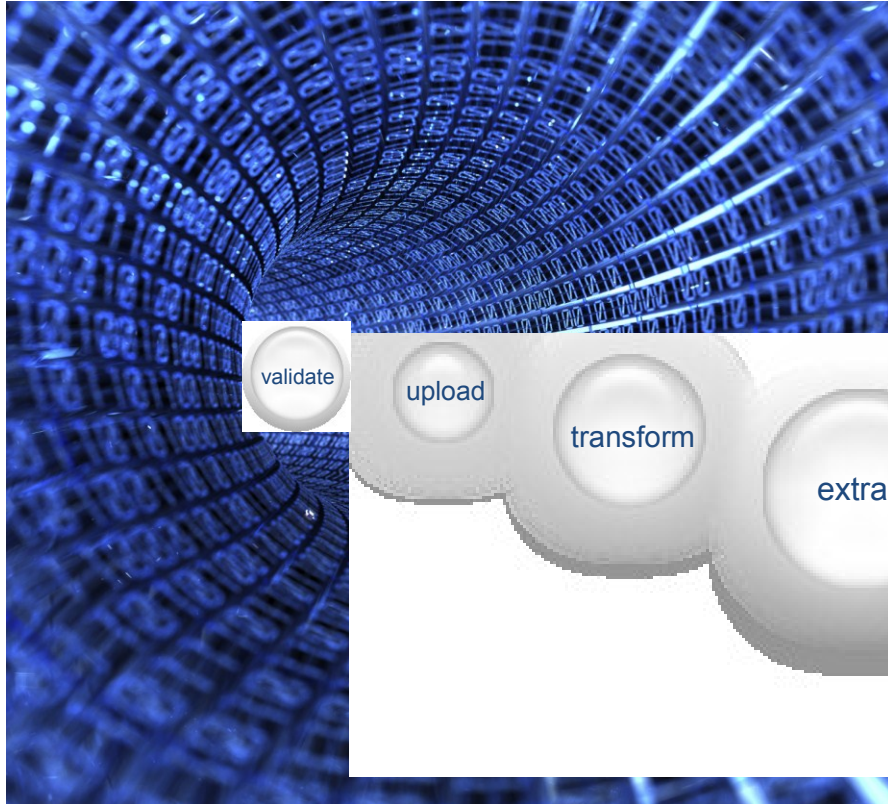
Mapping QC project data



Mapping QC project data



Migration process



validate

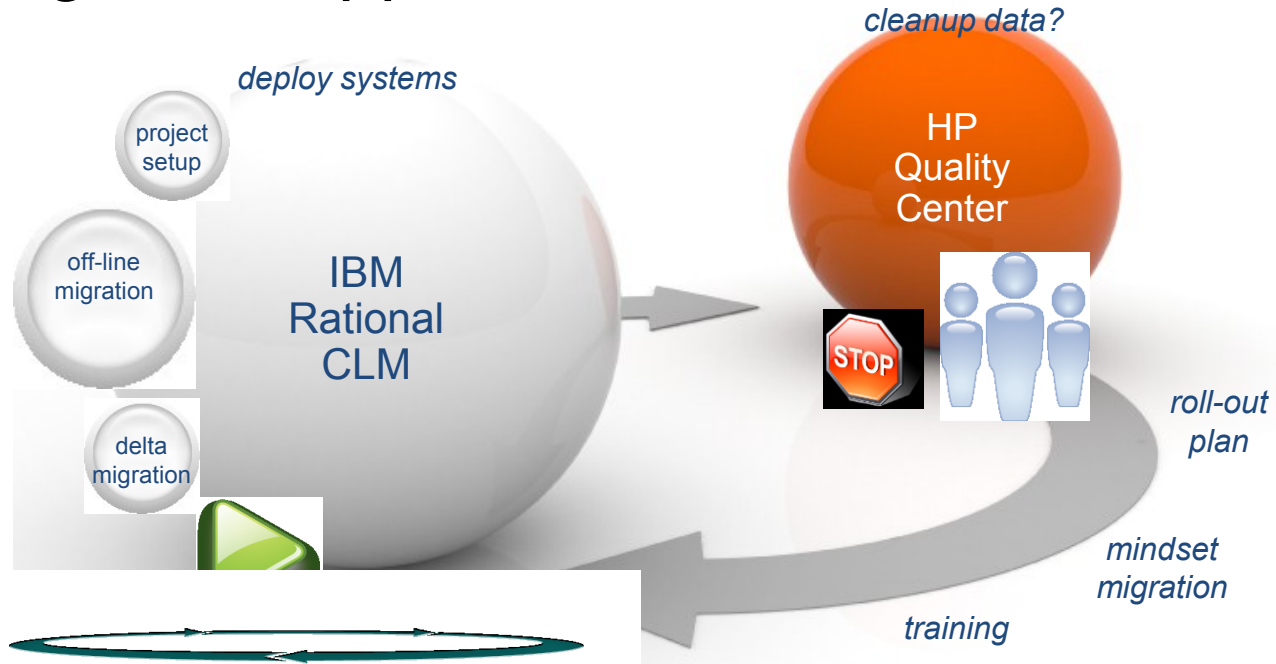
upload

transform

extract

analyse

Migration approach



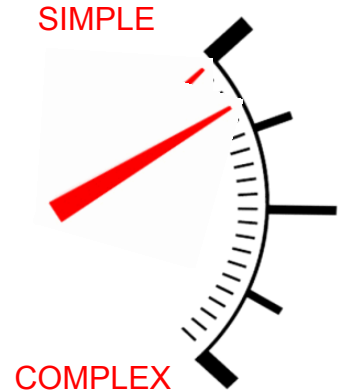
What makes a migration challenging?



single
QC asset
migration



out-of-the-box
templates



What makes a migration challenging?



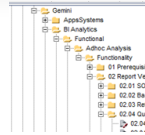
What makes a migration challenging?



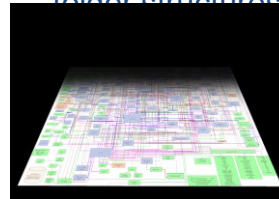
single
QC asset
migration



attachments
& history



Navigating inconsistent
folder structures



custom
templates

out-of-the-box
templates



linked
assets



within / across
applications

SIMPLE

COMPLEX



Other considerations...



formatting issues



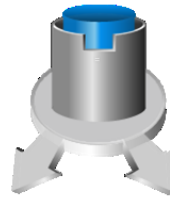
language support



*relationships & upload order
to preserve links across CLM*



user mappings

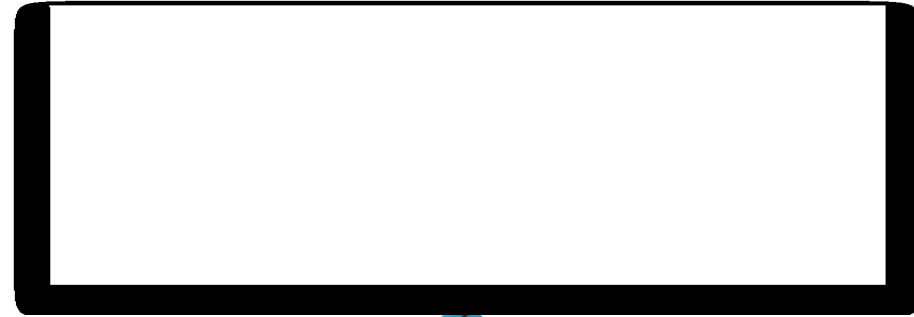
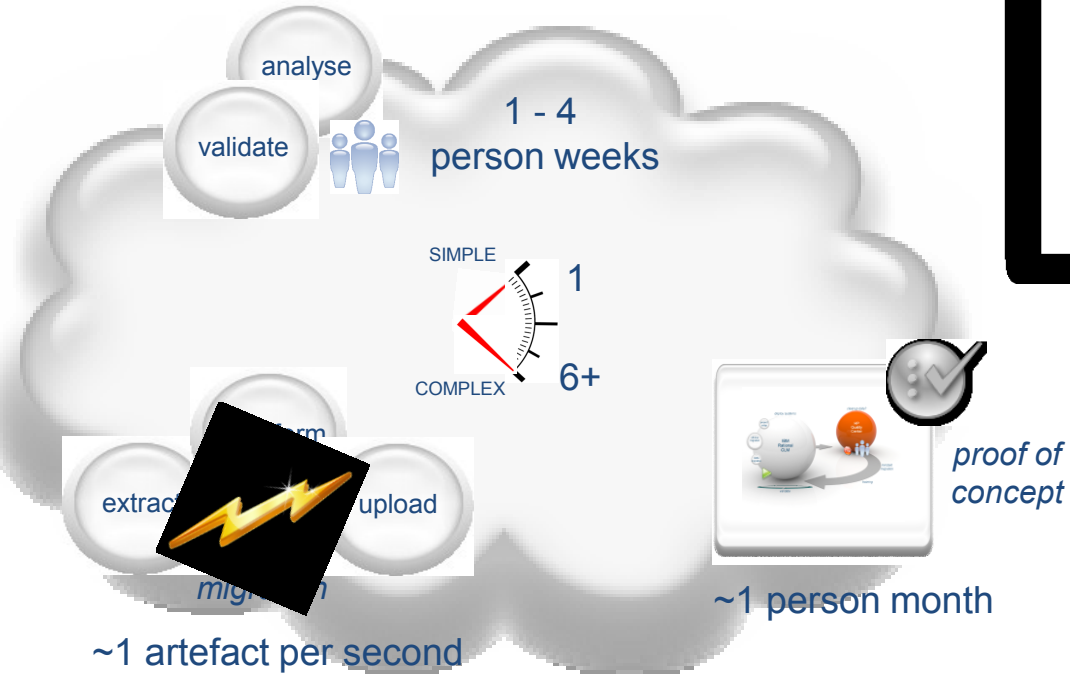


*source / target system
version differences*



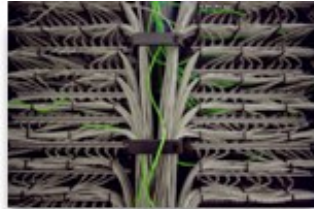
How long will a migration take?

It depends...



configurable

Developing a migration tool



using different client experiences

Complex migration scenario

Rational v3.0.1 → QC v9.2

360k 350k 3k 700k

1,200 Users
(3,000+ in data)

custom QC templates, state behavior, workflow

6 projects
inconsistent QC Test folder organization

2 person months

3 person months



July 2011

2 person months



66 unique project areas



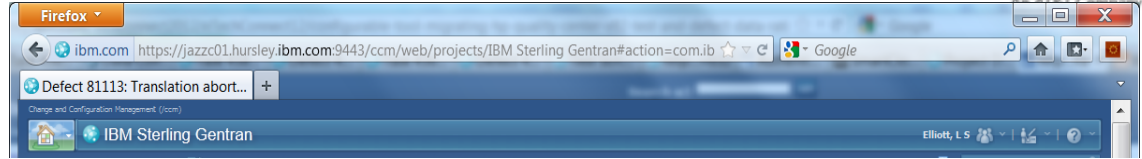
"The PTC integrated with my team to successfully deliver this high risk project."
Patti Hicks, Engineering Services manager, Sterling

April 2012

Defects

- Custom defect template
- 10 tabs
- 90 Attributes (22 required)
- 40 state pre-condition checks
- Process template inheritance
- Custom plug-in

*Enabled familiar data transition
and workflow*



Test Cases

QC Test Details

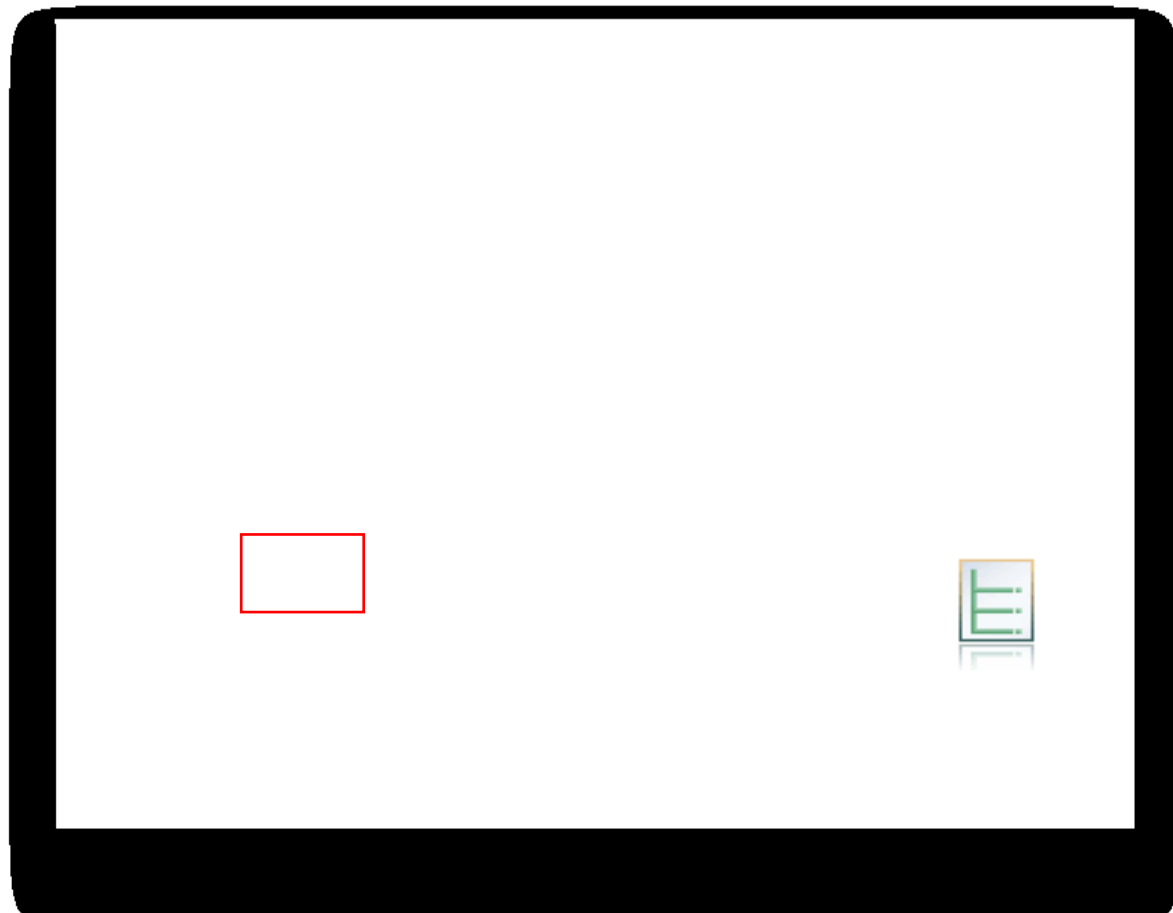
- Test Case

QC Test Folders

- Test Case Categories
- Test Plan

QC Test Design Steps

- Link to Manual Test Script



Test Scripts, Keywords

QC Test Templates

- Keywords

QC Test Design Steps

- Manual Test Script

QC Test Parameters

- Execution Variables

Associated QTP Scripts

- Test Script (QTP Type)

The screenshot displays the IBM Rational Quality Manager (RQM) web console interface. The browser address bar shows the URL: `https://jazzc01.hursley.ibm.com:9443/qm/web/console/B2Bi_Stds#action=com.ibm.rqm.planning.home.actionDispatcher&subAction=viewTest`. The page title is "Test Script: 140217: 02 Inbound X12 6020 Transaction".

The main content area shows the "Test Script Overview" for the script "140217: 02 Inbound X12 6020 Transaction". The script is in a "Draft" state. Key details include:

- Originator:** Caraccio, Laurence
- Owner:** Unassigned Ster
- Type:** Manual
- Test Data:** Unassigned

The description states: "Purpose: Validate that an inbound X12 Transaction for v6020 message is successful".

Dependencies listed include:

- (*) Map Editor should be installed
- (*) EDI Standards should be downloaded
- (*) Output file of testcase 01 Outbound X12 6020 Transaction should be used as input for this document.
- (*) Map 834 - Benefit Enrollment and Maintenance should exist in the system
- (*) Edit the transaction level envelope and set the map with 834 - Benefit Enrollment and Maintenance

General Notes: "This test can be executed on the products - SI 5.1"

Automation Notes: (Empty)

Summary: (Empty)

Formal Review: (Empty)

Manual Steps:

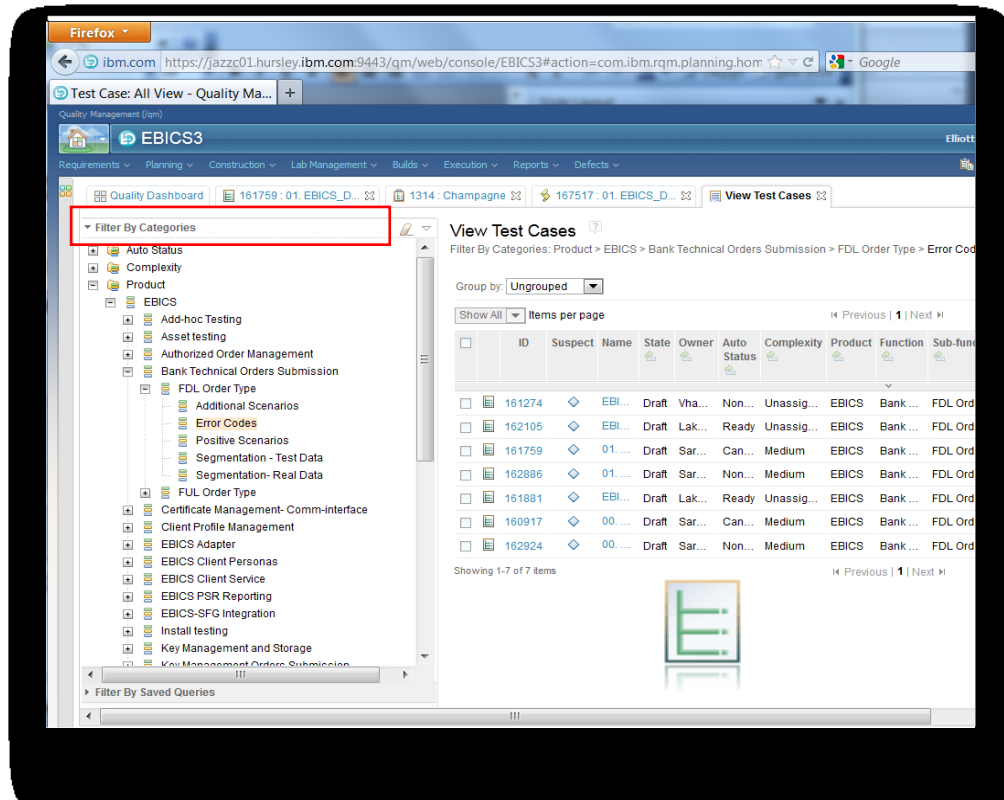
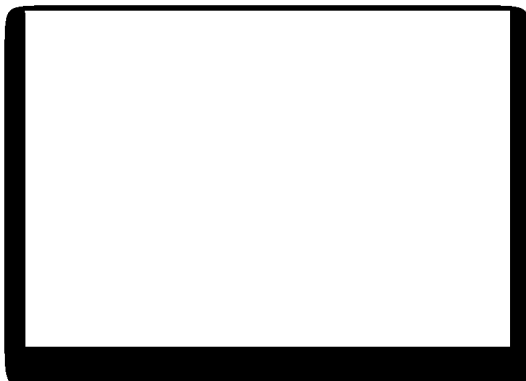
Step	Description	Expected Results
1	Log in to GIS application.	GIS home page should be displayed.
2	06_REG_Import_Resources <ul style="list-style-type: none"> Log into GIS instance. Select [Deployment] --> [Resource Manager] --> [Import/Export] Select [Go] button in the Import Resources section Provide the attached File Name and the Passphrase (password) in the Import File screen and select [Next] button Select [Next] button in the Create Resource Tag screen 	GIS home page should be displayed. The Import/Export screen should display. The Import Resources screen should display. The Create Resource Tag screen should display. The Update Objects screen should...

A red box highlights the manual steps table. A small inset window titled "d View" is visible on the right side of the screen, showing a "Filter Text" field and "Steps" section.

Categories

QC Test Folder hierarchy

- Filter by Categories:
 - Test Case
 - Test Plan



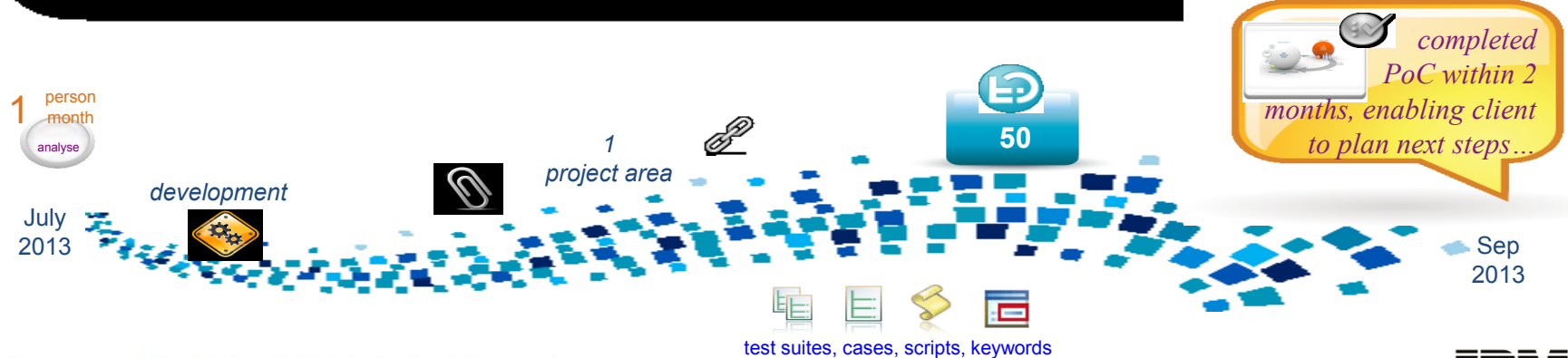
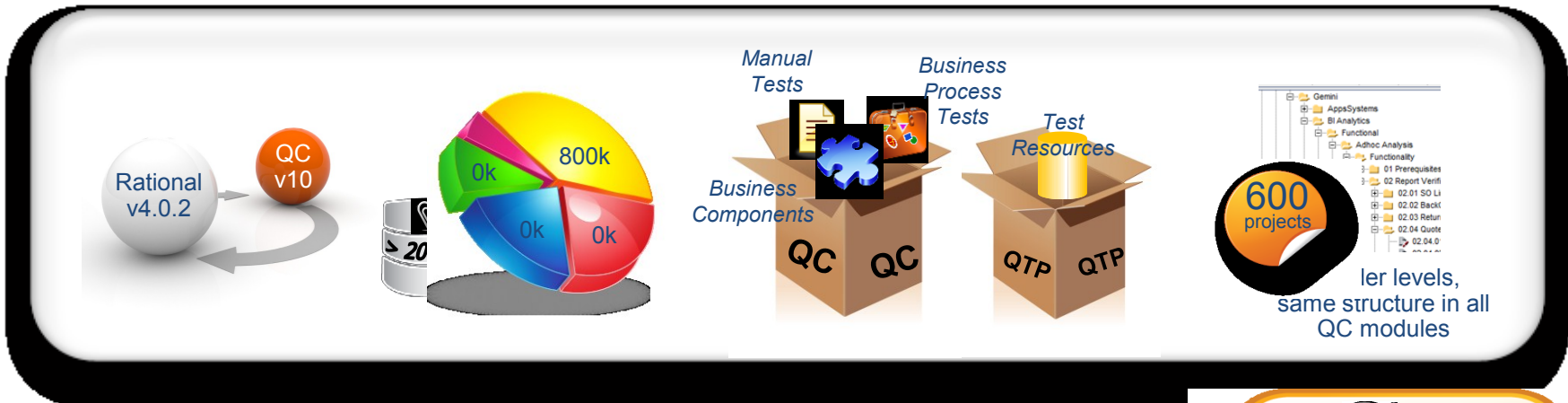
Proof of concept scenario



Rational v4.0 ↔ QC v9.2
 2,000 Users
 restricted access
 custom requirement types
 out-of-the-box templates
 600 projects
 multiple levels, same structure in all QC modules
 language support
 > 20

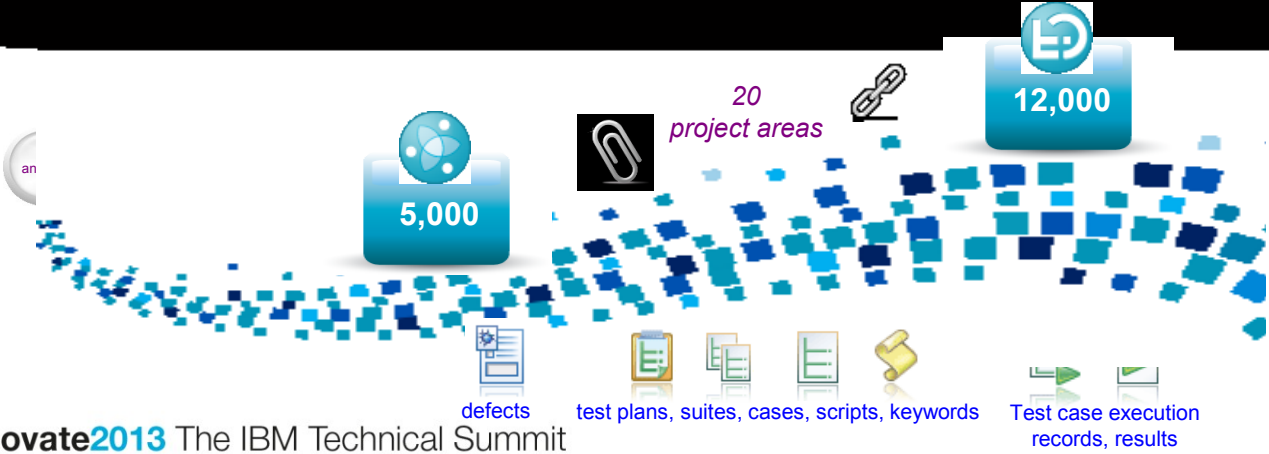
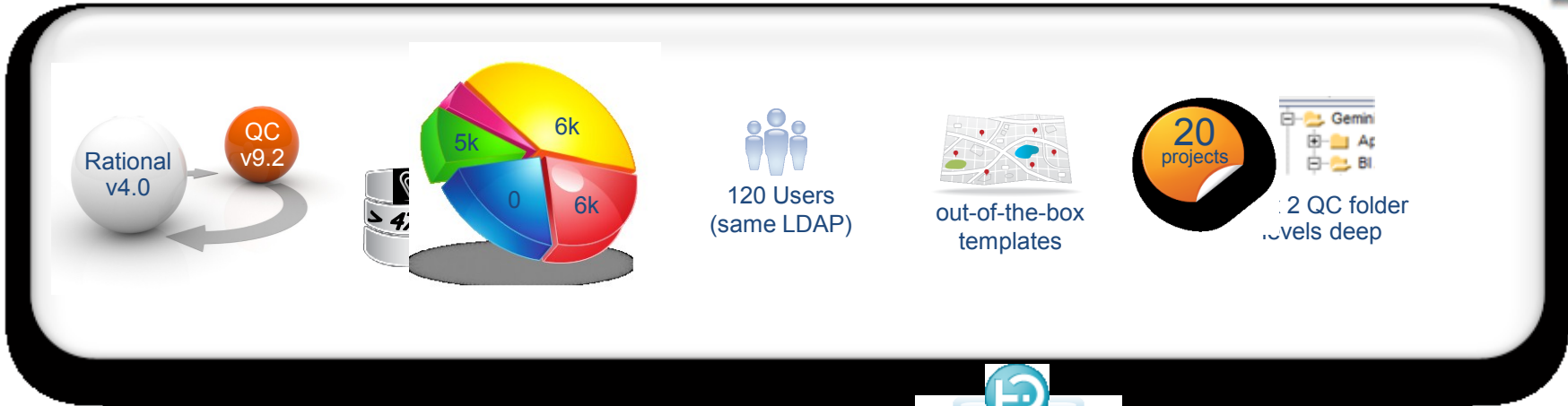
1 person month analyse
 May 2012
 development
 200
 2 unique project areas
 3,000
 completed PoC within 2 months, enabling client to plan next steps...
 July 2012
 defects
 test plans, suites, cases, scripts, keywords
 Test case execution records, results

Proof of concept scenario





Simple migration scenario



estimate complete integrated migration < 1 month

Demo

All migrations are possible...



Every migration is unique

Expect the

UNEXPECTED!

Questions



Thank You

2013



An abstract graphic on the left side of the page, composed of overlapping, semi-transparent geometric shapes in shades of blue, green, and light blue, creating a sense of depth and movement.

Innovate2013

The IBM Technical Summit