

IBM Software

# Information On Demand **2010** Comes To You

Unlock the True Value of Your Information

IBM Software

**Information** OnDemand **2010**  
Comes To You

## **Information Agenda for Government**

Amish Patel

Information Management in Government

Leader - Europe

IBM Software Group

**Unlock the True Value of Your Information**

## *Information for Disruptive Innovation*

---

### *Accelerating Business Optimization*

---

### *Creating your Information Agenda*

## UK's challenges brought on by key drivers.



### ACCELERATING GLOBALIZATION

Countries and societies are becoming more economically interdependent across social, political and cultural boundaries, as illustrated by current economic conditions.



### CHANGING DEMOGRAPHICS

Median ages are rising in the developed countries of Italy, Germany and Japan, but dropping in developing ones such as India.



### EVOLVING SOCIETAL RELATIONSHIPS

Today, governments are expected to deliver results and value through secure, private services that are available anywhere at any time.



### RISING ENVIRONMENTAL CONCERNS

Societies and governments are becoming more attuned to what the earth can provide and what it can tolerate.



### EXPANDING IMPACT OF TECHNOLOGY

The adoption of the Internet is remaking the landscapes of business, healthcare and government.

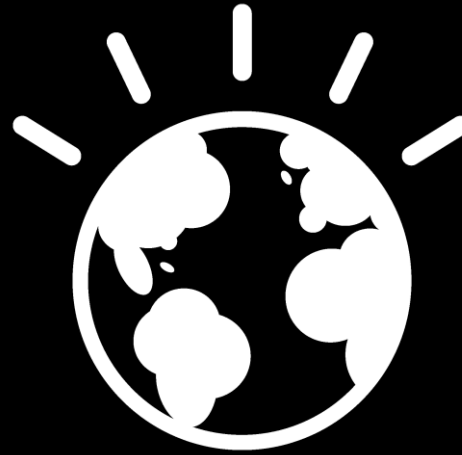


### GROWING THREATS TO SOCIAL STABILITY AND ORDER

From terrorism to armed conflict to pandemics to natural disasters, the character of threats is changing.

**Today's imperative: Managing within the current global financial and economic crisis in a way that begins to solve the above challenges and lay a foundation to build a better future.**

This mandate for change is a mandate for smart.





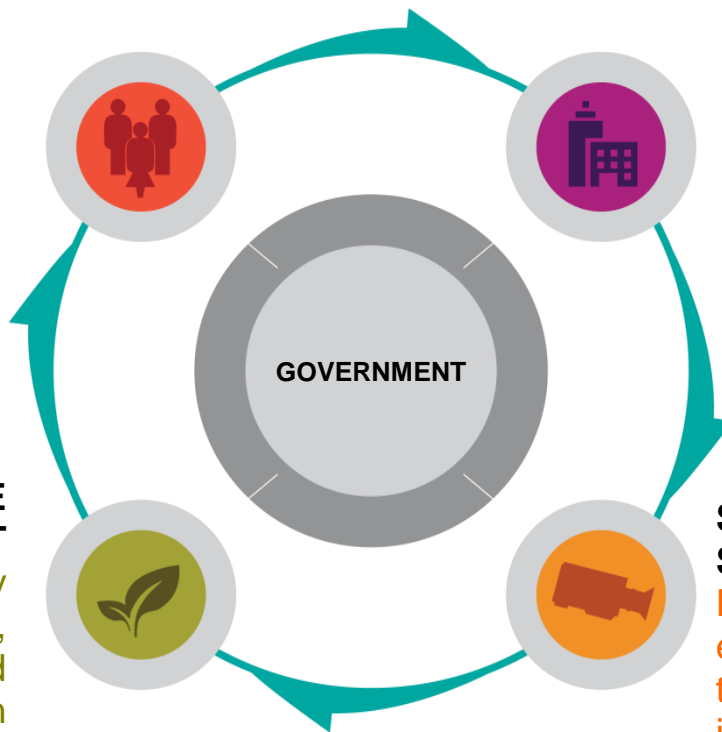
To ensure the economic health, welfare and security of their citizens, smart governments will work to...

### **IMPROVE CITIZEN AND BUSINESS SERVICES**

Connecting people to programs based on individual needs—achieving sustainable outcomes while reducing operational costs and maximizing taxpayer value.

### **MANAGE RESOURCES EFFECTIVELY**

Leveraging business intelligence and planning to improve insight and elevate performance with visibility and control.



### **STRENGTHEN NATIONAL SECURITY AND PUBLIC SAFETY**

Enabling defense and law enforcement organizations to achieve situational awareness, increased speed of command and combat superiority.

### **ENSURE A SUSTAINABLE ENVIRONMENT**

Deploying environmentally responsible operations, from energy efficiency and conservation to transportation management and the pursuit of renewable resources

Healthcare systems throughout the world are being confronted with the same set of change drivers

### Individual Engagement



Patient/Member Centric  
Informed (educated) consumers  
accountable for their own health

### Personalization



New treatments and  
technologies  
Targeted treatments  
and biologics

### Value

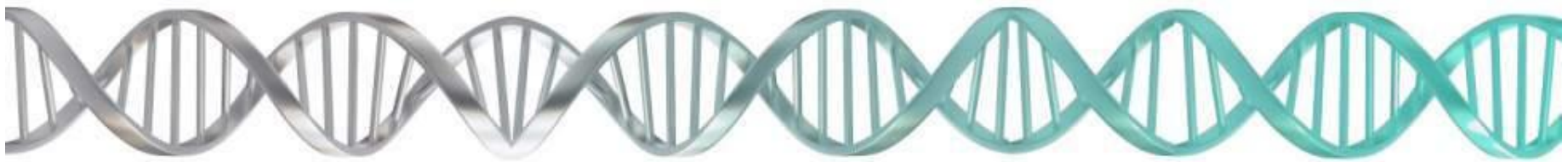


Focus on quality of care  
and outcomes not just costs  
Affordability and pay for  
performance

### Collaboration



New entrants and new roles for  
current players  
Integrated electronic healthcare  
records



### Transformation and Reform

Healthcare system needs to provide levels of care through evidence-based personalized medicine for lifetime health maintenance and disease prevention in addition to episodic and acute care

To meet expectations for improved outcomes, increased value and more accountable, sustainable health systems, healthcare organizations are working to

...

## IMPROVE OPERATIONAL EFFECTIVENESS

Building flexibility into operations to support cost reduction and excellence in clinical and business performance and practices.

## ACHIEVE BETTER QUALITY AND OUTCOMES

Applying insights to improve quality of care, clinical outcomes and services and deliver personalized healthcare value, while improving financial results.



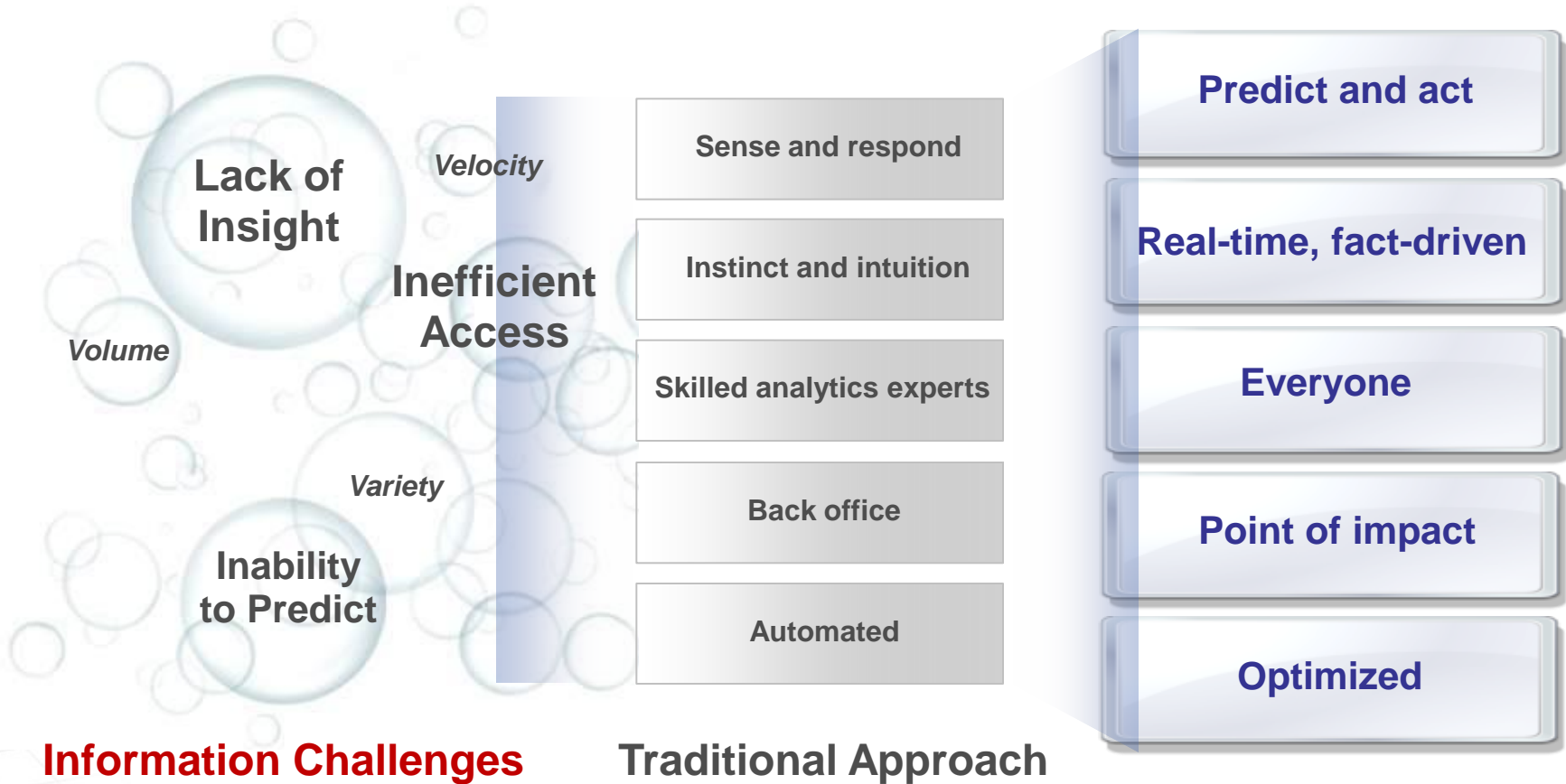
## DELIVER COLLABORATIVE CARE FOR PREVENTION AND WELLNESS

Collaborating across care settings to deliver integrated, personalized care experiences, prevent disease, promote wellness and manage care.



The Key is Leveraging Information and Analytics  
Informed, Real-time Decisions at the Point of Impact...  
An Information-Led Transformation

*Information-Led  
Transformation*



## ***Information for Disruptive Innovation***

---

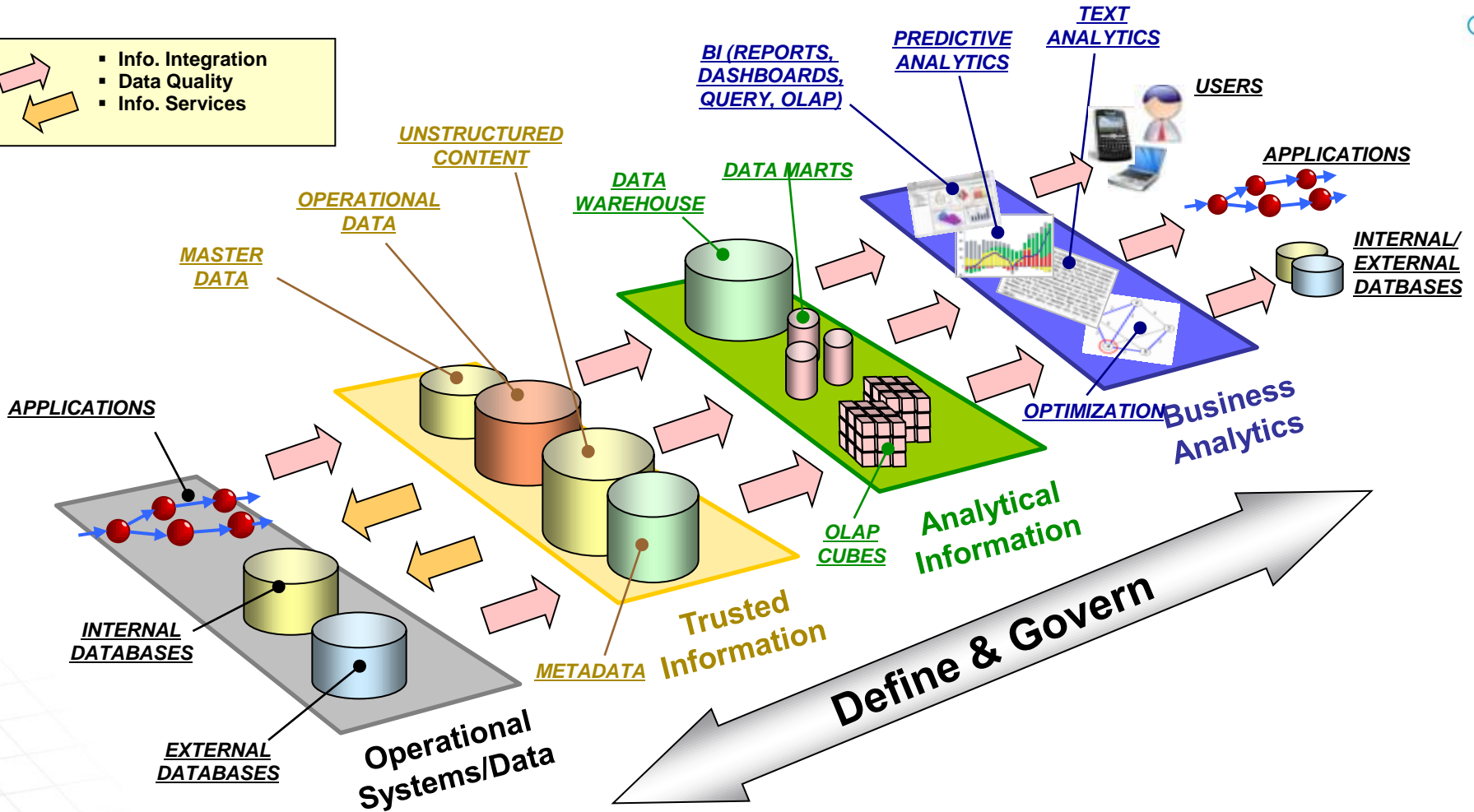
***Accelerating Business Optimization***

---

***Creating your Information Agenda***

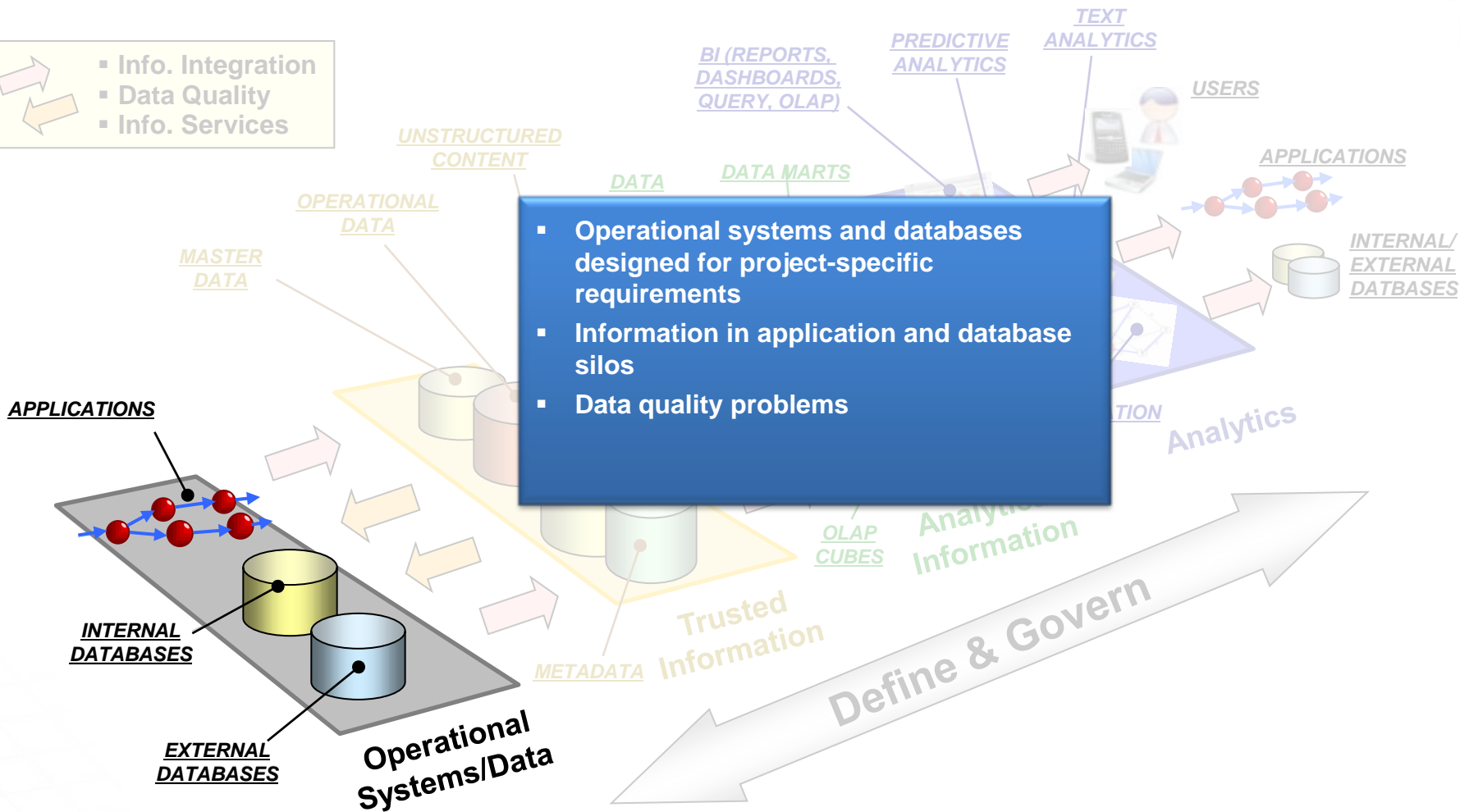
# Information Supply Chain

- Info. Integration
- Data Quality
- Info. Services



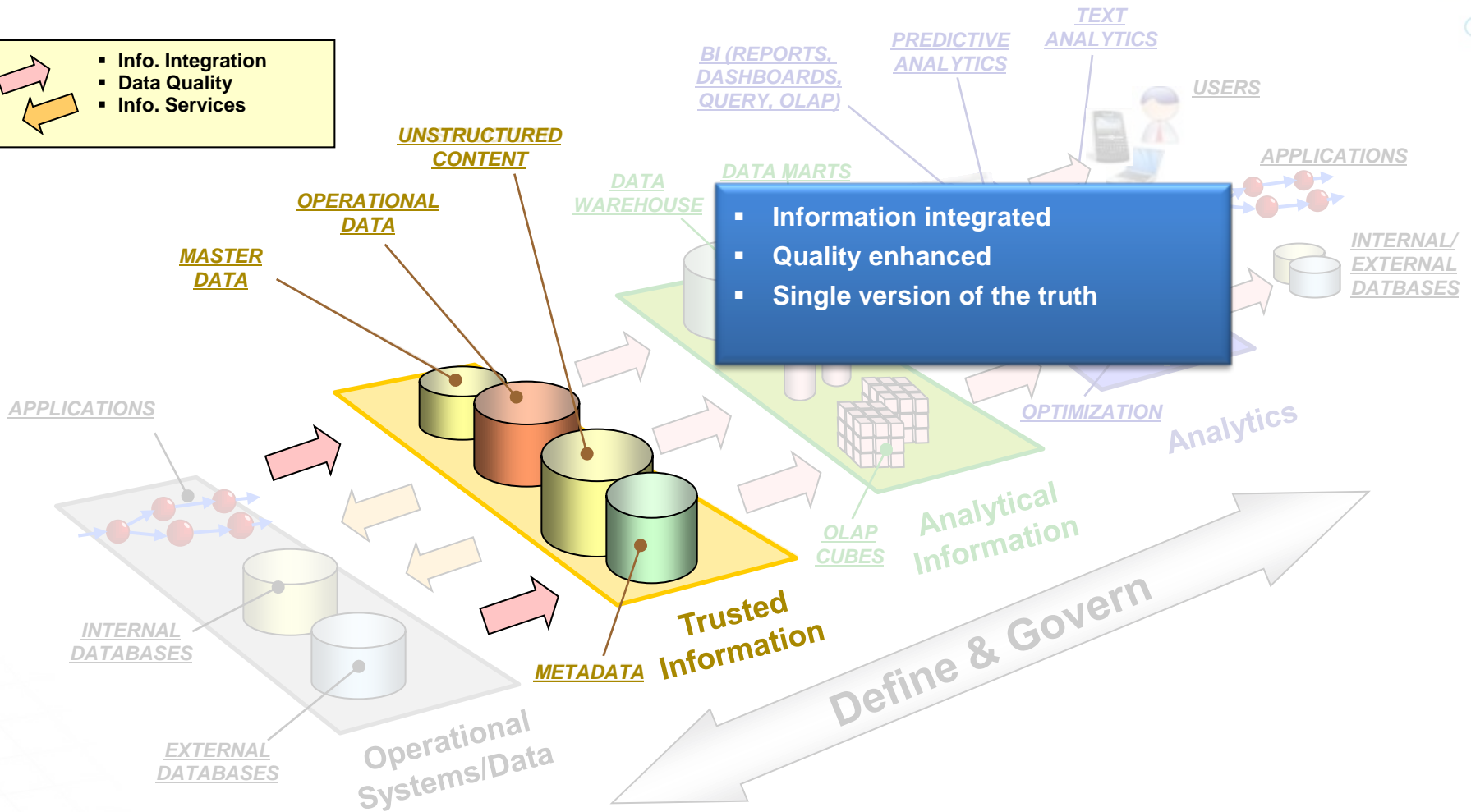
# Information Supply Chain

- Info. Integration
- Data Quality
- Info. Services



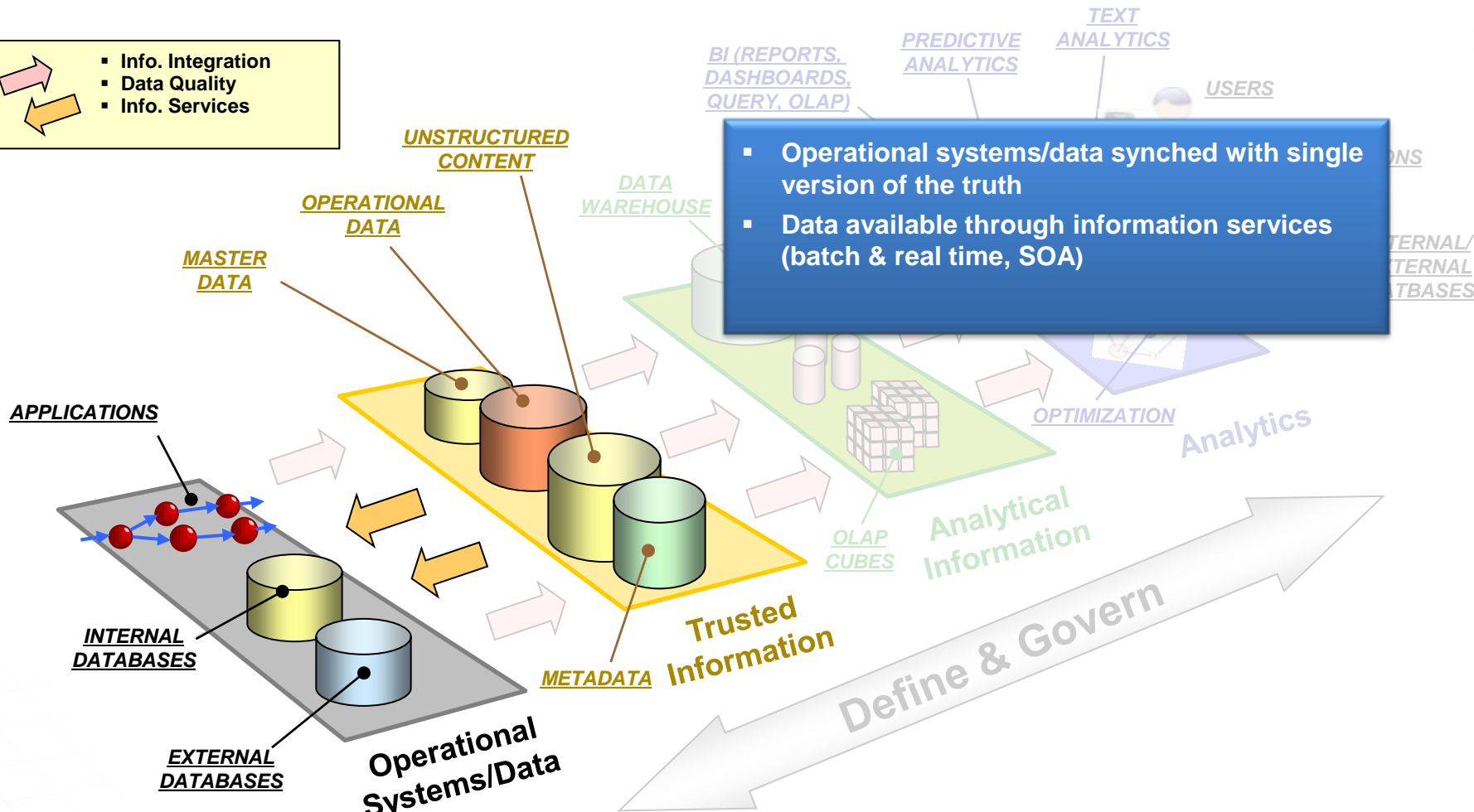
# Information Supply Chain

- Info. Integration
- Data Quality
- Info. Services



# Information Supply Chain

- Info. Integration
- Data Quality
- Info. Services



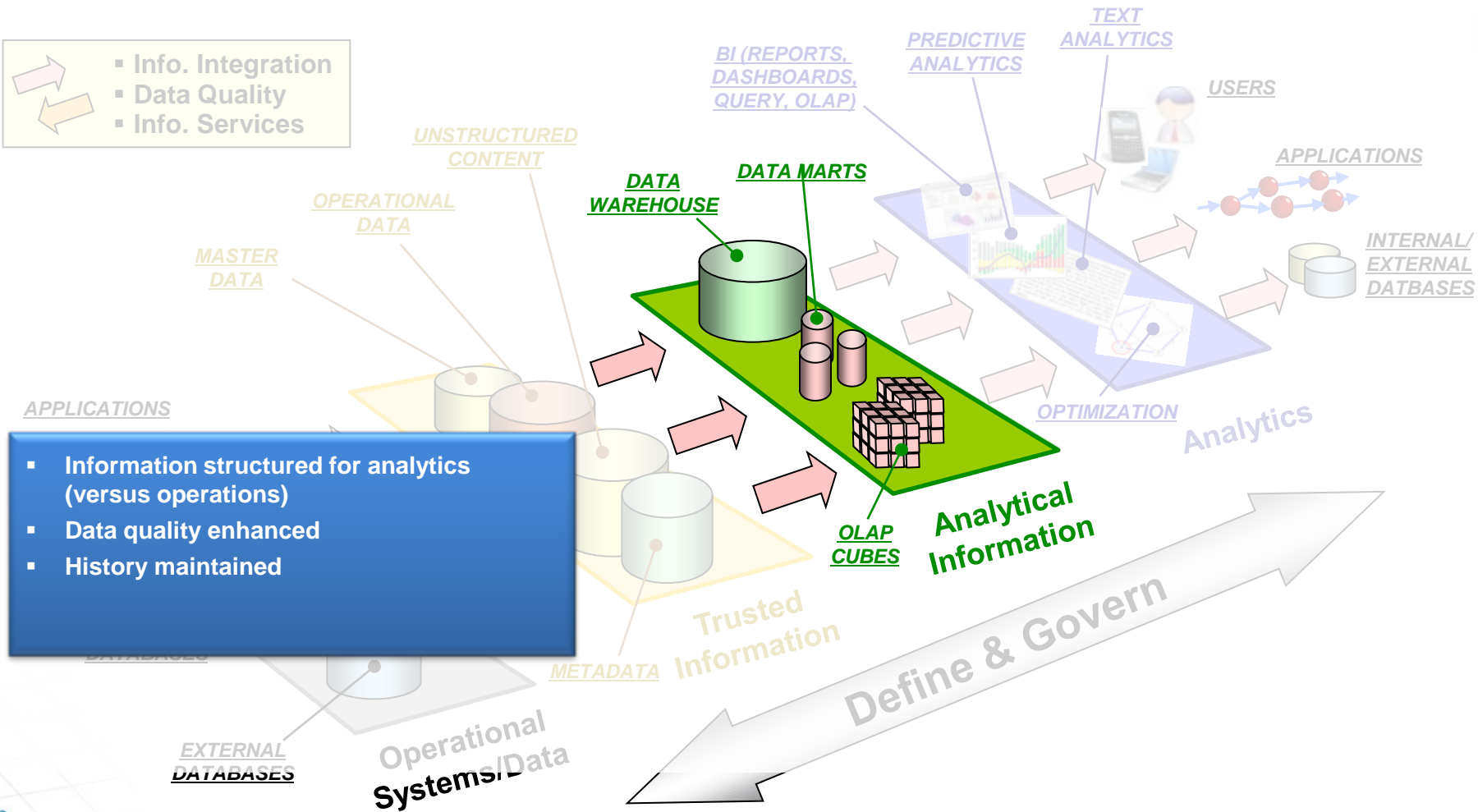
▪ Operational systems/data synched with single version of the truth

▪ Data available through information services (batch & real time, SOA)

Define & Govern

# Information Supply Chain

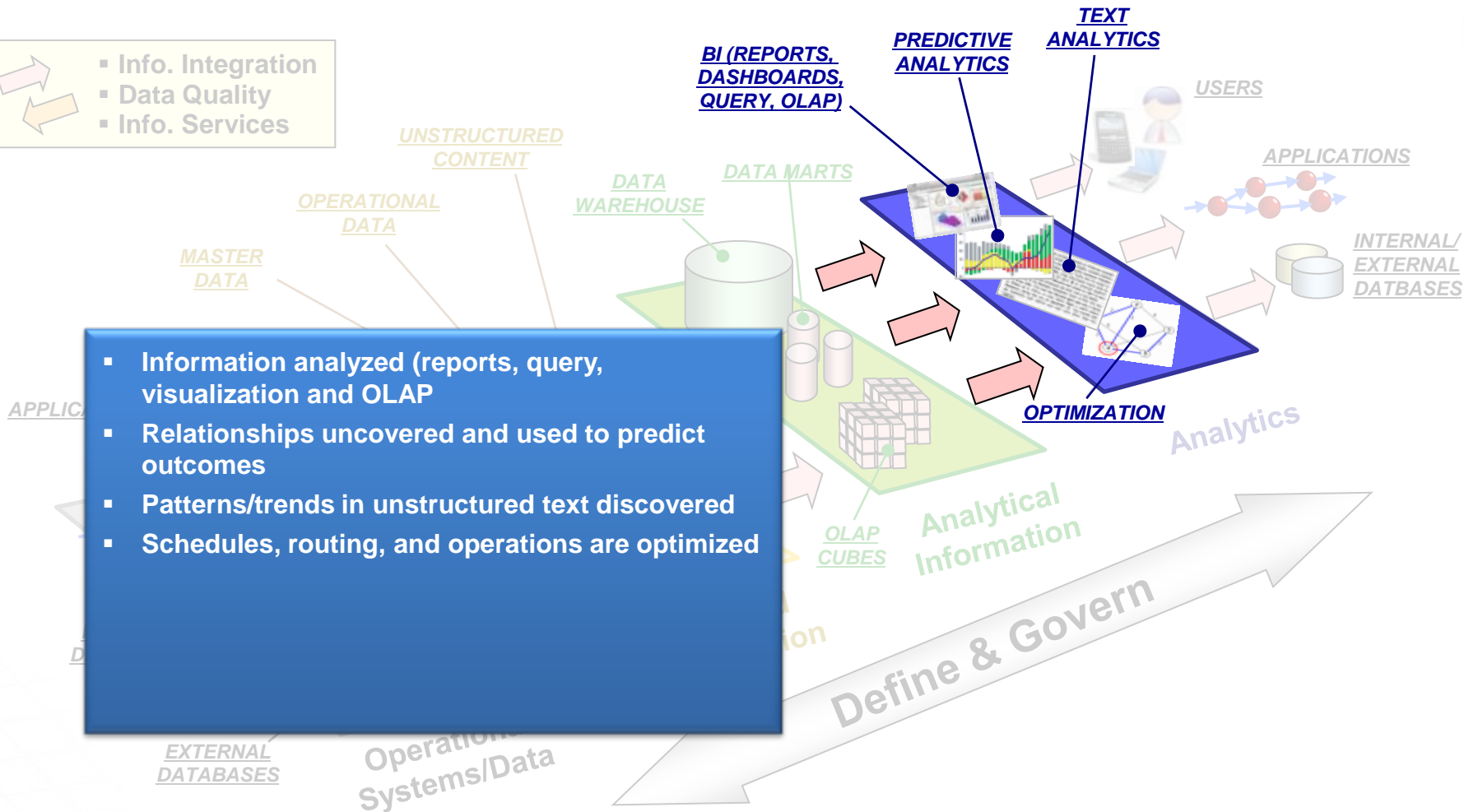
- Info. Integration
- Data Quality
- Info. Services



- Information structured for analytics (versus operations)
- Data quality enhanced
- History maintained

# Information Supply Chain

- Info. Integration
- Data Quality
- Info. Services



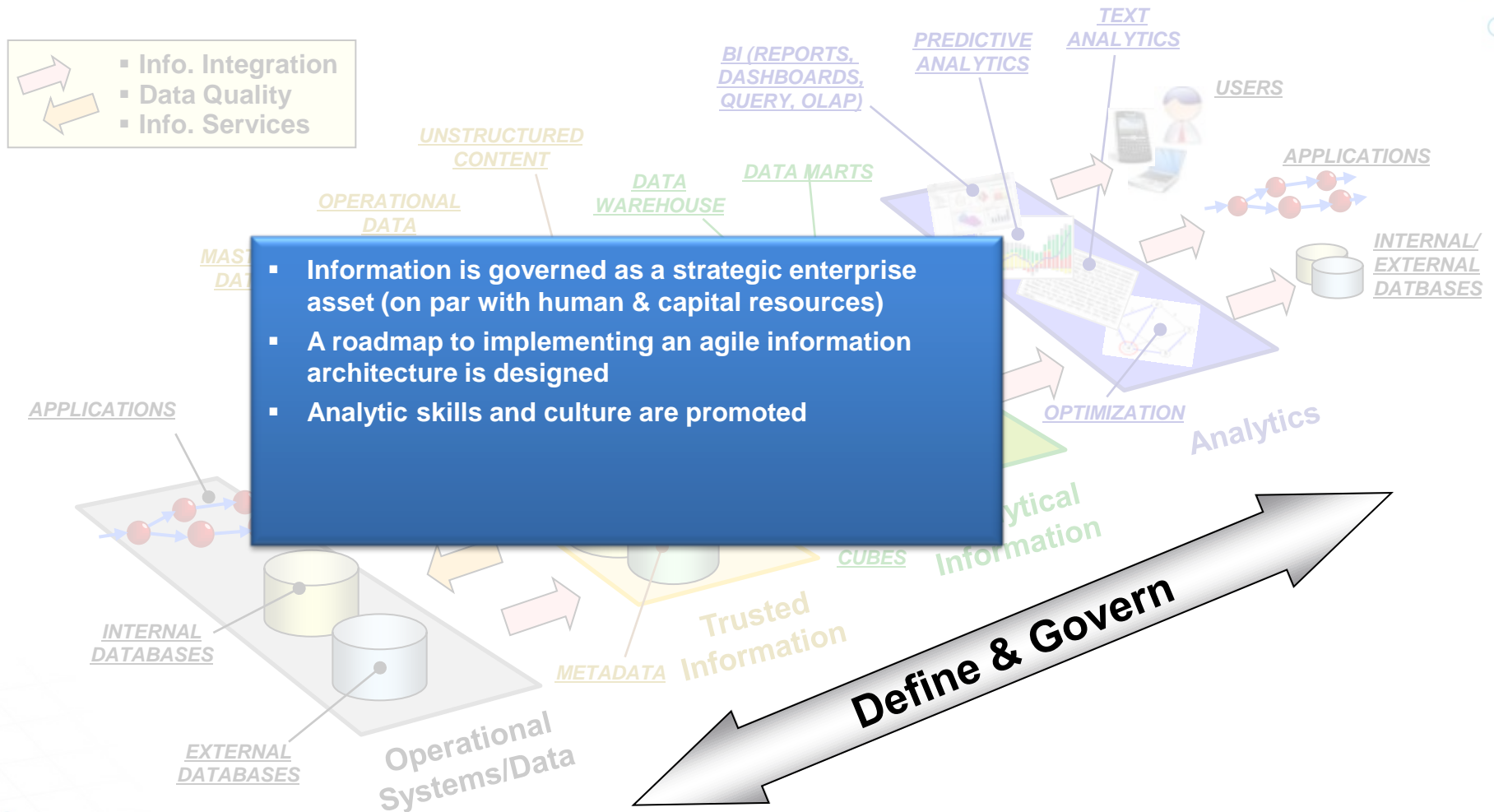
- Information analyzed (reports, query, visualization and OLAP)
- Relationships uncovered and used to predict outcomes
- Patterns/trends in unstructured text discovered
- Schedules, routing, and operations are optimized



## Information Supply Chain

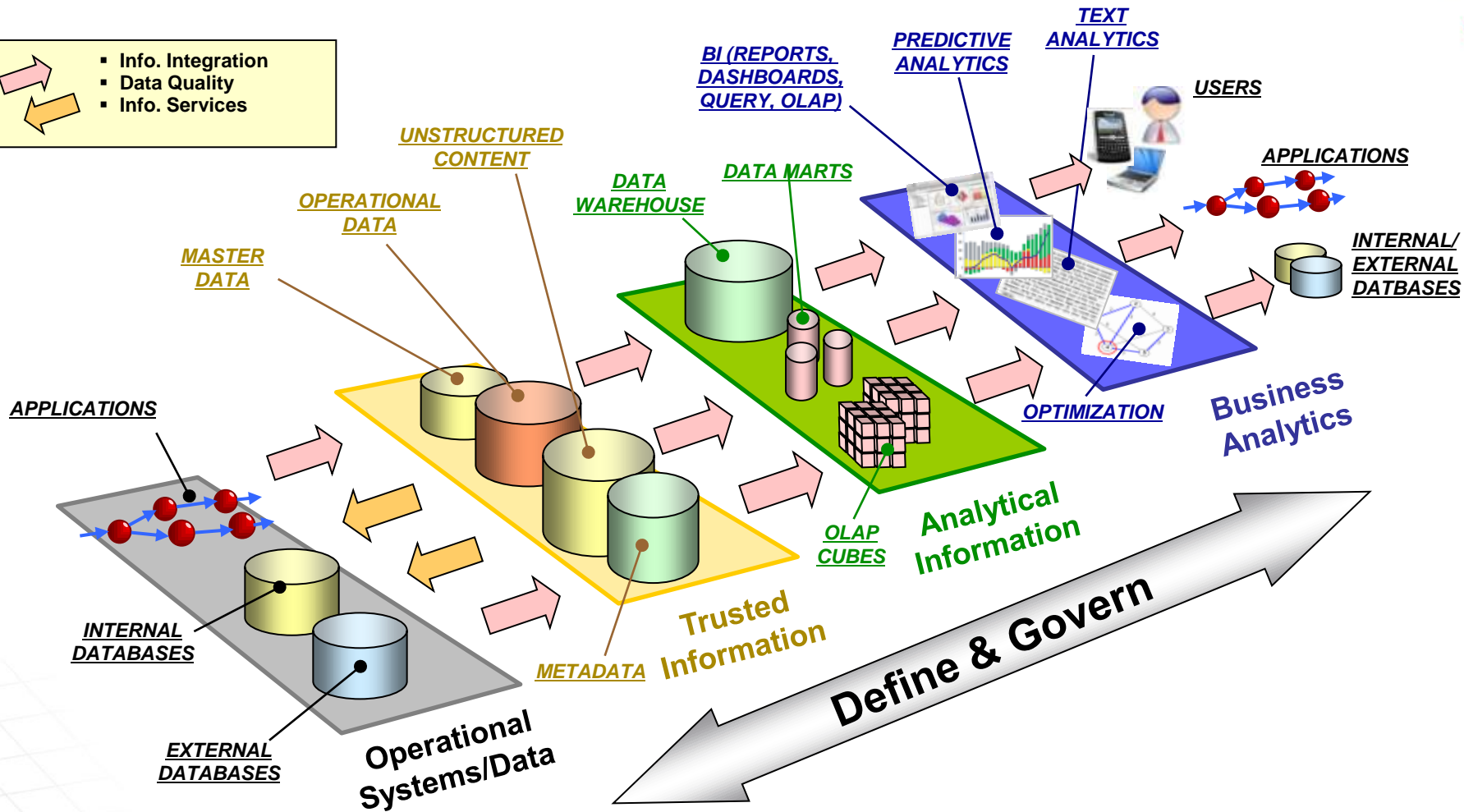


## Information Supply Chain



# Information Supply Chain

- Info. Integration
- Data Quality
- Info. Services



## ***Information for Disruptive Innovation***

---

## ***Accelerating Business Optimization***

---

## ***Creating your Information Agenda***

## Creating an Information Driven Government

### Strategic Imperatives

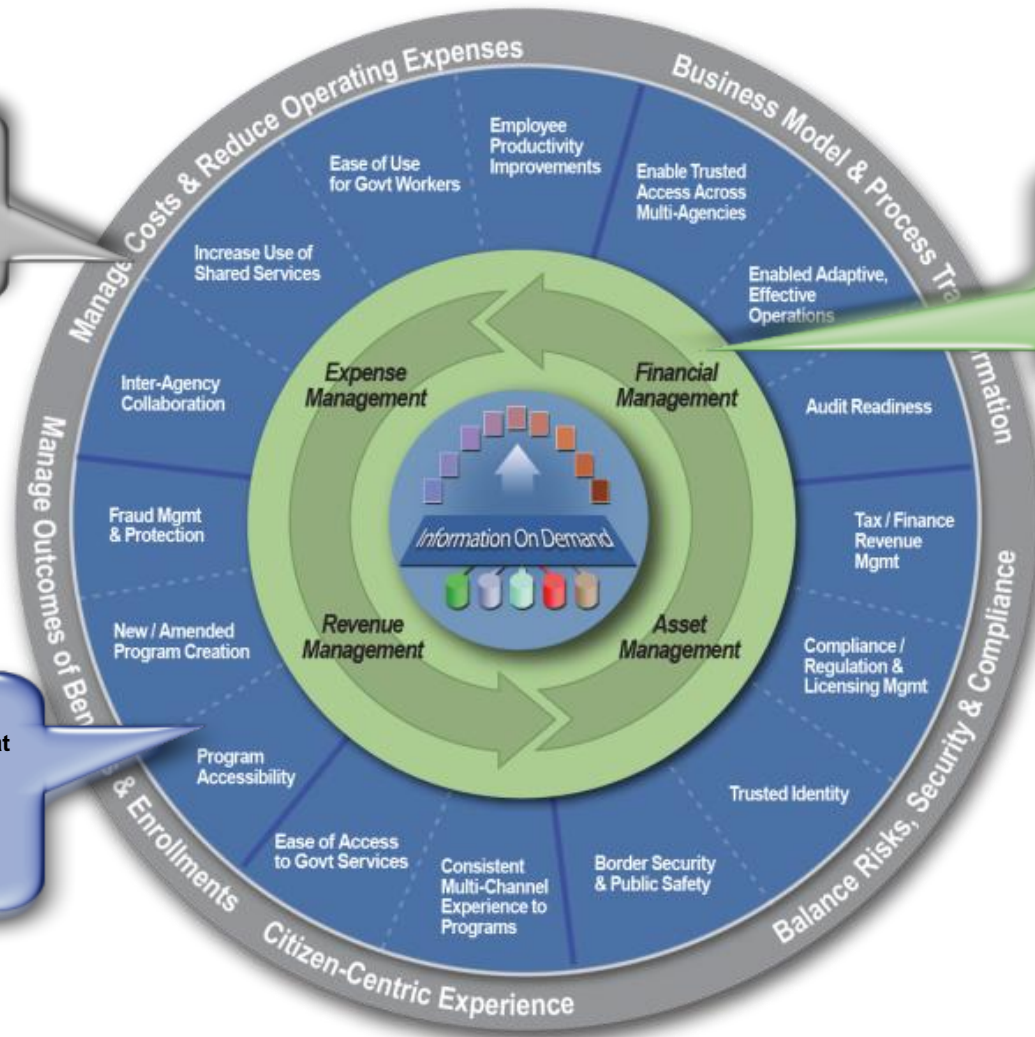
Top of mind areas critical to improving business performance.

### Business Competencies

Business areas and functions containing the skills and capabilities of the organization.

### Business Initiatives

Processes and activities that can be optimized through more effective use of information.



## Creating an Information Driven Healthcare Provider Organization



## Information Agenda Government Solutions supported by Information Infrastructure

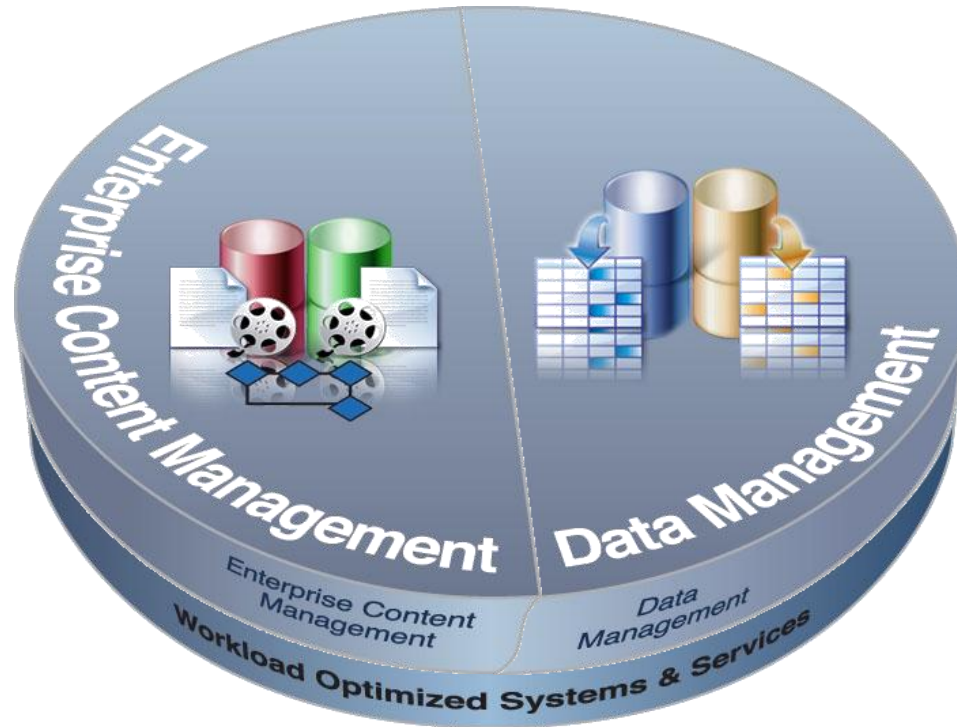


## Information Agenda Government Solutions supported by Information Infrastructure

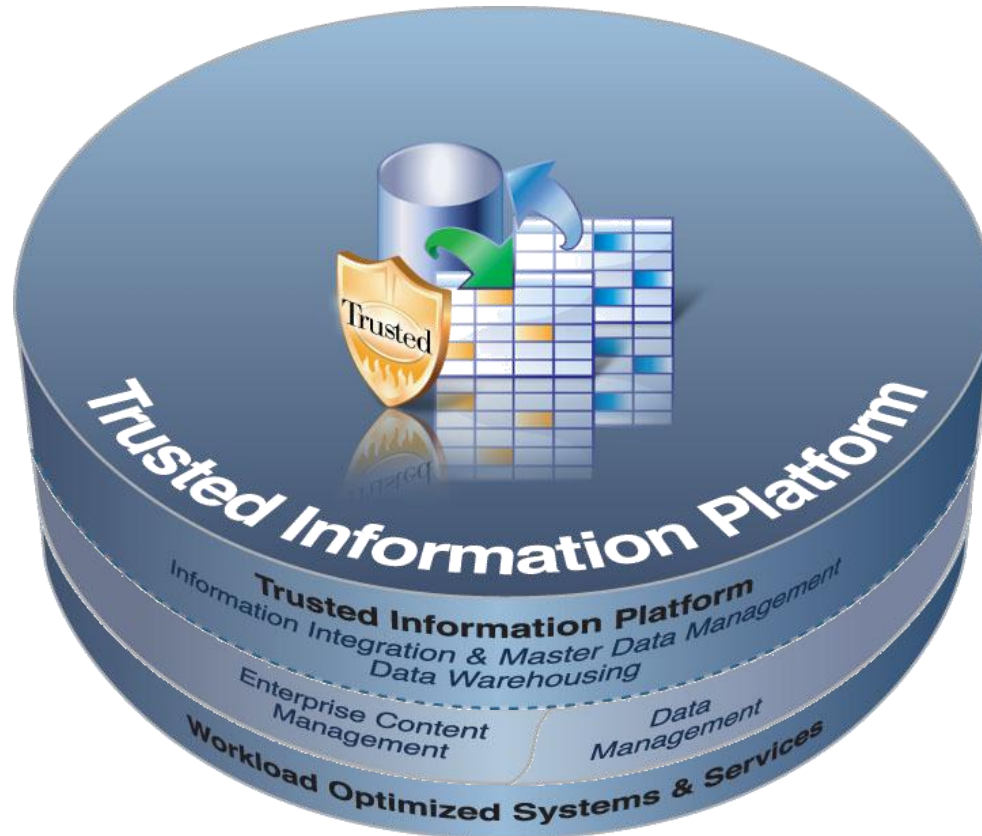




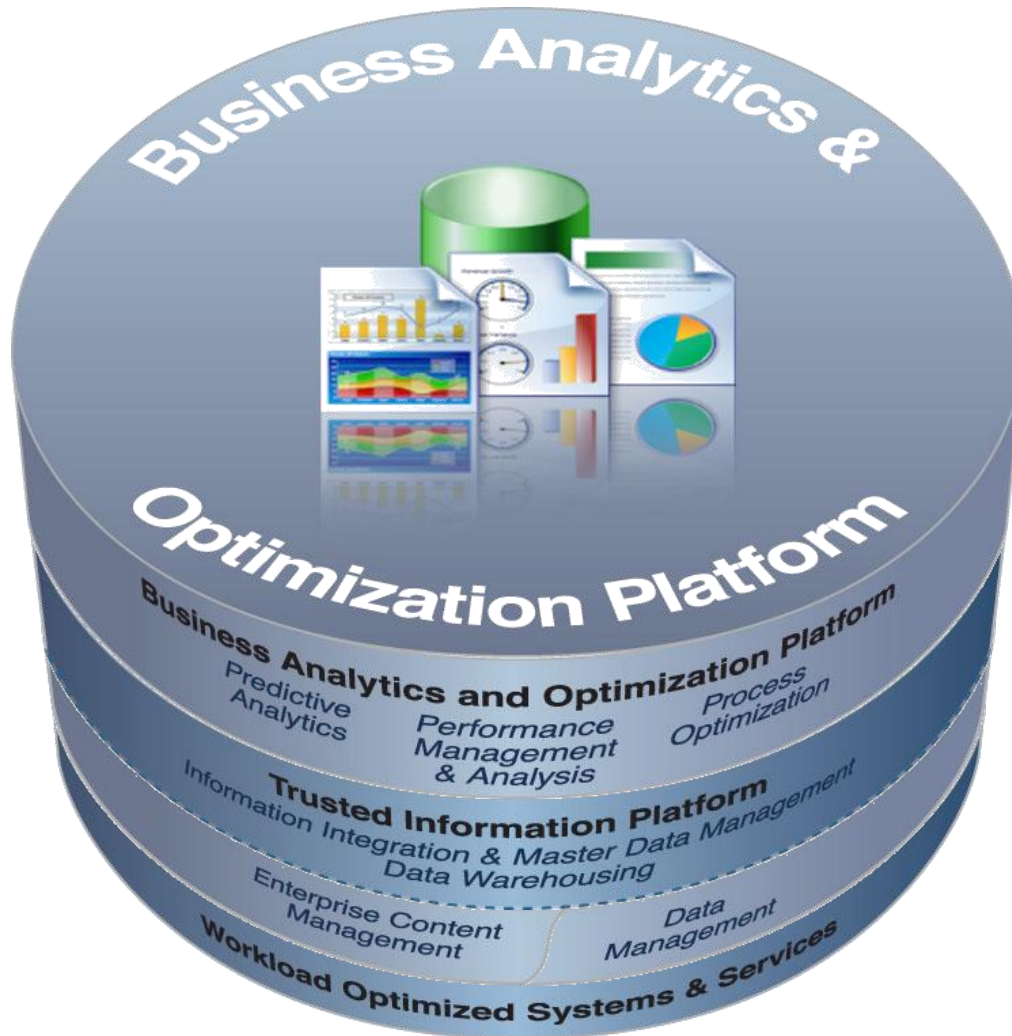
# Information Agenda Government Solutions supported by Information Infrastructure



## Information Agenda Government Solutions supported by Information Infrastructure



Information Agenda Government Solutions supported by Information Infrastructure



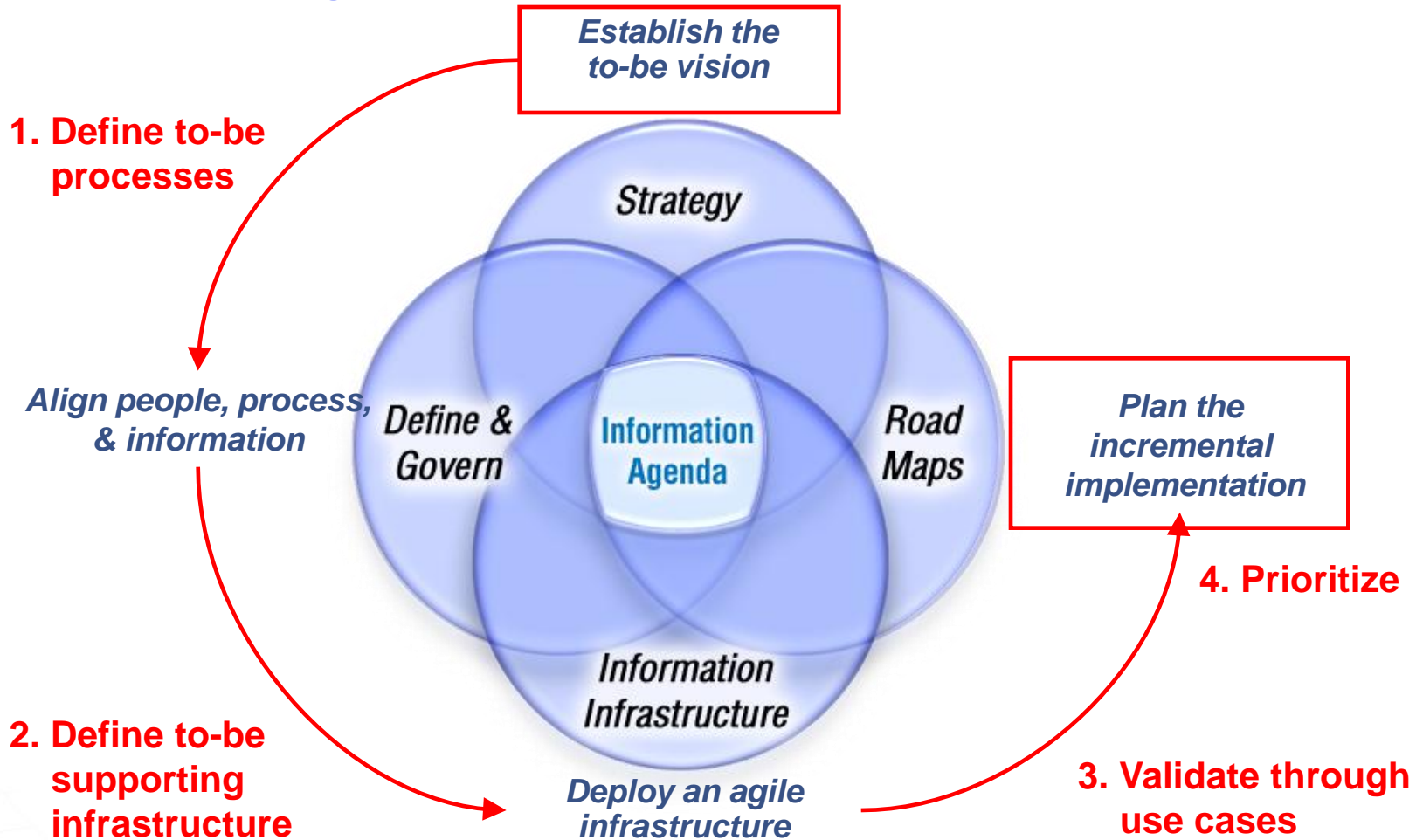
# Information Agenda Government Solutions supported by Information Infrastructure



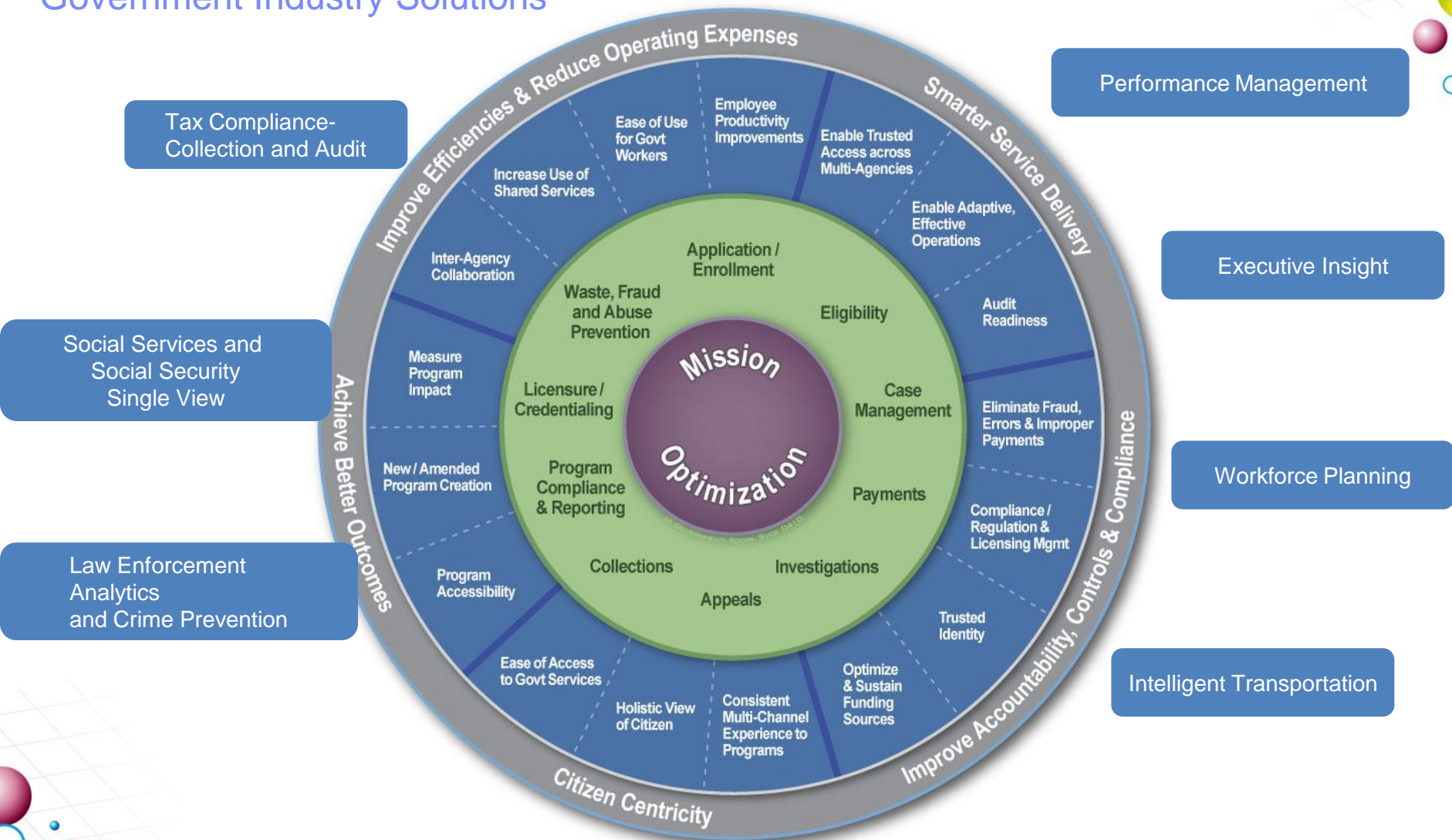
# Information Agenda Government Solutions supported by Information Infrastructure



An Information Agenda is the way to enable business value leveraging information as a strategic asset



## Government Industry Solutions



## Information Driven Public Safety & Justice



### Miami- Dade Clerk of Courts

Transformed traffic court case operations to eliminate paper, reduce staff and increase fine collection



### Richmond Police

Pinpoints hotspots & leads to 20-30% decrease in violent crimes



### NYPD

Dynamic ability to redeploy resources in response to crime patterns and trends by developing single point of access to crime data linked with GIS mapping and visualization tools to head off spikes in criminal activity..



### Edmonton Police

Police are able to see data in near real time, which helps them identify problems, associated trends and locations of crimes, so they can determine their response solutions..



## Information Driven Tax and Revenue

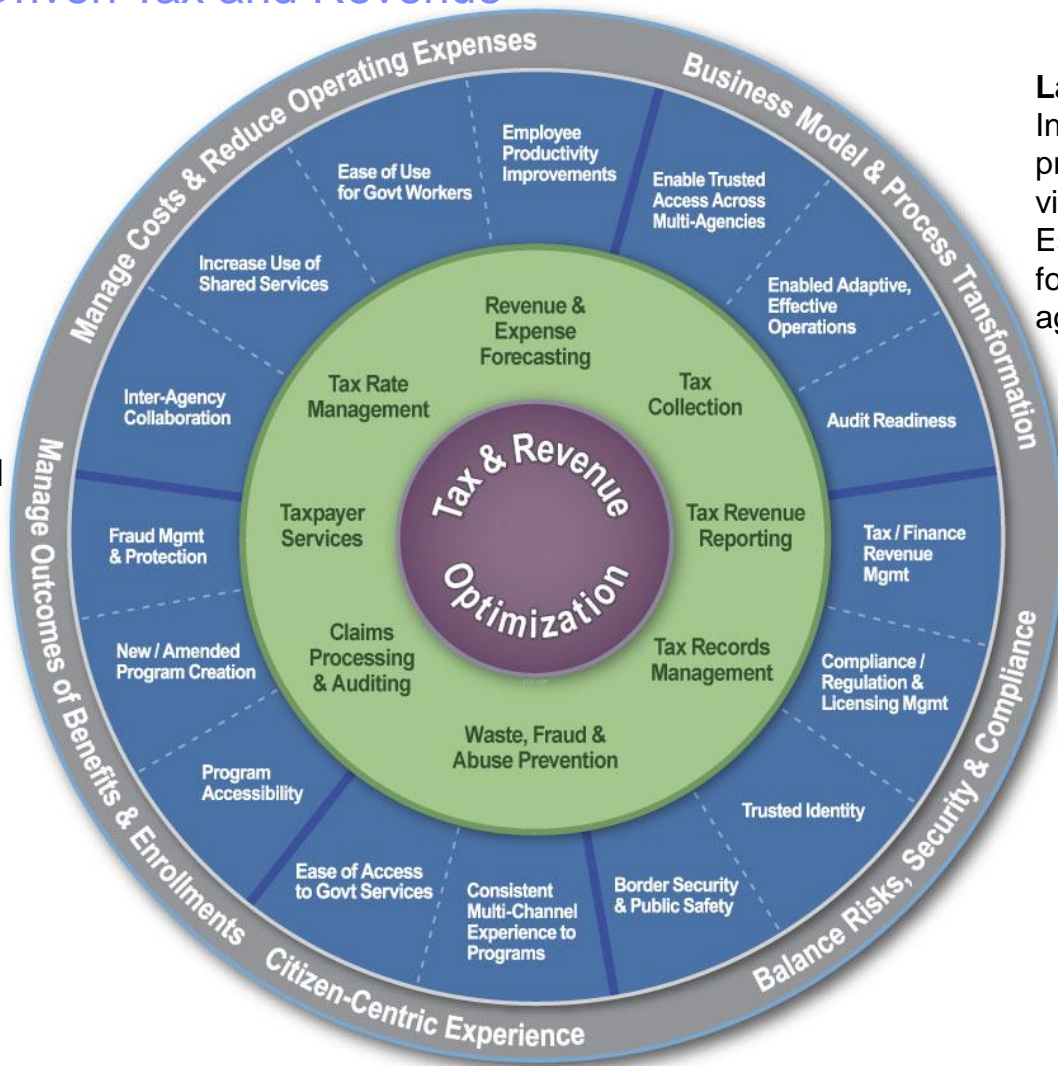


### Large Local Tax Authority

Integrated 200 databases and provided real-time access to single view of trusted data  
 Established an enterprise foundation for service delivery and fosters inter-agency collaboration



**Regional Tax Authority**  
 Improved tax compliance to avoid losing more than \$1 billion in revenue.



Deployed an electronic document filing service to speed processing, reduce errors and support processing of non-structured data

## Large Tax agency uses IBM's Tax Compliance solutions to predict non-compliance at the time a tax declaration is filed

### Challenge

New York DTF wanted to enhance current audit case selection methods for detection of audit issues at the time a return is processed. Specific audit programs include Earned Income Credit, Dependent Child Care Credit, Itemized Deductions, Wage/Withholding, and Identity Theft.

### Solution

IBM's Tax Audit and Compliance System (TACS). TACS applies business rules and predictive models to categorize and score returns nightly and identifies the 'next best case' for audit selection. In addition, a separate web based portal provides screening and resolution of cases.

### Benefits

- \$889 millions increase in revenue primarily from Refund denials in the first five years
- Increased screener and auditor productivity
- Enhanced taxpayer correspondence
- Improved audit program management



# Information Driven Social Services – Single View of Citizen

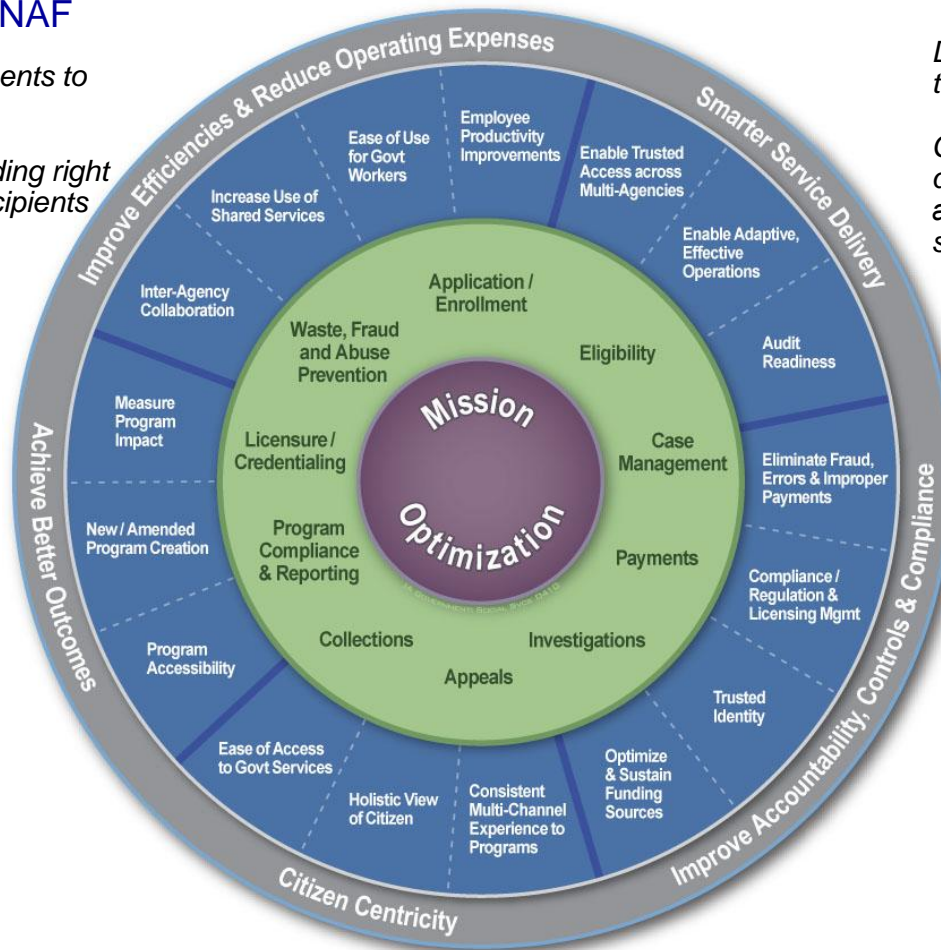


## Government of France CNAF

- Reduced level of improper payments to ineligible persons
- Increased effectiveness of providing right service to eligible citizens and recipients

Direct savings of over US\$11 million through waste reduction

Gives managers and caseworkers a deep, real-time understanding of case and program status and models “what if” scenarios based on current data



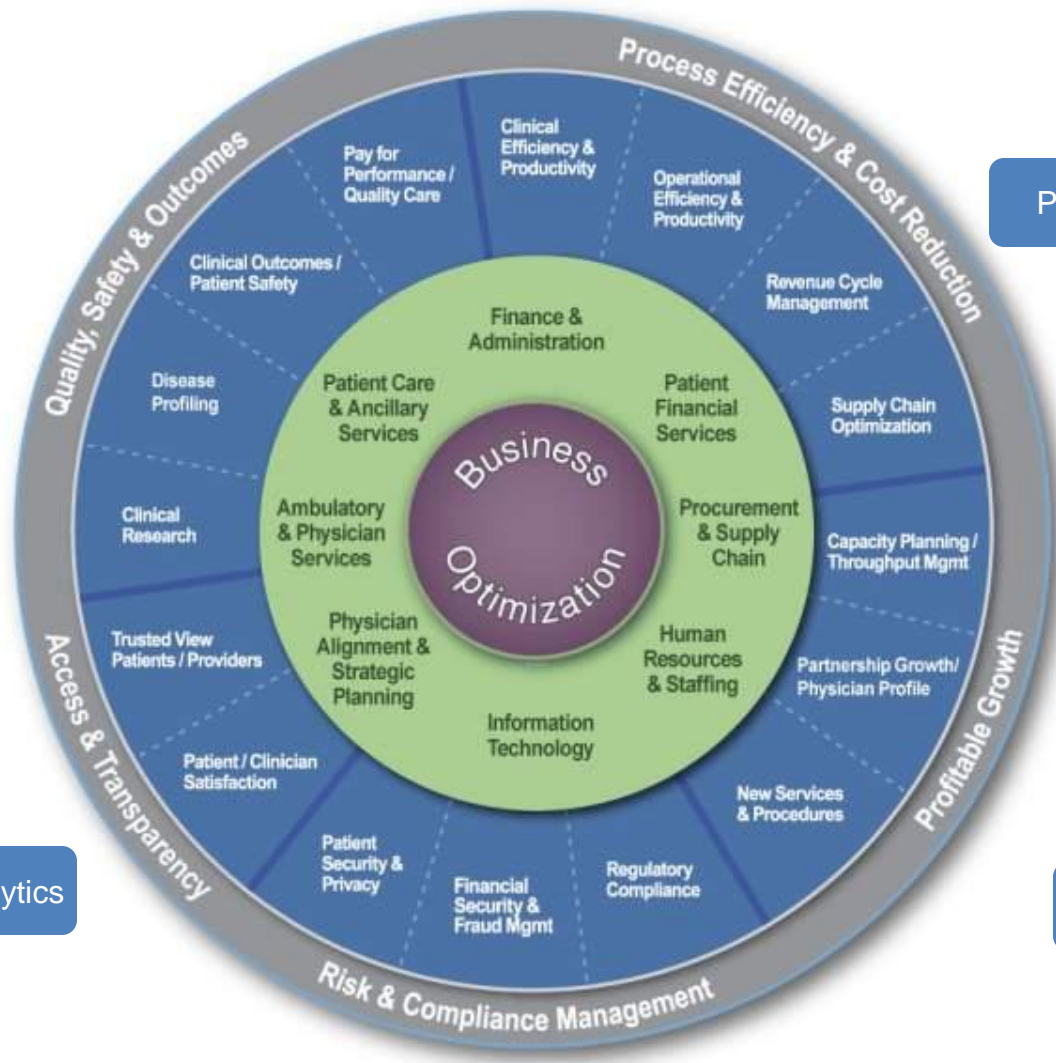
## Clark County Department of Family Services

Decreased reporting time  
 Monitors case worker compliance with state policies  
 Identifies bottlenecks and improves business processes



Gain a rapid understanding of citizens, applicants and providers across multiple programs and cases.  
 Increase the effectiveness of providing right service to eligible citizens and recipients

# Healthcare Provider Industry Solutions



Clinical Analytics

Performance Management

Single View Patient/ Disease

Executive Insight

Medical Records Text Analytics

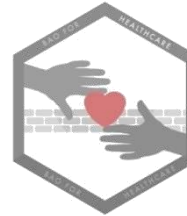
Workforce Planning

## Healthcare Applications - Analytics



### Beneficiary Analytics

- Understand beneficiary health and wellness needs
- Predict impact of programs, care, and lifestyle



### Quality of Care Analytics

- Assess comparative effectiveness
- Identify quality trends and monitor improvements



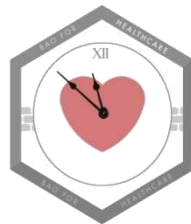
### Wellness & Chronic Disease Analytics

- Identify effective interventions
- Inform lifestyle and preventative care choices



### Operational Efficiency Analytics

- Identify fraud/waste/abuse
- Target early intervention and remediation



### Incentive Analytics

- Understand quality outcomes and efficiency
- Monitor of Pay for Performance indicators/incentive payments

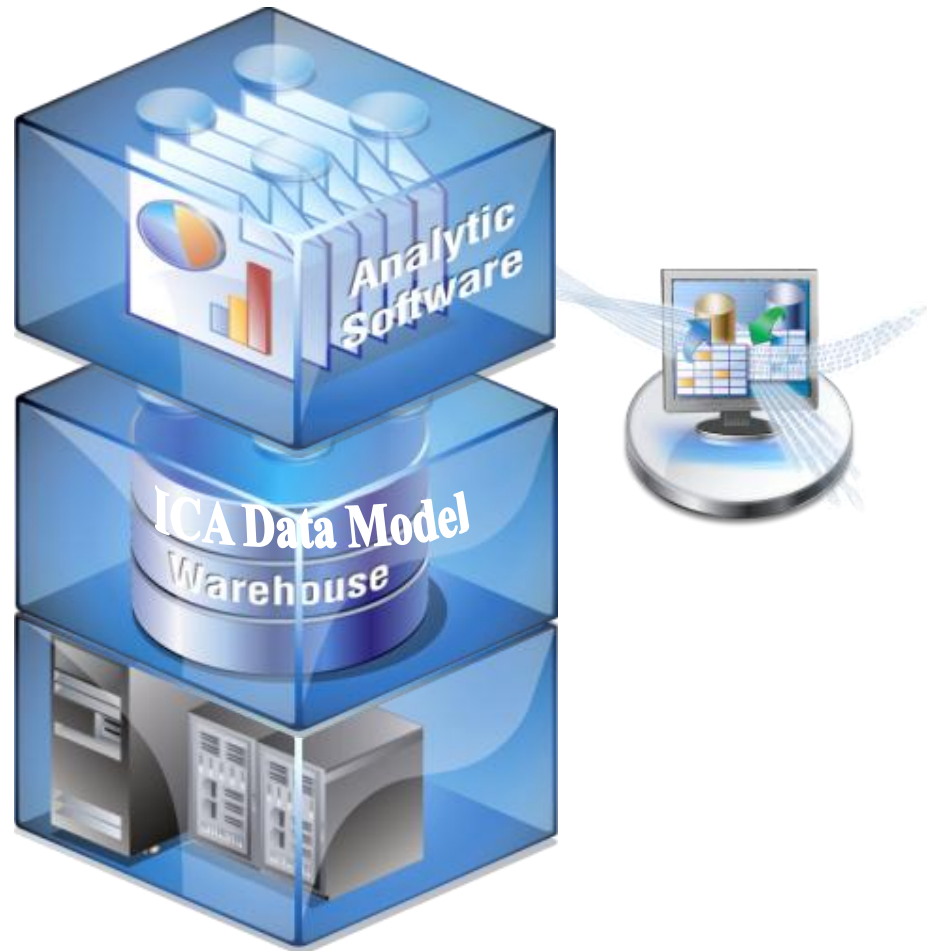
## InfoSphere Clinical Analytics

### Fully integrated Assets for building a CDW:

- ✓ Server + Clinical Data Warehouse +Solution  
Templates + Tools + Dashboards

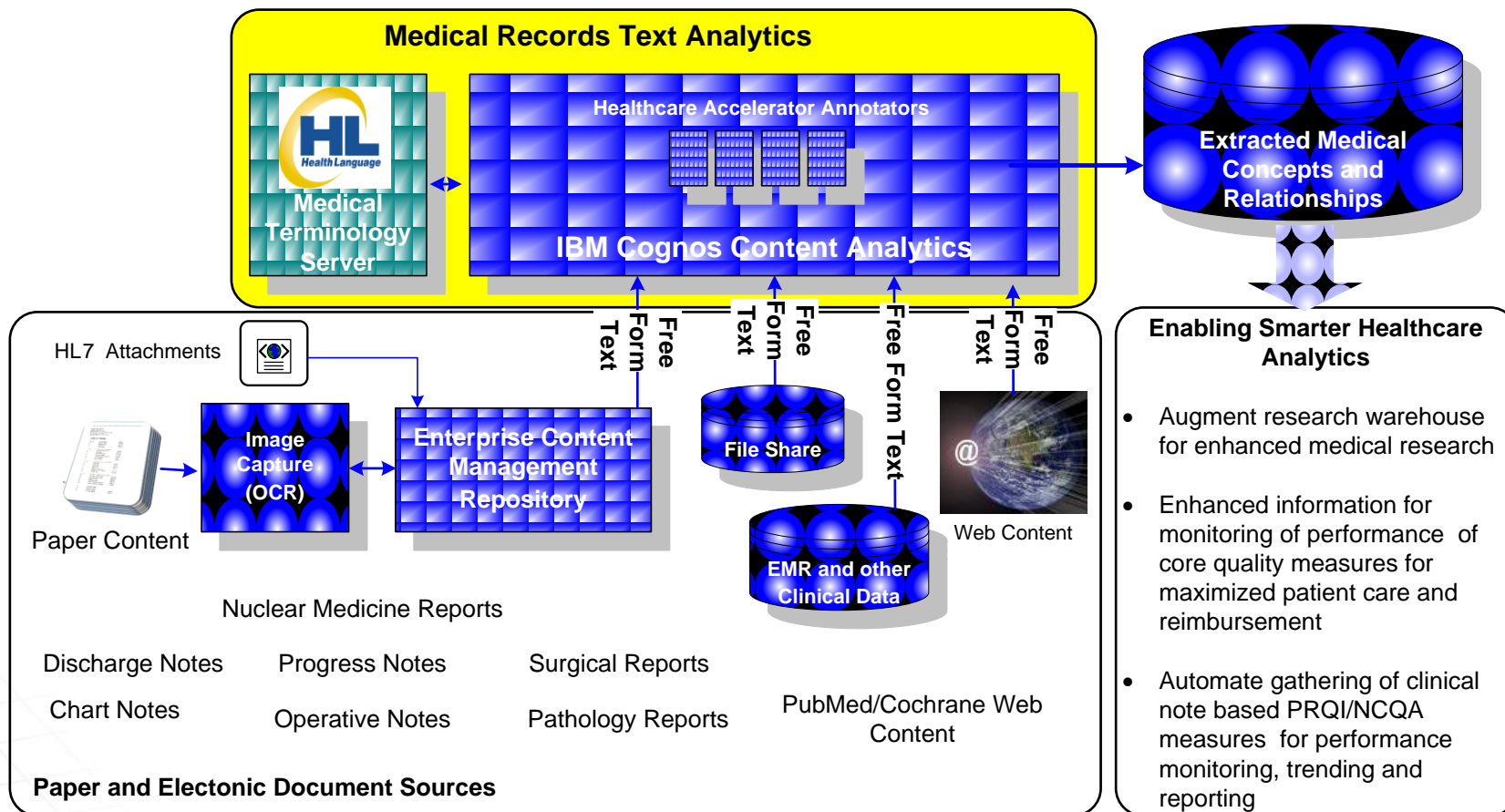
### Unique features:

- ✓ Create longitudinal record from inpatient, outpatient, specialty and ambulatory care setting
- ✓ Source data system agnostic
- ✓ Patient record De-Id and Re-Id
- ✓ Data validation 1,000+ Programs
- ✓ Medical vocabulary mapping
- ✓ Standards support
- ✓ Cohort screening application
- ✓ Analysis of whole organization down to physician and patients



## Medical Records Text Analytics Solution

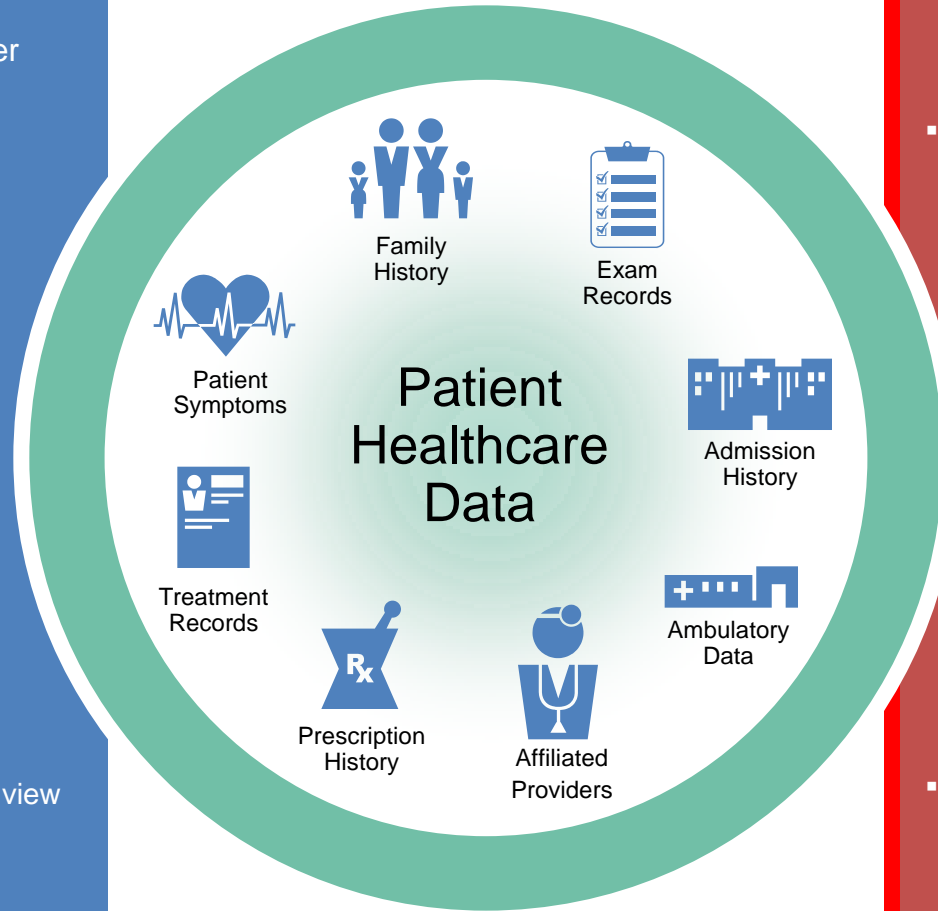
*CCA Platform / Healthcare Annotators Accelerator / Health Language*



## IBM Initiate solutions enable HIE

### IBM® Initiate® Patient IBM® Initiate® Provider

- Support data sharing across patient domains
- Enable trusted and un-trusted data to work together
- Leverage patient & provider relationships
- Communicate consistently with providers
- Create an accurate view of patients and providers

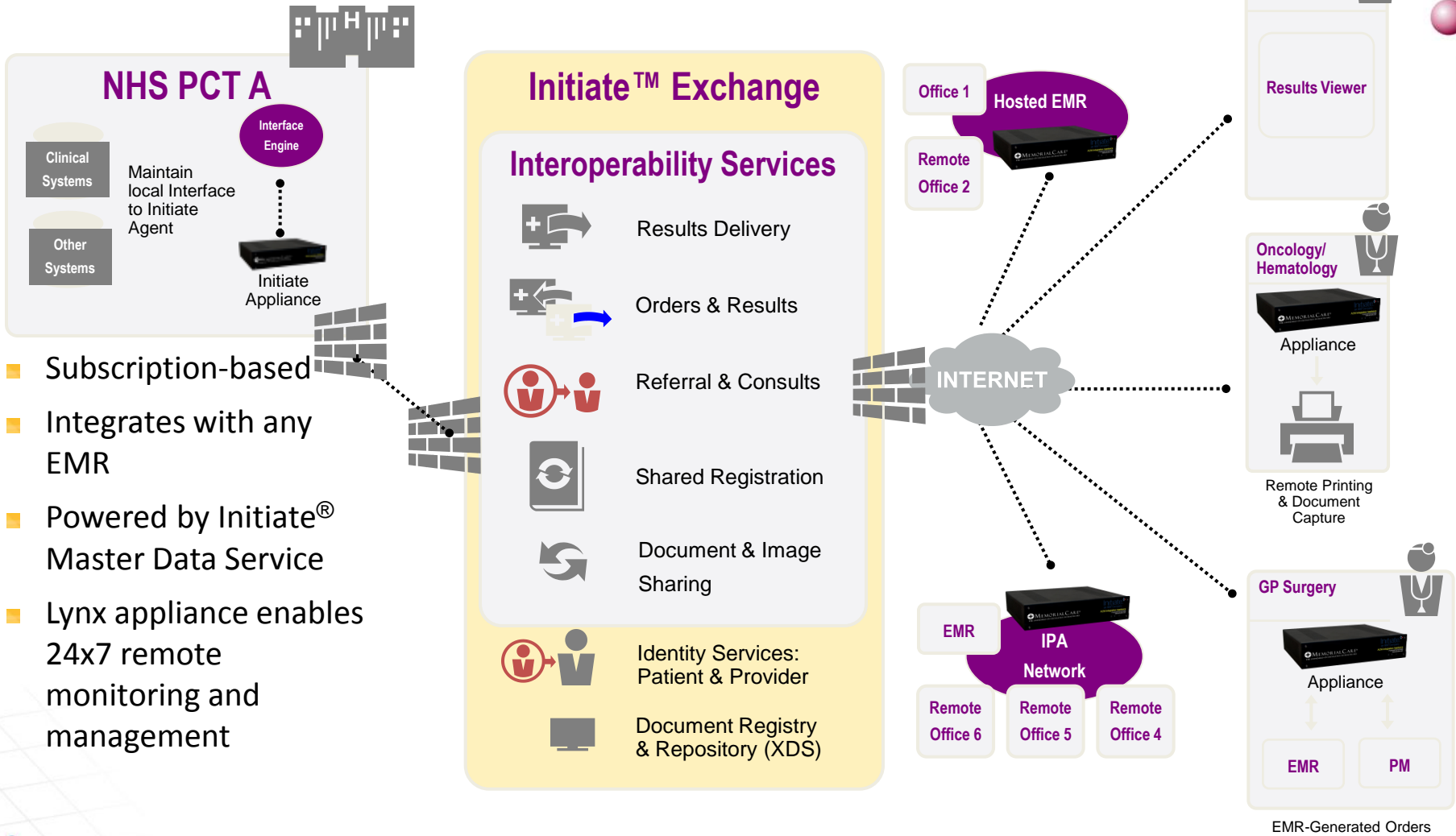


### IBM® Initiate® Exchange

- Create competitive advantage
- Easier to work with
- Remove technical and political barriers to information sharing
- Create clinical workflow efficiencies
- Pay as participants perceive value



## Initiate™ Exchange



- Subscription-based
- Integrates with any EMR
- Powered by Initiate® Master Data Service
- Lynx appliance enables 24x7 remote monitoring and management

## NYU Langone Medical Center: Clinical Analytics

### **Business challenge:**

NYU Medical needed to connect several disparate clinical and financial systems into a single aggregated patient data warehouse. They needed to accomplish this in less than a year to meet current regulatory and University reporting requirements. It was critical for them to provide timely patient care data for analysis while the hospital migrates from Eclipsys to EPIC EMR while keeping within their already small IT resources.

### **What we did:**

- Implemented InfoSphere Clinical Analytics solution on the IBM InfoSphere Balanced Warehouse
- IBM InfoSphere Balanced Warehouse provides embedded technologies, such as deep compression, which help exceed performance of existing data warehouse solutions
- Advanced analytics software enables healthcare providers to easily perform ad hoc queries and complex analytics across terabytes of detailed clinical data.
- Integrated administrative tools

### **Results:**

- Normalization between the EMR systems is being done utilizing ICA -provided heuristic description resolution tools to perform the mapping of local reference codes to standards
- Additional data sources can be added over time while maintaining the integrity of the patient record allowing NYU Medical to grow their environment through an evolving process
- Improves access to key patient and provider insights by enabling automated and ad hoc queries and complex analytics with terabytes of detailed clinical data



*Using the ICA development platform provides the ability to automate the integration of patient data from EMR, ADT and Ancillaries into a single longitudinal patient record in a central trusted warehouse. All with an ROI of 20 weeks*

## Social Security Administration: *Predictive Modeling for Disability Claims*

### Business challenge

The SSA was faced with two primary problems with their processes for reviewing and approving disability benefits for disabled citizens. The process for performing doctor reviews for Continuing Disability Reviews (CDR) was too expensive, and they had a huge backlog of new disability applications that needed to be processed.

### What we did

- Developed a suite of predictive models that included advanced text analytics to infer meaning from unstructured data in disability applications
- Developed logistic regression models to automatically score applications and continuing disability reviews to identify potential quick decisions.

### Results

- In use for the last 8 years, the CDR model has saved SSA over \$2 billion in reduced doctor review costs.
- The predictive model for reviewing new disability applications has reduced the average cycle time for approving an application from 90 days to 20 days.
- Spared thousands of disabled citizens from the burden of medical reviews.



*SSA leverages one of the largest content management systems ever built to efficiently process disability claims in a paperless environment.*



Resources at your disposal ...

*Moving forward*



### **1. Learn More About Information Agenda...**

Insights, interviews, case studies and more

<http://www-01.ibm.com/software/data/new-intelligence/plan/>

### **2. Learn about the Information Agenda Industry Solutions to Accelerate your Success**

Solutions for Government

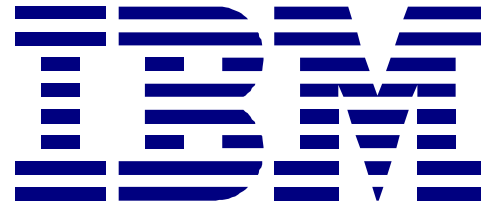
<http://www-01.ibm.com/software/data/information-agenda/catalog/government.html?industry=government>



### **2. Engage the IBM Information Agenda Team**

Explore your options or schedule an information agenda workshop

# Thank you!

The IBM logo, consisting of the letters 'IBM' in a bold, blue, sans-serif font. Each letter is composed of eight horizontal stripes of varying lengths, creating a distinctive striped pattern.

IBM Software

# Information On Demand **2010** Comes To You

Unlock the True Value of Your Information