

# Application Portfolio Management in Action

*Reduce Cost and Improve Business Agility*



## Agenda

- What is APM
- APM in action
- Conclusions

## Adopt an Application Portfolio Management Practice



Application portfolio management (APM) is a repeating process using information and analytics that produces objective and transparent decisions around investing, consolidating, modernizing, or replacing applications.

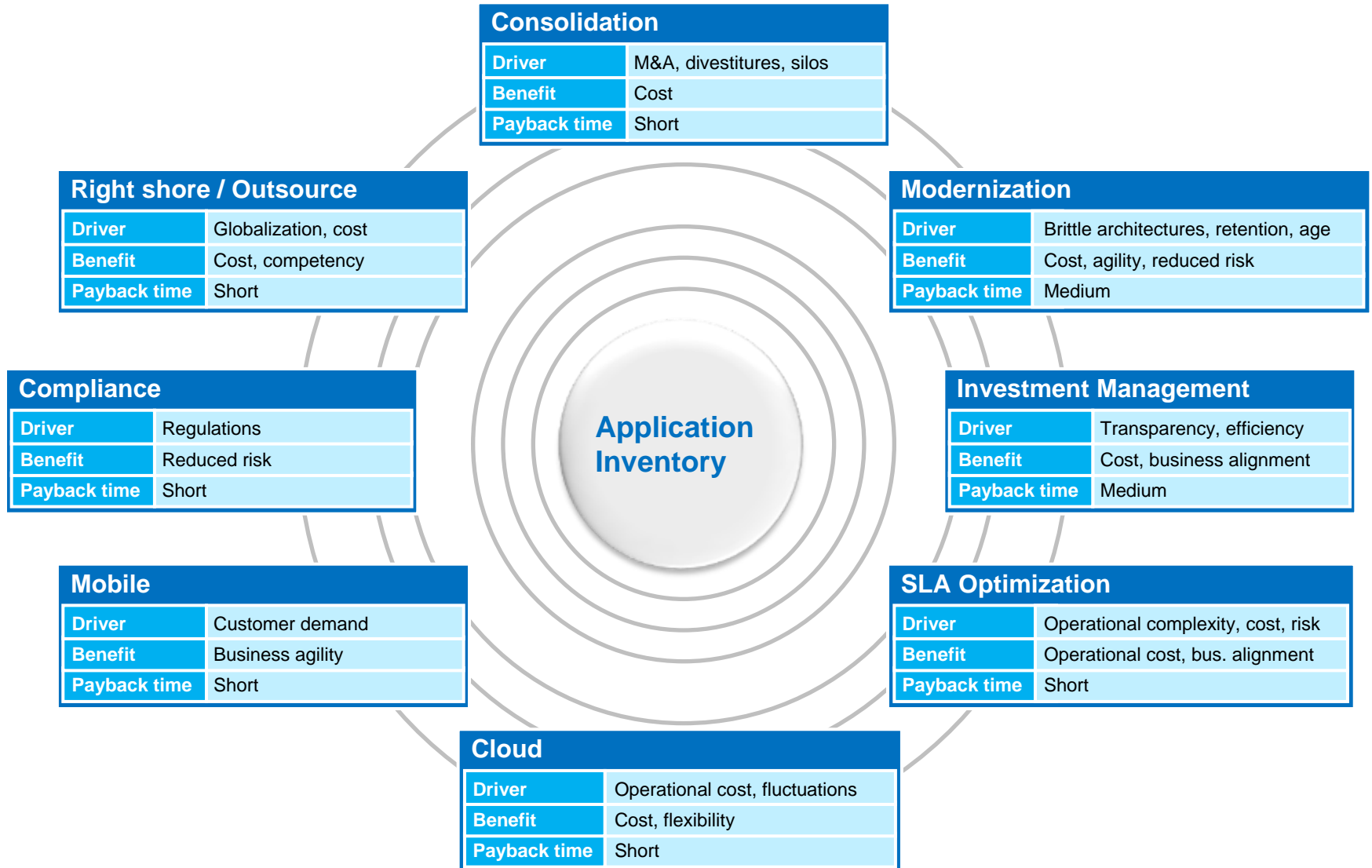
### Benefits:

- Align the application portfolio with business strategies
- Reduce costs and optimize value
- Increase speed-to-deployment and speed-to-market
- Reduce risk associated with technology or resources
- Implement shared services

***Application Portfolio Management needs to be informed by Enterprise Architecture to enable good decision making***

# Smarter Computing business outcomes

## APM-driven scenarios



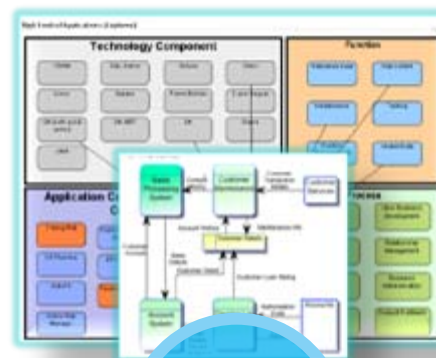
# Delivering value: From decisions to execution



Analysis, decisions, governance, execution roadmaps

**Collaborative Decision Making**

IBM Rational Focal Point



*Architectural Context*

**Architectural Deep Dives**

Impact analysis, architectural roadmaps, future visioning

IBM Rational System Architect

*Execution status* / *Execution roadmap*

**Integrated Application Lifecycle Management Solutions**

Project execution in collaborative team environment

*Execution Tracked*

**Enterprise Modernization Solutions**

Application flexibility, individual and team productivity, and system utilization

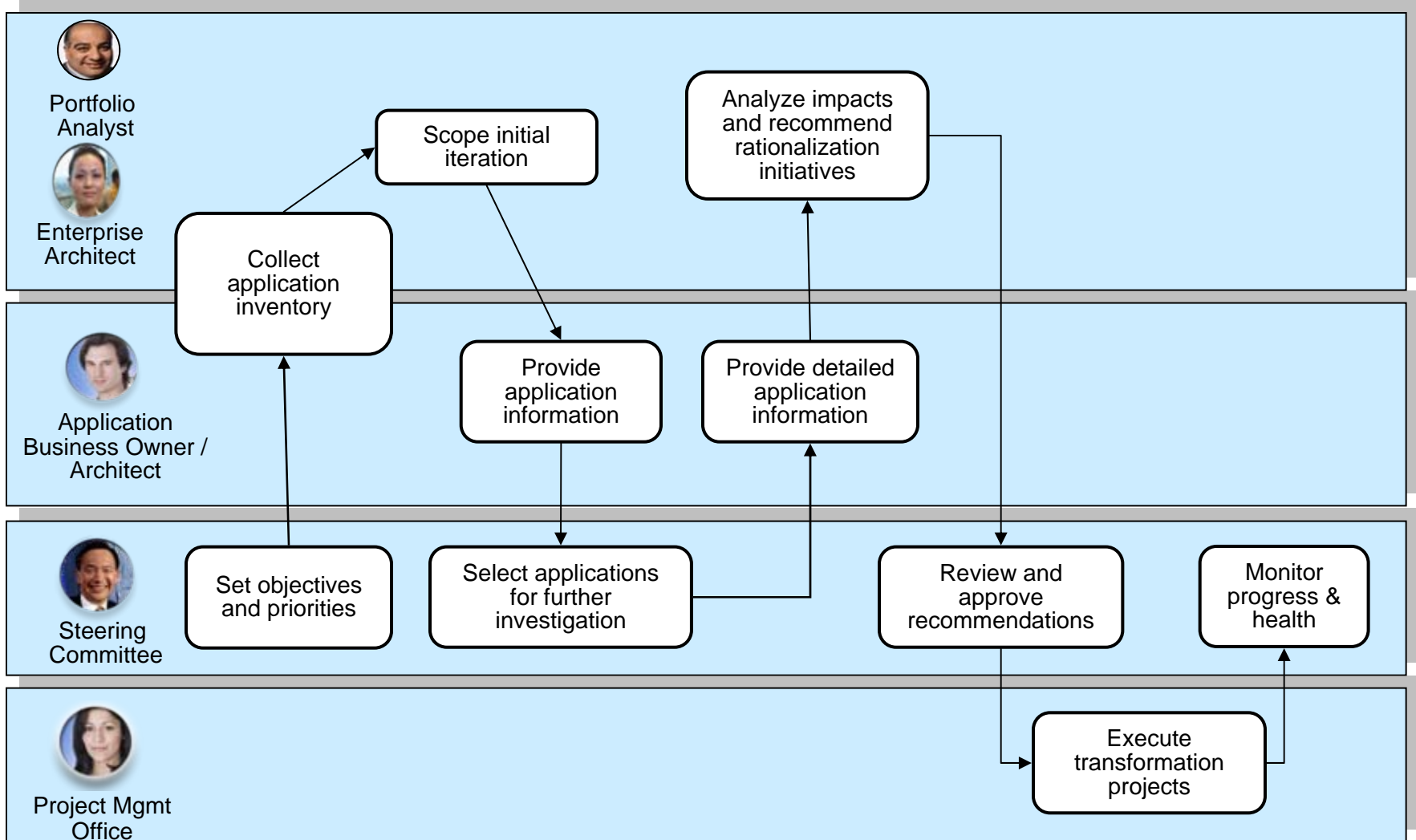


***APM decisions and plans are executed and tracked in solutions for Application Lifecycle Management and Enterprise Modernization***

## Agenda

- What is APM
- APM in action
- Conclusions

# Application portfolio rationalization workflow





[www.ibm.com/software/rational](http://www.ibm.com/software/rational)

<https://www14.software.ibm.com/iwm/web/cc/earlyprograms/rational.shtml>



## Provide a single source of truth

*Harvest existing inventory and leverage extended team*



**Application Architect**



**Application Business Owner**

The screenshot displays the Rational Focal Point interface. The main window shows the 'Assess - Business' view for 'Amdocs Billing'. The interface includes a navigation pane on the left with options like 'My Applications', 'Application Roadmap', and 'Projects I submitted'. The main content area shows the 'Assessment State' and 'Current State' sections. The 'Current State' section displays a flow from 'Assess' to 'Info Gathered'. Below this, a table lists various metrics for 'Amdocs Billing'.

Amdocs Billing	
Name	Amdocs Billing
Portfolio	Finance Portfolio
Primary Business Strategy	Integrated CRM Systems
Projected Annual Cost	0
Total Lifetime Costs	200,000
Business Alignment	4 - High
Business Criticality	3 - Medium
Business Risk	4 - High
Total Business Alignment Score	57
Total IT Alignment Score	75
Excessive SLAs Level	3
Classification	Gold
Recommendation	

- Rapidly import inventory from existing spreadsheets
- Web-based entry through role-based views
- Provide filters to make data entry trivial
- Increase data quality through choice selections and built in quality assurance steps

# Application improvement potential

Identify candidate applications to be decommissioned or modernized



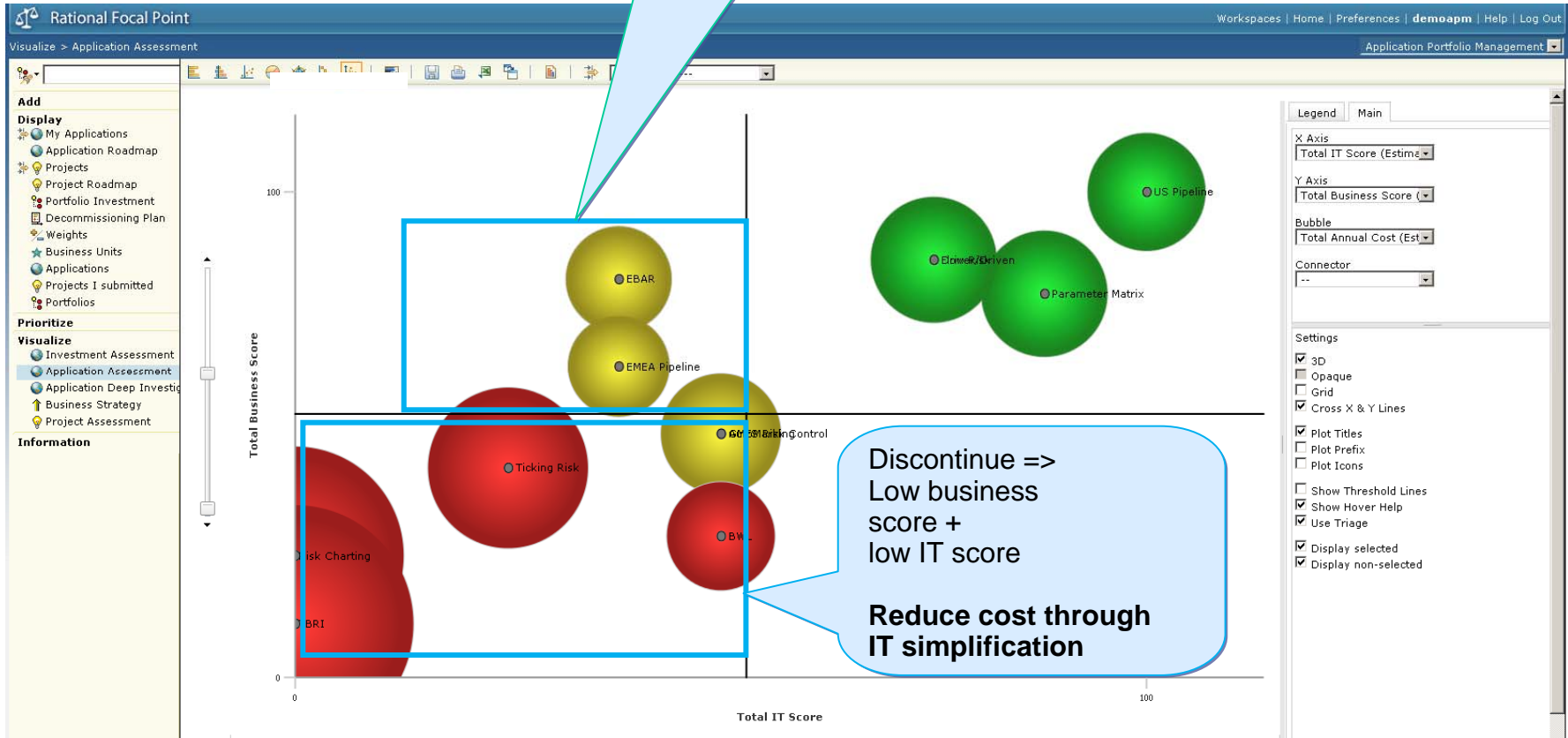
Portfolio Analyst



Enterprise Architect

Modernize =>  
High business score + low IT score  
  
Increase business agility through modernization

Discontinue =>  
Low business score + low IT score  
  
Reduce cost through IT simplification



# In-depth Analysis

Understand architecture; impact, options, roadmaps

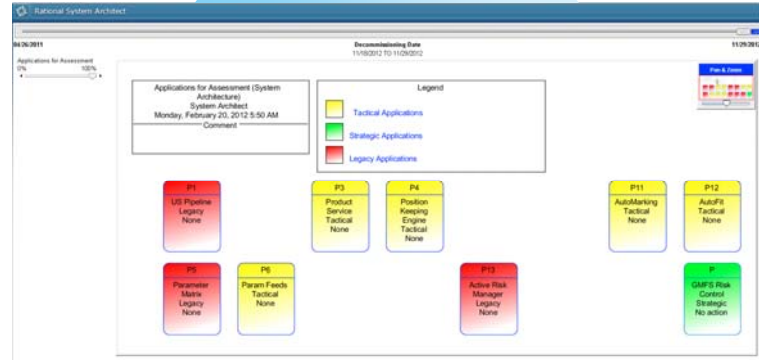
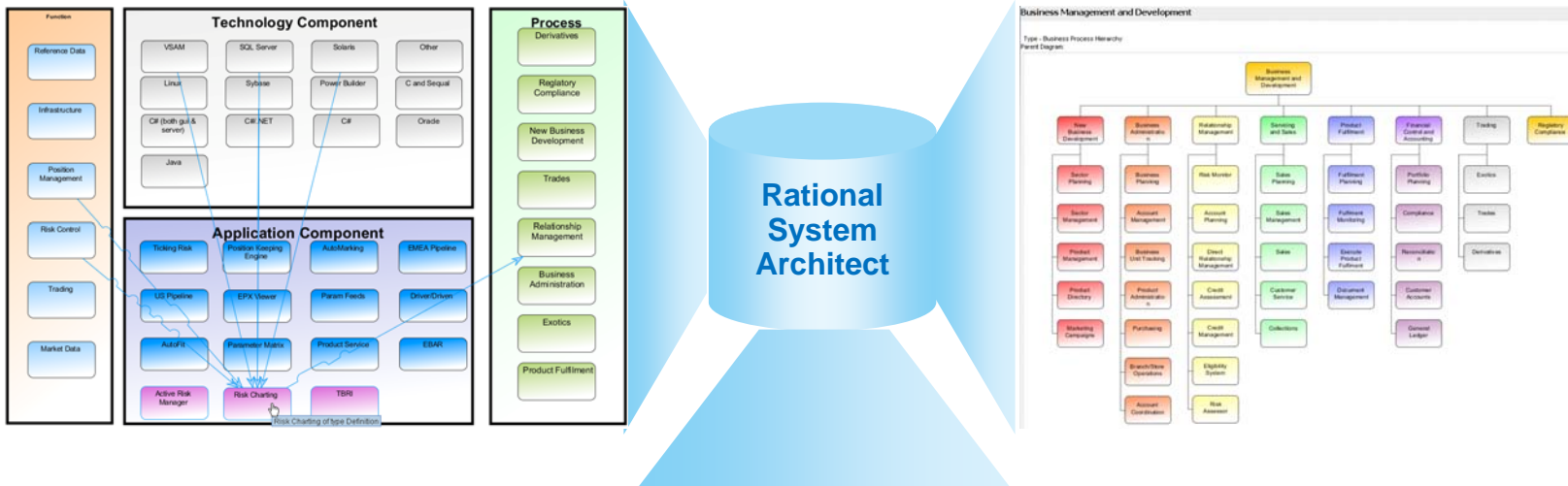


Application Architect



Application Business Owner

- Be informed using IBM Rational System Architect, for Enterprise Architecture



# Collaborative Decision Making

*Evaluate and prioritize rationalization projects*



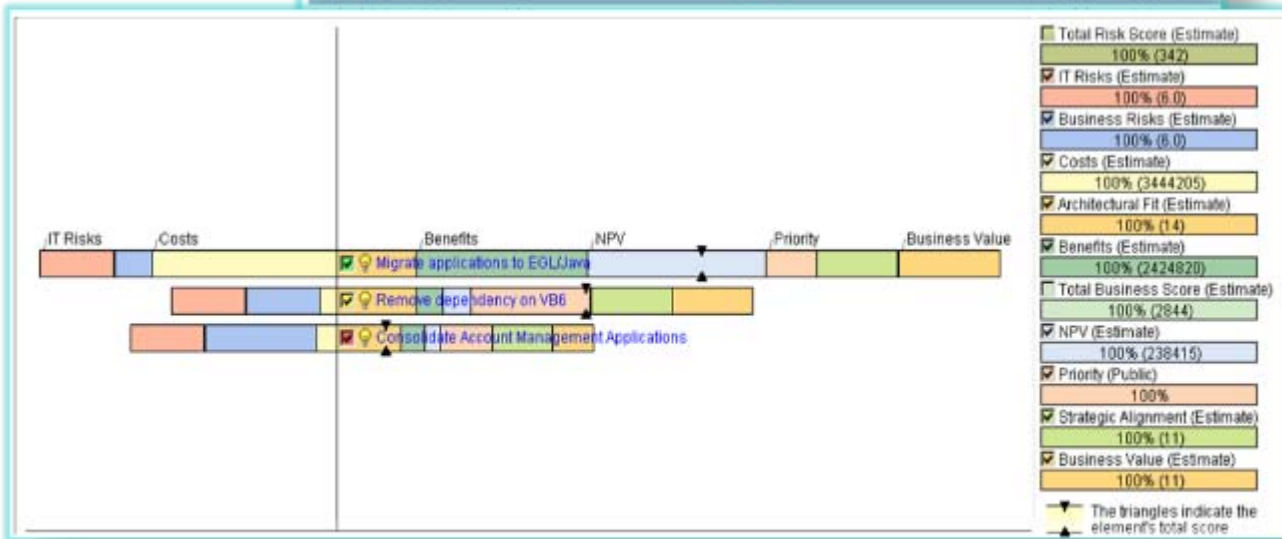
**Steering Committee**



**Project Mgmt. Office**

Which Project has higher "Priority"?

Migrate applications to EGL/Java	Consolidate Account Management Applications
ID: 000	ID: 004
Priority: 0	Priority: 0
Name: Migrate applications to EGL/Java	Name: Consolidate Account Management Applications
Description: This opportunity covers migrating applications from Natural / Adabas to EGL.	Description: Support arrangements for these applications are unclear - as these have been excluded from the scope of any current / future plans. Tactical Reprioritisation is required to resolve support issues as it is unclear whether they have adequate support arrangements given their importance to the business. It is recommended that in the longer term they are strategically Replaced by industry standard applications.
State: Assess	State: Assess
Alternates Group: -	Alternates Group: -
Owner: -	Owner: -
Architect: -	Architect: -
Planning Data: -	Planning Data: -
Scorecard: -	Scorecard: -



- Compare projects side by side using pair-wise comparison
- Visualize project priority base on defined project criteria

## What Did We See

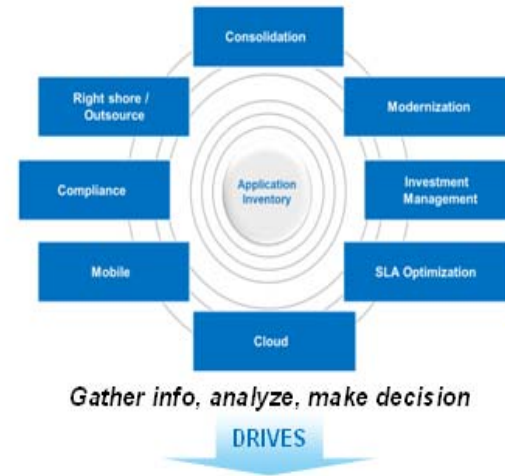
- Manage the Portfolio, Track Assessments, and Track the Transformation to future state
- Do High-level assessment of the Portfolio to identify candidate applications warranting a deeper look
- Do deeper investigations with impact analysis where warranted
- We could outline architectural alternatives and architectural roadmaps
- Architectural alternatives could be translated into project proposals, which could be assessed based on qualitative and quantitative (e.g. ROI) analysis
- Project roadmaps could be produced to complement architectural roadmaps

## Agenda

- What is APM
- APM in action
- Conclusions

# What are driving success

- The approach to EA
  - Start with the decisions to make
  - Who needs to be involved in the decision making?
  - What is the minimum set of information needed to make the decisions?
  
- Executive sponsorship
  
- Establish a single source of truth
  
- Business – IT collaboration
  
- Incremental adoption



**Strengthened business and IT collaboration**

## Usage scenarios across multiple adoption paths

### Portfolio-lead APM

- Focus areas:
  - APM as a governance process supported by analytics
  - Collaborative decision making
  - Establishing project roadmaps
- Solution:
  - **Rational Focal Point:** Analyze application portfolio, identify candidate decisions, prioritize options, and propose and plan projects
  - **Rational System Architect:** Optionally use to investigate candidate decisions identified in Rational Focal Point
- When appropriate:
  - Currently using spreadsheets or initiative driven without mandating the rigor of a mature enterprise architecture practice

### Enterprise Architecture-lead APM

- Focus areas:
  - Understanding the enterprise context of applications
  - Evaluating architectural alternatives
  - Establishing architectural roadmaps
- Solution:
  - **Rational System Architect:** Understand the enterprise architecture, define solution alternatives, and produce architectural roadmaps
  - **Rational Focal Point:** Prioritize solution alternatives identified in System Architect and propose and plan projects
- When appropriate:
  - Mature enterprise architecture practice in place or is being established

***These two starting points often evolve to a model benefiting from both perspectives***



## Next steps: Two options

*Moving towards increased strategic spend and improved business agility*

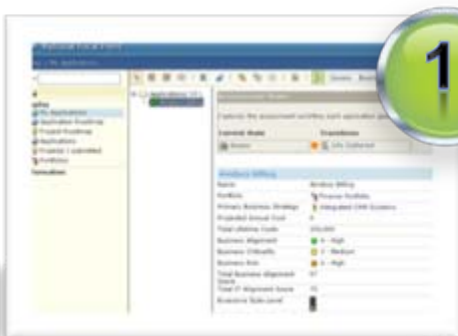
### 1/2-day APM Executive Workshop

- What are your desired outcomes from the APM effort?
- What decisions do you need to support?
- What information and analytics are needed to support those decisions?
- What roles are involved in the information gathering and decision making?

### 1-day Proof of Technology

- Instructor-led lab exercises
- Hands-on walkthrough leveraging sample application inventory
- Walk through several end-to-end Application Portfolio Management scenarios

## Call to action



1

### See APM in Action!

*Attend the Demo in the IBM Application Lab from 2:00 – 2:45*

2

**Stop by the IBM Pedestal**  
*Interact with our zEnterprise and APM experts*



3

### Visit [www.ibm.com/rational](http://www.ibm.com/rational)

*Get latest news on Mainframe Software for System z and zEnterprise*

## Resources

- Smarter Computing
  - [Software for System z and zEnterprise](#)
  
- IBM Software Capabilities
  - [Business Planning and Alignment](#)
  - [Enterprise Modernization](#)
  
- APM content on [ibm.com](http://ibm.com)
  - whitepapers, demo, podcast, video etc.
  
- APM reference stories: [North American Bank](#) , [Global Conglomerate](#)
  
- APM Forrester Research report on monetized value that IBM Rational customers experienced
  - Provided on request
  
- APM whitepaper: [Empowering the CIO](#)
  
- APM Content on [developerWorks](#)
  - demos, presentations, User Guides, etc.

# QUESTIONS

[www.ibm.com/software/rational](http://www.ibm.com/software/rational)

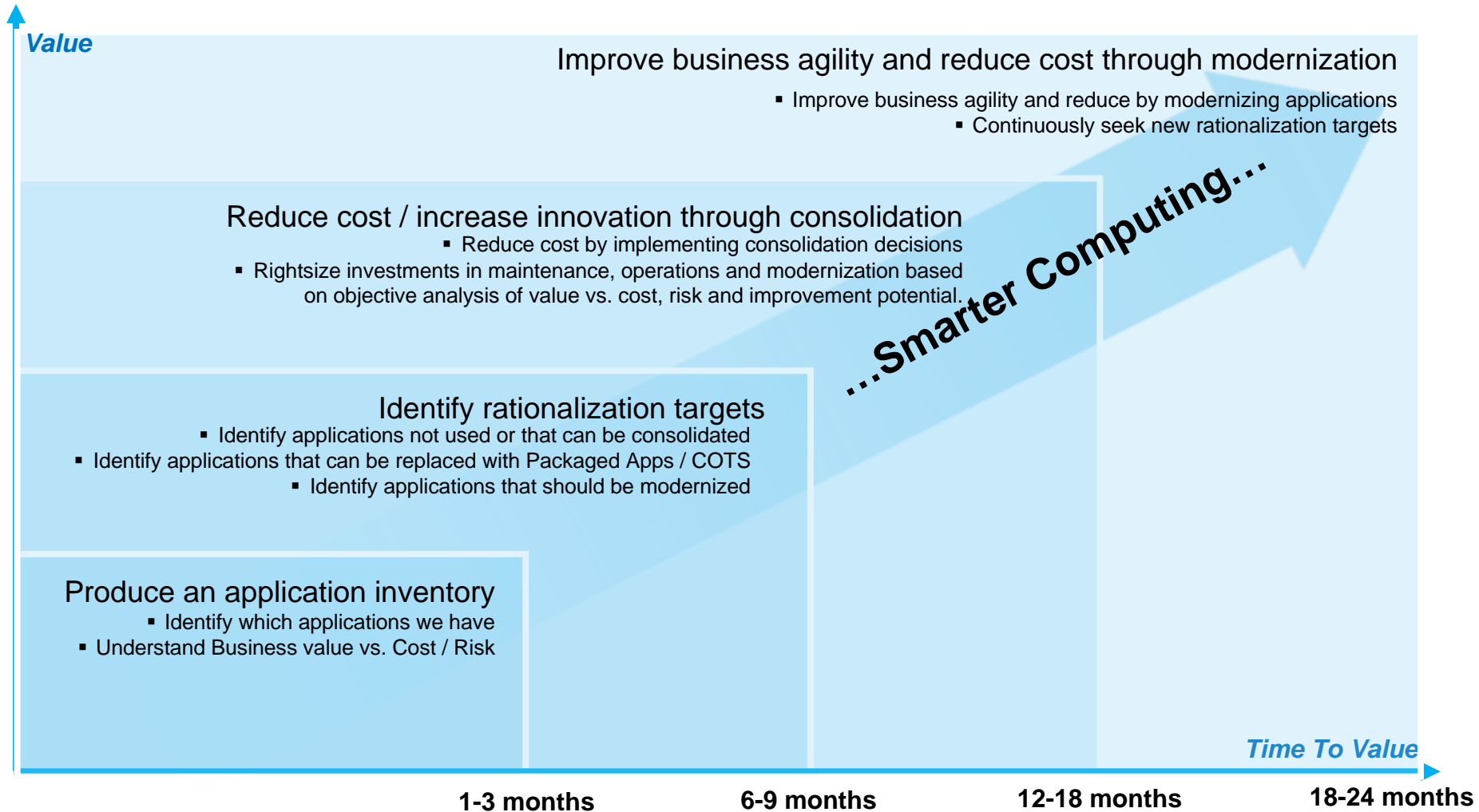


[www.ibm.com/software/rational](http://www.ibm.com/software/rational)

© Copyright IBM Corporation 2012. All rights reserved. The information contained in these materials is provided for informational purposes only, and is provided AS IS without warranty of any kind, express or implied. IBM shall not be responsible for any damages arising out of the use of, or otherwise related to, these materials. Nothing contained in these materials is intended to, nor shall have the effect of, creating any warranties or representations from IBM or its suppliers or licensors, or altering the terms and conditions of the applicable license agreement governing the use of IBM software. References in these materials to IBM products, programs, or services do not imply that they will be available in all countries in which IBM operates. Product release dates and/or capabilities referenced in these materials may change at any time at IBM's sole discretion based on market opportunities or other factors, and are not intended to be a commitment to future product or feature availability in any way. IBM, the IBM logo, Rational, the Rational logo, Telelogic, the Telelogic logo, and other IBM products and services are trademarks of the International Business Machines Corporation, in the United States, other countries or both. Other company, product, or service names may be trademarks or service marks of others.

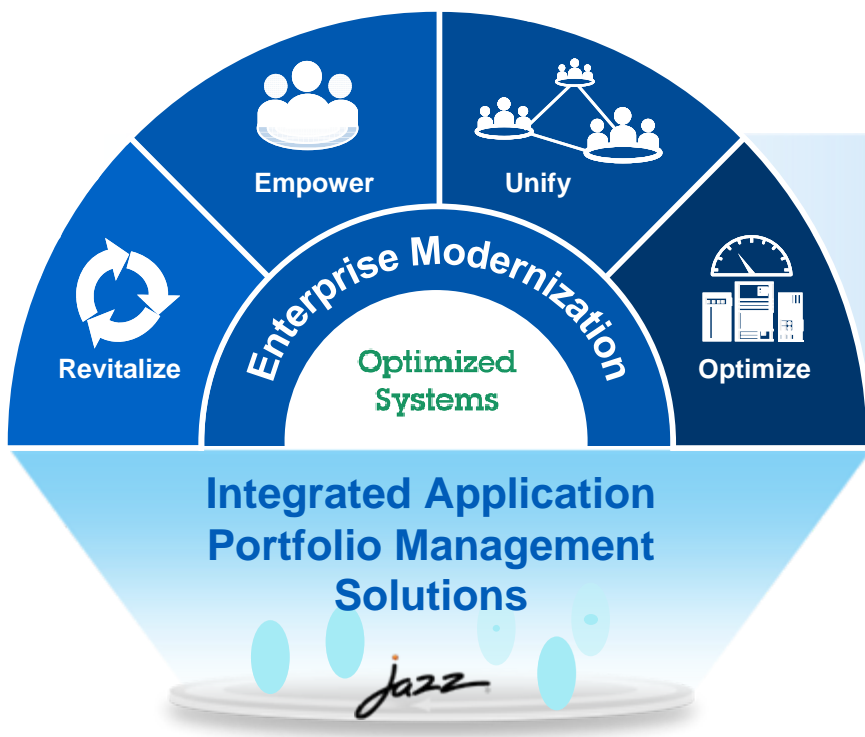
# Adopting APM: Shortest Route to Value for Smarter Computing

*Incremental adoption with incremental value delivery*



# Smarter Computing with Application Portfolio Management

*An incremental and continuous approach to achieving greater value and performance from your IT investments*



## Smarter Computing

