

VisualAge Pacbase



Administrator & Developer workbench User's Guide

Version 3.5



VisualAge Pacbase



Administrator & Developer workbench User's Guide

Version 3.5

Note

Before using this document, read the general information under “Notices” on page v.

You may consult or download the complete up-to-date collection of the VisualAge Pacbase documentation from the VisualAge Pacbase Support Center at:

<http://www.ibm.com/support/docview.wss?rs=37&uid=swg27005477>

Consult the Catalog section in the Documentation home page to make sure you have the most recent edition of this document.

Third Edition (March 2008)

This edition applies to the following licensed programs:

- VisualAge Pacbase Version 3.5

Comments on publications (including document reference number) should be sent electronically through the Support Center Web site at: <http://www.ibm.com/software/awdtools/vapacbase/support.html> or to the following postal address:

IBM France Software Laboratory, Rational Division
1, place Jean-Baptiste Clément
93881 Noisy-le-Grand, France.

When you send information to IBM, you grant IBM a nonexclusive right to use or distribute the information in any way it believes appropriate without incurring any obligation to you.

© Copyright International Business Machines Corporation 1983,2008. All rights reserved.

US Government Users Restricted Rights – Use, duplication or disclosure restricted by GSA ADP Schedule Contract with IBM Corp.

Contents

| | | | |
|---|------------|---|-----------|
| Notices | v | 'Called instances' tab | 39 |
| Trademarks | vii | User Entity | 39 |
| Chapter 1. Introduction | 1 | Input Aids | 39 |
| Workbench Client/Server Processing | 1 | Chapter 5. Workspace, Import, Timestamp, Off line mode | 41 |
| Administrator & Developer Workbench Modules | 3 | Workspace | 41 |
| Graphic architecture and browsing | 5 | Importing Instances | 42 |
| Workbench Browser - Entity Tabs | 5 | Refresh/Timestamp | 45 |
| Instance Browsers | 6 | Working in Off line Mode | 46 |
| Smartguides | 7 | Workspace Management | 47 |
| Online Help | 8 | Workspace Manager Browser | 47 |
| Chapter 2. Connecting to Administrator & Developer workbench | 11 | Workspace Resynchronization | 49 |
| Starting up a Module | 11 | Workspace Clean up | 49 |
| Connection Smartguide | 12 | Chapter 6. Sessions, Libraries, views. | 51 |
| Linguistic Version | 16 | Displaying and Changing the Work Context | 51 |
| Quick Start | 17 | Accessing Libraries. | 51 |
| Chapter 3. Prior Administration Actions | 19 | Different views on the Repository. | 54 |
| The Various Administration Levels | 19 | Chapter 7. Lists of Instances. | 57 |
| Declaring the Access Key | 21 | Chapter 8. Search and Comparison of Instances | 63 |
| Defining Generation Targets. | 23 | Searching for Instances | 63 |
| Activating the Access Key | 25 | Comparing Instances | 66 |
| Referencing VA Pac Database(s) | 26 | Chapter 9. Locking Instances | 69 |
| Creating Libraries | 26 | Chapter 10. Documentation Functions | 73 |
| Managing Security Parameters | 28 | Comments | 73 |
| Creating User Profiles. | 29 | Texts | 74 |
| Creating Users | 30 | Volumes | 75 |
| Assigning Use Rights to Users | 31 | External Files | 77 |
| Creating Optional Command Lines Set (OCLS). | 32 | Creating an External File. | 77 |
| Chapter 4. Other administration operations 35 | 35 | Attaching an External File to an Instance | 78 |
| Preferences | 35 | Input Aids | 79 |
| Parameters | 35 | Publishing | 80 |
| Sessions | 36 | Particular case: Services Modeler Entities | 81 |
| PacTransfer | 36 | Technical Documentation. | 82 |
| Support Configuration Management (SCM) | 37 | Functional Documentation | 82 |
| Customization Entities | 38 | User Documentation | 82 |
| Meta Entity | 38 | Chapter 11. Generation. | 83 |
| User Relation | 39 | | |

Chapter 12. Preferences 85

Notices

References in this publication to IBM products, programs, or services do not imply that IBM intends to make these available in all countries in which IBM operates. Any reference to an IBM product, program, or service is not intended to state or imply that only that IBM product, program, or service may be used. Subject to IBM's valid intellectual property or other legally protectable rights, any functionally equivalent product, program, or service may be used instead of the IBM product, program, or service. The evaluation and verification of operation in conjunction with other products, except those expressly designated by IBM, are the responsibility of the user.

IBM may have patents or pending patent applications covering subject matter in this document. The furnishing of this document does not give you any license to these patents. You can send license inquiries, in writing, to the IBM Director of Licensing, IBM Corporation, North Castle Drive, Armonk NY 10504-1785, U.S.A.

Licensees of this program who wish to have information about it for the purpose of enabling: (i) the exchange of information between independently created programs and other programs (including this one) and (ii) the mutual use of the information which has been exchanged, should contact IBM France Software Laboratory - Rational Division, 1 place J.B.Clément, 93881 Noisy-Le-Grand Cedex. Such information may be available, subject to appropriate terms and conditions, including in some cases, payment of a fee.

IBM may change this publication, the product described herein, or both.

Trademarks

IBM is a trademark of International Business Machines Corporation, Inc. AIX, AS/400, CICS, CICS/MVS, CICS/VSE, COBOL/2, DB2, IMS, MQSeries, OS/2, PACBASE, RACF, RS/6000, SQL/DS, TeamConnection, and VisualAge are trademarks of International Business Machines Corporation, Inc. in the United States and/or other countries.

Java and all Java-based trademarks and logos are trademarks of Sun Microsystems, Inc. in the United States and/or other countries.

Microsoft, Windows, Windows NT, and the Windows logo are trademarks of Microsoft Corporation in the United States and/or other countries.

UNIX is a registered trademark in the United States and/or other countries licensed exclusively through X/Open Company Limited.

All other company, product, and service names may be trademarks of their respective owners.

Chapter 1. Introduction

The purpose of this guide is to present the Administrator & Developer workbench, the graphical interface of VisualAge Pacbase since its 3.0 version.

You will discover another VisualAge Pacbase as its user interface has been entirely redesigned for ease of use.

For those of you who are familiar with the VisualAge Pacbase WorkStation or the character-mode VA Pac screens, this new environment will certainly change the way you used to work with VisualAge Pacbase.

If you are new to VisualAge Pacbase, we recommend you first read the 'VisualAge Pacbase Metamodel and Repository' manual where fundamental concepts are developed.

This guide is intended to provide an exhaustive documentation of the workbench but to present its structure in modules, its principles of graphic architecture and navigation, and to guide you through its generic use.

Moreover, if you are an Administrator, we strongly advise you to read the following two chapters:

- 'Prior administration actions'
This chapter presents the operations to be performed step by step in Administrator workbench, in order to have a first installation of VisualAge Pacbase that will reliably operate.
- 'Other administration operations'

The detailed documentation of Administrator & Developer workbench is available in online help. This is why you will systematically find in this guide references to the online help.

NOTE: In this guide, 'Administrator & Developer workbench' will often be shortened to 'AD workbench'. The 'Workbench' term will also be used to name an AD workbench module.

Workbench Client/Server Processing

Administrator & Developer workbench is the new workstation of VisualAge Pacbase. It constitutes the client part of VisualAge Pacbase and uses advanced techniques for the communication with both a Development Database and the Administration Database.


A site consists of an Administration Database and one or several Development Databases.

All the specifications entered in a Development Database are saved and stored in the Repository.

The Administration Database contains all data related to your site administration.

Whether you are administrator or developer, you will work in client/server mode.

NOTE: Every time your workbench communicates with a VA Pac Database,

the following icon appears:  .

Therefore, data access implies the import of instances into the local workspace of your workbench. A workspace is defined in relation to a module, a Database, a user code, and a session.

NOTE: Some entities dedicated to the administration domain are automatically imported.

Any update (modification) must be saved in the Repository in a reasonable time frame. Your workspace is used for your current daily work only.

WARNING: The deletions of instances are immediately saved in the repository (after confirmation).

Importing an instance does not lock the instance, another user can import it into his/her workspace and possibly change it.

NOTE: An explicit lock of instance is however possible (cf. 'Instances lock' chapter).

When you save an instance in the VA Pac Repository, a warning informs you if other updates have been saved for this instance since it has been imported into your workspace. In that case, you can:

- Temporarily keep your updates in your workspace, without saving them in the Repository, and contact the author of the possibly conflicting updates. This author is identified by his/her User code in the warning.
- Save your updates which may override those saved in the meantime by another user.
- Cancel your updates and recover the current server version of the instance.

The important notions of workspace and import are developed in Chapter 5: 'Workspace, import, timestamp, Off line mode'.

Administrator & Developer Workbench Modules

Administrator & Developer workbench is not a monolithic tool, it is subdivided into several modules, each including a consistent set of functions.

- Administrator workbench

Administrator workbench is the tool dedicated to VisualAge Pacbase Administrators.

- You can initialize and manage the following elements, via entity browsers. Most of these browsers are exclusively reserved for Administrators:

- Access Keys,
- Development Database(s),
- Libraries,
- Profiles,
- Users,
- PacTransfer parameters,
- Administration Documents,
- Administration External Files,
- Optional Command Lines Set (OCLS).

These characteristics concern data stored in the Administration Database (except Libraries, specific to a Database) and they are accessible via the Administrator workbench only.

- Three specific tools give access to the management of the following elements:

- Security,
- Parameters,
- Sessions.

- Another set of characteristics can be managed in Administrator workbench. They are specific to a Development Database and therefore are stored in this Database:

- Meta Entities, User Relations, and User Entities.

Also available in: Global workbench and Extensibility module

- Input Aids

Also available in: Global workbench

- Configuration Environments (SCM)

Also available in: eBusiness, Dialogue, Batch modules and Global workbench

- Documents
Available in all modules (except CFM).
- External Files
Available in all modules (except CFM).

A connection to Administrator workbench in 'Database' mode is required to have access to the Library browser and to this last set of functions. For more information on the connection to AD workbench, refer to the next chapter.

Chapters 3 and 4 in this guide are dedicated to Administrator workbench.

- Developer workbench

1. eBusiness module

The eBusiness module is dedicated to the development of eBusiness applications.

The server part to access and process data of an eBusiness application is entirely managed with the eBusiness module.

But, the client part of these applications is developed in a Java development tool such as WebSphere Studio and uses Proxies generated by 'eBusiness tools', (included in this module).

For an introduction to eBusiness development with VA Pac, we recommend to read the manual 'eBusiness and Pacbench C/S Applications: Concepts and Architectures'

This module also includes the UML Interface and Services Modeler (see also point 4.).

2. Dialogue module

The Dialogue module is dedicated to the development of online applications. You can also develop batch Programs and printed Reports.

3. Batch module

The Batch module is dedicated to the development of batch applications and printed Reports.

4. Services Modeler module

This module is a modeling tool which enables you to specify Services and generate the XML-based Description of these services in a WSDL (Web Services Description Language) file.

5. Global workbench

The Global workbench is dedicated to developers who need to specify a wide range of different entities, all accessible via only one browser.

With Global workbench, you have a direct access to all the entities of the VA Pac Repository, except those entities specific to the Administration domain.

For a complete documentation on the respective functions of all the above-mentioned modules, refer to the online help.

- CFM (Configuration File Manager)

This utility allows you to inhibit the display of unused browsers and/or to display browsers specific to Meta Entities, User Relations, User Entities, defined for a given Database. You can also organize the tabs within the modules and thus customize your modules.

NOTE: The extended online help function (with Table of Contents) cannot be customized.

Consult the VisualAge Pacbase Technical Support for further information on SCM module.

- For general information about the Meta Entity and the two other entities -- User Relation and User Entity -- all three involved in the VA Pac Metamodel extensibility, see the introduction in the 'Customization module' manual.

Graphic architecture and browsing

Workbench Browser - Entity Tabs

Each module of AD workbench opens with a browser divided into tabs. Each tab corresponds to an entity managed by the module.

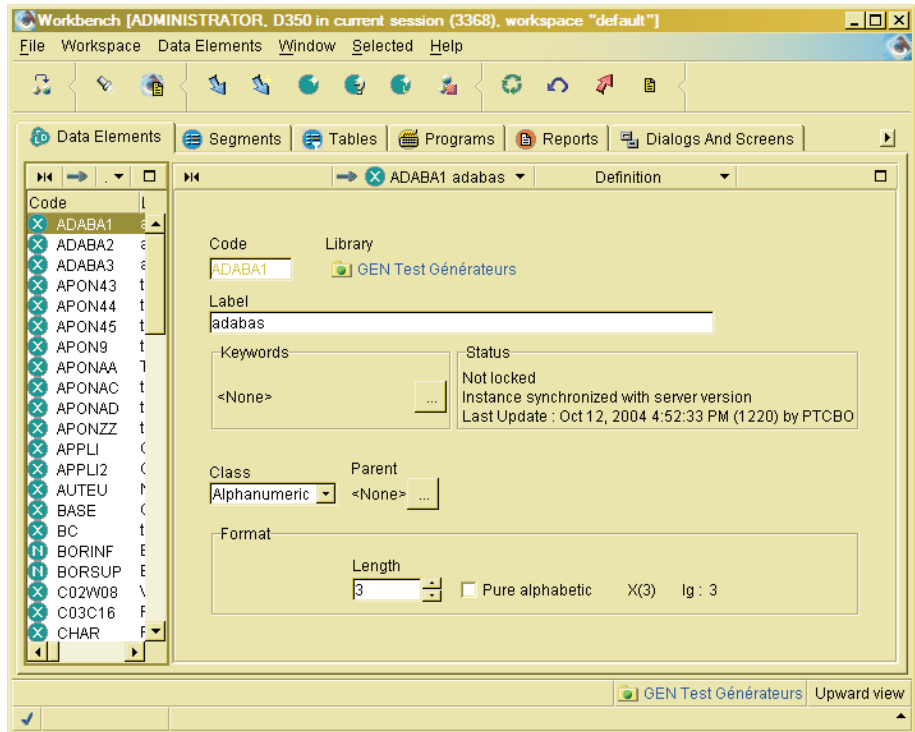
From an entity tab, you can:

- Create new instances of the entity,
- Import instances already defined in the VA Pac Repository; either in a Development Database or in the Administration Database,
- Open and edit instances of this entity, already locally created or imported into your workspace.

An entity tab displays at least two panes:

- the entity list of instances.

From a list, you have access to many functions and/or windows, documented in the 'Lists of instances' chapter.



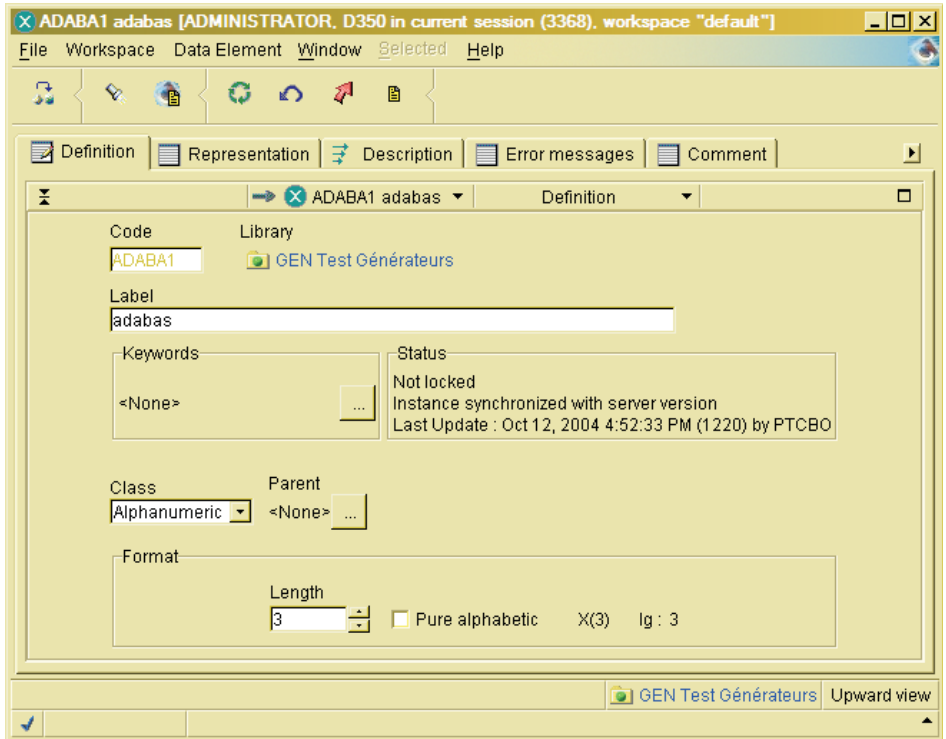
- a Definition pane which displays information on the instance selected in the list.

It is possible to create a customized module from a reference module, or also to modify the tabs display order in a module (add or hide tabs). For more details, have a look on the Read-me file delivered with the product.

Instance Browsers

To open the browser of an instance present in your workspace, click on this instance in the List pane of the entity tab, select the 'Open' choice (popup menu via mouse right click or 'Selected' menu), or simply double click on the instance line.

In general, the browser of an instance contains several tabs where you can view the Definition and the Descriptions associated with the selected entity.



The browser of an instance is referred to as first level browser. If you open a browser from a Description (Data element call for example), you open a second level browser.

Smartguides

The smartguides are dialog boxes which allow to create and modify data managed in Administrator & Developer workbench. This data is of all types, from the instance in general to a description element of the instance.

NOTE: Some descriptions can however be fullpage displayed.

Smartguides provide you with drop-down lists of predefined values to enter data, or radio buttons or check boxes to choose options...

EXAMPLE: The smartguide hereafter opens up from the Segment browser, 'SQL Accesses' tab. It is used to define an SQL access.

Smart Guide

Enter a line (SQL order)

Library
 GEN Test Générateurs

Option
 G : Generation

SQL order beginning

Type
 DECLARE CURSOR

Code

Extraction method

Part of SQL order

Beginning of order

Addition to standard generation

Part
 SQL

Content
 DC

Return
 Open the browser
 Do another creation

<<Back Next>> Finish Cancel

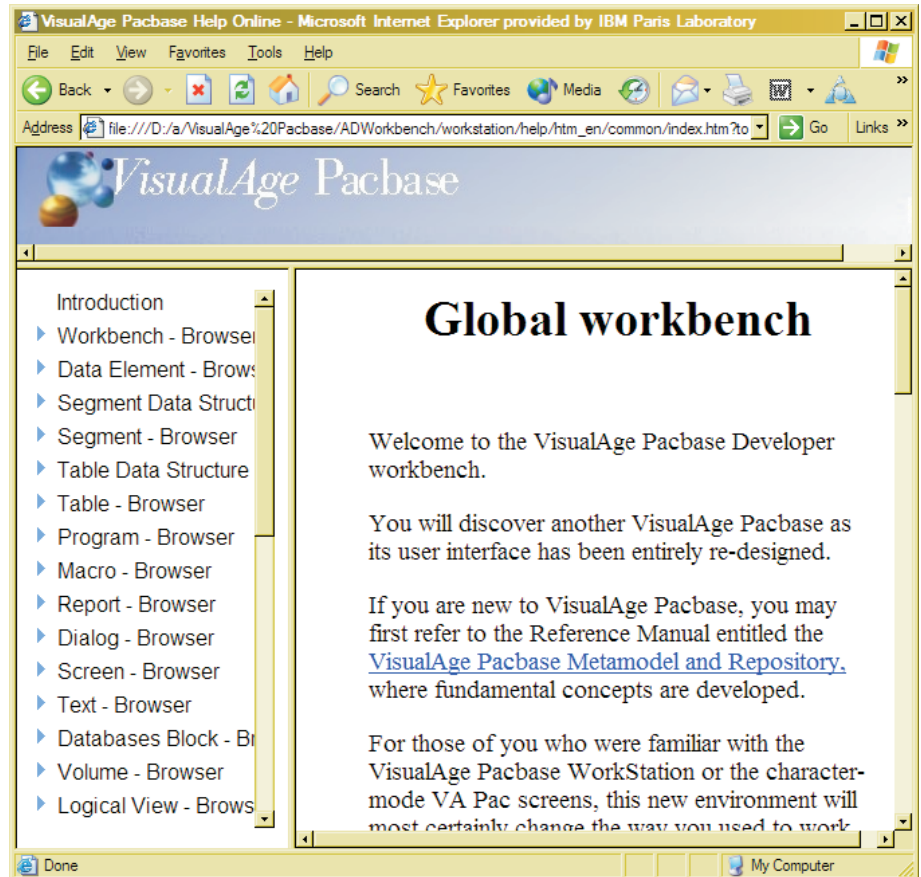
Online Help

The online help of Administrator & Developer workbench is an ordered set of html pages and so benefits from all the facilities of a navigator.

You can select a navigator different from the default one. To do so, specify your preference in 'File' / 'Preferences' / General / Online Help.

The online help appears in two forms:

- An extended online help, specific to the open module, with a Table of Contents and accessible via the 'Help' menu, 'Help Home Page' choice.

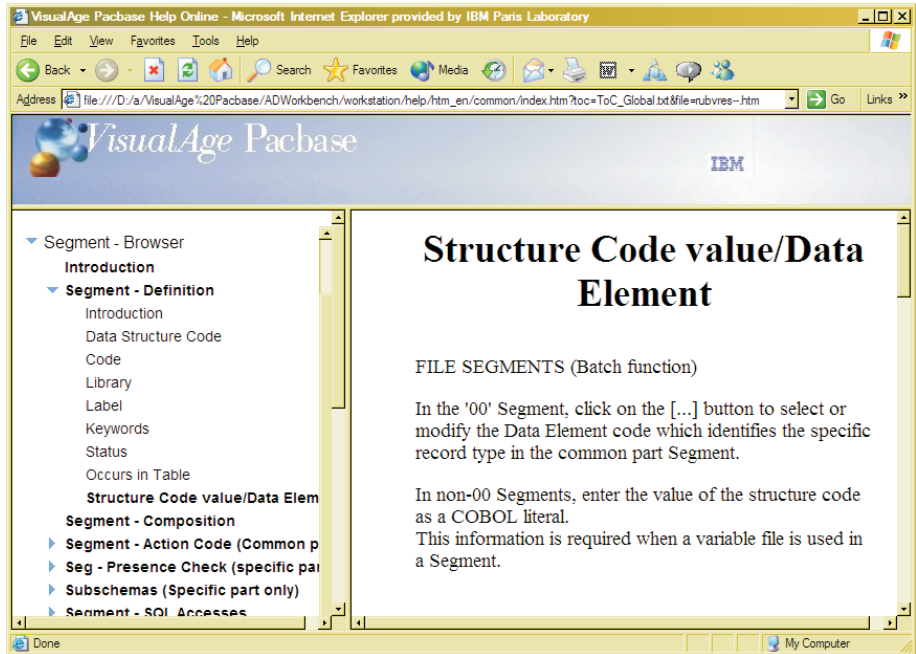


The left frame of the help displays the Table of Contents. You unfold its entries according to your current search.

The online help structure matches that of AD workbench: online help is subdivided into browser / tab / pane / panel / field (whether editable or non editable field).

The last item in the Table of Contents is named 'Utility Functions' and contains the help of general functions which are not linked to any particular entity.

- A contextual online help, accessible via the F1 function key, for each element of the interface which can gain the focus (pane, input field, button, etc.).



The [Help] button can also be used to open a contextual help page from Smartguides.

NOTE: The [Help] button does not appear in all smartguides. A 'smartguide'-type window does not gain focus (unlike each of its editable fields, from which the F1 function key is always active). To view a smartguide general help, consult the help of the graphic element from which you have opened the smartguide; this help page contains a link towards the smartguide help.

Chapter 2. Connecting to Administrator & Developer workbench

Starting up a Module

The start-up files are :

- wb_admin.bat
- wb_batch.bat
- wb_cfm.bat
- wb_dialog.bat
- wb_eBusiness.bat
- wb_global.bat
- wb_services.bat

These files are located in the Administrator & Developer workbench ("adworkbench") root directory.

You can also start an AD workbench module via the Windows desktop which includes the 'VisualAge Pacbase 3.5 Components' section in the 'Start' Menu/'Programs' choice, with the following subsections:

Administrator-Developer workbench

- Administration
- Batch
- Cfm
- Dialog
- eBusiness
- Global
- Services Modeler

Connection Smartguide

The connection smartguide - VisualAge Pacbase login - is here to help you connect to the appropriate VisualAge Pacbase Database and/or local workspace.



The screenshot shows a window titled "Bienvenue dans VisualAge Pacbase" with a close button in the top right corner. Below the title bar is a grey header with the text "Signature VisualAge Pacbase". On the left side, there is a vertical banner with the "VisualAge Pacbase" logo, a graphic of blue and gold spheres, and logos for "IBM" and "JAVA COMPATIBLE". The main area contains two sections for login information:

- Références VisualAge Pacbase:** Includes a text field for "Utilisateur" containing "PDCL", a password field for "Mot de passe" with asterisks, and a "Modifier ..." button.
- Base:** A dropdown menu currently showing "Base V364 - CICSTS2C".
- Références middleware:** Includes a text field for "Utilisateur" containing "f060336", a password field for "Mot de passe" with asterisks, and a "Modifier ..." button.

At the bottom, there are three checked checkboxes:

- Démarrer dans une nouvelle image
- Démarrer en mode connecté
- Rafraîchir les paramètres du serveur

The bottom of the window features five buttons: "<< Précédent", "Suivant >>", "Terminer", "Annuler", and "Aide".

For a detailed information on input fields, use the [Help] button in this smartguide.

When you work within your workspace only, you work in 'disconnected mode' (see Chapter 'Workspace, import, timestamp, Off line mode').

NOTE: When more than one workspace is saved on your machine, a dialog box automatically opens and prompts you to choose the workspace you wish to work in.

CONNECTION TO ADMINISTRATOR WORKBENCH

A number of administration topics are relevant at the Database level only, and one specific operation only has to be performed at site-level (Input of the first access key).

The following lists give the entities/topics available according to the selected option.

| SITE OPTION | DATABASE OPTION | ANY OF BOTH OPTIONS |
|---------------------------------|-------------------|----------------------------|
| [Input of the first Access Key] | Library | Optional Command Lines Set |
| | Meta Entity | Profile |
| | User Relation | User |
| | User Entity | PacTransfer |
| | Input Aid | Administration Document |
| | Document | Access Key |
| | Environment (SCM) | Database |
| | [Sessions] | [Security] |
| | Endevor | [Parameters] |
| | External files | Endevor |
| | External Files | External Files |
| | (Admin) | External Files (Admin) |

The Site or Database option is selected via the 'Database' field which displays the list of operating Databases. This list is set by the Bases.ini file ('common' directory), created at installation. To complete or correct this list, refer to the Installation Guide-Server and Client components, chapter 'Installation of client components', subchapter 'Editing Communication Parameters', section 'The bases.ini file'.

The Administration module-"Site" option is recommended to site-Administrators in all their administration tasks.

Access to the Administration module-"Site" option is not accounted as a Use Right seat occupancy although user authentication is obviously duly performed.

Therefore, if you are a site Administrator, you can reserve a user code, exclusively dedicated to administration operations, and to which no Use Right is assigned.

In addition to a seat thus saved, this gives Administrators increased security in their VA Pac work, under another user code, and in all other modules, the Administration module-"Base" option included.

As a matter of fact, administrating prerogatives may lead to undesired situations, such as, for instance, erroneous overrides, otherwise forbidden to all other users.

| | |
|-----------|--|
| IMPORTANT | Some prior administration operations are required in Administrator workbench in order to make a VisualAge Pacbase installation fully operational. These operations are documented in the next chapter, 'Prior administration actions'. |
|-----------|--|

CONNECTION TO DEVELOPER WORKBENCH

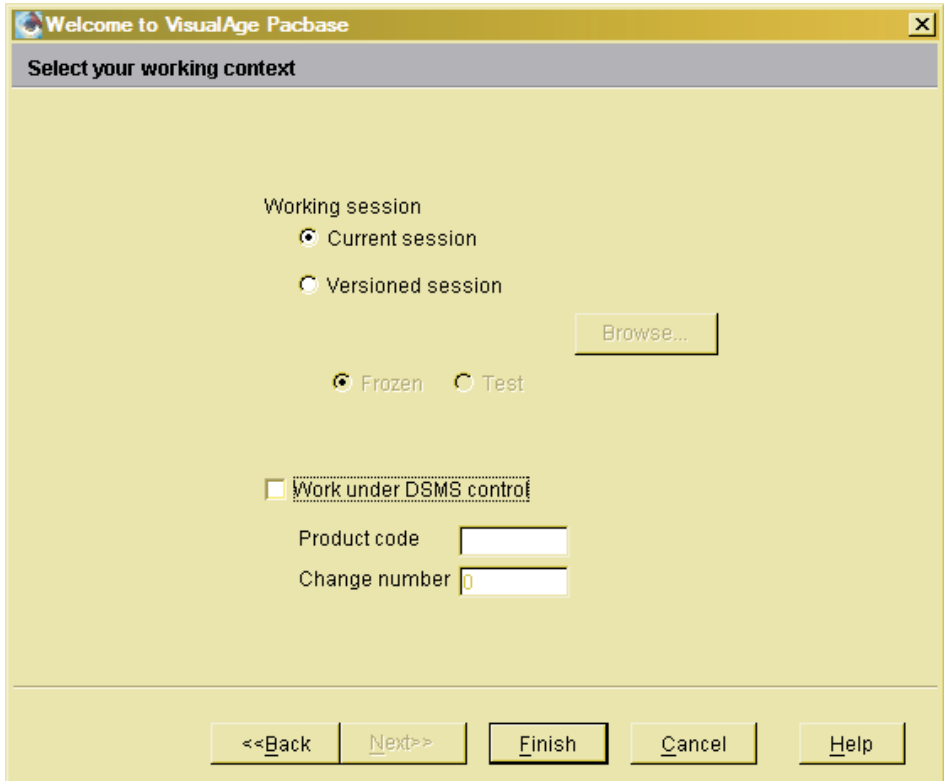
Note:

If you want to open Pacbench via Developer Workbench, you must connect to Developer Workbench in connected mode.

If the selected VA Pac Database is under DSMS control and/or if you have to work in a frozen session, you must specify a work context in order to connect to Developer workbench.

A work context is defined by a session number (current or frozen), and -- in case of DSMS control -- by a Product code and Change number, all entered in the second page of the connection smartguide.

This page automatically opens if your VA Pac Database is under DSMS control. Otherwise, you open it by pressing the [Next] button.



NOTE: This page also opens even though the connection Library is not under DSMS control (possible use context). In such case, input is needed but not validated. Then click OK.

Your work context is memorized: at your next connection, the work context fields are initialized with their last values.

Then, during your work session, if you need to change your DSMS context, select the corresponding choice in the 'File' menu. Also, to open a new session, select the corresponding choice in the same 'File' menu.


NOTE:: If the Database is under DSMS control, you must enter the Product code and the Change number ('0' (zero) is authorized for the Change number).

IMPORTANT INFORMATION ON LIBRARY ACCESS

NOTE: Because the Library notion is irrelevant with the following entities: Database, Optional Command Lines Set, Profile, User, PacTransfer,

Access Key, and Administration Document (all accessed via the Administration workbench), please disregard this section in these particular work contexts.

As opposed to the VA Pac character-mode interface or the VA Pac WorkStation, you no longer need specify a Library each time you connect to the workbench. Only when you start for the very first time a module on a given Database, the list of the Database Libraries automatically pops up to enable you to choose the initial work Library for the Workbench.

To change Libraries during your work session, click the  icon.

Each time you reconnect to this module in the same Database, the last Library selected is automatically set as your work Library.

For more information, refer to the 'Sessions, Libraries, Views' chapter.

Linguistic Version

By default, the language used in the connection smartguide is that of your machine's operating system.

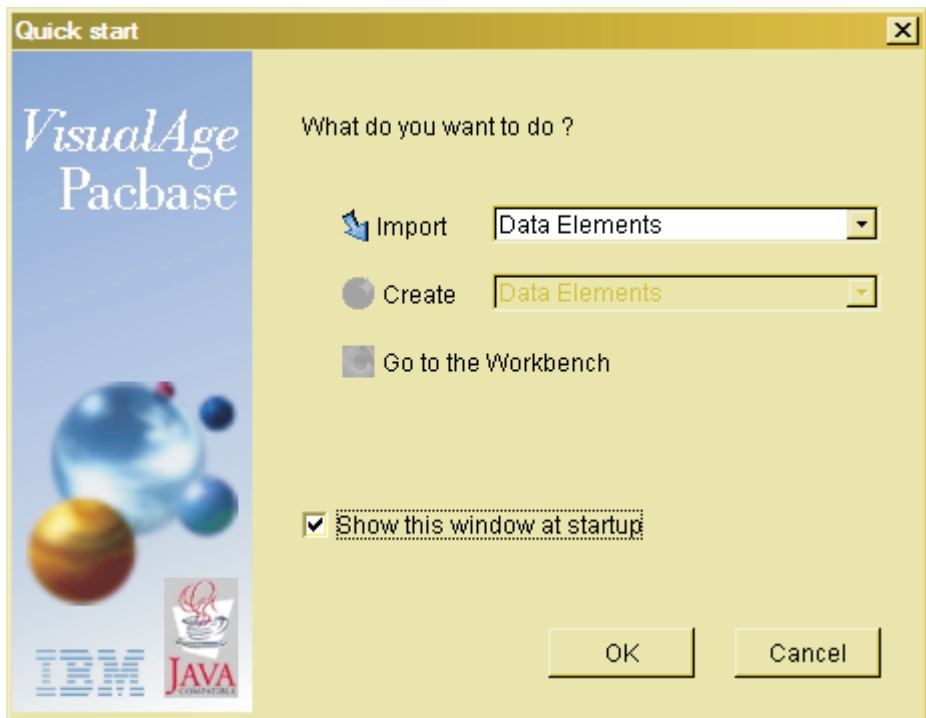
If this language is not supported by the current VisualAge Pacbase installation, it defaults to English.

This default option may be modified before the connection:

- Select the shortcut to the adequate module in the 'Start' menu, 'Programs' choice or in your desktop.
- In the popup menu, choose 'Properties'.
- In the 'Target' field/'Shortcut' tab/'Properties' window, add '-lang fr' or '-lang en' at the end of the command.
- Click OK.

Once you are connected, i.e. authenticated as a VisualAge Pacbase user with an associated working language, AD workbench will display this language.

Quick Start



By default, the Quick Start smartguide pops up once you have chosen your connection context to AD workbench. To inhibit this option, uncheck the 'Show the window at startup' box; you will directly and systematically open the Workbench.

This smartguide proposes you to import or to create instances or to go straight to the workbench. This last action is also possible by clicking the [Cancel] button.

NOTE: A great number of 'Preferences' are available and allow you to customize your Workbench. Before working in your Workbench, it may be useful to verify the default options and -- if needed -- modify them. For more information, refer to the 'Preferences' chapter.

Non Administrator readers can ignore the two following chapters, especially dedicated to Administrators.

Chapter 3. Prior Administration Actions

After the server-side installation of VisualAge Pacbase, some prior administration actions need to be performed in order to have a fully-operating VisualAge Pacbase installation.

This chapter does not document these actions in detail, but presents them giving their most relevant sequence.

The detailed documentation can be consulted in the online help of Administrator workbench.

To carry out a VisualAge Pacbase installation, an Administrator must execute the following operations, preferably in the order recommended below:

1. Declare the Access Key
2. Define the generation Targets
3. Activate the Access Key
4. Reference the VA Pac Database(s)
(install the Database(s) at Server level after this referencing)
5. Initialize Libraries
6. Manage the Security Parameters (RACF/TopSecret, rules on passwords, DSMS)
7. Create User Profiles
8. Create Users
9. Create/Assign use rights
10. Create Optional Command Lines Set

In case of key renewal, the operations 1., 2., 3., and 9 only are to be executed ; however the operation 9 can often be overlooked.

A VA Pac Administrator needs to perform many other operations; they are presented in the 'Other administration operations' chapter.

The Various Administration Levels

All administration tasks do not require the same authorization level. This level varies according to the importance of the tasks.

- SPECIFIC ADMINISTRATION AUTHORIZATIONS

These authorizations involve the following topics:

1. Parameters,
2. Optional Command Lines Sets (OCLS)
3. PacTransfer
4. SCM (Configuration environments)
5. One or more Libraries (individually identified)

This authorization allows to modify the Definition of the selected Libraries and to update instances disregarding their options on extracted lines.

Each of these authorizations is granted by the Database Administrator:

- from the User's Profile, in the 'Definition' tab and possibly in the 'SCM Authorizations' tab for Database-specific SCM authorizations (point 4. above). At this Profile level, Library-specific authorizations (point 5. above) are granted in the 'Repository Authorizations' tab only.
- and/or from the User's browser, in the 'Repository Authorizations', 'Parameters Authorizations', and 'SCM Authorizations' tabs.

The functions corresponding to the points 1., 3., and 4. above are documented in the next chapter 'Other administration operations', the OCLS management (point 2.) is presented at the end of this chapter.

- DATABASE ADMINISTRATION AUTHORIZATION

This authorization allows to manage the characteristics of a Database which include the creation/initialization of its Libraries, the management of sessions, Meta Entities and User Relations.

This authorization is granted by a Site- or Database Administrator:

- from the User's Profile, in the 'Definition' tab, 'Global Access Authorizations' panel, with the 'Administrator' value in the 'Libraries' field.

Even though this authorization is valid for all Databases/ all Libraries, it is not equivalent to a Site Administration authorization (see below for details).

A Database-specific authorization is defined in the Profile's 'Repository Authorizations' tab, the 'All Libraries' option must be selected.

- and/or from the User's browser, in the 'Repository Authorizations' tab, the 'All Libraries' option must be selected.

The Database(s) administration-related operations are documented in this chapter or in the next chapter.

- SITE ADMINISTRATION AUTHORIZATION

This authorization allows to manage the characteristics of a VA Pac site. It covers all the aspects of access authentications.

This authorization is necessarily granted by another site-Administrator in the 'Definition' tab of the User browser. It cannot be qualified at the Profile level nor in any other User browser's tab.

All the site administration-related operations are described in this chapter ('Prior administration action').

Declaring the Access Key

At all times, access to the different VisualAge Pacbase features at your site is under the control of one active Access Key (an Access Key is a sequence of 70 characters, which covers the rights you have purchased).

Also, if several VA Pac Databases are being used at your site, all Databases are necessarily controlled by the same active Key.

There may be other Access Keys: temporary test (or evaluation) Key, pending renewal Key, expired Key ; but there is only one 'active' Key at a time.

NOTE: A temporary test Key is integrated into the product ; it cannot be entered. It authorizes a restricted use of Administrator & Developer workbench (Users cannot be created, only a limited number of entity instances can be created...). No use right control is performed on this Key.

When installing VisualAge Pacbase for the first time, you must enter, online in Administrator Workbench, your site-specific Access Key, previously communicated by the VisualAge Pacbase Support.

Once the input Key is authenticated by a dedicated VA Pac server program, you will have to enter additional information to turn this Key into actual use licenses personally assigned to individual VA Pac users.

WHAT INFORMATION DOES A VA PAC ACCESS KEY CONTAIN ?

Basically, access to VisualAge Pacbase falls into two categories: the host facilities and the individual facilities.

A. HOST FACILITIES:

- The Repository and its functional extensions:
 - Extensibility
 - SCM Tools Interface
 - Additional Configuration Management: Clearcase, Endeavor
 - Pacbase Access Facility
 - Pacbase Update Facility
- The administration facilities:
 - Sub-Network Comparison
 - Rename and Move Entity

- In-Depth extractor
- Pac Impact
- PacTransfer
- Journal statistics
- The use of a security interface
 - RACF
 - Top Secret

B. INDIVIDUAL FACILITIES

Individual facilities fall into two categories: Update facility and Build facility.

NOTE: The Use Rights to individual facilities are available for the day (until midnight exactly) and are used as soon as a user connects via this facility. Use Rights are freed at the end of the day.

- Update facility allows for a read and/or write access to the VisualAge Pacbase Repository, whether in online or batch mode.

The different types of access to the Update Facility are:

- 'Designer' for the Pacdesign module in the VisualAge Pacbase WorkStation.
- 'Developer' for Administrator and Developer workbench and the Pacbench module in the VisualAge Pacbase WorkStation.
- 'Text User Interface' for VA Pac in character-mode.
- 'Reader' for consultation only. From AD workbench version 3.5 V05, it is no longer possible to assign a User or Profile any Read access. However, the Reader access which was defined before this version, are retained.

The Access Key includes the number of seats bought, for each of the above categories, as defined in the purchase agreement. The combined notions of category and seat make up the Use Right notion.

NOTE: Access to the Site Administration workbench is not submitted to use right control. However, updates are allowed to site-Administrators only.

- The Build facility allows to trigger the VA Pac generating capability. The Build facility includes two options:
 - The eBusiness Build Facility, to generate instances managed by the eBusiness and Dialog modules (including the Pacbench C/S instances).
 - The Traditional Build Facility, to generate instances managed by the Batch and Dialog modules (including instances of the following Pacbench C/S entities: C/S Screen, Client (sub)Monitor, Business Component, Server Monitor, Error Message Server).

Access to Build facility is characterized by one or more features, a feature being an indicator of the number of targeted Build environments. Such feature can be a:

- Mono-Target,
- Bi-Target,
- Multi-Target.

An embedding principle applies: a multi-target necessarily implies the purchase of a bi-target which in turn requires the purchase of a mono-target feature.

The Access Key includes the number of seats bought, for each feature, as defined in the purchase agreement. The combined notions of feature and seat make up the Use Right notion.

From version 3.5 V05 onwards, the module Administrator workbench displays the number of active Use rights available on each access key in addition to the number of Use rights which was already visible on the access keys definition. A 'How to manage access keys' guide is available in the VisualAge Pacbase Support page on the web.

Defining Generation Targets

An Access Key provides for a given number of use rights. Concerning build rights, to transform use rights into actual seats, you first have to define the build target for each feature (mono-, bi-, or multi-targets).

A multi-target enables you to declare all the possible targets ; you can define additional targets at any time, even after the key has been activated.

A traditional build target includes an operating system, a TP monitor and a database. For an eBusiness build target, you must also specify a middleware and an Object-oriented language.

WARNING: Once the Target is created, it cannot be modified or deleted. In case of an error, you must request a new key from the VisualAge Pacbase Support.

You must define the build targets from the 'Access Key' browser, 'Rights' tag, choice 'Define targets' in the 'Selected' menu of the toolbar, or from the popup menu (right-click a selected target).

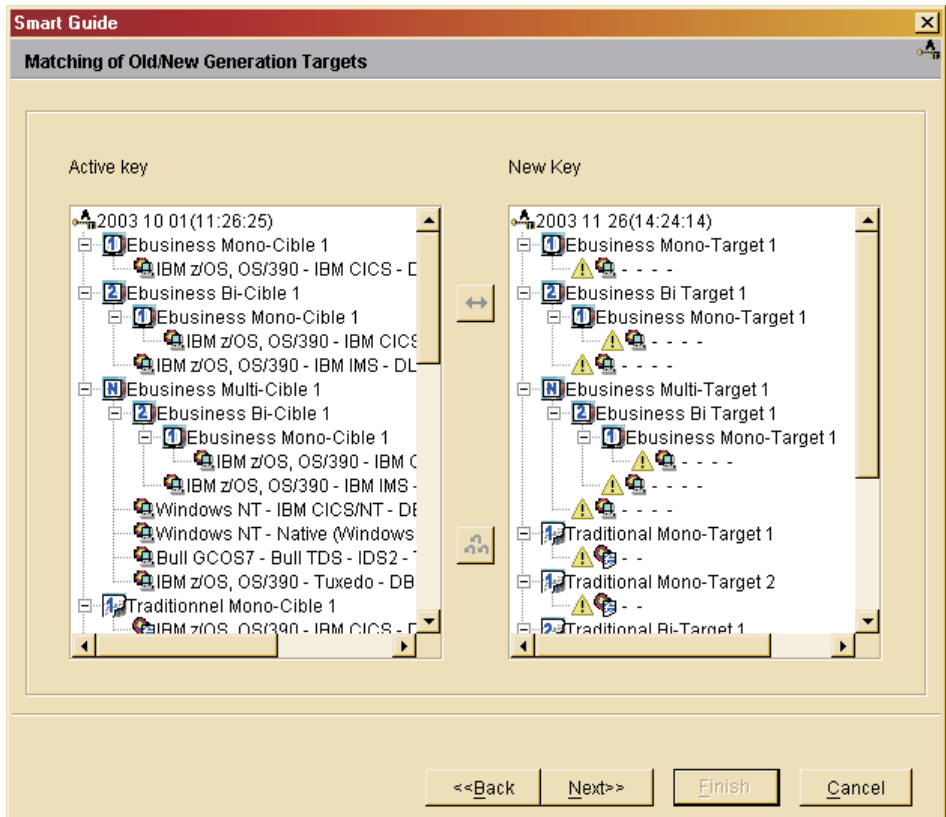
FIRST (OR TEST) ACCESS KEY

This page displays the list of features associated with the Key. You will have to define the build target for each feature (mono-, bi-, or multi-targets) expected in the Key.

KEY RENEWAL

In most cases, when a Key is renewed, the build targets remain unchanged on your site.

However, as the combinations of features (mono-, bi- or multi-targets) of the current and the renewal Key may not be strictly identical. You will have to match current features with features of the renewal Key:



For features of the renewal Key without a match in the current Key, you will have to define their respective build targets in the list of Use Rights (Use Rights tab, Access Keys browser).

A 'How to manage access keys' guide is available in the VisualAge Pacbase Support page on the web.

Activating the Access Key

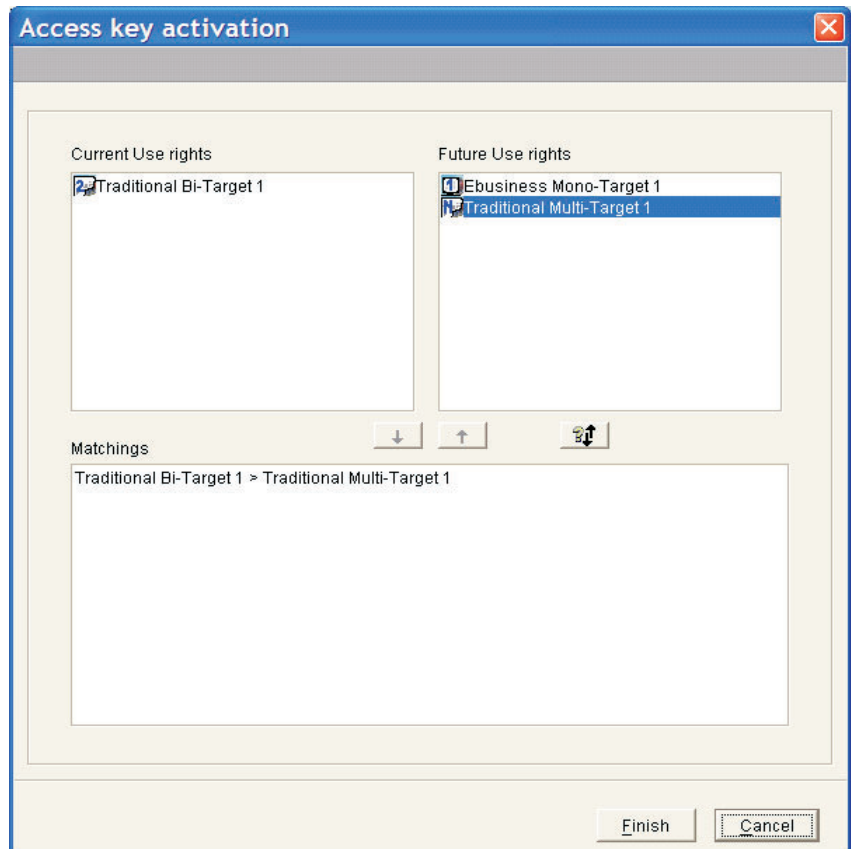
on the VisualAge Pacbase Support internet site.

To activate an Access Key, all of its build targets must be defined.

A created Access Key has to be activated in due time, to make it immediately operational.

In the Access Keys list, select the Key to be activated, then select the 'Activate this key' choice in the popup menu or 'Selected' menu.

NOTE: This choice is available for ARCHIVE Access Keys which have not reached their expiration date and whose Build targets are all defined.



In a renewal context:

- Current Update Seats are automatically renewed.

- A facility for the renewal of current Build seats is included in the Key Activation smartguide.

When both current and active Keys are strictly identical in their respective use rights combinations, implementing the new Key is as simple as two mouse clicks. As a result, all users immediately benefit from a non-disrupted VA Pac access.

However, some Use Rights may still remain unassigned (as is also the case when entering the first Access Key or a test Access Key). In this context, Used Rights are assigned AFTER the Access Key activation.

Refer to the sub-chapter titled 'Assigning Use Rights to Users'. browser or in the 'Users' browser of the workbench.

For additional information, refer to 'Assigning Use Rights to Users' subchapter.

The activation key procedure is detailed in the 'How to manage access keys' guide, which is available in the VisualAge Pacbase Support page on the web.

Referencing VA Pac Database(s)

Any development Database on-site must be defined in the administration Database. You do so via Administrator workbench ('Databases' tab) with a 'Site' mode connection.

NOTE: The BVAP test Database, which is delivered at installation is already declared in the administration Database.

To define a Database, you need to give it a logical code, a label and a transaction code. Afterwards you cannot modify the Database code. But you can change its label and/or transaction code.

IMPORTANT: Once a development Database is defined, you can install it. For details on this operation, refer to the Installation Guide/Server & Client Components, chapter 'Installation of Server Environment', subchapter 'Installation of the Development Database'.

Creating Libraries

For complete details on the Library concept, refer to the Reference Manual titled the VisualAge Pacbase Metamodel and Repository.

NOTE: Libraries management is strictly reserved to the Database(s) Administrators.

The creation of a new Library is a two-fold operation:

1. The Database Administrator first creates the Libraries network, and additional Libraries later, via a batch procedure (PACS). User input includes the Library code, and if any, the parent Library.

For complete details on the PACS procedure, consult the Administrator's Procedures Manual.

Once created via the PACS procedure, a Library is either 'virtual' or 'not initialized'.

2. Then, the Library's characteristics are defined online in the 'Definition', 'Generation' or 'Option' tabs of the Library browser.

In the 'Definition' tab, the 'Status' field can take the following values:

- Virtual (default value)

The Library was created via the PACS procedure for future development projects, giving this latter a reserved position in an existing branch of the Database Library tree.

NOTE: Libraries with this status are visible to Administrators only.

- Not initialized

The Library was created via the PACS procedure but its name and other characteristics remain to be specified. Such Libraries are not ready yet to receive development specifications.

- Initialized (this status cannot be modified)

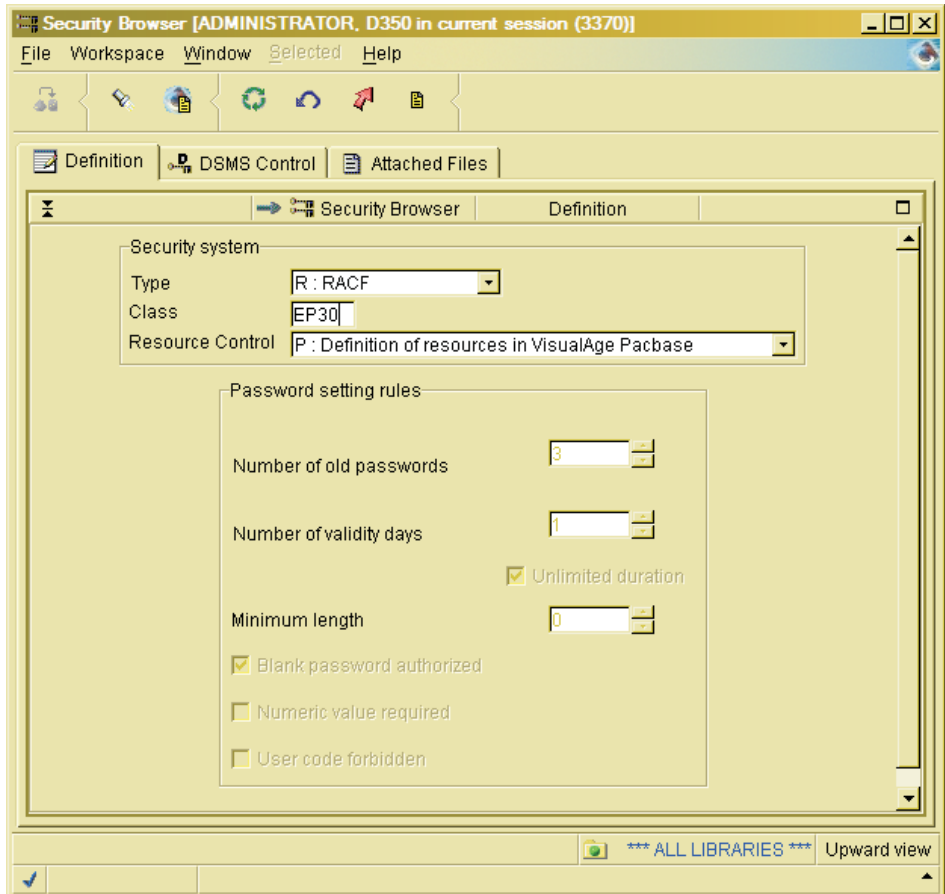
The Library's name and characteristics are complete; it can receive development specifications.

To view which entities are under DSMS control, click the '+' icon in the tool bar. Concerning DSMS, see also 'Security parameters management' below. For a complete information on DSMS, consult the 'DSMS Reference Manual'.

For the detailed documentation on the tabs of the Library's Browser, refer to the online help.

Managing Security Parameters

The security parameters are managed from the workbench browser and from each entity browser, via the 'Window' menu, 'Open Security browser...' choice:



- in the 'Definition' tab:
 - You define the type of security system to be used (RACF, TOPSECRET, or none), as well as the (resource) class in which VA Pac (logical) resources are defined. You also indicate whether the resources are defined in VA Pac, RACF or TOPSECRET.

Information on RACF and TOPSECRET implementations in the server environment is available in the 'VA Pac Installation Guide', Chapter 'Installation of Server Environment', Subchapter 'Other Installations', Section 'Security System Interface'.

- You also set the rules for password definition, only if no security system is being used.

- In the 'DSMS Control' tab, you set under the control of DSMS all the updates carried out in the VA Pac Database. When connecting to a VA Pac Database under DSMS control, users are required to enter a Change number.

For information on DSMS, consult the 'DSMS Reference Manual'.

For detailed information on the Security browser, consult the Administrator workbench's online help.

Creating User Profiles

A Profile defines a group of VA Pac users who share the same authorizations regarding Libraries, Procedures, Parameters, and Configuration Environments.

Authorizations are first defined at the global level, i.e. for all VA Pac Databases managed by the Administrator workbench and where authorizations on Libraries, Procedures, Parameters, and Configuration Environments are each considered as a whole.

These global authorizations may in turn be redefined at specific levels; in relation to selected Database(s) only.

A Database-specific authorization level is granted in order to qualify (restrict or broaden) the global authorization.

NOTE: Specific authorizations on Parameters are not Database-related. They are specific in the sense that each authorization is directly assigned in relation to one of the five parameters:

- Error labels, Text labels and Special characters (managed via the 'Window' menu, 'Open Parameter browser...' choice). See the 'Other administration operations' chapter,
- Optional command lines set (dedicated browser). See the corresponding subchapter,
- PacTransfer parameters (dedicated browser). See the 'Other administration operations' chapter.

A Profile remains a set of default values as Administrators have the possibility to modify them for any given user. For more information, see the next chapter.

For a detailed documentation on the Profile browser's tabs, consult the online help.

Creating Users

The 'User' entity (not to mistake for 'User entity' entity) allows Administrators to register and manage the VisualAge Pacbase users.

User-related information includes data such as code, name, Profile, password, use rights, access authorizations (Databases, Parameters, and Configuration Environment).

You can modify, for each User, authorizations associated with the User's Profile.

You also initialize, for each User, the generation scripts necessary to execute the Generation-Print procedure (GPRT).

The different tabs of the User browser are:

- Definition
- User details
- Rights

The management of use rights is presented in the specific subchapter 'Assigning Use Rights to Users'.

- Repository Authorizations

These authorizations are divided into two categories: authorizations on given Library(ies) and authorizations on given procedure(s).

- Parameters Authorizations:

Error labels, Text labels, and Special characters (managed via the 'Window' menu, 'Open Parameter browser...' choice). See the 'Other administration operations' chapter,

Optional command lines set (dedicated browser). See the corresponding subchapter,

PacTransfer parameters (dedicated browser). See the 'Other administration operations' chapter.

- Configuration Environment Authorizations (SCM)
See the 'Other administration operations' chapter.
- Generation scripts
See the 'Generation' chapter.
- Connections

For more details on the User browser's tabs, consult the online help.

Assigning Use Rights to Users

Defining an adequate number of seats is the Administrator's entire responsibility, knowing that no quantitative control is performed during this operation.

On the other hand, each time a User signs on, its access is dynamically controlled: the number of active Update and Build Rights cannot exceed the number of seats purchased.

Also, a build authentication is performed for each generation request.

CAUTION: Update and Build licenses become active the first time their owner signs on, and remain active for the rest of the day (until midnight exactly), even if, in the meantime, this user disconnects and reconnects one or more times.

The number of active seats at a given moment therefore corresponds to the number of users who so far have requested an online connection, plus all permanent rights since they are considered as always active.

Permanent rights are rights which are assigned to some users on a permanent basis. These users then benefit from a non-disrupted access to VisualAge Pacbase.

Caution: you can no longer assign a Right access to a User or Profile from AD workbench version 3.5 V05, but a Read access is retained if it was defined before this version; and in that case, it is displayed in the list of Users or Profiles.

Save for seats automatically renewed from the current seats (see 'Key activation' subchapter), Use Rights may be assigned from:

- the Use Rights List (Access Key browser)

A quick assignment tool allows you to rapidly assign a Use Right to several selected users.

The opposite operation is also possible; you can withdraw a Use Right to several users at once.

- the Users List ('Users' tab)

From this list, you assign Use Rights to individually selected Users.

Also, from the Users List, Use Rights can be transferred from one user to another. This dynamic management of Use Rights brings the Administrators the flexibility necessary to adjust to varying staffing conditions.

- the UKD0 batch procedure.
- the UKD1 batch procedure.

For explanations, refer to the Administrator's Procedures manual.

Creating Optional Command Lines Set (OCLS)

The Generation-Print (GPRT) procedure may include in its generated job stream the command lines that are necessary for subsequent processing such as program assembly, compilation or link-edit.

A job stream is made up of all the generated source for a given entity type, requested by a given user, at a given session and from a given Library.

Optional Command Lines Sets (OCLS) may be used:

- To control the whole GPRT job stream execution, inserted BEFORE or AFTER the generated job stream.
- In relation to one generated instance, inserted just BEFORE or immediately AFTER its generated source.

Each of these four use contexts identifies a specific option type for an OCLS instance.

IMPLEMENTATION AS GENERATION STANDARDS

VisualAge Pacbase enables you to define OCLS instances adapted to your site's needs and make them available to all developers.

OCLS instances may be defined at two different levels:

- Site level: When defining a new OCLS instance, select 'All Databases' in the creation smartguide.

The OCLS will be available in all Libraries of all Databases at your site.

- Database level: When defining a new OCLS instance, select a Database in the creation smartguide (not available when connected with the 'Site' option).

The OCLS will be available in all the Libraries of this Database.

To manage OCLS, you need the corresponding authorizations, granted by an Administrator, in your Profile browser and/or in your User's browser.

USE OF OCLS

Defined OCLS instances may be set as defaults specifically to given Libraries (Library Generation tab, Optional Command Lines Set panel).

NOTE: These defaults apply to the GPRT Job Stream and/or to the Program entity only.

Developers choose or change the default OCLS (see lines above) for the instance to generate either:

- at the instance level,
- or by directly including it in the current Generation request. See also the 'Generation' chapter.

NOTE: Command lines defined/called at one level do not come as a complement to those defined at a lesser priority level ; they entirely replace them.

For a detailed documentation on the Optional Command Lines Set browser, consult the online help.

Chapter 4. Other administration operations

This chapter briefly presents the optional administration actions which may be performed from Administrator workbench.

For a detailed information on the implementation of the functions described in this chapter, consult the online help.

Preferences

You can manage the preferences: modify a preference on one or all the Databases, create a preference on a Database, impose a value for a preference...

In Administrator workbench, select the 'Databases' tab, Double-click on the '*** All Databases' line and then select the 'Preferences' tab. The list of all the preferences is then displayed.

To impose the value of a preference to all users, select a preference in the list and select 'Administrator' in the 'Required level' field and change the current value of the preference in the 'Current Value' field.

The management of preferences is explained in detail in Administration workbench online help, in the workbench tools.

Parameters

These parameters are:

- The Special Characters for keywords management,
- Customization of the Error labels fixed part,
- Text labels.

To manage these parameters, you need the corresponding authorization, granted by an Administrator, in your Profile browser and/or your User's browser.

These parameters are managed via the 'Window' menu, 'Open Parameter browser...' choice.

Sessions

You manage sessions via the 'File' menu, 'Manage sessions...' choice. This function is also available in all the modules of Developer workbench.

NOTE: To manage sessions, the 'Database administrator' authorization at least is required.

Managing sessions enables you to manage more than one version of an application. You can choose to manage sessions or to freeze the current session by checking the corresponding box and by selecting the [Next] button which is then available. You can also check both boxes. In this case, the list of the frozen sessions of the Database will be displayed first, and if you select the [Next] button again, you will be able to launch the freezing of the current session.

PacTransfer

The purpose of PacTransfer is to provide an easy versioning of the developments made in a VisualAge Pacbase Database; it automates transfers of update transactions between two sessions or more.

PacTransfer scans the VA Pac archived Journal file and reads the Administration Database. This Database stores transfer parameters which control the transactions.

The transfer parameters define one or more source environments. Each can correspond to one or more target environments.

PacTransfer selects, from the archived Journal file, transactions that match the criteria defined via these transfer parameters.

It then generates update transactions for the target environment(s) also defined with these same transfer parameters.

These transactions are used by the VA Pac batch update procedure (UPDT). If the VA Pac Database is under DSMS control, such updates are automatically included in this control.

PacTransfer processing is thus based on transfer parameters defined by the user in Administrator workbench.

These parameters are: sessions numbers, Libraries, Change numbers and User codes.

They must be created and defined prior to any PacTransfer operation.

For more details on PacTransfer procedures, see the 'Administrator's Batch Procedures' manual.

The PacTransfer function is driven from the tab of the same name, in Administrator workbench.

To update PacTransfer tabs, a User must at least have the corresponding authorization, granted by an Administrator in the corresponding Profile browser and/or in the concerned User browser.

Support Configuration Management (SCM)

Batch, Dialog and eBusiness applications are built with generated instances of several entity types.

These instances are stored in the Database in the form of logical source programs. These source programs are handled by developers.

The generation of an instance (i.e. the production of an executable module) can be performed at various steps of its life cycle: development, test, system acceptance, production turnover, maintenance (bug corrections or enhancements).

At each step, the instance is generated in a different physical environment. The various physical environments are differentiated by their physical implementations (test or operations system library) and are managed by different activities (design, operations, ...).

In the 'Configuration Environment' tab, you define a logical environment.

Then when you execute the batch generation procedure (GPRT) or one of the SCM module (SUPPORT CONFIGURATION MANAGEMENT Tools Interface) procedures, you will pilot the procedure output by indicating the appropriate environment.

The parameters specified in the configuration environment define the physical target of the generation or production turnover or simulation.

For more information about batch procedures, refer to 'The Developer's Procedures' Manual for the GPRT procedure, and to 'The Administrator's Procedures' Manual for the SCM procedures.

SCM is driven from the 'Configuration Environments' tab, also available in the eBusiness, Dialog, Batch modules and Global workbench.

To update SCM tabs, a user must have at least the corresponding authorization, granted by an Administrator in the corresponding Profile browser and/or in the concerned User browser.

Customization Entities

VisualAge Pacbase manages standard entities, such as Data Element or Segment, which represent specific concepts in an application life cycle. They constitute the core of the VisualAge Pacbase Metamodel.

You can customize this Metamodel by creating new entities to meet your own specific business needs.

VisualAge Pacbase enables you to:

- Define your own entities,
- Customize their descriptions,
- Define the relations needed between these entities and any other entities.

You customize the VA Pac Metamodel via three entities: Meta Entity, User Relation, managed via dedicated browsers, and User Entity, integrated in the Meta Entity browser.

These entities are also available in Global workbench.

NOTE: A Database Administrator authorization at least is needed for the Meta Entity and User Relation browsers. The User Entity browser is accessible by any User with an Update authorization on the concerned Library.

The next three sections give a brief functional presentation of these entities.

For a detailed information about the corresponding tabs, consult the online help.

Meta Entity

NOTE: the 'Meta Entity' entity was referred to as 'User Entity' in the versions prior to the 3.0 Version.

The Meta entity (ME) enables you to:

- Define a new concept,
- Customize the description of this concept by listing its characteristics that are defined in the Repository by instances of the Data Element entity.

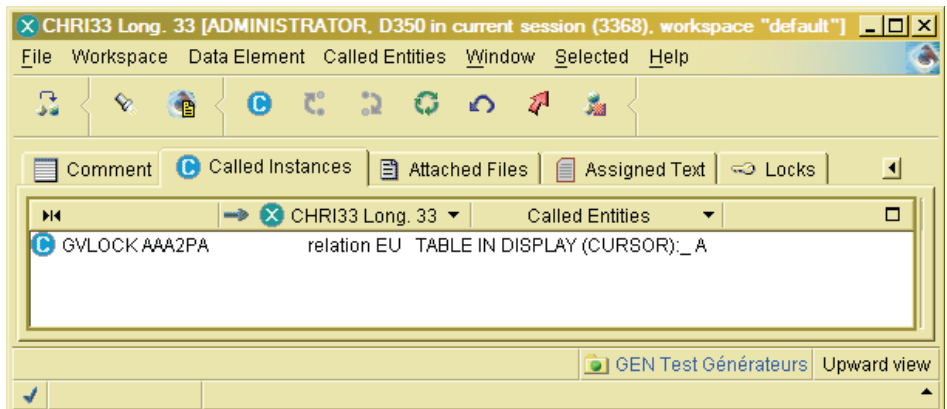
User Relation

The User Relation entity (UR) enables you to create links between two entities (standard entity or Meta Entity). The cross-reference will be automatically managed. A User Relation is characterized by the target entity of the relation.

'Called instances' tab

To create a link between an instance A and an instance B via a User Relation, use the 'Called Instances' tab in the browser of instance A.

Choose the appropriate User Relation, and then specify the code of the instance B.



User Entity

User Entities are instances of a given Meta Entity.

NOTE: The name "User Entity" in VA Pac versions earlier than 3.0 was "User Entity Occurrence".

A User Entity's Definition and Descriptions tabs entirely depend on the --user-defined -- Descriptions of the corresponding Meta Entity.

If you need information on how or what to enter in any of these tabs' fields, consult the Meta Entity designer (usually, the VA Pac Administrator or the Project Manager).

Input Aids

For information on Input Aids, refer to the 'Documentation functions' chapter.

It must be mentioned here as the Input Aids browser is present in Administrator workbench.

NOTE: No specific authorization is needed to specify Input Aids instances.

Chapter 5. Workspace, Import, Timestamp, Off line mode

Workspace

WORKSPACE DEFINITION

A workspace is defined for one module, Database, User, and session.

It contains all the instances imported from the VA Pac Repository and all the instances you have created.

The workspace is therefore the local image of your current work on VA Pac instances.

IMPORTANT RECOMMENDATION

A workspace must NOT be considered as a persistent resource to be kept permanently.

It should only contain your day's work pile which must be systematically uploaded to the VA Pac Repository.

The Repository is the only secured and shared storage place for the VA Pac instances.

This is why, for instance, working on a long-lasting workspace would only increase the risk of update conflicts with other users.

However, you may save your current workspace ('File' menu, 'Save workspace locally' choice), in particular when closing the workbench: your instances will be stored locally with your latest updates (whether uploaded or not in the Repository).

NOTE: In 'File' / 'Preferences' / 'Workspace', the 'Save workspace locally when closing application' option is a default option.

You can even save an already saved workspace under another name ('File' menu, 'Save workspace locally as...' choice). As a result, you can manage several workspaces for one [module-Database-User-session].

You can set your own preferences regarding your workspace ('File' menu, 'Preferences' choice, 'Workspace' panel).

NOTE: The preferences common to all modules apply to all the workspaces of all modules.

Module-specific preferences apply to all the workspaces of each given module.

Importing Instances

To work on any instance, whichever the entity, it must exist in your workspace. So you must import the wanted instance(s) from their storage place, the VisualAge Pacbase Repository.

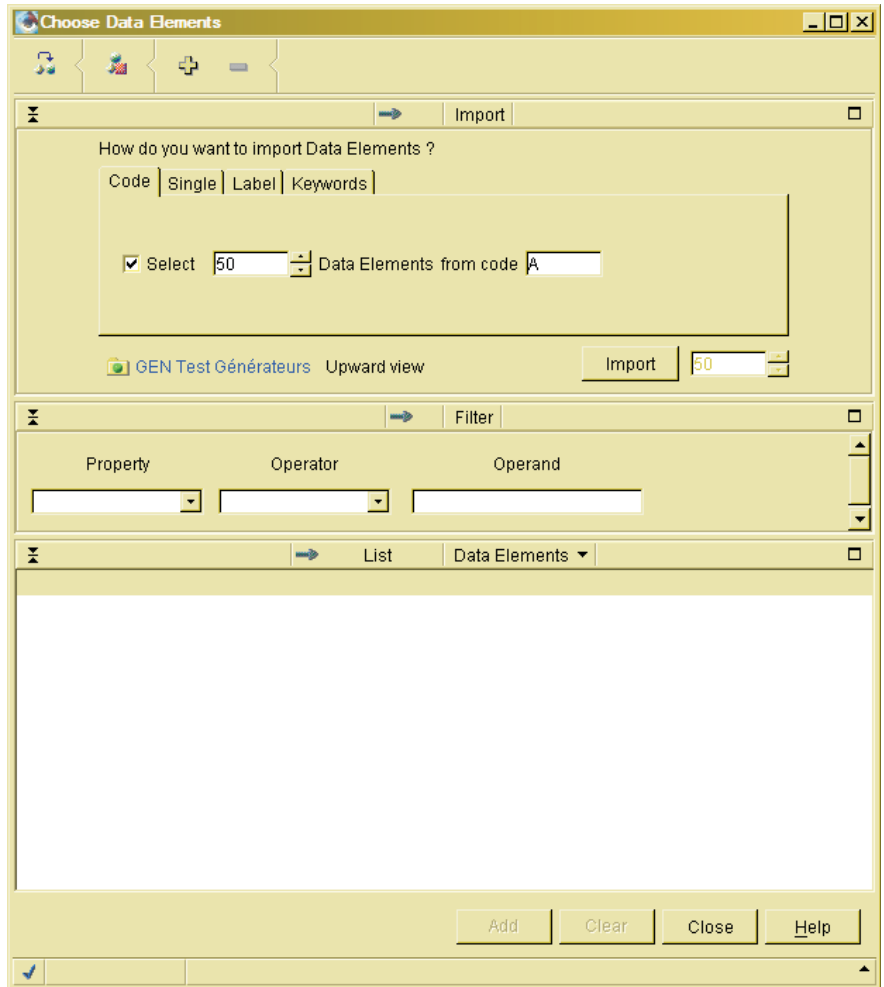
The import utility imports all the instances which match your import criteria, but also the instances called by the imported instances, if they do not already exist in your workspace.

At first, Definitions only are imported (to minimize the import size); the entire instance folder is imported when the instance opens up.

The branch of the subnetwork explored during the import is the one currently selected for the display of the entity instances in the workbench.

You can import instances in two different ways:

- Import instances from the Repository into your current workspace, via the import window which you open from:
 - the Quickstart window. In this case, you select the entity whose instances are to be imported.
 - any Workbench list. You import instances, of the entity whose tab is displayed, by clicking the import icon (blue down-arrow), in the toolbar or the 'Import' choice in the popup or 'Selected' menu, or the menu whose name displays the '[Entity_name]' menu in the menu bar.



You choose between several possible import types:

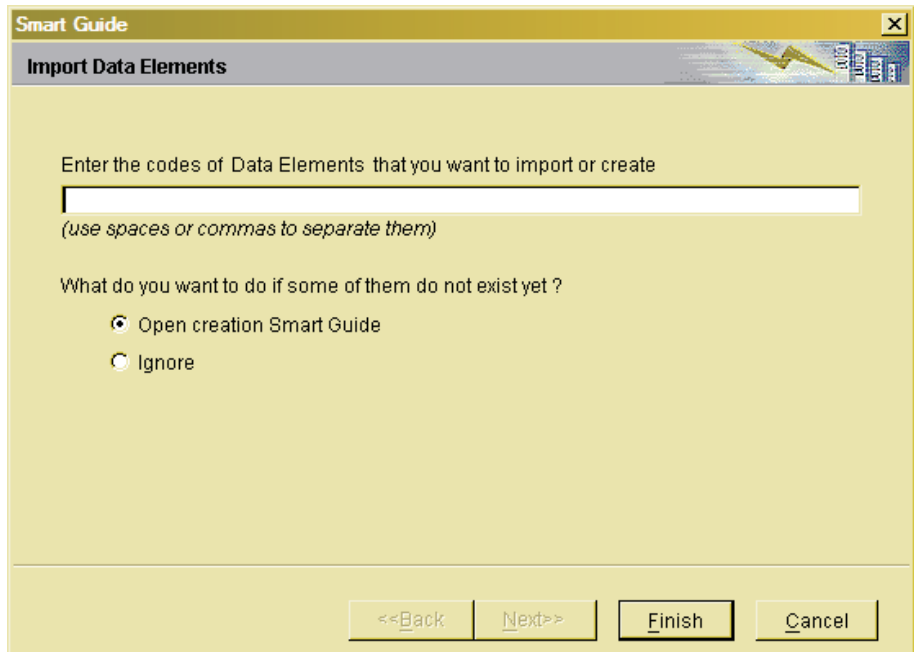
- instances import, 'from ...' an instance code.
- single import, to import instances one by one. In that case, the code is required.
- instances import, 'from ...' an instance label.
- instances import by keywords.
- instances import by external names (available with Programs, Database Blocks and Dialogs/Screens).

Click on the [Import] button: the list of the instances concerned by your import request is displayed in the bottom pane of the smartguide.

This function allows you to visualize lists of instances defined in the Repository.

Select in this list the instances you want to import and click the [Add] button.

- Import instances from the Repository and create new instances if the instances you indicate do not exist in the Repository. You open this smartguide from a list of instances by clicking on the import icon (blue down-arrow, with bright point) or by selecting the 'Import/Create by code' choice from the popup or 'Selected' menu, or from the '[Entity_name]' menu in the menu bar.



You choose to import/create instances if you already know the codes of these instances.

If you have entered existing codes, the instances are added to the workbench list.

If the codes you have entered do not exist, you can:

- either ignore them,
- or create the instances via the creation smartguide which opens up.

Click [Finish] to start the import.

For a detailed documentation about the import utility and import criteria, consult the online help.

Instances are not locked on the server when you import them. However, when you save your updates, a timestamp is assigned to check whether this instance has been updated by another user since your import.

In such case, a warning is displayed and you must then decide whether or not to save your updates (and thus overwrite the updates made by other users).

Refresh/Timestamp

When first imported, the instances of an entity are all declared as synchronized with the server version in the Status field of the Definition tab.

A first timestamp check is automatically launched if you have checked the 'Enable timestamp check' option and specified a 'time interval' between each timestamp check in the 'Preferences' menu and if your working Library is the same as the Definition Library of the selected instance.

These two requirements being met, the timestamp check is launched:

- when opening the instance browser if your working Library is the same as the instance Definition Library.
- when locking the instance.
- when updating the instance for the first time: either the instance Definition, when the browser has never been opened, or any description of the instance after the opening of its browser if the time interval set for the timestamp check has been exceeded.

If the selected instance has been modified on the server after its import into your local workspace, a dialog box immediately opens and displays a message.

This message informs you that the instance is now conflicting with its server version and displays the code of the user who performed the last modification. You can then:

1. 'Refresh' the instance and retrieve its server value.

You click on the [OK] button which opens another dialog box. The message displayed asks you whether you want or do not want to 'discard the changes on the selected instance'.

- you then either discard your local updates and retrieve the instance server value ([OK] button),
- or keep your updates while retrieving the server value at the same time ([Cancel] button).

2. Cancel the 'Refresh' by clicking the [Cancel] button.

The next timestamp check following the first one will be launched if you have made new local updates after a server Refresh and if these updates have been performed beyond the time interval set in the 'Preferences' menu.

Working in Off line Mode

Working in off-line mode is useful when:

- A network/gateway/host breakdown occurs,
- No host can be accessed (if you are working on a laptop or out of your office).

When you work in off-line mode, you can create, delete instances and, modify any instance existing in your workspace. But any action that requires a host access is unavailable.

Note: to be able to open PacBench from Developer Workbench, you must start Developer Workbench in a host access mode.

Before closing your workbench, make sure you save your workspace. You will upload your updates at your next connection to the host.

It is therefore recommended to let the default preference 'Save workspace locally when closing application' (in 'File' / 'Preferences' / 'Workspace') selected.

You can work in off-line mode in several ways:

- Systematically start in off-line mode
Deactivate the default option 'Start application in connected mode' in 'File' / 'Preferences' / 'Workspace' / 'Off Line'.
- Exceptional start in off-line mode
In the connection smartguide, uncheck the default option 'Start application in connected mode'.
- Switch from connected to off-line mode
In the 'File' menu, select the 'Disconnect' choice.
The 'Reconnect' choice will immediately restore your connection.

NOTE: In 'File' / 'Preferences' / 'Workspace' / 'Off Line', the 'Save when closing creation SmartGuides' preference ensures that for every creation smartguides closing, the instance is immediately saved in the VA Pac Repository. This option is automatically inhibited when the work session is in off-line mode.

Workspace Management

Workspace Manager Browser

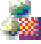
Workspace Manager gives you an overall view of your workspace.

To access the Workspace Manager, in the 'Window' menu, select the 'Workspace Manager' choice.

This window displays four tabs, described below.


'LOCAL UPDATES' TAB

This tab displays the list of the instances locally modified in your current workspace.


Note: You can click on the  tool icon to view the Definition details of the listed instances. You can select the columns to be displayed, via the 'Select columns' choice which is included in the contextual menu when the details are displayed. You can also modify the columns order (Drag/Drop) and adjust their width. These 'adjustments' are memorized and you will find again this display format for this list the next time you will connect.


In this tab, you can:

- Recompute the list

To refresh this list, click the 'Recompute list' choice in the popup menu or the 'Updated Entities' menu in the menu bar, or else click the  toolbar icon.

- Save all


To save all your updates on the server, click the 'Save all' choice in the popup menu or the 'Updated Entities' menu in the menu bar, or else click the  toolbar icon. The instances saved are suppressed from the list.

If you perform a 'Save all' on a selected instance, the  icon which was present opposite the instance name in the list disappears but the instance saved remains displayed in the list.


The instances Definitions are saved first, before the descriptions. This prevents existence conflicts between instances (e.g. for a Program after a duplication). This operation is then recommended when you want to save many updates which involve numerous dependencies.

- Refresh all

You may wish to retrieve the current server version of instances already imported on local.

To do so, select the 'Refresh all' choice in the popup menu or the 'Updated Entities' menu in the menu bar, or else click the  toolbar icon. Local changes are then discarded.

- Discard all changes

If changes made are actually not to be saved, select the 'Discard all changes' choice in the popup menu or the 'Updated Entities' menu in the menu bar, or else click the  toolbar icon.


You then recover the server version which was last imported.

'ALL PROBLEMS' TAB

This tab displays the list of instances on which errors have been detected while being updated on your workspace.

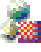
Whenever an error is detected on an entity's instance, a red cross is displayed on the bottom left of your window. This cross also appears in the list displayed here, in front of the entity's instance bearing the error.

You may wish to retrieve the current server version of the instances you have imported and modified locally.

To do this, click the 'Refresh' choice in the popup menu or in the "Invalid entities" menu of the menu bar, or else click the  icon in the tool bar.

When you click on an entity's instance in the list, the label of the error detected is displayed on the bottom of the pane.

If you double click on this instance, you open the entity's browser.

Note: Click on the  tool icon to view the details of the listed instances: error messages, storage library... You can select the columns to be displayed, via the 'Select columns' choice which is included in the contextual menu when the details are displayed. You can also modify the columns order (Drag/Drop) and adjust their width. These 'adjustments' are memorized and you will find again this display format for this list the next time you will connect.

'LIBRARIES' TAB

This tab displays the list of all instances present in your workspace in an ordering by Library.

NOTE: In the Administrator workbench, the Libraries tab is inactive if you are connected in a Site-Administration mode.

The Libraries list is automatically updated in your workspace each time you connect to the VA Pac Repository.

During a work session, changes can be made on the Database Library structure, Library names, etc.

To display the updated list, click on the 'Refresh Libraries tree' choice in the 'Workspace' menu, it should reflect any update in your library access authorizations.

'LOG' TAB

This tab keeps track of all the communications exchanged between your workspace and the server.

It displays brief messages which report the actions performed and changes made in your current workspace. It also locates errors and thus provides an interesting source for debugging in case of server error.

Workspace Resynchronization

You can, at any moment, resynchronize your workspace to refresh the local instances with their current version from the Repository. To do so, select the 'Resynchronize the workspace' choice in the 'Workspace' menu.

This choice is also available via the 'Resynchronize workspace at startup' option in 'File' / 'Preferences' / 'Workspace' / 'Off Line', but in this case, resynchronization is effective each time you open the workbench..

If you select this option, make always sure you save your updates in the Repository, otherwise they would be lost the next time you will open the workbench.

Workspace Clean up

You can remove the entities you no longer need from your workspace.

To do so, select the 'Workspace Clean Up' option in the 'Workspace' menu

You can select the instances to keep. These instances will not be cleaned up, as well as all their referenced instances (lines which are called depending).

EXAMPLE: If you exclude a Segment from the clean up, the Data Elements it calls will automatically be kept in your workspace.

Chapter 6. Sessions, Libraries, views

Displaying and Changing the Work Context

The connected user name, the VA Pac Database code, and the session are systematically displayed between brackets in the title bar of all workbench windows.

NOTE: The workspace name is also displayed (in quotation marks) if you work in a workspace already saved, and therefore named.

If you are connected to Administrator workbench in 'Site' mode, the user name only and possibly the workspace name are displayed.

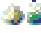
If the Database is under DSMS control, you can view and/or modify the DSMS Product code and Change number via the 'File' menu, 'Change DSMS Context' choice.

To change the session number (and the DSMS context), in the 'File' menu, select the 'Open a new session...' choice. This operation directly opens a new Workbench. The initial Workbench remains open.

NOTE: If you just want to compare an instance already open with its version in another session, it is not useful to open another session. The workbench contains a compare/assign utility. For additional information, refer the 'Search and comparison of instances' chapter.

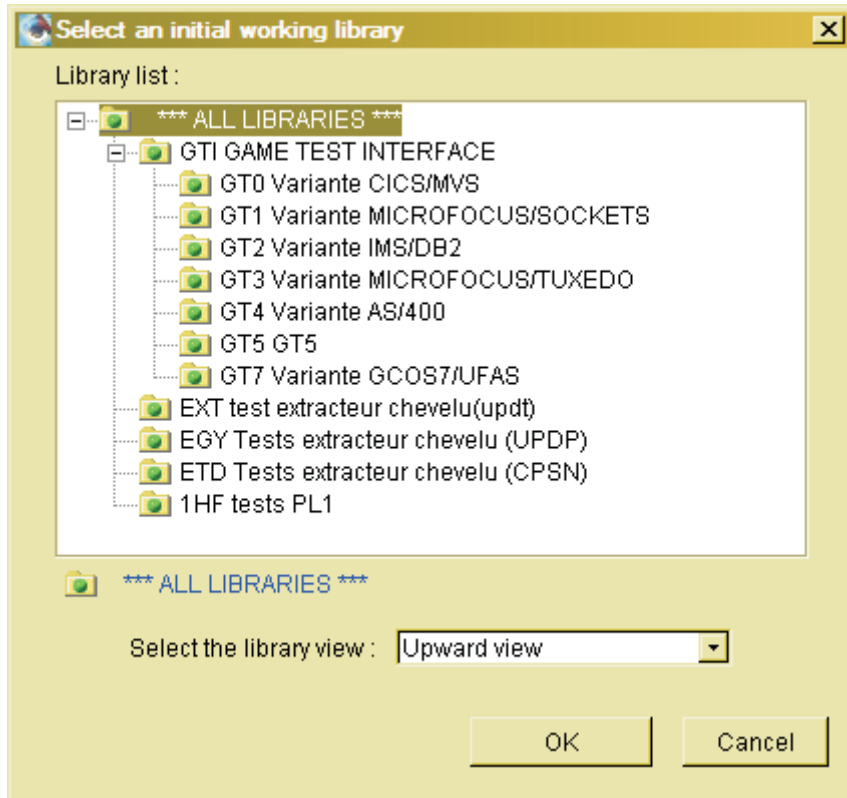
To change the user code and/or Database code, you must restart the wanted module to open a new workbench.

Accessing Libraries

To change the work Library, open the Libraries list by clicking on the  icon in the bar located under each instances list.

CAUTION: This change will be applied to all tabs of the given browser.

GRAPHICAL APPEARANCE OF THE LIBRARIES LIST



The Libraries list is presented as a tree. Its branches show the hierarchical relations between the Libraries defined in the VA Pac Database.

To display dependent Libraries, click on the '+' button which is located just before the Library icon. The Libraries dependent on this Library are displayed.

Click on the '-' button to fold the list back up.

If you find neither the '+' nor the '-' sign before a Library icon, it means that this Library has no dependent Library.

LIST CONTENTS

The contents of the list depend on your current work context. In an instance browser, as no operation is possible in Libraries higher than the Library where the instance is defined, these Libraries are not listed.

Otherwise, the Libraries list is automatically updated on your workspace each time you connect to the VA Pac Repository.

During a work session, the Database Library structure, Library names, ... may be modified.

To display the updated list, click on the 'Refresh Libraries tree' choice in the 'Workspace' menu, it should reflect any update in your library access authorizations.

The list displays the name of libraries with different access levels authorized for the user:

. for read-only access libraries

or . for read-only access libraries on DSMS control;

. for update libraries

or . for update libraries on DSMScontrol;

. for libraries not authorized to the user

or . libraries under DSMS control not authorized to the user.


INSTANCE BROWSER AND LIBRARY

When you open the browser of an instance, its tabs open in the Library currently in use in the browser from which you have opened this instance.

This browser may be the workbench browser (instances list) or another instance browser (Data Structure for Segment, Dialog for Screen, Meta Entity for User Entity).

Also, when you open a second-level browser (description-level browser), its tabs open in the Library currently in use in the instance browser.

NOTE: This is a new behavior starting with the 3.5 Y02b workbench release.

Changing Libraries is therefore always an explicit operation: click the  icon, left-positioned in the tool bar of all tabs or panes. Choose a new Library in the list that opens.

When opened from an instance or description line browser, this list only displays Libraries dependent from that where the instance or description line is defined.

Overriding lines originating in higher Libraries requires in most cases the explicit selection of the 'Override' choice ('Selected' menu).

NOTE: Starting with the 350Y03b workbench release, description lines of eBusiness entities can no longer be overridden.

The new Library becomes the work Library for all the browser tabs, until you select a new one. As a matter of fact, you can be working in as many different Libraries as there are browsers opened.

USE TIP: To consult and edit the same instance simultaneously in different Libraries, select the 'Open in a new window' choice (popup menu/right click) and choose another Library. As a result, you will have two or more browsers opened for the same instance.

In this dialog box, under the Library list, you can also modify the associated view, which automatically applies to all the browser's tabs.

Different views on the Repository

The work Library is the starting point to the exploration of instances within the VA Pac Repository regarding import operations, visualization and printing of lists (instances or descriptions).

This work Library may be seen through different filters, called views, documented in details below.

The change of view applies to all the tabs of the current browser.


- Upward view
This is the default value.
Display of instances from the selected Library and its parent Libraries. If duplicates are found, only those from the dependent Library are displayed.
- Downward view
Display of instances from the selected Library and its dependent Libraries.
- Selected Library only
Display of instances from the selected Library only.
- Parent Libraries
Display of instances from the parent Libraries only (and not from the selected Library).

- **Dependent Libraries**
Display of instances from the dependent Libraries only (and not from the selected Library).
- **All Libraries**
Display of instances from the selected Library and its parent and dependent Libraries.
- **Upward view with duplicates**
Display of instances from the selected Library and its parent Libraries. If duplicates are found, they are all displayed.

Chapter 7. Lists of Instances

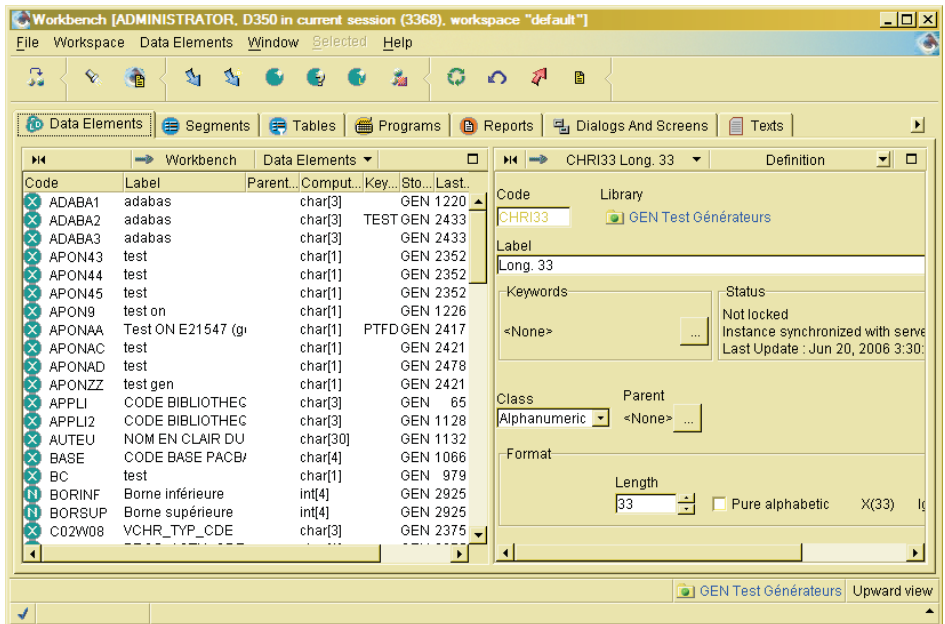
In this chapter, 'instances list' refers to the list of instances existing in your workspace, displayed in the current entity tab (workbench browser).

If this list is empty and if you want to work on one or more instances already existing, you need to import them into your workspace.

You can visualize the list of instances defined in the Repository via the  icon. Then, you can request the import of instances you have selected.

For additional information about import, see the 'Workspace, Import, Timestamp, Off line mode' chapter.

The list of instances, in the left pane of the tab, is usually a classic list.





NOTE: For some entities, a list with a tree-like structure is displayed.

This chapter gives the exhaustive list of possible operations from a list of instances. These operations are documented separately, in other chapters of this guide.

NOTE: In this chapter, information related to the notion of Library do not concern Administration specific entities as they are managed outside the Library context.

DISPLAY OPTIONS


- You can change the work Library via the  icon located below the list. This icon opens the Libraries list.
See also the chapter 'Sessions, Libraries, views'.
- You can also modify the view you have on lists of instances by selecting another view in the dropdown list, on the right of the icon mentioned above.
See also the 'Sessions, Libraries, views' chapter.
- If the list displays many instances, you may find it helpful to use the sort facility. Select the 'Sort by...' choice in the popup menu or in the '[Entity_name]' or 'Selected' (not available in tree-like structure lists) menus.
- Click the  icon in the tool bar to visualize the Definition details of the listed instances.

SEARCH OPERATIONS

You may request two different types of search

- Search instances by keywords.
- Search for references to an instance:
You search instances where a given instance is referenced. For example, you want to know in which Segments a given Data element is called.

You can request a search in several ways

- Click the 'Search' icon (), available in the toolbar of all the workbench tabs.
- From any list of instances, select an instance and click on the 'Search references...' or on the 'Search local references' choice in the popup menu or in the 'Selected' menu.
With the 'Search references...' choice, this search is by default made within the VA Pac Repository.
With the 'Search local references', the search scope is by default limited to your current workspace.

NOTE: A search by keyword(s) is also possible with these two choices.

This function is detailed in the 'Documentation functions' chapter.





PUBLISHING

With the 'Publish' icon, you can edit documents that include instances' lists and descriptions.

This function is detailed in the 'Documentation functions' chapter.

ICONS AND SIGNS

An instance list may show the following icons and signs:

-  means that the instance has been modified locally, a Save is needed.
-  shows a locked instance.
-  for Warning.
-  indicates an Error.

All entities are symbolized by a specific icon.

The icon background is grayed if you are not granted authorization to update the instance.

Example for a date Data Element: 

The icon background is white if the instance is defined in a Library different from your current working Library.

Example for a numeric Data Element: 

IMPORT OPERATIONS

- Import instances according to various selection criteria.
- Import or Create an instance by code.

The import function is detailed in the 'Workspace, Import, Timestamp, Off line mode' chapter.

OPERATIONS ON A SELECTED INSTANCE

- Create a new instance

Click on the 'Create a [entity_type]' in the toolbar or select the '[New entity]' choice in the popup menu (via right click) or in the '[Entity_type]' or 'Selected' menus.

- Open the instance browser

Click on an instance and select the 'Open' choice (popup menu via mouse right click or 'Selected' menu) or simply double click on the instance to open its browser.

- Open another browser for the instance

Click on an instance and select the 'Open in new window' choice (popup menu). This choice followed by the selection of another Library allows you to consult and edit a same instance simultaneously in different Libraries.

- Visualize the Definition of an instance

Click on an instance in the list; the Definition is displayed in the tab's right pane.

For the following operations, select an instance in the list, click on the mouse right button or on the 'Selected' menu.

- Override an instance
- Copy the instance Definition
- Duplicate the whole instance (Definition and Descriptions)
- Lock an instance

As a result, only you and the Administrator will be able to update this instance.

This function is detailed in the 'Instances lock' chapter.

NOTE: The  icon is displayed opposite the instance name.

- Unlock an instance

Other users can then update the unlocked instance.

- Change lock owner

This choice opens a dialog box where you enter the code of the new lock owner.

- Compare

The Compare/Align utility, activated with the 'Compare with server value' or 'Compare with another session/instance' choices, enables you to:

- Compare any instance in your Workspace (slave instance) with its server version (master instance).
- Compare any instance in your Workspace (slave instance) with:
 - its version from another session (comparison session),
 - another instance (entity type being identical) from a comparison session or in the same session (connection session).

From the results of the comparison, you can ask to align (totally or in part) the slave instance with the master instance.

If the master instance has been modified -- without a Save in the VA Pac Repository -- you can choose to use the workspace version or the server version of the master instance.



This function is detailed in the 'Search and comparison of instances' chapter.

- Generate an instance

This choice is reserved for entities which can be generated (ex: Program, Screen, eBusiness Application...).


See also the 'Generation' chapter.

For the eBusiness Application and Folder entities, you can generate:


- from the data present in your workspace ( icon in the toolbar or corresponding choice in the contextual menu),
- or from the Repository data ( icon in the toolbar or corresponding choice in the contextual menu),

Other operations on the instances


- SAVE

To save the changes made on an instance, select that instance, click on the 'Save' choice in the popup menu, or else click the  toolbar icon. That same icon which was present opposite the instance name in the list disappears.

- REFRESH

You may wish to retrieve the current server version of an already imported instance. To do this, select the instance, then click on the 'Refresh' choice in the popup menu or else click the  toolbar icon.

- DISCARD

If changes made on an instance are actually not to be saved, select that instance, click on the 'Discard Changes' choice in the popup menu, or else click the  toolbar icon.

- DELETE

To delete an instance (or an object), select that instance, click on the 'Delete' choice in the popup or 'Selected' menu.

If the instance has one or more dependencies in lower-level library(ies), a message informs you that dependencies exist and ask you to confirm the deletion. If you confirm, the instance and ALL its dependencies in lower-level library(ies) will be deleted.

WARNING: The deletions of instances are immediately performed in the Repository (after confirmation).

Chapter 8. Search and Comparison of Instances

Searching for Instances

You can search instances in several ways:

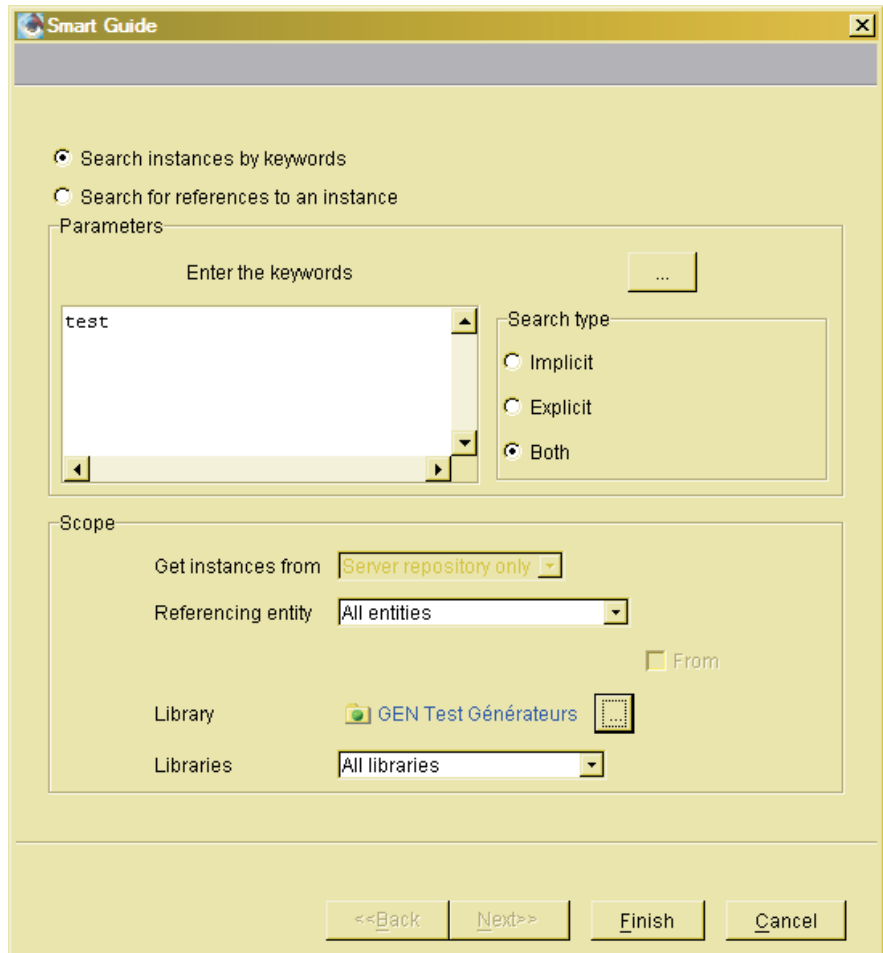
- Click the  icon in the toolbar to activate the Search utility.

The search smartguide proposes two types of search:

- Search instances by keywords.

Enter the keyword(s), your search criteria.

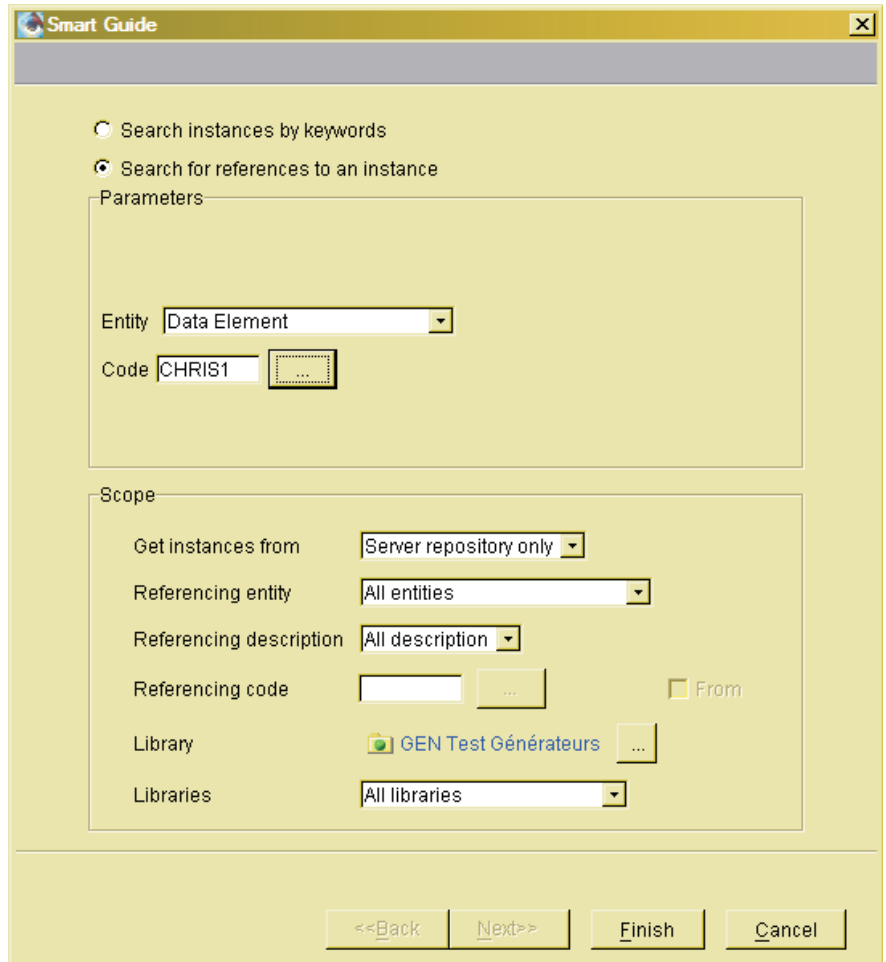
The keywords dictionary of a VA Pac Database is made of keywords used in instance labels (implicit keywords) and of explicit words entered as keywords in the instance Definition.



This search is available for all entities for which keyword management is provided. The scope of this search is necessarily the VA Pac Repository. Special characters and characters with accent are managed in Administrator workbench ('Window' menu, 'Open Parameter browser...' choice, 'Special character' tab). This management may have some impact on the search results.

- Search for references to an instance.

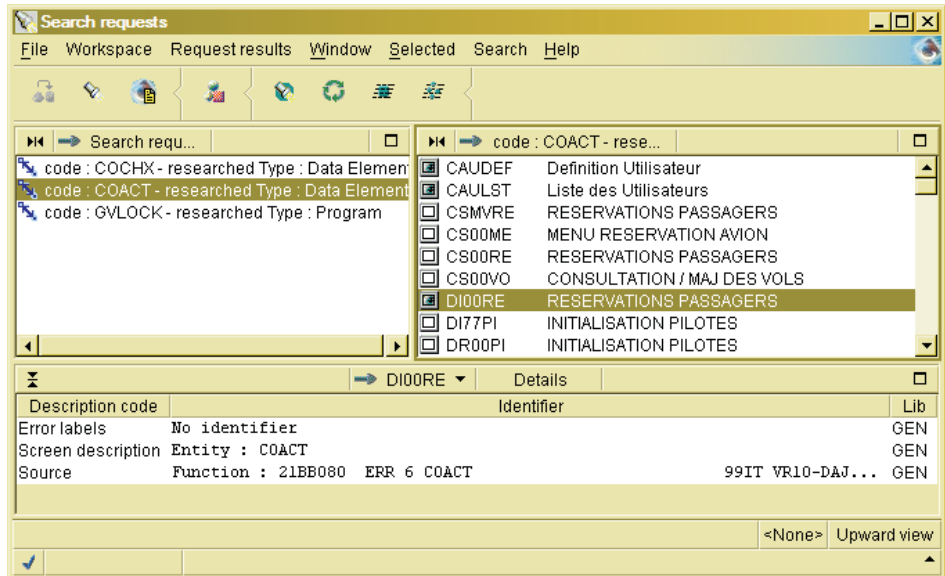
EXAMPLE : You search all the Logical views in which a given Data Element is called.



Enter the entity type and code of the considered instance, and optionally the entity type, description, indeed the code of the searched instance.

- Select an instance in a list and click on the 'Search references ...' choice in the popup menu. The same search smartguide opens up (see above), and, in this case, already contains the entity type and the code of the selected instance.

All of these searches are made within the VA Pac Repository and results are shown in a three-pane window.



The bottom pane displays the descriptions details of the referencing instance (previously selected in the top-right pane) where the searched instance is being used.

The left column displays the description code, the right column displays its identifier.

You can open the Description of a referencing instance selected in the list via a popup menu.

If you have requested a search based on one or more keywords, this pane remains empty.

- Select an instance in the list and click on the 'Search local references' choice in the popup menu.

In that case, the search scope is limited to your current workspace.

NOTE: A search by keyword(s) is also possible with the choices 'Search references ...' and 'Search local references'.

Comparing Instances

In all modules, except Administrator workbench, the Compare/Align Utility offers different options for comparing two instances. You can use this utility from:

- an instances list: you first select an instance in the list, and select 'Compare with server value' or 'Compare with another session/instance', choices in the popup or 'Selected' menus.
- from an instance browser: you select the 'Compare with server value' or 'Compare with another session/instance' choices in the '[Entity_name]' menu.

These choices respectively enable you to:

- Compare any instance in your Workspace (slave instance) with its server version (master instance) in the connection session.
If your connection session is a frozen session, the analyzed master instance is the instance stored in the same session.
- Compare a slave instance in your workspace with:
 - its version from another session (comparison session),
 - another instance of the same entity type from a comparison session or from the connection session (master instance).

Comparison results are displayed in a three-pane window.

Unlike the search results window, comparison results are not cumulative; each comparison opens its own results window.

- The top pane lists all the differences found (tree-like structure unfolding to differences found in the first level or second level Descriptions lines).
From this pane you can align the slave instance with the master instance for:
 - All its Descriptions.
 - The instance Definition.
This is possible only if you are comparing two versions of one instance (entity type and instance code are identical, respectively).
 - A Description of the instance.
 - A first- or second-level Description line of the instance.

In order to do this, first select the adequate line in the results tree, then click the 'Load Differences' choice in the popup or 'Selected' menus.

Disjoint multiple selection is possible among Description lines originating from the same Library.

With a multiple selection (whether disjoint or contiguous), in order to open the popup menu, you need to right-click outside of the selected lines, eg within the left margin.

- The bottom-left pane shows the differences found in the slave instance.
- The bottom-right pane shows the differences found in the master instance.

Chapter 9. Locking Instances

The Lock utility enables VA Pac users to take ownership of instances and thus prevent other users from modifying them. However, an Administrator can modify the instances locked by other users, without any warning.

Note: The entities specific to Administrator Workbench cannot be locked (eg Profile).

Note: You cannot lock a Data Structure and one of its Segments (if you lock the Data Structure, all of its Segments will be implicitly locked. If you lock a Segment, you will not be able to lock its Data Structure).

Locking an instance is carried out from the instance Definition Library or in a dependent Library and is valid for the entire Library branch.

As a result, an instance can only be locked ONCE in a given Library branch, ie a locked instance cannot be locked again in a higher or lower Library.

However, a locked instance can be locked in a parallel Library branch.

To unlock an instance or transfer its ownership, you must be:

- the lock owner or an Administrator,
- in the Library in which the instance was locked.

There are several ways to lock an instance:

- in the instances list,
- in the Locks Manager.

INSTANCES LIST

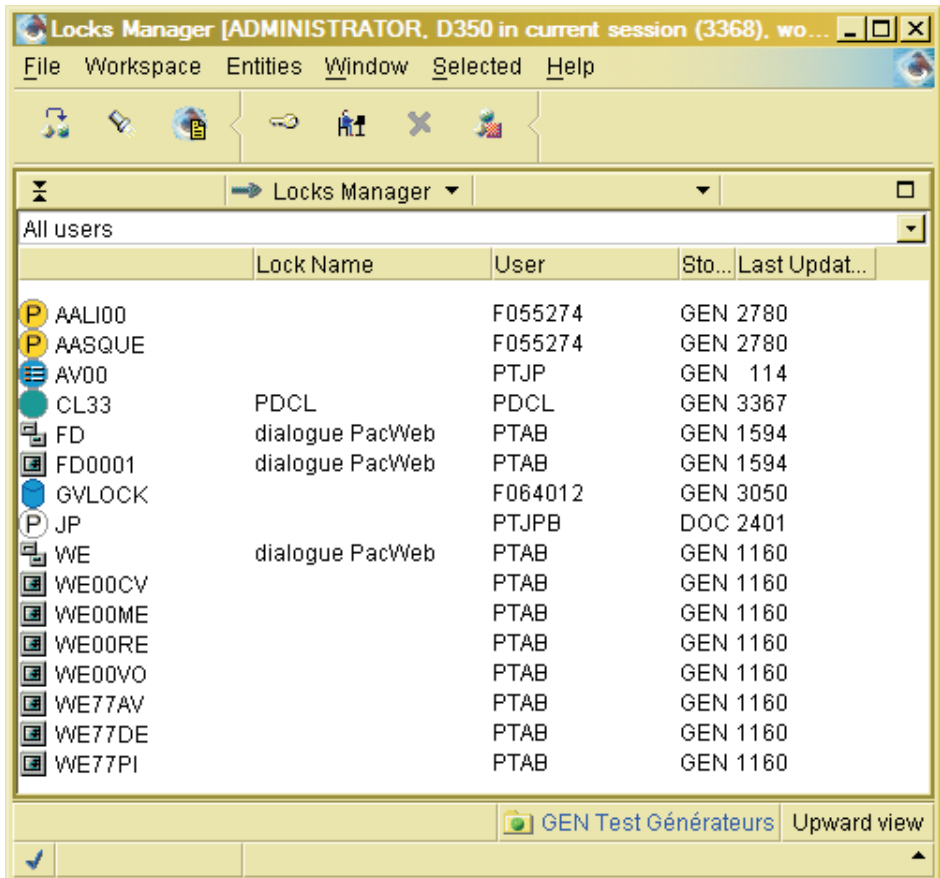
To lock an instance, right-click on the instance in the list and select 'Lock this instance' In the dialog box which opens up then, you may assign a name to the lock.

In instances lists, locked instances are marked with the  icon.

You can also change a lock user or change the lock name in the popup menu. All these choices you find in the popup menu are also available in the 'Selected' menu in the toolbar.



LOCKS MANAGER

To manage locked instances, use the Locks Manager. Accessible via the 'Windows' menu, it is user-centered. It allows you to view instances sorted by user/lock owner.



VA Pac users and Administrators can unlock and relock instances and transfer lock ownership.


To check which instances are locked by a given user:

- Click on  to Add user. Enter the user code.
- Select the code in the drop-down list.
- Press the  Search Locks icon.

As a result, all the instances locked by this user in the current Library branch are displayed.

NOTE: Each added user is saved in the list and therefore will also appear in the Locks Manager windows opened from other Library branches.

To view the locked instances of all users in this Library branch, use the 'All Users' option.

To remove a user from this list, click on the  icon to delete the selected user.

To view the lock name (if any), the storage Library and last update session of the locked instances, click on the 'Show Details' icon.

To unlock or relock a locked instance, right-click on the instance code and select 'Unlock' or 'Lock'.

You can modify a lock user from the popup menu via the 'Change lock user' choice, or modify a lock name via the 'Change lock name' choice.

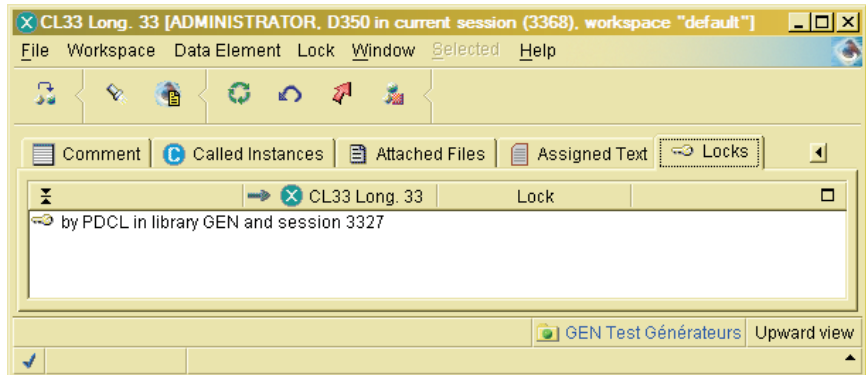
All these choices are also available via the 'Selected' menu.

You have two other choices in the popup menu, it is the 'Select columns' choice, it is used to display only the columns of your choice. When you click on the menu, a dialog box opens and you can choose only the columns you want to visualize in the lock manager. The other choice is 'Sort by' that you can use to sort the list of entities.


LOCKS TAB

This tab exists in the browser of all instances which can be locked. It lists the lock(s) associated with the instance, visible in the selected Library view for this browser.

Note: You cannot lock a Data Structure and one of its Segments (if you lock the Data Structure, all of its Segments will be implicitly locked. If you lock a Segment, you will not be able to lock its Data Structure).



For each lock, this tab displays the lock owner, the current Library and session in which the instance was locked.

If you click the  icon in the toolbar, you can also see the lock name (if any), the storage Library and last update session number.

To unlock an instance or to transfer lock ownership, you must be:

- the lock owner or an Administrator,
- in the Library in which the instance was locked.

To unlock an instance, select the lock and click on the 'Unlock' option in the contextual menu.

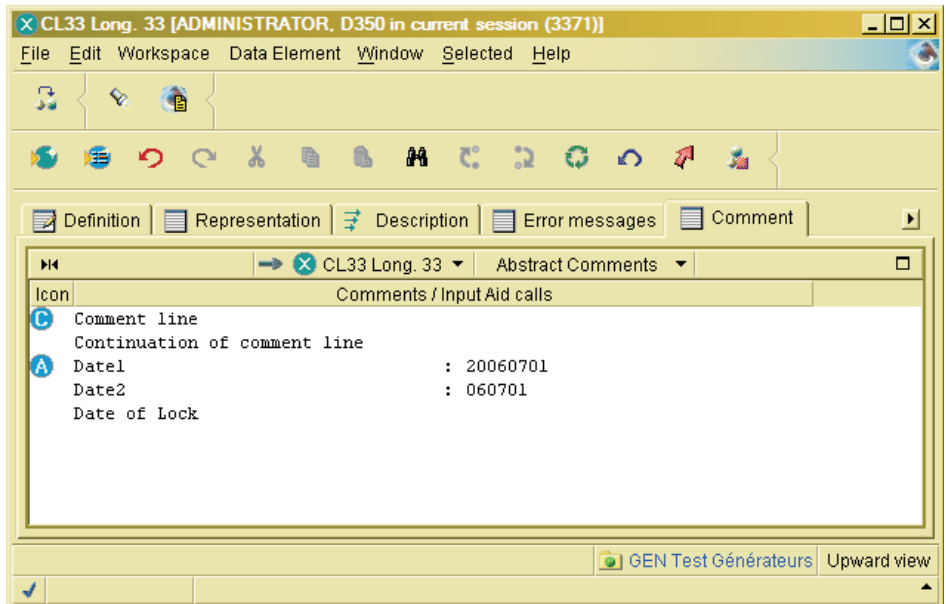
To transfer Lock ownership to another user, select 'Change lock user' in the contextual menu and enter a new user.

To change the lock name, select a lock and 'Change lock name' in the contextual menu. A dialog box opens up then.

Chapter 10. Documentation Functions

Comments


The 'Comment' tab is available in the browser of all the development entities.



This tab enables you to:

- create or modify comments on an instance.

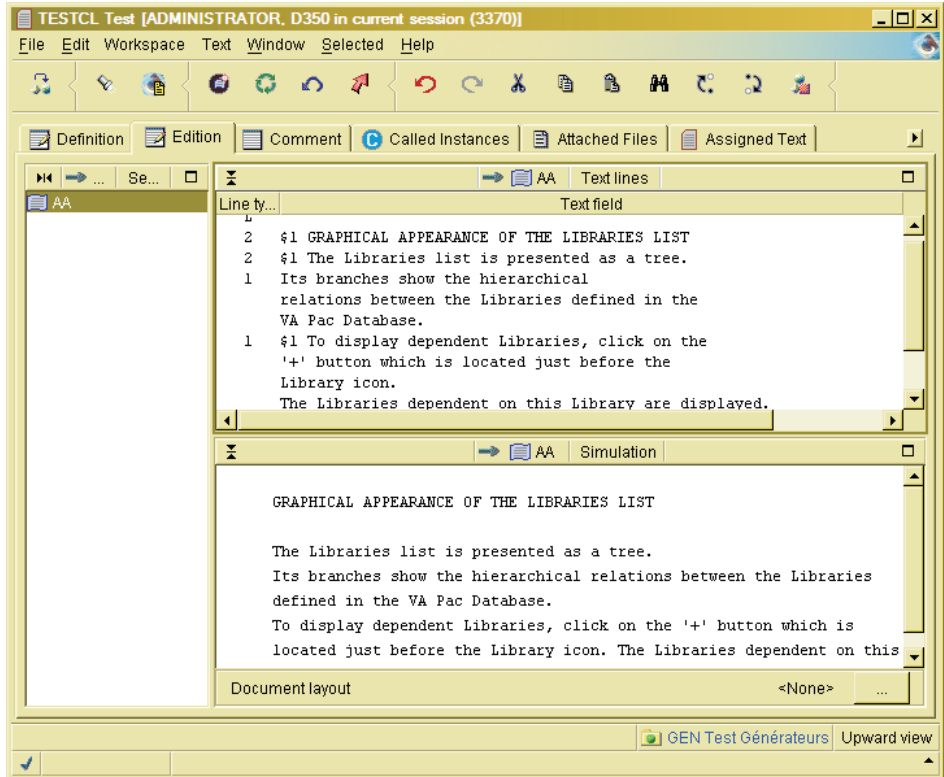
Such lines are identified by the  icon in the tab.

- call one (or more) Input Aid(s) using the  icon in the toolbar, or the 'Call an Input Aid' choice (popup, 'Selected', or 'Comments' menus). Use this same icon or choice to replace an Input Aid call by another.
- enter or modify Input Aids edit fields, all aligned in the second column. The Input Aid entity contributes to standardize, therefore facilitate, your work; it makes repetitive input fast and easy. In addition, it allows for the automatic display of pre-formatted input lines with or without controlled input values. For additional information on this subject, see the 'Input Aids' chapter.

Texts

The Text browser is available in all eBusiness, Dialog, Batch modules and in Global workbench.

The example in the screen image below illustrates the use of the Edition tab. As you type in your text in the top pane, a print preview is dynamically displayed in the bottom pane.



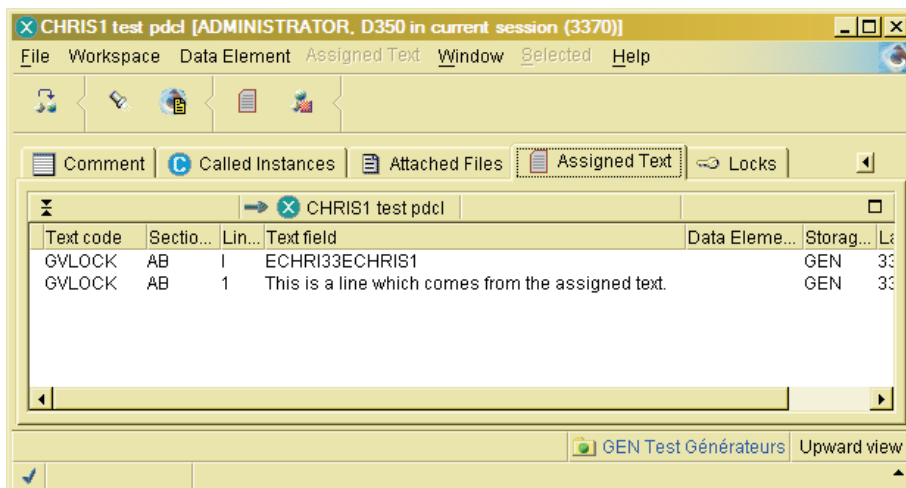
The Text entity is used to document applications throughout their whole life cycle.

- During the Analysis and Design Phases, it is used to describe processes, procedures, operations, tasks, ...
- During the Development Phase, it is used to document Screens, Programs, Reports...

Texts can be:

- Called in PDM Volumes (or Documents) to make documentation available to maintenance teams and end-users.
- Assigned to instances of all entity types.

A cross-reference is created which facilitates the maintenance of both the documented instance and its assigned Text. It is visible in the 'Assigned Text' tab of this instance browser.



- Used to create online help for generated online applications (Dialog module).
For complete information, consult the online help of the Dialog and Screen browsers.

You can also reference a Data Element code on each Description line of a Text.

NOTE: These Data Element do not have to be defined in the Repository. You can then reference - while in the design phase - properties which will be created later on.

For a detailed documentation on the Text browser, consult its online help.

Volumes

From the Volume browser, a wide range of documentation types can be produced: long-range plans, analysis reports, functional and technical specifications, and end-user manuals.

To create such a document, you must create an instance of Volume.

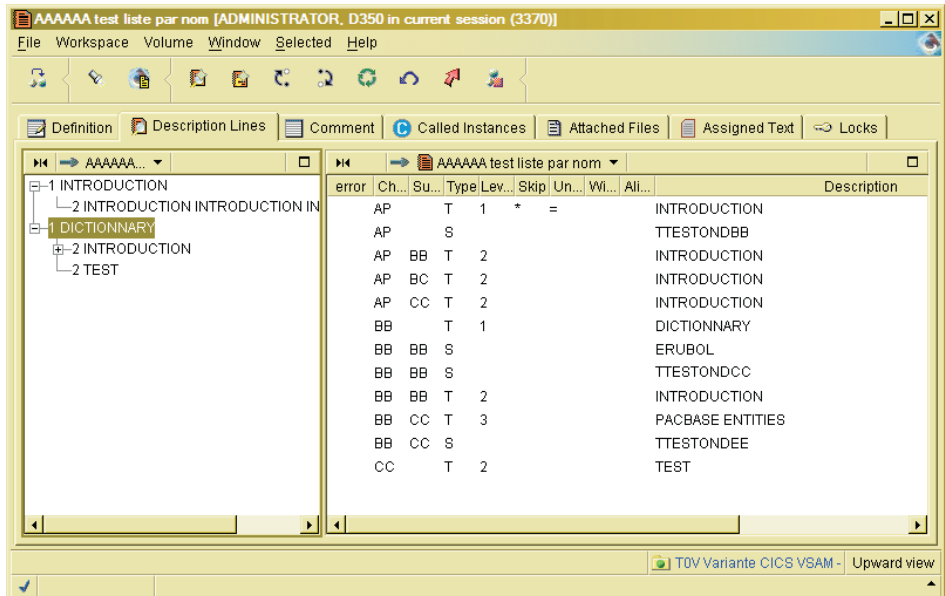
The contents of a Volume is described in instances of almost any entity types (Text, Program, Screen, Segment, etc.) managed in the Specifications Database and called from the Volume browser.

VOLUME CHARACTERISTICS

The structure of a Volume allows up to nine embedded sections, automatically reflected in the Table of Contents by up to nine subentry levels.

A section contents is built by calling instances of entities (at least) defined in the Specifications Database.

A variety of presentation options are available such as automatic printing of title pages and text alignment (Align Left, Align Right, Center, Justify...), and presentation of selected entities (choice of Data Elements format in a Segment description for example).



Page layout settings which control the overall appearance of a Volume, are made in a dedicated Report instance, the Volume Print layout.

Another Report instance, the specific layout (optional), enables you to define specific layout characteristics for title, title-pages, the Table of Contents and the Index table.

For more information on the Volume Layouts, refer to the Reference Manual 'Personalized Documentation Manager'.

A Volume's layout description must be done in the 'Report' browser, 'Composition' tab, within the 'Labels' pane.

For a detailed documentation on the Volume browser, consult its online help.

External Files

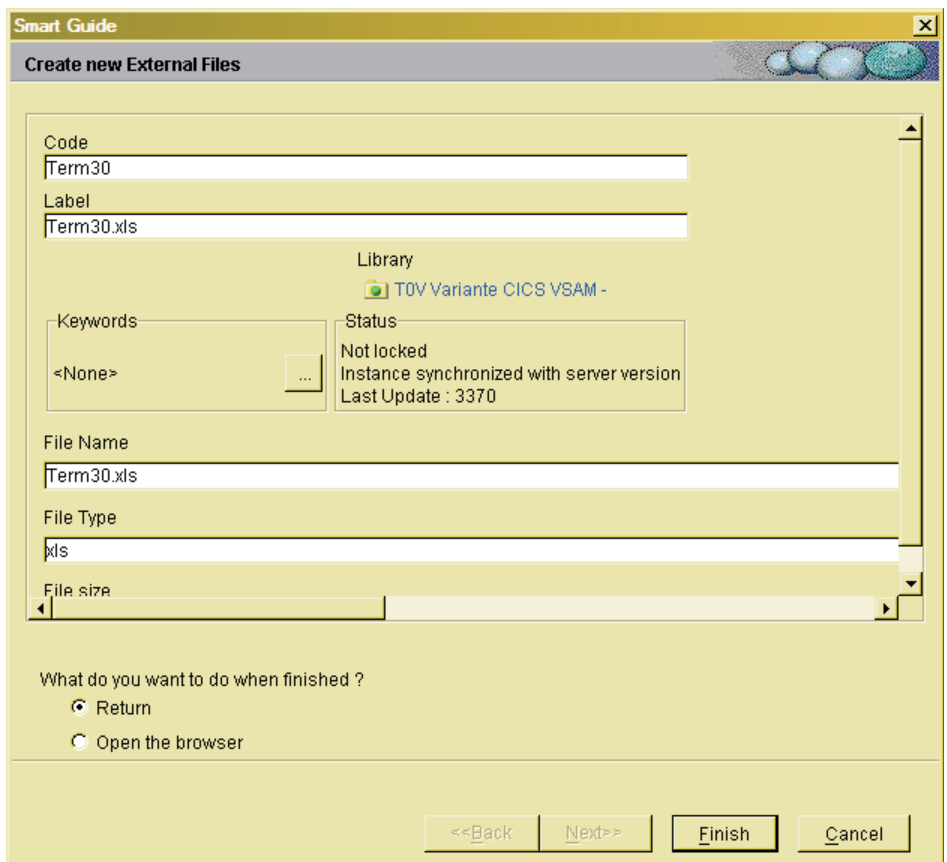
Creating an External File

EXTERNAL FILE

An External File is an instance saved in the VisualAge Pacbase Repository but whose content has been created (and can be read and edited) via an application different from VisualAge Pacbase. External Files are of all types (with a .doc, .txt, .jpg, etc. extension).

Declaring a local file as an External File creates a copy of this file. The data it contains will then benefit from the advantages of storage in the VA Pac Repository.

This operation is performed from the 'External Files' tab, available in all modules.



The screenshot shows a 'Smart Guide' dialog box titled 'Create new External Files'. The dialog is divided into several sections:

- Code:** A text field containing 'Term30'.
- Label:** A text field containing 'Term30.xls'.
- Library:** A dropdown menu showing 'T0V Variante CICS VSAM -'.
- Keywords:** A dropdown menu showing '<None>' with an ellipsis button.
- Status:** A text area displaying 'Not locked', 'Instance synchronized with server version', and 'Last Update : 3370'.
- File Name:** A text field containing 'Term30.xls'.
- File Type:** A dropdown menu showing 'xls'.
- File size:** A progress bar.

At the bottom, there is a section titled 'What do you want to do when finished ?' with two radio buttons: 'Return' (selected) and 'Open the browser'. Below this are four buttons: '<<Back', 'Next>>', 'Finish', and 'Cancel'.

In the Administration module, there is also an 'External Files (Admin)' tab. These Files can only be attached to Administration entities (ex: User, Database...).

To save a local file as an External File:

1. First create it in the workspace,
2. Save its contents in the Repository ('Save' choice in the popup menu).

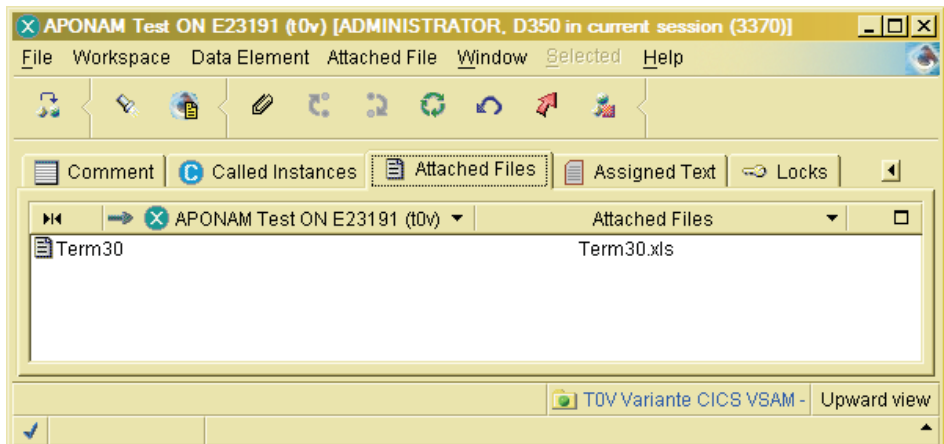
The data stored in the External File is saved only once the File has been saved in the Repository.

NOTE: Once a file is an External File instance, it is recommended not to update the original file but to edit this instance from the workbench.

An External File can be attached to one or more instances of virtually all entity types. To do so, open the 'Attached Files' tab in the browser of the concerned instance.

Attaching an External File to an Instance

The 'Attached Files' tab allows you to attach one or more instances of External Files to an instance in the same way as you would attach a file to a mail. External files can be of any type such as .doc, .pdf, etc.






Once an External File instance is attached, cross-references are automatically created between the File and the instance which calls it.

In this tab, you can:

- attach an External File instance,
- delete an External File attachment,
- perform open, edit and export operations on an attachment.

ATTACH AN EXTERNAL FILE

To attach an External File, use the 'Add Attached File' choice ('Attached File' menu) or the  icon in the tool bar.

- If the External File to be attached has been saved in your current workspace, you just have to select it in the list which opens up and click [OK].
- Else, from the 'External Files' tab (workbench browser), you first have to:
 - either create a new External File from the file of your choice, by using the  icon.
 - or import an External File from the Repository by using the  icon.

The new attached file appears in the attached files list of the open instance.

DETACH AN ATTACHED FILE

To detach an attached file, select the concerned File and click the 'Delete' choice in the popup menu.

NOTE: This action has no impact on the content of the Attached File, nor on the existence of the External File in the Repository.

OPERATIONS ON AN ATTACHED FILE

Via the popup menu or the 'Attached File' menu, you can open the browser of an External File, edit the File using the proposed application, or choose another application via the 'Edit with' option.

NOTE: A File which has been edited from the workbench is marked with a red arrow in the Attached Files List indicating it requires a Save in the VA Pac Repository.

You can also export an External File to a local drive of your choice. In this way, External Files are not confined to the Repository but can be distributed outside VA Pac, for example as mail attachments.

When exporting an External File, it is recommended to keep the default File name proposed.

Input Aids

The Input Aid browser is available in Global workbench and Administrator workbench.

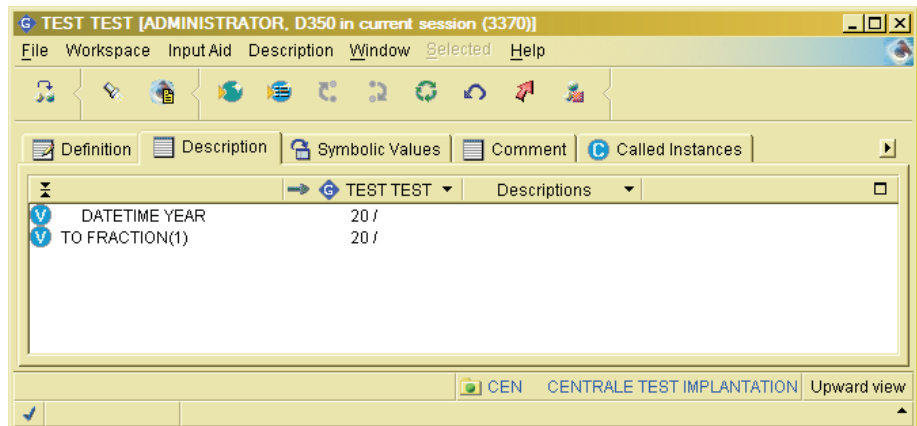
The Input Aid entity contributes to standardize therefore facilitate the developer's work; it makes repetitive input fast and easy. In addition, it allows for the automatic display of pre-formatted input lines with or without controlled input values.

NOTE: No specific authorization is needed to specify Input Aids instances.

An Input Aid can be called by instances of virtually all entity types (including the Input Aid entity) in the Comment tab.

The Input Aid entity includes the following specific tabs:

- A Description tab where you define one or more constant and/or variable lines with or without initial value.



- A Symbolic Values tab, where you may define the authorized values for editable parts, thus allowing input control on variable lines. This control is effective for variable lines whose editable part length is set to '3'. This constraint, due to internal reasons, has no impact on the actual length of authorized values.

WARNING: When an Input Aid is called by at least one instance, you will no longer be able to add nor delete variable lines. Also, the lengths of variable fields can no longer be modified.

For a detailed documentation about this browser, consult its online help.

Publishing

The Document browser enables you to define Documents/templates and then to describe their content in the XML format.

You will then be able to edit these Documents in the HTML, XML or any other format using the 'Publish' icon in the workbench tool bar.

Documents are related to all the entities of Developer workbench and also to entities managed in Administrator workbench and stored in a Library (Meta Entity, User Relation, Input Aid, Environment).

Administration documents are related to entities exclusively managed in Administrator workbench (out of context of Library).

Beside the classical entities, Documents can be linked to:

- Descriptions (Comments),
- 'Workspace', to publish list of entities,
- 'Entity', to factorize behaviors which are common to all VA Pac entities.

On the other hand, Templates are not linked to any entity. They are used to speed up the creation process of Documents by initializing their contents.

The Documents/templates browser is made of the following specific tabs:

- Source, which presents the content of the Document/template in a Visual XML format,
- Properties (not available for templates), which contains data on the Document output format.

Particular case: Services Modeler Entities

The 'Documentation' tab allows you to associate with each of the entities which compose a Service (Service, Operation, Message, Part and Soap binding entities), with a documentation of the following types: technical-, functional- and user-type documentation.

Text editors are available to you in sub-tabs.

These editors, however similar in presentation, are independent, one for each type of documentation.

Because of this same graphic presentation, it is important, to understand fully its added value, to respect through its contents, the use primarily reserved for each of this documentation type.

This reserved use is proposed to you in the online help of each 'Documentation' sub-tab ('Technical', 'Functional' and 'User').

In each of the text editors opened from these sub-tabs, you type your text in word wrap mode.

The only formatting function available is the paragraph (RETURN key).

This format is restored at generation to produce a documentation which can be read easily.

Technical Documentation

This documentation is reserved for the architect of the Service.

It describes the architecture of the Service, i.e. the technical choices, the management rules, the limitations, ...

It is thus important that this documentation be available at any time, both at implementation and maintenance stages.

Once typed in the text editor, this documentation is generated via the publishing function and then stored in and readable from the AD workbench.

Functional Documentation

The functional documentation is reserved both for the architect and for the user of the Service.

It provides a functional description of the Service, of its Operations, of the structure of the Messages (input/output) as well as the Binding.

Once typed in the text editor, this documentation is generated in the WSDL file, framed by 'functional documentation' tags.

User Documentation


This documentation is reserved for the end-user who wishes to access the Service.

It provides a clear description, easy to understand of each of the entities that compose a Service.

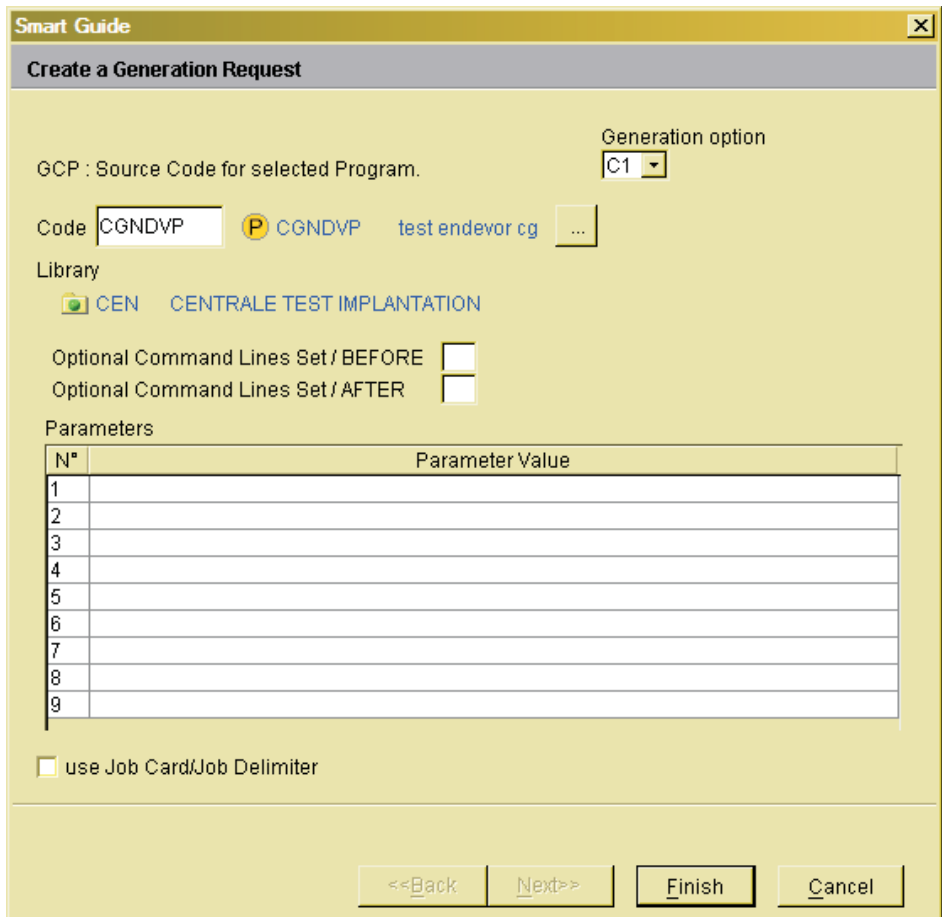
Once typed in the text editor, this documentation is generated in the WSDL file, framed by 'user documentation' tags.

Chapter 11. Generation

To generate one or more instances, select the 'Generation Manager' choice in the 'Window' menu.

To create a new generation request, click the  icon in the tool bar of the Generation manager.

First select your request in a drop-down list which contains all the generations associated with the current module, then enter the instance to generate. You may also enter other characteristics specific to the request:



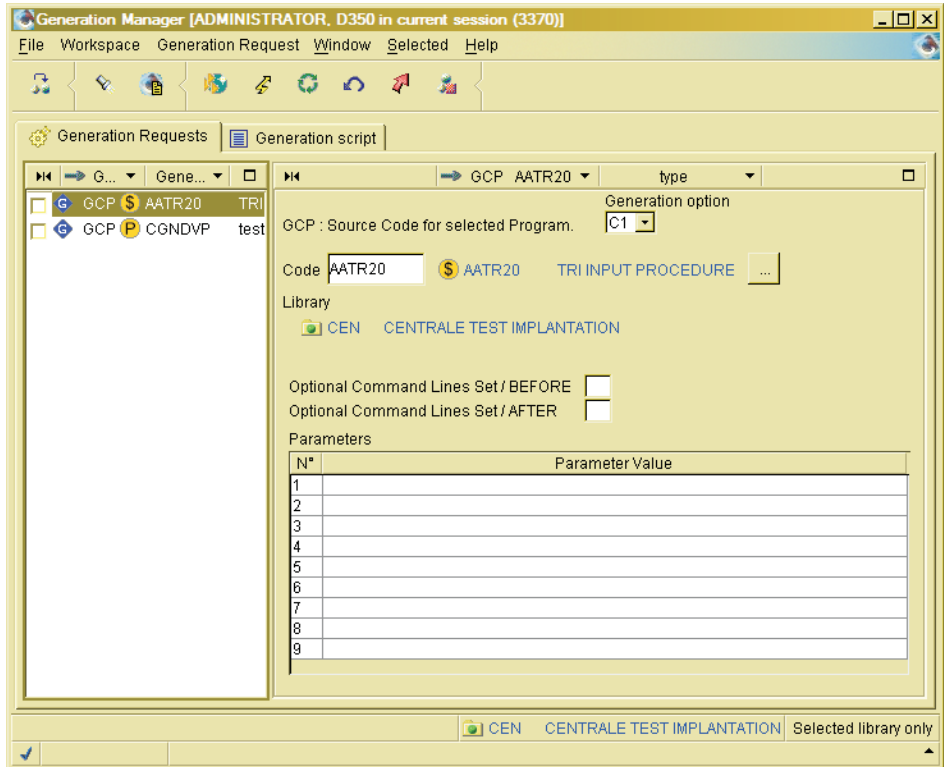
The dialog box titled "Smart Guide" has a subtitle "Create a Generation Request". It contains the following fields and controls:

- Generation option:** A dropdown menu currently showing "C1".
- GCP:** Labeled "Source Code for selected Program."
- Code:** A text input field containing "CGNDVP", followed by a button with a "P" icon, the text "CGNDVP", and a button with "test endeavor cg" and an ellipsis "...".
- Library:** A section with a folder icon and the text "CEN CENTRALE TEST IMPLANTATION".
- Optional Command Lines Set / BEFORE:** A checkbox.
- Optional Command Lines Set / AFTER:** A checkbox.
- Parameters:** A table with 9 rows and 2 columns: "N°" and "Parameter Value".
- use Job Card/Job Delimiter:** A checkbox.
- Buttons:** "<<Back", "Next>>", "Finish", and "Cancel".

| N° | Parameter Value |
|----|-----------------|
| 1 | |
| 2 | |
| 3 | |
| 4 | |
| 5 | |
| 6 | |
| 7 | |
| 8 | |
| 9 | |

The Generation manager is a two-tab browser:

- The 'Generation Request' tab displays, in the left pane, the list of generation requests. If an instance is selected, its characteristics are displayed in the right pane.



- The other tab is subdivided into two parts which initially display, if any, the user's command line set. These lines are created by an Administrator in the User browser.
You ('user') may modify these lines or create new ones to satisfy your own specific needs.

To start the generation, select the listed request(s) (in the check box on the left), and click the  icon.

For a detailed documentation about this browser, consult the online help.

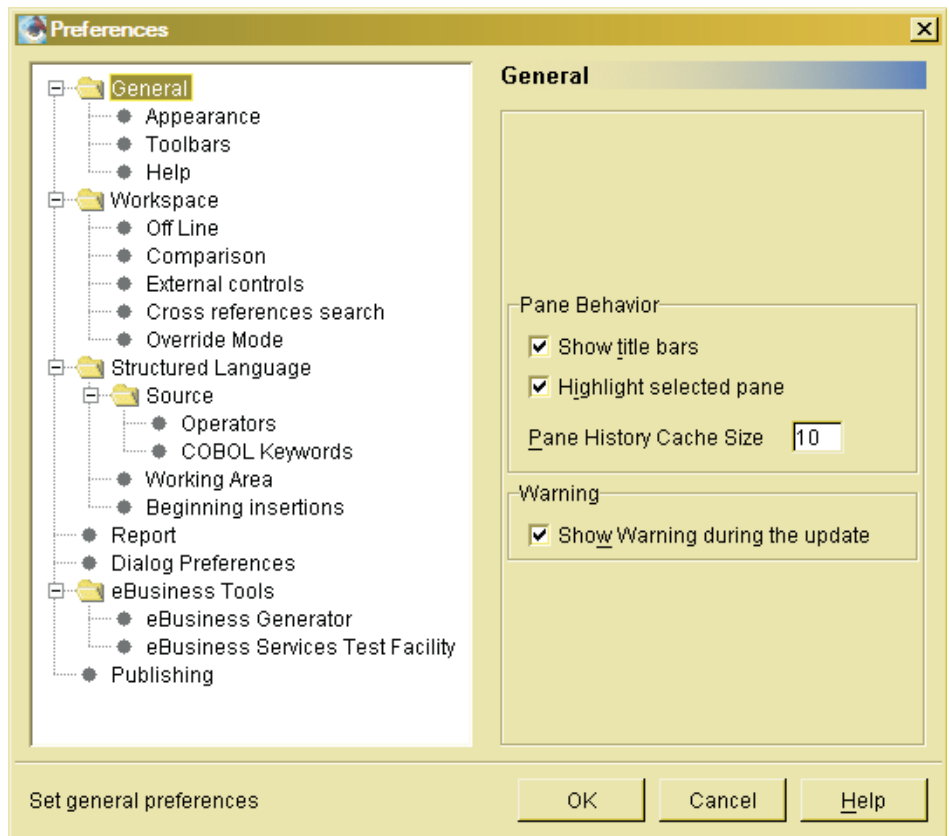
Chapter 12. Preferences

You can customize the general look and feel of Administrator & Developer workbench.

Before working in AD workbench, it is advised to verify the default options, and -- if needed -- modify them. As if some preferences have a limited impact, such as preferences related to your workbench graphic appearance, others have an important functional role.

To customize your workbench, use the 'Preferences' choice in the 'File' menu.

The dialog box that appears has a tree-like structure whose branches vary according to the module being used.



Preferences may be generic or specific to the used module. In the example below, the eBusiness Tools preferences are available in the eBusiness and Global workbench modules only.

However, all preferences are saved for a given module. If you use several modules, the generic preferences modifications are not automatically carried over from a module to another one. For a detailed documentation about preferences, use the [Help] button.



Part Number: DSDEV000353A - 7907

Printed in USA