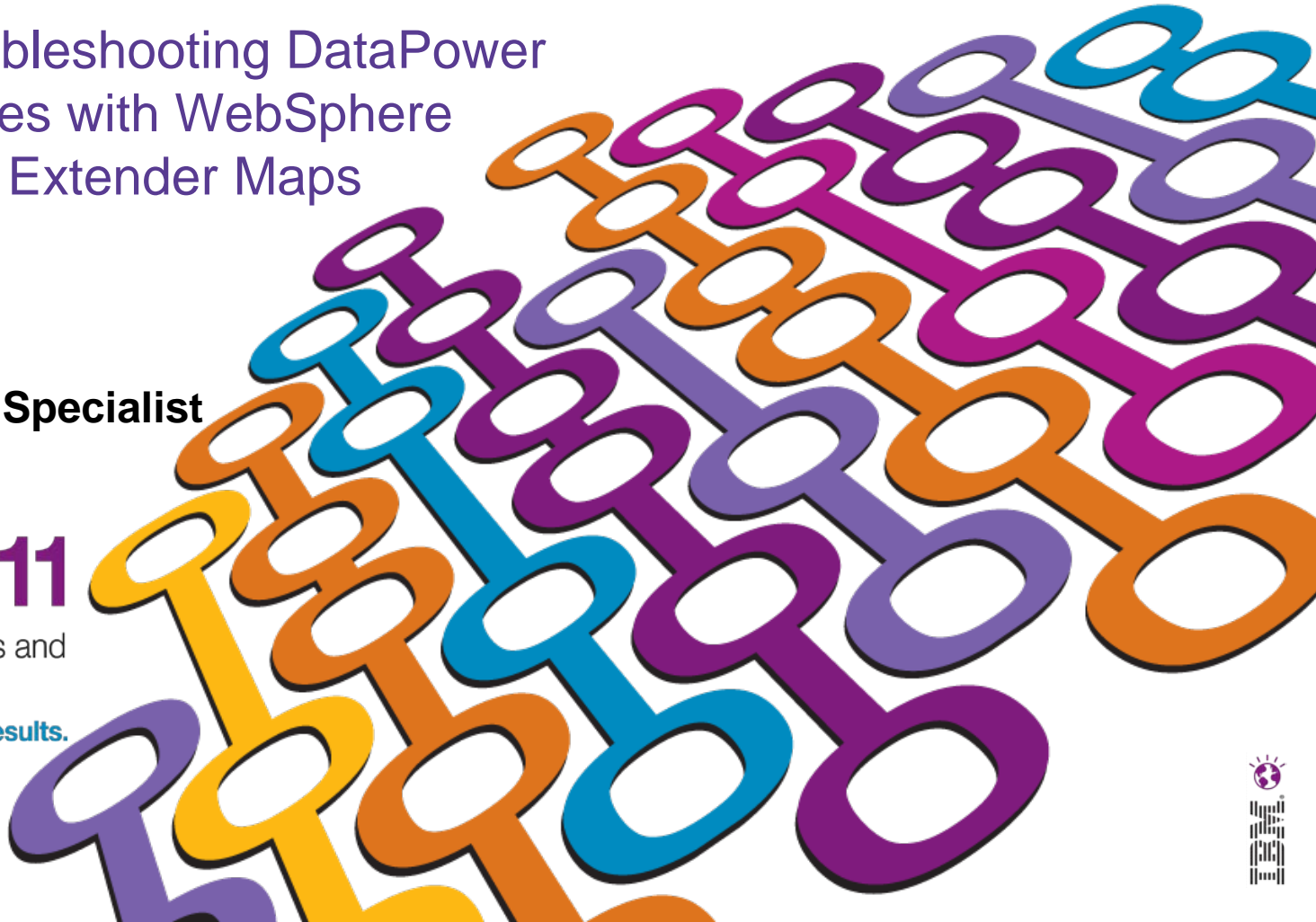


AVP-2934 Troubleshooting DataPower Integration issues with WebSphere Transformation Extender Maps

Dewey Donovan
Accelerated Value Specialist

IBM Software
Impact2011
Changing the Way Business and
IT Leaders Work
Optimize for Growth. Deliver Results.





WTX and DataPower Integration Lab

■ Agenda

- Introduction
- Lab Walkthrough
 - Starting the lab
 - Integrating WTX Design Studio and DataPower
 - Testing Maps on DataPower Directly from Design Studio
 - » http-based service
 - » https-based service
 - Uploading Maps to DataPower file system from Design Studio
 - Building DataPower Services
 - Configuring for MultiCard Map
 - Troubleshooting Common Issues





WTX and DataPower Integration Lab

- Introduction (Motivation and Background)
 - WTX Maps are commonly used for data transformations, particularly binary (non-XML)
 - DataPower services provide extensive functionality:
 - Security, threat protection
 - Application isolation and proxy
 - Processing speed
 - Integrating WTX maps into DataPower runtime provides powerful blend of strengths of each
 - There are a number of restrictions in the DataPower runtime engine (DataGlue) affecting WTX maps
 - This story is getting *better* by release (of both products)
 - See the product documentation (both WTX and DataPower) for detailed information





WTX and DataPower Integration Lab

- Introduction (continued)
 - Software Components - current versions
 - WTX v 8.3.0.3
 - DataPower v 3.8.2.2 (we're using v 3.8.2.1 in this lab)
 - DataGlue Engine is the required component needed to execute WTX maps on DataPower
 - Available on XI50, XB60, XM70
 - Not available on XS40, XA35
 - DataGlue engine can also execute Contivo Analyst maps
 - DPA mode on DataPower is the preferred compiled map format for WTX maps
 - First introduced in WTX v8.2.0.3 (with patch) and DataPower firmware v3.7.2





WTX and DataPower Integration Lab

- Lab Walkthrough
 - Starting the lab
 - VMware image on each workstation should be running
 - **DO** pay attention your workstation ID (**01 – 20**)
 - Will prevent collisions with your fellow lab participants
 - **DON'T** hesitate to ask for help
 - Integrating WTX Design Studio and DataPower
 - Testing Maps on DataPower Directly from Design Studio
 - » http-based service
 - » https-based service
 - Uploading Maps to DataPower file system from Design Studio
 - Building DataPower Services
 - Configuring for MultiCard Map
 - Troubleshooting Common Issues





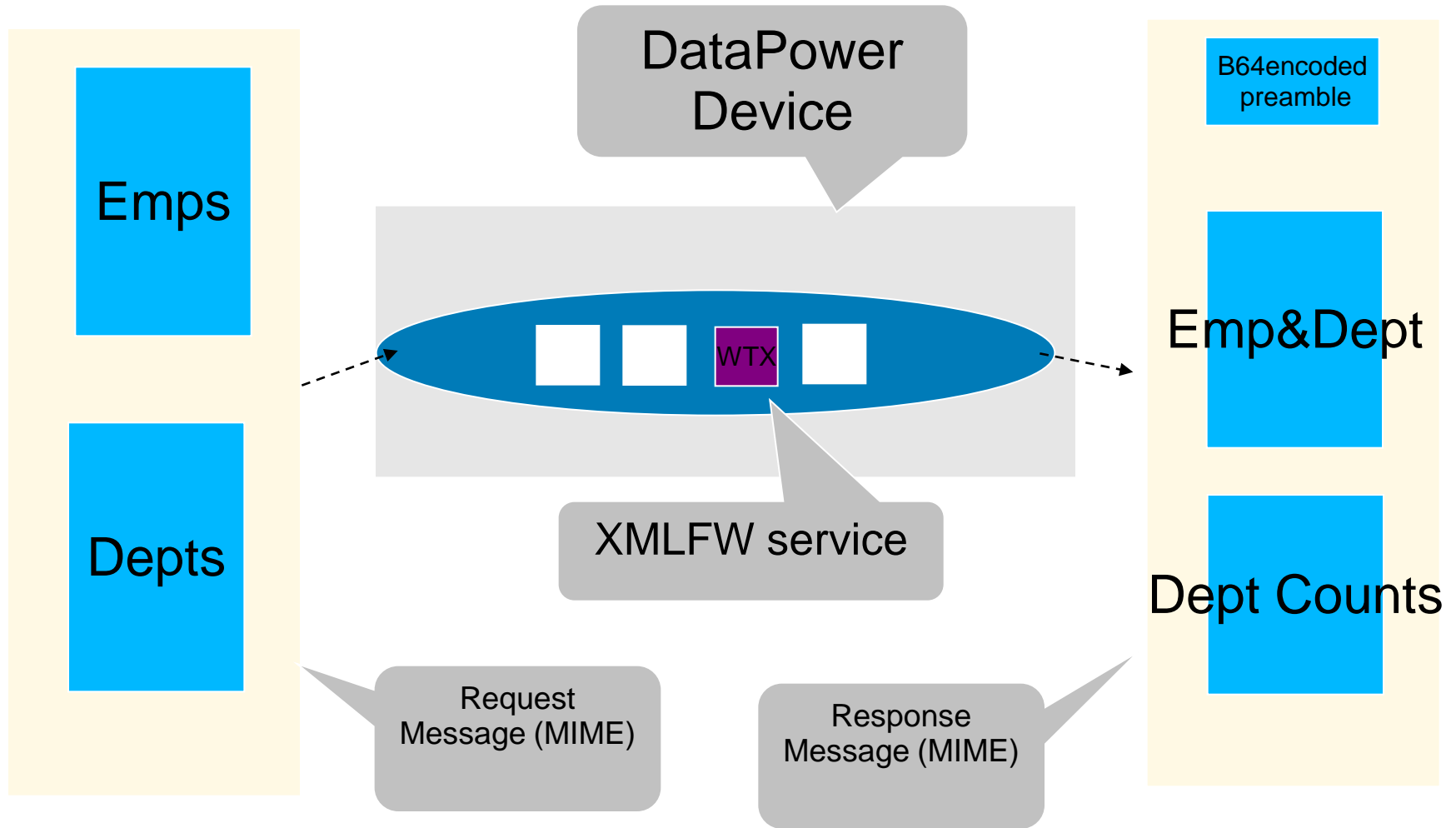
WTX and DataPower Integration Lab

- Lab Walkthrough (continued)
 - Integrating WTX Design Studio and DataPower
 - Parts 1 through 4 (NOTE – ‘skip’ sections p17 and p31)
 - Testing Maps on DataPower Directly from Design Studio
 - » Typically a developer role
 - DataPower setup typically a one-time admin activity
 - » http-based service
 - » https-based service
 - Uploading Maps to DataPower file system from Design Studio
 - » Usually a developer activity
 - Building DataPower Services
 - Parts 5 through 8
 - Building DataPower Services
 - » Configuring for MultiCard Map
 - » Troubleshooting Common Issues



WTX and DataPower Integration Lab

- The runtime exercise



cURL HTTP post



WTX and DataPower Integration Lab



■ References

– WebSphere Transformation Extender InfoCenter

- http://publib.boulder.ibm.com/infocenter/wtxdoc/v8r3m0/topic/com.ibm.websphere.dtx.md.doc/concepts/c_md_datapwr_overview.htm

– WebSphere DataPower InfoCenter

- http://publib.boulder.ibm.com/infocenter/wsdatap/v3r8m2/nav/3_4_3





We value your feedback

- **Please** complete the survey for this session!
- The session is:
 - AVP-2934 Troubleshooting DataPower Integration issues with WebSphere Transformation Extender Maps

Thank you...

