



IBM Software Group

# What's New in IBM Express Runtime Version 2.1?

**IBM Virtual Innovation Center**



IBM Express Runtime

© 2005 IBM Corporation

# Notices

This information was developed for products and services offered in the U.S.A.

Note to U.S. Government Users Restricted Rights -- Use, duplication or disclosure restricted by GSA ADP Schedule Contract with IBM Corp.

IBM may not offer the products, services, or features discussed in this document in other countries. Consult your local IBM representative for information on the products and services currently available in your area. Any reference to an IBM product, program, or service is not intended to state or imply that only that IBM product, program, or service may be used. Any functionally equivalent product, program, or service that does not infringe any IBM intellectual property right may be used instead. However, it is the user's responsibility to evaluate and verify the operation of any non-IBM product, program, or service.

IBM may have patents or pending patent applications covering subject matter described in this document. The furnishing of this document does not give you any license to these patents. You can send license inquiries, in writing, to:

IBM Director of Licensing, IBM Corporation, North Castle Drive Armonk, NY 10504-1785 U.S.A.

The following paragraph does not apply to the United Kingdom or any other country where such provisions are inconsistent with local law: INTERNATIONAL BUSINESS MACHINES CORPORATION PROVIDES THIS PUBLICATION "AS IS" WITHOUT WARRANTY OF ANY KIND, EITHER EXPRESS OR IMPLIED, INCLUDING, BUT NOT LIMITED TO, THE IMPLIED WARRANTIES OF NON-INFRINGEMENT, MERCHANTABILITY OR FITNESS FOR A PARTICULAR PURPOSE. Some states do not allow disclaimer of express or implied warranties in certain transactions, therefore, this statement may not apply to you.

This information could include technical inaccuracies or typographical errors. Changes are periodically made to the information herein; these changes will be incorporated in new editions of the publication. IBM may make improvements and/or changes in the product(s) and/or the program(s) described in this publication at any time without notice.

Any references in this information to non-IBM Web sites are provided for convenience only and do not in any manner serve as an endorsement of those Web sites. The materials at those Web sites are not part of the materials for this IBM product and use of those Web sites is at your own risk.

IBM may use or distribute any of the information you supply in any way it believes appropriate without incurring any obligation to you.

Information concerning non-IBM products was obtained from the suppliers of those products, their published announcements or other publicly available sources. IBM has not tested those products and cannot confirm the accuracy of performance, compatibility or any other claims related to non-IBM products. Questions on the capabilities of non-IBM products should be addressed to the suppliers of those products.

This information contains examples of data and reports used in daily business operations. To illustrate them as completely as possible, the examples include the names of individuals, companies, brands, and products. All of these names are fictitious and any similarity to the names and addresses used by an actual business enterprise is entirely coincidental.

#### COPYRIGHT LICENSE:

This information contains sample application programs in source language, which illustrates programming techniques on various operating platforms. You may copy, modify, and distribute these sample programs in any form without payment to IBM, for the purposes of developing, using, marketing or distributing application programs conforming to the application programming interface for the operating platform for which the sample programs are written. These examples have not been thoroughly tested under all conditions. IBM, therefore, cannot guarantee or imply reliability, serviceability, or function of these programs. You may copy, modify, and distribute these sample programs in any form without payment to IBM for the purposes of developing, using, marketing, or distributing application programs conforming to IBM's application programming interfaces.

# Trademarks

The following terms are trademarks of the International Business Machines Corporation in the United States, other countries, or both:

Eserver	OS/400®
i5/OS™	POWER™
DB2 Universal Database™	Rational®
DB2®	WebSphere®
IBM®	

The following terms are trademarks of other companies:

Intel, Intel Inside (logos), MMX, and Pentium are trademarks of Intel Corporation in the United States, other countries, or both.

Microsoft, Windows, Windows NT, and the Windows logo are trademarks of Microsoft Corporation in the United States, other countries, or both.

Java and all Java-based trademarks and logos are trademarks or registered trademarks of Sun Microsystems, Inc. in the United States, other countries, or both.

UNIX is a registered trademark of The Open Group in the United States and other countries.

SET, SET Secure Electronic Transaction, and the SET Logo are trademarks owned by SET Secure Electronic Transaction LLC.

Other company, product, and service names may be trademarks or service marks of others.

## Objectives

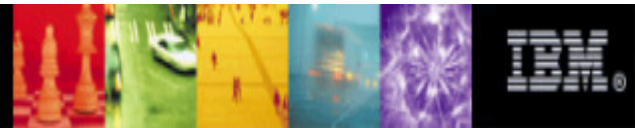
- The objective of this module is to introduce the new feature enhancements in Express Runtime Version 2.1
  - Renamed from Integrated Runtime to Express Runtime
  - Built on the latest market leading middleware components
  - Added functional support for Enterprise JavaBeans (EJB) and Java Messaging Service (JMS)
  - Console for Express Runtime
  - Enhanced wizards for the development and deployment of a solution
  - New development environment
  - Extended platform support
  - Autonomic log and trace analyzer

## Renamed from Integrated Runtime to Express Runtime

- Express Runtime was previously named Integrated Runtime in Version 1.1
- In Version 2.1, it is renamed to **Express Runtime**. The new product offers a comprehensive set of tools to develop and deliver complete business solutions to customers.

**IBM Express Runtime**

Version 2.1



## Built on the latest market leading middleware components

- The middleware components consist of:
  - **IBM HTTP Server 6.0\***
    - Express Runtime contains the full IBM HTTP Server to help you service multiple Web requests and feed them into the application server. The IBM HTTP Server provides a security-rich, standards-based Web environment capable of handling fast, high-bandwidth transactions.
  - **IBM HTTP Plug-in for WebSphere Application Server**
    - Express Runtime also includes Web Server Plugin, which helps automate the configuration of the IBM HTTP Server and the WebSphere Application Server–Express. This automated configuration reduces the time and resources required to establish and configure a secure, fully functional Web environment.

\* IBM HTTP Server is integrated into OS/400 and IBM i5/OS.

 WebSphere software

 DB2. Information Management Software

## Built on the latest market leading middleware components (cont.)

### – **WebSphere Application Server - Express Version 6.0**

- Express Runtime contains the execution environment from WebSphere Application Server Express. It provide you with a standards-based application server that supports the full Java 2 Platform, Enterprise Edition (J2EE) 1.4 programming model and extensions including servlets, JavaServer Pages (JSPs), EJB, JMS, and Web services.
- The software also easily integrates with the relational database (RDB) and other system services, providing cross-organizational views and access to application data and functionality.

### – **DB2 Universal Database (UDB) Express Edition Version 8.2\***

- Express Runtime contains the execution components from DB2 UDB Express. It provides a fully functional, standards-based RDB specifically designed to support midsize business applications.
- As a member of the IBM DB2 family, DB2 UDB Express is compatible with the other members of the DB2 RDB family.

\* DB2 UDB is integrated into OS/400 and i5/OS.

## Added functional support

- **EJB support via WebSphere Application Server - Express 6.0**
- **JMS support via WebSphere Application Server - Express 6.0**

**Note:** The inclusion of the support for both EJB and JMS requires a higher hardware specification for the development machine. Refer to the Express Runtime Information Center for more details.



## Console for Express Runtime V2.1

- An integrated Web-based console provides consolidated and remote administration of the middleware components (WebSphere Application Server - Express, DB2 UDB Express, and IBM HTTP Server).

Welcome System Admin | My Favorites | Edit my profile | Help | Log out

Integrated Solutions Console

Work Items | Status | Settings

View : SystemAdmin

Welcome

Integrated Solutions Console provides a common administration console for multiple products. The table lists the product suites that can be administered through this installation of the console.

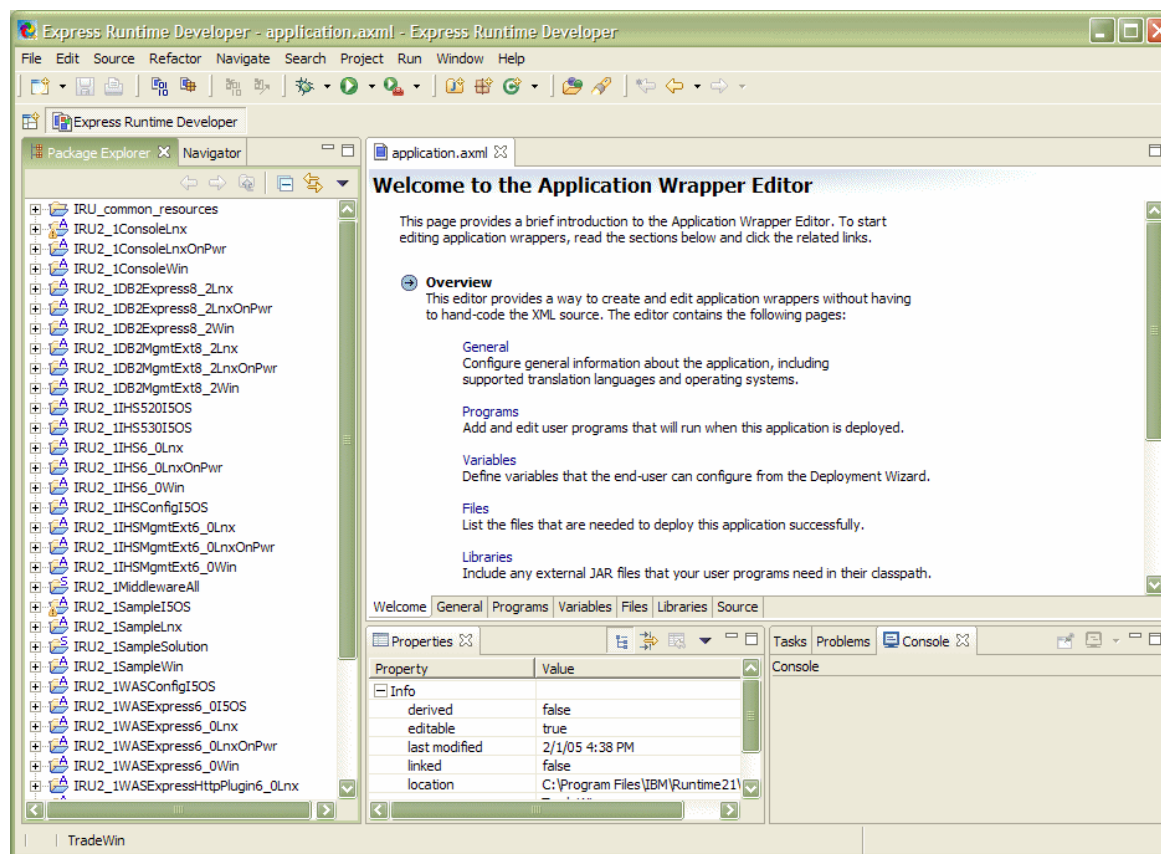
Suite Name	Version
Integrated Solutions Console	5.0
IBM Integrated Runtime: WebSphere Express	1.1
IBM Integrated Runtime: DB2 Express	1.1
IBM Integrated Runtime: IBM HTTP Server	1.1

Page 1 of 1 | Total: 4 | Filtered: 4 | Displayed: 4

[Click here for more information on the Integrated Solutions Console and the installed components.](#)

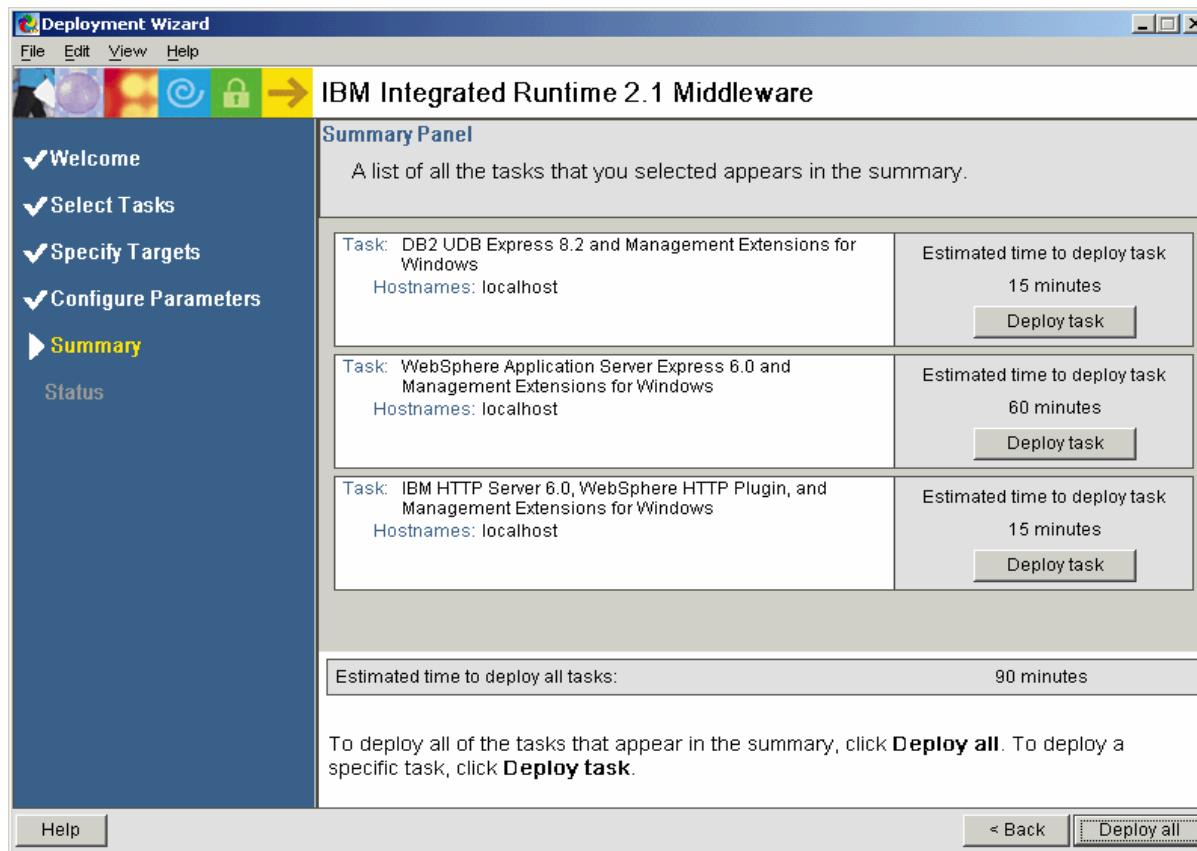
## Enhanced wizards for development and deployment

- The Application Wrapper Editor and Solution Wrapper Editor in the Express Runtime Developer allow you to create and edit the wrappers without having to code the Extensible Markup Language (XML) source.



## Improved Deployment Wizard

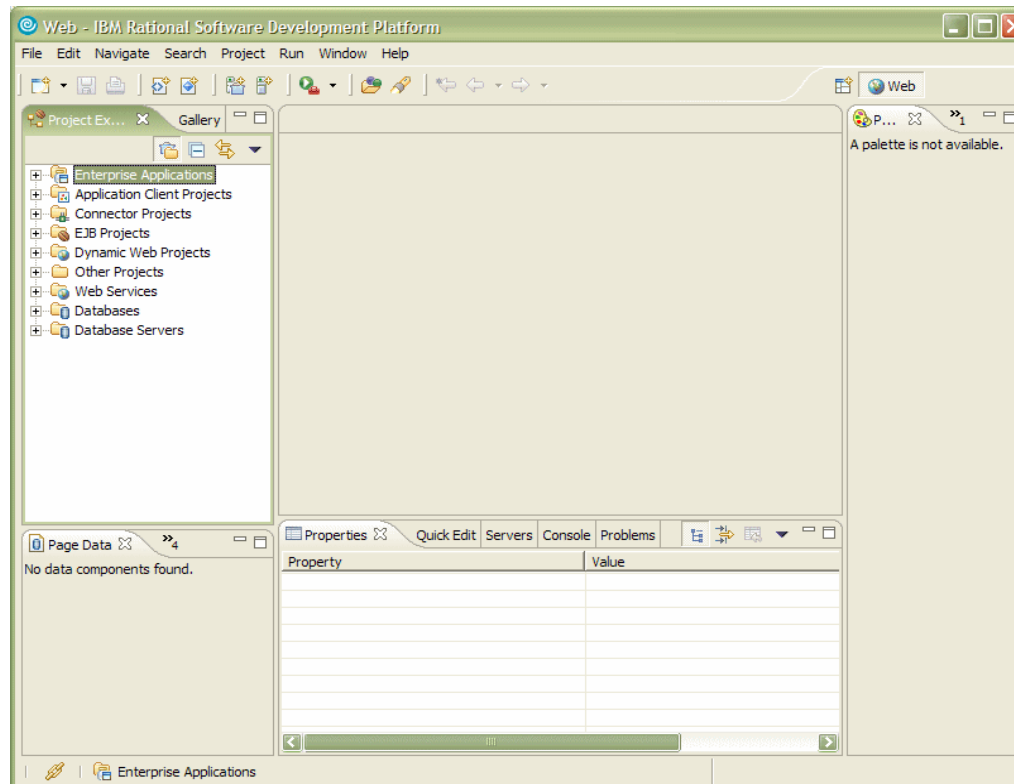
- Previously called the Solution Deployer, the Deployment Wizard provides a step-by-step graphical user interface (GUI) to guide users through the deployment process.



- ✓ Automated deployment of solution components
- ✓ Full integration of Business Partner applications
- ✓ Pre-integrated and preconfigured solution components
- ✓ Remote installation and configuration on target machines of different operating systems
- ✓ Reduces time and cost for deploying a solution

## IBM application development tools

- Two copies of Rational Web Developer are included that allows you to assemble solutions, build, test, and deploy Web services and Java applications.
- Rational Application Developer and other Rational tools are available via the Software Access Catalog.



## Expanded platform support

- **Windows®**
  - Windows XP Professional SP™ 2
  - Windows 2000 Server SP4
  - Windows 2000 Advanced Server SP4
  - Windows 2000 Professional SP3
  - Windows Server 2003, Standard Edition SP1
  - Windows Server 2003, Enterprise Edition SP1
- **Linux™ for POWER (deployment target only)**
  - SUSE LINUX Enterprise Server (SLES) 8.0
  - SUSE LINUX Enterprise Server (SLES) 9.0
  - Red Hat Enterprise Linux AS 3.0
- **Linux™ (Intel™ platforms only)**
  - Red Hat Enterprise Linux (RHEL) 3.0 WS/AS/ES
  - SUSE LINUX Enterprise 8.0
  - SUSE LINUX Enterprise 9.0
  - Red Flag Advanced Server 4.1 (deployment target only)
- **IBM i5/OS or OS/400 V5R3 (deployment target only)**

# Autonomic log and trace analyzer (technology preview in V2.1)

- Provides a single, integrated point of problem determination for multiple software components distributed across a company's network

The screenshot displays the Integrated Solutions Console interface in Microsoft Internet Explorer. The main window shows a tree view of Log Resources under the Navigator. The selected resource is 'MyCorrelation', which contains several log events. The 'Log Events' pane shows a list of events with columns for 'Select', 'severity', and 'msg'. The 'Event Properties' pane shows details for the selected event, including 'Base', 'Extended', 'Situation', 'Source\_Component\_Id', and 'Analysis\_Result'.

Select	severity	msg
<input type="checkbox"/>	10	*GET /WSsamples HTTP/1.1" 302 0
<input type="checkbox"/>	10	*GET /WSsamples/ HTTP/1.1" 302 550
<input type="checkbox"/>	10	*GET /WSsamples/en/index.html HTTP/1.1" 200 1127
<input type="checkbox"/>	10	*GET /WSsamples/en/Menu/Title.html HTTP/1.1" 200 1570
<input type="checkbox"/>	10	*GET /WSsamples/en/Menu/SamplesIntro.html HTTP/1.1" 200 2966
<input type="checkbox"/>	10	*GET /SamplesGallery/GalleryMenu HTTP/1.1" 200 5258
<input type="checkbox"/>	10	*GET /WSsamples/en/SamplesMaster.css HTTP/1.1" 200 11600
<input type="checkbox"/>	10	*GET /WSsamples/scripts/browserStyle.js HTTP/1.1" 200 3565
<input type="checkbox"/>	10	*GET /SamplesGallery/arrow_expanded.gif HTTP/1.1" 200 117
<input type="checkbox"/>	10	*GET /SamplesGallery/spacer.gif HTTP/1.1" 200 819
<input type="checkbox"/>	10	*GET /WSsamples/en/images/samples_name.gif HTTP/1.1" 200 461...

Property	Value
analyzed	false
extensionName	CBCommonBaseEvent
localInstanceId	null
globalInstanceId	N32D06C0091A11D8A200BB38A668DE73
creationTime	2003-01-13 11:44:21.000000-05:00
timeZone	-300
severity	10
priority	0
msg	"GET /WSsamples HTTP/1.1" 302 0
repeatCount	0
elapsedTime	0
sequenceNumber	0
version	1.0.1

✓ Common log format for easy viewing, analysis, and automated problem determination

✓ Future integration with Business Partner administration functions

✓ Common log functions integrated with administration console

✓ Enables partners to remotely access customer logs for servicing

✓ Reduces time and costs for problem determination

## Summary

- New feature enhancements in Express Runtime V2.1 bring significant benefits to end - customers. They further simplify and expedite the development and deployment of a complete business solution.

End of the module