

# BRMS in Action!

## Deploy and Manage Rules-Based Applications

*Presented by ILOG, An IBM Company*

Jan 13, 2009

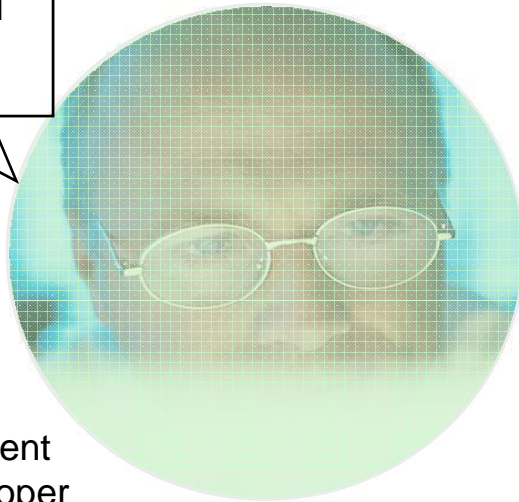
Steve Munsat  
Brett Stineman

- Presentation (45 minutes)
- Q&A
  - Submit a question at any time during the presentation
  - Click 'Q&A' from the panel on the bottom right side of your screen
  - Type a question and click Send
- Link to recorded presentation and slides will be e-mailed to all attendees
- If you have any technical problems during the broadcast, for help call 1.866.779.3239

# Business Rules Management: Varying Needs Across the Organization



I need a comprehensive rules development and maintenance environment



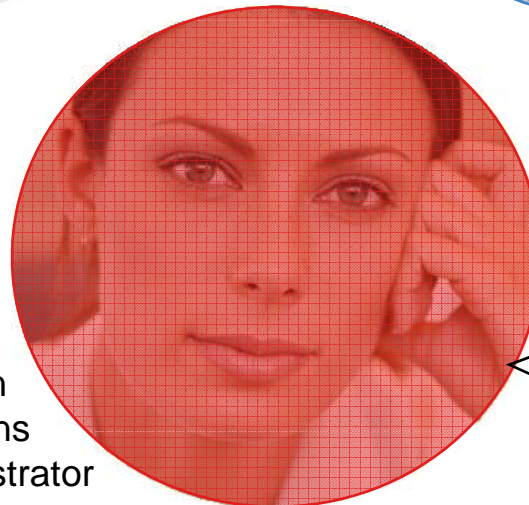
Development  
Rule Developer  
Rule Modeler  
Business Analyst

I need easy, efficient and reliable policy change delivery



Line of Business  
Business Partner  
Policy Manager  
Line of Business Manager

Production  
IT Operations  
System Administrator



I need performance, scalability, monitoring and reliability of operations

# IBM ILOG JRules 6.7 – Comprehensive Environments for Every User

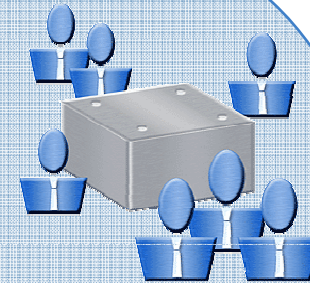


**Rule Studio**

Developers

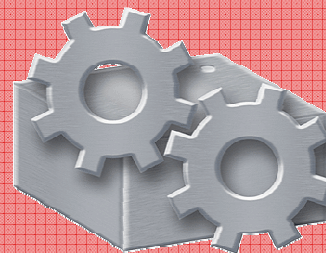


**Rule Scenario Manager**



**Rule Team Server**

Business Users



**Rule Execution Server**

Administrator

# Recap: Session 1



Cindy  
Customer

intellinsure [About us](#) [Contact us](#) [Site map](#) [Home](#)

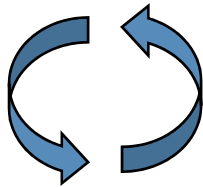
[PRODUCTS & SERVICES](#) [FIND AN AGENT](#) [RESOURCES & TOOLS](#) [MY ACCOUNT](#) [QUOTE MY POLICY](#) [FILE A CLAIM](#)

**et a Quote >> 1.Driver Information - 2.Vehicle Information - 3.Coverage Selection**

**Summary of Vehicles**  
Here is the list of vehicles that will be used to generate your personalized insurance quote. If you want to make any changes, you can use the links on the right hand side of the list.  
**Please enter at least one vehicle before proceeding!**

**Vehicle Information:**

Vehicle Identification Number (VIN):   
Model Year:   
Make:   
Model:   
Annual Mileage:   
How many miles is your vehicle driven to work, one-way?  
Please provide the percentage that this vehicle is driven by driver(s).  
\*\*The percentages should add up to 100%  
Vehicle usage\* for Cindy Davis:   
What type of vehicle is this?   
Does your vehicle have airbags?   
Does your vehicle have antilock brakes?  Yes  No  
Does your vehicle have daytime running lights?  Yes  No



Patrick  
LOB Manager

<http://www.ilog.com/products/businessrules/>

- Focus on *Rule Team Server*
- Business users control definition and maintenance of rules in a guided, web-based environment
- Ability to validate rules meet business objectives before submitting for deployment

**ILOG Rule Team Server** Adam Logout

Home Explore Query Compose Configure Admin Options | About | Help

Explore > Details Pricing - NJ Sedan Surcharge (Action Rule)

**NJ Sedan Surcharge (Action Rule)**

New | Details | Edit | Delete | Copy | Lock | Unlock | Release lock | History | Help

**Content**

```
if
  the type of 'the vehicle' is Sedan
then
  add a $ 16 surcharge to 'the coverage quote', reason: "Sedan surcharge specific for NJ";
```

Properties Attached Items Documentation

Name	NJ Sedan Surcharge
Status	Validated
Locale	en_US
Categories	AutoInsurancePricing
Template	Coverage Dollar Adjustment Te...
Region	/
Expiration Date	None
Effective Date	None
Active	true



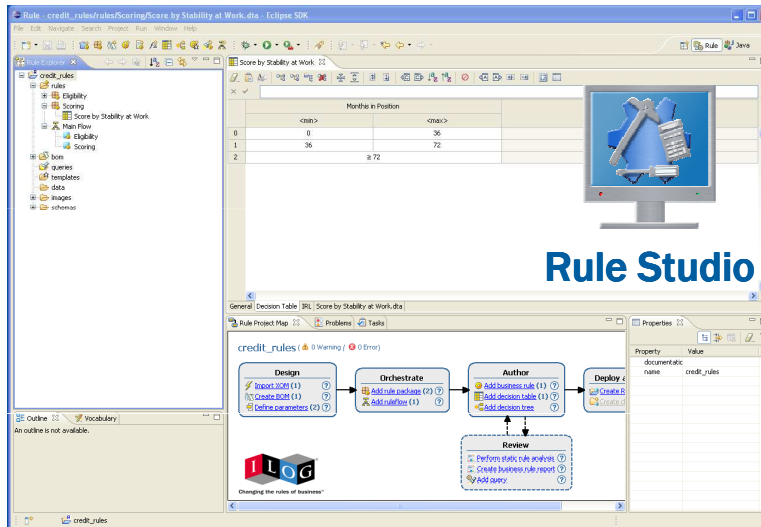
Rule Team Server

# Recap: Session 2

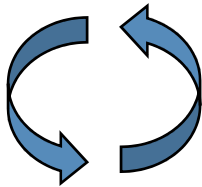
<http://www.ilog.com/products/businessrules/>



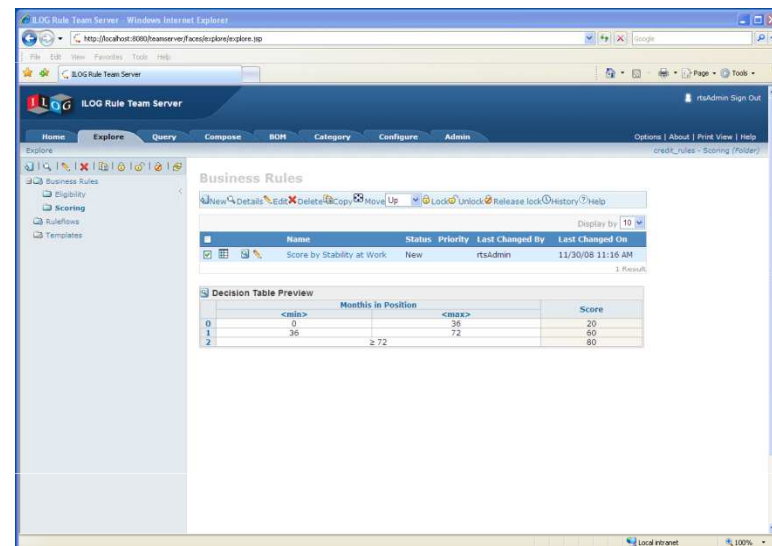
*Vijay  
Developer*



- Focus on *Rule Studio*
- Developers control definition and maintenance of rule projects/applications
- Tools to assist in creation and customization on the business object model
- Ongoing rule maintenance extended to business users



*Patrick  
LOB Manager*

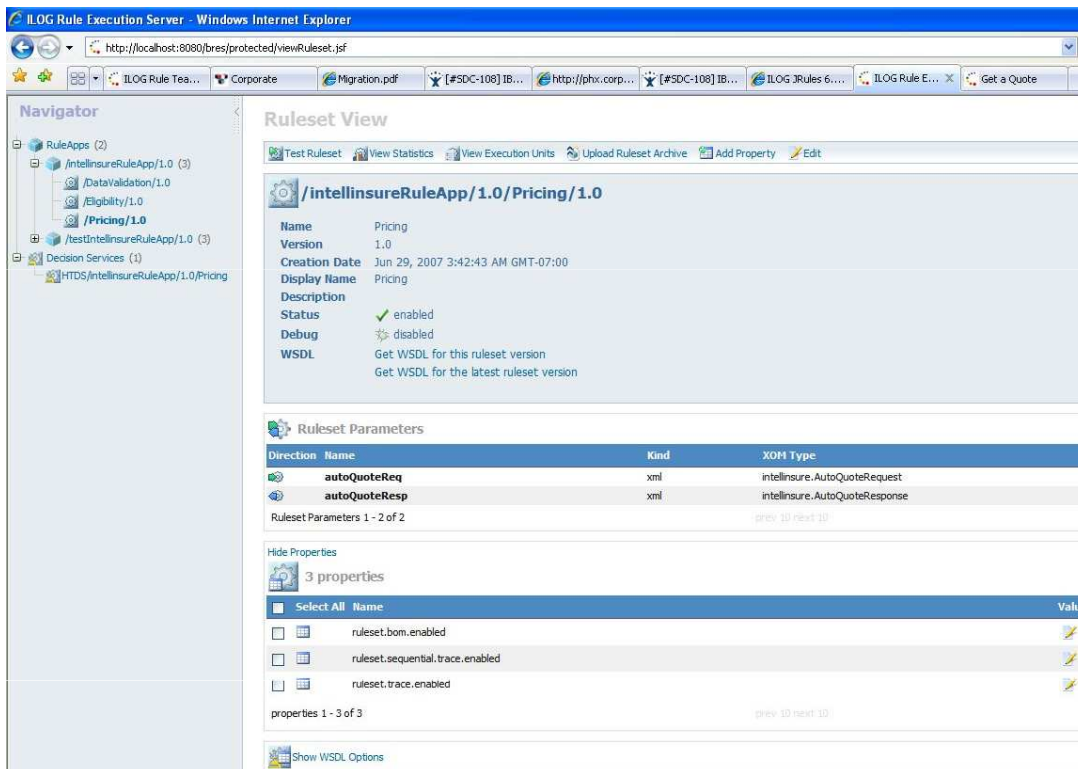




## Rule Execution Server

- Easy to deploy rules
- Scalable
- Auditable
- Secure

*We will observe how rule-based applications are deployed through ILOG Rule Execution Server (RES). Using RES, a systems administrator can easily enable integration with other systems, version updates to the deployed application, and monitor rule execution.*



The screenshot displays the ILOG Rule Execution Server web interface. The main content area shows the 'Ruleset View' for the ruleset '/intellinsureRuleApp/1.0/Pricing/1.0'. The properties listed are:

- Name: Pricing
- Version: 1.0
- Creation Date: Jun 29, 2007 3:42:43 AM GMT-07:00
- Display Name: Pricing
- Description: (empty)
- Status:  enabled
- Debug:  disabled
- WSDL: Get WSDL for this ruleset version, Get WSDL for the latest ruleset version

Below the properties is a 'Ruleset Parameters' table:

Direction	Name	Kind	XOM Type
	autoQuoteReq	xml	intellinsure.AutoQuoteRequest
	autoQuoteResp	xml	intellinsure.AutoQuoteResponse

At the bottom, there are 'Hide Properties' and '3 properties' listed:

Select All	Name	Value
<input type="checkbox"/>	ruleset.bom.enabled	<input type="checkbox"/>
<input type="checkbox"/>	ruleset.sequential.trace.enabled	<input type="checkbox"/>
<input type="checkbox"/>	ruleset.trace.enabled	<input type="checkbox"/>



*Adam  
Administrator*

# With JRules, “Make Change Your Advantage”



- Implement change in a way that is easy, safe and predictable



- Reduce the time and cost required to develop and maintain operational systems that are affected by change



- Provide a way for IT and Business functions to work collaboratively on defining and updating the decision logic that drives operational systems



- Increase the visibility of how systems use and are affected by decision logic



# Coming Up Next: Rule Testing and Simulation



## Rule Scenario Manager

Join Us on Feb 10 and learn how Rule Scenario Mgr:

- Provides capabilities to understand the impact of changes to business rules
- Enables business users to gain visibility into how rule changes will affect the behavior of operational systems

Rule Scenario Manager Console

Home Scenarios Scenario Suites Simulations Reports Admin Print View

Working Folder: Show All Limited Desktop Edition

Scenario Navigator

- Show All (6)
- inputs (0)
- excel (0)
- xml (0)
- tests (0)

Scenario Browser

Name	Folder	Ruleset Path	Description	Action
<input type="checkbox"/> data validation test 1		/testIntellinsureRuleApp/DataValidation	data validation test 1	Edit Launch Download Delete
<input type="checkbox"/> data validation test 2		/testIntellinsureRuleApp/DataValidation	data validation test 2	Edit Launch Download Delete
<input type="checkbox"/> eligibility test 1		/testIntellinsureRuleApp/Eligibility	eligibility test 1	Edit Launch Download Delete
<input type="checkbox"/> eligibility test 2		/testIntellinsureRuleApp/Eligibility	eligibility test 2	Edit Launch Download Delete
<input type="checkbox"/> pricing example 1		/testIntellinsureRuleApp/Pricing	pricing example 1	Edit Launch Download Delete
<input type="checkbox"/> pricing example 2		/testIntellinsureRuleApp/Pricing	pricing example 2	Edit Launch Download Delete

Delete Selected Items

Create a new scenario

# Want to learn more?



- Learn and try at:  
<http://www.ilog.com/brms>
  - Free 6 month trial download
  - White papers
  - Use cases
  - Forums and blogs on business rules
- Contact us at:
  - 800-FOR-ILOG (800-367-4564)
  - via email at [info@ilog.com](mailto:info@ilog.com)
  - on the web at our [Contact Center page](#) for immediate assistance



<http://www.ilog.com/dialog>

# Questions & Answers

*Thank You for Attending!*

*All responses to questions will be posted at:  
[http://www.ilog.com/promotions/brms\\_series/](http://www.ilog.com/promotions/brms_series/)*