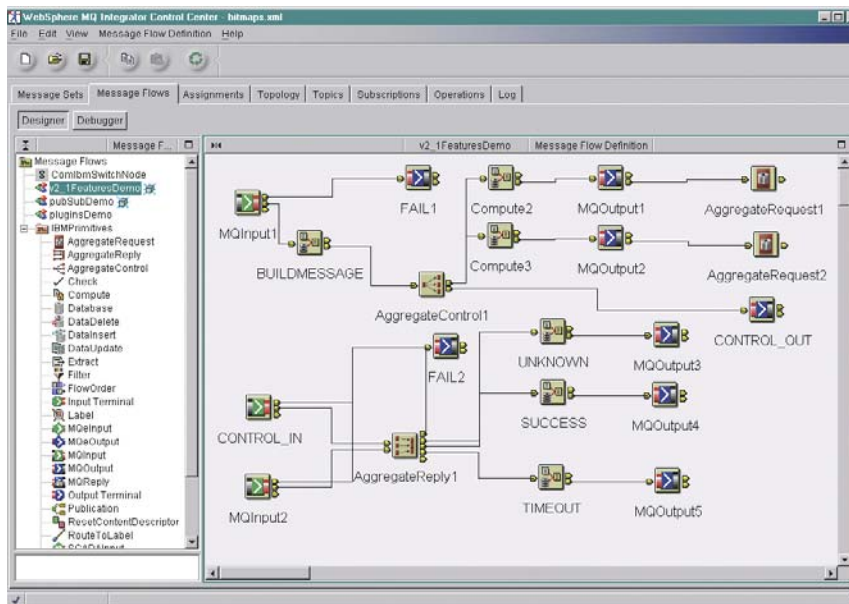


WebSphere MQ Integrator Broker for Multiplatforms, Version 2.1

Highlights

- *Transforms and augments data by applying business-related rules, and distributes data to the applications, databases and people who need it*
- *Provides built-in support for pervasive and telemetry devices*
- *Allows IBM DB2 Universal Database, Oracle 8i and Sybase updates under transactional control*
- *Integrates application and business data using dynamic content and topic-based publish and subscribe functions*
- *Allows end-to-end transaction coordination of application integration with IBM MQSeries control*
- *Offers support for industry-standard messages such as SWIFT and electronic data interchange (EDI)*
- *Employs a graphical development environment to help visualize application flow*
- *Provides an open framework, enabling integration of additional plug-ins and flexible architecture for many types of implementations*



WebSphere MQ Integrator Broker allows you to graphically represent simple and complex data flows, and apply business rules automatically.

To streamline and extend your company's information networks, you need to integrate many different applications on a variety of platforms. To do so, you need an affordable product that can grow with you to meet your needs as your business expands. IBM WebSphere® MQ Integrator Broker—a business integration and business process management (BPM) component of the IBM WebSphere MQ product family—can deliver all the traditional strengths of IBM WebSphere MQ Integrator technology. Message management. Information connectivity. High scalability. Without breaking your IT budget.

A robust information broker

With WebSphere MQ Integrator Broker for Multiplatforms, Version 2.1, IBM has further extended its award-winning WebSphere MQ business integration portfolio to address the needs of small to midsize businesses (SMB), as well as larger enterprises, by including a more flexible pricing structure.

WebSphere MQ Integrator Broker helps you efficiently and effectively manage information within your enterprise and beyond—wherever it is, however it is stored. Whether you are dealing with processes like supply chain management, enterprise resource planning, mergers and acquisitions, straight-through processing or any other business application, you can construct information flows according to your specific business needs by orchestrating the flow of information based on policies or business rules. Data is transformed and routed in the format required by the recipients. And because WebSphere MQ Integrator Broker allows you to consolidate information from disparate applications without modifying it, your business analysts can design, use and manipulate business rules as your business needs dictate, without having to learn a host of new skills.

The open framework of WebSphere MQ Integrator Broker gives you more flexibility and control of your business data—and handles all types of industry-standard message formats.

You can dynamically manipulate and route messages, for example, to augment in-flight data with information from corporate databases. And you can easily combine built-in components with those from third parties. Connect existing business applications to help increase efficiencies, improve profit margins and gain a quicker return on your IT investment.

With WebSphere MQ Integrator Broker, you can implement realtime, application-to-application message transformation and intelligent message routing quickly and easily. You can add, extend or replace applications within information flows. And flows can extend to suppliers, trading partners and Web customers. As information flows and the number of processes increases, WebSphere MQ Integrator Broker can grow to meet your needs.

WebSphere MQ Integrator Broker for Multiplatforms, Version 2.1 at a glance

Hardware requirements

- Any Year-2000-ready hardware that is explicitly compatible and fully capable of running the specified operating system, the corresponding supporting software and associated applications unmodified; original equipment manufacturer responsible to provide a statement of full compatibility among machines
- Any server capable of running one of the listed operating system releases

Software requirements

For message broker, user name server and command assistant

- IBM MQSeries® for AIX, Version 5.2, IBM AIX®, Version 4.3.3 or AIX, Version 5.1 (also known as AIX 5L)
- MQSeries for Sun Solaris operating environment, Version 5.2 and Sun Solaris operating environment, Version 2.8 (requires fix 109147-06 from Sun)
- MQSeries for HP-UX, Version 5.2 and HP-UX, Version 11.0 (with June 2001 General Patch Level or September 2001 Quality Pack)
- MQSeries for Microsoft® Windows NT®, Version 5.2.1 and Windows NT Workstation, Version 4.0 (with Service Pack 6a) or Windows NT Server, Version 4.0 (with SP6a)

For control center and configuration manager

- Windows NT, Version 4.0 with SP6a
- Microsoft Windows® 2000 Professional Server and Advanced Server, with IBM SP2® (Toleration Mode only)

For Java support

- Java™ Runtime Environment (JRE), Version 1.3 for broker
- JRE, Version 1.3 for command assistant
- JRE, Version 1.2.2 for control center
- JRE, Version 1.3 for configuration manager

For database support

- IBM DB2® Universal Database™, Version 6.1 (with Fix Pack 7 or Fix Pack 8), Version 7.1 (with Fix Pack 3 or Fix Pack 4) or Version 7.2 (with general availability, or GA, level or Fix Pack 4)
- Oracle 8i, Release 2, Version 8.1.6 or Oracle 8i, Release 2, Version 8.1.7
- Microsoft SQL Server, Version 6.5 (with SP5a) or Version 7.0 (with SP3)
- Sybase Adaptive Server Enterprise (ASE), Version 12.0 (Patch Update EBF9641 required on HP-UX, Version 11.0)

For database support including transaction support

- DB2 Universal Database, Version 7.1 or Version 6.1 (all platforms)
- Oracle 8i (all platforms)

Program information

- Program number: 5724-D07
 - Available on CD-ROM
-

Business integration building blocks

With the IBM WebSphere MQ family, you can combine business integration products and solutions selectively or build one upon the other to help integrate business processes within and across enterprises. WebSphere MQ Integrator Broker is part of the IBM WebSphere software platform for e-business — a set of integrated, award-winning e-business solutions. No matter where you are in the e-business cycle, the WebSphere software platform can allow you to grow — at the speed the market demands.

Building on this robust platform, you can connect diverse IT environments to maximize your current investments. And leverage existing skills with a full range of business integration solutions from the IBM WebSphere MQ family of products.

For more information

IBM WebSphere MQ Integrator Broker is an integral middleware component of the WebSphere software platform for e-business. To learn more about the WebSphere MQ (formerly known as IBM MQSeries) family of products and about streamlining the management of your e-business processes, visit:

ibm.com/mqseries

Product or solution	Function	Benefit
IBM WebSphere MQ	Messaging integration	Integrate applications across more than 35 platforms with assured once-only message delivery.
IBM WebSphere MQ Everyplace™	Mobile integration	Securely extend your e-business integration to a mobile workforce.
IBM MQSeries Adapter Offering	Application adapters	Rapidly develop adapters to integrate custom applications.
IBM WebSphere Adapters	Packaged application adapters	Utilize prebuilt application adapters to integrate packaged software, like Ariba Buyer and SAP.
IBM WebSphere Adapters and IBM CrossWorlds® Connectors	Packaged application adapters	Utilize prebuilt application adapters to integrate packaged software, like Ariba Buyer and SAP.
IBM WebSphere MQ Event Broker	High-performance message publish and subscribe function	Dynamically distribute messages.
IBM WebSphere MQ Integrator Broker	Message transformation and routing	Cost-effective information exchange between multiple applications.
IBM WebSphere Data Interchange	Electronic Data Interchange (EDI) translation	Translate business information to exchange with trading partners.
IBM CrossWorlds InterChange Server	Business process integration	Coordinate business processes across multiple applications.
IBM CrossWorlds Collaborations	Industry-specific solution templates	Leverage proven industry solutions for fast deployment.
IBM CrossWorlds Trading Partner Integration	Business-to-business (B2B) integration	Automate supply-chain interaction through a gateway for B2B communication.
IBM WebSphere Partner Agreement Manager	B2B integration with RosettaNet	Participate with trading partners in RosettaNet communication.
IBM MQSeries Workflow	Business process management	Manage business processes across multiple applications and people.
HOLOSOFTX BPM Suite	Business process modeling and monitoring	Model, simulate and monitor business processes that execute in the runtime for MQSeries Workflow.
WebSphere Business Integration Offering	A single offering — combination of WebSphere MQ Integrator Broker, MQSeries Workflow and CrossWorlds Interchange Server	Deploy WebSphere business integration products as needed.

To learn more about WebSphere MQ Integrator Broker, contact your IBM marketing representative or visit:

ibm.com/webspheremq/integrator/broker



© Copyright IBM Corporation 2002

IBM United Kingdom Limited
Hursley Park
Winchester
Hampshire SO21 2JN
United Kingdom

Produced in the United States of America
06-02
All Rights Reserved

AIX, CrossWorlds, DB2 Universal Database, the e-business logo, Everyplace, IBM, the IBM logo, MQSeries, SP2 and WebSphere are trademarks or registered trademarks of International Business Machines Corporation of the United States, other countries or both.

Microsoft, Windows and Windows NT are trademarks of Microsoft Corporation in the United States, other countries or both.

Java and all Java-based trademarks and logos are trademarks of Sun Microsystems, Inc. in the United States, other countries or both.

UNIX is a registered trademark of The Open Group in the United States and other countries.

Other company, product and service names may be trademarks or service marks of others.