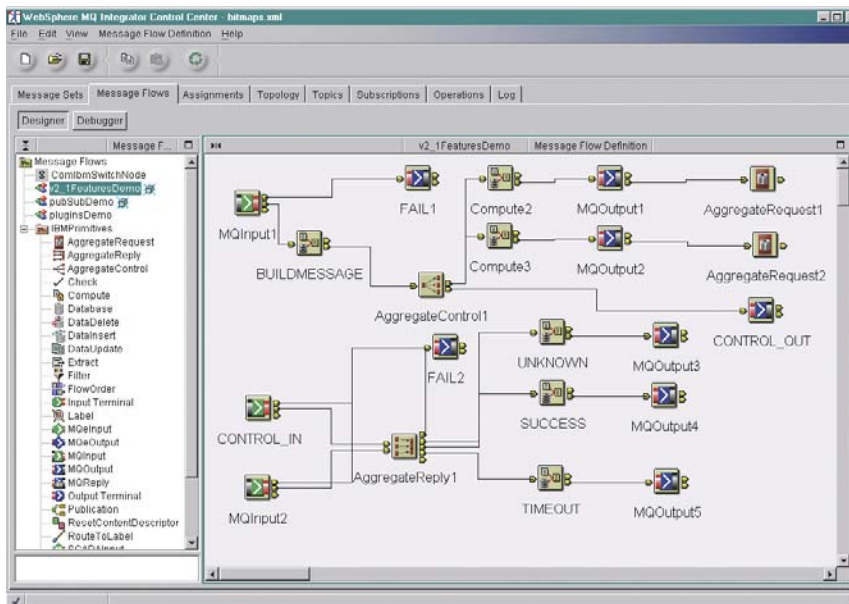


WebSphere MQ Integrator Broker for z/OS, Version 2.1

Highlights

- **Transforms and augments data by applying business-related rules, and distributes data to the applications, databases and people who need it**
- **Integrates application and business data using dynamic content and topic-based publish and subscribe functions**
- **Employs a graphical development environment to help visualize application flow**
- **Provides built-in support for pervasive and telemetry devices**
- **Allows end-to-end transaction coordination of application integration with IBM MQSeries control**
- **Provides an open framework, enabling integration of additional plug-ins and flexible architecture for many types of implementations**
- **Allows IBM DB2 Universal Database updates under transactional control**
- **Offers support for industry-standard messages such as SWIFT and electronic data interchange (EDI)**



WebSphere MQ Integrator Broker for z/OS allows you to graphically represent simple and complex data flows, and apply business rules automatically.

To streamline and extend your company's information networks, you need to integrate many different applications on a variety of platforms. To do so, you need an affordable product that can grow with you to meet your needs as your business expands. IBM WebSphere® MQ Integrator Broker—a business integration and business process management (BPM) component of the IBM WebSphere MQ product family—can deliver all the traditional strengths of IBM WebSphere MQ Integrator technology. Message management. Information connectivity. High scalability. Without breaking your IT budget.

A robust information broker

With WebSphere MQ Integrator Broker for z/OS, Version 2.1, IBM has further extended its award-winning WebSphere MQ business integration portfolio to address the needs of larger enterprises by including a more flexible pricing structure. WebSphere MQ Integrator Broker helps you efficiently

and effectively manage information within your enterprise and beyond—wherever it is, however it is stored. Whether you are dealing with enterprise resource planning, mergers and acquisitions, straight-through processing or any other business application, you can construct information flows according to your specific business needs by orchestrating the flow of information based on policies or business rules. Data is transformed and routed in the format required by the recipients. And because WebSphere MQ Integrator Broker allows you to consolidate information from disparate applications without modifying it, your business analysts can design, use and manipulate business rules as your business needs dictate, without having to learn a host of new skills.

The open framework of WebSphere MQ Integrator Broker gives you more flexibility and control of your business data—and handles all types of industry-standard message formats. You can dynamically manipulate and route messages, for example, to augment in-flight data with information from corporate databases. And you

can easily combine built-in components with those from third parties. Connect existing business applications to help increase efficiencies, improve profit margins and gain a quicker return on your IT investment.

With WebSphere MQ Integrator Broker, you can implement realtime, application-to-application message transformation and intelligent message routing quickly and easily. You can add, extend or replace applications within information flows. And flows can extend to suppliers, trading partners and Web customers. As information flows and the number of processes increases, WebSphere MQ Integrator Broker can grow to meet your needs.

WebSphere MQ Integrator Broker for z/OS, Version 2.1 at a glance

Hardware requirements

- Any Year-2000-ready hardware that is explicitly compatible and fully capable of running the specified operating system, the corresponding supporting software and associated applications unmodified; original equipment manufacturer responsible to provide a statement of full compatibility among machines
- Any server capable of running one of the listed IBM OS/390® or IBM z/OS® releases

Software requirements

For message broker, user name server and command line support

- OS/390 SMP/E, Version 2.8 or higher, z/OS, Version 1, Release 1 or higher or IBM SMP/E for z/OS, Version 3, Release 1 or higher
- Familiarity with Hierarchical File System (HFS)
 - HFS PTFs: UW69626, UW70296, UW70297, OW44631, UW44631, UW74187
 - Recoverable Resource Services (RRS) started and running on the LPAR with RRS PTFs OW49327, UW72071, UW72074, UW72077, UW72080
- SYSLOGD installed
- IBM MQSeries® for OS/390, Version 5.2 (shipped with product)
- IBM DB2® Universal Database™, Version 6.1 at RSU0107 and PUT0107 with APARs PQ45812 and PQ53087 and PTFs UQ38867 and UQ56465 or DB2 Universal Database, Version 7.1 at RSU0107 and PUT0107 with APARs PQ45812 and PQ53087 and PTFs UQ38867 and UQ56465
- Java™ Runtime Environment (JRE), Version 1.3 with PTF

For control center and configuration manager

- Microsoft® Windows NT® Workstation, Version 4.0 with Service Pack 6a
- Windows® 2000 Professional Server and Advanced Server with IBM SP2®
- DB2 Universal Database, Version 6.1 (with Fix Pack 7 or Fix Pack 8), Version 7.1 (with general availability, or GA, level or Fix Pack 3 or Fix Pack 4) or Version 7.2 (with GA level or Fix Pack 4)

For database support including transaction support

- DB2 Universal Database, Version 7.1 or Version 6.1 (all platforms)

Program information

- Program number: 5655-I58
 - Available on 3480 Tape Cartridges
 - A WebSphere MQSeries for Windows NT and Windows 2000 CD-ROM included with the product
-

Business integration building blocks

With the IBM WebSphere MQ family, you can combine business integration products and solutions selectively or build one upon the other to help integrate business processes within and across enterprises. WebSphere MQ Integrator Broker for z/OS is part of the IBM WebSphere software platform for e-business — a set of integrated, award-winning e-business solutions. No matter where you are in the e-business cycle, the WebSphere software platform can allow you to grow — at the speed the market demands.

Building on this robust platform, you can connect diverse IT environments to maximize your current investments. And leverage existing skills with a full range of business integration solutions from the IBM WebSphere MQ family of products.

For more information

IBM WebSphere MQ Integrator Broker for z/OS is an integral middleware component of the WebSphere software platform for e-business. To learn more about the WebSphere MQ (formerly known as IBM MQSeries) family of products and about streamlining the management of your e-business processes, visit:

ibm.com/mqseries

Product or solution	Function	Benefit
IBM WebSphere MQ	Messaging integration	Integrate applications across more than 35 platforms with assured once-only message delivery.
IBM WebSphere MQ Everyplace™	Mobile integration	Securely extend your e-business integration to a mobile workforce.
IBM MQSeries Adapter Offering	Application adapters	Rapidly develop adapters to integrate custom applications.
IBM WebSphere Adapters	Packaged application adapters	Utilize prebuilt application adapters to integrate packaged software, like Ariba Buyer and SAP.
IBM WebSphere Adapters and IBM CrossWorlds® Connectors	Packaged application adapters	Utilize prebuilt application adapters to integrate packaged software, like Ariba Buyer and SAP.
IBM WebSphere MQ Event Broker	High-performance message publish and subscribe function	Dynamically distribute messages.
IBM WebSphere MQ Integrator Broker	Message transformation and routing	Cost-effective information exchange between multiple applications.
IBM WebSphere Data Interchange	Electronic Data Interchange (EDI) translation	Translate business information to exchange with trading partners.
IBM CrossWorlds InterChange Server	Business process integration	Coordinate business processes across multiple applications.
IBM CrossWorlds Collaborations	Industry-specific solution templates	Leverage proven industry solutions for fast deployment.
IBM CrossWorlds Trading Partner Integration	Business-to-business (B2B) integration	Automate supply-chain interaction through a gateway for B2B communication.
IBM WebSphere Partner Agreement Manager	B2B integration with RosettaNet	Participate with trading partners in RosettaNet communication.
IBM MQSeries Workflow	Business process management	Manage business processes across multiple applications and people.
HOLOSOFTX BPM Suite	Business process modeling and monitoring	Model, simulate and monitor business processes that execute in the runtime for MQSeries Workflow.
WebSphere Business Integration Offering	A single offering — combination of WebSphere MQ Integrator Broker, MQSeries Workflow and CrossWorlds Interchange Server	Deploy WebSphere business integration products as needed.

To learn more about WebSphere MQ Integrator Broker for z/OS, contact your IBM marketing representative or visit:

ibm.com/webspheremq/integrator/broker



© Copyright IBM Corporation 2002

IBM United Kingdom Limited
Hursley Park
Winchester
Hampshire S021 2JN
United Kingdom

Produced in the United States of America
06-02
All Rights Reserved

CrossWorlds, DB2 Universal Database, the e-business logo, Everyplace, IBM, the IBM logo, MQSeries, OS/390, SP2, WebSphere and z/OS are trademarks or registered trademarks of International Business Machines Corporation of the United States, other countries or both.

Microsoft, Windows and Windows NT are trademarks of Microsoft Corporation in the United States, other countries or both.

Java and all Java-based trademarks and logos are trademarks of Sun Microsystems, Inc. in the United States, other countries or both.

Other company, product and service names may be trademarks or service marks of others.