

WebSphere Business Integration Server
Express and Express Plus



Quick Start Guide

Version 4.3

WebSphere Business Integration Server
Express and Express Plus



Quick Start Guide

Version 4.3

Note!

Before using this information and the product it supports, read the information in "Notices" on page 9.

14May2004

This edition of this document applies to IBM WebSphere Business Integration Server Express, version, 4.3, IBM WebSphere Business Integration Server Express Plus, version 4.3, and to all subsequent releases and modifications until otherwise indicated in new editions.

To send us your comments about this document, e-mail doc-comments@us.ibm.com. We look forward to hearing from you.

When you send information to IBM, you grant IBM a nonexclusive right to use or distribute the information in any way it believes appropriate without incurring any obligation to you.

© **Copyright International Business Machines Corporation 2004. All rights reserved.**

US Government Users Restricted Rights – Use, duplication or disclosure restricted by GSA ADP Schedule Contract with IBM Corp.

Contents

About this document	v
Audience	v
Related documents	v
Conventions used in this guide	vi
New in this release.	vii
Quick Start Guide	1
Contacting product support	1
Validating your system after installation	1
Next steps	7
Notices	9
Programming interface information	10
Trademarks and service marks	11

About this document

The products IBM^(R) WebSphere^(R) Business Integration Server Express and IBM^(R) WebSphere^(R) Business Integration Server Express Plus consist of the following components: InterChange Server Express, the associated Toolset Express, CollaborationFoundation, and a set of software integration adapters. The tools in Toolset Express help you to create, modify, and manage business processes. You can choose from among the prepackaged adapters for your business processes that span applications. The standard processes template, CollaborationFoundation, allows you to quickly create customized processes.

The SystemTest samples are provided as a means of validating the IBM WebSphere Business Integration Server Express V4.3 and IBM WebSphere Business Integration Server Express Plus V4.3 systems after installation.

This document describes how to use these samples to validate your system.

Except where noted, all the information in this guide applies to both IBM WebSphere Business Integration Server Express and IBM WebSphere Business Integration Server Express Plus. The term WebSphere Business Integration Server Express and its variants refer to both products.

Audience

This document is for consultants and system administrators who install, deploy, and administer WebSphere Business Integration Express.

Related documents

The complete set of documentation available with this product describes the features and components common to all WebSphere Business Integration Server Express and WebSphere Business Integration Server Express Plus installations, and includes reference material on specific components.

You can install the documentation on your machine or read it directly online at the following site: <http://www.ibm.com/websphere/wbiserver/express/infocenter>

After completing the instructions provided in this document for validating your product installation, refer to the documents listed below to learn more about these specific tasks.

- For information about the IBM WebSphere Business Integration Server Express and Express Plus products and the steps necessary to implement a solution, refer to the *System Implementation Guide*.
- For information about installing the optional Adapter or Collaboration Capacity Packs, available only with the IBM WebSphere Business Integration Server Express Plus product, refer to the *WebSphere Business Integration Server Express Installation Guide*.
- For information about performing the final configuration tasks for your implementation, including configuration of the adapters installed with IBM WebSphere Business Integration Server Express and Express Plus and the optional Adapter Capacity Pack, refer to the *System Implementation Guide*.

For your convenience, the reference list shown above is also provided at the end of this document in the section entitled "Next steps."

Notes:

1. In the SystemTest samples, the adapters have been configured to use IDL as the transport mechanism. These samples do not test an implementation using JMS as the transport mechanism. For information about configuring adapters to use JMS as the transport mechanism, see the System Implementation Guide.
2. Important information about this product may be available in Technical Support Technotes and Flashes issued after this document was published. These can be found on the WebSphere Business Integration Support Web site, <http://www.ibm.com/software/integration/websphere/support/>. Select the component area of interest and browse the Technotes and Flashes sections. The site contains simple directions for downloading, installing, and viewing the documentation.

Conventions used in this guide

This document uses these abbreviations and style conventions:

- Abbreviations are used for some words and some variables in syntax statements. These abbreviations are used:

BO* = business object (prefix to a BO file)	ICS = InterChange Server Express
ObjectName* = variable name for business object	

* BO is the prefix to a BO file; the term BO generally refers to the business object definition text files. *ObjectName* refers to the variables used to represent business objects.

- The term "camelcase," used in this document, refers to a style of capitalization whereby the spaces between words are eliminated, and the first letter of each word (or more than one letter if using acronyms) is capitalized. For example, the term SystemTest is in camelcase.

In addition, this document uses some or all of the following typographical conventions:

Bold	Indicates a literal value, such as a command name, filename, information that you type, or information that the system prints on the screen.
<i>italic</i>	Indicates a variable name, a cross-reference, or a new term the first time it appears.
blue outline	A blue outline, which is visible only when you view the manual online, indicates a cross-reference hyperlink. Click inside the outline to jump to the object of the reference.
{ }	In a syntax line, curly braces surround a set of options from which you must choose one and only one.
[]	In a syntax line, square brackets surround an optional parameter.
...	In a syntax line, ellipses indicate a repetition of the previous parameter. For example, option[,...] means that you can enter multiple, comma-separated options.
< >	In a naming convention, angle brackets surround individual elements of a name to distinguish them from each other, as in <server_name><connector_name>tmp.log.

/, \	In this document, backslashes (\) are used as the convention for directory paths. All WebSphere Business Integration Server Express system product pathnames are relative to the directory where the product is installed on your system.
%text% and \$text	Text within percent (%) signs indicates the value of the Windows text system variable or user variable.
ProductDir	Represents the directory where the product is installed.

New in this release

This is the first release of this guide.

Quick Start Guide

This document describes how to use the SystemTest samples to validate the system after installing the IBM^(R) WebSphere^(R) Integration Server Express V4.3 or the IBM^(R) WebSphere^(R) Integration Server Express Plus V4.3 product.

Note: This document assumes that you have successfully installed the WebSphere Business Integration Server Express or Express Plus product, selected and installed Samples from the feature screen during installation to install the System Test samples, and registered InterChange Server Express using System Manager. If you have not yet installed the WebSphere Business Integration Server Express or Express Plus product, the System Test samples, and registered InterChange Server Express, see *WebSphere Business Integration Server Express Installation Guide*

Except where noted, all the information in this guide applies to both IBM WebSphere Business Integration Server Express and IBM WebSphere Business Integration Server Express Plus. The term *WebSphere Business Integration Server Express* and its variants refer to both products.

This chapter includes the following sections:

- “Contacting product support”
- “Validating your system after installation”
- “Starting InterChange Server Express” on page 2
- “Starting System Manager” on page 2
- “Verifying that all necessary components are working correctly” on page 2
- “Using Test Connector to view business data” on page 2
- “Using Test Connector with the SystemTest interface” on page 6

Contacting product support

For support issues relating to the WebSphere Business Integration Server Express product, contact IBM Customer Support either online or by telephone:

- Visit the IBM WebSphere Business Integration Server Express technical support Web site, <http://www.ibm.com/software/integration/websphere/support/>.
- Contact IBM WebSphere Business Integration Server Express support by telephone within the USA or Canada at 1-800-IBM-SERV. For all other countries, go to <http://techsupport.services.ibm.com/guides/contacts.html> to find the correct telephone number for your geographic location.

Validating your system after installation

This section provides a high-level overview of the procedures required to validate your system after you have successfully installed the IBM WebSphere Business Integration Server Express product.

- “Starting InterChange Server Express” on page 2
- “Starting System Manager” on page 2
- “Verifying that all necessary components are working correctly” on page 2
- “Using Test Connector to view business data” on page 2

- “Using Test Connector with the SystemTest interface” on page 6

Note: If you have already started InterChange Server Express and System Manager, begin with the section “Verifying that all necessary components are working correctly.”

Starting InterChange Server Express

To start InterChange Server Express, click **Start > Programs > IBM WebSphere Business Integration Express > InterChange Server Express**. InterChange Server Express automatically starts the Persistent Naming server.

Starting System Manager

After you have started InterChange Server Express, start WebSphere Workbench and System Manager.

Click **Start > Programs > IBM WebSphere Business Integration Express > Toolset Express > Administrative > System Manager**.

For information about System Manager, see the *System Implementation Guide*.

Verifying that all necessary components are working correctly

After starting System Manager, verify that all the connector and collaboration objects are working correctly.

1. Expand the **WebSphereICS** server instance.
2. Expand the **Connectors** folder. Each active connector has a *green-arrow icon* displayed beside it. Verify that each of the following connectors are active (marked by a green-arrow icon):
 - DestinationConnector
 - SourceConnector
 - SystemTestConnector
3. If a connector is not active, right-click it, and then click **Start connector_name** in the context menu.
4. Expand the **Collaboration Objects** folder. Each active collaboration object has a green-arrow icon displayed beside it. Verify that each of the following collaboration objects are active (marked by a green-arrow icon):
 - CustomerSynchronization_SourceToDestination
 - SystemTestObject
5. If a connector is not active, right-click it, and then click **Start collaboration_name** in the context menu.

Using Test Connector to view business data

Test Connector is a graphical interface that presents the structure of a business object in a tabular view. Connectors exchange data with applications through business logic and so do not have a graphical interface. Test Connector emulates connectors using a graphical view, making it easier to understand the role of a connector in an interface, while removing the complexity of running actual connectors.

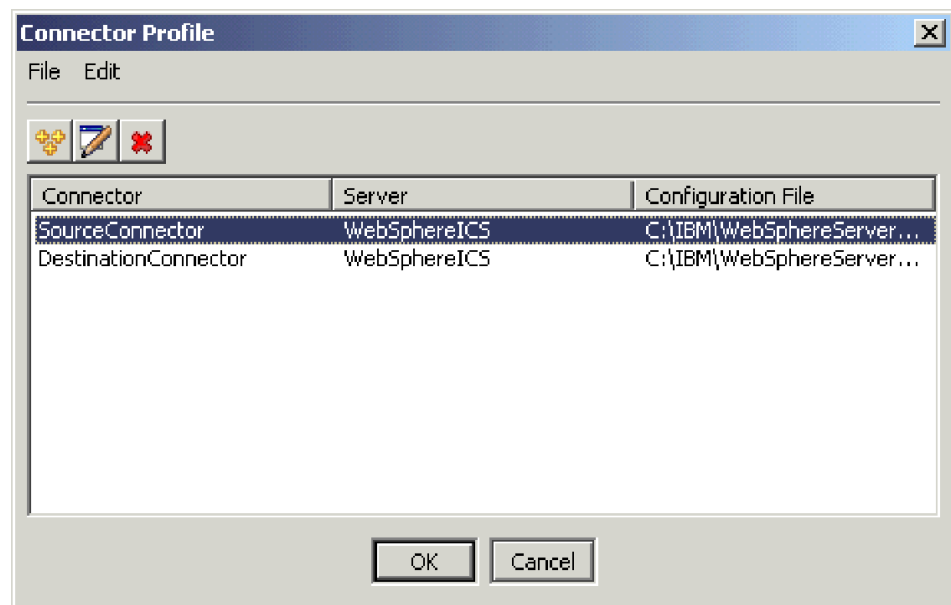
The CustomerSynchronization_SourceToDestination collaboration object tests the IBM WebSphere Business Integration Server Express system by sending business objects from one instance of Test Connector to another. The Customer business

object is *flat* rather than hierarchical. It does not contain any other business objects. The CustomerSynchronization collaboration template sends business objects, sent by the source connector in the interface, to the destination connector, and does not apply any noteworthy business logic. The SourceConnector and DestinationConnector definitions represent the server-side component of a connector. They do not represent executable connectors. These definitions are sufficient to validate the subsystems of IBM WebSphere Business Integration Server Express.

The following instructions use Test Connector to emulate connectors exchanging data through the WebSphere Business Integration Server Express system.

Note: For the purpose of these instructions, it is assumed that you have started InterChange Server Express and System Manager, and verified that the test connectors and collaboration objects are active.

1. Click **Start > Programs > IBM WebSphere Business Integration Express > Development > Test Connector** to start Test Connector.
2. Click **File > Create/Select Profile** in the Test Connector menu bar.
3. Click to select the **SourceConnector** profile, and then click **OK**. The Connector Profile dialog is shown below with the SourceConnector profile selected.

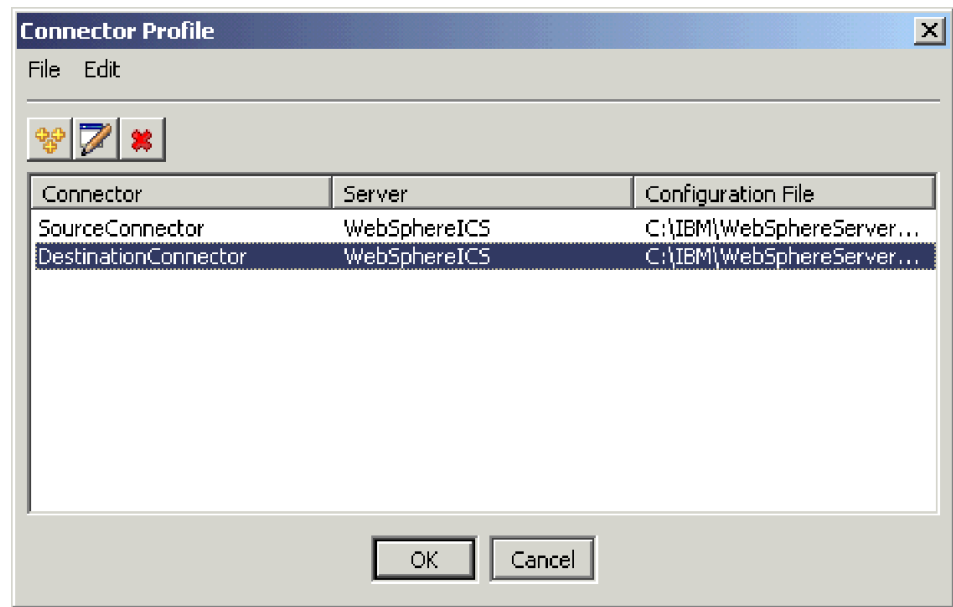


4. Click **File > Connect** in the Test Connector menu bar. This action connects the current instance of Test Connector with the SourceConnector profile loaded to the server.

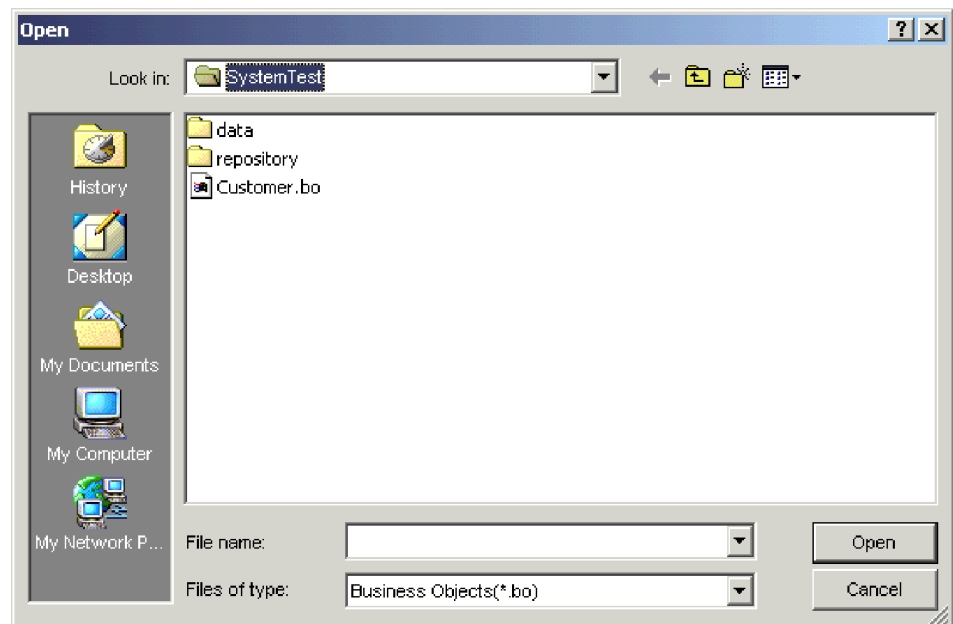
Note: Steps 1 through 4, shown above, launched the first instance of Test Connector and specified the SourceConnector profile. Steps 5 through 8, shown below, launch a second instance of Test Connector and specify the DestinationConnector profile.

5. Click **Start > Programs > IBM WebSphere Business Integration Express > Toolset Express > Development > Test Connector** to start Test Connector.
6. Click **File > Create/Select Profile** in the Test Connector menu bar.
7. Click to select the **DestinationConnector** profile, and then click **OK**. The Connector Profile dialog is shown below with the DestinationConnector

profile selected.

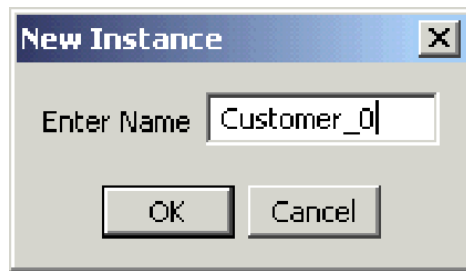


8. Click **File > Connect** in the Test Connector menu bar. This action connects the current instance of Test Connector with the DestinationConnector profile loaded to the server.
9. In the instance of Test Connector that has the DestinationConnector profile loaded, click **Edit > Load BO** in the menu bar.
10. In the Look in list within the Open dialog, select **\ProductDir \Samples\SystemTest**, and then click to select the **Customer.bo** folder. The Open dialog is shown below.



11. Click **Open** to open the Customer.bo file and display the New Instance dialog.
12. Type **Customer_0** in the Enter Name field, and then click **OK**. The new Instance dialog, with Customer_0 typed in the Enter Name field, is shown

below.



13. Note the values, for example **FirstName**, **String**, **Tom**, in the fields of the Customer business object, as shown below.

Name	Type	Value
CustomerId	String	1000324
FirstName	String	Tom
LastName	String	Barrymore
Status	String	Active
CreatedOnD...	String	10/09/2003
ObjectEventId	String	SourceConne...

-
14. Click **Request > Send** in the menu bar to send the business object.
 15. Give *focus* to the instance of Test Connector that has the DestinationConnector profile loaded. If the BO Request List pane contains **Customer.Create**, as shown below, the Customer business object has been received.



- Double-click the **Customer.create** event to view it as a response business object. The Response BO dialog is shown below.

Name	Type	Value
CustomerId	String	1000324
FirstName	String	Tom
LastName	String	Barrymore
Status	String	Active
CreatedOnD...	String	10/09/2003
ObjectEventId	String	SourceConne...

- Optional: Double-click in each of the fields to edit the data in the way that a destination application typically assigns its own unique values to events that it processes. Click **Ok** when you have finished editing the fields.
- Click **Request > Reply > Success** in the menu bar to simulate the destination application successfully processing the business object and returning it to InterChange Server Express.
- When you have finished sending and replying to events, click **File > Exit** in the Test Connector menu bar, and then click **Yes** when prompted to shut down Test Connector.

Using Test Connector with the SystemTest interface

The following instructions use Test Connector to process text files through a pair of interfaces in the system.

Note: For the purpose of these instructions, it is assumed that you have started InterChange Server Express and System Manager, and verified that the test connectors and collaboration objects are active.

- Click **Start > Programs > IBM WebSphere Business Integration Express > Toolset Express > Development > Test Connector** to start Test Connector.
- Click **File > Create/Select Profile** in the Test Connector menu bar.
- Select the SystemTestConnector profile, and then click **OK**.
- Click **File > Connect** in the Test Connector menu bar.
- Click **Edit > Load BO** in the Test Connector menu bar.
- In the **Open** dialog, select the **\ProductDir \Samples\SystemTest** folder, and then open the file named **Employee.bo**.
- In the **New Instance** dialog, type **Employee_0** in the Enter Name field, and then click **OK**.
- Note the values specified for the fields of the Employee business object.
- Click **Request > Send** in the menu bar to send the business object.
- Note that the **BO Request List** pane shows that the Employee business object has been received.

11. Double-click the **Employee.create** event to view it as a response business object.
12. Optional: Double-click in each of the fields to edit the data, and then click **OK** when you are finished.
13. Click **Request > Reply > Success** in the menu bar to simulate the destination application successfully processing the business object and returning it to InterChange Server Express.
14. Repeat steps 9 through 13 to send more events. The interface is designed to fail approximately one of out of every sixteen events to provide you with a supply of failed events that you can use to learn about Flow Manager. If an event you send does not appear in the BO Request List pane, the interface has failed to process it. For information about Flow Manager, see the *System Implementation Guide*.
15. When you have finished sending and replying to events, click **File > Exit** in the Test Connector menu bar, and then click **Yes** when prompted to shut down Test Connector.

Next steps

After completing the instructions provided in this document to validate your product installation, see the documents listed below to learn more about these specific tasks.

- For information about the IBM WebSphere Business Integration Server Express and Express Plus products and the steps necessary to implement a solution, see the *System Implementation Guide*.
- For information about installing the optional Adapter or Collaboration Capacity Packs, available only with the IBM WebSphere Business Integration Server Express Plus product, see the *WebSphere Business Integration Server Express Installation Guide*.
- For information about performing the final configuration tasks for your implementation, including configuration of the adapters installed with IBM WebSphere Business Integration Server Express and Express Plus and the optional Adapter Capacity Pack, see the *System Implementation Guide*.

Notices

IBM may not offer the products, services, or features discussed in this document in all countries. Consult your local IBM representative for information on the products and services currently available in your area. Any reference to an IBM product, program, or service is not intended to state or imply that only that IBM product, program, or service may be used. Any functionally equivalent product, program, or service that does not infringe any IBM intellectual property right may be used instead. However, it is the user's responsibility to evaluate and verify the operation of any non-IBM product, program, or service.

IBM may have patents or pending patent applications covering subject matter described in this document. The furnishing of this document does not give you any license to these patents. You can send license inquiries, in writing, to:

IBM Director of Licensing
IBM Corporation
North Castle Drive
Armonk, NY 10504-1785
U.S.A.

The following paragraph does not apply to the United Kingdom or any other country where such provisions are inconsistent with local law:

INTERNATIONAL BUSINESS MACHINES CORPORATION PROVIDES THIS PUBLICATION "AS IS" WITHOUT WARRANTY OF ANY KIND, EITHER EXPRESS OR IMPLIED, INCLUDING, BUT NOT LIMITED TO, THE IMPLIED WARRANTIES OF NON-INFRINGEMENT, MERCHANTABILITY OR FITNESS FOR A PARTICULAR PURPOSE. Some states do not allow disclaimer of express or implied warranties in certain transactions, therefore, this statement may not apply to you.

This information could include technical inaccuracies or typographical errors. Changes are periodically made to the information herein; these changes will be incorporated in new editions of the publication. IBM may make improvements and/or changes in the product(s) and/or program(s) described in this publication at any time without notice.

Any references in this information to non-IBM Web sites are provided for convenience only and do not in any manner serve as an endorsement of those Web sites. The materials at those Web sites are not part of the materials for this IBM product and use of those Web sites is at your own risk.

IBM may use or distribute any of the information you supply in any way it believes appropriate without incurring any obligation to you.

Licensees of this program who wish to have information about it for the purpose of enabling: (i) the exchange of information between independently created programs and other programs (including this one) and (ii) the mutual use of the information which has been exchanged, should contact:

IBM Burlingame Laboratory Director
IBM Burlingame Laboratory
577 Airport Blvd., Suite 800

Burlingame, CA 94010
U.S.A

Such information may be available, subject to appropriate terms and conditions, including in some cases, payment of a fee.

The licensed program described in this document and all licensed material available for it are provided by IBM under terms of the IBM Customer Agreement, IBM International Program License Agreement, or any equivalent agreement between us.

Any performance data contained herein was determined in a controlled environment. Therefore, the results obtained in other operating environments may vary significantly. Some measurements may have been made on development-level systems and there is no guarantee that these measurements will be the same on generally available systems. Furthermore, some measurement may have been estimated through extrapolation. Actual results may vary. Users of this document should verify the applicable data for their specific environment.

Information concerning non-IBM products was obtained from the suppliers of those products, their published announcements or other publicly available sources. IBM has not necessarily tested those products and cannot confirm the accuracy of performance, compatibility or any other claims related to non-IBM products. Questions on the capabilities of non-IBM products should be addressed to the suppliers of those products.

This information may contain examples of data and reports used in daily business operations. To illustrate them as completely as possible, the examples may include the names of individuals, companies, brands, and products. All of these names are fictitious and any similarity to the names and addresses used by an actual business enterprise is entirely coincidental.

All statements regarding IBM's future direction or intent are subject to change or withdrawal without notice, and represent goals and objectives only.

COPYRIGHT LICENSE

This information may contain sample application programs in source language, which illustrates programming techniques on various operating platforms. You may copy, modify, and distribute these sample programs in any form without payment to IBM, for the purposes of developing, using, marketing or distributing application programs conforming to the application programming interface for the operating platform for which the sample programs are written. These examples have not been thoroughly tested under all conditions. IBM, therefore, cannot guarantee or imply reliability, serviceability, or function of these programs.

Programming interface information

Programming interface information, if provided, is intended to help you create application software using this program.

General-use programming interfaces allow you to write application software that obtain the services of this program's tools.

However, this information may also contain diagnosis, modification, and tuning information. Diagnosis, modification and tuning information is provided to help you debug your application software.

Warning: Do not use this diagnosis, modification, and tuning information as a programming interface because it is subject to change.

Trademarks and service marks

The following terms are trademarks or registered trademarks of International Business Machines Corporation in the United States or other countries, or both:

IBM
the IBM logo
AIX
CrossWorlds
DB2
DB2 Universal Database
Domino
Lotus
Lotus Notes
MQIntegrator
MQSeries
Tivoli
WebSphere

Microsoft, Windows, Windows NT, and the Windows logo are trademarks of Microsoft Corporation in the United States, other countries, or both.

MMX, Pentium, and ProShare are trademarks or registered trademarks of Intel Corporation in the United States, other countries, or both.

Java and all Java-based trademarks are trademarks of Sun Microsystems, Inc. in the United States, other countries, or both.

Other company, product or service names may be trademarks or service marks of others.

System Manager includes software developed by the Eclipse Project (<http://www.eclipse.org/>)



WebSphere Business Integration Server Express V4.3 and WebSphere Business Integration Server Express Plus V4.3



Printed in USA