

IBM WebSphere Business Integration Express for  
Item Synchronization



# Installing WebSphere Business Integration Express for Item Synchronization

*Version 4.3*



IBM WebSphere Business Integration Express for  
Item Synchronization



# Installing WebSphere Business Integration Express for Item Synchronization

*Version 4.3*

**Note!**

Before using this information and the product it supports, read the information in "Notices" on page 19.

**10October2003**

This edition of this document applies to IBM WebSphere Business Integration Express for Item Synchronization, version 4.3, and to all subsequent releases and modifications until otherwise indicated in new editions.

To send us your comments about this document, e-mail [doc-comments@us.ibm.com](mailto:doc-comments@us.ibm.com). We look forward to hearing from you.

When you send information to IBM, you grant IBM a nonexclusive right to use or distribute the information in any way it believes appropriate without incurring any obligation to you.

© Copyright International Business Machines Corporation 2003. All rights reserved.

US Government Users Restricted Rights – Use, duplication or disclosure restricted by GSA ADP Schedule Contract with IBM Corp.

---

# Contents

|  |            |
|--|------------|
| <b>About this document</b> . . . . .   | <b>v</b>   |
| Audience . . . . .   | v          |
| Related documents . . . . .  | v          |
| Typographic conventions . . . . .  | v          |
| <b>New in this release</b> . . . . .   | <b>vii</b> |
| <b>Chapter 1. Installation requirements</b> . . . . .  | <b>1</b>   |
| Hardware requirements. . . . .   | 1          |
| Software requirements . . . . .  | 1          |
| Database requirements . . . . .  | 3          |
| <b>Chapter 2. Using the Launchpad</b> . . . . .  | <b>5</b>   |
| Installation overview . . . . .  | 5          |
| Getting started. . . . .   | 5          |
| Software prerequisites . . . . .   | 6          |
| Database setup . . . . .   | 7          |
| <b>Chapter 3. Installing WebSphere Business Integration Express for Item Synchronization</b> . . . . . | <b>9</b>   |
| Installing IBM WebSphere Business Integration Express for Item Synchronization software . . . . .      | 9          |
| WebSphere Business Integration Express for Item Synchronization files and directories . . . . .        | 12         |
| Uninstalling IBM WebSphere Business Integration Express for Item Synchronization . . . . .             | 13         |
| <b>Chapter 4. Installing and configuring Web-based System Monitor</b> . . . . .                        | <b>15</b>  |
| Installing Web-based System Monitor. . . . .   | 15         |
| Configuring Tomcat to use Web-based System Monitor. . . . .  | 16         |
| <b>Notices</b> . . . . .   | <b>19</b>  |
| Programming interface information . . . . .  | 20         |
| Trademarks and service marks . . . . .   | 20         |



---

## About this document

The IBM<sup>(R)</sup> WebSphere<sup>(R)</sup> Business Integration Express for Item Synchronization product includes InterChange Server Express, the associated Toolset Express product, the Item Synchronization collaboration, and a set of software integration adapters. Together they provide business process integration and connectivity among leading e-business technologies and enterprise applications as well as integration with the UCCnet GLOBALregistry.

This document describes how to install and set up the IBM WebSphere Business Integration Express for Item Synchronization system.

---

## Audience

This document is for consultants and system administrators who install, deploy, and administer WebSphere Business Integration Express for Item Synchronization in a Microsoft Windows 2000 environment.

---

## Related documents

The complete set of documentation describes the features and components common to all installations of IBM WebSphere Business Integration Express for Item Synchronization, and includes reference material on specific components.

You can download, install, and view the documentation at the following site:  
<http://www.ibm.com/websphere/wbiitemsync/express/infocenter>.

---

## Typographic conventions

This document uses the following conventions:

`courier font`

Indicates a literal value, such as a command name, filename, information that you type, or information that the system prints on the screen.

**bold**  
*italic*

Indicates a new term the first time that it appears.  
Indicates a variable name or a cross-reference. When you view IBM WebSphere InterChange Server document as a PDF file, cross-references are both italic and blue. You can click on a cross-reference to jump to the target information.

*italic courier*

Indicates a variable name within literal text.

`boxed courier`

Separates a code fragment from the rest of the text.

blue outline

A blue outline, which is visible only when you view a manual online, indicates a cross-reference hyperlink. Click inside the outline to jump to the object of the reference.

{ }

In a syntax line, curly braces surround a set of options from which you must choose only one.

[ ]

In a syntax line, brackets surround an optional parameter.

---

|                   |   |
|-------------------|---|
| ...               | In a syntax line, ellipses indicate a repetition of the previous parameter. For example, <code>option[,...]</code> means that you can enter multiple, comma-separated options.  |
| \                 | In this document, backslashes (\) are used as the convention for directory paths. For UNIX installations, substitute slashes (/) for backslashes. All IBM WebSphere InterChange Server pathnames are relative to the directory where the product is installed on your system. |
| <i>ProductDir</i> | Represents the directory where the product is installed.  |

---



---

## **New in this release**

The Installer is the first release as part of the IBM WebSphere Business Integration Express for Item Synchronization release.



---

## Chapter 1. Installation requirements

This chapter contains the following sections:

- “Hardware requirements”
- “Software requirements”
- “Database requirements” on page 3

Before you install the IBM WebSphere Business Integration Express for Item Synchronization software, ensure that you have all the necessary prerequisites. The topics in this chapter give you a brief overview of the system hardware and software requirements, the supported databases, and the user accounts required to run IBM WebSphere Business Integration Express for Item Synchronization software.

---

### Hardware requirements

IBM recommends that you run WebSphere Business Integration Express for Item Synchronization on a dedicated system. The system should have restricted access to maintain security.

Table 1 lists the minimum hardware requirements. However, the actual requirements for your system may be greater, depending on the complexity of your specific environment, throughput, and data object size. Also, the following information is for the IBM WebSphere Business Integration Express for Item Synchronization only. If you choose to run other applications on the same system, make appropriate adjustments.

*Table 1. Hardware Requirements*

| Component   | Minimum Required   |
|---|--|
| Processor   | Pentium III @ 1 GHz  |
| Memory  | 512 MB   |
| Disk space: WebSphere Business Integration Express for Item Synchronization and supporting software | 40 GB  |
| Disk space: WebSphere Business Integration Express for Item Synchronization databases               | <ul style="list-style-type: none"><li>• Repository 300-500 MB</li><li>• Rollback 500 MB</li><li>• Temporary 500 MB</li></ul> |

---

### Software requirements

The IBM WebSphere Business Integration Express for Item Synchronization system consists of IBM components and third-party components. IBM components are delivered on the product CD. Certain third-party components are also supplied by IBM and delivered on the CD. Other third-party software, such as Microsoft SQL Server, are not provided by IBM.

Table 2 on page 2 lists the software requirements for the IBM WebSphere Business Integration Express for Item Synchronization.

Table 2. Software requirements for Windows

| Windows   | Version and patch  | Comments   |
|---|--|--|
| <b>Operating system (one of the following)</b>  |  |  |
| One of the following:<br><ul style="list-style-type: none"> <li>Windows 2000 Professional, Server, and Advanced Server</li> </ul>   | <ul style="list-style-type: none"> <li>Service Pack 3</li> </ul>   | <ul style="list-style-type: none"> <li>Windows 2000 required for the WebSphere Business Integration Toolset 4.2.x</li> </ul> |
| <b>Database (required)</b>  |  |  |
| One of the following:<br><ul style="list-style-type: none"> <li>IBM DB2 Universal Database Server and Client Building DB2 stored procedures requires a DB2 supported C or C++ compiler.</li> <li>Microsoft SQL Server 2000</li> </ul>   | <ul style="list-style-type: none"> <li>Version 8.1, Express</li> <li>2000, Version 8.00.384 with Service Pack 3</li> </ul> | DB2 Express is provided with this product. DB2-supported compiler is not provided with this product.                         |
| <b>Other prerequisite software (based on required function)</b>   |  |  |
| IBM WebSphere MQ Server and Client  | Version 5.3.0.2 with CSD3  | Provided with this product   |
| Web servers (one of the following):<br><ul style="list-style-type: none"> <li>WebSphere Application Server, Express</li> <li>Tomcat</li> </ul>  | <ul style="list-style-type: none"> <li>Version 5.0.2</li> <li>Version 4.1.24 or 4.1.18</li> </ul>                          | For Web-based System Monitor   |
| Code Control (one of the following):<br><ul style="list-style-type: none"> <li>ClearCase LT</li> <li>Concurrent Version System (CVS)</li> </ul>   | <ul style="list-style-type: none"> <li>Version 4.2</li> <li>Version 1.11</li> </ul>  | For source control in System Manager   |
| An SMTP mail protocol e-mail system (for example, Microsoft Outlook, Microsoft Exchange, or Eudora)   |  | For e-mail support   |
| Adobe Acrobat Reader 4.0 or later. IBM recommends using version 4.0.5 or later of Acrobat Reader, with Search option, so that you can take advantage of the PDF Search feature. Go to <a href="http://www.adobe.com">http://www.adobe.com</a> for the latest version of Adobe Acrobat Reader for your platform. |  |  |
| One of the following browsers:<br><ul style="list-style-type: none"> <li>Microsoft Internet Explorer</li> <li>Netscape Navigator</li> </ul>   | <ul style="list-style-type: none"> <li>N/A</li> <li>Version 4.x</li> </ul>   | Required to view documents   |
| One of the following browsers with Adobe SVG Viewer 3.0 plugin:<br><ul style="list-style-type: none"> <li>Microsoft Internet Explorer</li> <li>Netscape Navigator</li> </ul>  | <ul style="list-style-type: none"> <li>Version 6, Service Pack 1 or later</li> <li>Version 4.7x</li> </ul>                 | Required to use the Web-based System Monitor   |
| <b>Embedded components</b>  |  |  |
| IBM JDBC driver   | Version 8.1, for Type 2 driver for DB2   | For connectivity with DB2  |

Table 2. Software requirements for Windows (continued)

| Windows                  | Version and patch | Comments  |
|--------------------------|-------------------|---|
| IBM Java Development Kit | Version 1.3.1_05  | Required for compiling collaborations and maps. Provided with this product. |
| IBM JCE                  | Version 1.2.1     |   |
| IBM JRE                  | Version 1.3.1_05  | Provided with this product.   |

## Third-party support

IBM supports the third-party product versions that are listed in Table 2 on page 2. If you find a problem in one of the third-party product versions that is no longer supported by the third-party vendor, an upgrade to a supported version may be necessary.

---

## Database requirements

IBM WebSphere Business Integration Express for Item Synchronization is certified for use with IBM DB2 Express version 8.1 and Microsoft SQL Server 2000.

### SQL Server

SQL Server must be configured to meet the following minimum criteria (see for instructions):

- WebSphere Business Integration Express for Item Synchronization administrator user with table creation privileges created
- 50 MB of disk space for data files available for the repository database
- 40 user connections configured
- 50 MB of disk space available for the mapping tables (optional)
- Logging configured for Truncate Log on Checkpoint

### DB2 Server

DB2 Server must be configured to meet the following criteria:

**Note:** Building DB2 stored procedures requires a DB2 supported C or C++ compiler. For information about working with stored procedures, read the DB2 documentation.

- WebSphere Business Integration Express for Item Synchronization administrator user with database and table creation privileges created.
- 50 MB of disk space for data files available for the InterChange Server Express repository database.
- The maxappls and maxagents parameters configured with a minimum of 50 user connections each.
- The tablespace for the mapping tables (optional) configured to contain at least 50 MB of data.
- Maximum application heap size configured to be at least 2048.



---

## Chapter 2. Using the Launchpad

This chapter contains the following sections:

- “Installation overview”
- “Getting started”
- “Software prerequisites” on page 6
- “Database setup” on page 7

Before you perform the procedures described in this chapter, ensure that your system meets the prerequisites described in Chapter 1, “Installation requirements,” on page 1.

---

### Installation overview

This chapter provides a high-level view of the WebSphere Business Integration Express for Item Synchronization installation process.

The following tasks are described in detail in this guide:

1. Confirm that your system meets the minimum hardware requirements.
2. Confirm that all third-party software is installed or is available for installation as described in the installation process.
3. Run the Launchpad to confirm that your system has the prerequisite software installed. If your system is missing any of the prerequisite software, you can use Launchpad to install the missing software.
4. Install WebSphere Business Integration Express for Item Synchronization software.

---

### Getting started

The WebSphere Business Integration Express for Item Synchronization installation CD provides a GUI-based setup launchpad and installation program that guides you through the installation and configuration of the software. IBM WebSphere Business Integration Express for Item Synchronization Launchpad provides a graphical user interface to check software prerequisites and the database setup on your computer. Installer provides a graphical user interface to guide you through the installation of WebSphere Business Integration Express for Item Synchronization.

If you have previously installed the appropriate version of the prerequisite products, you might not need to reinstall it for use with IBM WebSphere Business Integration Express for Item Synchronization. However, you should check the configuration instructions for the specific software.

**Note:** If you have Norton AntiVirus running on your machine, you must turn it off and reboot your machine before you use the WebSphere Business Integration Express for Item Synchronization Launchpad.

To invoke the WebSphere Business Integration Express for Item Synchronization Launchpad:

1. Insert the WebSphere Business Integration Express for Item Synchronization CD.
2. At the Welcome screen, select Software Prerequisites.  
The Software Prerequisites screen appears.

---

## Software prerequisites

The WebSphere Business Integration Express for Item Synchronization Launchpad checks the Windows registry to see if the prerequisite software is installed on your machine. See “Software requirements” on page 1 for a list of the required software.

After Launchpad checks your machine for prerequisite software, Launchpad displays the prerequisite software and the status. Statuses include **Not Installed**, **Optional**, or **OK**. WebSphere Business Integration Express for Item Synchronization requires the installation of the IBM Java Development Kit 1.3.1\_05 and WebSphere MQ 5.3.0.2 CSD3. If these items are not installed, you can use the Launchpad to install them on your machine. Depending on your requirements, optional software does not have to be installed. Optional software includes Microsoft Internet Explorer 6 Service Pack 1, Netscape Navigator 4.75, Apache Tomcat 4.1.18 or 4.1.24, and IBM WebSphere Application Server Express v5.0.2. For more information on software prerequisites, see “Software requirements” on page 1.

## Installing the Java compiler

The Java compiler that is compatible with WebSphere Business Integration Express for Item Synchronization is contained within the IBM Java Development Kit 1.3.1\_05 and is required for Java-based adapters and collaboration and mapping development.

To install the IBM Java Development Kit 1.3.1\_05:

1. From the Software Prerequisites screen, expand IBM Java Development Kit 1.3.1\_05.
2. Click install to start the silent installation of IBM Java Development Kit 1.3.1\_05.

**Note:** If you do not plan to compile adapters, collaborations, or maps, then select the “I do not plan to compile collaborations or maps” box. Selecting this box changes the status from “Not Installed” to “Optional” in the Launchpad and allows you to continue with the installation process.

3. After IBM Java Development Kit 1.3.1\_05 silent installation, verify that the status in the Launchpad changed from “Not Installed” to “OK”.

## Installing WebSphere MQ

WebSphere MQ is messaging software that enables communication between InterChange Server Express and connectors. InterChange Server Express accesses the WebSphere MQ Server as an MQI Java client or JMS.

To install IBM WebSphere MQ 5.3.0.2 CSD3:

1. From the Software Prerequisites screen, expand IBM WebSphere MQ 5.3.0.2 CSD3.
2. Click install to start the silent installation of IBM WebSphere MQ 5.3.0.2 CSD3.



**Note:** If you plan to only install the Tool components then select the **I intend to only install the Tools component** box. Selecting this box changes the status from “Not Installed” to “OK” in the Launchpad and allows you to continue with the installation process.

3. After IBM WebSphere MQ 5.3.0.2 CSD3 silent installation, verify that the status in the Launchpad status changed from “Not Installed” to “OK.”

## Installing Microsoft Internet Explorer

This guide does not provide installation instructions for Microsoft Internet Explorer 6 Server Pack 1. For a description of the installation process, expand Microsoft Internet Explorer 6 Server Pack 1 and click the link to the Microsoft’s Web site.

## Installing Netscape Navigator

This guide does not provide installation instructions for Netscape Navigator. For a description of the installation process, expand Netscape Navigator 4.75 and click the link to the Netscape’s Web site.

## Installing Apache Tomcat

This guide does not provide installation instructions for Apache Tomcat 4.1.18 or 4.1.24. For a description of the installation process, expand Apache Tomcat 4.1.18 or 4.1.24 and click the link to the Apache Web site.

## Installing WebSphere Application Server Express

This guide does not provide installation instructions for IBM WebSphere Application Server Express v5.0.2. For a description of the installation process, expand IBM WebSphere Application Server Express v5.0.2 and click the link to the IBM Web site.

---

## Database setup

IBM WebSphere Business Integration Express for Item Synchronization supports both IBM DB2 Universal Database v8.1 Express and Microsoft SQL Server 2000. In order to use IBM WebSphere Business Integration Express for Item Synchronization, you must have one of the supported databases installed on your machine. You must also have administrator privileges to create a new database and add new users. If you do not have one of the supported databases on your machine, you can use Launchpad to install IBM DB2 Universal Database v8.1 Express.

## DB2 Express

### Installing IBM DB2 Universal Database v8.1 Express

To install IBM DB2 Universal Database v8.1 Express, do the following:

1. From Launchpad, click Database Setup.  
The Database Setup screen appears.
2. Click Install IBM DB2 Universal Database v8.1 Express to start the silent installation.
3. After IBM DB2 Universal Database v8.1 Express is successfully installed, you should see a message that the database setup is complete. See Chapter 3, “Installing WebSphere Business Integration Express for Item Synchronization,” on page 9 for instructions on how to install WebSphere Business Integration Express for Item Synchronization.

## Existing IBM DB2 Universal Database v8.1

To configure an already existing IBM DB2 Universal Database v8.1 database:

1. From Launchpad, click Database Setup.  
A screen appears indicating that IBM DB2 Universal Database v8.1 was found on the computer.
2. Click **Continue**.
3. Do the following at the “Setup DB2 SQL Procedures Environment” screen:
  - a. Type the name and path of the batch file that sets the environment variables for the compiler that DB2 uses to compile stored procedures in the **Compiler Path** field.
  - b. Either leave the **Use the default value for DB2\_SQLROUTINE\_COMPILE\_COMMAND** box selected to use the default compiler command or clear the box and type the desired compiler command in the **Compile Command** field.
4. Click **Continue**.

After IBM Install IBM DB2 Universal Database v8.1 is successfully configured, you should see a message that the database configuration is complete. See Chapter 3, “Installing WebSphere Business Integration Express for Item Synchronization,” on page 9 for instructions on how to install WebSphere Business Integration Express for Item Synchronization.

## Microsoft SQL Server 2000

This guide does not provide installation instructions for Microsoft SQL Server 2000. For a description of the installation process, see Microsoft’s Web site.

If Microsoft SQL Server 2000 is currently installed on your machine, follow the instructions in this section to configure your database.

To configure an already existing Microsoft SQL Server 2000 database:

1. From Launchpad, click Database Setup.  
The Currently Installed Databases screen appears.
2. Select **Use Microsoft SQL Server 2000**, then click **Continue**.  
The Microsoft SQL Server 2000 Configuration screen appears.
3. Type the name of a login that belongs to the “System Administrators” server role in the **User name** field.
4. Type the password for the user name specified in step 3 in the **Password** field.
5. Type the password for the user name specified in step 3 in the **Confirm password** field.
6. Click **Create repository database**.

After Microsoft SQL Server 2000 is successfully configured, you should see a message that the database configuration is complete. See Chapter 3, “Installing WebSphere Business Integration Express for Item Synchronization,” on page 9 for instructions on how to install WebSphere Business Integration Express for Item Synchronization.

---

## Chapter 3. Installing WebSphere Business Integration Express for Item Synchronization

This chapter contains the following sections:

- “Installing IBM WebSphere Business Integration Express for Item Synchronization software”
- “WebSphere Business Integration Express for Item Synchronization files and directories” on page 12
- “Uninstalling IBM WebSphere Business Integration Express for Item Synchronization” on page 13

---

### Installing IBM WebSphere Business Integration Express for Item Synchronization software

The IBM WebSphere InterChange Server installation CD provides a GUI-based setup program that guides you through the installation of the software.

Before you perform the procedures described in this chapter, ensure that your system meets the prerequisites described in Chapter 1 of this Guide.

To start the installation process, do the following:

1. From the WebSphere Business Integration Express for Item Synchronization Launchpad, select Install Product.

The Install product screen appears.

**Note:** This procedure assumes installation from CD. If you obtain your software from Passport Advantage, make sure you have downloaded it. Refer to your Passport Advantage information for those downloading instructions.

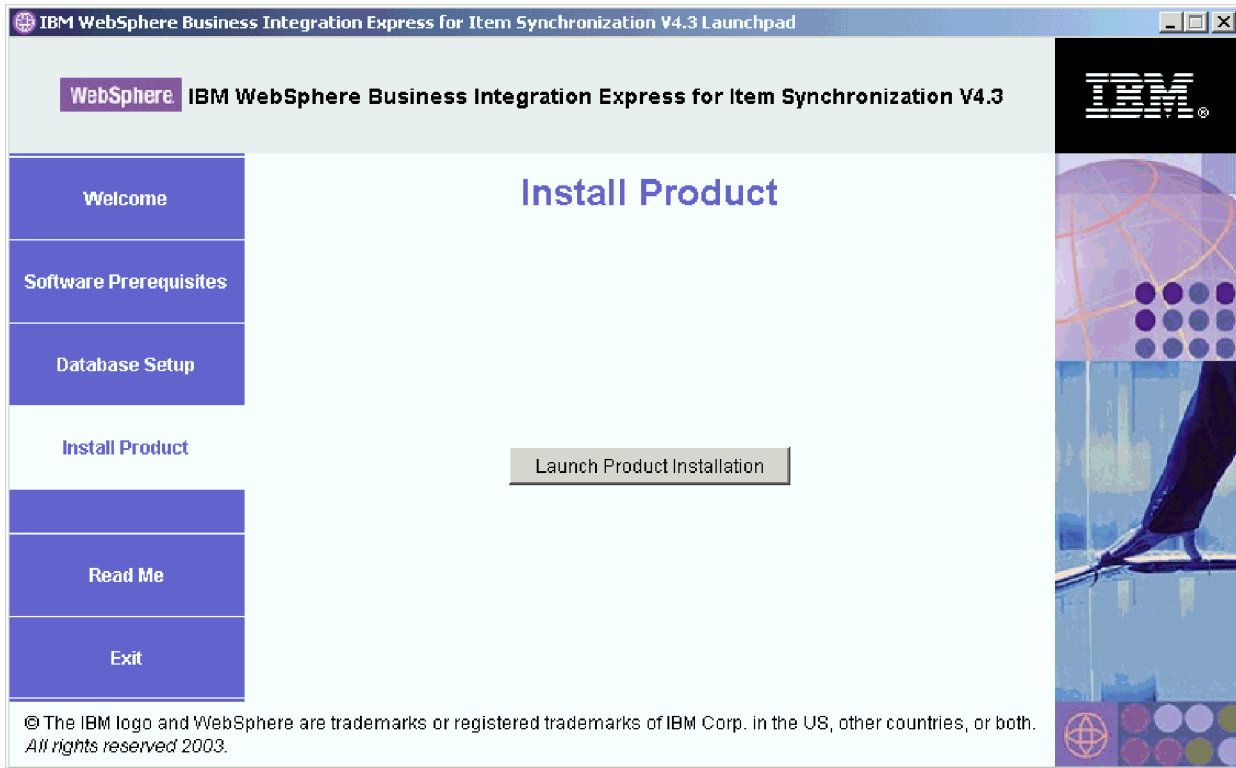


Figure 1. The Install Product screen

2. Click Launch Product Installation.
3. At the Welcome screen, Click Next.  
The License Agreement screen appears.
4. Read and accept the terms of the Software License Agreement, then click Next.
5. Accept the default installation location or browse for a different location, then click **Next**.  
The Setup type screen appears.

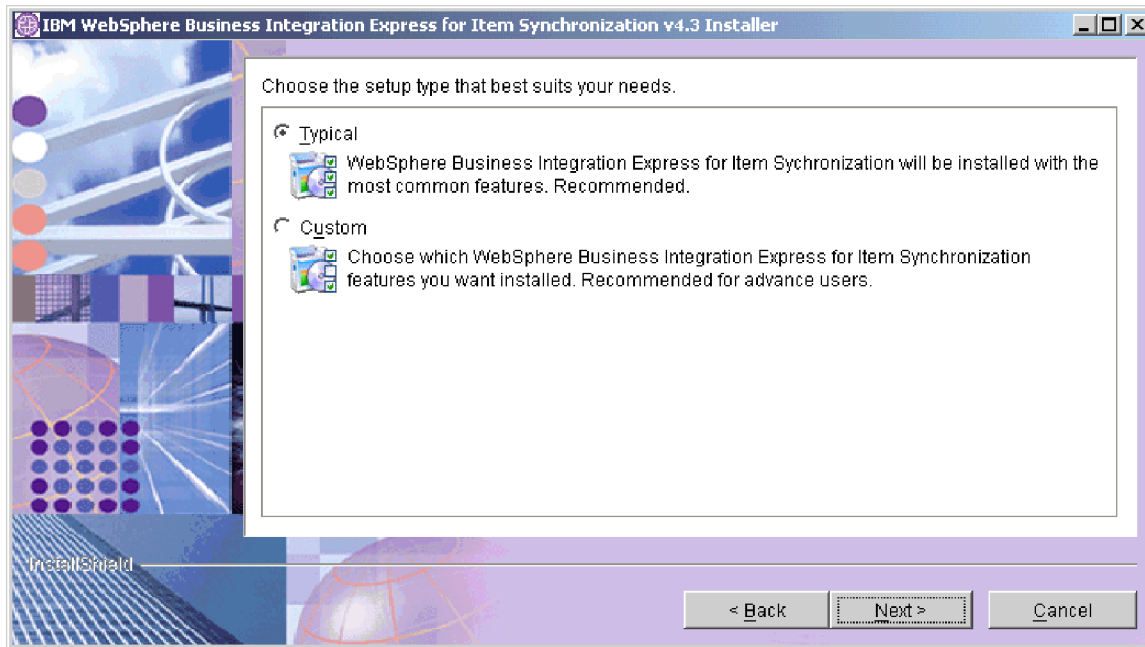


Figure 2. The Setup Type screen

6. Select the setup type and click Next.

Typical setup includes:

- WebSphere Business Integration Collaboration for UCCnet Item Synchronization
- WebSphere Business Integration Toolset
- WebSphere Business Integration Adapter for iSoft Peer-to-Peer Agent
- WebSphere Business Integration Adapter for JText

Custom setup allows you to choose which features to install. Custom setup defaults to the features installed with Typical setup. You should be familiar with your Enterprise Resource Planning application data before selecting additional components. Custom setup is recommended for advance users.

If you select Custom setup, the Feature screen will appear. Select specific features to be installed, confirm your selections, then click **Next**.

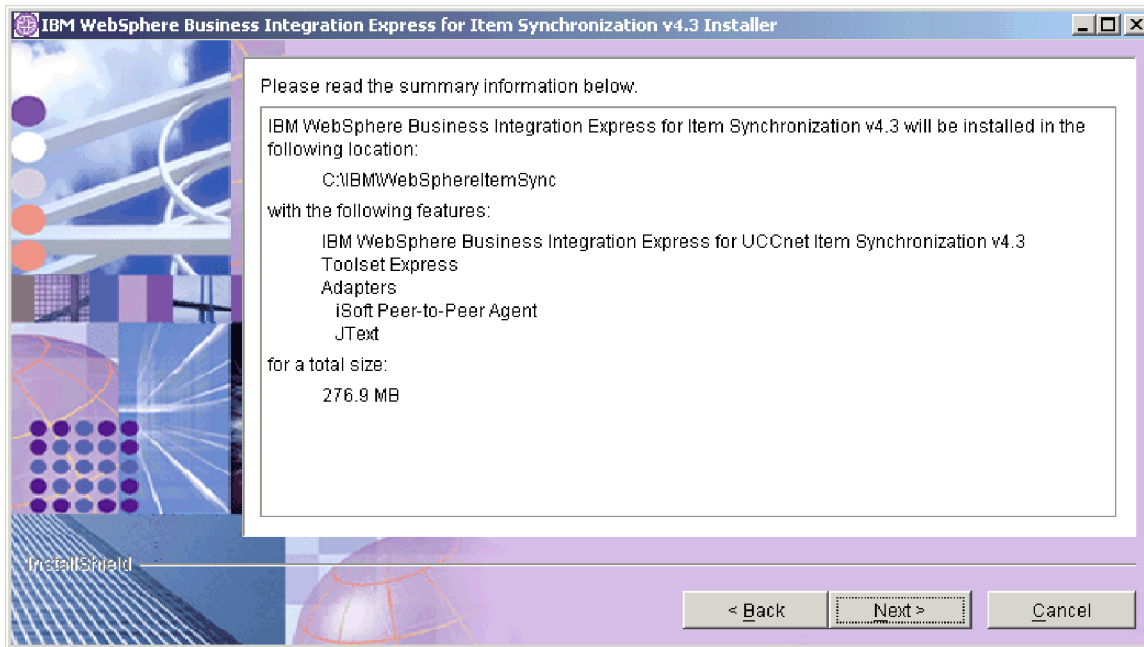


Figure 3. The Summary screen

7. If you only selected the Toolset Express for installation, then the Naming server screen appears.  
Type in the IP address of the computer where you plan to install WebSphere Business Integration Express for Item Synchronization, and then click Next.  
The Summary screen appears.
8. Review the features and installation location and click **Next**.  
A number of informational screens are presented. Afterwards, you will be asked to restart the computer.
9. Restart the computer.

## WebSphere Business Integration Express for Item Synchronization files and directories

Once WebSphere Business Integration Express for Item Synchronization is installed, you can view the file system and its contents. The directories are located under the IBM\WebSphereItemSync directory.

Table 3. WebSphere Business Integration Express for Item Synchronization directory structure

| Directory name  | Contents  |
|-----------------|---|
| _jvm            | This directory contains the Java Virtual Machine (JVM) that is used by Installer.   |
| _uninstItemSync | This directory contains the <code>uninstaller.exe</code> file that is used to remove WebSphere Business Integration Express for Item Synchronization 4.3. |
| _uninstZip      | This directory contains a listing of the unzipped System Manager files that are removed when the Uninstaller is run.                                      |
| bin             | This directory contains the executable files, <code>.dll</code> files, and <code>.bat</code> files that the InterChange Server system uses.               |

Table 3. WebSphere Business Integration Express for Item Synchronization directory structure (continued)

| Directory name  | Contents   |
|-----------------|--|
| collaborations  | This directory contains subdirectories that contain .class files and message files for installed collaborations.   |
| connectors      | This directory contains files specific to each adapter in the system. It also contains adapter-specific files that you may need to install in the application that the adapter supports.   |
| DataHandlers    | This directory contains the .jar files for data handlers that InterChange Server Express uses.   |
| DevelopmentKits | This directory contains sample files to assist the developer in creation of various system components. Samples provided include: Server Access for EJB, Server Access for J2EE Connector Architecture, connectors (C++ and Java), and Object Discovery Agents. |
| DLMs            | This directory contains subdirectories that contain Dynamic Loadable Modules (DLMs) and other files for InterChange Server maps.   |
| legal           | This directory contains the license files.   |
| lib             | This directory contains .jar files for the system.   |
| messages        | This directory contains the generated message files.   |
| mqseries        | This directory contains files specific to WebSphere MQ, including certain executable files.  |
| ODA             | This directory contains the Object Discovery Agent .jar and .bat files for each agent.   |
| repository      | This directory contains the definitions for the WebSphere Business Integration Express for Item Synchronization components.  |
| Samples         | This directory contains component definitions for benchmarking samples and sample mail files for WebSphere Business Integration Express for Item Synchronization collaborations.   |
| src             | This directory contains samples of Relationship Service APIs for cross-referencing.  |
| Tools           | This directory contains the Workbench files if selected during installation.   |
| WBSM            | This directory contains the Web-based System Monitor files.  |

## Uninstalling IBM WebSphere Business Integration Express for Item Synchronization

IBM provides an Uninstall program that you can use to remove your entire WBI Express for Item Synchronization installation, or select specific components for removal.

1. Click Start > Settings > Control Panel.
2. Double-click Add/Remove Programs.
3. Scroll down and select IBM WebSphere Express for Item Synchronization. Click the Change/Remove button.
4. The Uninstaller window appears. Click Next.

The “Select the features for IBM WebSphere Express for Item Synchronization you would like to uninstall” window appears. The installed components appear with check marks next to them.

5. Leave any components checked that you want removed and click Next.
6. Click Next to confirm you selections.

The Uninstaller window appears and removes the selected components.

7. Click Finish.



---

## Chapter 4. Installing and configuring Web-based System Monitor

The Web-based System Monitor is a tool that allows you to monitor the IBM WebSphere InterChange Server Express system from the Web. It allows you to configure how you view data and also allows you to view historical data in addition to current data.

This chapter contains the following sections:

- “Installing Web-based System Monitor”
- “Configuring Tomcat to use Web-based System Monitor” on page 16

---

### Installing Web-based System Monitor

If you installed WebSphere Application Server Express 5.0.2, the installer will automatically install and configure Web-based System Monitor on WebSphere Application Server. The application server created by the installer is called ICSMonitor.

The installation of WebSphere Application Server Express 5.0.2 does not include a Web server.

**Note:** If you do not have a Web server currently installed and would like to install one, you can download IBM HTTP Server for free from IBM’s Web site. You will also need to install the Web server plugin for WebSphere Application Server Express. See the WebSphere Application Server Express documentation for more information.

Therefore when the installer installs Web-based System Monitor, Web-based System Monitor is configured to use a default port number, 7089. If you would like to use a different port number and you do not currently have a Web server installed, follow the procedures in this section to configure Web-based System Monitor to use a different port number.

If you have a Web server installed and you have also installed the WebSphere Application Server Express Web server plugin, you can run a script to install Web-based System Monitor. Follow the procedures in this section to install Web-based System Monitor using an installation script.

### Installing and configuring Web-based System Monitor to use a Web server

To install Web-based System Monitor using the installation script:

1. Run `WebSphereItemSync/bin/CWDashboard.bat` with the following parameters:
  - Install path for WebSphere Application Server Express, e.g. `C:\Program Files\IBM\WebSphere\Express502\AppServer`
  - Fully qualified host name of machine you are installing in, e.g. `hostname.ibm.com`
  - WebSphere Business Integration installation directory, e.g. `C:\IBM\WebSphereItemSync`
  - Path to DB2 install java directory, e.g. `C:\IBM\SQLLIB\java`

- y (for HTTP server yes)
2. Stop the ICSMonitor Application Server from the command line:  
C:\IBM\WebSphere\Express502\AppServer\bin\stopServer.bat ICSMonitor
  3. Start the Web-based System Monitor from the command line:  
C:\IBM\WebSphere\Express502\AppServer\bin\startServer.bat ICSMonitor
  4. To access Web-based System Monitor:  
http://hostname/ICSMonitor

## Configuring Web-based System Monitor to use a different port number

1. Run IBM/WebSphereItemSync/bin/CWDashboard.bat with the following parameters:
  - Install path for WebSphere Application Server Express
  - Fully qualified host name of machine you are installing in
  - WebSphere Business Integration Express for Item Synchronization install directory
  - Path to DB2 install java directory
  - n (for no HTTP server)
  - New Port number
  - New SSL port number (default is 7043)
2. Stop the ICSMonitor Application Server from the command line:  
C:\IBM\WebSphere\Express502\AppServer\bin\stopServer.bat ICSMonitor
3. Start the Web-based System Monitor from the command line:  
C:\IBM\WebSphere\Express502\AppServer\bin\startServer.bat ICSMonitor
4. To access Web-based System Monitor:  
http://hostname:portnumber//ICSMonitor

---

## Configuring Tomcat to use Web-based System Monitor

If you plan to use Tomcat as your application server instead of WebSphere Application Server, follow the instructions in this section to configure Tomcat to use Web-based System Monitor.

To configure Tomcat to use Web-based System Monitor:

1. Create the ICSMonitor directory under Tomcat\_home\webapps. Where Tomcat\_home is the path of the Tomcat installation in your environment.
2. Extract the WAR file contents into the ICSMonitor directory. The CWDashboard.war file will be in the \WBSM directory.
3. Copy the xerces.jar file from Tomcat\_home\webapps\ICSMonitor\WEB-INF\lib to Tomcat\_home\common\lib.
4. Rename the xercesImpl.jar file, located in the Tomcat\_home\common\endorsed directory to xercesImpl.jar.old.
5. Edit the setclasspath.bat file, located in Tomcat\_home\bin.

Set the JAVA\_OPTS property as follows:

```
set JAVA_OPTS=-DDASHBOARD_HOME=<Tomcat_home>\webapps\ICSMonitor
-DDASHBOARD_URL=http://<HostName>[:PortNumber]/ICSMonitor
-DORBNamingProvider=CosNaming -Dorg.omg.CORBA.ORBClass=com.ibm.CORBA.iiop.ORB
-Dorg.omg.CORBA.ORBInitialPort=%ORB_PORT%
-Dorg.omg.CORBA.ORBInitialHost=%ORB_HOST%
-Dcom.ibm.CORBA.Debug.Output=stdout
```

where `%ORB_PORT%` and `%ORB_HOST%` match what is in `ProductDir/bin/CWSharedEnv.bat`, `HostName` is the name of the computer on which Web-based System Monitor is running, `PortNumber` is the port number to be used, and `Tomcat_home` is the path and name of the Tomcat product directory.

**Note:** If `Tomcat_home` contains spaces, use quotes around the `DASHBOARD_HOME` value.

6. Change the port number in the `Tomcat_home\conf\server.xml` file. This step is optional.

The default port number is 8080.

7. Start Tomcat from the command line:

```
Tomcat_home/bin/startup.bat
```

Otherwise, the `setclasspath.bat` file is not called.



---

## Notices

IBM may not offer the products, services, or features discussed in this document in all countries. Consult your local IBM representative for information on the products and services currently available in your area. Any reference to an IBM product, program, or service is not intended to state or imply that only that IBM product, program, or service may be used. Any functionally equivalent product, program, or service that does not infringe any IBM intellectual property right may be used instead. However, it is the user's responsibility to evaluate and verify the operation of any non-IBM product, program, or service.

IBM may have patents or pending patent applications covering subject matter described in this document. The furnishing of this document does not give you any license to these patents. You can send license inquiries, in writing, to:

IBM Director of Licensing  
IBM Corporation  
North Castle Drive  
Armonk, NY 10504-1785  
U.S.A.

The following paragraph does not apply to the United Kingdom or any other country where such provisions are inconsistent with local law:

INTERNATIONAL BUSINESS MACHINES CORPORATION PROVIDES THIS PUBLICATION "AS IS" WITHOUT WARRANTY OF ANY KIND, EITHER EXPRESS OR IMPLIED, INCLUDING, BUT NOT LIMITED TO, THE IMPLIED WARRANTIES OF NON-INFRINGEMENT, MERCHANTABILITY OR FITNESS FOR A PARTICULAR PURPOSE. Some states do not allow disclaimer of express or implied warranties in certain transactions, therefore, this statement may not apply to you.

This information could include technical inaccuracies or typographical errors. Changes are periodically made to the information herein; these changes will be incorporated in new editions of the publication. IBM may make improvements and/or changes in the product(s) and/or program(s) described in this publication at any time without notice.

Any references in this information to non-IBM Web sites are provided for convenience only and do not in any manner serve as an endorsement of those Web sites. The materials at those Web sites are not part of the materials for this IBM product and use of those Web sites is at your own risk.

IBM may use or distribute any of the information you supply in any way it believes appropriate without incurring any obligation to you.

Licensees of this program who wish to have information about it for the purpose of enabling: (i) the exchange of information between independently created programs and other programs (including this one) and (ii) the mutual use of the information which has been exchanged, should contact:

IBM Burlingame Laboratory Director  
IBM Burlingame Laboratory  
577 Airport Blvd., Suite 800

Burlingame, CA 94010  
U.S.A

Such information may be available, subject to appropriate terms and conditions, including in some cases, payment of a fee.

The licensed program described in this document and all licensed material available for it are provided by IBM under terms of the IBM Customer Agreement, IBM International Program License Agreement, or any equivalent agreement between us.

Any performance data contained herein was determined in a controlled environment. Therefore, the results obtained in other operating environments may vary significantly. Some measurements may have been made on development-level systems and there is no guarantee that these measurements will be the same on generally available systems. Furthermore, some measurement may have been estimated through extrapolation. Actual results may vary. Users of this document should verify the applicable data for their specific environment.

Information concerning non-IBM products was obtained from the suppliers of those products, their published announcements or other publicly available sources. IBM has not necessarily tested those products and cannot confirm the accuracy of performance, compatibility or any other claims related to non-IBM products. Questions on the capabilities of non-IBM products should be addressed to the suppliers of those products.

This information may contain examples of data and reports used in daily business operations. To illustrate them as completely as possible, the examples may include the names of individuals, companies, brands, and products. All of these names are fictitious and any similarity to the names and addresses used by an actual business enterprise is entirely coincidental.

All statements regarding IBM's future direction or intent are subject to change or withdrawal without notice, and represent goals and objectives only.

---

## Programming interface information

Programming interface information, if provided, is intended to help you create application software using this program.

General-use programming interfaces allow you to write application software that obtain the services of this program's tools.

However, this information may also contain diagnosis, modification, and tuning information. Diagnosis, modification and tuning information is provided to help you debug your application software.

**Warning:** Do not use this diagnosis, modification, and tuning information as a programming interface because it is subject to change.

---

## Trademarks and service marks

The following terms are trademarks or registered trademarks of International Business Machines Corporation in the United States or other countries, or both:

IBM  
the IBM logo  
AIX  
CrossWorlds  
DB2  
DB2 Universal Database  
Domino  
Lotus  
Lotus Notes  
MQIntegrator  
MQSeries  
Tivoli  
WebSphere

Microsoft, Windows, Windows NT, and the Windows logo are trademarks of Microsoft Corporation in the United States, other countries, or both.

MMX, Pentium, and ProShare are trademarks or registered trademarks of Intel Corporation in the United States, other countries, or both.

Java and all Java-based trademarks are trademarks of Sun Microsystems, Inc. in the United States, other countries, or both.

Other company, product or service names may be trademarks or service marks of others.

System Manager includes software developed by the Eclipse Project (<http://www.eclipse.org/>)



IBM WebSphere InterChange Server V4.3, IBM WebSphere Business Integration Toolset V4.3









Printed in USA