

IBM WebSphere Business Integration Modeler Advanced Edition, Version 5.1 and IBM WebSphere Business Integration Modeler Entry Edition, Version 5.1

Highlights

- *Graphically captures your existing business processes and guidelines in one place for easy reference and company-wide consistency*
- *Allows for detailed analysis of your current processes*
- *Enables you to answer questions about who does what, which organizations participate and which applications are used in your current processes*
- *Delivers sophisticated simulation capabilities to uncover your process weaknesses and highlight improvements*
- *Generates easy-to-use process performance metrics*
- *Generates an assessment of your company's return on investment regarding planned process changes*
- *Works with multiple application technologies to put your process designs into run-time code*

The benefits of agile and responsive business processes

Mapping your enterprise's business processes can be a daunting task. Communicating these processes and all they involve to others can be even more challenging. And when you're ready to streamline your business processes through automation or other initiatives, the inability to communicate your IT requirements could derail the project. As an important step toward becoming an on demand business, the ability to validate, simulate and optimize end-to-end business processes can help you manage your company as an integrated whole.

IBM WebSphere® Business Integration Modeler, Version 5.1 provides business professionals with easy-to-use tools to design, test, improve and communicate complex business processes. Tailored for individual user requirements, IBM WebSphere Business Integration Modeler Entry Edition, Version 5.1 offers entry-level modeling

capabilities that let growing companies capture processes at a lower cost per user. IBM WebSphere Business Integration Modeler Advanced Edition, Version 5.1 provides advanced modeling capabilities for enterprises with more-extensive business processes and delivers sophisticated simulation and optimization capabilities that enable you to analyze the operational efficiency of business processes and potential business results—all before committing resources to development and deployment. Through WebSphere Business Integration Modeler Advanced Edition and WebSphere Business Integration Modeler Entry Edition, you can model the processes that can help you reap the full benefits of on demand business—and the flexibility you need to support and enable the world of integrated business processes.

Redesign and simulate your processes and outcomes

Built on the Eclipse tooling platform to enable seamless integration with other Eclipse-based tools, including IBM WebSphere Studio Application Developer, IBM Rational®, IBM WebSphere MQ Workflow (formerly IBM MQSeries® Workflow) and IBM Tivoli® software, WebSphere Business Integration Modeler Advanced Edition and WebSphere Business Integration Modeler Entry Edition are the first technologies in a new generation of WebSphere modeling tools.

Both the advanced and entry edition provide three different user profiles—and, for the advanced

edition, three operational modes—to target the needs of a variety of users. Users can choose from the basic, intermediate or advanced business modeling user profile, each exposing a different level of information detail and complexity of process modeling. Users can easily switch between these profiles to take advantage of their different capabilities.

The *basic* business modeling profile provides an entry point for business users like business analysts, business modelers and domain experts. This profile enables them to quickly and easily capture and model sequences of activities, complex logic and business rules.

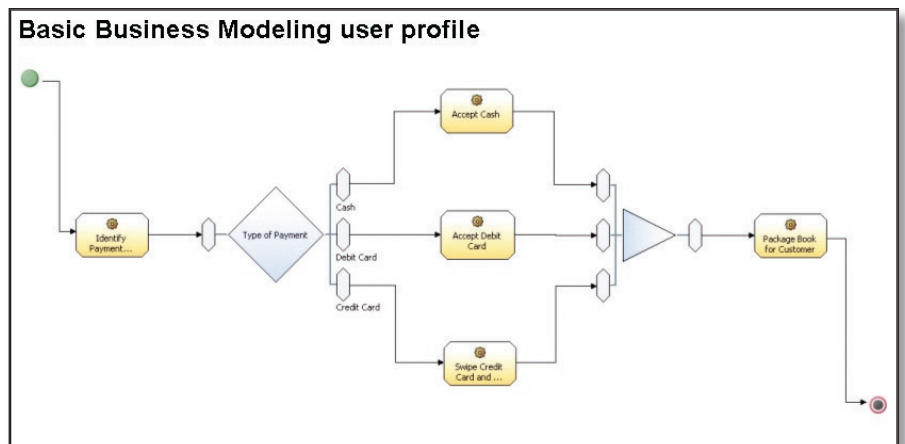


Figure 2. A process model created in the basic business modeling profile

The *intermediate* business modeling profile allows more technically focused users like business architects and business process engineers to specify and view additional details of process and data models, including expressions and cardinality.

The *advanced* business modeling profile provides the most comprehensive level of detail for process models and data models, suitable for solution and IT architects who are focused on deploying the models to run-time environments.

WebSphere Business Integration Modeler lets users choose between three different technology modes:

- **Operational** – *available in both the entry and advanced editions, it is the default mode of operation and provides the most comprehensive detail of the three technology modes*
- **Business Process Execution Language (BPEL)** – *optimized to export models to BPEL, Web Services Description Language (WSDL) and XML Schema Definition Language (XSD) file formats, and to import to IBM WebSphere Studio Application Developer Integration Edition to develop applications from the models*

- **MQ Workflow Flow Definition Language (FDL)** – *optimized to export models to FDL format, giving companies a fast start to IBM WebSphere MQ Workflow as an automated workflow solution*

Both WebSphere Business Integration Modeler Advanced Edition and WebSphere Business Integration Modeler Entry Edition provide a repository for company policies, procedures, schedules and other important enterprise information—in one place—for easy accessibility and enterprise-wide consistency. Linking this information to your business processes is vital to creating an accurate representation of all the factors that shape each process outcome. You can identify the important corporate data and guidelines that affect your process performance to help gauge your company's readiness for process automation. WebSphere Business Integration Models Advanced Edition and WebSphere Business Integration Entry Edition also provide dynamic analytical tools to optimize business process modeling.

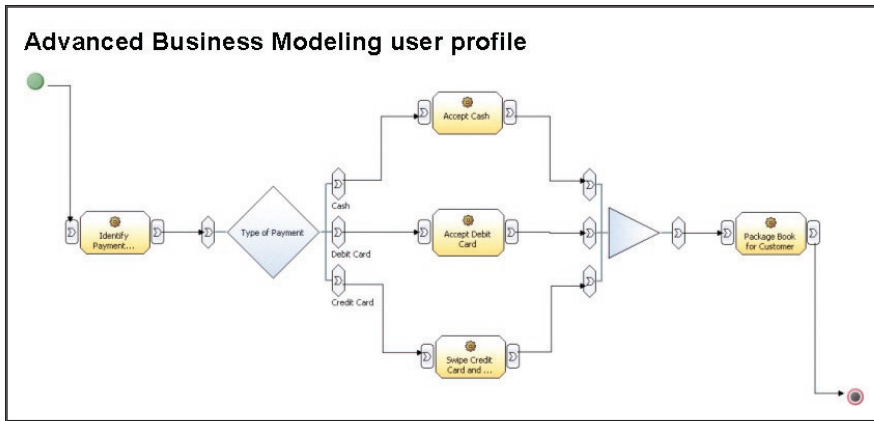


Figure 3. A process model created in the advanced business modeling profile

Many companies have benefited from the entry modeling capabilities first offered by IBM in 2003, allowing business analysts across a company to capture and agree on processes at a lower per-user cost. As business requirements change, you can easily migrate to the advanced capabilities offered in WebSphere Business Integration Modeler Advanced Edition.

Leverage flexible layout options to view models

WebSphere Business Integration Modeler Advanced Edition and WebSphere Business Integration Modeler Entry Edition enables you to view models either in free-form layout or in “swimlane” layout. Free-form layout provides full editing capabilities,

whereas swimlane layout displays the assignment of process activities to particular roles, resources or organization units.

After models have been entered, validation rules can be applied, allowing simple tests to ensure correct documentation and capture of the process stages. Using WebSphere Business Integration Modeler Advanced Edition, companies can go further and test the model with regard to predictions of elapsed time, costs by organization, expected backlogs and so on. These capabilities are delivered by simulating a scenario with the defined model. By comparing the expected costs for the existing processes, and those in the optimized processes you can then prepare a return on investment (ROI) analysis.

Go further: Ensure a fast start to business process deployment

WebSphere Business Integration Modeler Advanced Edition can help give you a fast start to deploying your newly optimized business process by exporting the optimized business process definitions to IBM WebSphere MQ Workflow, Version 3.5, IBM WebSphere Business Integration Server, Version 5.1 (both of these by exporting FDL), and to WebSphere Business Integration Server Foundation (by exporting BPEL). Importing FDL and existing WebSphere Business Integration Workbench, Version 4.2.4 models can also help you reuse existing business data to help you reduce costs.

If you need to refine business models to create applications, WebSphere Business Integration Modeler Advanced Edition also allows you to export Unified Modeling Language (UML) to IBM Rational® XDE™ software. In addition, WebSphere Business Integration Modeler Advanced Edition allows modeling in a team environment by using the Eclipse integrated development environment (IDE) for the check-in and check-out of process models.

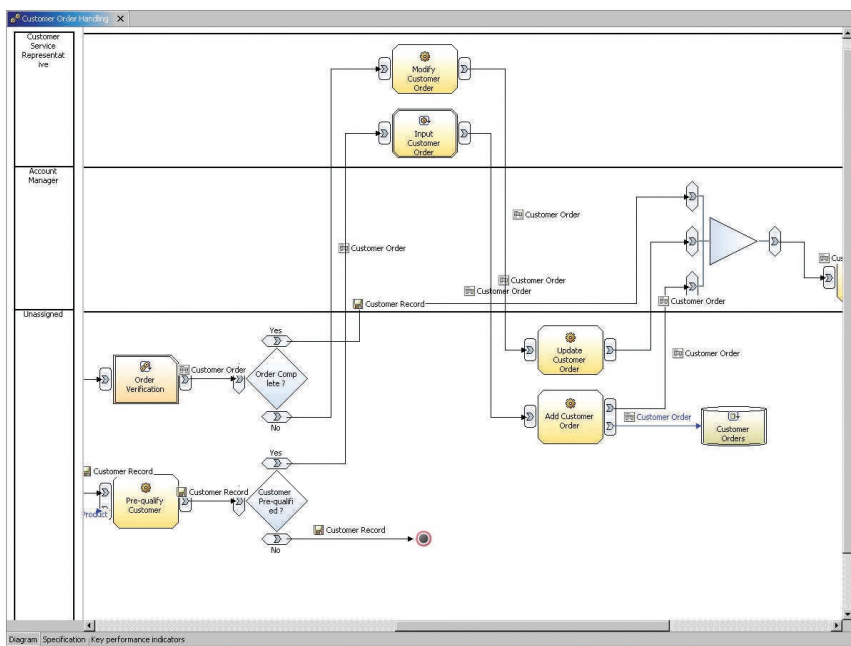


Figure 4. A swimlane layout

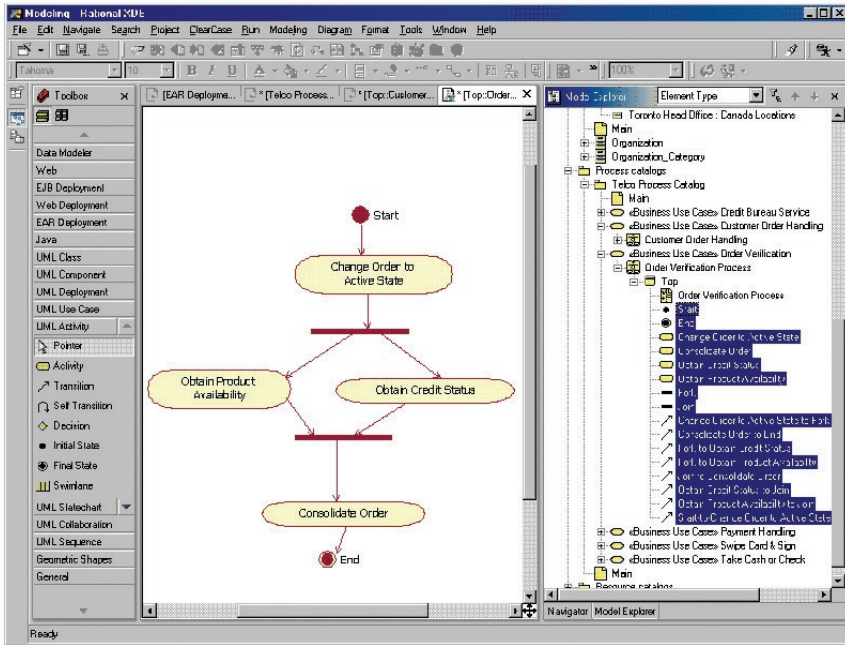


Figure 4. A UML model exported to Rational XDE

WebSphere business integration portfolio

IBM offers a wide range of middleware and operating systems for virtually every computing platform to give you the right tools to become an on demand business. The IBM WebSphere business integration portfolio delivers market-leading middleware that allows you to unite applications, people and business processes so they can work as one. Built on open standards, like Java™ 2 Platform, Enterprise Edition (J2EE), XML and new Web services standards, this robust portfolio is endowed with reliability, scalability and security-rich features—the core strengths that you’ve come to expect from IBM.

With a WebSphere business integration solution, your business managers can effectively model and simulate business processes—then refine these processes to increase efficiencies as needs arise. Your IT staff can quickly and easily integrate previously disparate systems within your existing infrastructure, new applications and systems. And your systems can connect seamlessly with your customers’ and trading partners’ systems to deliver immediate, dynamic—and personalized—information.

For more information

IBM WebSphere Business Integration Modeler is a component of the WebSphere portfolio of business integration infrastructure software. To learn more about WebSphere Business Integration, visit:

ibm.com/websphere/

For more information on IBM WebSphere Business Integration Modeler, and a free trial download, visit:

ibm.com/websphere/integration/wbimodeler

IBM WebSphere Business Integration Modeler Advanced Edition and IBM WebSphere Business Integration Modeler Entry Edition features at a glance

Feature	IBM WebSphere Business Integration Modeler Entry Edition	IBM WebSphere Business Integration Modeler Advanced Edition
User profiles	Basic, intermediate and advanced	Basic, intermediate and advanced
Technology modes	Operational	Operational, BPEL and FDL
Team support	Yes	Yes
Simulation	No	Yes
Static and dynamic analysis	No	Yes
Report generation	Yes	Yes
Query	Yes	Yes
Basis report templates (available)	Yes	Yes
Printing	Yes	Yes
Modeler project import and export	Yes	Yes
Delimited file import and export	Yes	Yes
ADF import	Yes	Yes
XSD import and export	No	Yes
UML export	No	Yes
FDL and BPEL export	No	Yes
FDL import	No	Yes

IBM WebSphere Business Integration Modeler Entry Edition technical specifications at a glance

Hardware requirements

- Intel®Pentium® III 500MHz, or higher
- Memory: 512 MB RAM minimum (768 MB RAM recommended)
- Disk space: 500 MB required for installation and additional user files
- Display resolution: 1024 x 768 minimum

Software requirements

- Microsoft® Windows® XP or Windows 2000 with Service Pack 4 or later.
 - To use the team support functionality, you must have network access to a CVS server compatible with the Eclipse CVS Windows client 2.1.1 plug-in. For more information, visit www.cvshome.org
-

IBM WebSphere Business Integration Modeler Advanced Edition technical specifications at a glance

Hardware requirements

- Intel Pentium III 500 MHz, or higher
- Memory: 512 MB RAM minimum (768 MB RAM recommended)
- Disk space: 500 MB required for installation and additional user files
- Display resolution: 1024 x 768 minimum

Software requirements

- Microsoft Windows XP or Windows 2000 with Service Pack 4 or later
 - Installing and running the product as a plug-in requires IBM WebSphere Studio Application Developer, Integration Editor For Linux and Windows Version 5.1 or later
 - To use the team support functionality, you must have network access to a CVS server compatible with the Eclipse CVS Windows client 2.1.1 plug-in. For more information, visit www.cvshome.org
-



© Copyright IBM Corporation 2004

IBM Corporation
Software Group
Route 100
Somers, NY 10589
U.S.A.

Produced in the United States of America
09-04
All Rights Reserved

IBM, the IBM logo, the On Demand Business logo, MQSeries, Rational, WebSphere and XDE are trademarks of International Business Machines Corporation in the United States, other countries or both.

Intel and Pentium are trademarks of Intel Corporation in the United States, other countries or both.

Microsoft, Windows and Windows NT are trademarks of Microsoft Corporation in the United States, other countries or both.

Linux is a trademark of Linus Torvalds in the United States, other countries, or both.

Java and all Java-based trademarks are trademarks of Sun Microsystems, Inc. in the United States, other countries or both.

Other company, product and service names may be trademarks or service marks of others.



G325-2209-03