

FAStT600 Direct Connect Prerequisite

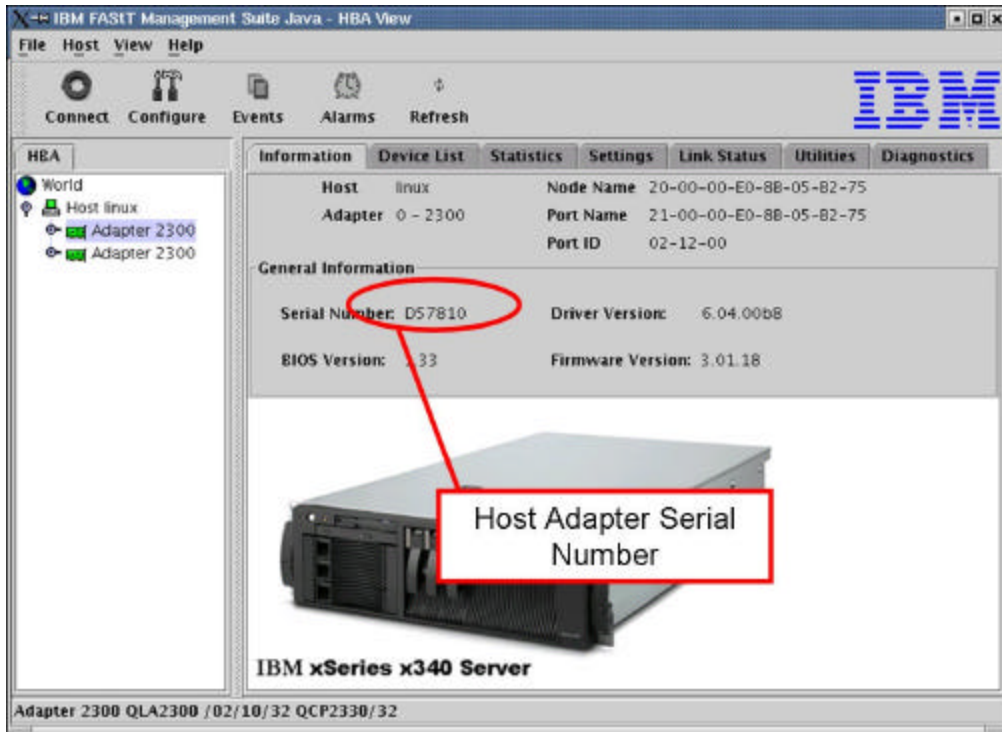
"Direct connection of the FAStT600 to a host system running Microsoft Windows, Novell NetWare or x86 Linux is only supported using the IBM FAStT FC2-133 Host Bus Adapter (HBA), IBM option part number 24P0960 or feature code 2104 with the last 6 digits of the 13 digit serial number of the HBA is H21160 or higher. For example, if the serial number is FFC0308H21161, the last 6 digits will be H21161, which indicates that this HBA meets the FAStT600 direct connect prerequisite.

In addition, direct connect to the NAS 300G (Machine Type 5196) Model G27 or Model G02 containing Feature Code 3706 is only supported if the last 6 digits of the 13 digit serial number of the HBA is above H21160.

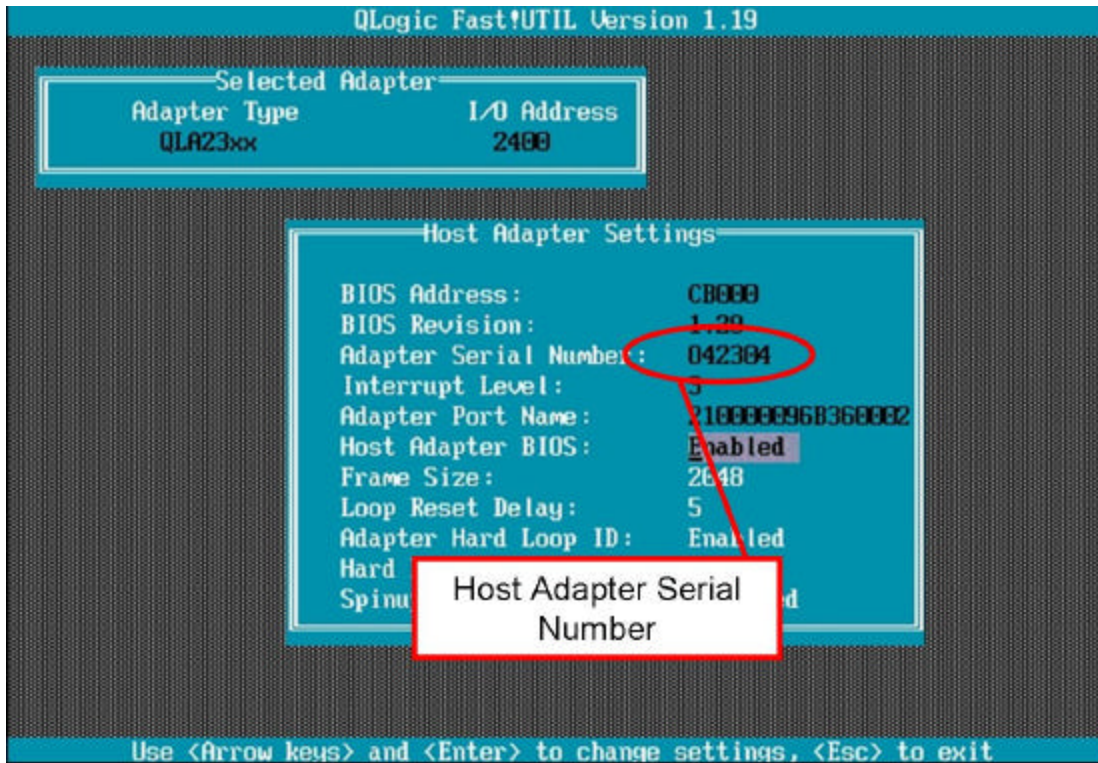
Additional Information pertaining to the FAStT600 Storage Server interoperability with additional HBAs can be found at the following url: <http://www.storage.ibm.com/disk/fastt/pdf/0408-03.pdf>

There are 4 ways to determine the Host Bus Adapter serial number.

1. If your Operating system is running, you can view your Host Adapter serial numbers in the IBM FAStT Management Suite Java (FAStT MSJ). FAStT MSJ is part of the IBM TotalStorage FAStT Storage Manager software packages for the Microsoft Windows, Novell NetWare and x86 Linux operating systems.



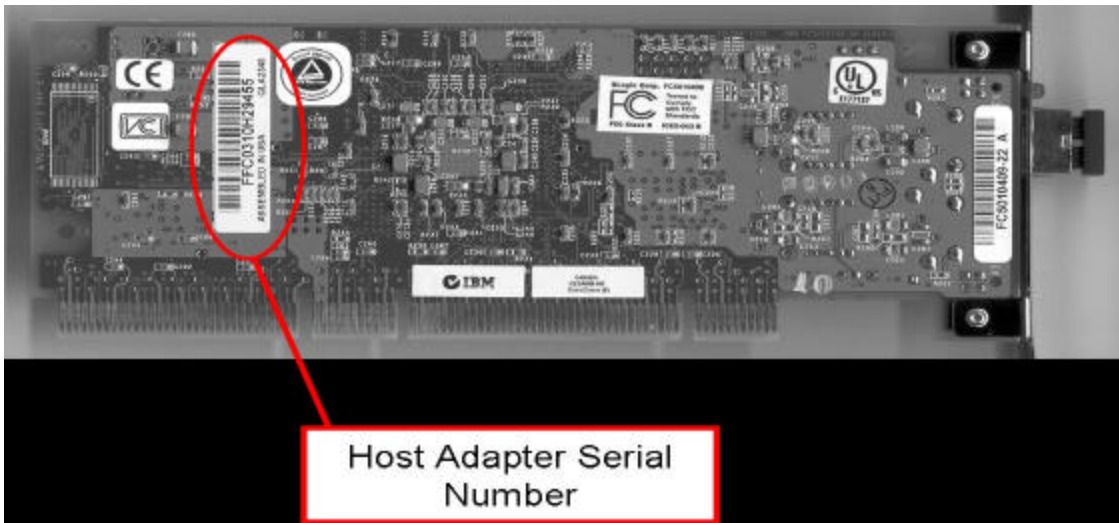
2. During boot time, if you select Control – Q and go into the Host Adapter BIOS and view the serial number reported in the adapter BIOS.



3. The Host Adapter serial number is on the opposite side of the box from the IBM Part number label.



4. To identify the HBA **Serial Number label** on the Host Bus Adapter, look on the solder side of the Host Adapter. The photo below denotes the location of the Serial Number label.



WEB Sites and Support Phone Number

IBM TotalStorage™ Disk Storage Systems Technical Support web site:
<http://ssddom02.storage.ibm.com/techsup/webnav.nsf/support/disk>

IBM TotalStorage™ Marketing Web Site:
<http://www.storage.ibm.com/hardsoft/disk/fastt/index.html>

If you have any questions about this prerequisite go to the following HelpCenter World Telephone Numbers URL: <http://www.ibm.com/planetwide>