

On the IBM NAS boxes, Services for Netware only supports Netware Server Emulation up to 3.12. This is also known as Bindary mode. This is a Microsoft limitation as they designed the interface to support native IPX or Server emulation up to 3.12 only. If the network environment is set up for Novell ver 4.X or higher, Microsoft recommends that the client access the box, using CIFS or IP. Novell ver 4.X or "NDS Mode", is configured via IP connectivity.

**Possible alternatives:** In the event the NAS box will be in a "mixed" IPX/Netware environment (which includes vers 3.12, 4.X and higher) you may be able to set the client software (4.83 Netware Client for Windows ) to dual access mode. This may allow clients to access both, the NDS Netware servers as well as the NAS appliance. Note: The reader is advised that this alternative was not tested in a mixed environment.

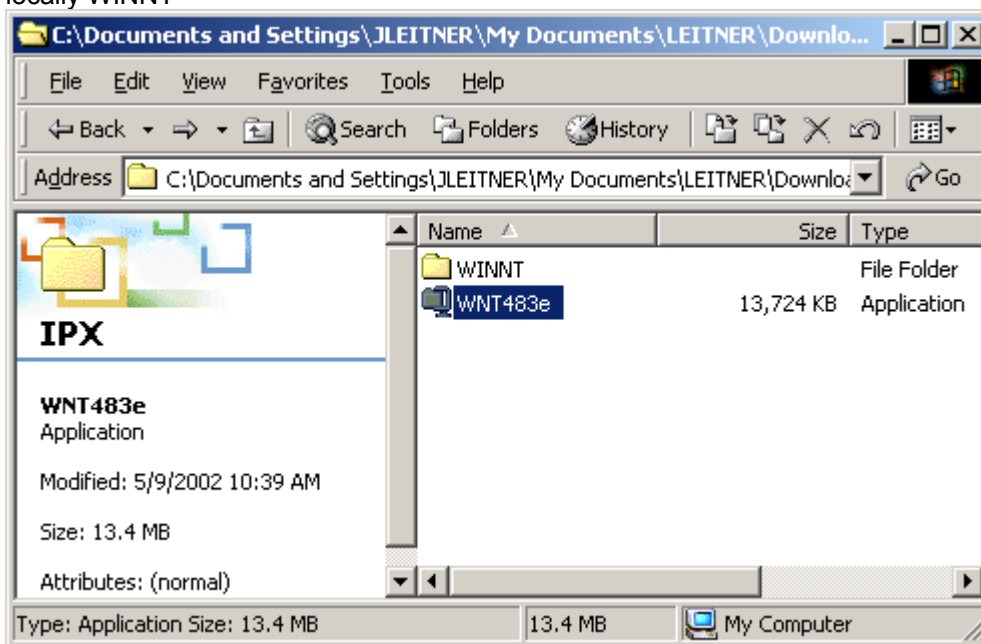
Do not assume the use of "Client Service for Netware" from the standard Windows environment. It is not the client we will be using to attach to the server.

It is recommended to use the "Novell Client for Windows". You can get this client by going to <http://www.novell.com>

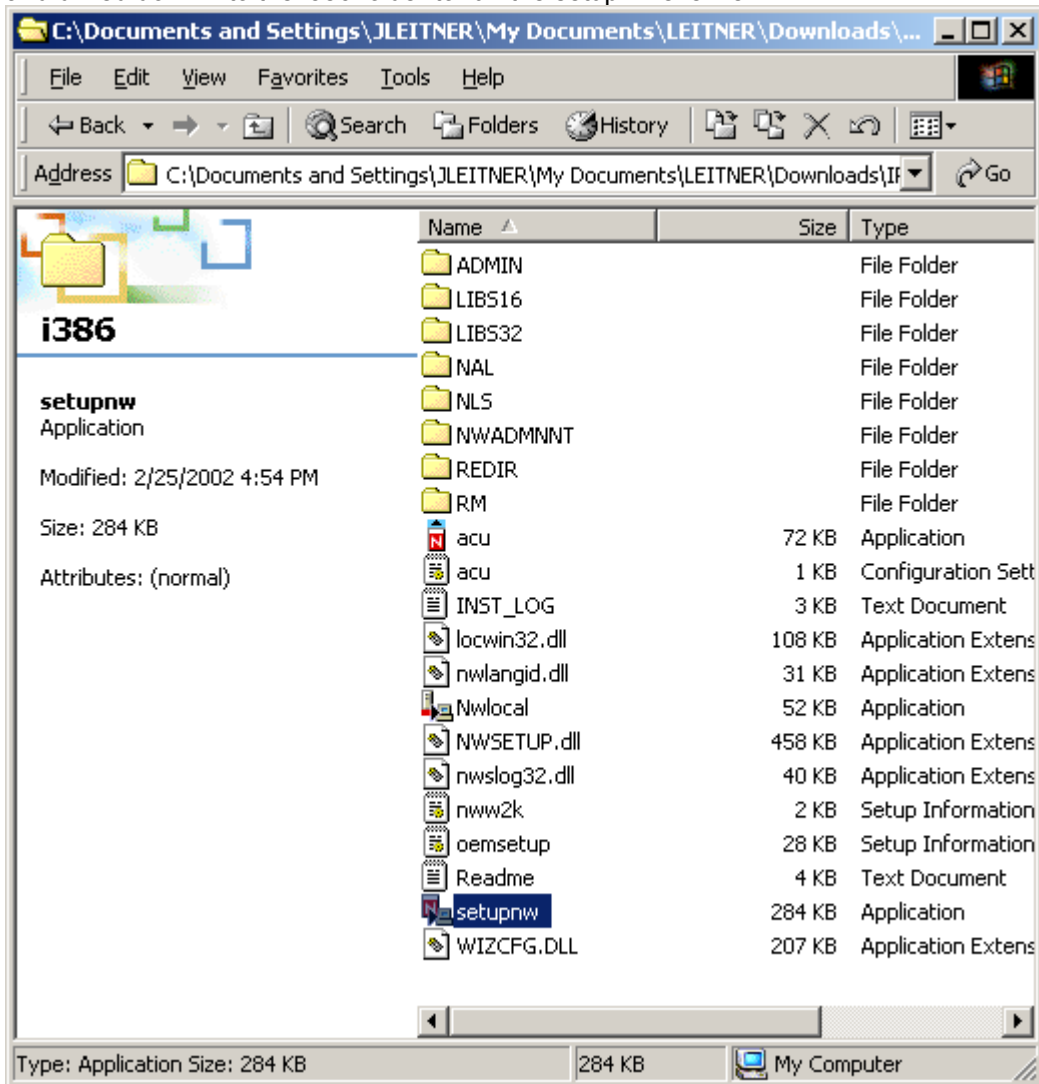
At the website:

- Set up a user account
- Go to the downloads page
- Download the appropriate client

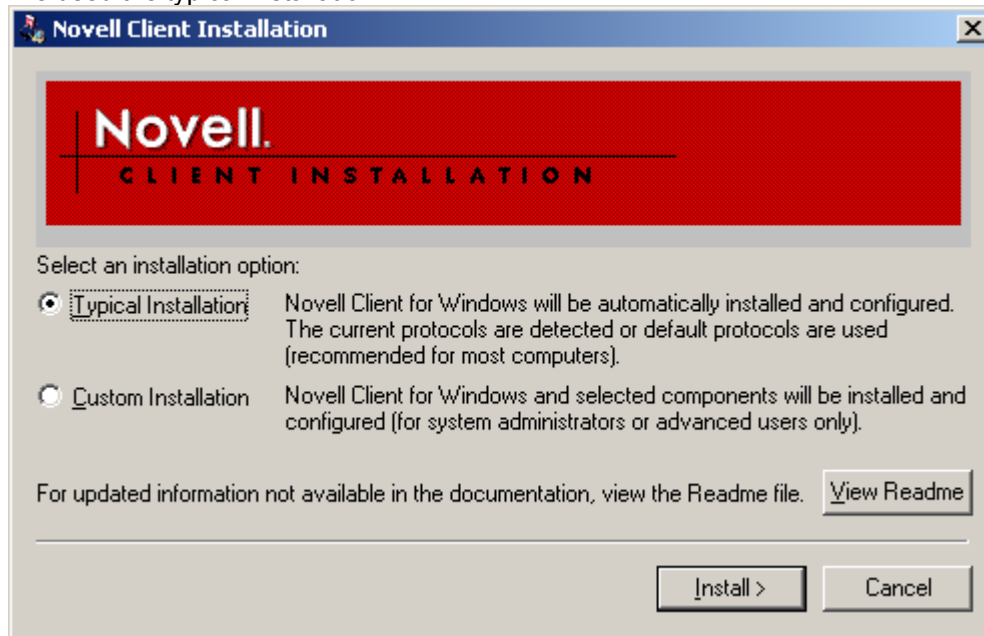
In this example we downloaded a zip file for a W2K client (WNT483e) Unzipped it into a folder locally WINNT



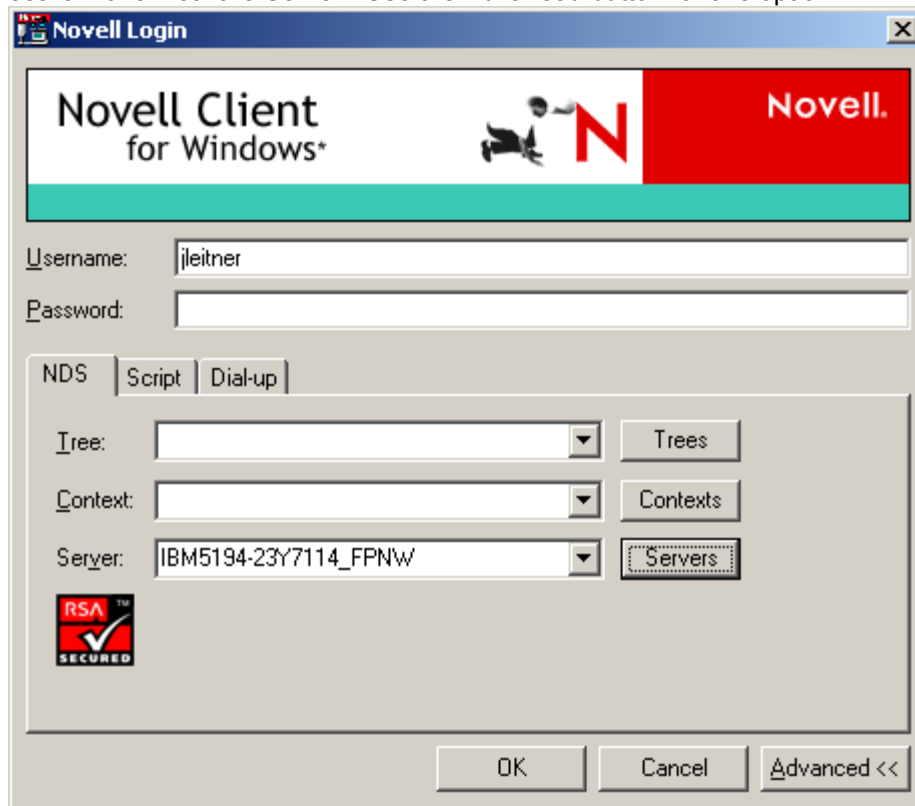
and drilled down into the i386 folder to run the setupnw.exe file



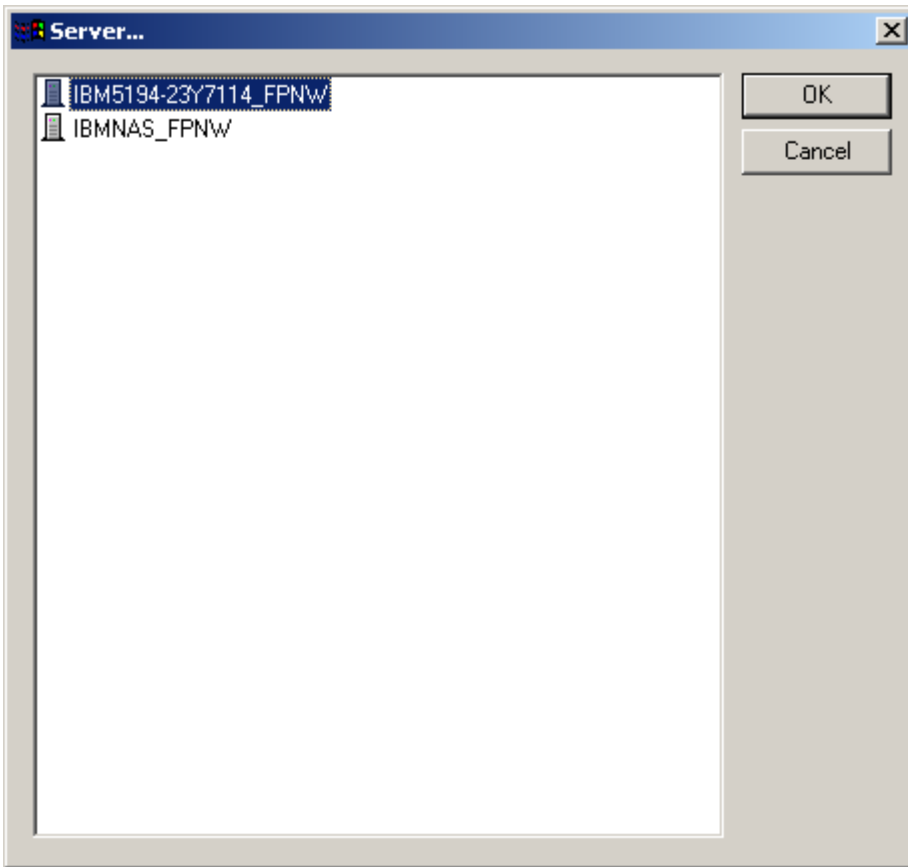
We used the typical installation



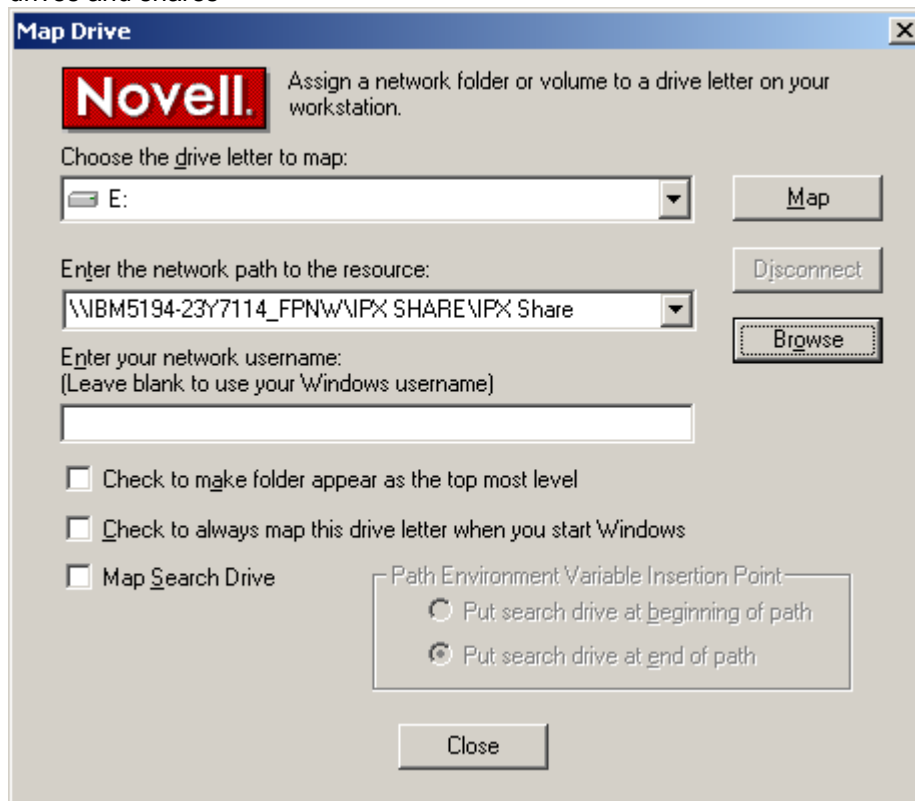
When everything is installed you will be prompted to restart the client. After the client restarts, you will be prompted to log into the Novell network and search for a Netware Server. Use the Advanced button for this option



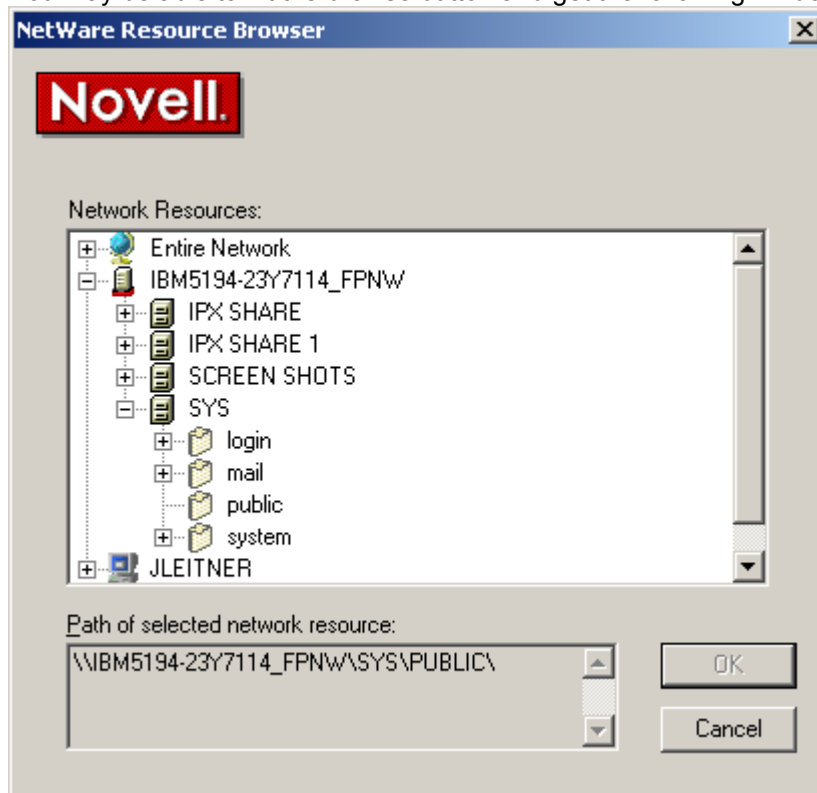
If you hit the Servers button, you should get a display back providing a choice of available servers.



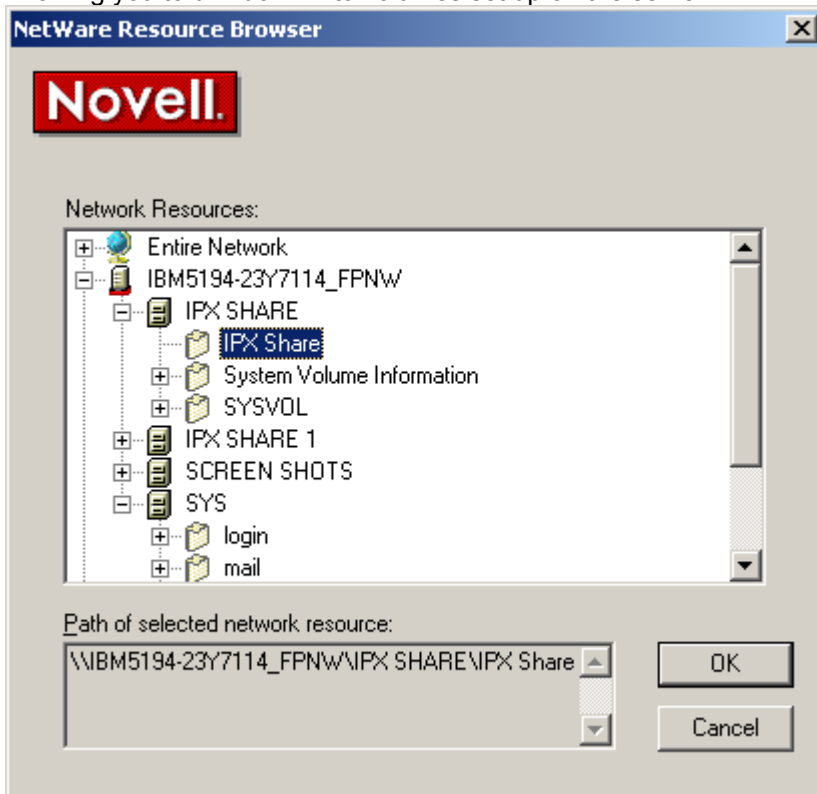
Once your server has been set up and you login. You should be able to map drives and shares



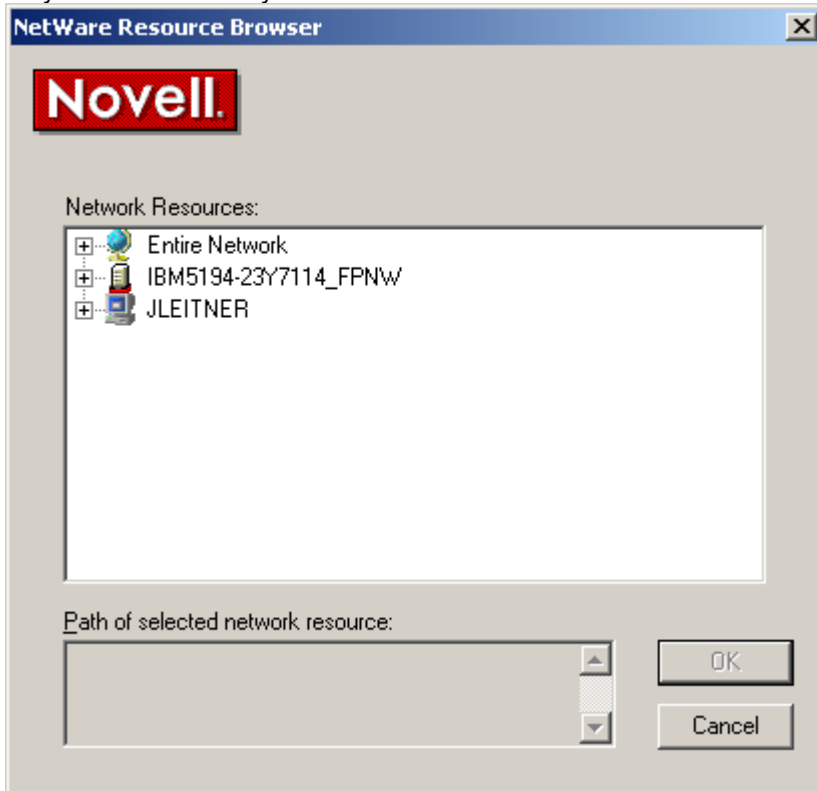
You may be able to hit the browse button and get the following window.



Allowing you to drill down into volumes set up on the server.



Or you can use the My Network Places to also browse available services.



Or browse the My Network Places for the Server or Share you want to connect to.

