



Customer Installation Instructions

TS7520 Patch Update for 3954-CV6 Virtualization Engine

update-ve138203 - Fixes issues with path failover on HP-UX, throughput reports per port, deletion of cancelled import/export jobs, AS400 read element status with IBM 3584 library and values of used disk space vary between reports.

TS7520 Software Version 2.1 (Build 1382)

Patch update-ve138203

TS7520 Patch Update for 3954-CV6 Virtualization Engine

update-ve138203 - Fixes issues with path failover on HP-UX, throughput reports per port, deletion of cancelled import/export jobs, AS400 read element status with IBM 3584 library and values of used disk space vary between reports.

TS7520 Software Version 2.1 (Build 1382)

Patch update-ve138203

Before Installation (Section 1 through 5)

1.0 Machines Affected

This is a field patch installation instruction for the TS7520 3954-CV6 Virtualization Engine.

This patch should be installed on all TS7520 systems, with software version 2.1 (Build 1382 with patch update-ve138202) that do not have patch update-ve138203 installed. TS7520 systems without this patch may experience problems with path failover on HP-UX, throughput reports per port, deletion of cancelled import/export jobs, read element status issues with AS/400 and the IBM 3584 library and values of used disk space vary between reports.

You can check the version of TS7520 software and determine whether or not the patch is already installed, using the VE Console *Version Info* tab (refer to Figure-1).

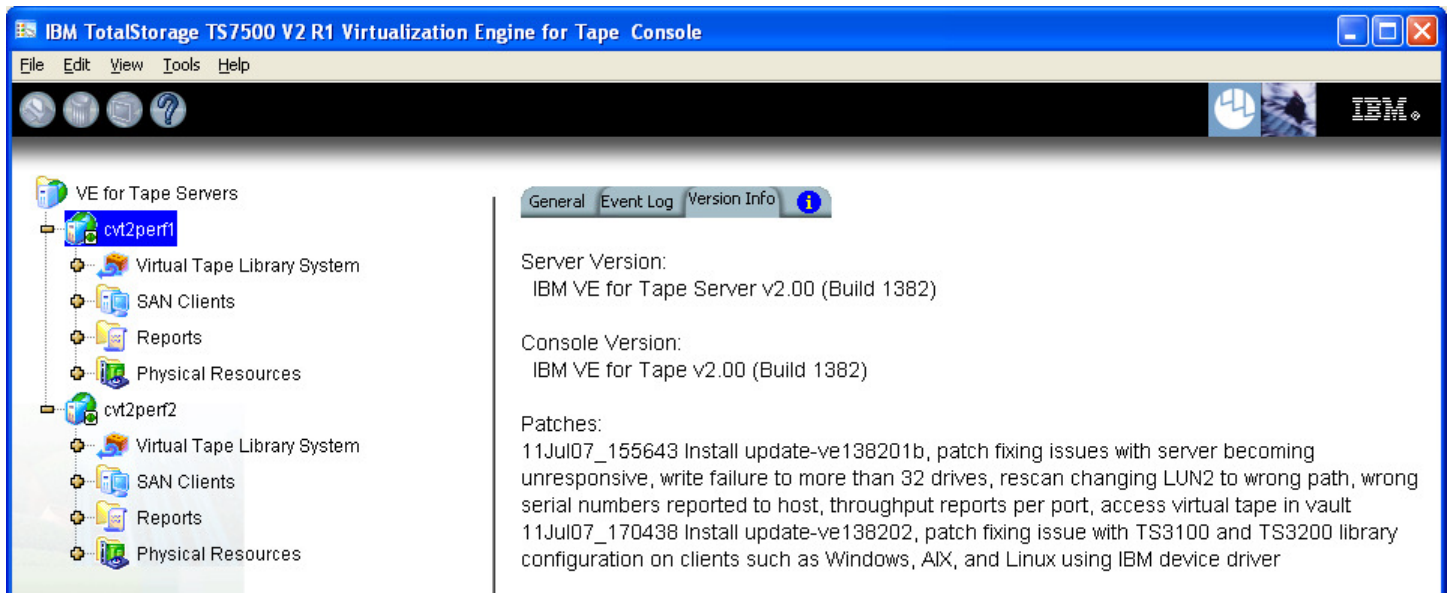


Figure-1

2.0 Prerequisites

Ensure the following patches are already installed on the system:
update-ve138201b / update-ve138202

If using a 64-bit Windows host, ensure the installed level of the IBMTape driver is at a minimum of 6.1.8.2 or higher.

Obtain the latest Installation Instruction and patch files:

Patch filename -- update-ve138203

VE Console Patch filename -- Build1382-Patch03-Console.zip

Installation of this patch is disruptive to normal TS7520 operation. Application of the patch will cause the 3954-CV6 server software to shutdown and restart. Schedule time when the TS7520 system can be taken out of normal operation.

3.0 Preparation

Installation of this patch is disruptive to normal TS7520 operation. Application of the patch will cause the 3954-CV6 server software to shutdown and restart. Schedule time when the TS7520 system can be taken out of normal operation.

Ensure that all host jobs to the TS7520 are quiesced, and complete all pending TS7520 operations.

Transfer the patch file (update-ve138203) into a directory on the VE Console.

For HA configurations (FC-7420 Failover/Failback Enable), use the VE Console to Suspend Failover on both 3954-CV6 servers. Refer to Figure-2 and Figure-3, and use the following procedure to Suspend Failover **on each server (both the upper and lower server if in an HA environment)**.

1. Login to the VE for Tape server (Figure-2), or highlight the VE for Tape server if already connected. The login userid is “vetapeuser” and the password is “veuserpassword”
2. With your mouse Right-click on the VE Console, a context menu will appear, select *Failover*, then select *Suspend Failover*.

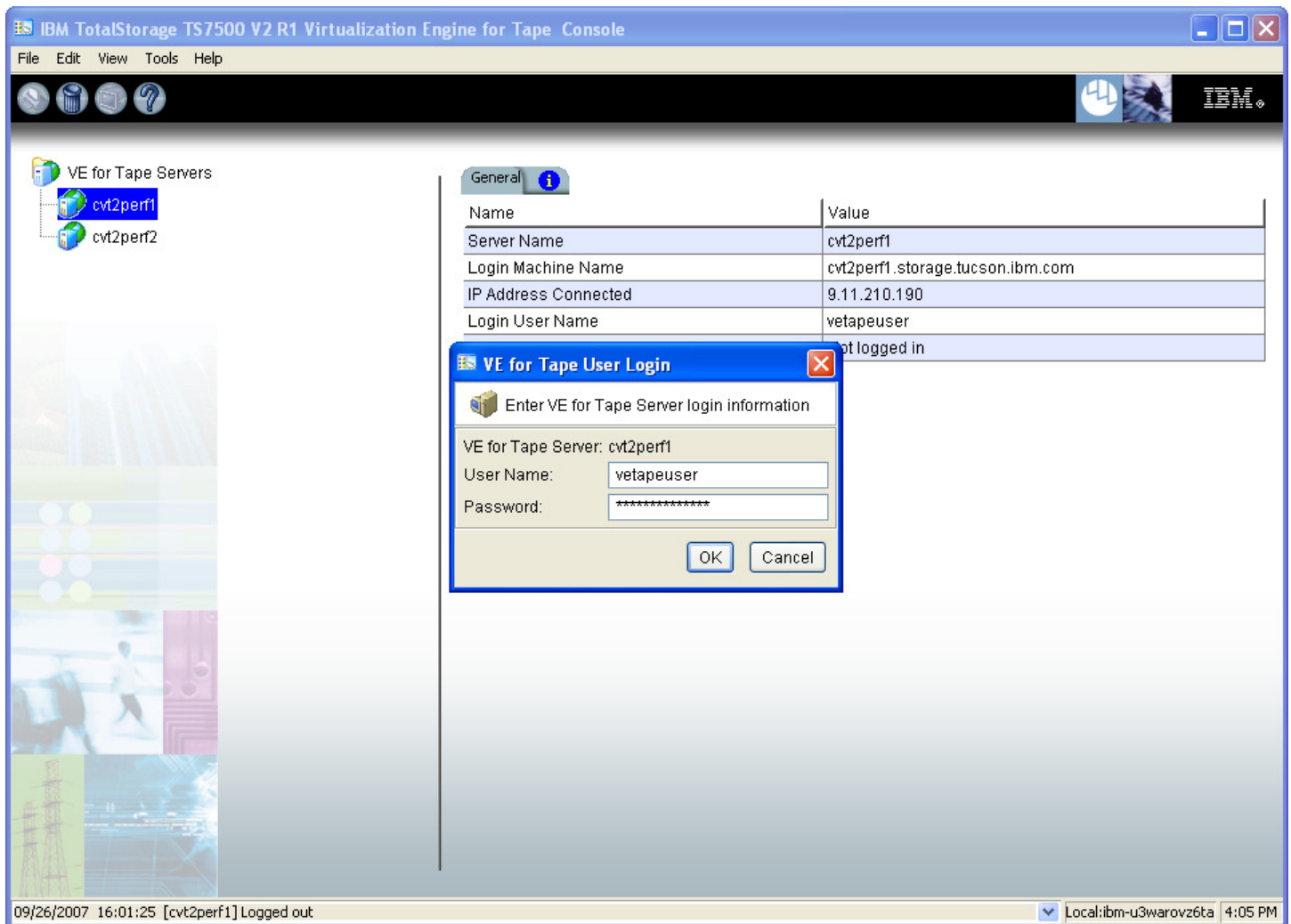


Figure-2

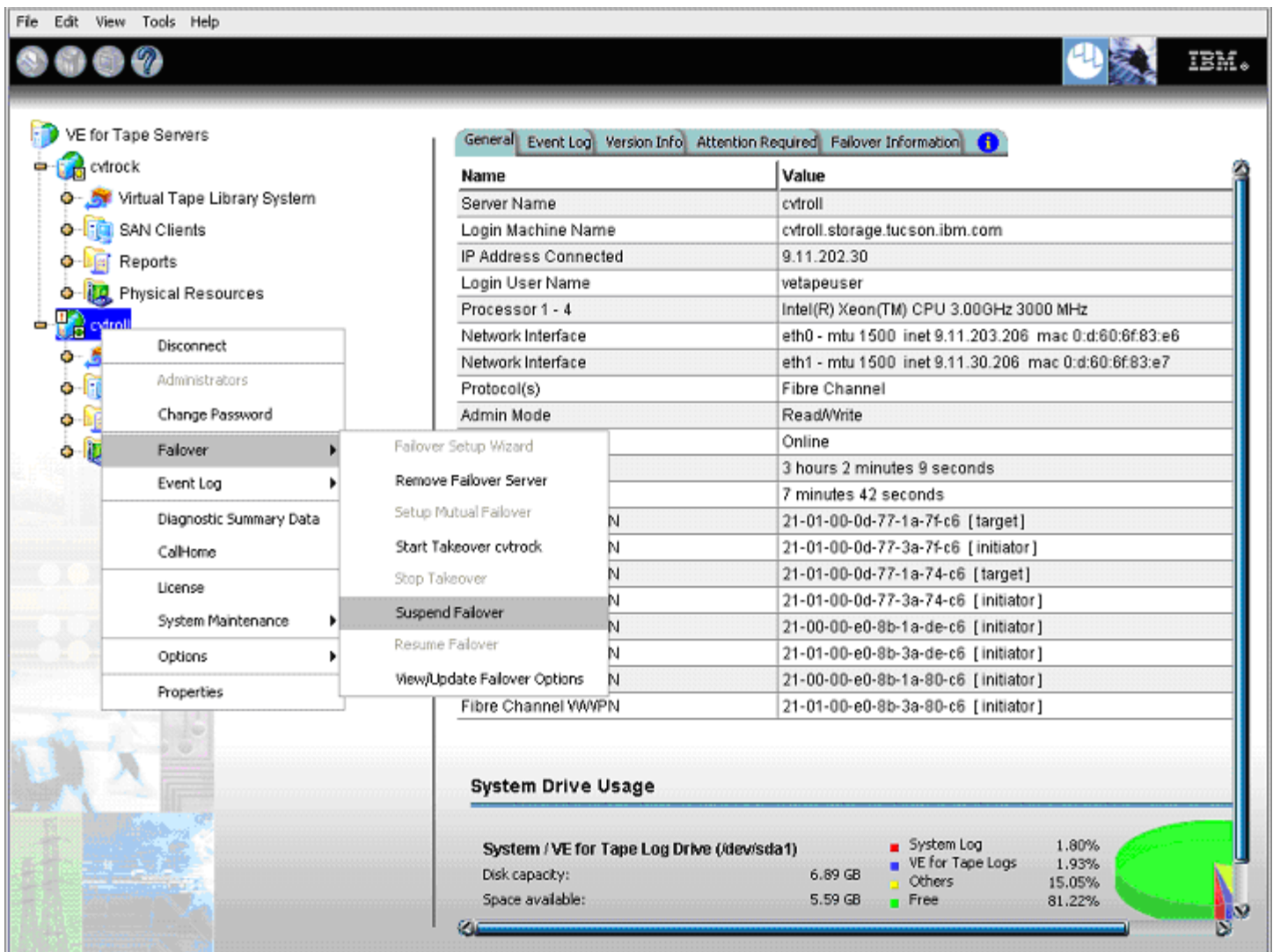


Figure-3

Note: After suspending failover, the CVT server's IP address assigned to eth0 will now be the secondary IP address. Therefore, it is recommended that when you connect via the console to the server you use the hostname (for example Fred.IBM.com) versus the IP address (for example 9.xxx.xxx.xxx), or you may have to re-execute the setipandhostname.pl script.

4.0 Purpose and Description

This patch should be installed on all TS7520 systems, with software version 2.1 (Build 1382), that do not have the patch installed. TS7520 systems without this patch may experience problems with path failover on HP-UX, throughput reports per port, deletion of cancelled import/export jobs, read element status issues with AS/400 and the IBM 3584 library and values of used disk space vary between reports.

5.0 Installation Time

The average time to install this patch on a HA configuration is 1.0 hour. The number of persons required to install the patch is 1.

Installation (Section 6 through 7)

6.0 Details of Installation

6.1 Patch Installation

Use the VE Console *Add Patch* option to install the patch. Refer to Figure-4 through Figure-7 and **use the following procedure to install the patch on each 3954-CV6 VE for Tape server (both the upper and lower server if in an HA environment).**

1. Highlight the VE for Tape server, select the *Tools* button on the Menu bar, and select *Add Patch* (Figure-4)

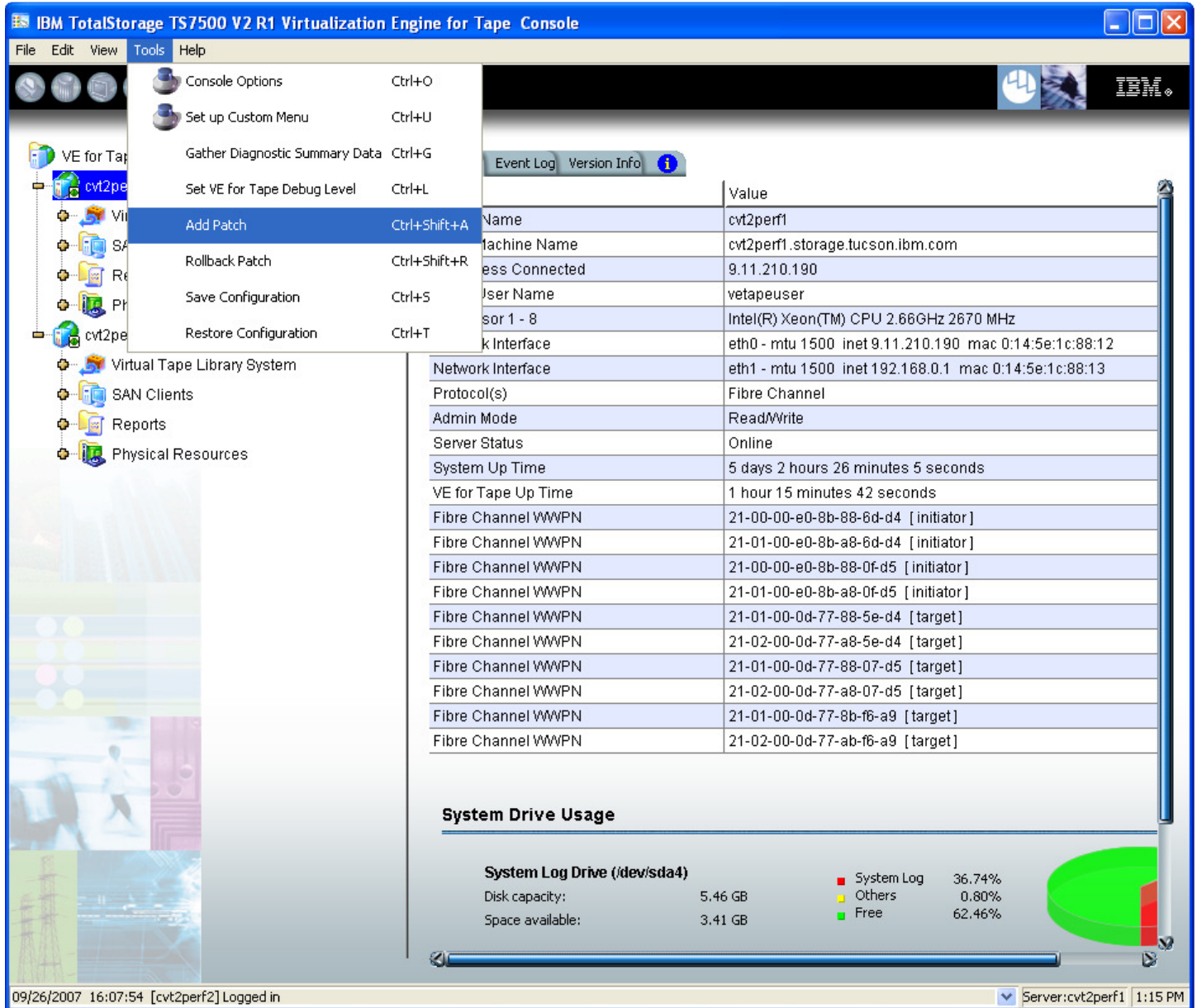


Figure-4

2. Select “OK” when presented with the following Warning Message (Figure-5)

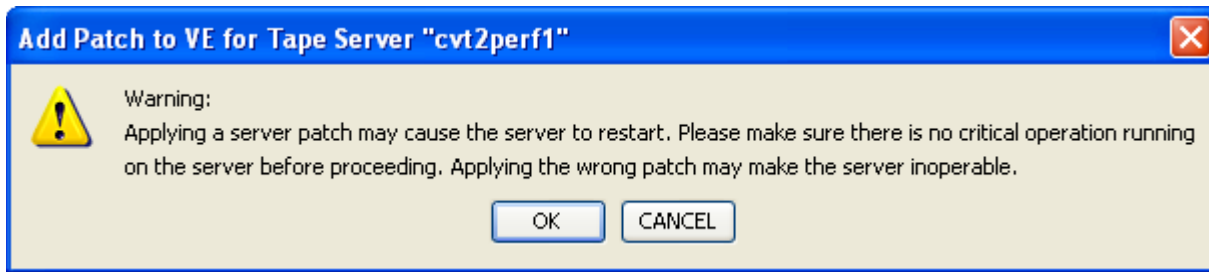


Figure-5

3. When presented with the Select Patch File window (Figure-6), index to the VE Console directory where the *update-ve138203* patch file resides and select the file.

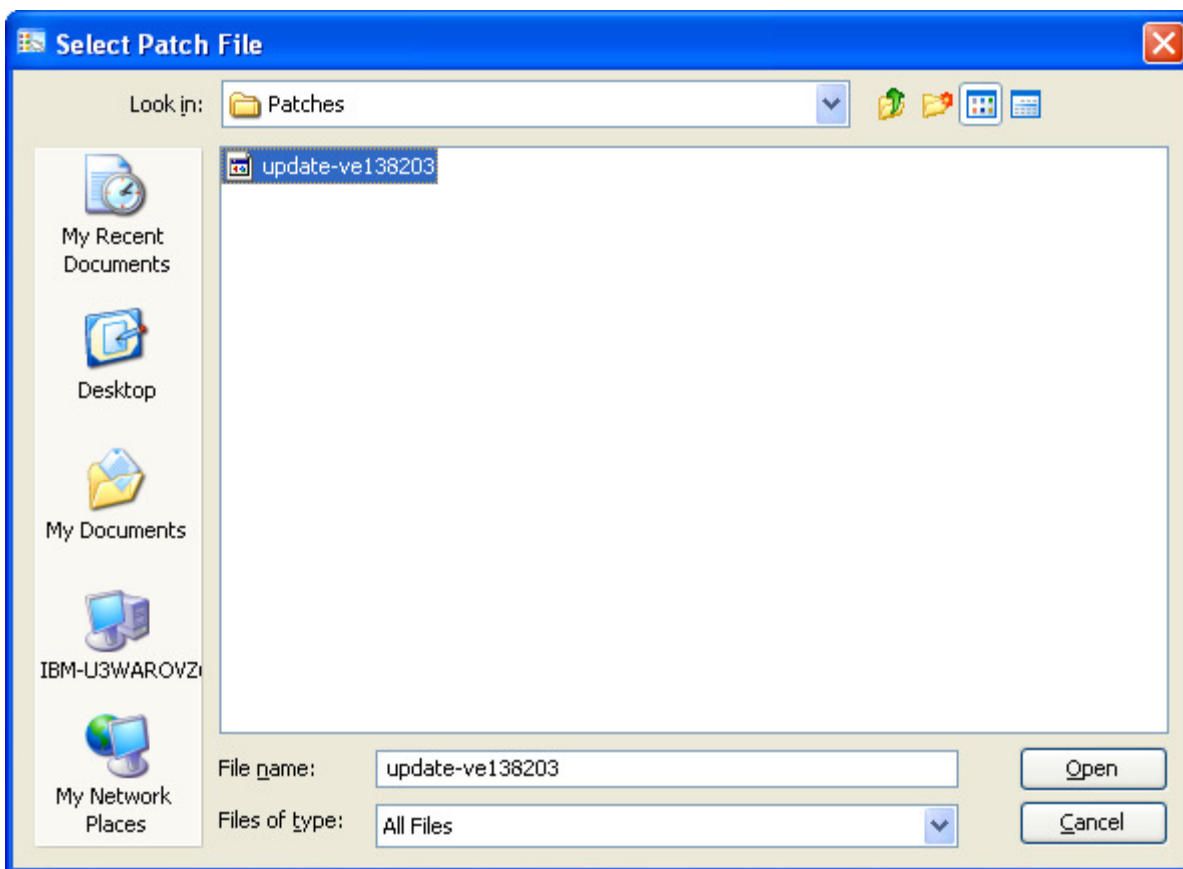


Figure-6

4. When presented with the confirmation window, type “YES” to confirm (Figure-7)

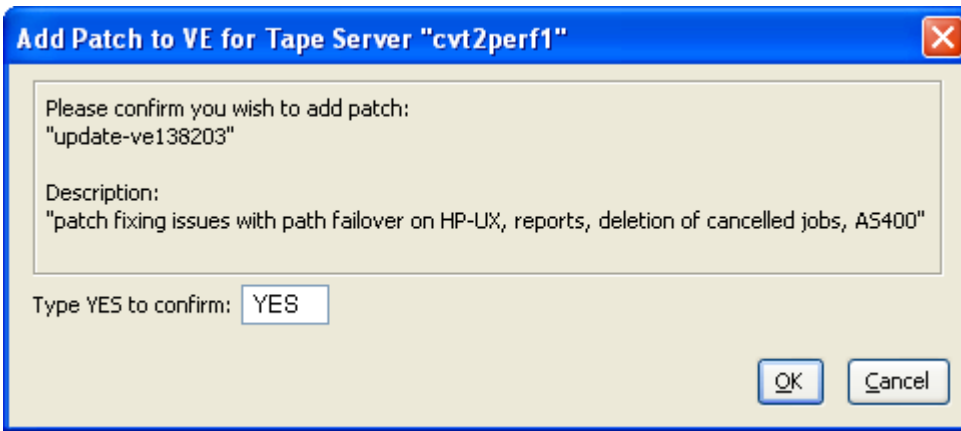


Figure-7

5. The server software will shutdown and restart (Figure-8). The VE Console will be disconnected from the VE for Tape server (Figure-9).



Figure-8

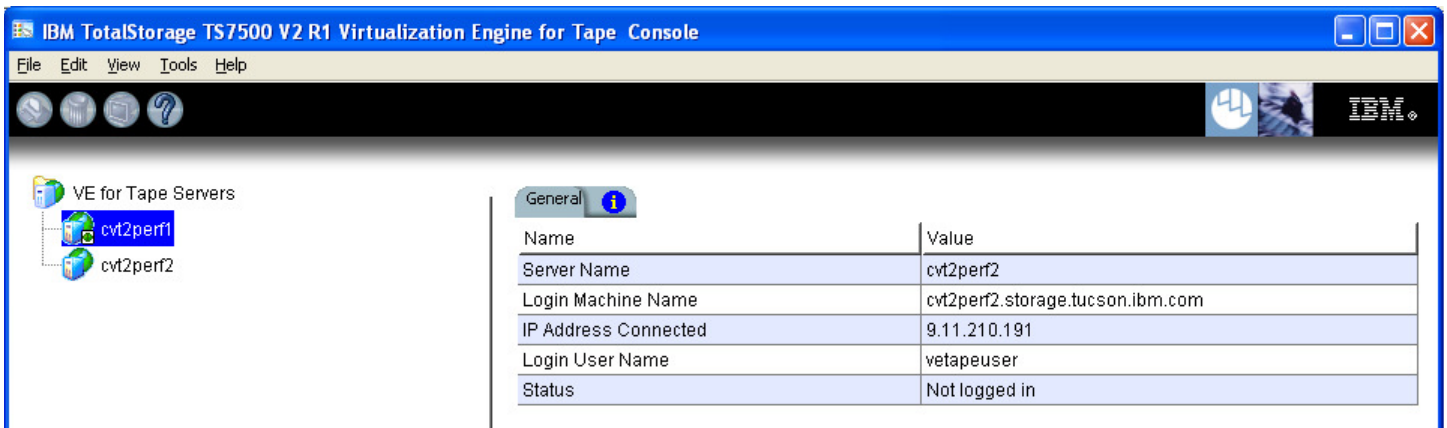
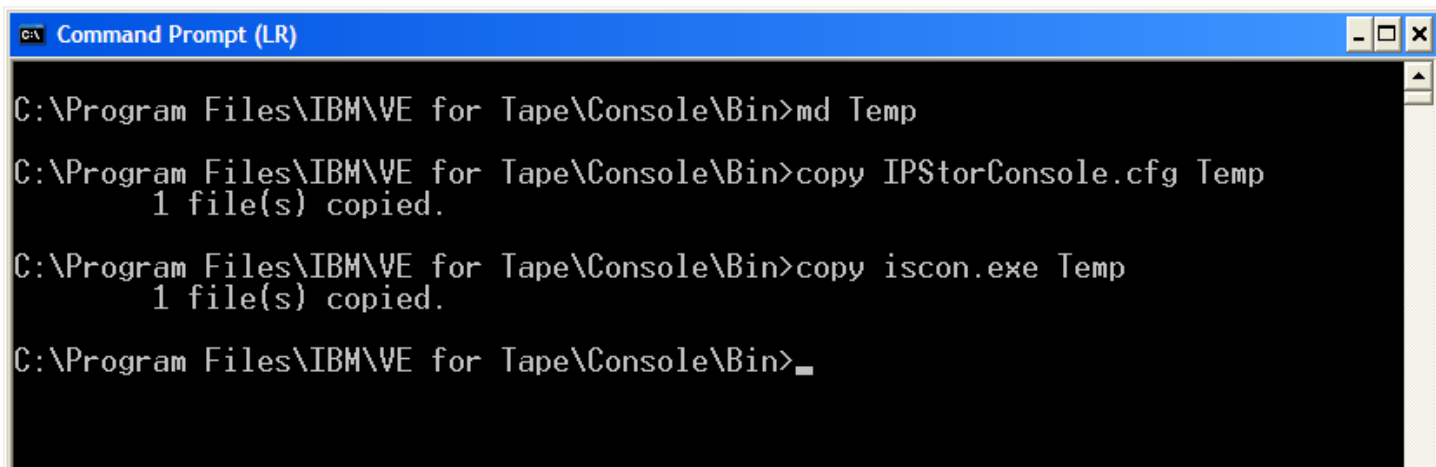


Figure-9

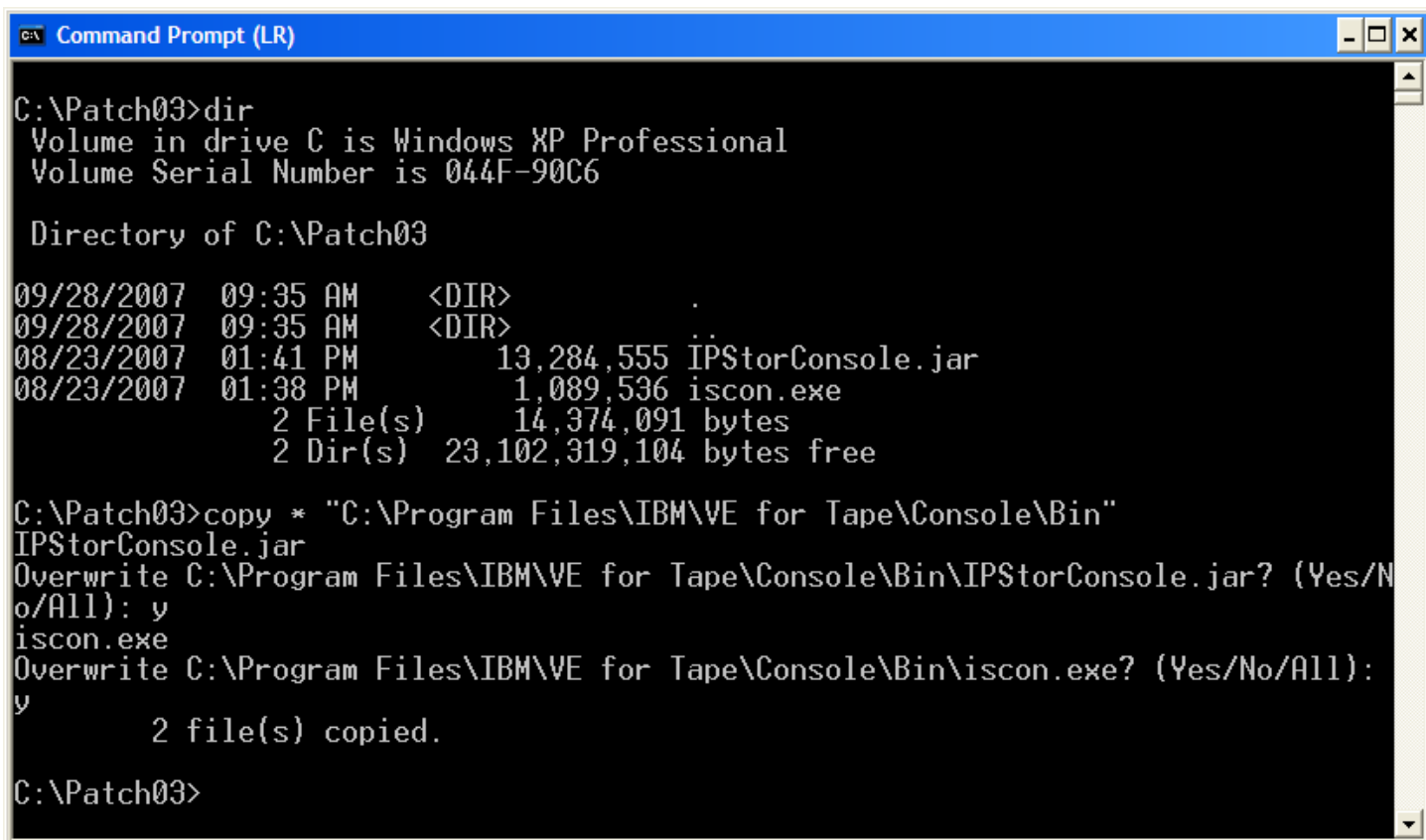
6. At this time, exit the VE Console. Backup the *IPStorConsole.jar* and *iscon.exe* files located in C:\Program Files\IBM\VE for Tape\Console\Bin to a temporary location (Figure-10).



```
C:\Program Files\IBM\VE for Tape\Console\Bin>md Temp
C:\Program Files\IBM\VE for Tape\Console\Bin>copy IPStorConsole.cfg Temp
1 file(s) copied.
C:\Program Files\IBM\VE for Tape\Console\Bin>copy iscon.exe Temp
1 file(s) copied.
C:\Program Files\IBM\VE for Tape\Console\Bin>_
```

Figure-10

7. Extract the contents of the *Build1382-Patch03-Console.zip* file and copy the *IPStorConsole.jar* and *iscon.exe* files into C:\Program Files\IBM\VE for Tape\Console\Bin (overwrite the existing copies which were backed up in step 6 above (Figure-11)).



```
C:\Patch03>dir
Volume in drive C is Windows XP Professional
Volume Serial Number is 044F-90C6

Directory of C:\Patch03

09/28/2007  09:35 AM    <DIR>          .
09/28/2007  09:35 AM    <DIR>          ..
08/23/2007  01:41 PM             13,284,555 IPStorConsole.jar
08/23/2007  01:38 PM             1,089,536 iscon.exe
                2 File(s)      14,374,091 bytes
                2 Dir(s)   23,102,319,104 bytes free

C:\Patch03>copy * "C:\Program Files\IBM\VE for Tape\Console\Bin"
IPStorConsole.jar
Overwrite C:\Program Files\IBM\VE for Tape\Console\Bin\IPStorConsole.jar? (Yes/No/All): y
iscon.exe
Overwrite C:\Program Files\IBM\VE for Tape\Console\Bin\iscon.exe? (Yes/No/All):
y
        2 file(s) copied.

C:\Patch03>
```

Figure-11

8. After the VE Console patch files have been applied, restart the VE Console (Figure-12).

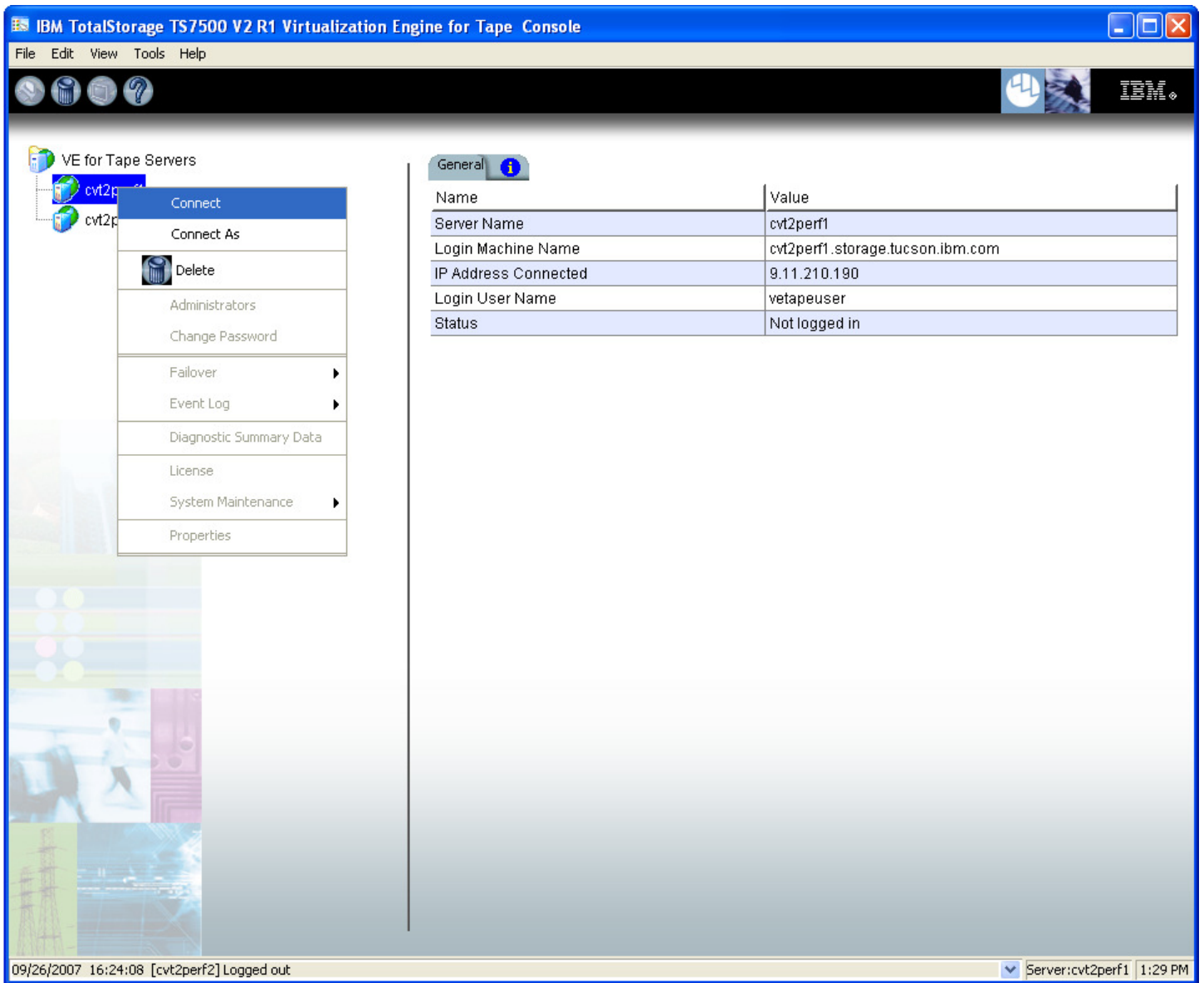


Figure-12

9. Check the TS7520 Event Log of each server, using the VE Console *Event Log* tab, to confirm the successful installation of the patch (Figure-13). There should be an Event Log entry stating the “Patch update-ve138203 installation completed successfully”. **Note:** you may have to scroll through the log in order to find this entry depending on the configuration of your CVT.

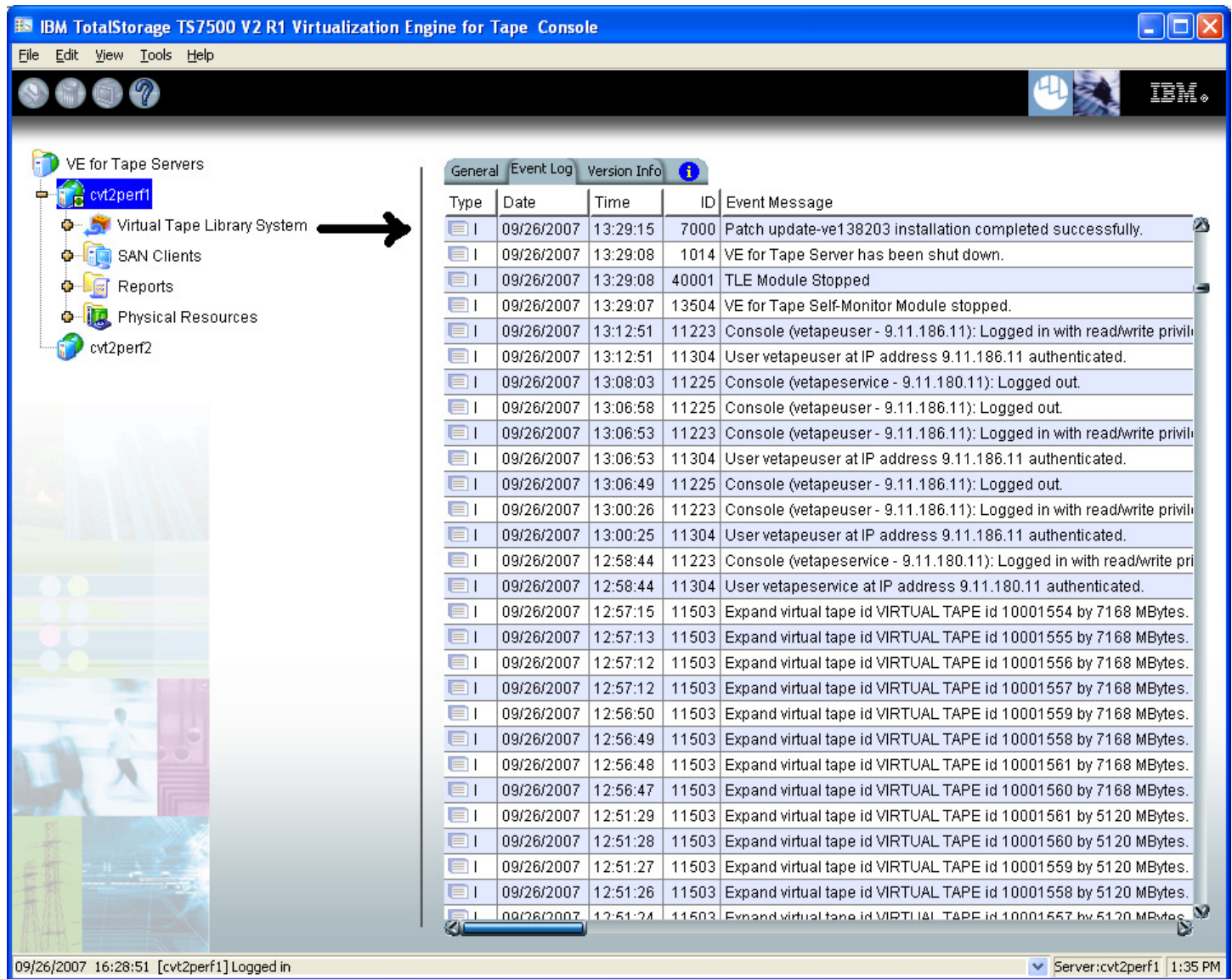


Figure-13

6.2 Resume Failover

For HA configurations (FC-7420 Failover/Failback Enable), use the VE Console to Resume Failover on both 3954-CV6 servers. Refer to Figure-3 and the following procedure to Resume Failover **on each server (both the upper and lower server if in an HA environment)**.

1. Highlight the VE for Tape server
2. With your mouse Right-click on the VE Console, a context menu will appear, select *Failover*, then select *Resume Failover*.

7.0 Test Procedure

7.1 Check Patch Installation

Check the TS7520 Event Log of each server, using the VE Console *Event Log* tab, to confirm the successful installation of the patch (refer to Figure-11, top entry in log). There should be an Event Log entry stating the “Patch update-ve138203 installation completed successfully”. **Note:** you may have to scroll through the log in order to find this entry depending on the configuration of your CVT.

If the patch installed successfully the customer can resume normal operations.
Contact the IBM Support Center if the patch installation did not complete successfully.