



IBM System i™

# System i Announcement Update

System i Premier User Group  
June 13<sup>th</sup> 2007



**Nigel Adams**  
**IBM System i Product Manager**  
[nigel\\_adams@uk.ibm.com](mailto:nigel_adams@uk.ibm.com)

# Today's System i Solutions Portfolio

**UNIS** 清华紫光



MISYS

**Manhattan**  
Associates.



INFORMATION TECHNOLOGY



**IBS**  
Powerful software  
Passionate people

**HARRISDATA**

**Zend**  
The php Company



COMMERCIALWARE

**TietoEnator**  
Building the Information Society



**E G**  
EDB GRUPPEN  
Danmark

**Jack Henry**  
& ASSOCIATES INC.

**ORACLE**

**SILVERLAKE**

**LAWSON**

**BlueWare**  
Strategic HealthWare Solutions



**NGS**  
NewGeneration  
Software, Inc.

**LAOSA**



**3COM**

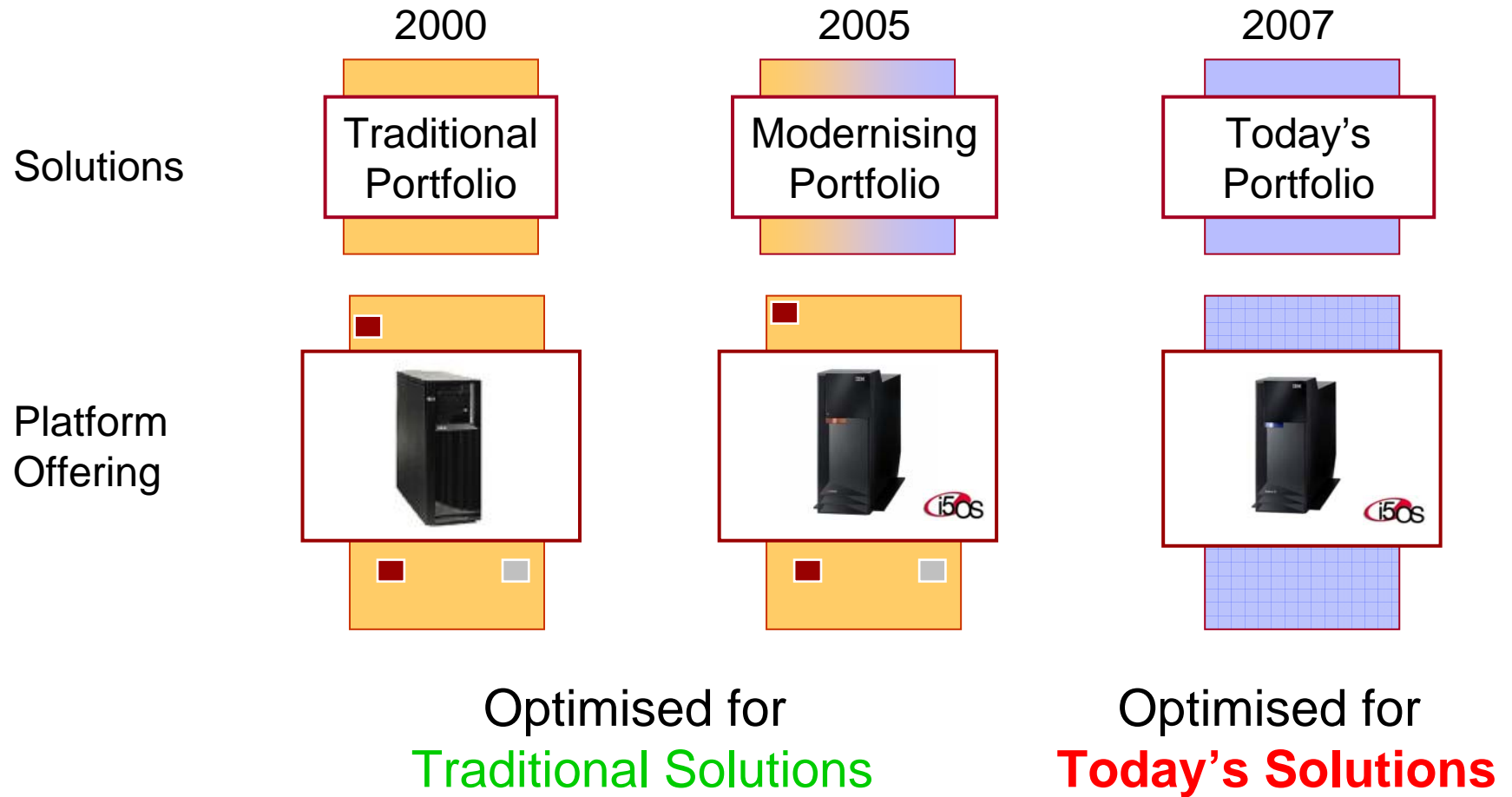
**Information  
Builders**

Over 5,800 solutions from over 2,500 ISVs

Initiative for Innovation delivered over 1,100 new & enhanced i5/OS solutions in last 2 years

- ✓ Innovation Centres
- ✓ Technical review boards
- ✓ Porting/migration services

# Transforming System i Solutions



## New System i Offerings

THE  
IBM SYSTEM i  
EXPRESS

IT'S SIMPLE.



- ✓ **New 515 Express smaller business offering**
- ✓ **New 525 Express for mid-sized businesses**
- ✓ **Powering new solutions with up to 6x performance improvement**
- ✓ **Dramatic new flexibility in i5/OS licensing**
- ✓ **Reduced Disk storage price**
- ✓ **New software functions**

 **express  
advantage™**

## IBM System i Express: It's Simple

# IBM System i5

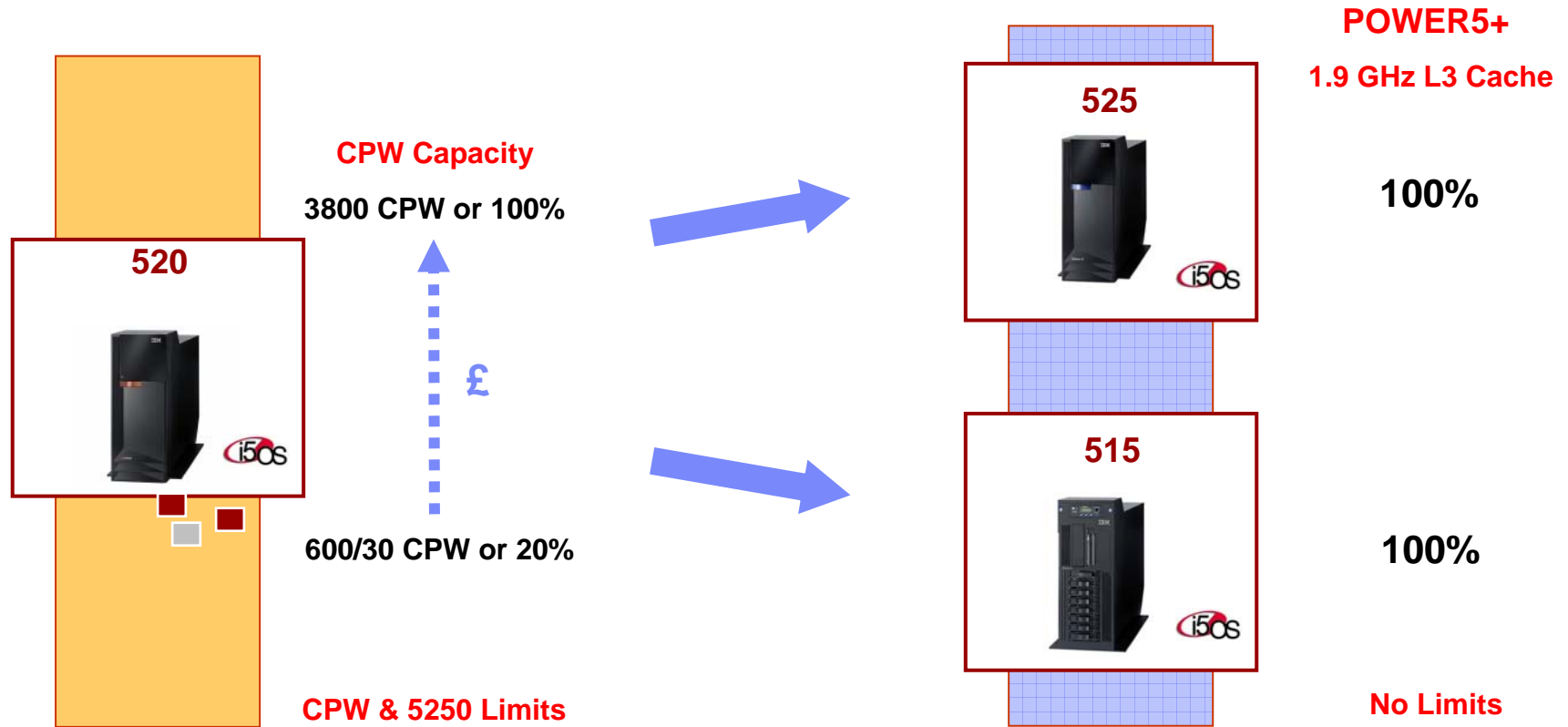
- At the start of April



	520	550	570	595
<b>Processor and Max CPW</b>	1, 1/2-way 1.9GHz POWER5+ 7,100	1/4-way 1.9GHz POWER5+ 14,000	2/16-way 2.2GHz POWER5+ 58,500	8/64-way 1.9GHz POWER5 184,000
<b>Key Changes</b>	POWER5+ Performance  Accelerator & CoD New Collaboration Edition	POWER5+ Performance  New High Availability Edition  New Capacity BackUp Edition	Leading POWER5+ Performance  Simpler Structure & Licensing  New CBU Editions	Leading POWER5 Performance  Expanded I/O  New HA Edition  New CBU Editions
<b>i5/OS Release</b>	V5R3 & V5R4	V5R3 & V5R4	V5R3 & V5R4	V5R3 & V5R4



# Transforming System i Offerings



Optimized for **Traditional Solutions**

*Offering priced by CPW  
& 5250 Capacity*



Optimized for **Today's Solutions**

*Server price & OS license by user*

# IBM System i Express: It's Simple

THE  
IBM SYSTEM i  
EXPRESS

IT'S SIMPLE.



- **Easy-to-manage, easy-to-secure and highly reliable systems with proven industry solutions that fit the needs of mid-sized business**
  - System i 515 Express featured for small businesses with up to 40 users starting at £5,168.
  - System i 525 Express featured for mid-sized businesses with increased expansion options such as Capacity on Demand
- **Want a better alternative to Windows-based servers?**
  - System i Express helps you get the most out of your IT investments now, and helps you exploit them as you grow.
- **Want to run *your* business not a computer business?**
  - System i Express helps you stay focused on your business, not managing server farms, fixes and anti-virus software.
- **Want a system that just keeps running?**
  - System i Express is known as one of the most reliable and secure business systems in the industry.

## System i Value

- The System i Express offers a variety of expansion options to help a company maximize return on its IT investments.
- Unlike Windows-based servers, the System i Express is typically used to run multiple business applications on the same system.
- That helps a company better utilize its IT assets today, while avoiding the costs of deploying a new server every time the business needs another application.

# Introducing the System i 515 & 525 Express



## 515 Express

- 5 – 40 users
- POWER5+ 1.9 GHz L3 Cache
- 1 or 2-way
  
- Up to 8 x 70 GB disks
- Up to 16 GB memory
- No HSL or Fibre Channel
  
- i5/OS V5R4 – SW Group P05

## 525 Express

- 30 - unlimited users
- POWER5+ 1.9 GHz L3 Cache
- 1/2-way with CoD
  
- Up to 39 TB disk
- Up to 32 GB memory
- HSL & Fibre Channel
  
- i5/OS V5R4 – SW Group P10



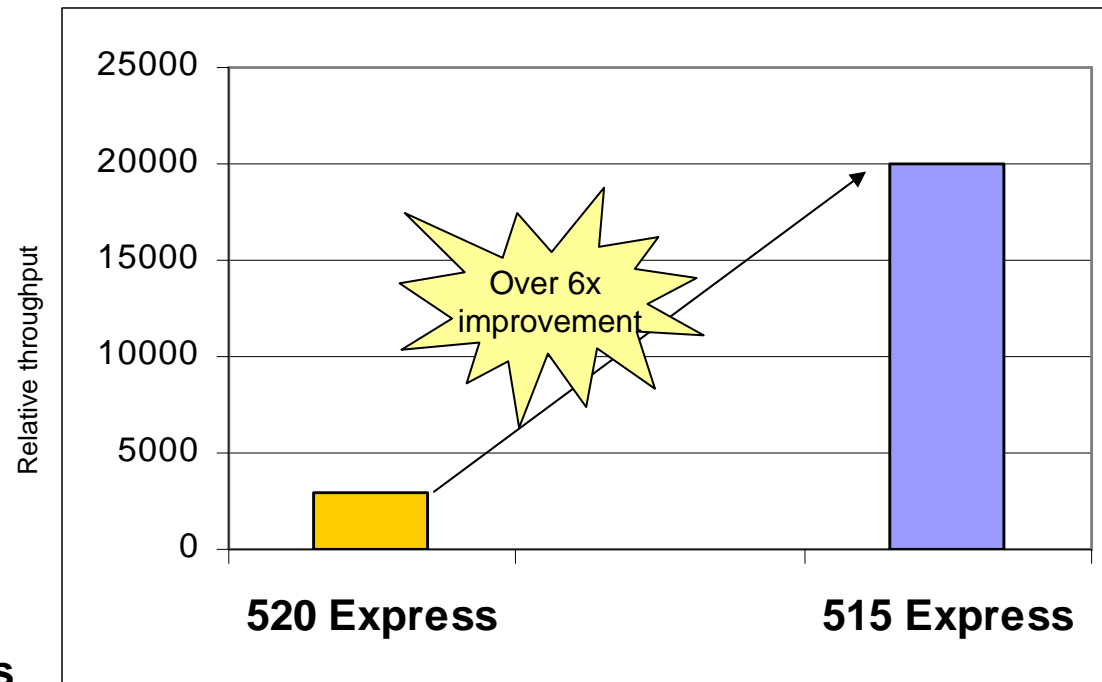
# System i Express

Differentiating Offering Attributes for Small & Mid-sized Businesses

	515 Express	525 Express
<b>Base software maintenance</b>	3 months Upgrade to 1 or 3 years	1 year Upgrade to 3 years
<b>Base hardware warranty</b>	9x5 NBD Upgrade to 24x7	24x7 Same Day
<b>Microsoft Windows Server Integration</b>	Yes, via iSCSI	Yes, via iSCSI
<b>Virtualization (LPAR: i5/OS, AIX, Linux)</b>	Yes, Optional	Yes, Included
<b>Configure to order</b>	Yes, with 20 most popular options	Yes, with full range of options
<b>Upgrade from previous systems</b>	No	Upgrade from 810 and 520
<b>Upgrade within system</b>	Upgrade from 1-way to 2-way	Activate 2-way via Capacity on Demand

# Deliver Industry Leading Performance - Small Business

Java™ Performance



**520 Express**  
(600 CPW)

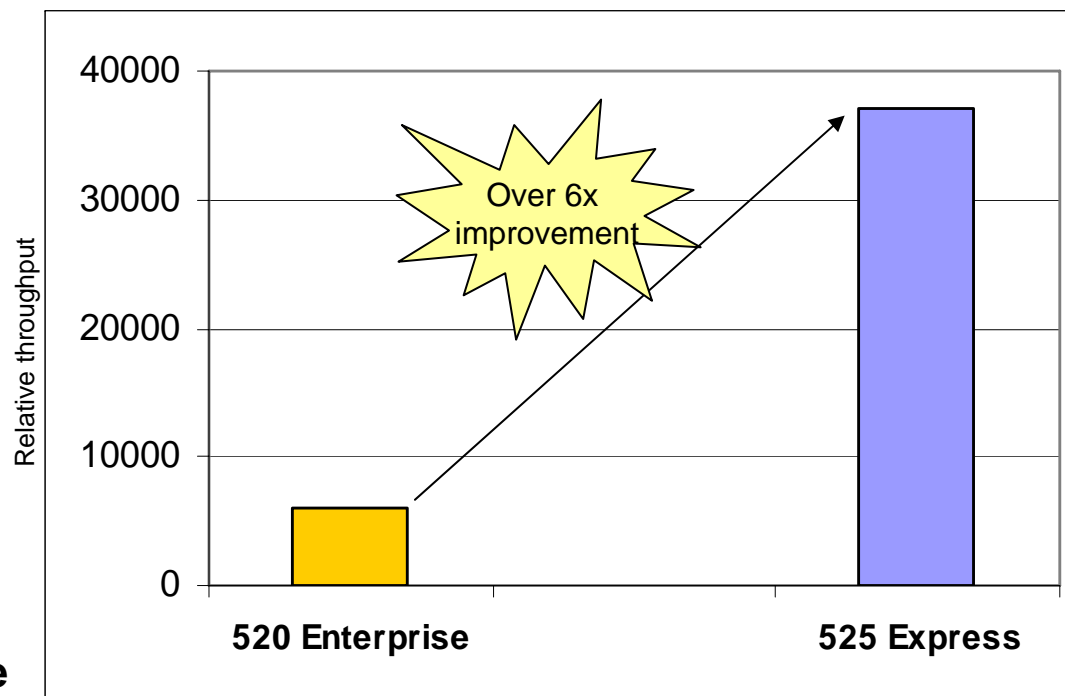


**515 Express**  
(1-way)



# Deliver Industry Leading Performance - *Mid-sized Business*

### Java™ Performance



**520 Enterprise**  
(1200 CPW)



**525 Express**  
(1/2-way)

i5OS V5R4

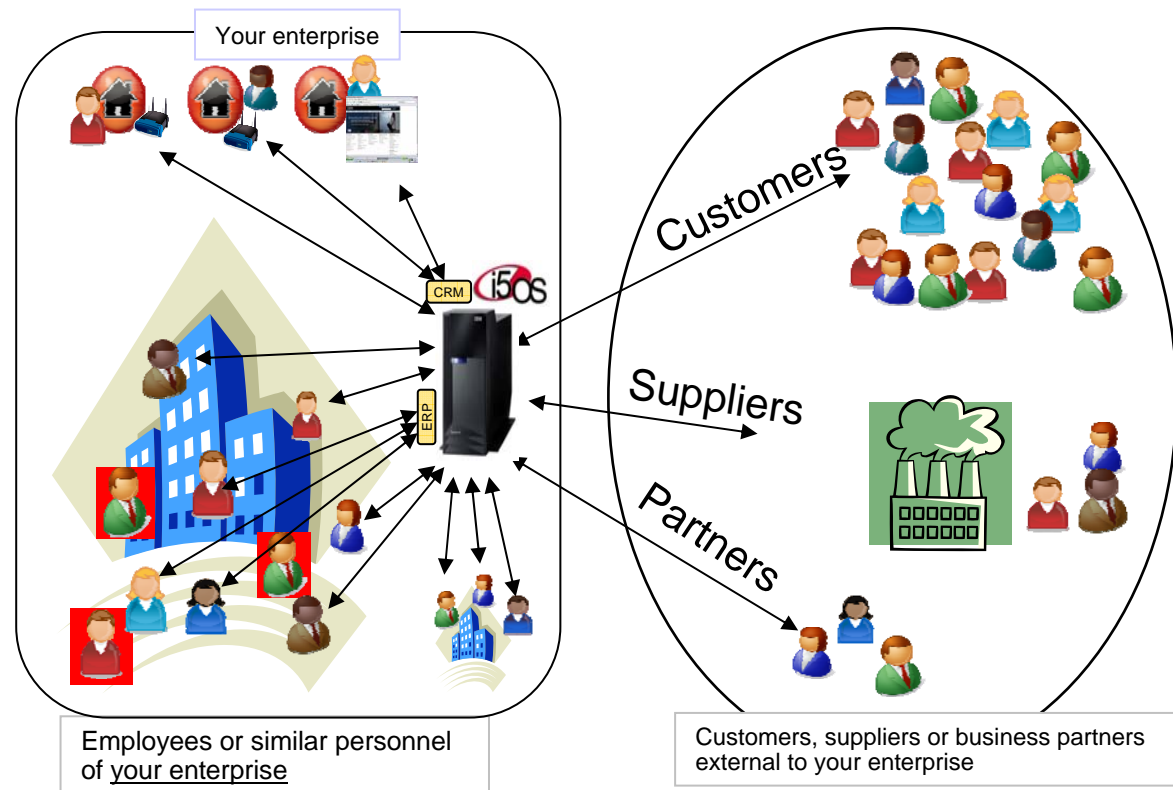
# Revolutionise i5/OS Licensing

An **i5/OS user** is a person who accesses i5/OS

- Exchanges credentials (for example, a userid/password)
- Directly with i5/OS or with application on i5/OS

- Every i5/OS user in your enterprise needs an entitlement
- Regardless of:
  - Location
  - Connection type
  - Application accessed
  - User interface
  - How often

Licensing now amended to only be needed for **concurrent** users



# i5/OS Licensing by User

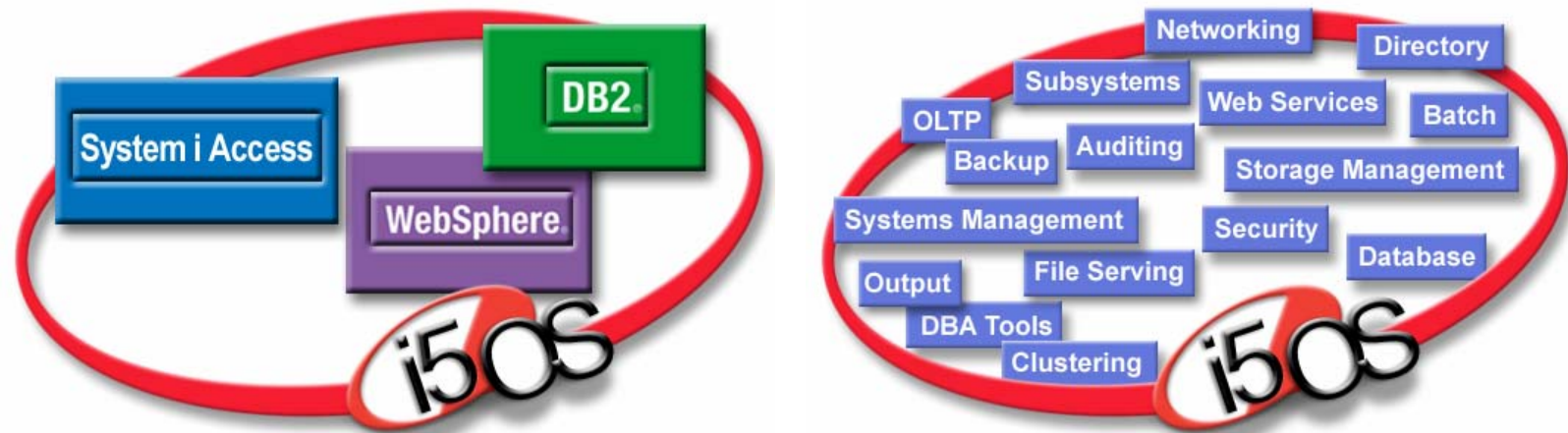
## Local Bank Example



- ✓ One license entitlement for each employee
- ✓ One price covers all external access users



## Integrated Software License



- ✓ IBM's leading integrated operating system
- ✓ IBM's flagship SQL-compliant database
- ✓ IBM's premier Web application server
- ✓ IBM's world class support
- ✓ ... plus all the value of System i Access
- ✓ System i Express: It's Simple

# i5/OS Prices



515



525



<b>i5/OS User entitlements in base offering</b>	<b>5</b>	<b>30, 150 or unlimited</b>
<b>System i Access</b>	<b>Included</b>	<b>Included</b>
<b>Packs of user entitlements</b>	<b>Pack of 5 = £854.56</b>	<b>Pack of 10 = £1,709</b>
<b>i5/OS External Access</b>	<b>£2,892</b>	<b>£2,892</b>
<b>Unlimited i5/OS User Entitlements</b>	<b>N/A</b>	<b>£34,184</b>
<b>i5/OS Processor Entitlement for 2<sup>nd</sup> processor</b>	<b>£2,103</b>	<b>£6,244</b>

# System i 515 Express



Three simple packages, with configure to order options....



### *New customer*

- 1-way
- 1 GB Memory
- 2 x 70GB Disk
- 36 GB 4mm tape
- 3 months SWMA
- 5 i5/OS user entitlements

Starting at: £5,168

### *Smaller, current customer*

- 1-way
- 1 GB Memory
- 2 x 70GB Disk
- QIC tape
- 1 year SWMA
- 5 i5/OS user entitlements
- Query & Query Mgr

£6,543

### *Performance intensive apps*

- 2-way
- 4 GB Memory
- 4 x 70GB Disk
- 36 GB 4mm tape
- 1 year SWMA
- 5 i5/OS user entitlements
- Query & Query Mgr

£15,054

# 515 Express: Flexible, Configure to Order Options

- Configure the Express package *on the initial order* to match customer requirements first time
- Add options later to handle future growth
- Keep it simple with the most popular options small businesses need



## Options

- Tower or Rack (Selected Racking Features)
- Acoustic Rear Cover, Disk Drive Security Kit
  
- 2-way Upgrade
- Up to 16 GB Memory
- Up to 8 x 70GB 15K RPM Disks
- 40MB Cache for Imbedded Disk Controller
- Enable 4 Additional Disk Slots & Controller
- Externally Attached Tape/Optical
- QIC 30GB Internal Tape
- 4mm 36GB Internal Tape
- IOP (#2844)
  
- LAN 1Gb, 10Gb
- WAN 2-port or 4-port
- Twinax Adapter
- iSCSI Adapter
- Advanced Power Virtualization
  
- Redundant Power Supply
- Power Cords, Communications Cables
- UPS Control Cable
- Language Features

# Distributor: Automate Business Processes

## - 5 user ERP

### Wintel

- Windows Server
- Dell 1900

**\$5,800**

- Want to add another application? Add another server.
- Need more people to manage patch and virus management?

### System i 520

- i5/OS
- 600/30 + Accelerator

**\$26,000**

### System i 515

- i5/OS
- POWER5+ 1.9 GHz

**\$ 8,500**



- + *Want to add another application as your business grows? Go ahead!*
- + *Want to spend less time on virus / patch management and more time running your business? No problem!*





## 9406 Model 525

**Physically identical to 520 1/2-way system**

**Same memory, I/O options as 520**

**Same 24x7 warranty as 9406 & 9405-520**

**Same Build-to-order philosophy as 9406-520**

- **Full application flexibility -- ready for your System i workload – Java™, WebSphere, RPG, 5250, etc**
- **i5/OS processor and user licensing lowers cost for many customers**
- **P10 Software Tier**



- 1/2-way
- 1.9GHz POWER5+
- 3800/7100 CPW
- Max 32GB memory
- Max 39TB disk
- i5/OS V5R4

# System i 525 Express



Fully flexible packages, with configure to order options....

### ***30 User***

**1/2-way 1.9GHz**  
**Capacity on Demand**  
**30 i5/OS users**  
**1 year SWMA**

Starting at: **£23,894**

### ***150 User***

**1/2-way 1.9GHz**  
**Capacity on Demand**  
**150 i5/OS users**  
**1 year SWMA**

**£40,915**

### ***Unlimited User***

**1/2-way 1.9GHz**  
**Capacity on Demand**  
**Unlimited i5/OS users**  
**1 year SWMA**

**£53,681**

# The New IBM System i Capacity BackUp Edition

## *Breakthrough Savings for Business Resiliency Deployment*

- **Versatile:**
  - Choose the right business resiliency approach for your company
  - Supports a broad range of high availability and disaster recovery solution options
- **Flexible:**
  - Deploy your assets where and when your business needs them most
  - Transfer i5/OS and 5250 Enterprise Enablement between systems
- **Expandable:**
  - Buy what you need today and add as your business grows
  - Enable Capacity on Demand processors – permanently or temporarily
- **Comprehensive and cost effective:**
  - Protect all your applications on i5/OS, Linux and AIX 5L
  - Expanded i520/i550/i570/i595 CBU Editions, with or without 5250 OLTP applications
- **Suits many installations**
  - Existing CBU Editions i570 (2/16w), i595 (4/32w)
  - Additional CBU Editions i520, i550 (1/4w), i570 (1/4w, 1/8w), i595 (2/16w)
  - CBU Editions to support Standard Edition primary systems
  - CBU Editions may now support i810, i825, i870 and i890 production systems
  - Upgrades to CBU available from i810, i825, i870, and i890

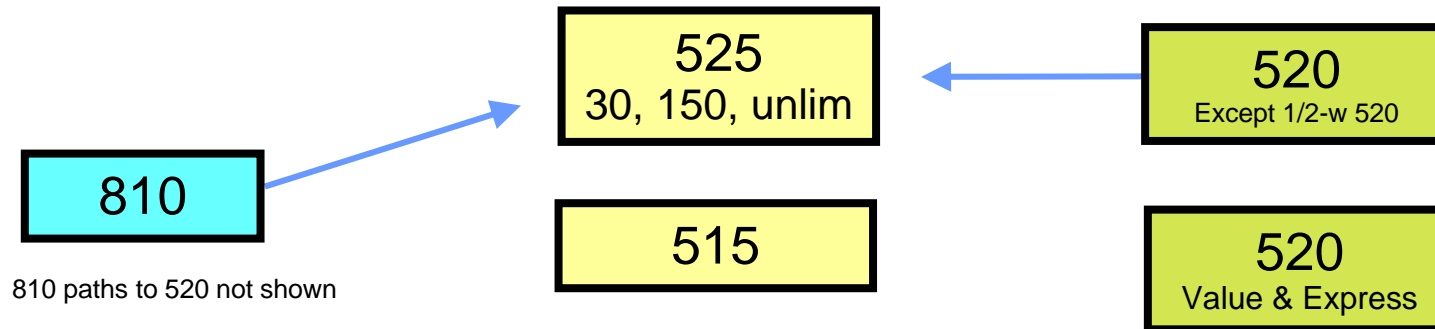
[www.ibm.com/systems/i/hardware/cbu](http://www.ibm.com/systems/i/hardware/cbu)

## System i 525 Express Capacity BackUp (CBU)

- Flexible, cost-effective Capacity BackUp offerings offer exception value for a second server deployed for disaster recovery or high availability
- CBU supports a broad range of business resilience solutions including logical replication from multiple ISVs and internal or SAN disk replication (XSM, Metro/Global Mirror)
- Base 525 Express CBU configuration includes one i5/OS processor entitlement & 30 i5/OS user entitlements
- Primary server can be either 520 or 525
- Starting at £20,294



## Model 525 Upgrade Paths




- **Same upgrade paths as 9406-520 1/2-way.**
  - No upgrade from a 1.9GHz 1/2-way 520 to 525 (no performance advantage)
- **No upgrades from the 525 to a larger 5xx model (550/570)**
- **No upgrades from one 525 edition feature to a different 525 edition. (no performance/function advantage)**
- **Upgrades into the #7790 (30 users), the #7791(150 user) or #7792 (max users) editions.**
- **Upgrades into the 525 CBU editions from 520 CBU editions are supported**
  - From 520 CBU editions (1200 CPW P10, 2800 CPW P10, & 3800/7100 CBU P20) are supported
  - From 520 non-CBU systems and from 8xx machines are NOT supported.



# Community Hospital: Financial and Clinical Applications

- 100 users

	Wintel	System i 520	System i 525
<b>Core Financials</b>	<ul style="list-style-type: none"> <li>Windows Server</li> <li>Intel Server x 4                             <ul style="list-style-type: none"> <li>3.0GHz Xeon</li> </ul> </li> </ul> <p><b>\$62,000</b></p>	<ul style="list-style-type: none"> <li>i5/OS</li> <li>1200 Enterprise Edition</li> </ul> <p><b>\$109,000</b></p>	 <ul style="list-style-type: none"> <li>i5/OS</li> <li>POWER5+ 1.9 GHz</li> </ul> <p><b>\$89,700</b></p>
<b>Clinical Solutions</b>	<ul style="list-style-type: none"> <li>Windows Server</li> <li>Intel Server x 2                             <ul style="list-style-type: none"> <li>3.0GHz Xeon</li> </ul> </li> </ul> <p><b>\$18,000</b></p>	<ul style="list-style-type: none"> <li>Standard Edition</li> </ul> <p><b>\$52,200</b></p>	<ul style="list-style-type: none"> <li>Activate 2<sup>nd</sup> processor</li> <li>Add 30 additional users</li> </ul> <p><b>\$15,600</b></p>
	<ul style="list-style-type: none"> <li>- Add a server for each application component</li> <li>- Server farms mean more complex operations</li> <li>- Growing virus &amp; security management challenges</li> </ul>		<ul style="list-style-type: none"> <li>+ Want to implement highly resilient operations and security to meet hospital service level targets?</li> <li>+ Want to add clinical applications without disruption with Capacity on Demand?</li> </ul>



## Affordable, Resilient Disk Storage

- ✓ 50% savings on disk prices
- ✓ Cache/disk packages at excellent prices

System i Disk Prices	Previous Price	April 2007 Price	Savings
70 GB 15K RPM disk	£1,500	£700.82	53%
141 GB 15K RPM disk	£2,251	£1,265	44%
<b>Easy-to-order 515 &amp; 525 Disk &amp; Cache Packages*</b>			
40 MB write cache plus 2 x 70 GB disks	£4,219	£1,914	55%
40 MB write cache plus 6 x 70 GB disks	£10,219	£3,488	66%

\* Package savings calculated compared to buying cache and disks separately.

Note that 35GB drives withdrawn 1<sup>st</sup> May 2007. New disk prices available for all 515/520/525/550/570/595

## System i 595 Enhanced with POWER5+ 2.3 GHz

- Available in Standard, Enterprise & Capacity BackUp Editions
- Up to 216,000 CPW on 64-way\*
- Substantial increase versus 32-way
  - 17% more capacity than 1.9 GHz
  - 27% more 32-way capacity than 1.65 GHz
  - Over 5X the 32-way capacity of 890
- Consistent with i595 1.9GHz
  - Same memory – DDR1 or DDR2
  - Same I/O
  - Same upgrades
- *Requires i5/OS V5R4*



\*Measured as two 32-way partitions

# System i 595

	595	595	595
<b>Processor</b>	8/64w 1.65 GHz POWER5 (withdrawn)	8/64w 1.9GHz POWER5	8/64-way 2.3 GHz POWER5+
<b>i5/OS Release</b>	V5R3 & V5R4	V5R3 & V5R4	V5R4
<b>CPW</b>			
<b>8/16-way</b>	25,500 – 45,500	26,700 - 50,500	31,500 - 58,800
<b>16/32-way</b>	46,000 – 85,000	51,000 - 92,000	61,000 - 108,000
<b>32/64-way</b>	86,000 – 165,000	92,000 - 184,000	108,000 - 216,000
<b>Editions</b>			
<b>Standard</b>	Y	Y	Y
<b>Enterprise</b>	Y	Y	Y
<b>HA</b>		Y	
<b>CBU</b>		Y	Y

## New High Performance Disk Controller

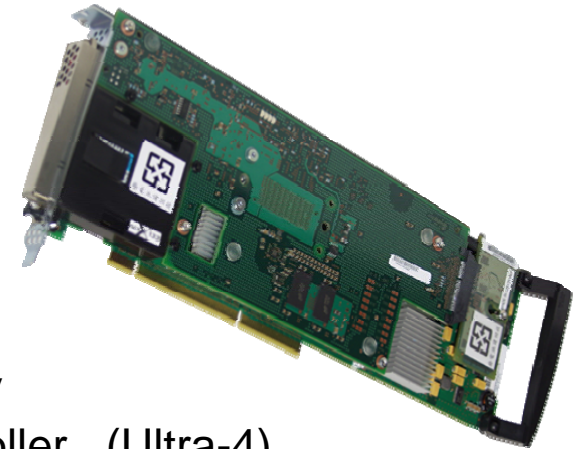
- **Higher performance due to**

- Huge cache

- 1.5GB write cache    2x #2780 757MB
- 1.6GB read cache    1.6x #2780 1GB

- Faster electronics in controller:

- Uses POWER-PC processor and DDR2 memory
- Up to 320MB transfer rate between disk & controller (Ultra-4)



- **Smart IOA**

- Does not require an IOP on 5xx systems (with i5/OS V5R4)

- **RAID-6**

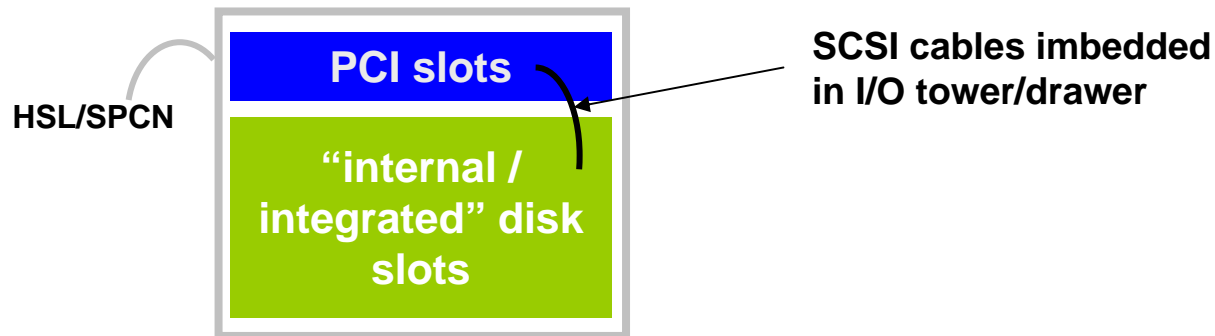
- Supported as well as RAID-5 and mirroring capability
- Up to 2 disk in an array can fail and still keep running

- **UK price**

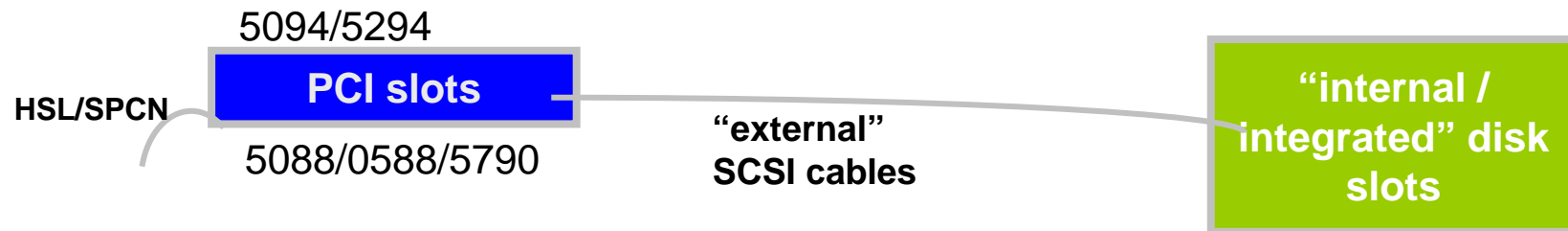
- **without Auxiliary Write Cache, £4,637 (-8%)**
- **with Auxiliary Write Cache, £5,103 (-8%)**

# New System i5 Disk Packaging Structure

Previously all “internal/integrated” disk = disk drives located in CEC or I/O tower/drawer

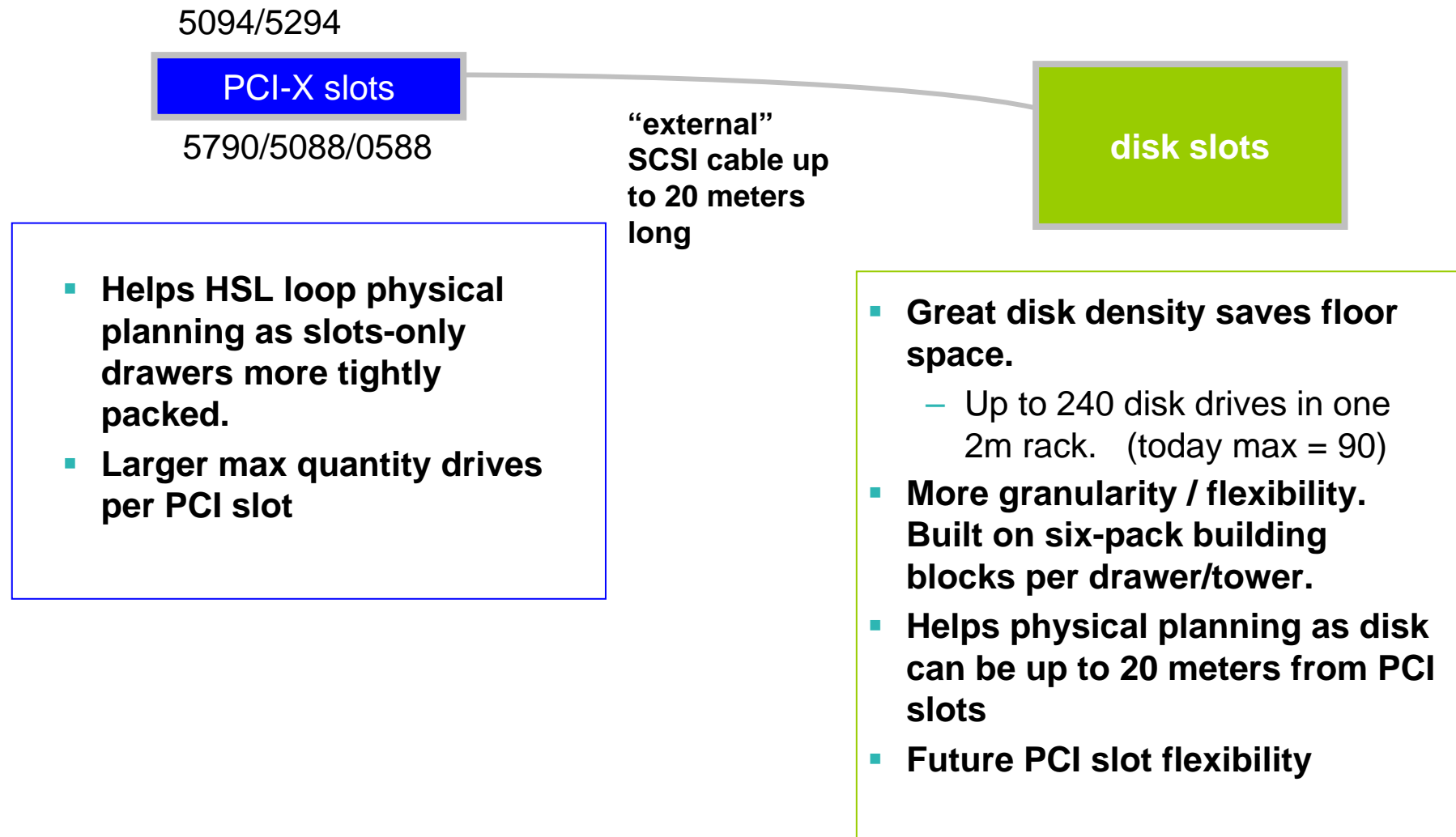


New capability to package internal disk slots separately





# New System i5 Disk Packaging Benefits

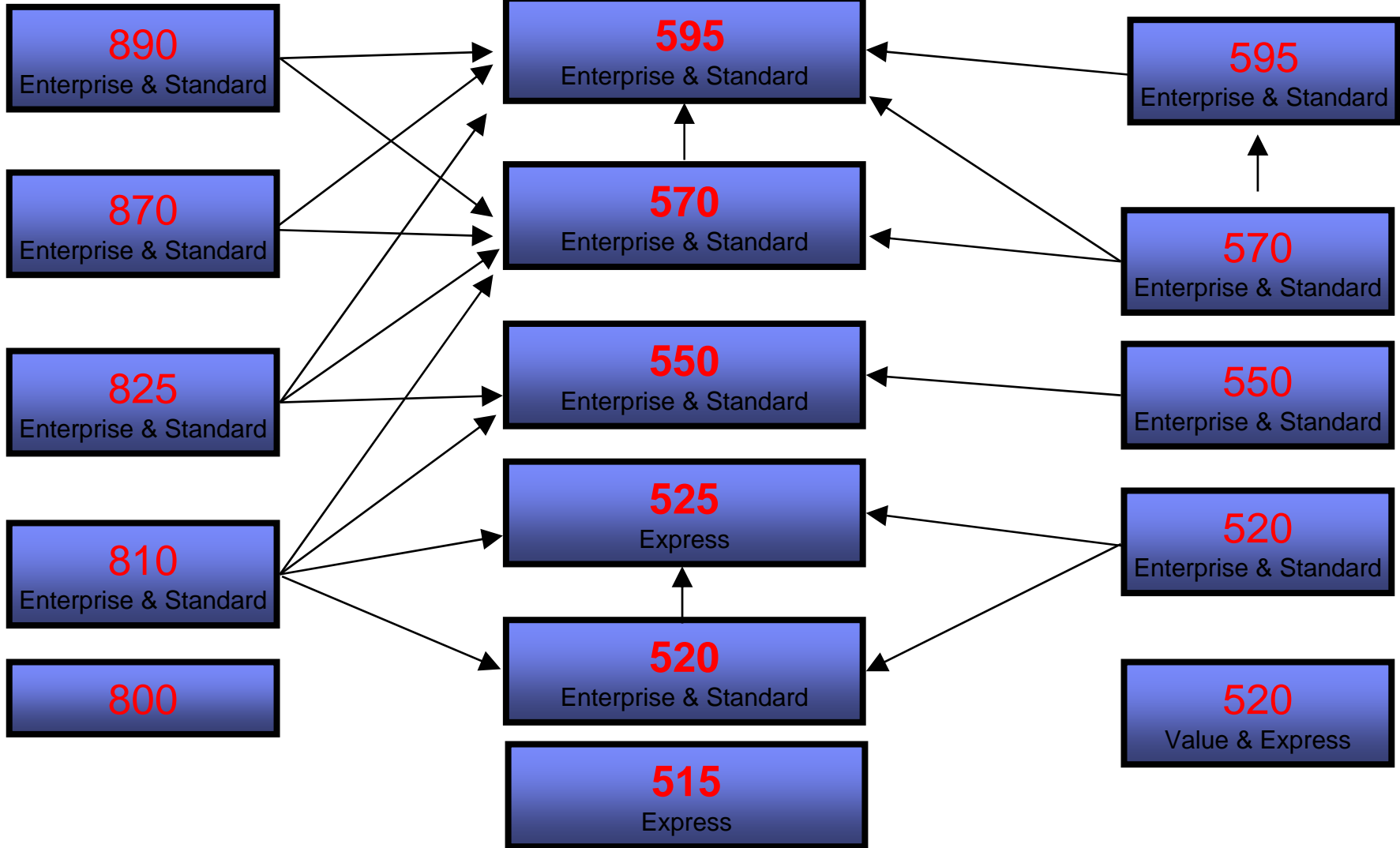


# Upgrades

## POWER4

## POWER5+

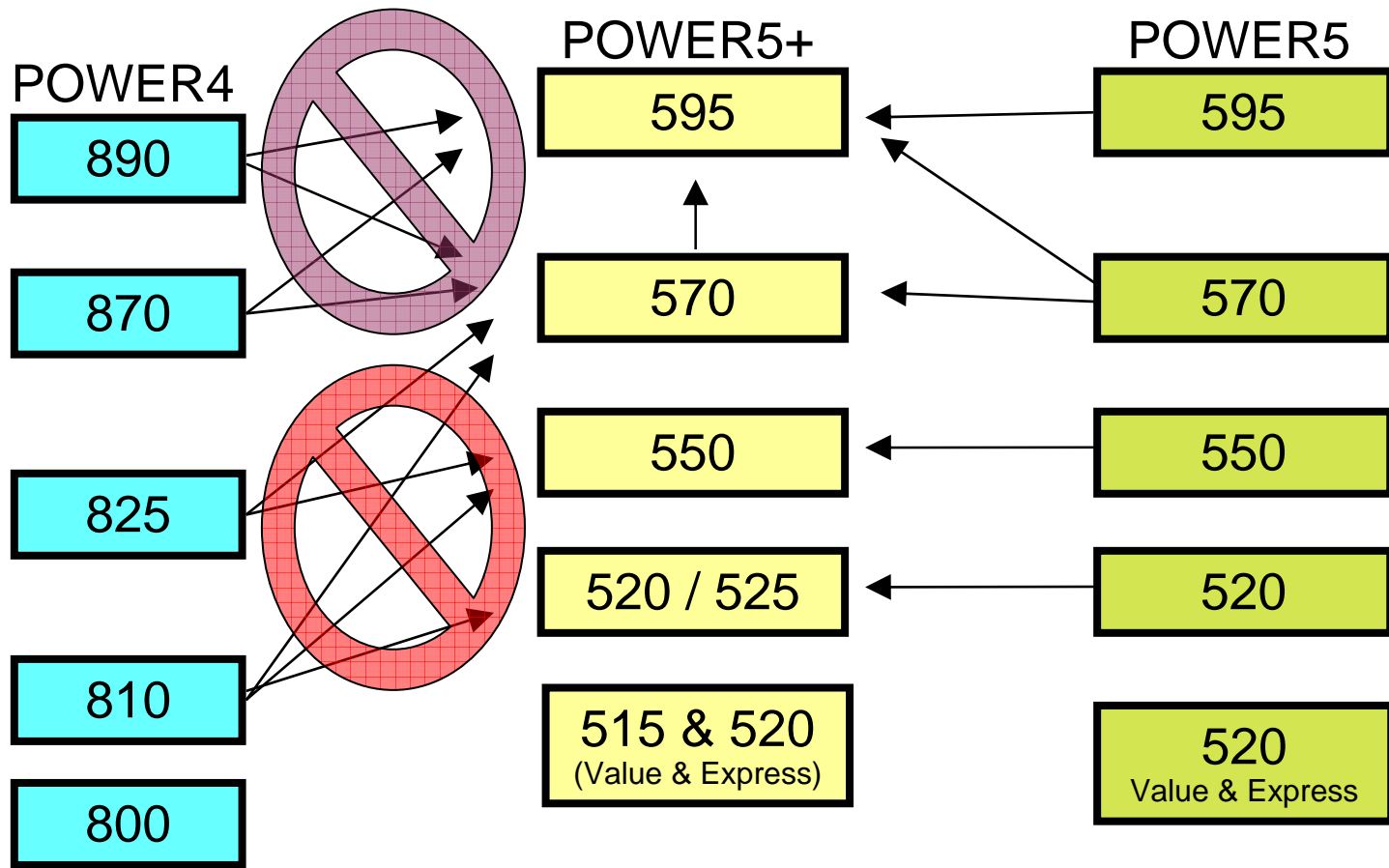
## POWER5



# 8xx Upgrades Withdrawal

810/825 upgrade paths available until 1<sup>st</sup> December 2007

870/890 upgrade paths available until 1<sup>st</sup> April 2008



# i5/OS Application Server

- New option designed for application serving and infrastructure workloads in partitions
- Offers a reduced i5/OS entitlement charge for additional processors on 550, 570, 595
- Designed for applications that don't require DB2 or which access DB2 in other LPARs
- Enables clients to exploit i5/OS reliability, security, scalability and work management features more affordably

Model	i5/OS	i5/OS Application Server
550	£32,583	<b>£9,774</b>
570	£43,699	<b>£13,109</b>
595	£43,699	<b>£13,109</b>

**WebSphere** software



**Lotus** software

**Apache**





<b>ERP OLTP DB2</b>	<b>WebSphere Application Server</b>
<b>i5/OS</b>	<b>i5/OS Application Server</b>
<b>LPAR1</b>	<b>LPAR2</b>
<b>570</b>	

# i5/OS Application Server Example: Domino



### Added System i Features

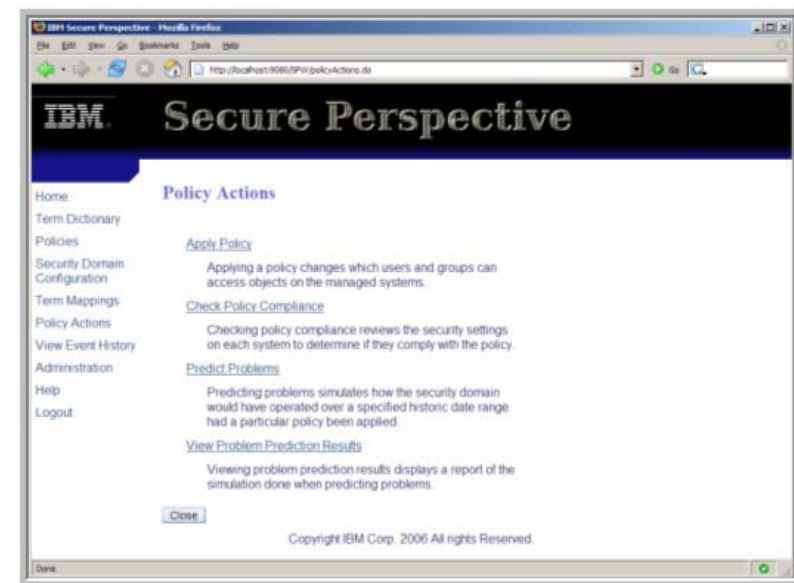
- Processor activations (2)
- 8 GB memory
- Ethernet controller
- 70 GB disk (17)
- RAID controller
- i5/OS entitlements (2)

System i 570	System i 570
<b>Adding Domino Partition &amp; 1TB Disk</b> <b>£66,949</b>	<b>Adding Domino Partition &amp; 1TB Disk</b>  <b>£53,363</b>
<b>i5/OS processor entitlements</b> <b>£87,398</b>	<b>i5/OS Application Server processor entitlements</b>  <b>£26,218</b>
<b>£154,347</b>	<b>£79,581</b>

**Bottom Line :** i5/OS Application Server delivers substantial savings for collaboration solutions

# IBM Secure Perspective for System i

- Introducing a revolutionary new tool to help businesses create enforceable security policies
- Enables administrator to create a policy using natural language terms
- Implements your system security settings and helps you demonstrates compliance to your policy
- £1,031 per managed processor



For more information see <http://www-03.ibm.com/systems/i/security>



# System i IP Telephony and Integrated Collaboration

## 3Com IP Telephony Integration for IBM Lotus® Sametime® 7.5

- *Click-to-Dial.* Use Sametime contact lists to make calls from your desktop phone by simply using the Call option within Sametime.
- *Click-to-Conference.* Add colleagues from your Sametime buddy list into an audio conference.
- *View Telephony Presence.* Through the Sametime client see whether colleagues are logged onto the System i IP telephony system and if they are on a call.
- *Directory Integration.* Use Domino as your LDAP directory source and automatically synchronize with your telephony directory.

## 3Com IP Telephony Integration for IBM Lotus Domino®

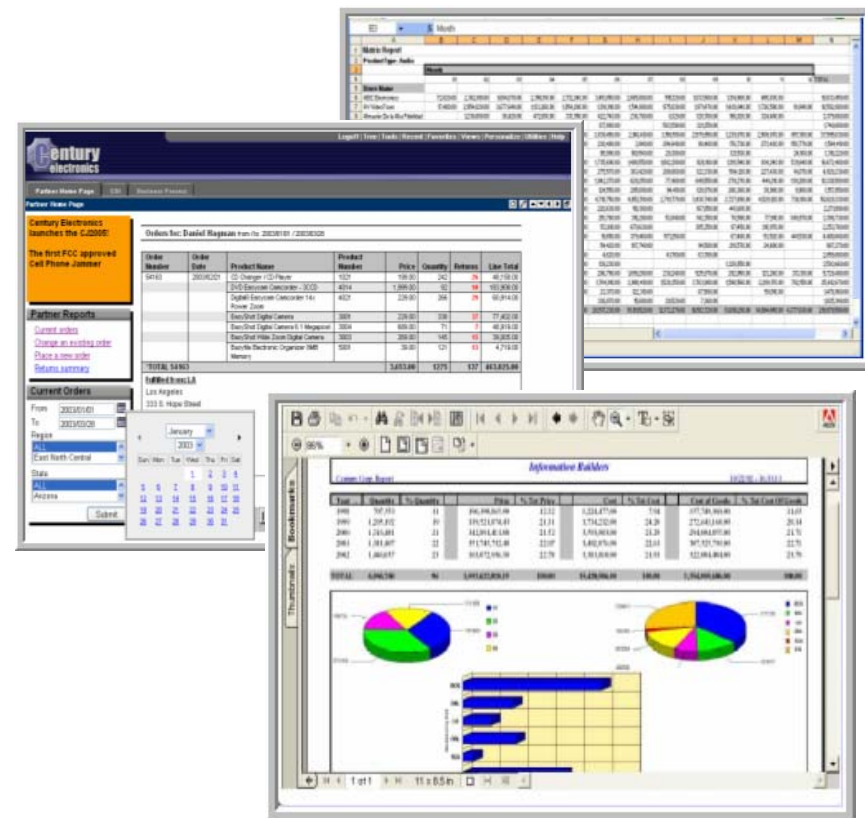
- Receive voicemails, faxes and email in a singled unified inbox.

## 3Com IP Telephony Integration SDK for System i

- New APIs to integrate telephony into business and collaboration applications
- Uses open Web Services architecture
- Compatible with XML, SOAP, Java 1.5, .Net and Perl
- Initiate/clear calls without detailed knowledge of phone infrastructure
- Applications can control phone features like transfer, conference and forwarding

## Product Preview: Web Based Query and Reporting

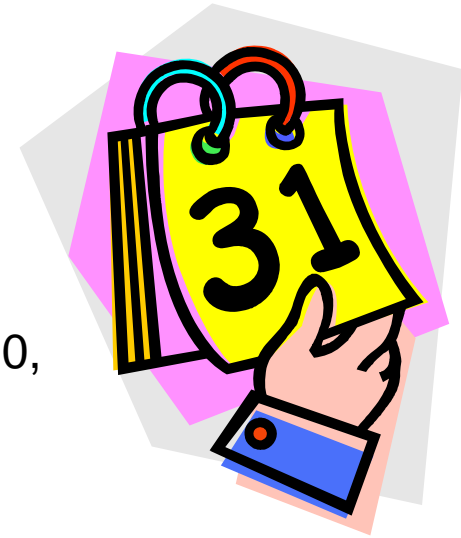
- IBM plans to deliver a Web-based query and report writing product that replaces IBM Query for System i
- **Web based, query and reports**
  - Report and graphing tools
  - Spreadsheet integration
  - Web-enable Query/400 reports
- **Advanced query capability**
  - Dashboards
  - DB2 Federated Queries
  - On Line Analytical Processing
- **Data Integration Options**
  - ERP System Integration
  - Database/Cube/Mining Connectors



For more details, refer to: <http://www.ibm.com/systems/i/db2>

## Support Planning for i5/OS

- i5/OS V5R3 was the final release for the Models 170, 720, 730, 740, and SB1
- i5/OS V5R4 is the final release that will be supported by Models 270, 820, 830, 840, SB2 and SB3.
- The next release after i5/OS V5R4 is planned to be supported on Models 800, 810, 825, 870, 890, 515, 520, 525, 550, 570, and 595.
- SW MA support for V5R2 is available until April 30<sup>th</sup> 2007
- End of support for V5R3 and V5R4 TBA
- V5R3 withdrawn from sale December 2007



## July 2007 planned Software Announcements

- **MySQL Enterprise Server**
- **Temporary software licences**
- **Java Standard Edition Development Kit 6**
- **DB2 Web Query**
- **V5R5 Product Preview**



For more information, see  
[www.ibm.com/systems/i/announce2007](http://www.ibm.com/systems/i/announce2007)



# Trademarks and Disclaimers

© IBM Corporation 1994-2007. All rights reserved.

References in this document to IBM products or services do not imply that IBM intends to make them available in every country.

Trademarks of International Business Machines Corporation in the United States, other countries, or both can be found on the World Wide Web at <http://www.ibm.com/legal/copytrade.shtml>.

Intel, Intel logo, Intel Inside, Intel Inside logo, Intel Centrino, Intel Centrino logo, Celeron, Intel Xeon, Intel SpeedStep, Itanium, and Pentium are trademarks or registered trademarks of Intel Corporation or its subsidiaries in the United States and other countries.

Linux is a registered trademark of Linus Torvalds in the United States, other countries, or both.

Microsoft, Windows, Windows NT, and the Windows logo are trademarks of Microsoft Corporation in the United States, other countries, or both.

IT Infrastructure Library is a registered trademark of the Central Computer and Telecommunications Agency which is now part of the Office of Government Commerce.

ITIL is a registered trademark, and a registered community trademark of the Office of Government Commerce, and is registered in the U.S. Patent and Trademark Office.

UNIX is a registered trademark of The Open Group in the United States and other countries.

Java and all Java-based trademarks are trademarks of Sun Microsystems, Inc. in the United States, other countries, or both.

Other company, product, or service names may be trademarks or service marks of others.

Information is provided "AS IS" without warranty of any kind.

The customer examples described are presented as illustrations of how those customers have used IBM products and the results they may have achieved. Actual environmental costs and performance characteristics may vary by customer.

Information concerning non-IBM products was obtained from a supplier of these products, published announcement material, or other publicly available sources and does not constitute an endorsement of such products by IBM. Sources for non-IBM list prices and performance numbers are taken from publicly available information, including vendor announcements and vendor worldwide homepages. IBM has not tested these products and cannot confirm the accuracy of performance, capability, or any other claims related to non-IBM products. Questions on the capability of non-IBM products should be addressed to the supplier of those products.

All statements regarding IBM future direction and intent are subject to change or withdrawal without notice, and represent goals and objectives only.

Some information addresses anticipated future capabilities. Such information is not intended as a definitive statement of a commitment to specific levels of performance, function or delivery schedules with respect to any future products. Such commitments are only made in IBM product announcements. The information is presented here to communicate IBM's current investment and development activities as a good faith effort to help with our customers' future planning.

Performance is based on measurements and projections using standard IBM benchmarks in a controlled environment. The actual throughput or performance that any user will experience will vary depending upon considerations such as the amount of multiprogramming in the user's job stream, the I/O configuration, the storage configuration, and the workload processed. Therefore, no assurance can be given that an individual user will achieve throughput or performance improvements equivalent to the ratios stated here.

Prices are suggested U.S. list prices and are subject to change without notice. Starting price may not include a hard drive, operating system or other features. Contact your IBM representative or Business Partner for the most current pricing in your geography.

Photographs shown may be engineering prototypes. Changes may be incorporated in production models.