

IBM® DB2® Web Query for IBM i™
Report Broker (5733-QU3)
Install Instructions
(9/19/2008)

Pre-requisites

Review all instructions before starting installation of the DB2 Web Query Report Broker licensed products. If you have not already installed the prerequisite DB2 Web Query V1R1M1 licensed product (5733-QU2), follow the links on the DB2 Web Query getting started web site:

<http://www.ibm.com/systems/i/software/db2/webquery/gettingstarted.html>

Please follow the instructions to install and configure V1R1M1. The V1R1M0 release of DB2 Web Query will not support Report Broker.

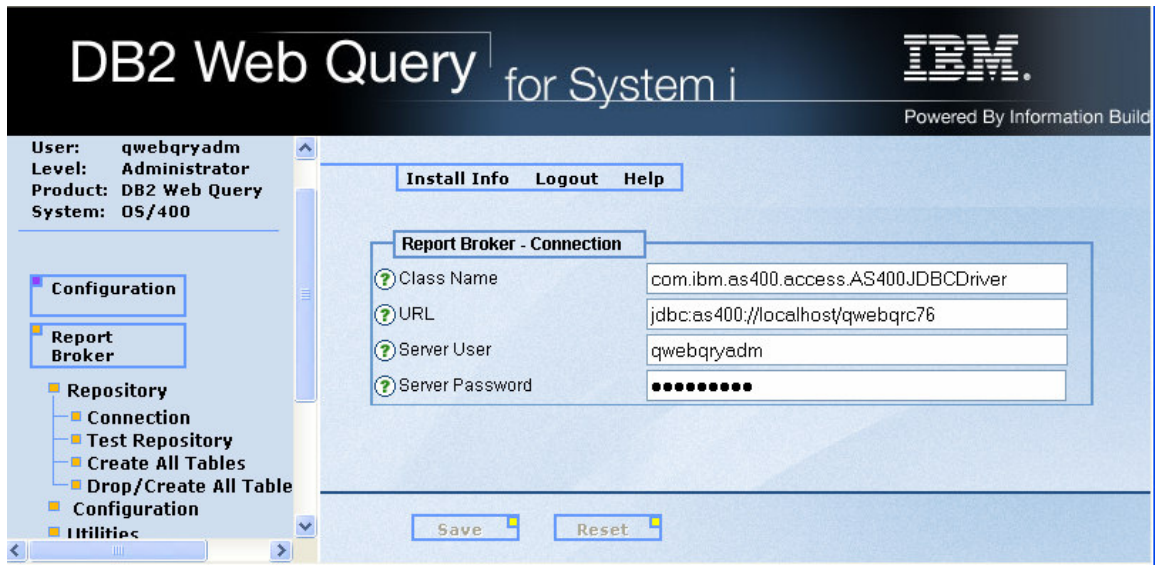
In addition, the following pre-requisite PTFs are required for DB2 Web Query license product (5733-QU2) in order for Report Broker to work. Please make sure that Web Query is STOPPED prior to loading these PTFs by using ENDWEBQRY.

SI32894
SI32901
SI32902
SI32903
SI32927

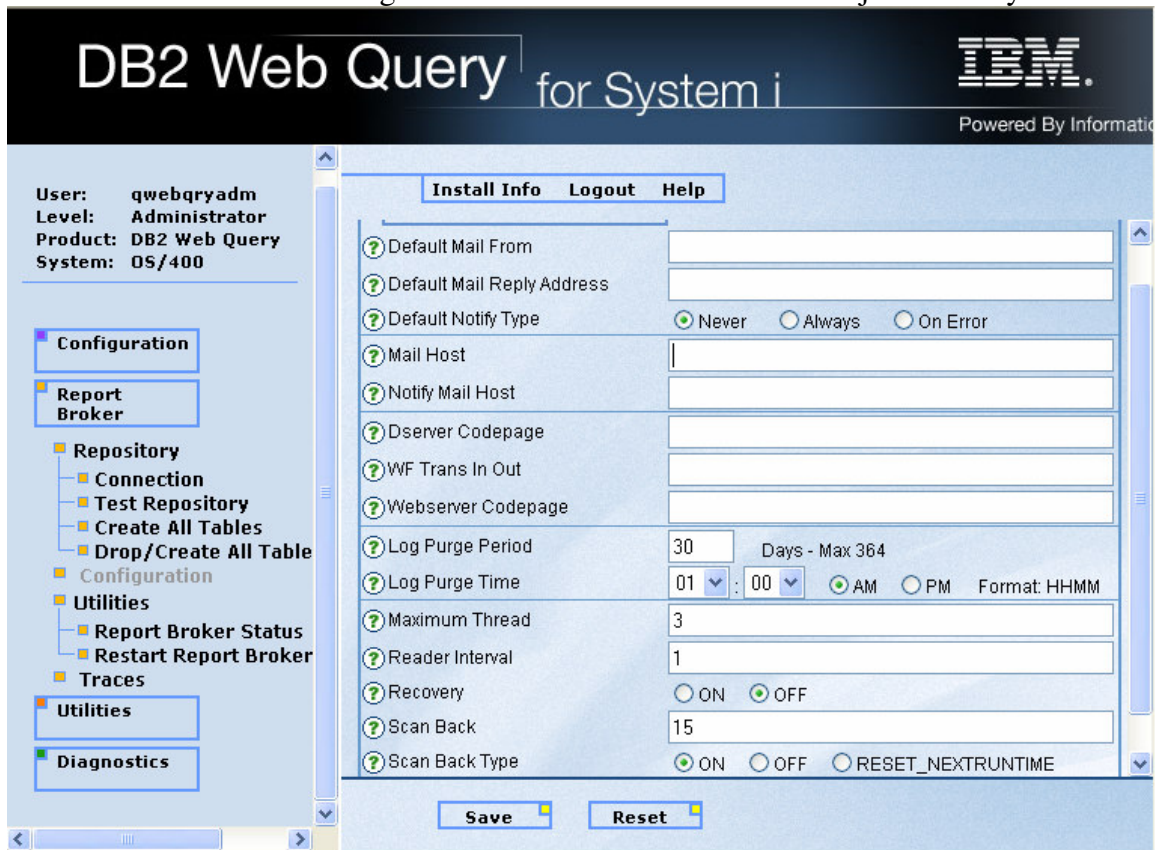
To install, sign on as QSECOFR or a user with *SECADM or *ALLOBJ authority.

Report Broker Installation and Setup Instruction:

- 1) RSTLICPGM LICPGM(5733QU3) DEV(OPT01) // Replace OPT01 with you optical device
- 2) Read and press F14 to accept the licensed agreement
- 3) If you have the license key for this product, issue the ADDLICKEY.
- 4) STRWEBQRY
This starts all the Web Query Servers, including the newly installed distribution server.
- 5) Log on to the Web Query console to configure Report Broker. Use profile QWEBQRYADM and password to see the Report Broker configuration.
(http://<sysname>.11331/webquery_html/wfconsole.htm)
- 6) Set the Report Broker repository connection password as illustrated on the following screen by clicking on the connection link.



- 7) Test the repository for a good connection.
- 8) Create the repository tables by clicking the Create All Tables.
- 9) Take the Configuration link to assign the remainder of Report Broker settings including the mail host server, default reply email address, log purge requirements and more. These settings are documented in the [Preparing For Report Broker Use](#) in the [Using Report Broker](#) chapter of the DB2 Web Query publication in IBM's Info Center. These settings can be set now or defaulted and adjusted at any time.



- 10) Logout of the Web Query console
- 11) To make sure the new configuration information is well established, stop and restart the DB2 WebQuery Servers using ENDWEBQRY and STRWEBQRY, waiting a minute for the servers to end before starting back up.
- 12) Logon as a named, registered user of DB2 Web Query with either MRADMIN or MRSCHEDULE as an established group profile for that logon.
<http://<sysname>:11331/webquery/i5-login>
- 13) You should now see the Report Broker tab and the schedule option by a right click on your already established reports or graphs.

The Report Broker distribution server start and end request has been integrated into the DB2 Web Query start and end CL commands. The distribution server can be started or ended individually using the STRWEBQRY and ENDWEBQRY option *DSTSRV. Starting and ending Web Query services with default option *ALL includes the Report Broker distribution server.

Other Report Broker considerations:

- 1) Report Broker documentation is available via context sensitive help when logged in to DB2 Web Query and as new addendum chapters to the DB2 Web Query documentation in IBM's Info Center at the following location (available 9/25/2008):
<http://publib.boulder.ibm.com/infocenter/systems/scope/i5os/index.jsp?topic=/rzasf/rzasfkickoff.htm>
- 2) If you cannot see Report Broker tab or the schedule option by a right-click on your report or graph that you want to schedule then you need to add either MRADMIN or MRSCHEDULE group to your Web Query named user logon. It may take a recycle of the servers to establish the new authorization.
- 3) MRADMIN is required to establish schedule blackout dates, perform change management requests or do global updates in Report Broker.
- 4) A CL command, RUNBRSCHEM, allows you to immediately issue a scheduled report request outside the context of a Web Query logon.
- 5) The logon used by the distribution server to query Report Broker scheduled requests is QWEBQRYADM. Remember to update the above mentioned Report Broker repository connection setting whenever you change the password. Should you forget, the QWEBQRYADM profile will likely become 'disabled' from the distribution server's connection requests and Web Query logons and schedule reports will start to fail.

Note to DB2 Web Query Administrators:

In previous DB2 Web Query instructions the issuer of the STRWEBQRY and ENDWEBQRY CL commands was directed to log on as QWEBQRYADM so the requester was assured the appropriate authority to start and end the servers. With the above listed DB2 Web Query pre-requisite PTFs, these two CL commands are now installed with PUBLIC *EXCLUDE to afford you better control over the start or end of Web Query servers. In addition, these commands now adopt the necessary authority for Web Query services without requiring a logon as QWEBQRYADM. As the QWEBQRYADM profile and password is now used by Report Broker in its connection properties to DB2 in order to query schedule requests, the less exposure of that profile and its password to explicit logons the better.

The online help text provided for Report Broker is currently English only. If you request help while on a Report Broker screen and it is for non-English, you will get a file not found URL. The translated version of the help text for Broker will be provided in the currently provided help languages of Spanish, French, Japanese, and German when we provide the additional language PTF in early October.

If you have trouble establishing a connection to your email host server using Report Broker distribution server, check your TCP domain configuration, using the CHGTCPDMN CL command. You may need to provide missing host or domain name information.

Note to Report Broker Beta users:

A number of new language translations were provided as part of the Beta program to get feedback from the various geographies interested in DB2 Web Query and Report Broker. This translation work is nearing completion but was not finished in time for the scheduled availability of the Report Broker. Those new language translations are not included in the pre-requisite PTFs listed above. Please look for a follow on PTF in early October '08 to include these new languages.

Report Broker beta users should manually shut down the distribution server (if active) before installing the pre-requisite PTFs and the Report Broker licensed program. See your beta install instructions for how to end the distribution server.