

IP8332 Re-focus the lens

Maintenance Handbook

Table

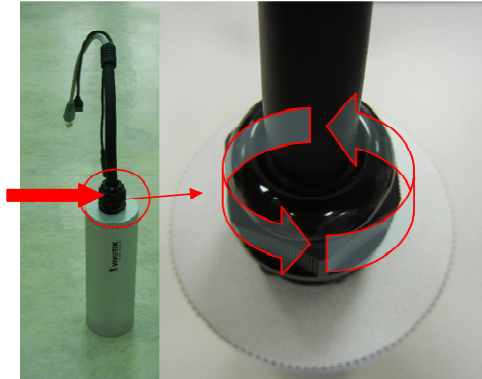
1 、 Procedure.....	2
1.1 Requirements	2
1.2 Procedure.....	2

1、Procedure

1.1 Requirements

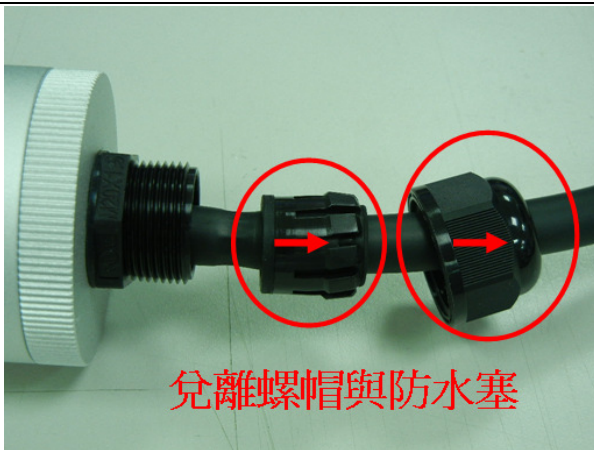
- <a> Screwdriver
- Spanner

1.2 Procedure



Step1

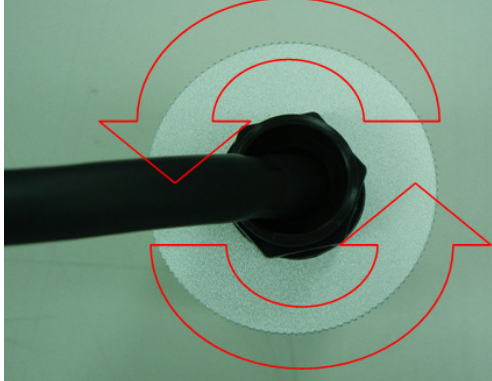
Use a spanner to loosen the waterproof connector. .



Step 2

Push the nut and waterproof cork away from the connector.

逆時針旋開後蓋



Step 3

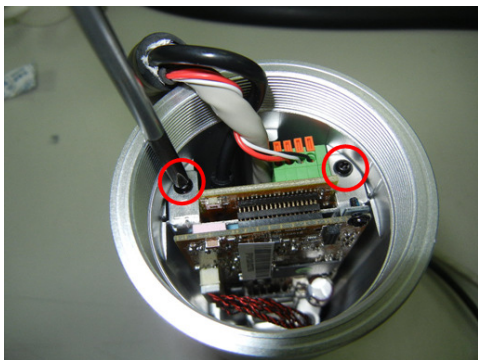
Rotate the rear cover of IP8332 anti-clockwise.



取下乾燥包後再拆卸螺絲

Step 4

Take out the silica gel.



Step 5

Use a screwdriver to loosen the screws.



Step 6

Carefully pull the PCBA boards out of the case.



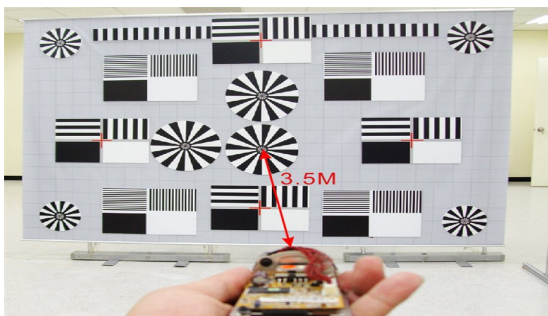
Step 7

Use a screwdriver to loosen the screws on the LED board..



Step 8

Take the LED boards off and then adjust the lens.

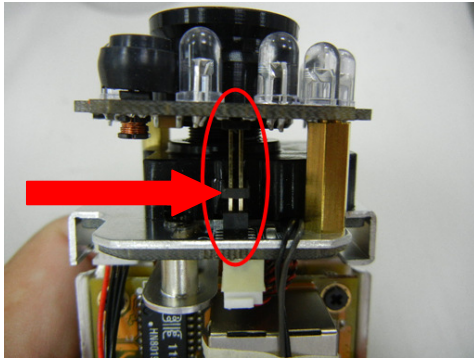


Step 9

Power on IP8332 and connect it to the network. Access it by IE and check the lens is focused.

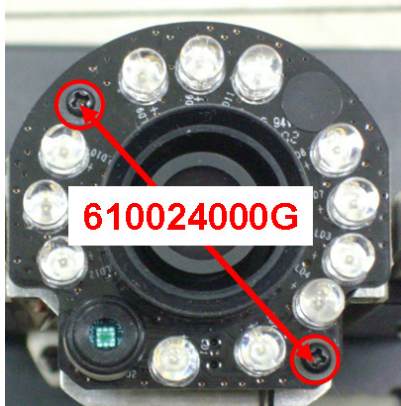
PS. You can connect IP8332 directly to your laptop/PC by an Ethernet cable.

Please aim an object at 3.5 meters far from the IP8332 to do the focus.



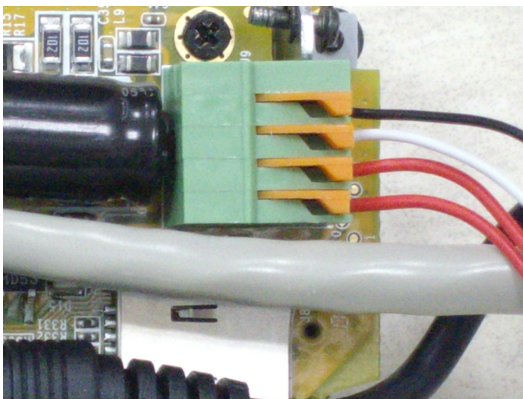
Step 10

Put the LED board back. Be sure that the connector of LED board is well connected to the sensor board.



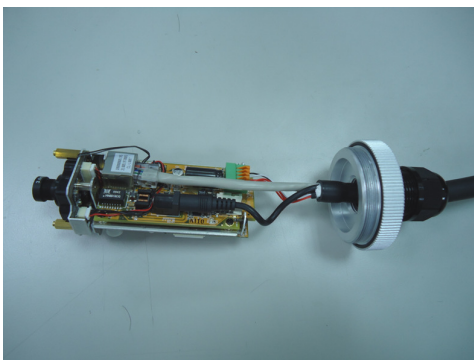
Step 11

Tighten the screws on LED board.



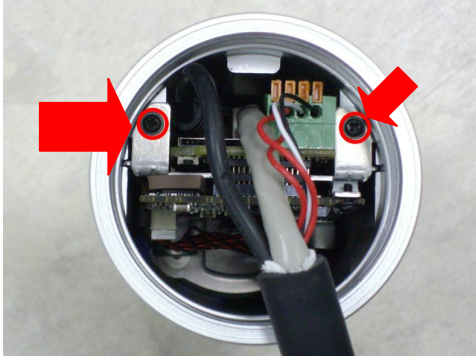
Step 12

Make sure the wires are well connected to I/O ports.



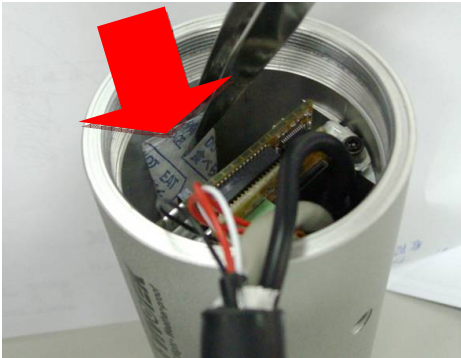
Step 13

Make sure the Ethernet cable and power cable are well connected to the right places.



Step 14

Tighten the screws.



Step 15

(To avoid fog)

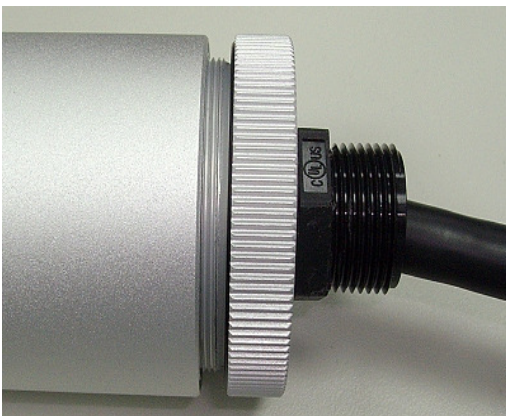
Put the silica gel back to the casing.



Step 16

(To make sure IP66)

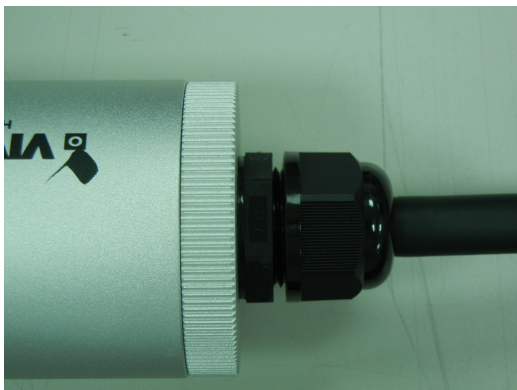
Make sure the rubber ring is well put on the rear cover.



Step 17

(To make sure IP66)

Screw the rear cover to the casing tightly.



Step 16

(To make sure IP66)

Put the waterproof cork back to its original position and screw the nut to the connector.