

On the IBM NAS boxes, Services for Netware only supports Netware Server Emulation up to 3.12. This is also known as Bindary mode. This is a Microsoft limitation as they designed the interface to support native IPX or Server emulation up to 3.12 only. If the network environment is set up for Novell ver 4.X or higher, Microsoft recommends that the client access the box, using CIFS or IP. Novell ver 4.X or "NDS Mode", is configured via IP connectivity.

**Possible alternatives:** In the event the NAS box will be in a "mixed" IPX/Netware environment (which includes vers 3.12, 4.X and higher) you may be able to set the client software (4.83 Netware Client for Windows ) to dual access mode. This may allow clients to access both, the NDS Netware servers as well as the NAS appliance. Note: The reader is advised that this alternative was not tested in a mixed environment.

The following explains how to install the service on the NAS Appliance...

To install Netware on a NAS Windows 2000 Server (Non Clustered) Release 2

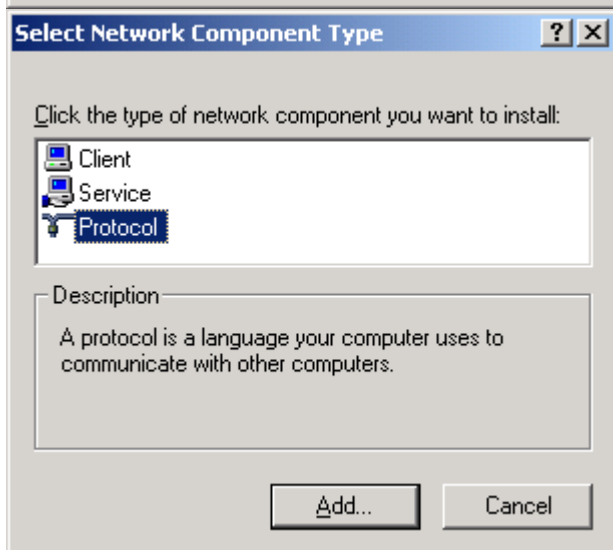
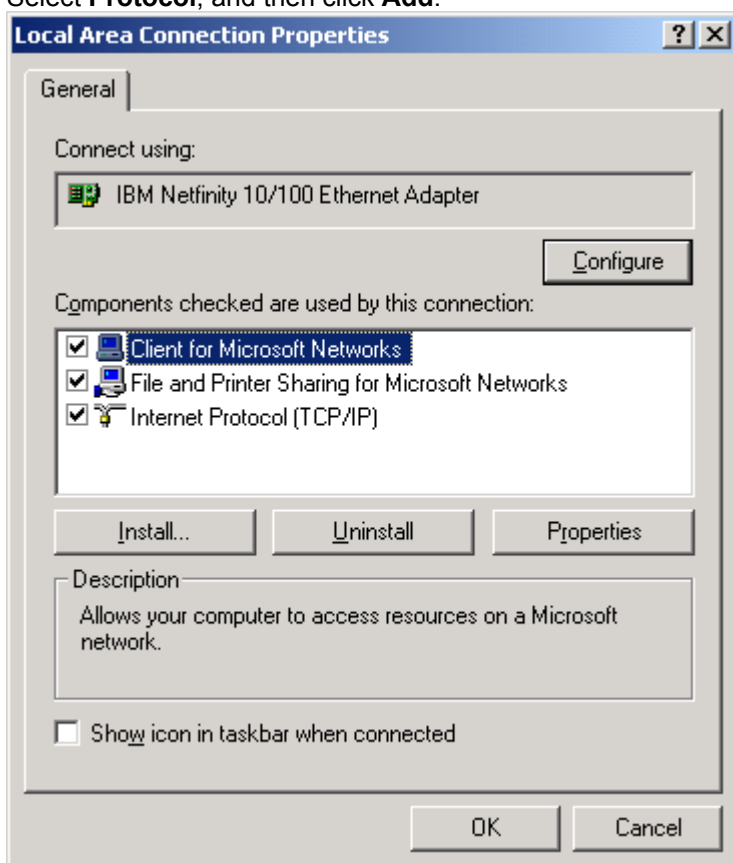
**Step 1: Install the Protocol on the Adapter**

On the desktop, right-click **My Network Places**, and then click **Properties**.

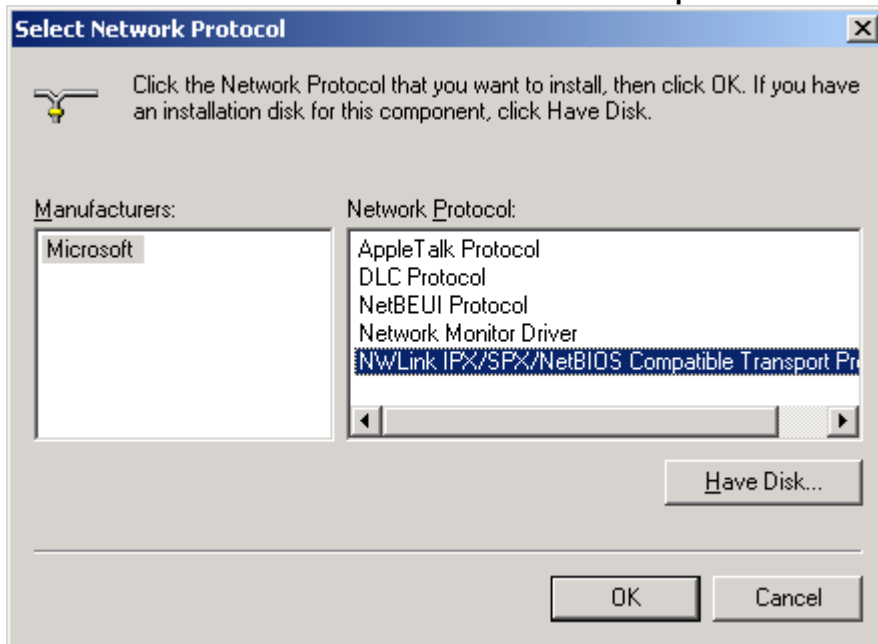
Right-click **Local Area Connection**, and then click **Properties**.

Click **Install**.

Select **Protocol**, and then click **Add**.



Select the **NWLink IPX/SPX/NetBIOS Compatible Transport Protocol**



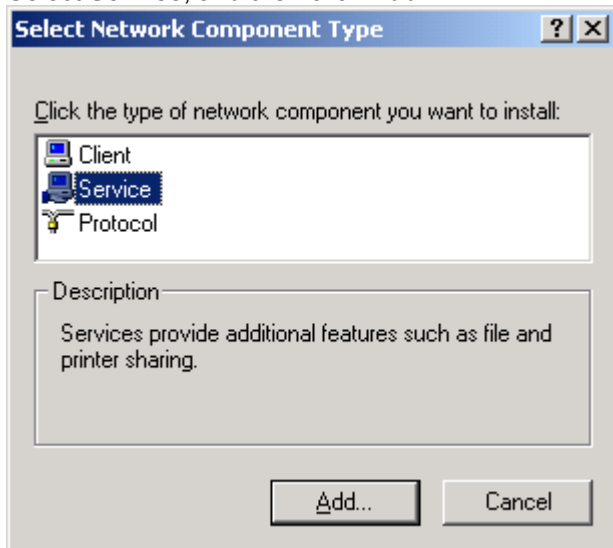
**Step 2:** *Install the Netware Services on the NAS Box*

On the desktop, right-click **My Network Places**, and then click **Properties**.

Right-click **Local Area Connection**, and then click **Properties**.

Click **Install**.

Select **Service**, and then click **Add**.



Click **Have Disk**.

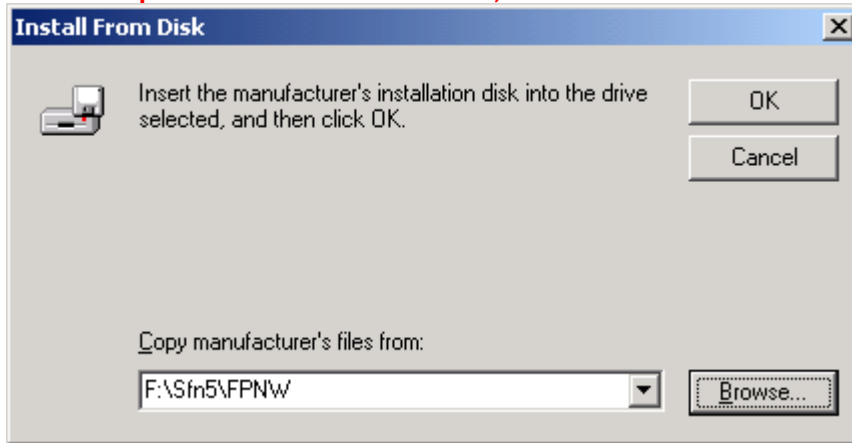
**Important**

- If File and Print Services for NetWare appears in the **Select Network Service** window list, **do not** select it; instead, click **Have Disk**.

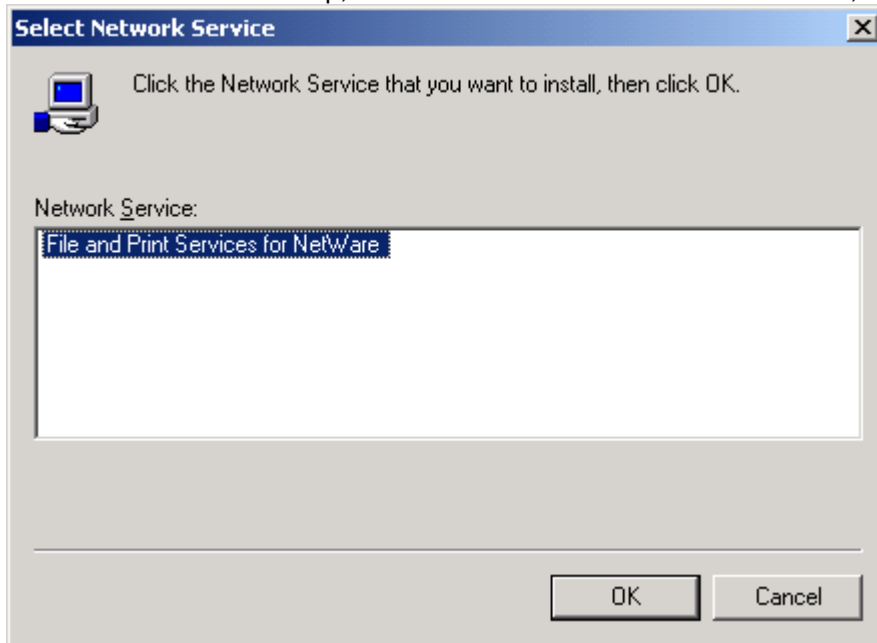
Insert the Microsoft Services for NetWare (version 5) compact disc in the computer CD-ROM drive. **(Note: In this case we will use the NAS Supplemental CD 2 of 2)**

The path is *drive*:\snF5\FPNW, where *drive* is the drive letter of the CD-ROM drive.

**follow the path shown here and hit OK;**



When the window comes up, select File and Print Services for NetWare, and click **OK**.

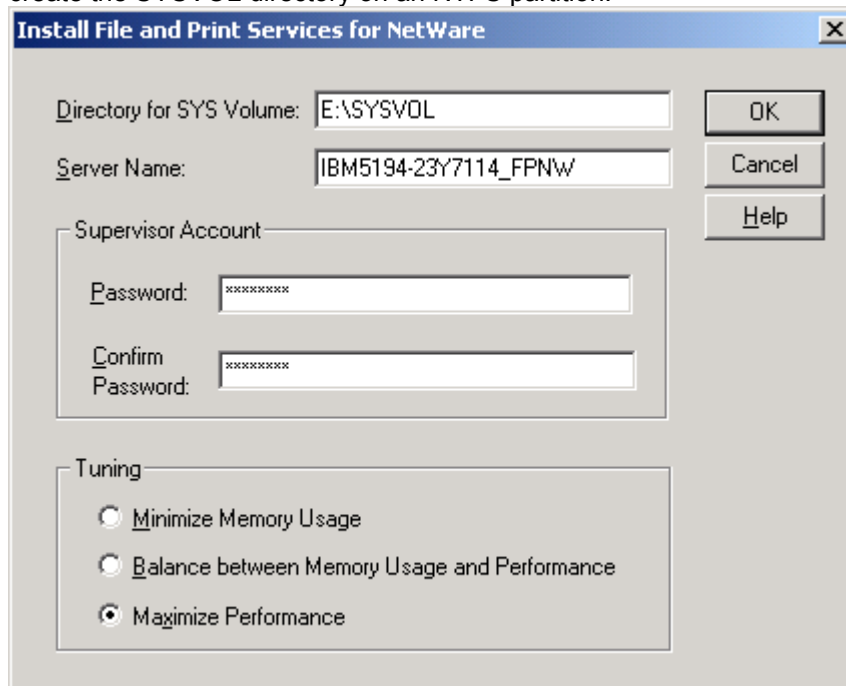


**Step 2a: Where to install the SYSVOL file and the Format**

**Important when the window below comes up...**

Because of the default security restrictions on the `systemroot` folder, it is strongly recommended that you create the SYSVOL directory in another location. In this example we will use E: **not** C: You should do this in order to avoid restricting user access to File and Print Services for NetWare files and directories.

**Note:** To optimize the use of Windows 2000 security features, it is also recommended that you create the SYSVOL directory on an NTFS partition.



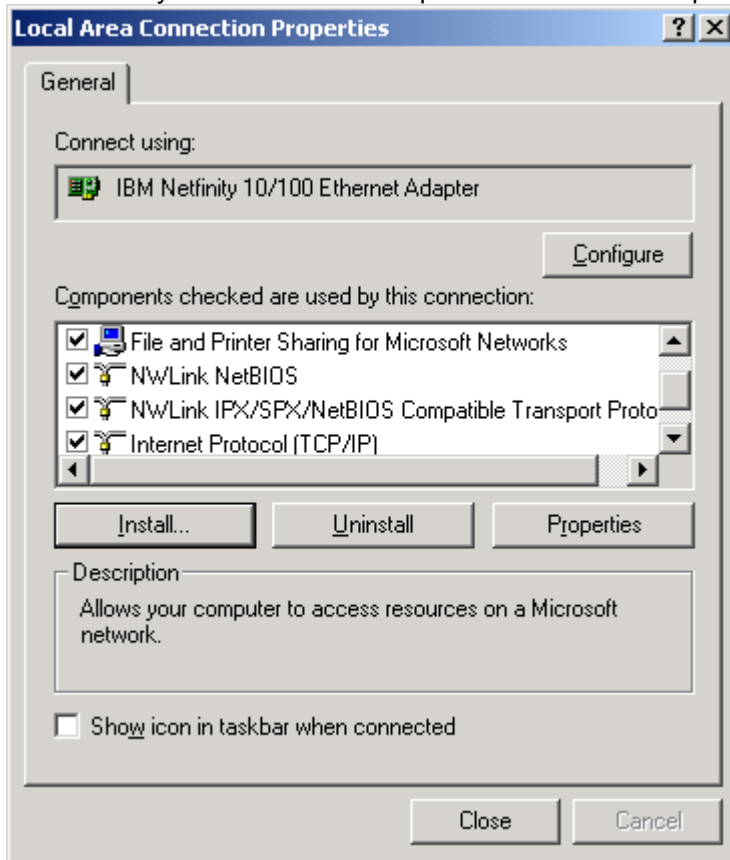
Complete the **Install File and Print Services for NetWare** dialog box. For more information about the dialog box, click **Help**.

If you are installing File and Print Services for NetWare in a domain, you are prompted to type a password for the FPNW Service Account.

If you install File and Print Services for NetWare on multiple domain controllers in a domain, you must specify the same password for each account on domain controllers where you install it.

Restart the computer to complete the installation.

Check the My Network Places>Properties and ensure the protocol was installed

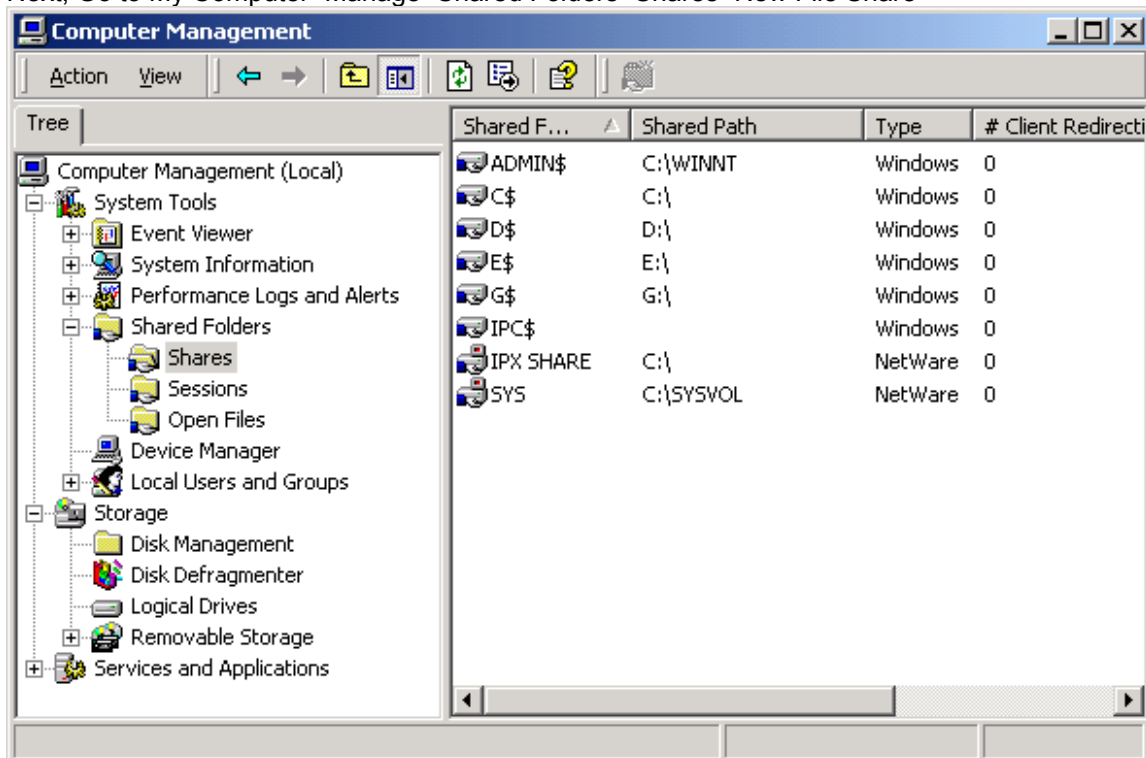


**Step 3: Creating a Share.**

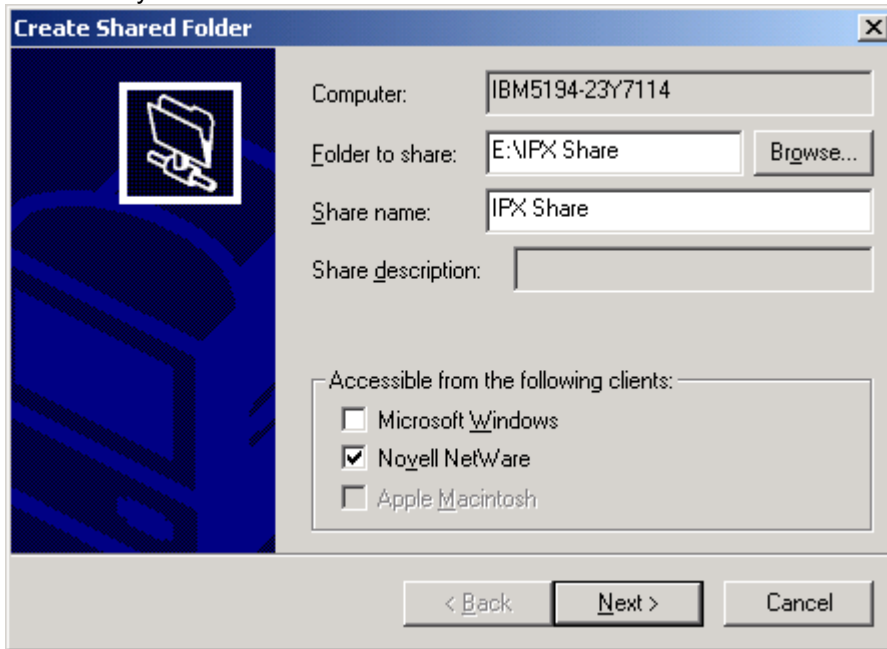
First create a new folder under the Share Drive In this example we will use IPX Share

**Step 3a:**

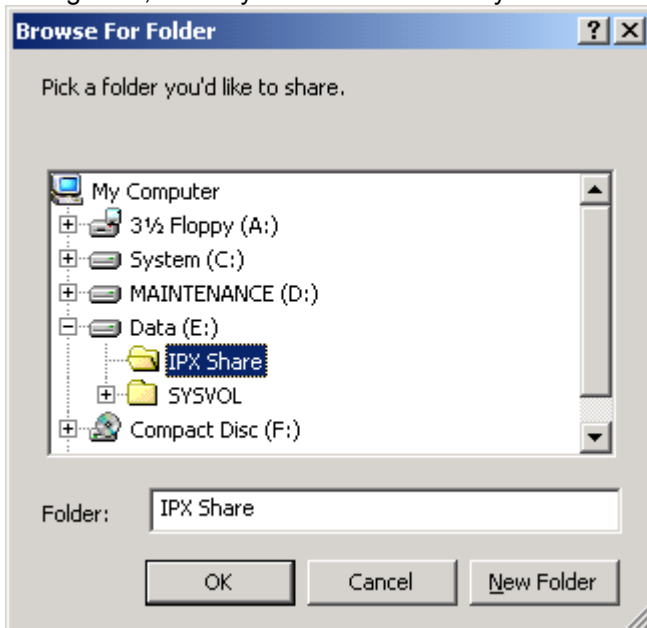
Next, Go to My Computer>Manage>Shared Folders>Shares>New File Share



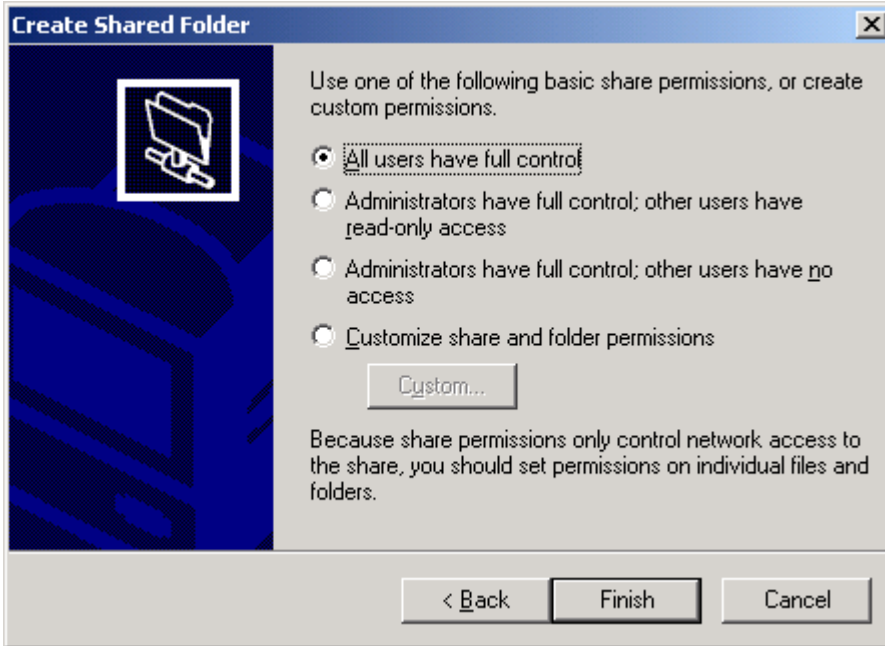
From here you can create the new IPX share.



Hitting Next, allows you to browse where you have created shares on the Drive.

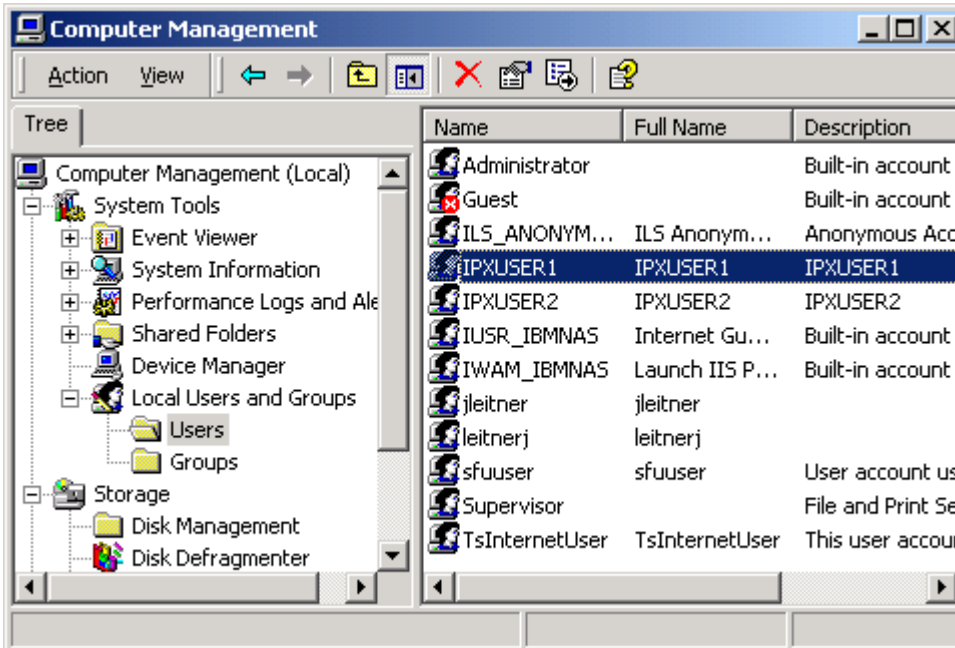


Setting up permissions on the Share. In this example we select the default of; All users have full control.

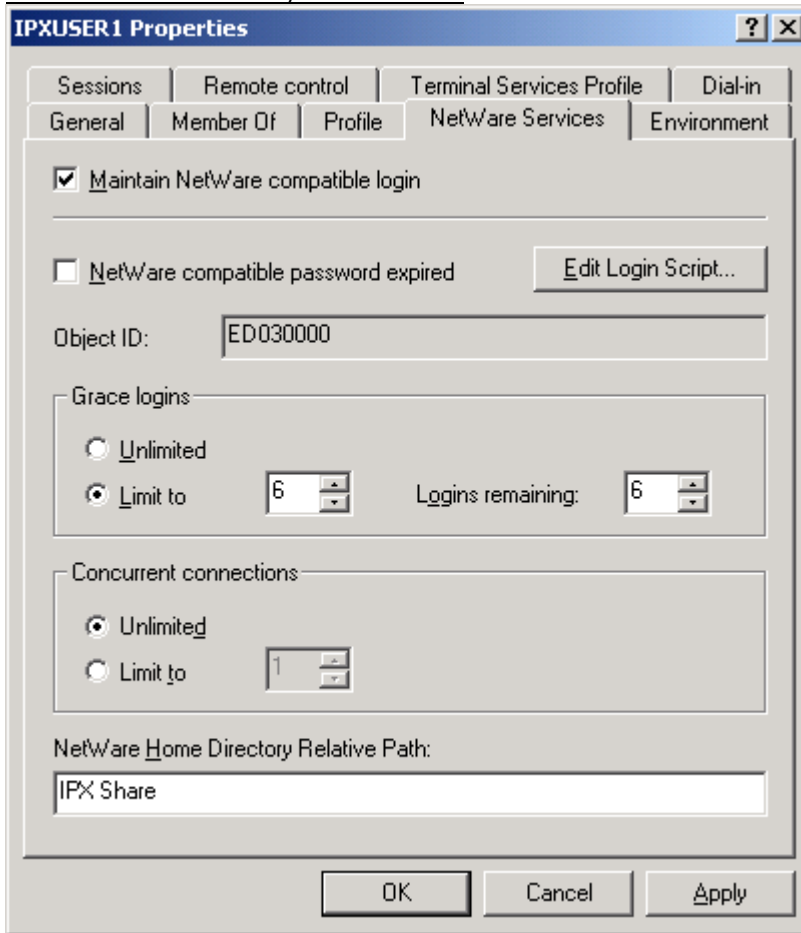


**Step 4: Create a User account**

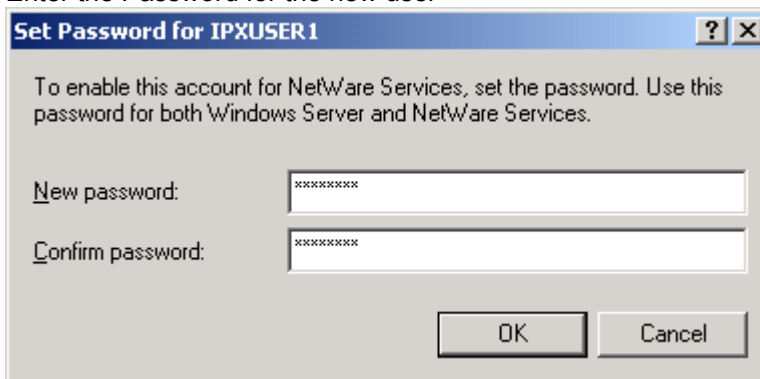
Under Computer Management>Local Users and Groups>Users>New User Create the New User.



When you get to properties, ensure you select to Maintain Netware compatible login  
This will allow a Windows Client to log into the share volumes. Also note: to enter the Netware Home Directory Relative Path: name

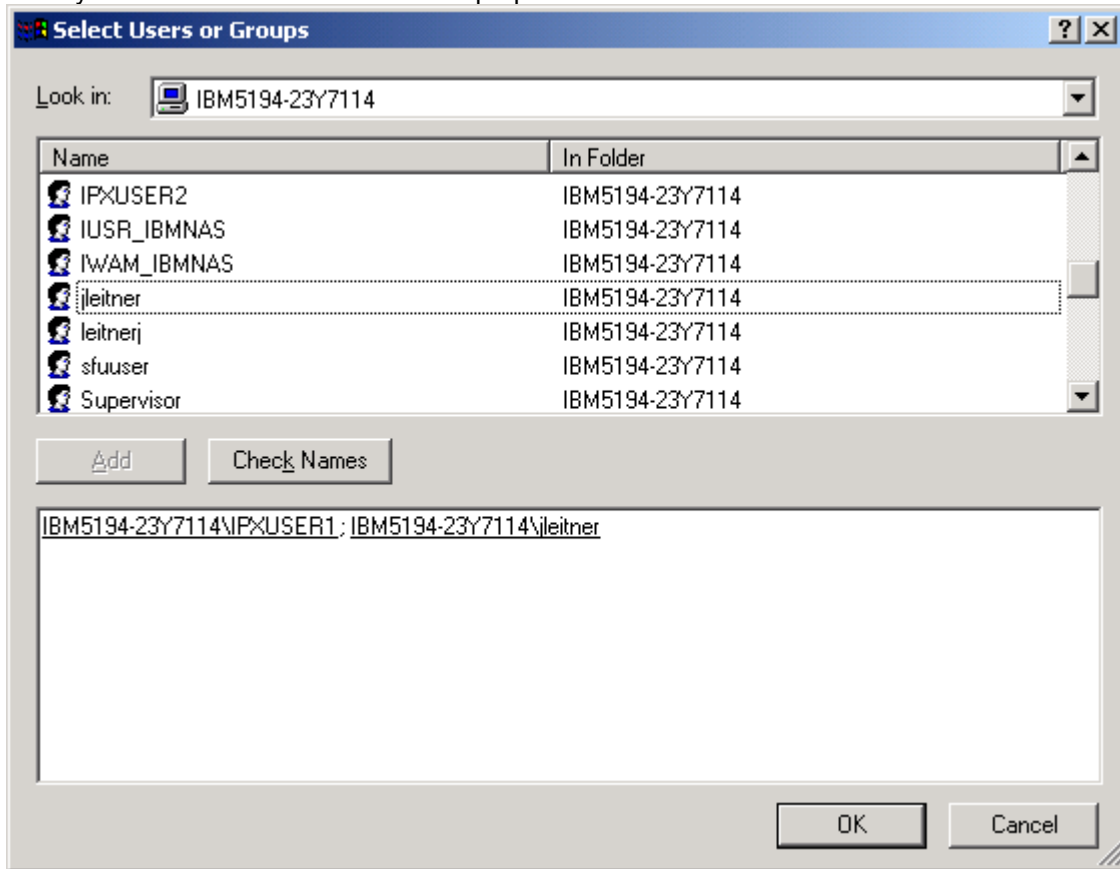


Enter the Password for the new user

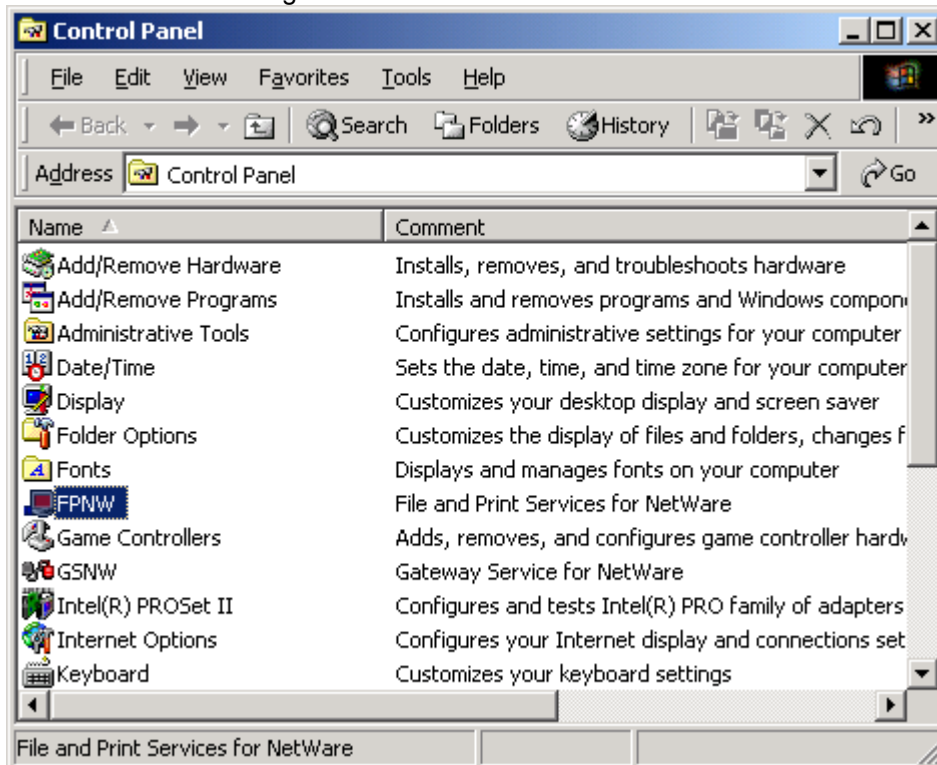




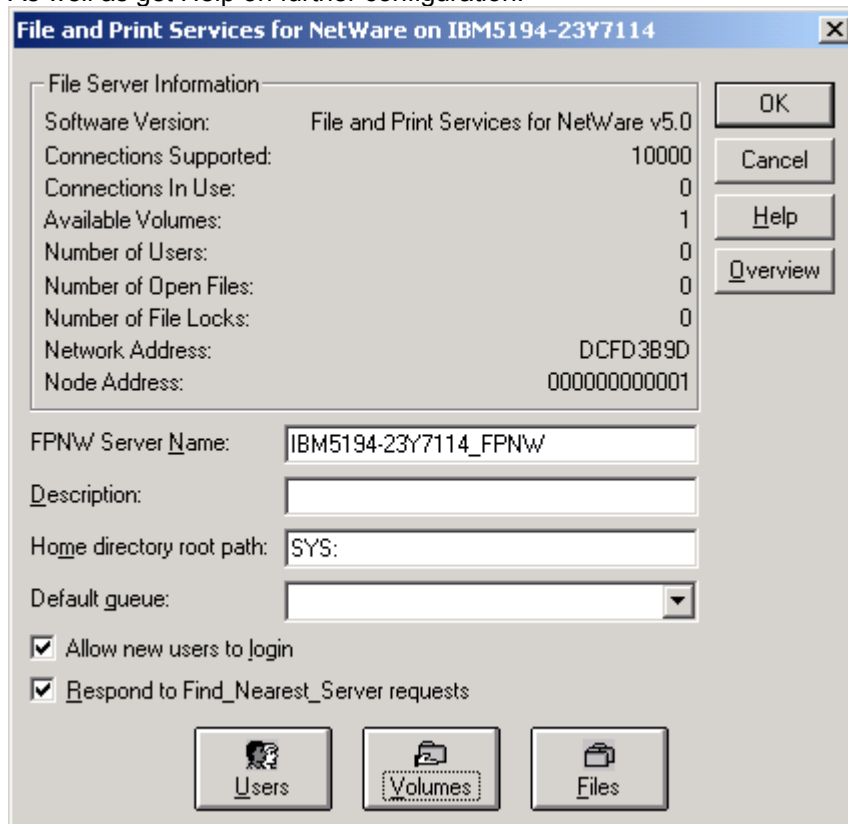
Then you can add the new users to the properties for the folder.



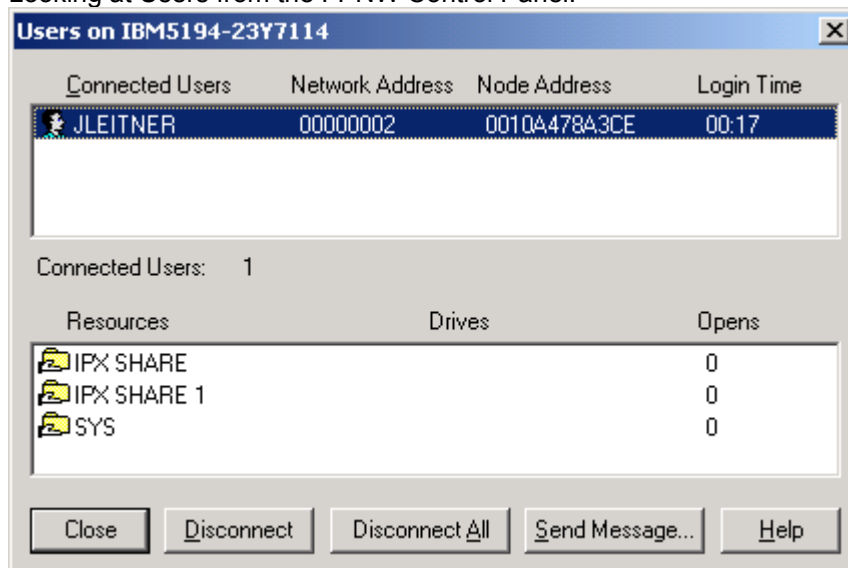
To Monitor the Service go to Start>Control Panel>FPNW



The following window appears. From here you can monitor various activities. As well as get Help on further configuration.



Looking at Users from the FPNW Control Panel:



Looking at Volume Usage from the FPNW Control Panel:

