

# IBM TotalStorage Proven™ program

## i2 Technologies, Inc. Transportation Manager 6.1



### **Testing Template:**

This document will be used to describe, from a technical perspective, the elements that were included as part of the IBM TotalStorage Proven testing. It is intended to give an overall picture of the technical elements of the configuration, with a brief description of the results of the testing including any specific highlights of the interoperability results.

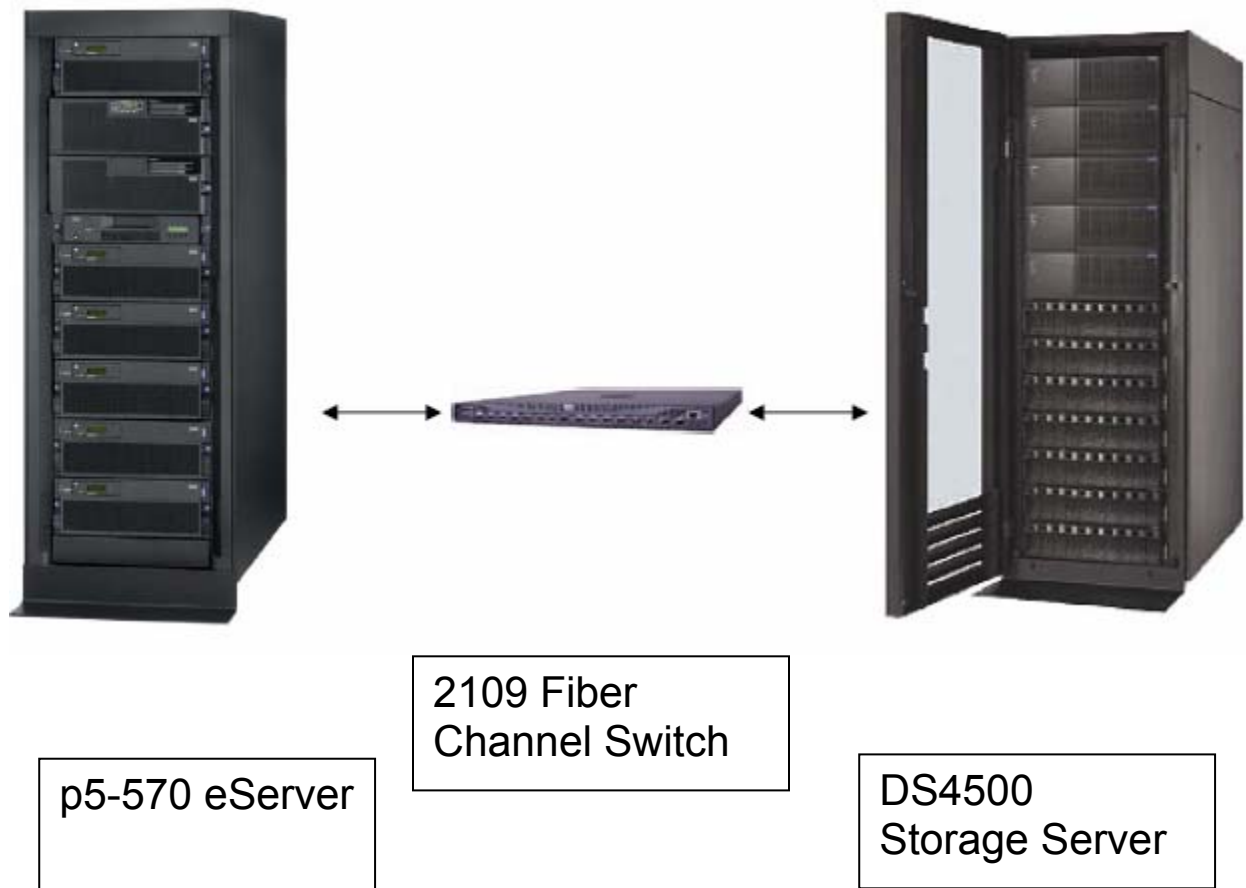
High-level architecture/description, include a list of products that meet the compatibility requirements (“Approved Product(s)”) as well as a list of the IBM storage products with which the Approved Products meet the compatibility requirements (“Qualified IBM Storage Products”):

### Overview:

i2 Transportation Manager version 6.1.5 was tested on IBM eServer pSeries 570 with IBM DB2 UDB Enterprise Server Edition V8.1 with Fix Pack 3. Operating System level was AIX 5.2 ML04. TotalStorage DS4500 Disk Storage System was used for database storage.

## IBM TotalStorage Proven™ program

Testing scenario:



Testing level achieved: Standard

### Testing

The 16 processor test box p5-570 was configured into two logical partitions. The i2™ application and WebSphere application server was installed on one partition and the DB2 database was installed on the second partition. The database partition was connected to the DS4500 Storage system.

Initially, each partition had 8 processors. In this configuration, the performance of the application server was CPU bound while the database server was idle. Based on this observation, the logical partition configuration was changed to 12 processors for the application partition and 4 processors for the database partition. Each partition was configured with a 32 GB real memory.

## IBM TotalStorage Proven™ program

During the test runs the application server used a maximum of approximately 6 GB for concurrent tests and 13 GB for transactional tests of the 32 GB available and the database server used approximately 16 GB and 12 GB respectively of the 32 GB available

### Testing Configuration:

eServer p5-570	
Model	9117-570
Quantity	1
OS	AIX 5.2 ML04
Processor Complex	16-way 1.9 GHz processors
Memory	64 GB
HBA	2 FC 5716 (Emulex)

TotalStorage DS4500	
Model	1742-90U
Quantity	1
Firmware	05.40.11.03
Drives	56 - 36.4 GB—15K RPM
Array Configuration	(6) 267.2 GB Logical disks RAID 5

IBM Fibre Switch	
Model	2109-F16
Quantity	1

### Software Details:

1. Software Vendor: i2 Transportation Manager
2. Release level(s): 6.1.5

### Middleware Used:

1. Vendor Name: IBM WebSphere Application Server
2. Release level(s): 5.1.0.3

### Database Used:

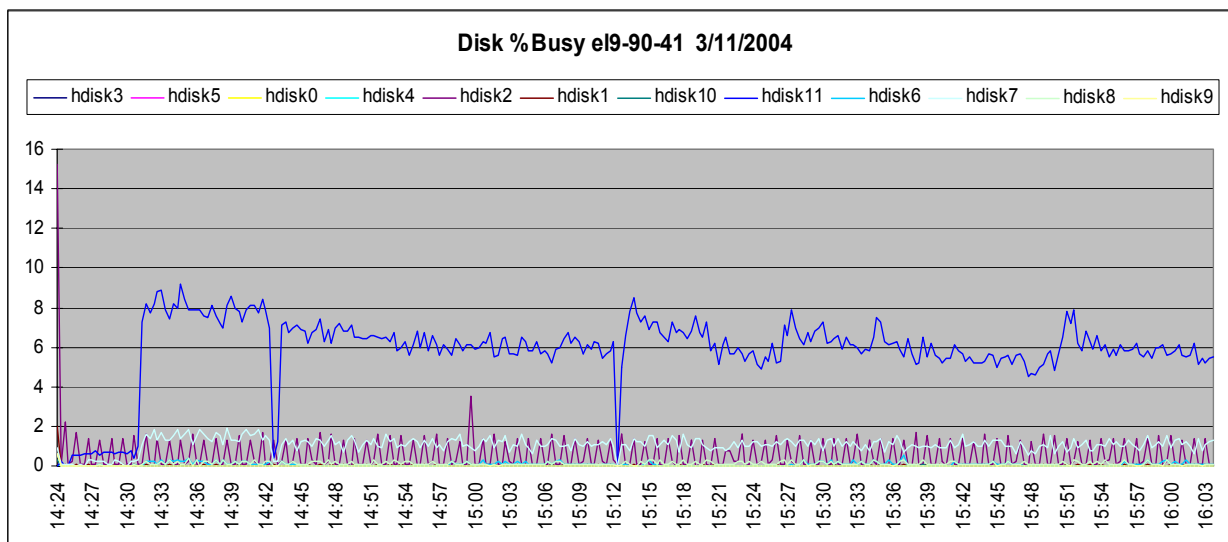
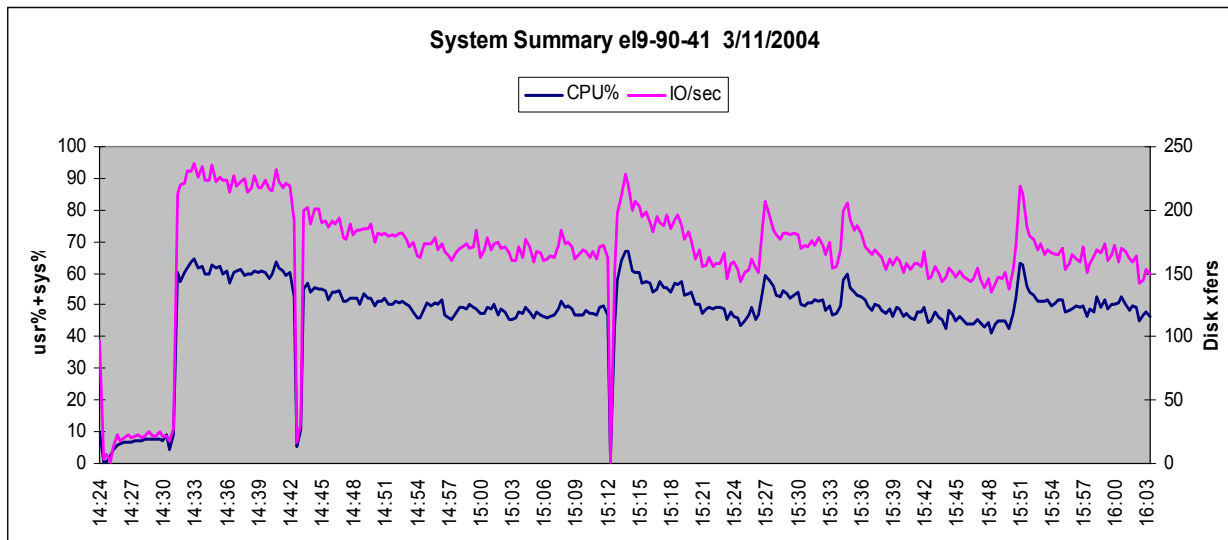
1. Vendor name: IBM DB2 ESE
2. Release level(s) 8.1 FP3

### Testing results obtained:

During Transactional, test run the application server used a maximum of approximately 13 GB of the 32 GB available and the database server used approximately 12 GB of the 32 GB available. Average CPU utilization was 83% (high - 100% for CreateShipment and LoadProcessing, low - 50% for LoadBuild operations) on the application server and 56% (high 80% for LoadBuild, low 35% for SetToPlanned-Rating operations) on the database server.

# IBM TotalStorage Proven™ program

Database Server



Support contacts:

Technical Support Information:

<http://support.i2.com>

e-mail support: [support@i2.com](mailto:support@i2.com)

Phone: 469-357-3456

This product information sheet was prepared by and/or on behalf of i2 Technologies, Inc. IBM is not the author of this product information sheet, and any reproduction, redistribution or republication of such sheets by IBM is not intended, nor should be deemed, to be an endorsement, recommendation or warranty of the non-IBM products described herein. For information concerning IBM's products and services, please visit [www.ibm.com](http://www.ibm.com).