

IBM TotalStorage Proven™ program

MESoft, Inc.
SELECT Server v2.5



Testing Template:

This document will be used to describe, from a technical perspective, the elements that were included as part of the IBM TotalStorage Proven testing. It is intended to give an overall picture of the technical elements of the configuration, with a brief description of the results of the testing including any specific highlights of the interoperability results.

High-level architecture/description, include a list of products that meet the compatibility requirements ("Approved Product(s)") as well as a list of the IBM storage products with which the Approved Products meet the compatibility requirements ("Qualified IBM Storage Products"):

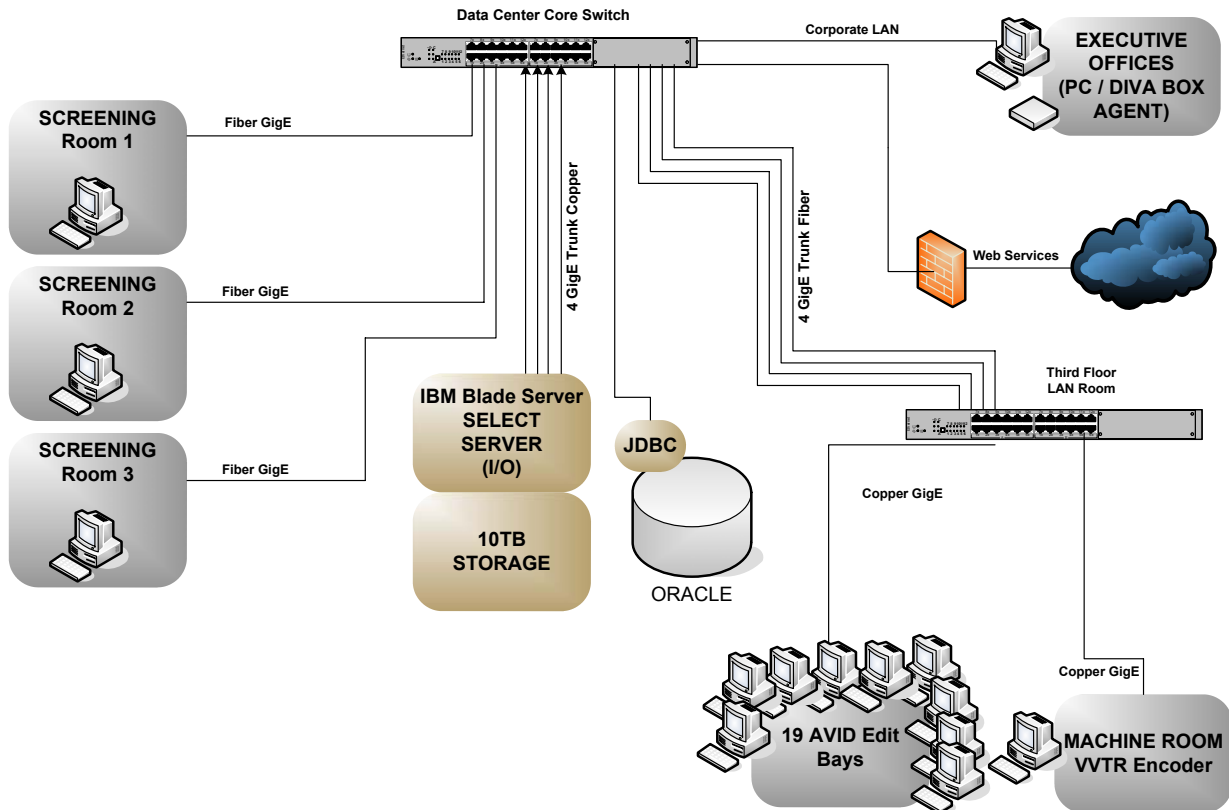
Approved Product: MESoft SELECT Server v2.5

Qualified IBM Storage Products: IBM FastT600, EXP100 (DS4000)

Servers Used in Testing: (4) IBM HS20 Blades (HBAs: QLogic 2312)

IBM TotalStorage Proven™ program

Configuration Tested:



Testing level achieved: STANDARD

Tests Performed:

Basic Functionality Tests

- Power on all devices
- User/group access with heterogeneous environment
- Proper security enforced (access controls function as designed)
- Validate proper sharing and locking schemes

Stress Tests

- Select representative file size increments for the test environment
- Generate large Amounts of applicable data
- Disk I/O Stress Run - Good Path Tests

Installation Tests

- Initial standard installation
- Upgrades

IBM TotalStorage Proven™ program

Test for Software Installed on our Box

- a) Regression test of existing on-the-box software
- b) Multiple installation scenarios
- c) Uninstall Testing
- d) Device Driver installs/validation

Verify primary functions and interoperability

- a) IBM Storage Product
- b) Vendor's Hardware/Software
- c) Storage product features as applicable

Ensure data integrity/data protection

- a) Validate Data Integrity
- b) Backup/Restore features of IBM Storage Product
- c) Backup/Restore of your product

Exception Handling Behavior

- a) Failures of Storage product
- b) Failover testing of Clustered product
- c) Validate that redundant IP paths functions properly by disabling primary path

Reliability/Availability/Serviceability

- a) Diagnostics

Documentation

- b) Document any known limitations/workarounds.
- c) Document supported versions of products

Performance

- a) Baseline Test to ensure adequate performance

Product Tested Details: Windows 2003 Server, Enterprise Edition (SP1)

Hardware Details:

- Server Type and Quantity: (4) IBM HS20 Blade Servers
- Host Bus Adapter: QLogic 2312
 - Firmware Revision: v1.35
 - Driver Revision: v8.2.2.62
- Network Cards: Broadcom NetXtreme
 - Firmware Revision: v7.0.1
 - Driver Revision: v6.7.0.0

IBM TotalStorage Proven™ program

Storage Products Used:

- IBM SANergy Version 3.2.3.0
- (1) IBM FAStT600 P/N: 1722-60U
- (3) IBM EXP100 P/N: 1710-10U
 - Number of Drives 42
 - Drive Type (IBM 250GB) P/N: 90P1349

Switch:

- IBM Fibre SM (Blade Center Module)
 - Vendor: QLogic
 - HW Version: 11
 - Firmware: 1442
- (2) IBM Ethernet SM (Blade Center Module)
 - Vendor: D-Link
 - HW Version: 2
 - Firmware: 70

Testing Results Obtained:

- Tested from June 10th to June 30th
- SANergy requires registry changes to avoid file lock issues
- Application Servers must be load balanced to use SANergy properly.

Sales and Support Information:

<http://www.mesoft.com>

2815 W. Olive Ave
Burbank, California 91505
Main: (818) 260-0858
Fax: (310) 943-1699

For Sales, please contact:

Email : Sales@MESoft.Com
Phone: (818) 260-0858, ext. 116

For Support, please contact:

Email: Support@MESoft.Com
Phone: (818) 260-0858, ext. 456

This product information sheet was prepared by and/or on behalf of MESoft, Inc. IBM is not the author of this product information sheet, and any reproduction, redistribution or republication of such sheets by IBM is not intended, nor should be deemed, to be an endorsement, recommendation or warranty of the non-IBM products described herein. For information concerning IBM's products and services, please visit www.ibm.com.