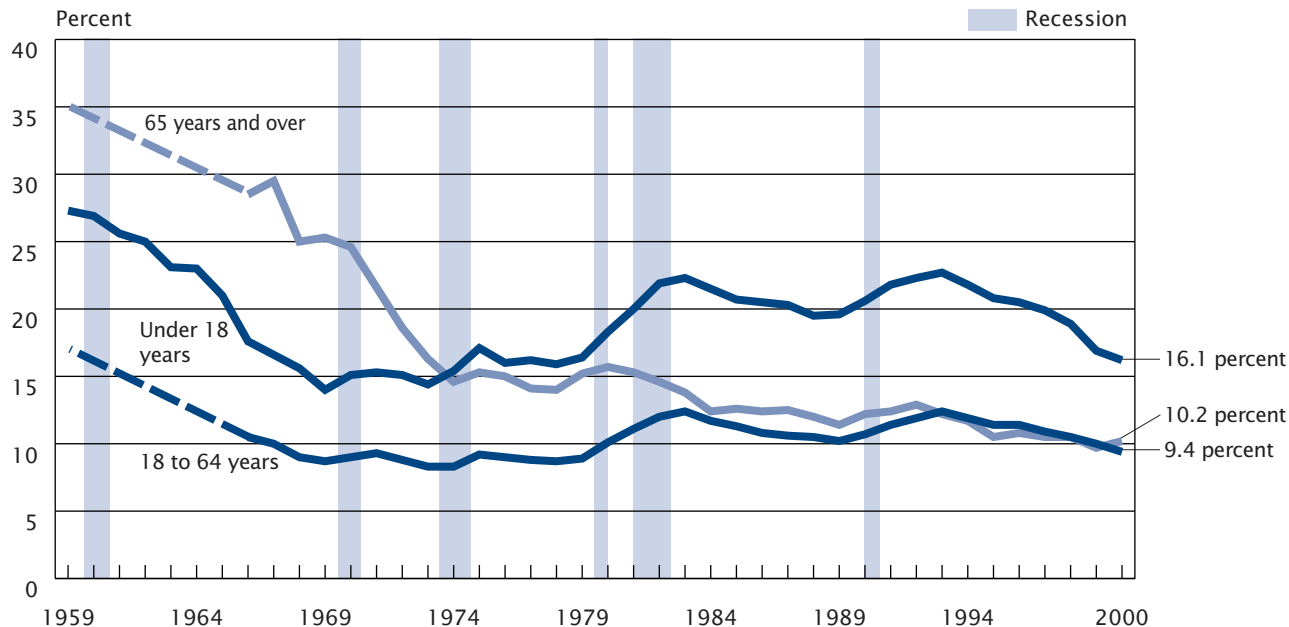


Figure 2.
Poverty Rates by Age: 1959 to 2000

[Based on November 2001 weighting correction.]



Note: The data points represent the midpoints of the respective years. The latest recession began in July 1990 and ended in March 1991.
 Data for people 18 to 64 and 65 and older are not available from 1960 to 1965.
 Source: U.S. Census Bureau, Current Population Survey, March 1960-2001.